

Kelly Rink Improvement Project

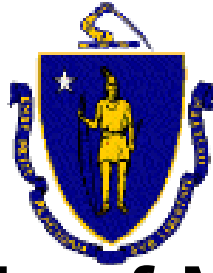
PROJECT UPDATE



1



Public Meeting
May 2025



Commonwealth of Massachusetts

Governor

Maura Healey

Lieutenant Governor

Kim Driscoll

Energy and Environmental Secretary

Rebecca Tepper

Department of Conservation and Recreation Commissioner

Brian Arrigo



DCR MISSION

To protect, promote and enhance our
common wealth of natural, cultural
and recreational resources
for the well-being of all.

Meeting Logistics

- Two ways to ask questions during the meeting
 - Use chat feature
 - Raise your hand using the Zoom function, and you will be given permissions to unmute and speak.
- *Please note that this public meeting will be recorded; the recording will be a public record.*



- **Background & Goals**
- **Existing Conditions**
- **Proposed Improvements**
- **Next Steps**



Improve Rink Operation by adding roof to screen sunlight and provide cover from snow and rain



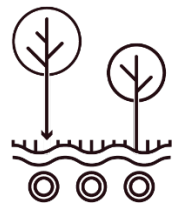
Circulation & Safety is upgraded to address parking limitations



Expand Recreation and Use by planning for “off-season” operations



Improve Trail Use through Area by facilitating better connections to SWCP

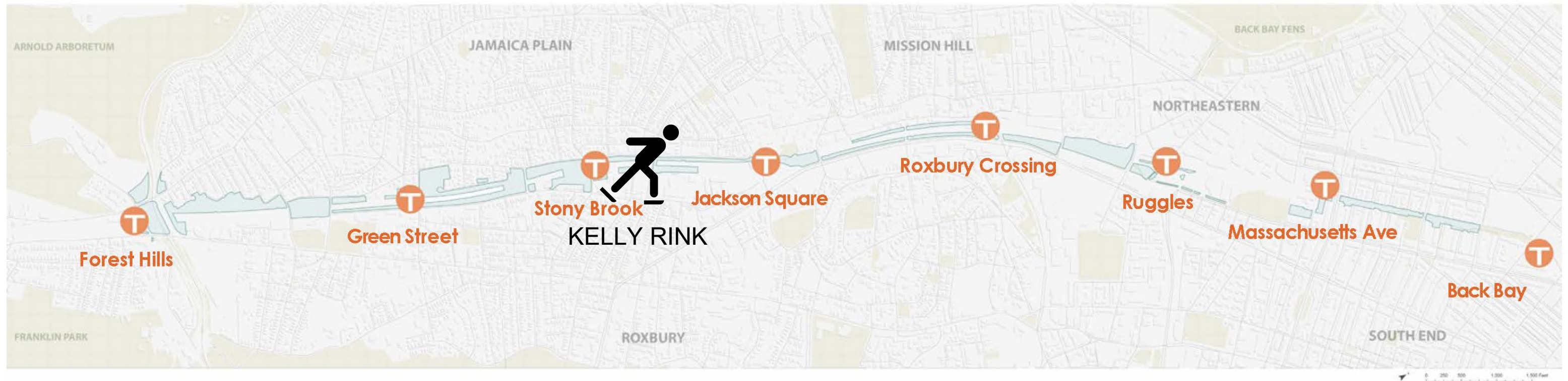


Build Resilience by implementing a Low-impact and Climate Resilient Design



Balance the project goals and needs of community and users.

SOUTHWEST CORRIDOR PARK OVERVIEW



4 miles, 52 acres // 3 landowners // 4 friends' groups + 2 private stewards

12 Community Gardens
8 Playgrounds
8 Hard courts: basketball, tennis/pickleball
3 Splash pads
1 Dog Park
1 Skatepark
2 Rinks, winter skating and street hockey rink
1 Baseball field

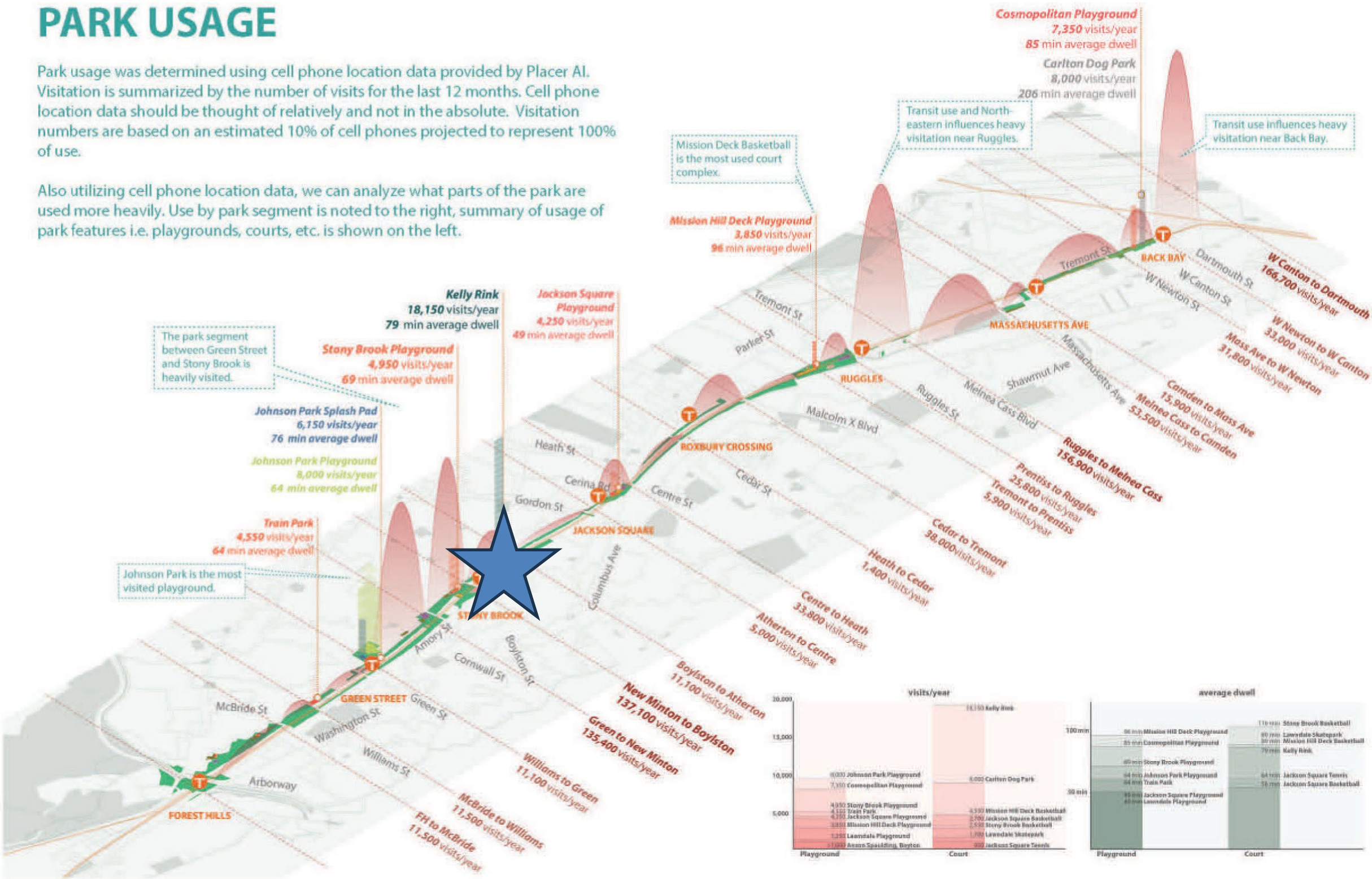
Shared-use path system
Amphitheaters
Gardens and open lawn areas
Public art and interpretative elements
Transit Stations



PARK USAGE

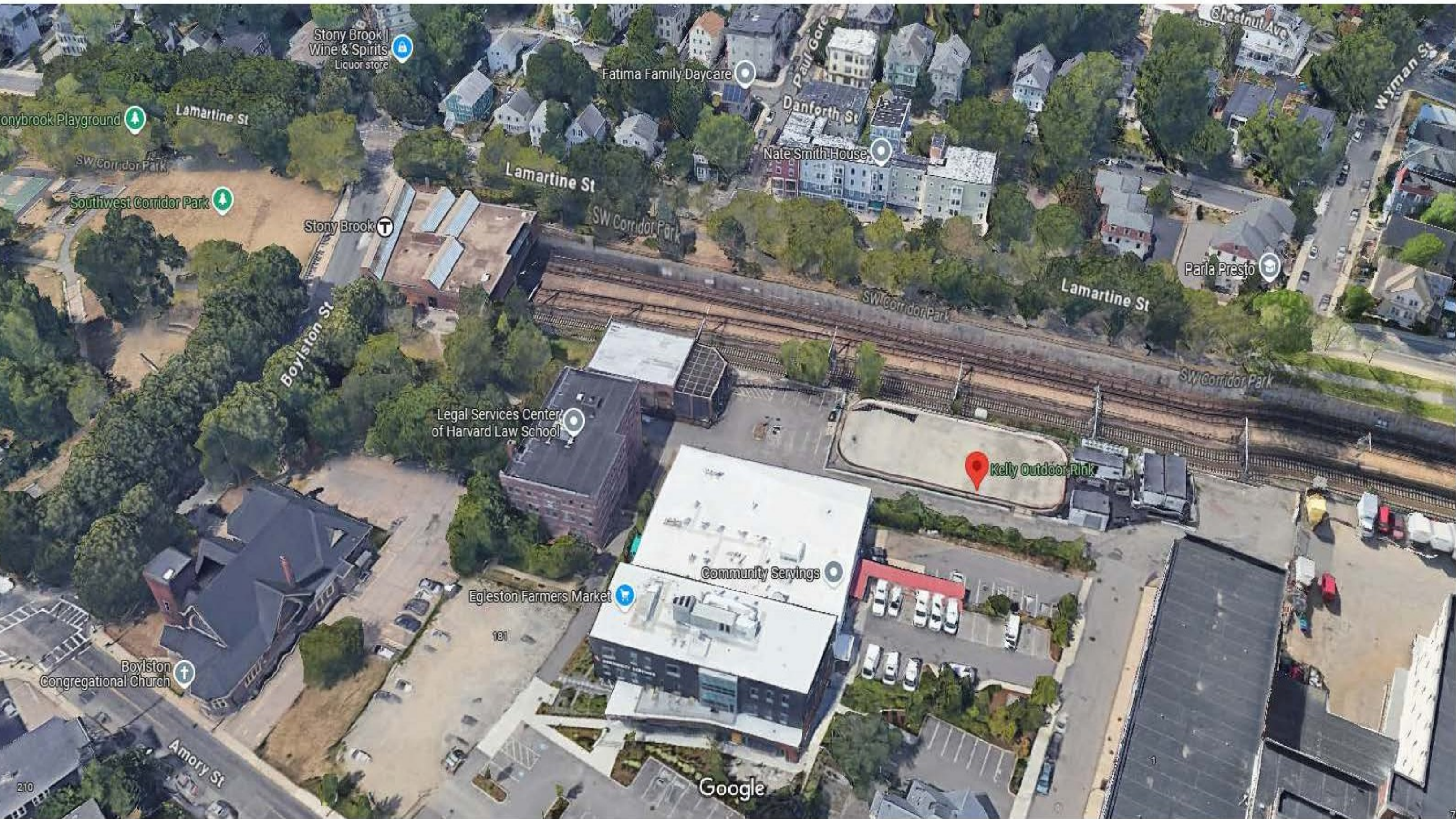
Park usage was determined using cell phone location data provided by Placer AI. Visitation is summarized by the number of visits for the last 12 months. Cell phone location data should be thought of relatively and not in the absolute. Visitation numbers are based on an estimated 10% of cell phones projected to represent 100% of use.

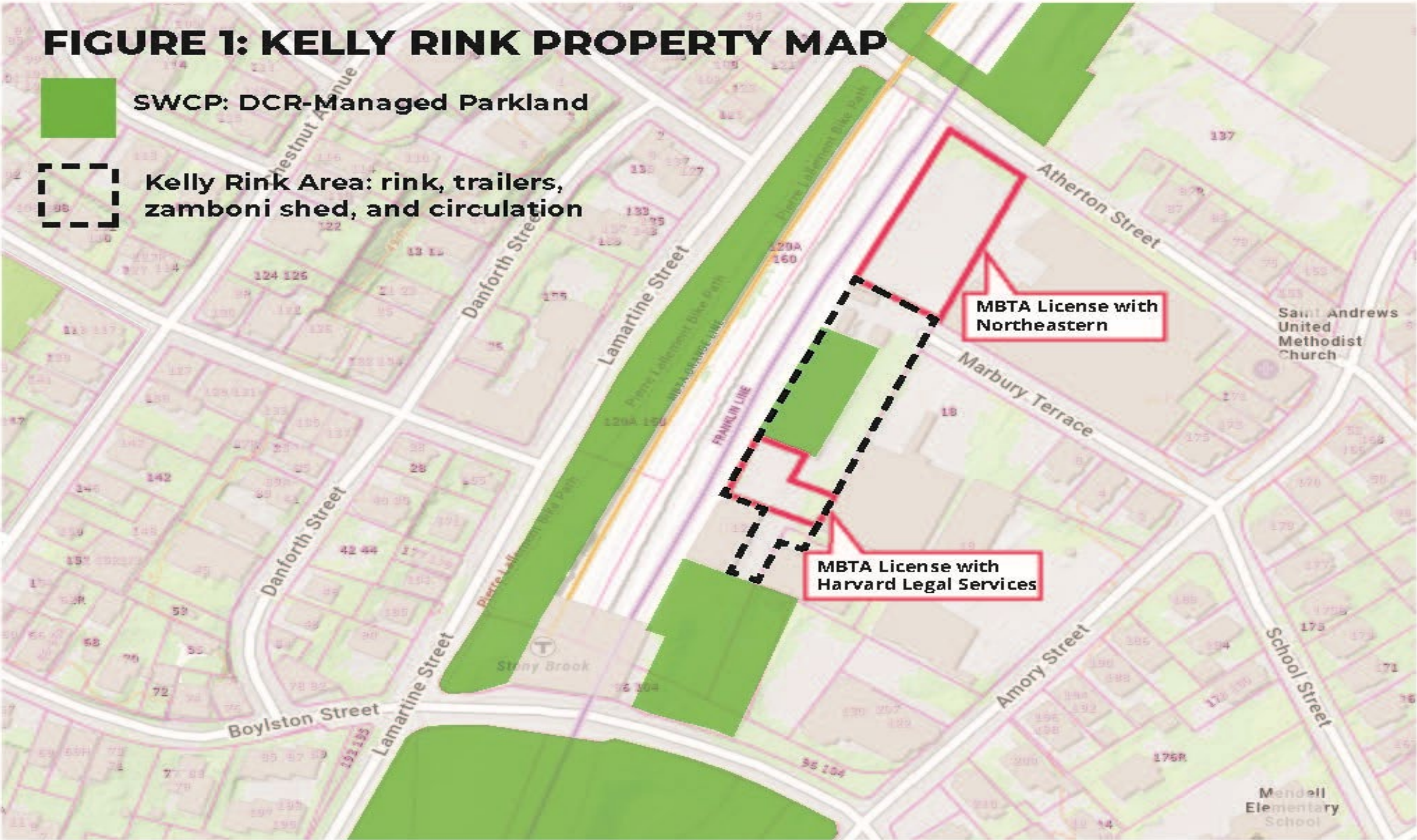
Also utilizing cell phone location data, we can analyze what parts of the park are used more heavily. Use by park segment is noted to the right, summary of usage of park features i.e. playgrounds, courts, etc. is shown on the left.



Approximately 1 million visitors a year - longest dwell times at courts, fields and rinks and highest volumes of activity around MBTA stations

Project Area





Existing Conditions



5



ACTION PLAN RECOMMENDATIONS

Corridor-wide design identity

- Update signage and wayfinding [coordinating with comms/graphic design]
- Drinking fountains and restrooms [ops can continue to do porta-pottys]
- Seating to promote gathering and interaction
- Include big, long-term ideas like new capping, permanent restrooms

Mobility, circulation and access

- Improved intersections and increased path width [intersections/crossings are City of Boston]
- Policy for e-bikes and safe use of path with all modes

Park and recreation facilities

- Maintain open lawn areas for programming and informal use
- Strong support for skatepark expansion with street course
- Strong support for off-leash dog park
- Improve Kelly Rink facilities and circulation, add off-season activities
- Renovate 4 playgrounds
- Community gardens are well-used, managed by SWCP Alliance



ACTION PLAN RECOMMENDATIONS

Natural resources

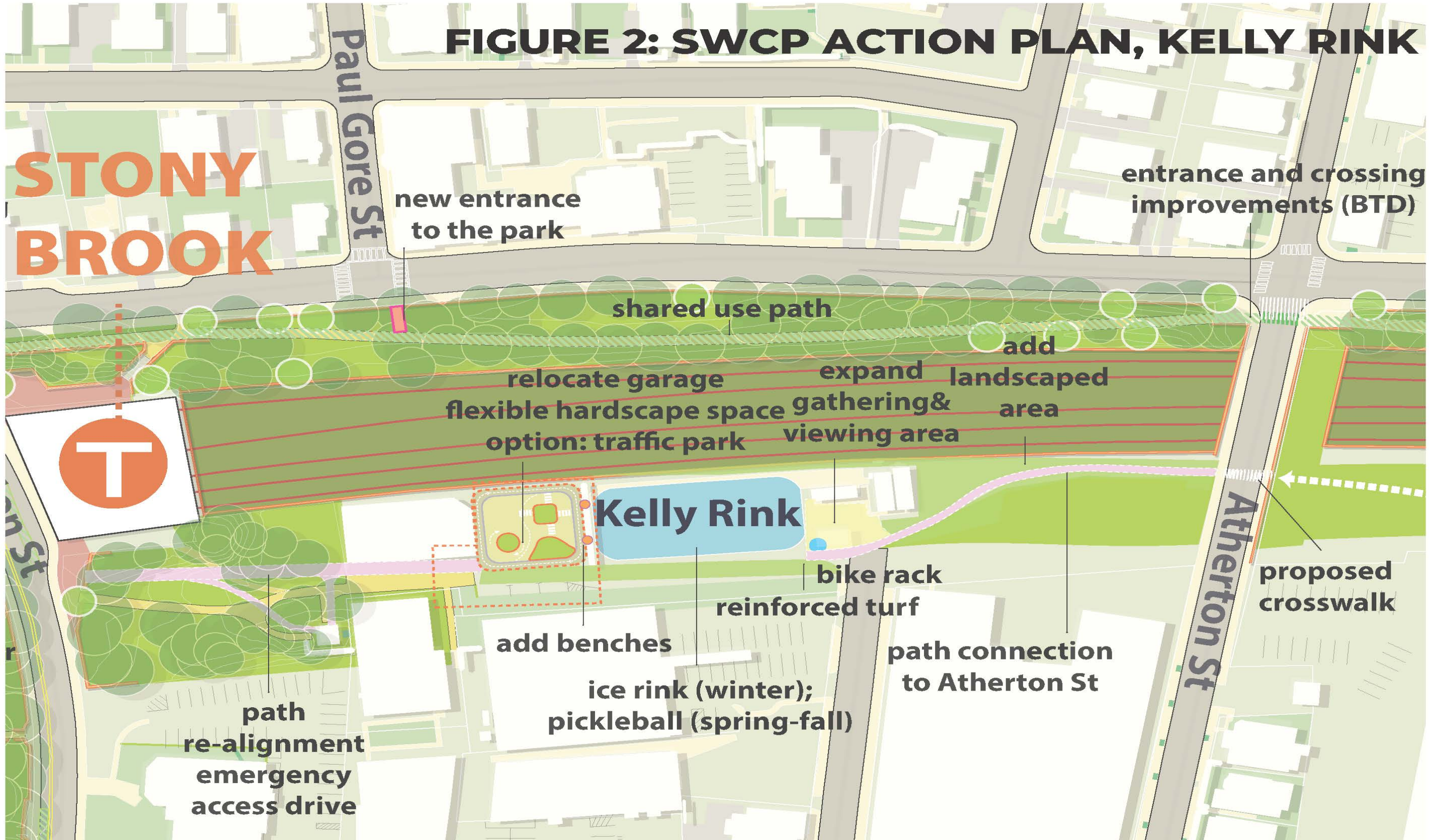
- More trees and plants for climate resiliency and biodiversity

Cultural resources

- Complete an interpretive plan for SWCP to identify the key themes and stories
- Create a program and plan for civic history, interpretation and community-led public art

Implementation strategy

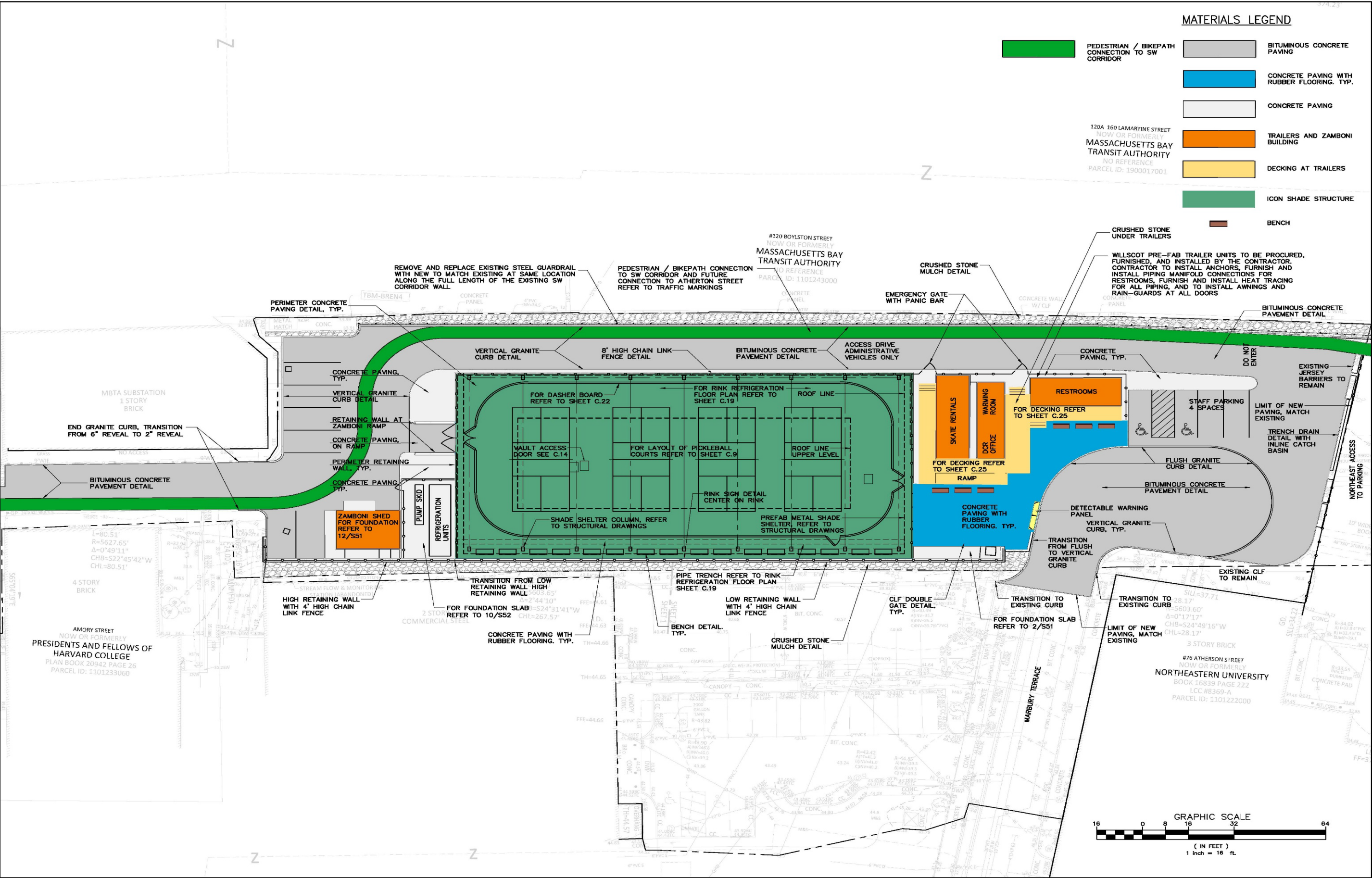
- Current maintenance capacity not adequate for existing and proposed vegetation
- Formalize relationships with friends' groups, especially if dog park is added

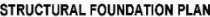




- **Rink Operations**
 - Full Roof Cover of Ice Sheet (w/solar panels)
 - Relocated Zamboni Building & Mechanical Equipment
 - Improved Facility Entrance & Circulation
- **New “Off-Season” Use**
 - Shaded Recreation Area (striped for pickleball)
 - Group-use Pavilion
- **Shared-Use Path Extension**
 - Planned to connect Atherton St. to Stony Brook T Station

Proposed Kelly Rink Improvements



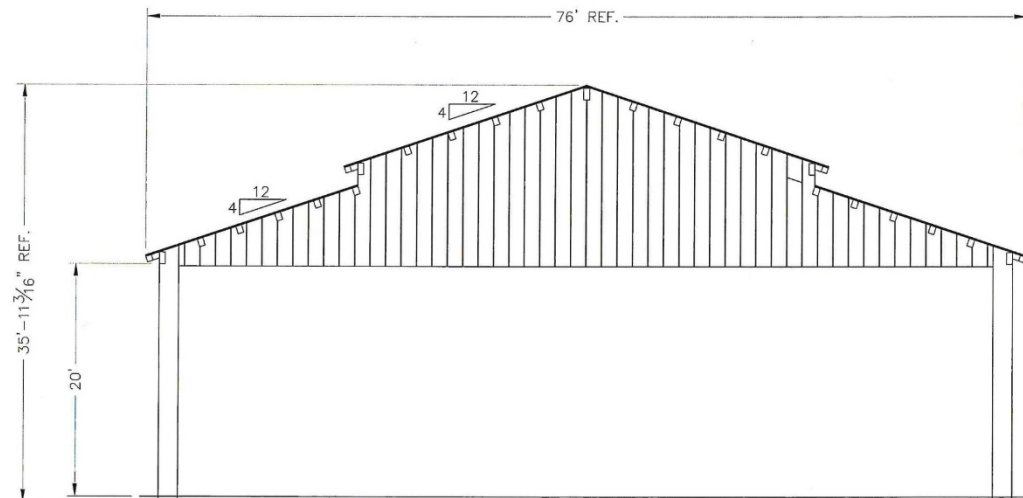
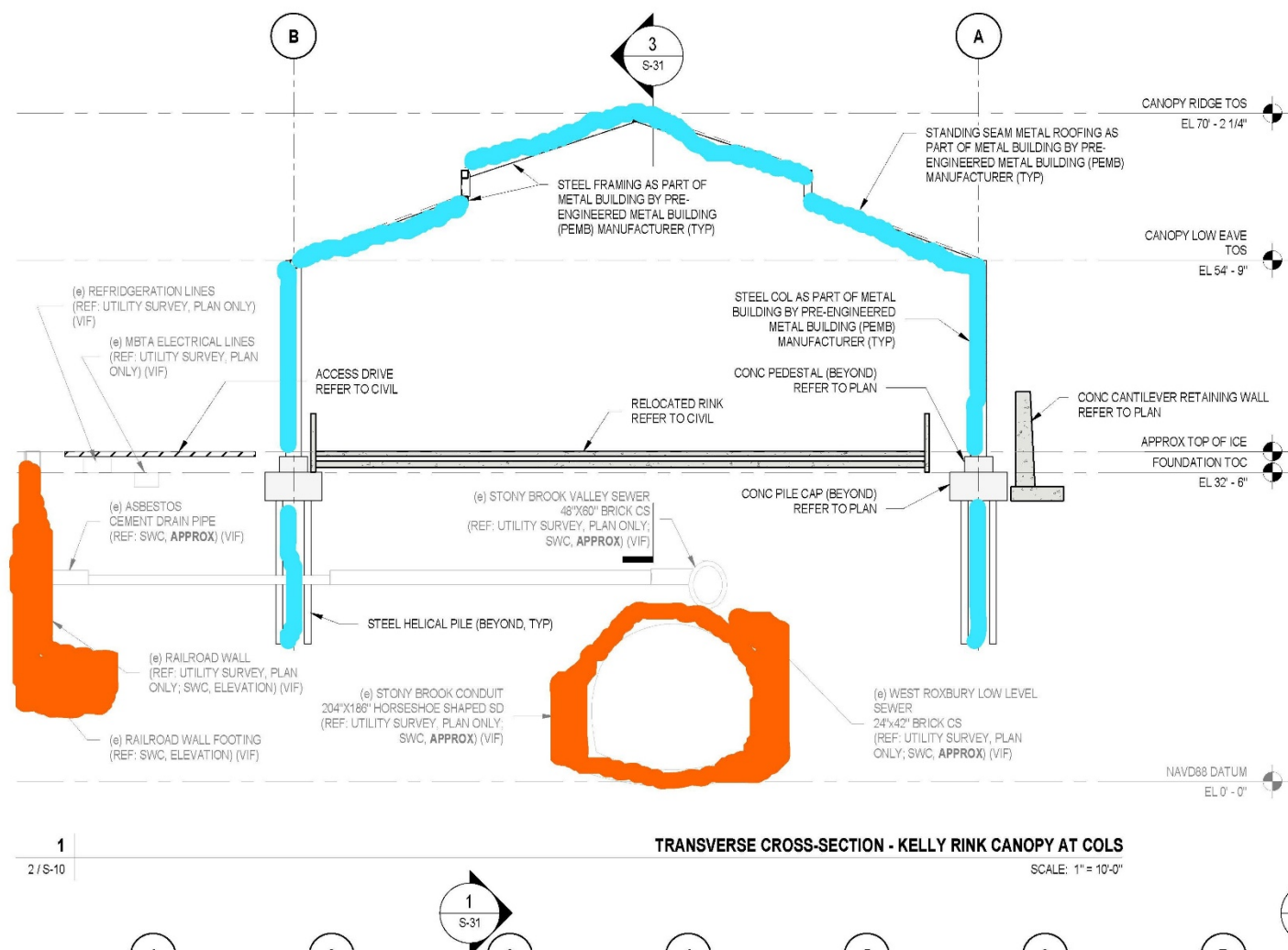
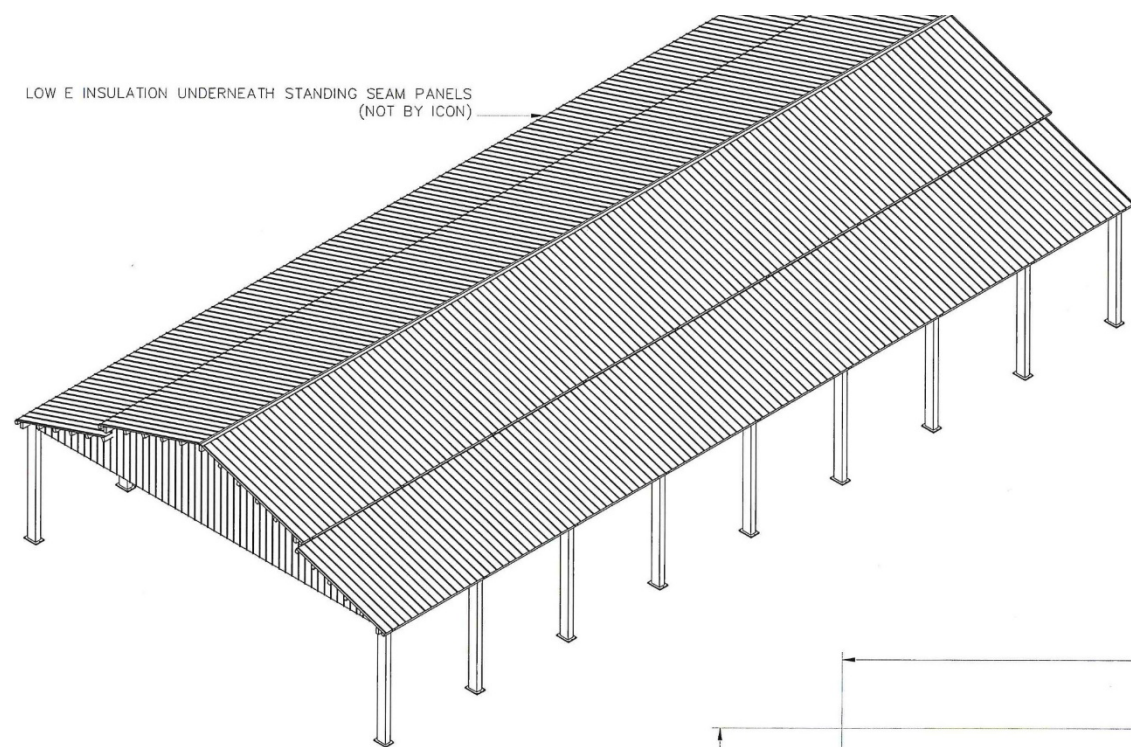


Rink shifts to allow for new cover and trail connection

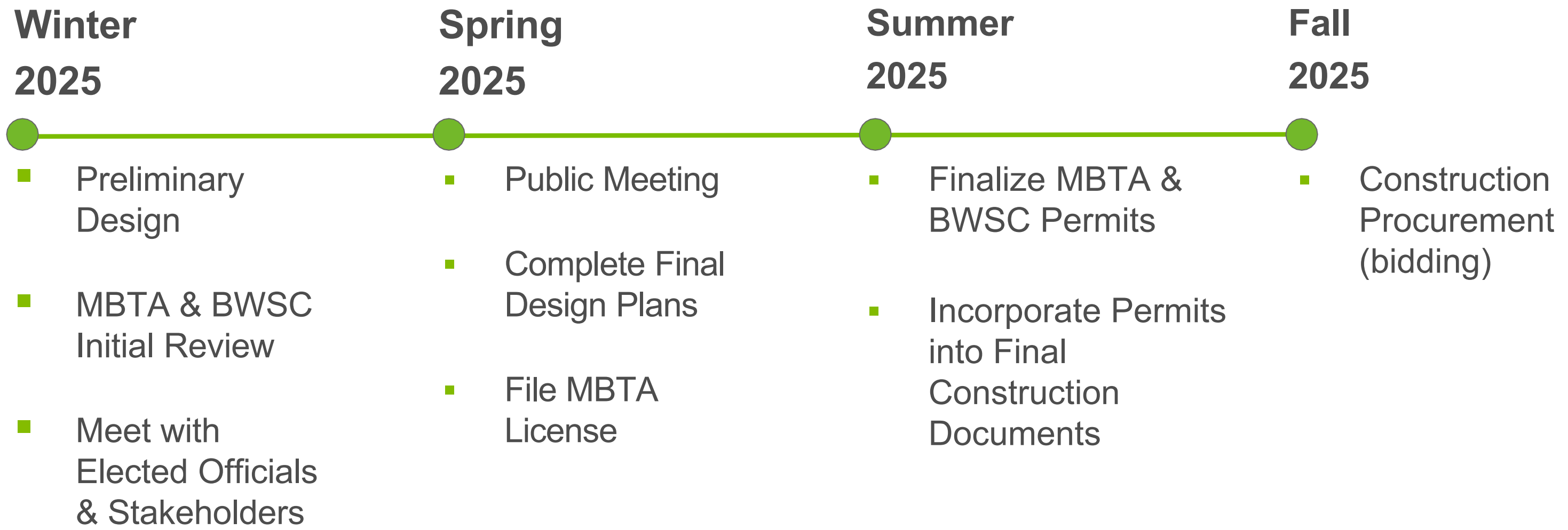
Proposed Kelly Rink Improvements



New Roof Cover for Ice Rink - solar roof PV included



Next Steps & Schedule



Next Steps & Schedule



- April 2025 – Public meeting to public (e.g. Friends of Kelly Rink)
- June-July 2025 – BWSC and MBTA final design review and license agreement
- August 2025 – Finalize Design & Chapter 30 contract bid package
- September – November 2025 – Bidding/Construction Procurement
- December 2025 – Award of construction
- January-March 2026 – Review of construction submittals
- February-May 2026 – Procurement of pre-fab units, roof structure
- April-October 2026 – Construction Period - new rink, roof, and associated site work



Benefits

- Improved Rink Operations
- Creates New Year-round Recreation Area
- Improves Circulation and Trail Connections
- Overall increases in Park & Recreational Space
- Safe, comfortable, and convenient bike and pedestrian facilities and connections

Additional Information

- Recording, chat and tonight's slide deck will be available at:
 - www.mass.gov/dcr/past-public-meetings
- If you have comments on this project:
 - *Submit online:* www.mass.gov/dcr/public-comment
 - *Deadline: Wednesday, June 11, 2025*

Please note: the contents of comments submitted to DCR, including your name, town and zip code, will be posted on DCR's website. Additional contact information provided, notably email address, will only be used for outreach on future updates to the subject project or property.

- If you wish to subscribe to a DCR general information or project-related listserv: contact DCR's Office of Community Relations via email at mass.parks@mass.gov