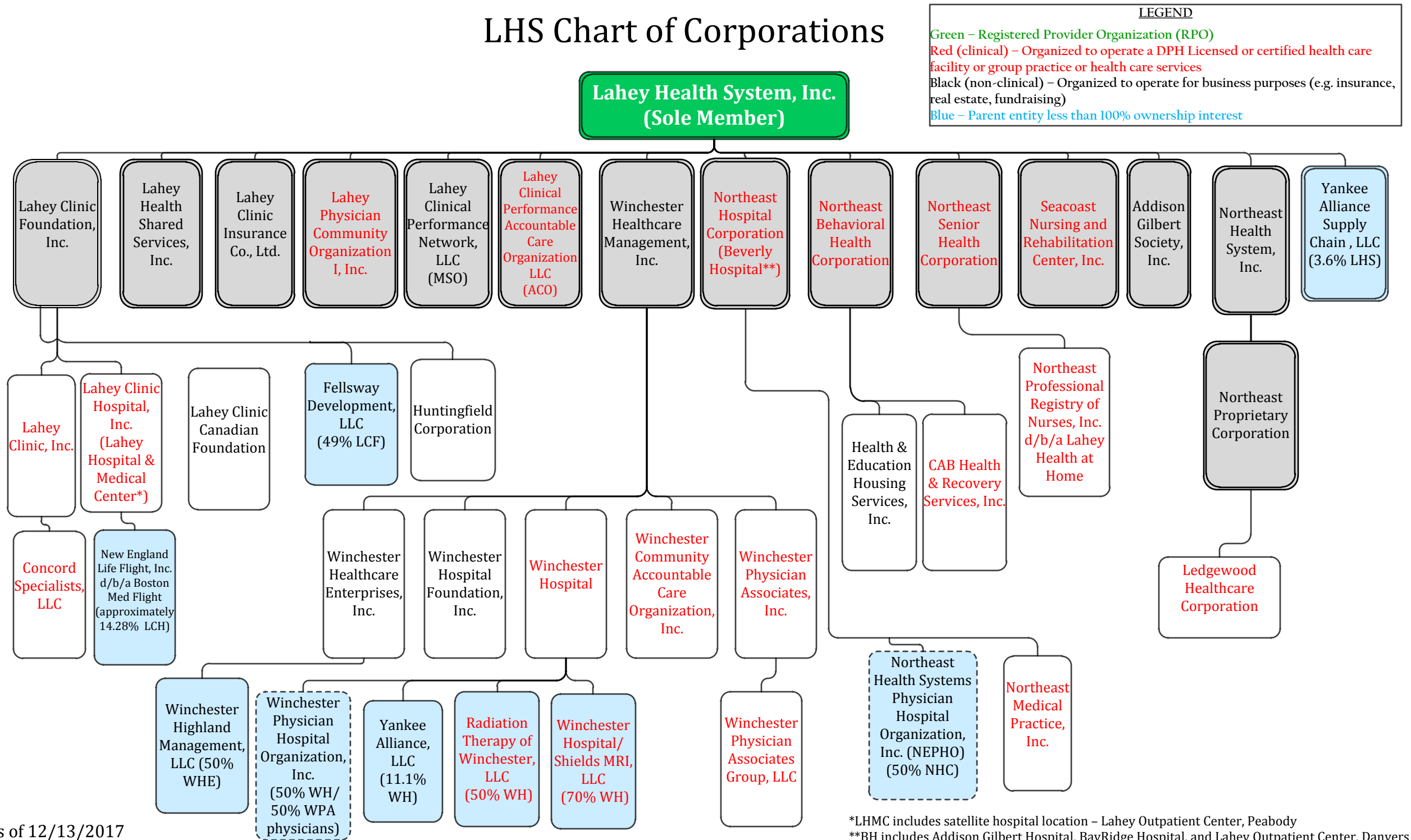


# LHS Chart of Corporations



## LEGEND

Green – Registered Provider Organization (RPO)

Red (clinical) – Organized to operate a DPH Licensed or certified health care facility or group practice or health care services

Black (non-clinical) – Organized to operate for business purposes (e.g. insurance, real estate, fundraising)

Blue – Parent entity less than 100% ownership interest