

Large Vehicle Safety Efforts

(a.k.a. Chapter 90 Section 7 and 540 CMR 4.00)

April 15, 2025



Table of Contents

- 3. Why This Law Matters
- 5. MA Truck Safety Device Law Overview
- 8. Implementation Update
- 10. Large Vehicle Safety – Related Activities

Why this matters

3

Large trucks are involved in a disproportionate share of crashes as compared with their prevalence on the road

but were involved in...

Large trucks are only

4%

of registered vehicles



8%

of pedestrian
fatalities

11%

of bicyclist
fatalities

...in 2021.*

**Data for entire US from US DOT Volpe Center*

Why this matters

Cyclist Killed in Crash in Boston Involving Tractor-Trailer

The crash occurred at the intersection of Massachusetts and Harrison avenues, near the Boston Medical Center

Bicyclist killed by truck is remembered as skilled surgeon, scientist

Bicyclist fatally struck by UPS truck in Newton, authorities say

Share



**‘He was the best’:
Young man killed
by trash truck in
Boston was on way
to meet his uncle
for coffee**

1:58 PM EDT Aug 28, 2023

Scroll Enabled



Bicyclist dies after being hit by truck in Cambridge, police say

The bicyclist, whose name wasn't released, was taken to the hospital, where she died from her injuries, police said

By **Michael Rosenfield** • Published June 21, 2024 • Updated on June 21, 2024 at 11:50 pm

Trash Collector Dies After Falling Underneath Truck in Methuen

Tractor-Trailer Fatally Strikes Bicyclist in Harvard Square

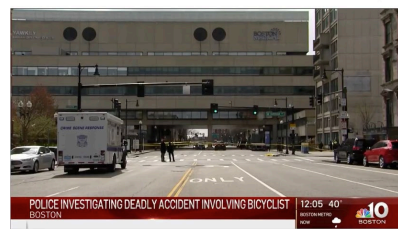


Grandmother killed by dump truck in Worcester identified

Cyclist Killed in Crash in Boston Involving Tractor-Trailer

The crash occurred at the intersection of Massachusetts and Harrison avenues, near the Boston Medical Center

By **Melissa Buja** • Published April 22, 2020 • Updated on April 22, 2020 at 5:25 pm

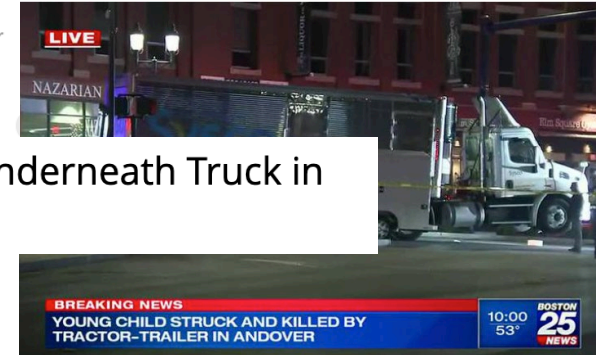


Trending Stories

- NEW ENGLAND PA NFL fans witness Belichick's sans flag throw in Pa
- MASSACHUSETTS Gov. Healey to sign law to ban single-use plastic
- MASSACHUSETTS Traffic right-of-way shuts down during commute after crash
- NEW HAMPSHIRE Driver of truck involved in deadly motorcycle crash

Truck Driver Kills 5-Year-Old Girl In a Downtown Andover Crosswalk

3:44 PM EDT on May 15, 2023



BICYCLING

Truck Driver Kills Cambridge Man Next to Courthouse in Boston

Cyclist Struck And Killed By Dump Truck Outside Museum Of Science

Garbage truck driver charged in deadly Ware accident

Massachusetts Truck Safety Device Law

5

Originally as the Act to Reduce Traffic Fatalities of 2022, now MGL Chapter 90 Section 7 and 540 CMR 4.00

The law **applies** to:

- A motor vehicle, trailer, semi-trailer or semi-trailer unit classified as **class 3 or above** by the Federal Highway Administration, with a gross vehicle weight rating (GVWR) **of 10,001 pounds or more**,
- that is **leased or purchased by the Commonwealth** on or after **January 1, 2023**

— or —

- that is **operated under a contract with the Commonwealth** executed on or after **January 1, 2025**

Additional things to note:

- It applies to Snow/Ice and Towing contracts executed on or after **July 1, 2025**
- Enforcement by state agencies begins **December 31, 2025**

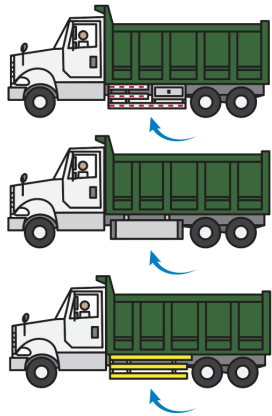
Massachusetts Truck Safety Device Law

Four Devices Required

6

Lateral Protective Devices (LPDs)

1



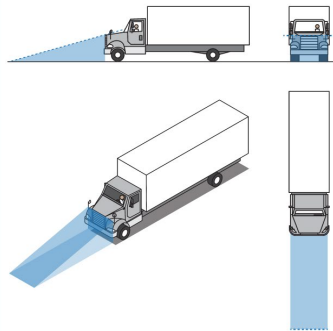
LPD's, also known as **Side Guards**, cover up the space between the front and rear wheels of a vehicle or trailer to **prevent underride crashes**.



massDOT
Massachusetts Department of Transportation

Crossover Mirrors

2



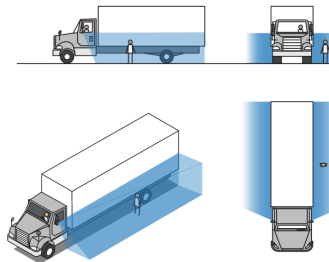
Crossover Mirrors help drivers see in front of the vehicle's hood, making it helpful in **preventing or mitigating frontover crashes**.



massDOT
Massachusetts Department of Transportation

Convex Mirrors

3



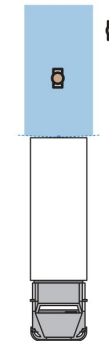
Convex Mirrors help drivers see down the length of the right and left sides of the vehicle



massDOT
Massachusetts Department of Transportation

Backup Cameras

4



Backup cameras help a driver see what is immediately behind them when the vehicle is **traveling in reverse**.

massDOT
Massachusetts Department of Transportation



www.mass.gov/info-details/truck-safety-devices

www.mass.gov/info-details/truck-safety-devices
SaferTrucks@dot.state.ma.us

massDOT
Massachusetts Department of Transportation

Massachusetts Truck Safety Device Law

Which Vehicles does the law NOT apply to?

7

The law does **not apply** to:

- Ambulances, and other emergency medical vehicles,
- Firefighting vehicles,
- Low-speed vehicles as defined in MGL c. 90, § 1,
- Agricultural tractors,
- Vehicles operated under an emergency contract with the Commonwealth
- Vehicles operating under a municipal contract and grant program funded with state aid
- Any other class or type of vehicle as determined by the Registrar

Specifics for Snow & Tow Vehicles:

The Highway Administrator may make a recommendation to the Secretary of the Massachusetts Department of Transportation, to exempt snow removal vehicles and tow operation vehicles under contract with the Commonwealth from the requirements for special safety equipment. The Secretary, in consultation with the Registrar, may issue an exemption for these vehicles on such roadways that are deemed to be low risk for vulnerable user interaction.

Truck Safety Device Implementation Update

Certification Portal

8

- Vehicle owners can **upload basic information and photos** of equipped vehicles
- Vehicle owners can **apply for waivers** or demonstrate “alternative means of compliance”
- State Agencies can **review submissions**, make approvals, or refer waivers for RMV review
- **Certifications are emailed** for vehicle owners to keep in their vehicles, good for lifetime of vehicle or until a change in ownership
- **Webinars** were run for State Agencies and are upcoming for vehicle owners

Home > Government Service > Truck Safety Devices > Truck Safety Device Certification

Search Catalog

Truck Safety Device Certification

Truck Safety Device Certification Vehicles Over 10,000 lbs

This form is used to submit for your truck safety device certification for vehicles over 10,000 lbs. For specific information on your vehicle you can use the RMV website to look up details as follows:

Click the below link to the RMV Website.
Under Vehicle Registration section - click more
On the left of the page click 'Check Status of Registration'
You can then enter your Registration Number & Plate Type
You will see details of your vehicle
[myRMV Online Service Center](#)

What will help you fill out the below form

1. Have your photos ready to upload showing your safety device
2. Have a copy of your registration for information needed

* Indicates required

Requester Details

Requester Name	Email Address
<input type="text" value="Atticus Finch"/>	<input type="text" value="afinch@nomain.com"/>
Phone Number	Business Name
<input type="text" value="5555555555"/>	<input type="text" value="Finch Construction"/>

Save as Draft

Submit

Required information

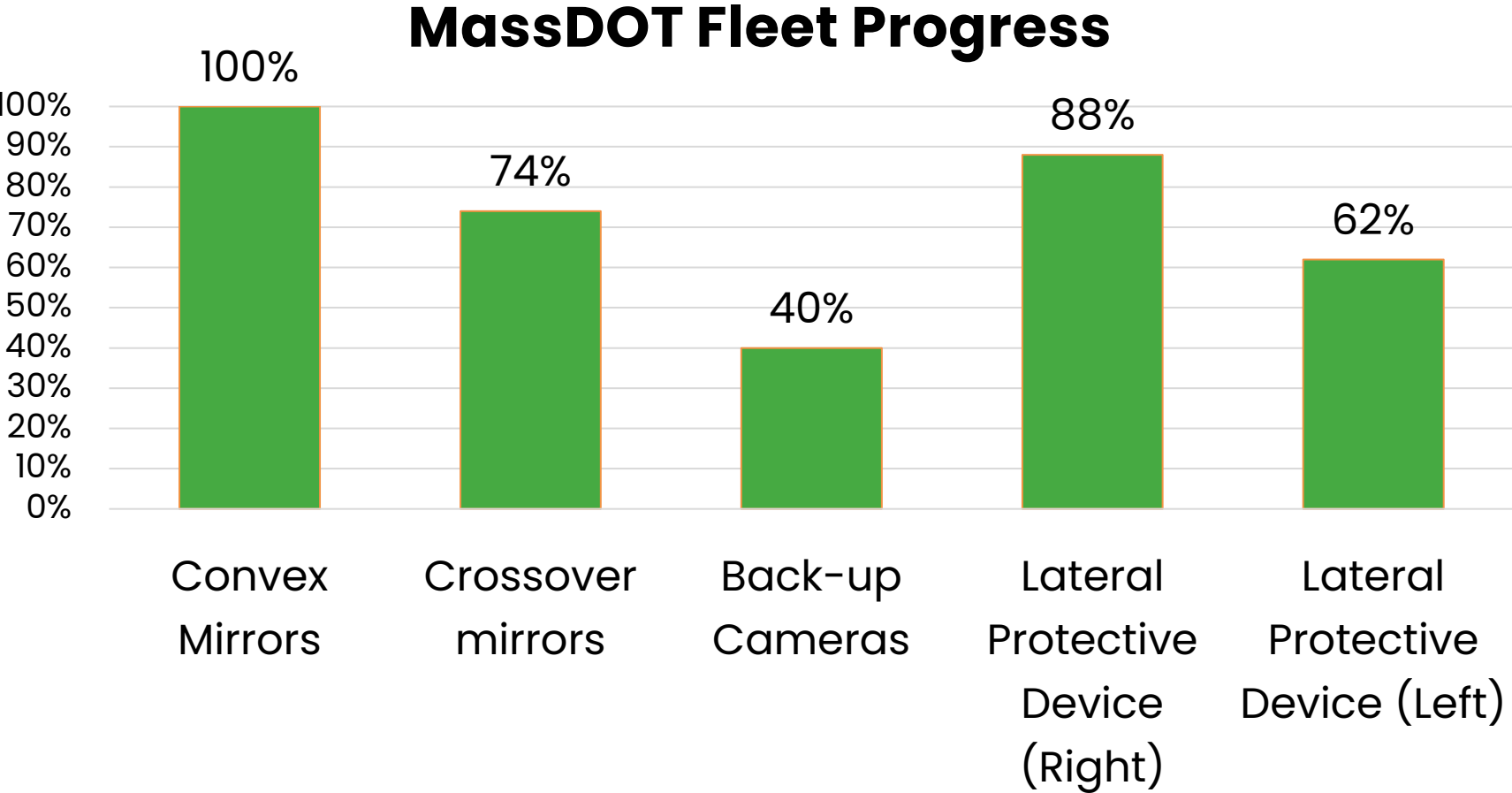
- Registration Type
- Vehicle Plate Number
- Vehicle Photo
- Convex Mirror Photo 1
- Convex Mirror Photo 2
- Crossover Mirrors
- Number of Crossover Mirrors Photos to Upload
- Crossover Mirror Photo 1
- Crossover Mirror Photo 2
- Side Guard - Operator Left
- Number of Side Guard - Operator Left Photos to Upload
- Side Guard - Operator Left Photo 1
- Side Guard - Operator Left Photo 2
- Side Guard - Operator Right
- Number of Side Guard - Operator Right Photos to Upload
- Side Guard - Operator Right Photo 1
- Side Guard - Operator Right Photo 2




Truck Safety Device
Program - myRMV

Truck Safety Device Implementation – MassDOT’s Fleet

MassDOT has 82 trucks purchased after Jan 1, 2023 that require truck safety devices



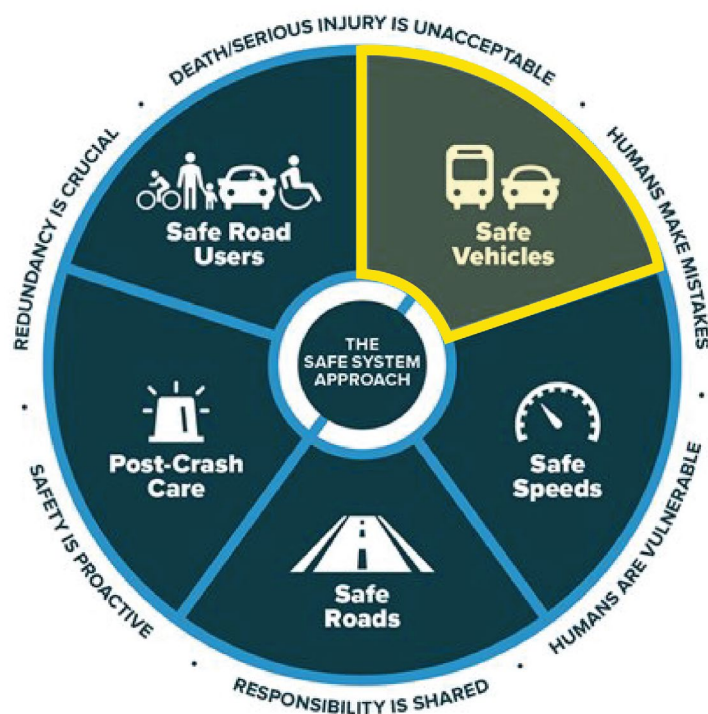
 **Completed –**
*are installed or
have waivers*

*MassDOT has also
installed lateral
protective devices on
75 additional trucks
purchased prior to
1/1/2023*

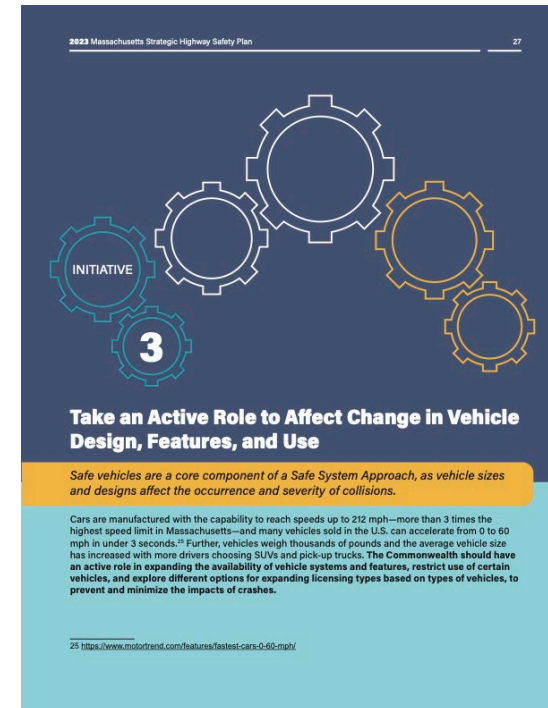
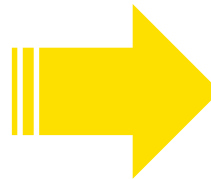
Large Vehicle Safety – Related Activities

Safe System Approach -> Take an Active Role in Vehicle Design

10



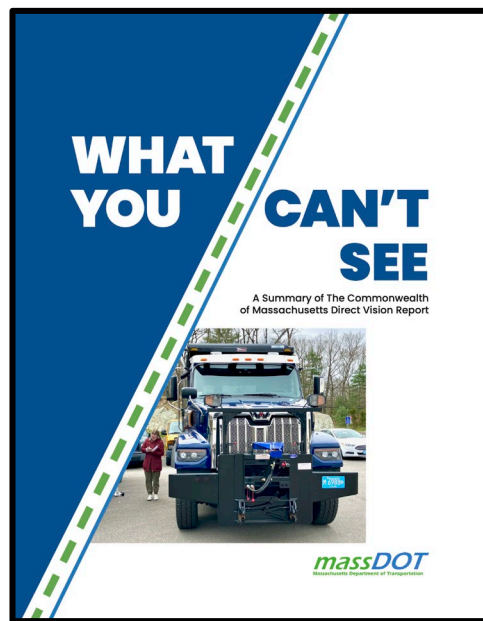
Source: FHWA.



2023 Strategic Highway Safety Plan

Large Vehicle Safety – Related Activities

11



Nation's largest study on **Direct Vision** and creation of a '**5-rating**' **system** for vision done in partnership with 10 municipalities



Spring Try-and-Drive events with municipal partners and truck manufacturers to exhibit three high-vision cab designs for city and town staff



The Truck's Eye View experience at MassDOT touch-a-trucks this May will educate families on blind zones around large vehicles

Thank You

