

MassDOT Highway Construction Contract: 127960 Leominster – Reconstruction and Related Work on Route 12

November 20, 2024



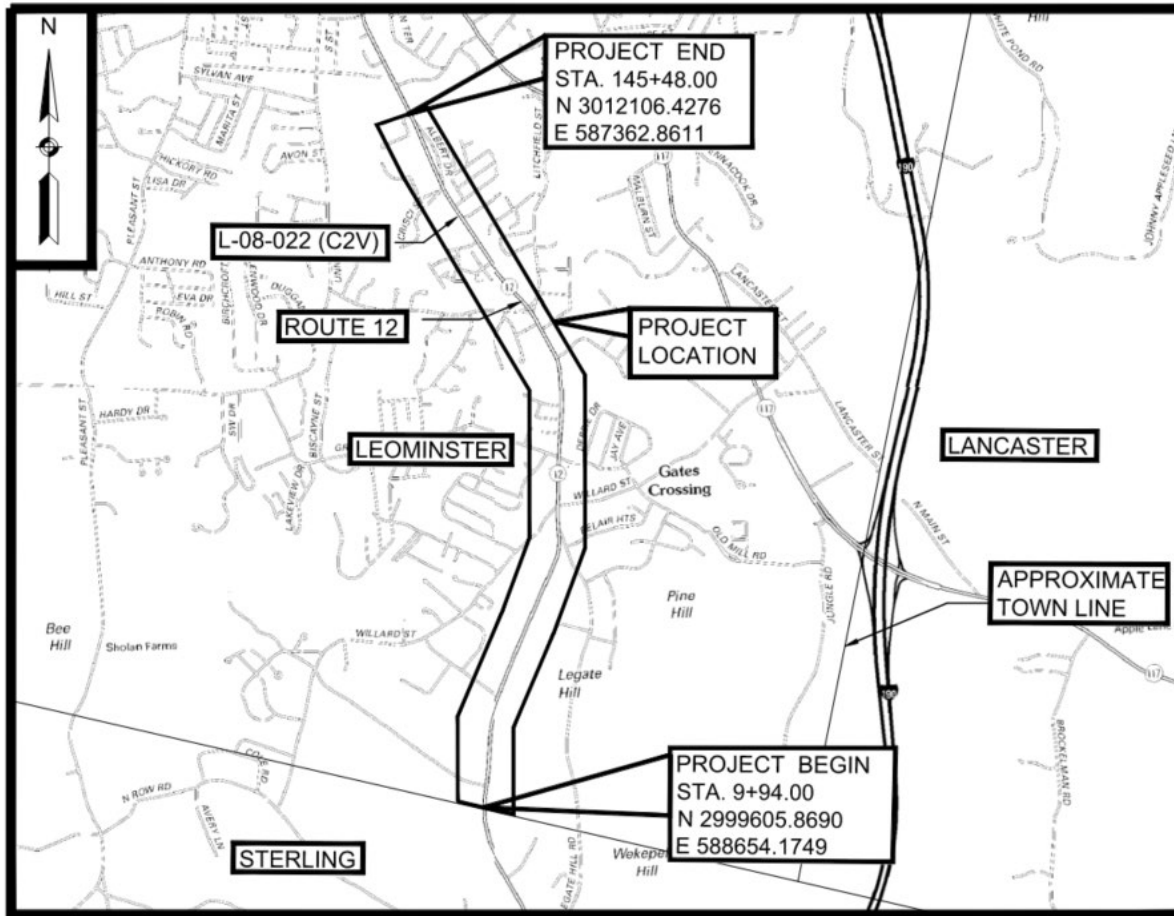
Table of Contents

- 3. Project Location
- 4. Overview
- 7. Procurement & Budget
- 8. Questions from CPC
- 9. Request of the Board
- 11. Appendix

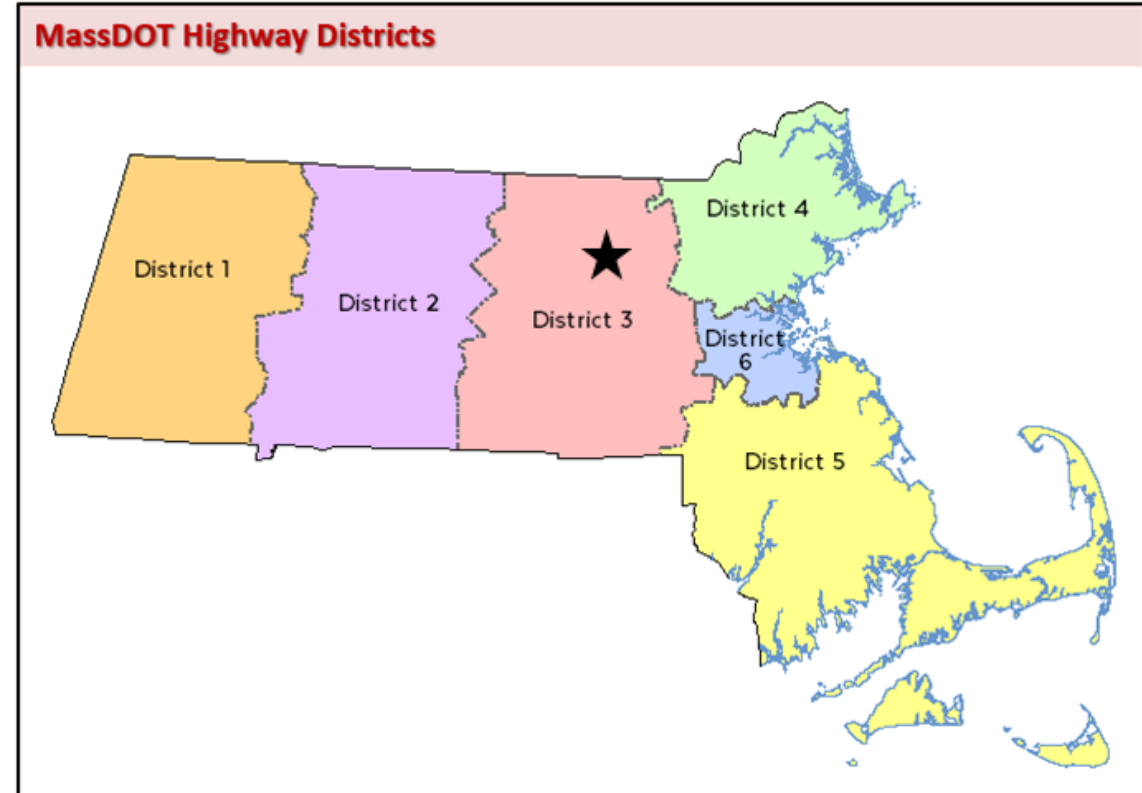
Project Location

Route 12 (Central Street) in Leominster (From Sterling Town Line to Tocci Street)

3



LOCATION PLAN



Overview

Beyond Mobility

4



- This project includes roadway reconstruction and related work along with the replacement of Fall Brook Bridge (L-08-022) to improve bicycle, pedestrian, and vehicular safety.
- Project supports Beyond Mobility Priorities for Safety, Reliability, and Destination Connectivity along this State Highway Corridor

Overview

Scope of Services

5

- Pavement rehabilitation and related work on approximately 2.5 miles of Route 12 (Central Street) from the Sterling Town Line to Tocci Street in the City of Leominster.
- Related work includes installation of sidewalks on both sides of the street, roundabout construction, upgrading non-compliant guardrail and end treatments; retaining wall construction; stormwater improvements; utility relocations, wetland restoration and replication; installing final pavement markings, temporary traffic control; traffic signal upgrades and other incidental items of work as determined by the Engineer.
- Bridge No. L-08-022 over Fall Brook is being replaced in this project.

Overview

Purpose & Need/Construction Management Approach

6

Purpose & Need

- Existing pavement has degraded to poor level and requires milling and structural overlay to improve pavement serviceability, condition and safety. Existing guardrail, utilities, and drainage structures need upgrades.
- Installation of a roundabout at the Litchfield Street Intersection, traffic signals upgrades at Willard Street Intersection and traffic signal upgrades with emergency pre-emption at the Fire Station Driveway

Construction Management Approach

- Traffic management set-ups include lane closures with one lane of alternating traffic, lane shifts, and other traffic control measures along the corridor to facilitate operations
- Site specific set-ups are proposed at the Litchfield Street Intersection for roundabout construction and at the Fall Brook Bridge which includes temporary traffic signal systems for staging vehicle detours.
- The proposed schedule for operations shall be the standard 8-hour day, 5-day week, unless otherwise authorized by the Engineer and with certain exceptions for holidays
- Construction will take approximately four years to complete.

Procurement and Budget

7

- Project Advertised August 31, 2024
- Engineer's Estimate was \$25,635,393.49
- Bid Opening was October 16, 2024
- Four (4) Bids were received:

| | |
|-----------------------------|-----------------|
| J H Lynch & Sons Inc. | \$22,891,725.50 |
| ET&L Corp | \$24,387,595.00 |
| Ludlow Construction Co Inc. | \$24,995,397.75 |
| Albanese D&S, Inc. | \$29,789,898.04 |

| Line Item | Budget |
|-------------------------------|-------------------------|
| Bid Amount | \$22,891,725.50 |
| Contingencies (10%) | \$2,289,172.55 |
| Construction Engineering (5%) | \$ 1,144,586.28 |
| Traffic Police | \$ 825,000.00 |
| Trainees | \$ 4,000.00 |
| Utility Relocation | <u>\$1,732,271.50</u> |
| Total | \$ 28,886,755.83 |

Federal Aid (FA) Funding Breakdown:

- Surface Transportation Block Grant (STBG),
Highway Safety Improvement Program (HSIP)
Transportation Alternative Program (TAP)

Questions from Capital Programs Committee

8

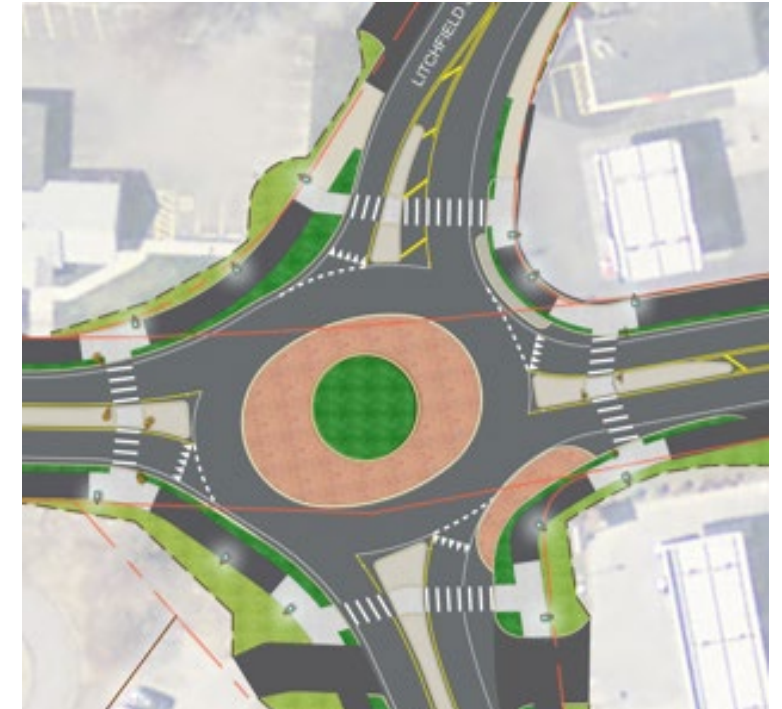
Directors asked questions during the meeting on November 13, as follows:

- **How did the Highway Division determine the intersection configuration between a Roundabout and signalized intersection for Litchfield Street?**

Highway Division performed Intersection Control Evaluation (ICE) to assess safe configurations for Litchfield Street Intersection for all modes and users.

- **Did the Roundabout footprint require right of way takings?**

Litchfield Street is City Right of Way recorded in 1927 and altered in 1982. Due to this state highway corridor project, Highway Division acquired state highway rights and rights on behalf of the City for the roundabout and the shared use path construction.



Request of the MassDOT Board

9

Staff request that the MassDOT Board of Directors authorize the Secretary of the Massachusetts Department of Transportation, or her designee, to award and execute MassDOT Construction Contract 127960: Leominster-Reconstruction and Related Work on Route 12 from the Sterling Town Line to Tocci Street, with J H Lynch & Sons, Inc, in the amount of \$22,891,725.50.

Thank You



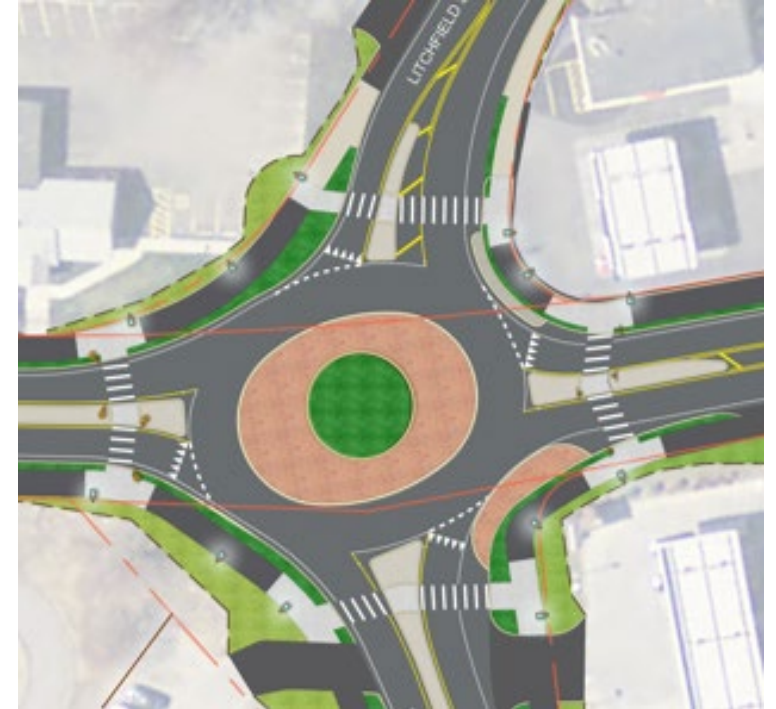
Appendix

Questions from Capital Programs Committee

12

Highway Division performed Intersection Control Evaluation (ICE) to assess safe configurations for Litchfield Street Intersection for all modes and users.

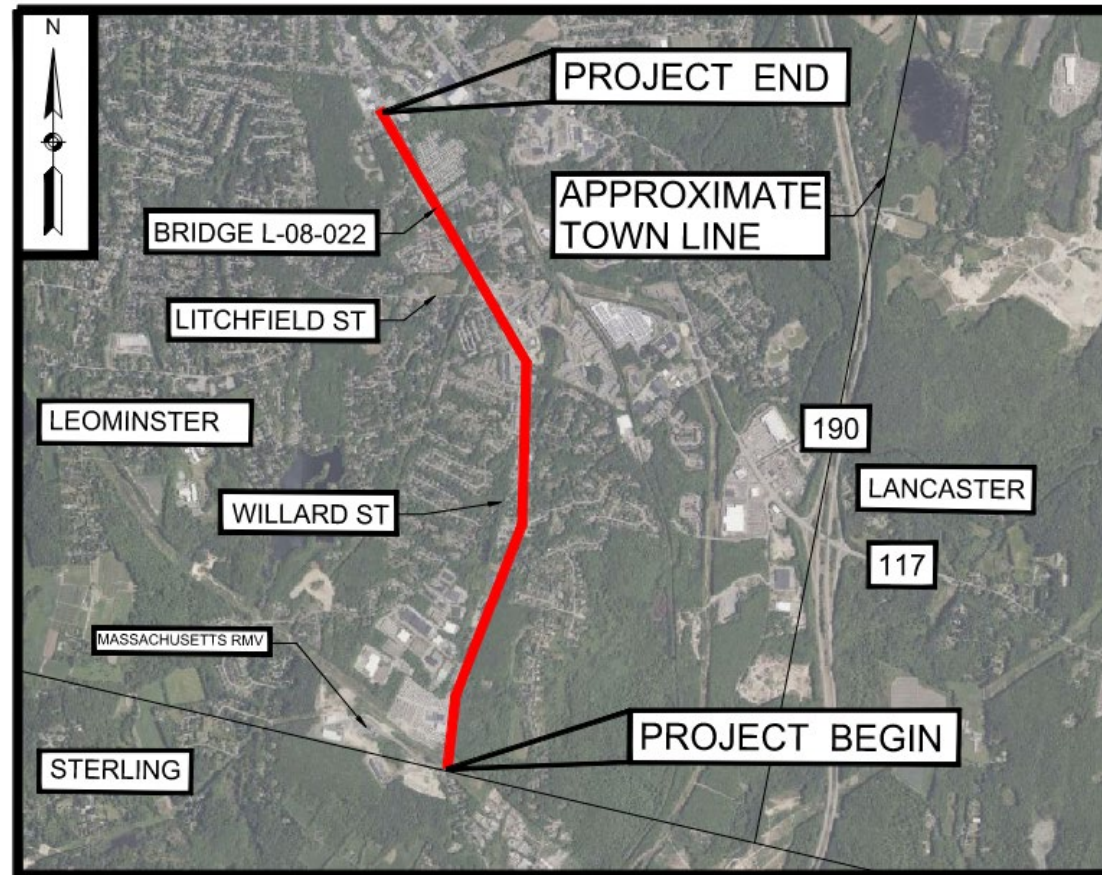
- Existing conditions/deficiencies
 - Poor pavement conditions, non-compliant signage
 - Non-ADA Compliant Ramps and Sidewalks, Faded Crosswalks,
 - Non-Compliant Signal Equipment
- Proposed Roundabout
 - Single Lane Roundabout – 18'-0" Minimum within Roundabout
 - Truck Apron – 13'-6" Minimum within roundabout
 - Landscaped Center Island
 - 8'-0" to 10'-0" Shared Use Path around Roundabout
 - Pushbutton activated Flashing Beacons on Central Street legs for crosswalks
 - Cement Concrete Splitter Islands on approaches
 - Full Depth Pavement Reconstruction
 - Staged Construction with Truck Detours



Project Location

Route 12 (Central Street) in Leominster (From Sterling Town Line to Tocci Street)

13



LOCATION PLAN

