

Welcome!



Reconstruction of Foster St Littleton, Massachusetts Project File No. 609054

25% Design Public Hearing/
Informational Meeting Webinar
May 28, 2020

Introduction

- MassDOT Project Manager
 - Aleksey Belov
- Town of Littleton Design Consultant / Process Facilitators
 - Fuss & O'Neill, Inc. , Nicholas Lapointe, P.E.,

Project Team



Town of Littleton, MA
Project Proponent

Fuss & O'Neill, Inc.
Engineering Design Consultant

MassDOT's Highway Division
Responsible for administering the
Design Process and providing
Resident Engineer Services

Federal Highway Administration
Responsible for Oversight

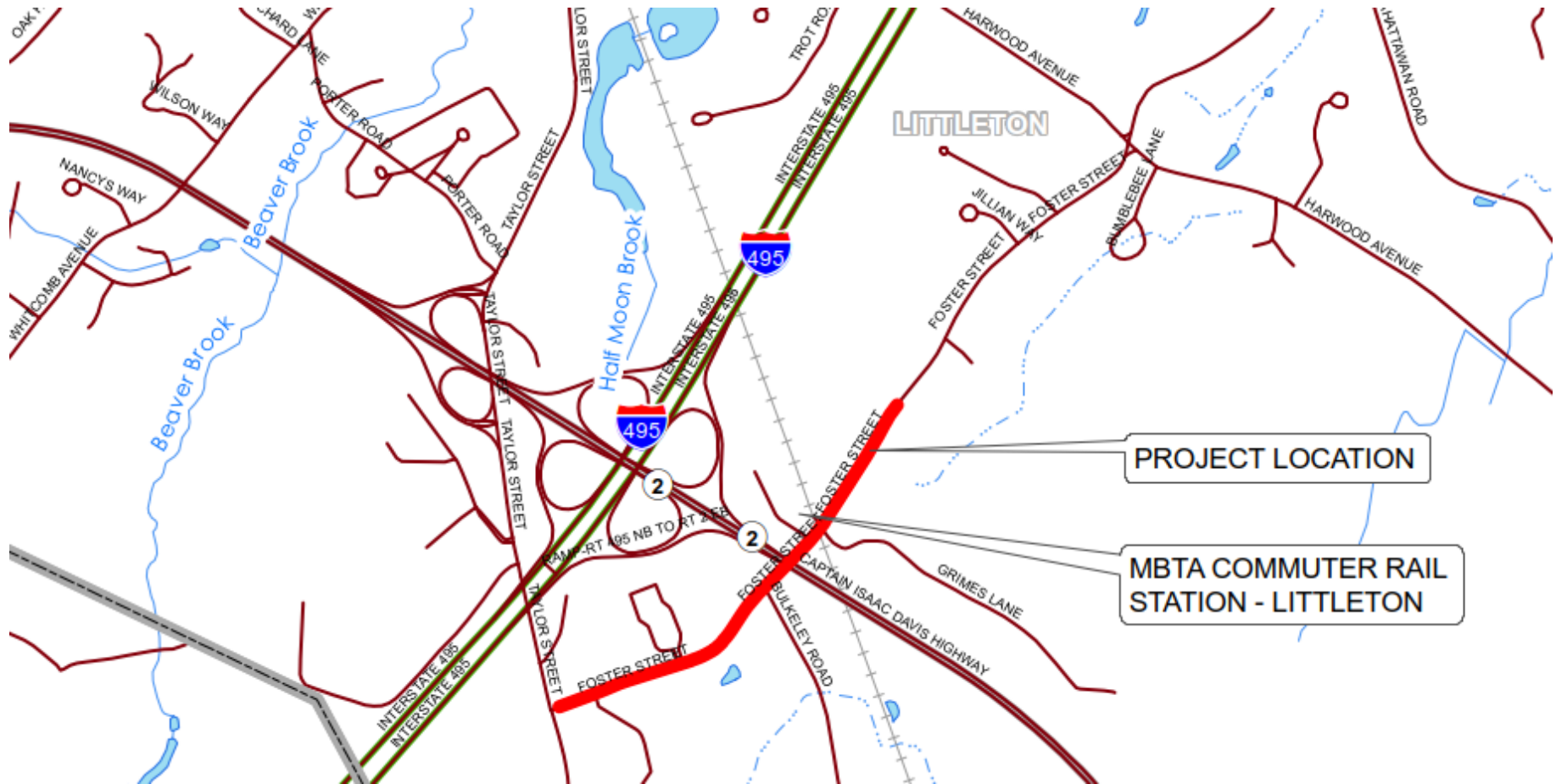
Agenda

- Project History
- Project Limits
- Why do we need a project? / Existing Conditions
- How are we going to fix it? / Alternatives Considered
- Proposed Conditions
- How will traffic be impacted?
- Schedule

Project History and Previous Public Outreach

- MassDOT Project Initiation – Spring 2018
PNF/PIF forms submitted by Town to apply for funding through MassDOT
- Commence Preliminary Design – Fall 2018
- Littleton Board of Selectmen Meeting on January 14, 2019
- Pre-25% Submission to MassDOT – Feb. 2019
- The Littleton Station Area Planning Study: Listening and Visioning Sessions on April 5&6, 2019
- 25% Submission to MassDOT – June 2019
Utility Meetings, Comment Resolutions – Fall 2019
- MassDOT Design Public Hearing/Information Webinar on May 28, 2020

Project Limits



- From the intersection of Taylor Street and Foster Street to Balsam Lane, approximately 3,700 l.f.

**Why do we need
this project?**



Existing Issues / Conditions



- Lack of Bike / Ped. accommodations
- Drainage/Stormwater management
- Pavement condition
- Signs & Markings
- Utility Locations
- Support Property Development
- Access to MBTA

Existing Issues / Conditions



- Route 2 Overpass – Looking northeast on Foster Street
poor lighting / sight distance, lack of pedestrian & bike facilities

Existing Conditions



- Grimes Lane Approach to Foster Street– Looking northwest at Foster Street and The MBTA Fitchburg Commuter Rail Line
 - dangerous intersection alignment. Concerns with encroachment / improper use by overflow parking lot for MBTA station

Existing Issues / Conditions



- MBTA Station (Littleton/495) frontage on Foster Street– Looking southeast on Foster Street
 - parking challenges, no bike / ped. facilities

“How do we fix it?” (Project Goals)

Update Pedestrian & Bicycle Accommodations and access to MBTA station

Improve pavement condition and extend service life

Improve horizontal roadway geometry for vehicular safety

Update wayfinding and directional signage to MBTA and other points of interest

Provide sustainable methods of treating storm water when possible – improve roadway stormwater management

Address lighting deficiencies at Route 2 overpass and at MBTA roadway frontage

Update pavement markings and traffic signage

Replace existing aging water main from Taylor to Balsam Lane.

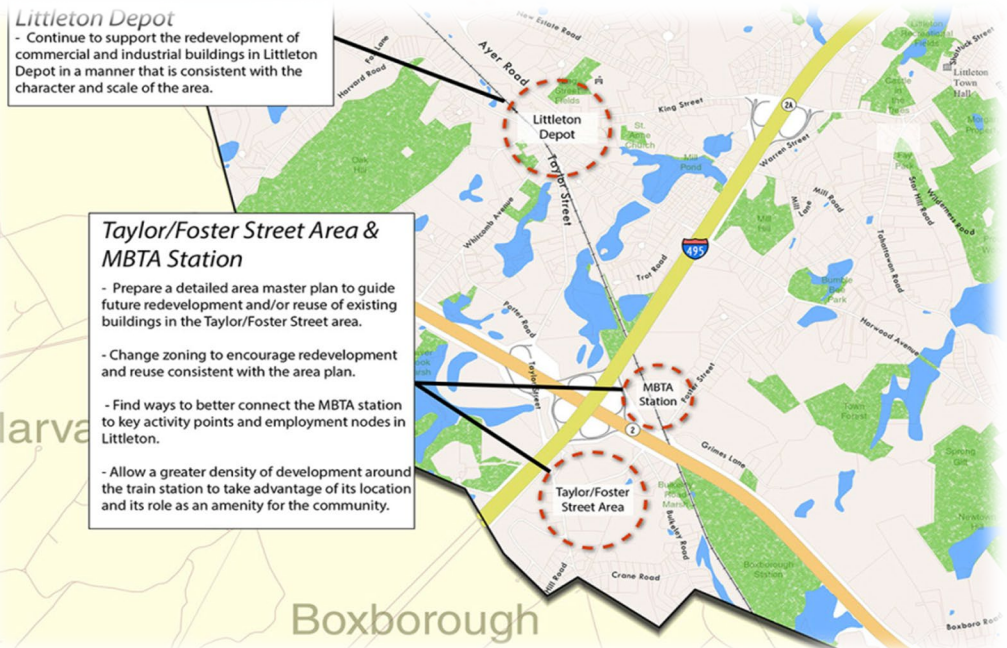
Design should support recommendations and findings identified in 2017 Master Plan

Transportation Equity

The ability to contextually accommodate all modes of transportation, users, ages

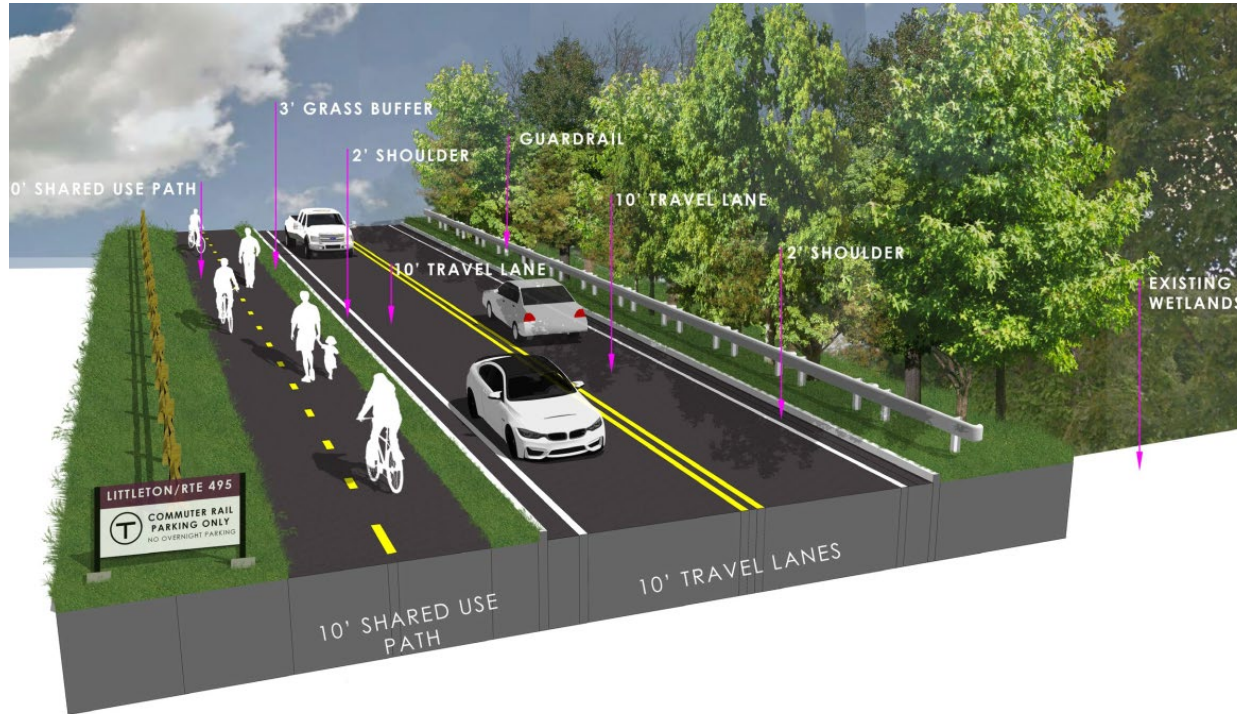
Planning for the future

Is the design sustainable for traffic projections, support economic development, and community resiliency to climate change?



Preferred Alternative

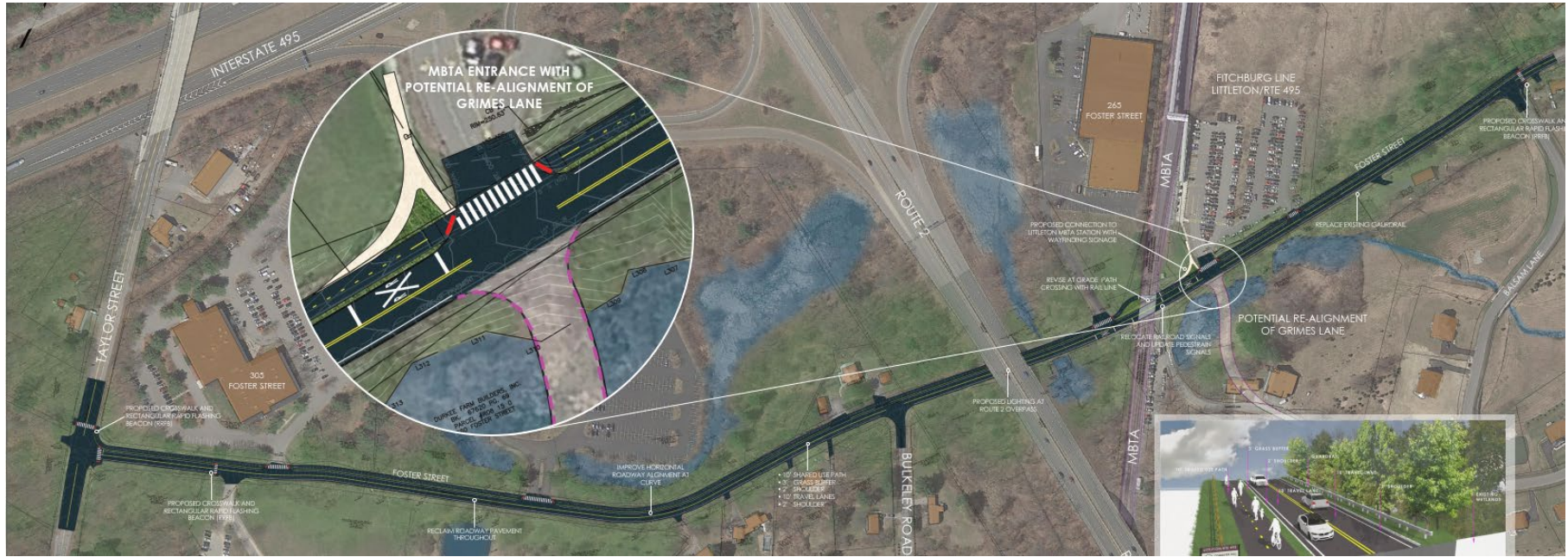
We must take a “Complete Streets” approach



Preferred Alternative: 10' Shared Use Path

- Safety for bikes significantly increases
- More attractive and conducive for non-motorized recreational usage
- Roadway width is maintained or reduced
- Least amount of ROW impact
- Grass Buffer for placement of utilities
- Improves pedestrian and bike safety at MBTA crossing
- Separate paths encourage use by wider range of population age

Initial Preferred Alternative (Fall 2018)

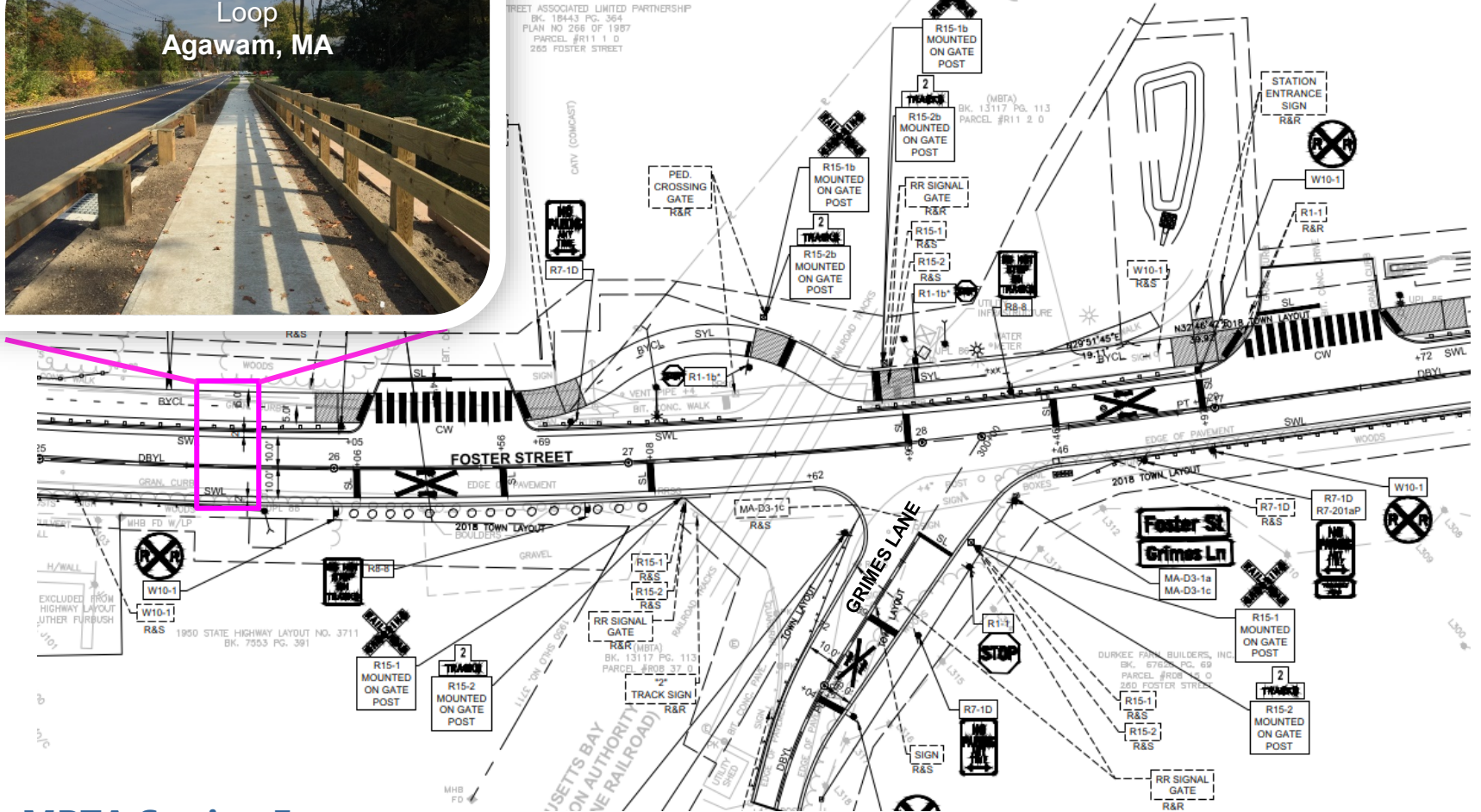


Current Estimated Total Project Cost (Includes Utility Relocations, Police Detail, Construction Contingencies)
- \$3.88 Million

Proposed Right-Of-Way

- One taking for realignment of Grimes Lane at Foster Street to improve safety
- 5 Permanent Easements
- 12 Permanent Utility Easements
- 4 Permanent Easements from MBTA
- Various Temporary Easements for Construction/grading

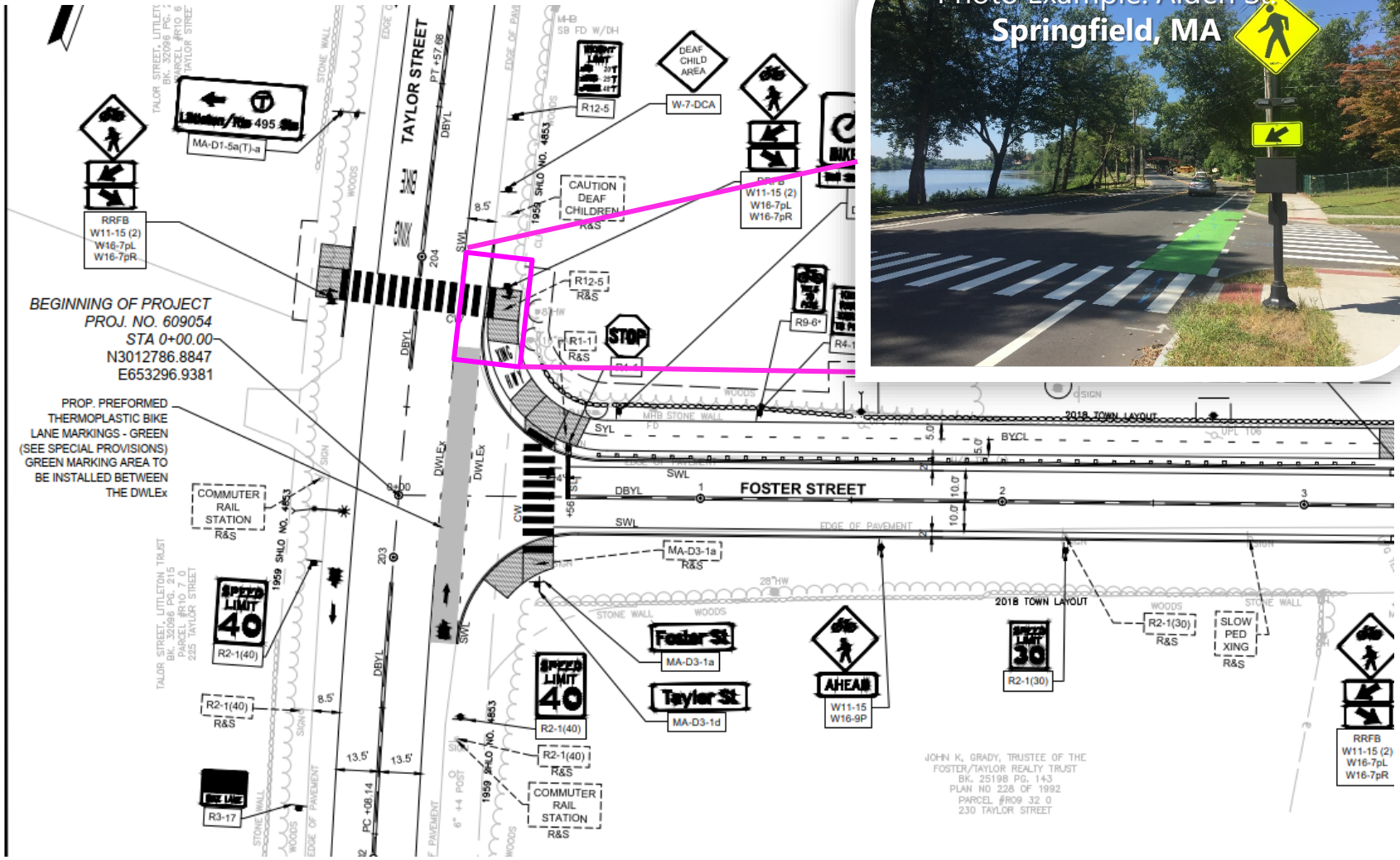
Proposed Design



MBTA Station Frontage

Re-alignment of Grimes Lane for Safety Improvement, Share-Use Path for Bike/Ped Access to Commuter Rail Line

Proposed Design



Environmental Permitting

The project design approval is subject to environmental law including:

- MEPA/NEPA (public comments)
- Massachusetts Wetland Protection Act
- Massachusetts Endangered Species Act
- Section 106 of the National Historic Preservation Act



How will traffic be affected?





ALERT: Traffic Impacts

The design **does not** propose to change any vehicular traffic patterns or impose any related congestion (ie. No new traffic signals, travel lane arrangements, etc)

Residents and daily users should expect the following impacts during construction which may result in some temporary delay:

- Daily lane closures during normal construction hours (9am-3pm)
- Uneven pavement surfaces (during pavement reconstruction)
- Parking restrictions near MBTA station within limits of Foster St.
- Temporary closure (8-12hr) of driveway aprons to allow them to be reconstructed
- Temporary disruption to water service (during flushing/testing of new water line)

PROJECT TIMELINE & NEXT STEPS



*This schedule assumes project remains programmed on the FY2024 TIP. Schedule can be accelerated if project receives funding in an earlier TIP year based on approval by the Boston Metropolitan Planning Organization (MPO).

Comments & Contact Information

Submit Comments via Mail :

Patricia A. Leavenworth, P.E;

Chief Engineer MassDOT

10 Park Plaza

Boston, MA 02116

Att. Roadway Project Management Project File No. 609054

(Must postmark mailed comments within 10 days of webinar publish date for inclusion in public hearing transcript)

Submit Inquiries or Comments via E-Mail:

dot.feedback.highway@state.ma.us

Subject: MassDOT Project File No. 609054 Reconstruction of Foster Street in Littleton, MA