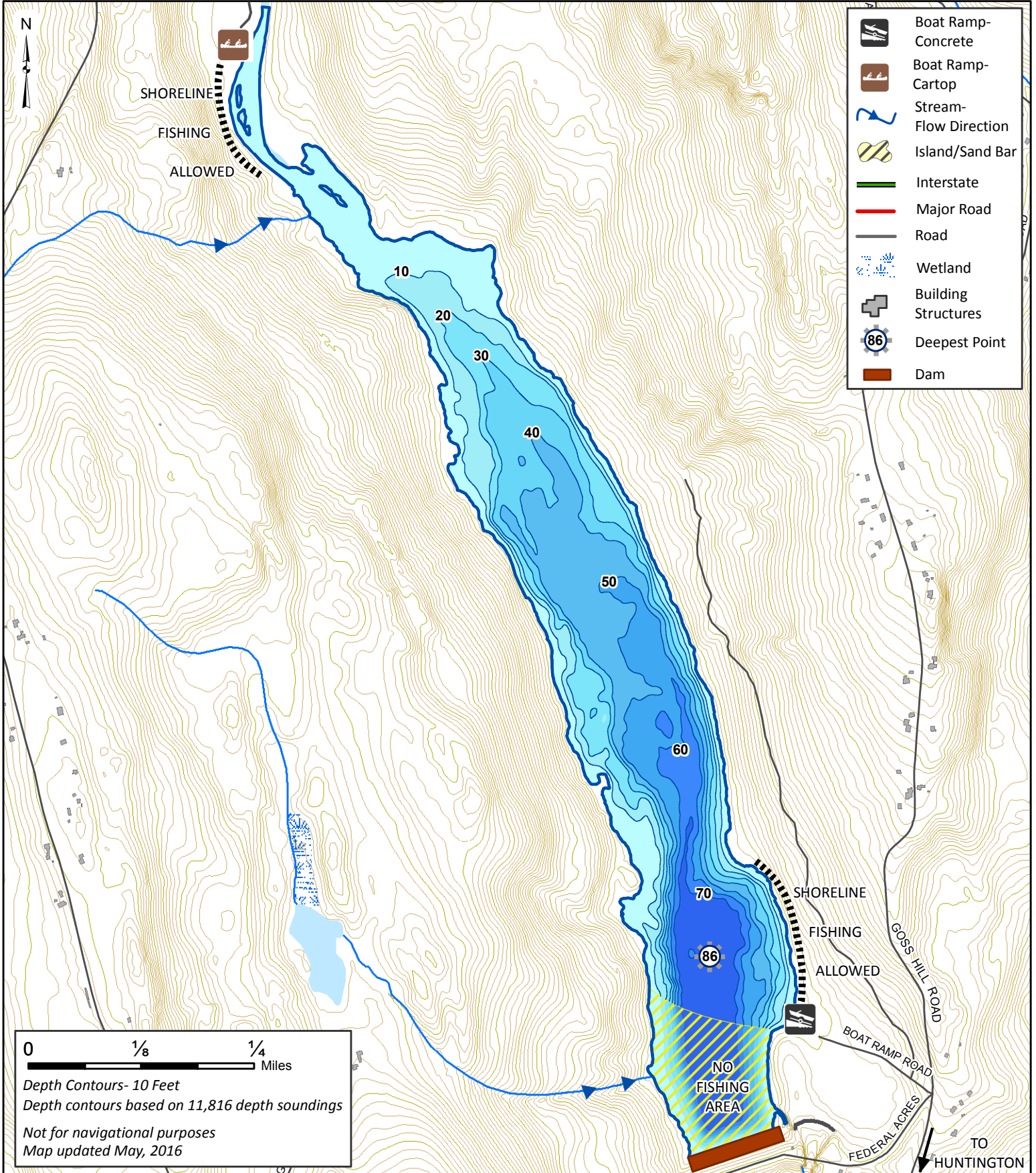
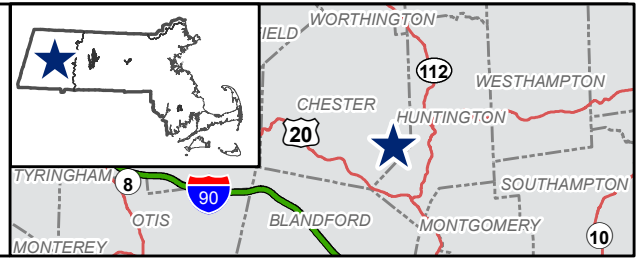




Littleville Reservoir

254 Acres
Huntington, Chester
Westfield River Watershed
Coordinates: 72°52'49"W 42°16'08"N
USGS Quad: CHESTER



- Boat Ramp- Concrete
- Boat Ramp- Cartop
- Stream- Flow Direction
- Island/Sand Bar
- Interstate
- Major Road
- Road
- Wetland
- Building Structures
- Deepest Point
- Dam

0 1/8 1/4 Miles

Depth Contours- 10 Feet
Depth contours based on 11,816 depth soundings
Not for navigational purposes
Map updated May, 2016