

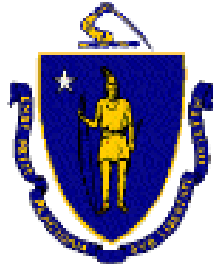
# Lowell Memorial Park Landscape Rehabilitation Project

---

CONSTRUCTION PHASE OVERVIEW

MARCH 20, 2024





# Commonwealth of Massachusetts

Governor

**Maura T. Healey**

Lieutenant Governor

**Kimberley Driscoll**

Energy and Environmental Secretary

**Rebecca L. Tepper**

Department of Conservation and Recreation Commissioner

**Brian Arrigo**

The background of the slide is a photograph of a vast, rolling landscape. In the foreground, there are dark green, densely forested hills. Beyond this, the terrain rises and falls into a series of lighter green, grassy ridges and valleys that stretch towards the horizon. The sky is filled with soft, white clouds, creating a bright but slightly overcast atmosphere. The overall scene conveys a sense of natural beauty and tranquility.

## *DCR Mission*

*To protect, promote and enhance  
our common wealth of natural,  
cultural and recreational resources  
for the well-being of all.*

## Meeting Logistics

- Two ways to ask questions during the meeting
  - Use chat feature
  - Raise your hand using the Zoom function, and you will be given permission to unmute and speak.
- *Please note that this public information meeting will be recorded; the recording will be a public record.*

# Project Team

Wendy Pearl, Director, DCR Office of Cultural Resources

Danielle Desilets, Kyle Zick Landscape Architecture, Inc.

With special thanks to:

- Cambridge Historical Commission
- Cambridge Community Preservation Act Committee
- Cambridge Plant & Garden Club

Additional DCR Staff

Dan Cushing, DCR Director of Public Engagement

Adam Parr, DCR Deputy Chief, Park Rangers



# Presentation

---

Background and Work to Date

Scope of Project

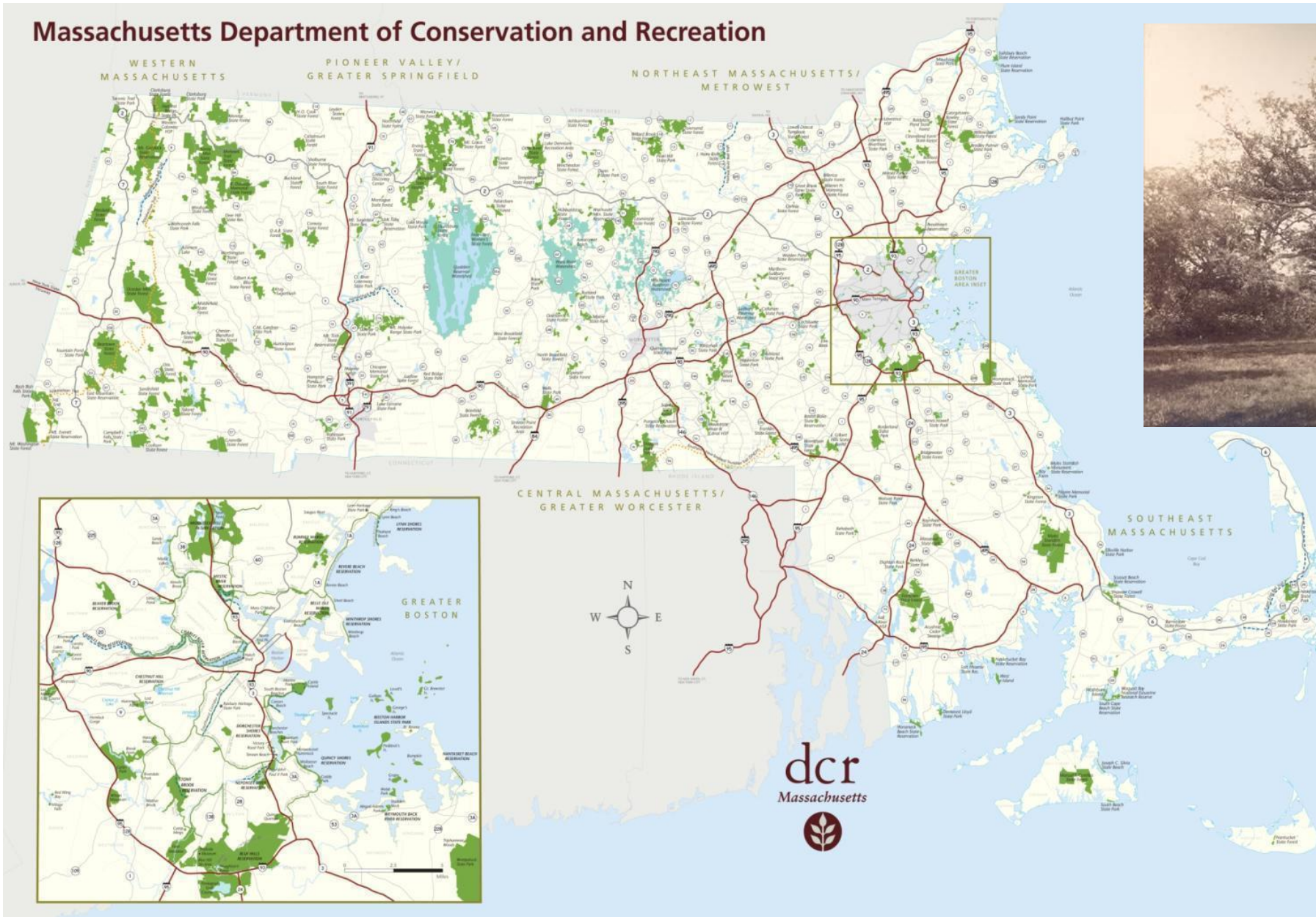
Construction Schedule

Impacts



1910 View of Lowell Memorial Park and Fresh Pond Parkway  
from Brattle Street

# Massachusetts Department of Conservation and Recreation



DCR is steward to nearly 500,000 acres of public land.

The system began with the preservation of a landscape, the Waverley Oaks in Belmont in 1893.



# America's First Regional Park System

**June 3, 1893**

Metropolitan Park System created

**1894**

Authorization to create parkways

**1898**

Lowell Memorial Park acquired as first segment of Fresh Pond Parkway

**By 1903** MPC had acquired 9,246 acres



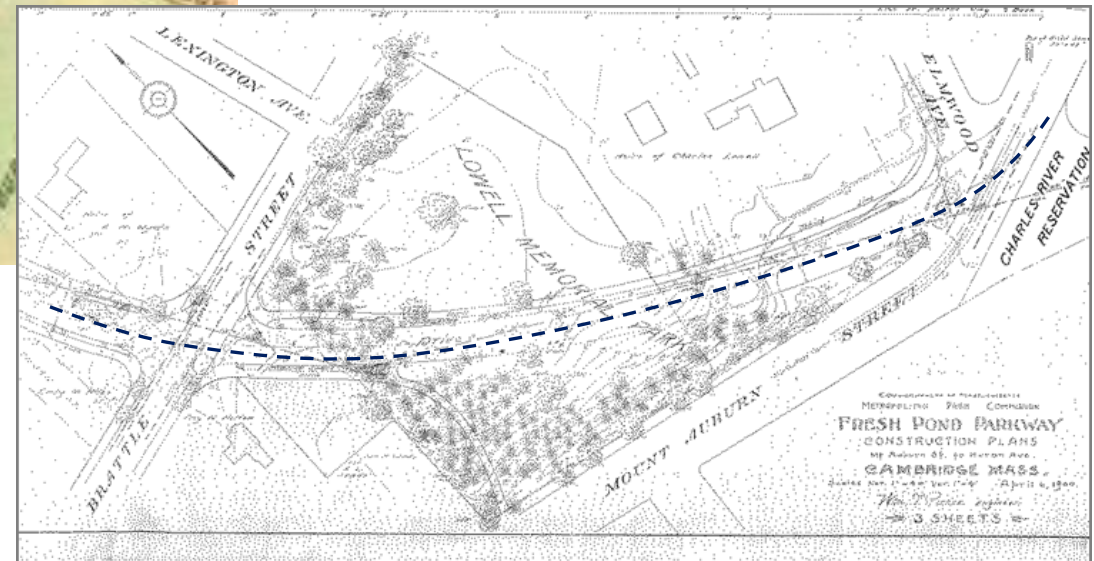


# Laying Out the Parkway



1900 Atlas of Middlesex County showing proposed layout for Fresh Pond Parkway  
(courtesy Cambridge Historical Commission)

1900 Fresh Pond Parkway Construction Plans,  
Metropolitan Park Commission  
(DCR Plans Archives)



# Lowell Memorial Park

---



Lowell's family home Elmwood is a National Historic Landmark



**James Russell Lowell (1819-1891)**

Fireside Poet and contemporary of Longfellow

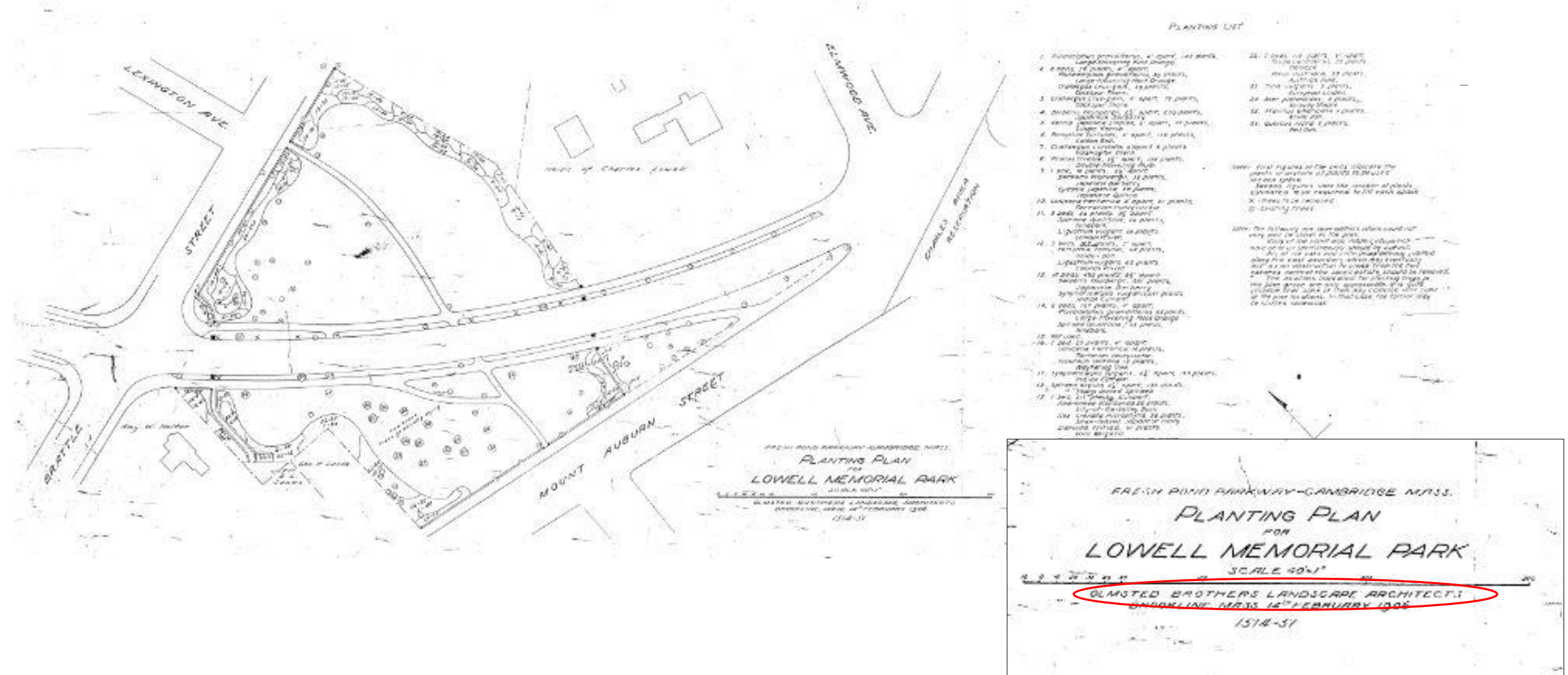
Abolitionist

Ambassador

Citizens of Cambridge raised funds to purchase the last undeveloped parcel of the Elmwood Estate, as a memorial to the noted figure.

The Metropolitan Parks Commission provided remaining funding and took ownership in 1898

# Designing the Park

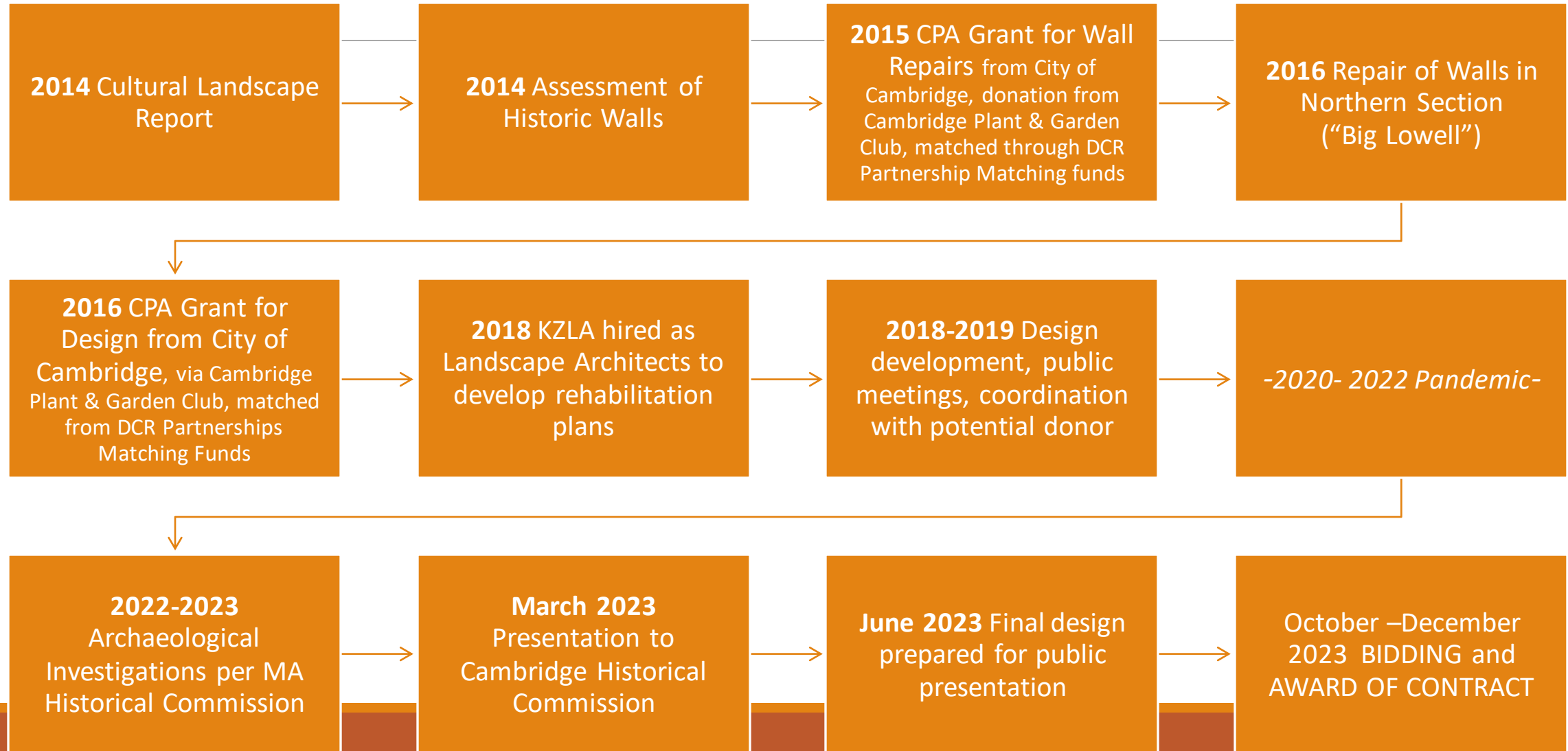






Park and Parkway

# Work to Date



# Design Highlights

## **Pedestrian Improvements**

Expanded ADA compliant pathways and benches

Increased separation between cars and people with new pathways

Widened wall opening at Mount Auburn Street

Seating area and interpretive panel near Brattle Street entrance

## **Landscape Improvements**

Preservation of lawn areas and pruning of mature trees

Planting bed along Brattle Street to evoke shrub border of original design

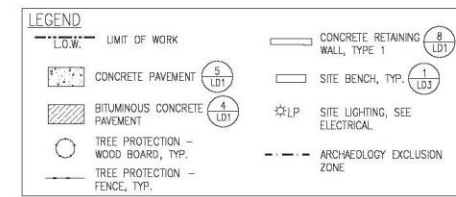
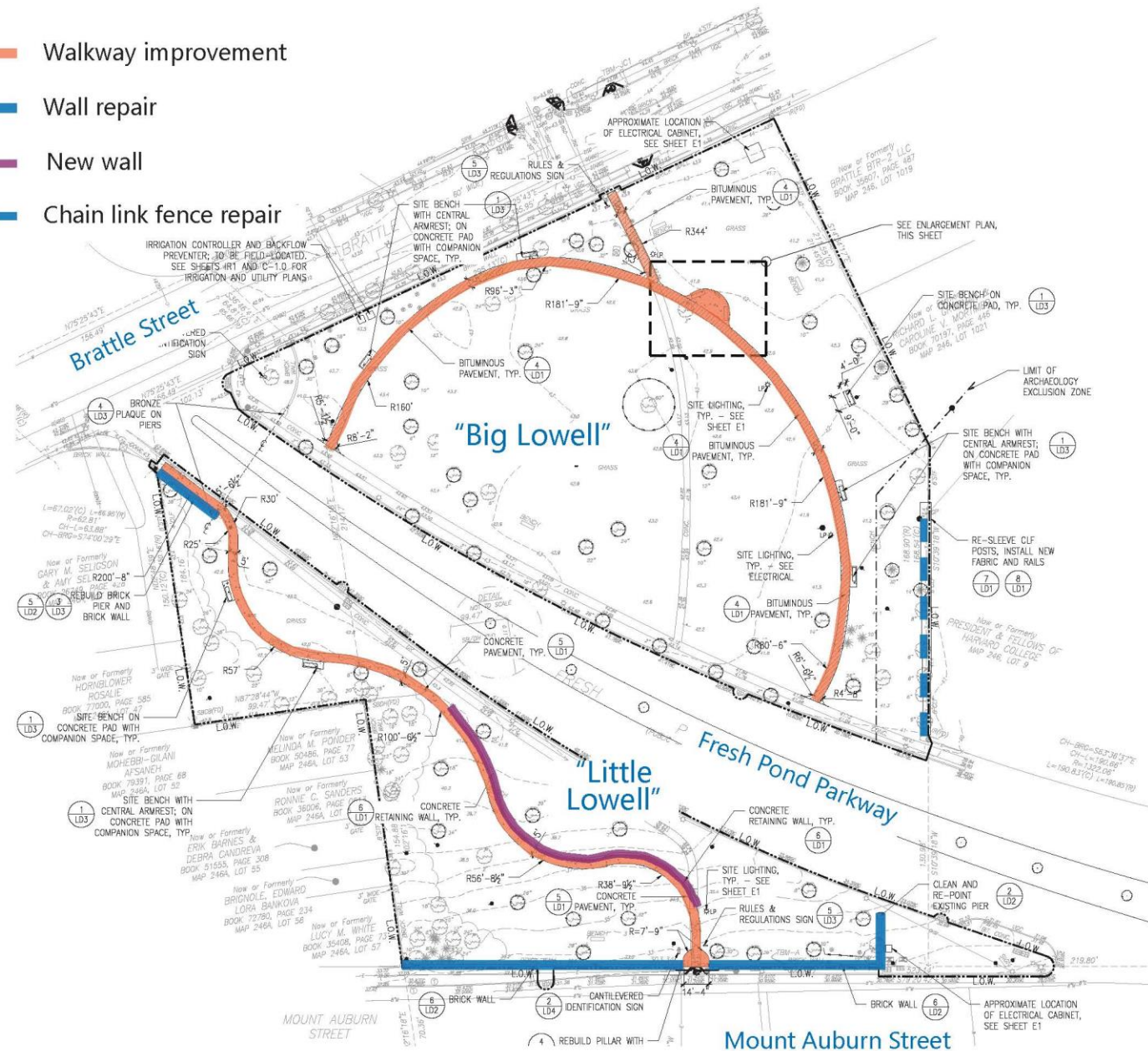
Pedestrian benches, lighting, and signage

Repairs and reconstruction of Mt Auburn Street wall

**CONTRACTED COST: \$1,220,700**

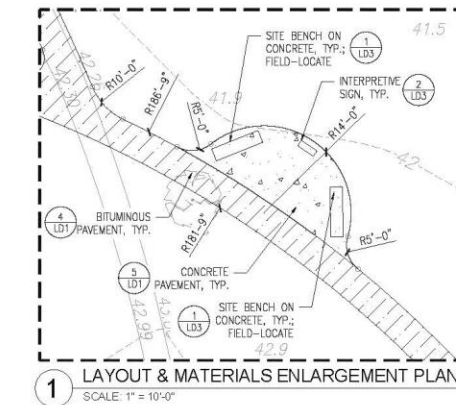


- Walkway improvement
- Wall repair
- New wall
- Chain link fence repair



**LAYOUT & MATERIALS NOTES:**

1. SURVEY WAS PERFORMED IN 2018 BY FELDMAN LAND SURVEYORS, BOSTON, MA.
2. ALL LINE AND GRADE WORK PER DRAWINGS AND SPECIFICATIONS SHALL BE LAID OUT BY A REGISTERED CIVIL ENGINEER OR SURVEYOR ENGAGED BY THE CONTRACTOR.
3. ALL LINES AND DIMENSIONS ARE PARALLEL OR PERPENDICULAR TO THE LINES FROM WHICH THEY ARE MEASURED UNLESS OTHERWISE INDICATED.
4. STORAGE AREAS FOR CONTRACTOR'S EQUIPMENT AND MATERIALS SHALL BE IN AND WITHIN LIMITS OF WORK AS SHOWN ON PLANS AND AS APPROVED BY THE LANDSCAPE ARCHITECT.
5. CONTRACTOR SHALL VERIFY ALL EXISTING CONDITIONS IN THE FIELD AND REPORT ANY DISCREPANCIES IN THE SITE SURVEY TO THE LANDSCAPE ARCHITECT PRIOR TO STARTING WORK.
6. ALL LAYOUTS FOR WALKS AND PATHS SHALL BE ADEQUATELY STAKED BY THE CONTRACTOR AND APPROVED BY THE LANDSCAPE ARCHITECT PRIOR TO CONSTRUCTION.
7. THE CONTRACTOR SHALL ESTABLISH PERMANENT CONSTRUCTION BENCH MARKS. MAINTAIN ALL ESTABLISHED BOUNDS AND BENCH MARKS AND REPLACE AS DIRECTED ANY WHICH ARE DESTROYED OR DISTURBED.
8. CONTRACTOR SHALL COORDINATE LOCATION OF ALL UTILITIES (LINES, DUCTS, CONDUITS, SLEEVES, FOOTINGS, ETC.) WITH LOCATIONS OF PROPOSED LANDSCAPE ELEMENTS (WALLS, FENCE, FOOTINGS, TREE ROOTBALLS, PROPOSED LIGHTING FOOTINGS, ETC.). CONTRACTOR SHALL REPORT ANY DISCREPANCIES TO LANDSCAPE ARCHITECT PRIOR TO CONTINUING WORK.
9. LIMIT OF WORK LINE IS NOTED ON DRAWINGS. CONTRACTOR IS RESPONSIBLE FOR ALL DAMAGE DUE TO OPERATIONS INSIDE AND OUTSIDE OF THE CONTRACT LIMIT LINE. ANY AREAS OUTSIDE THE LIMIT OF WORK THAT ARE DISTURBED SHALL BE RESTORED TO ITS ORIGINAL CONDITION AT NO ADDITIONAL COST TO THE OWNER.
10. PROVIDE EXPANSION JOINTS AT ALL CURBS, WALLS, STEPS, LIGHT POLE BASES, PULL BOXES, MANHOLES, ETC. AND AS SHOWN ON PLAN.
11. AUTOCAD FILE WILL BE PROVIDED TO THE CONTRACTOR TO LAYOUT SITE IMPROVEMENTS.



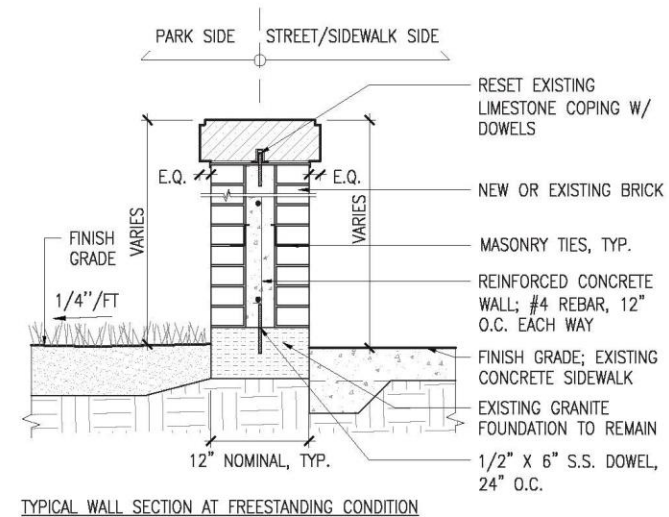
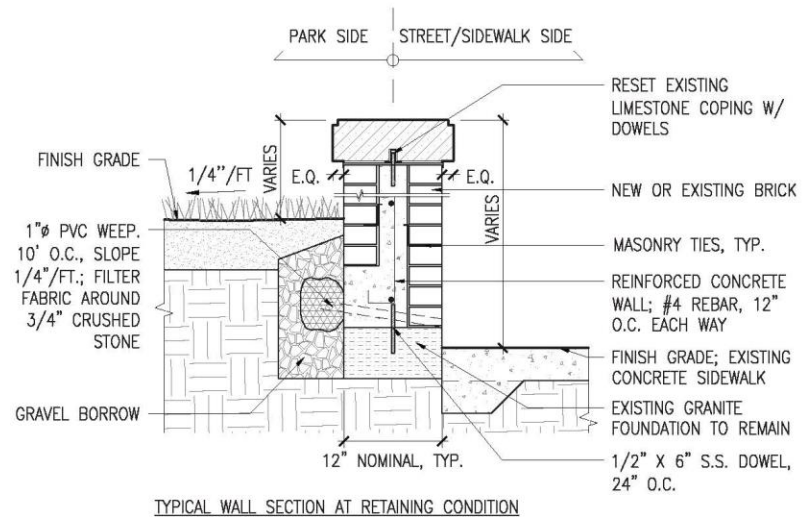
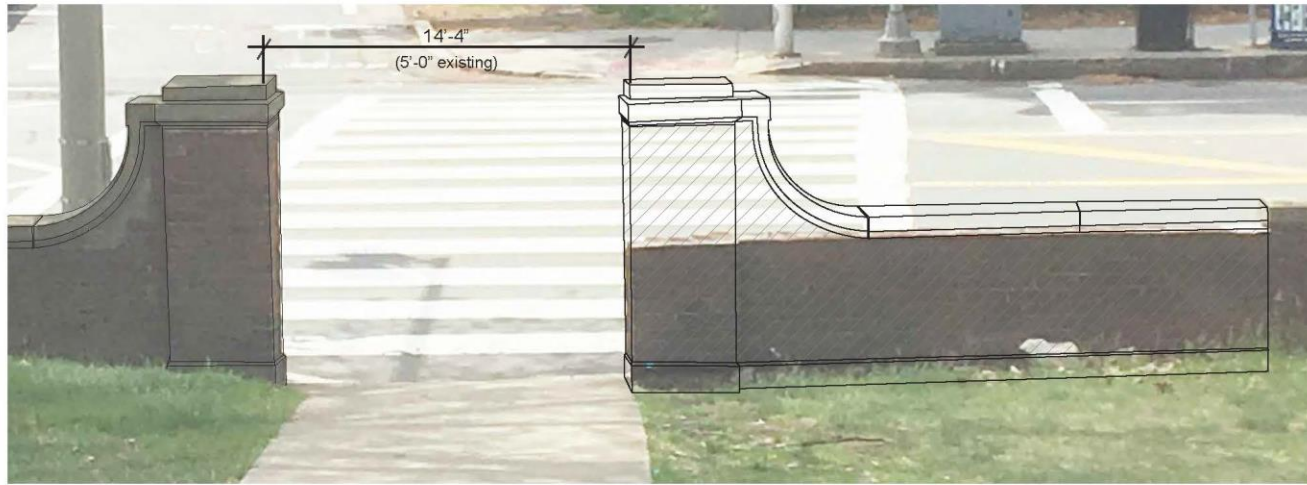
# DEPT. OF CONSERVATION & RECREATION LOWELL MEMORIAL PARK

SITE PLAN

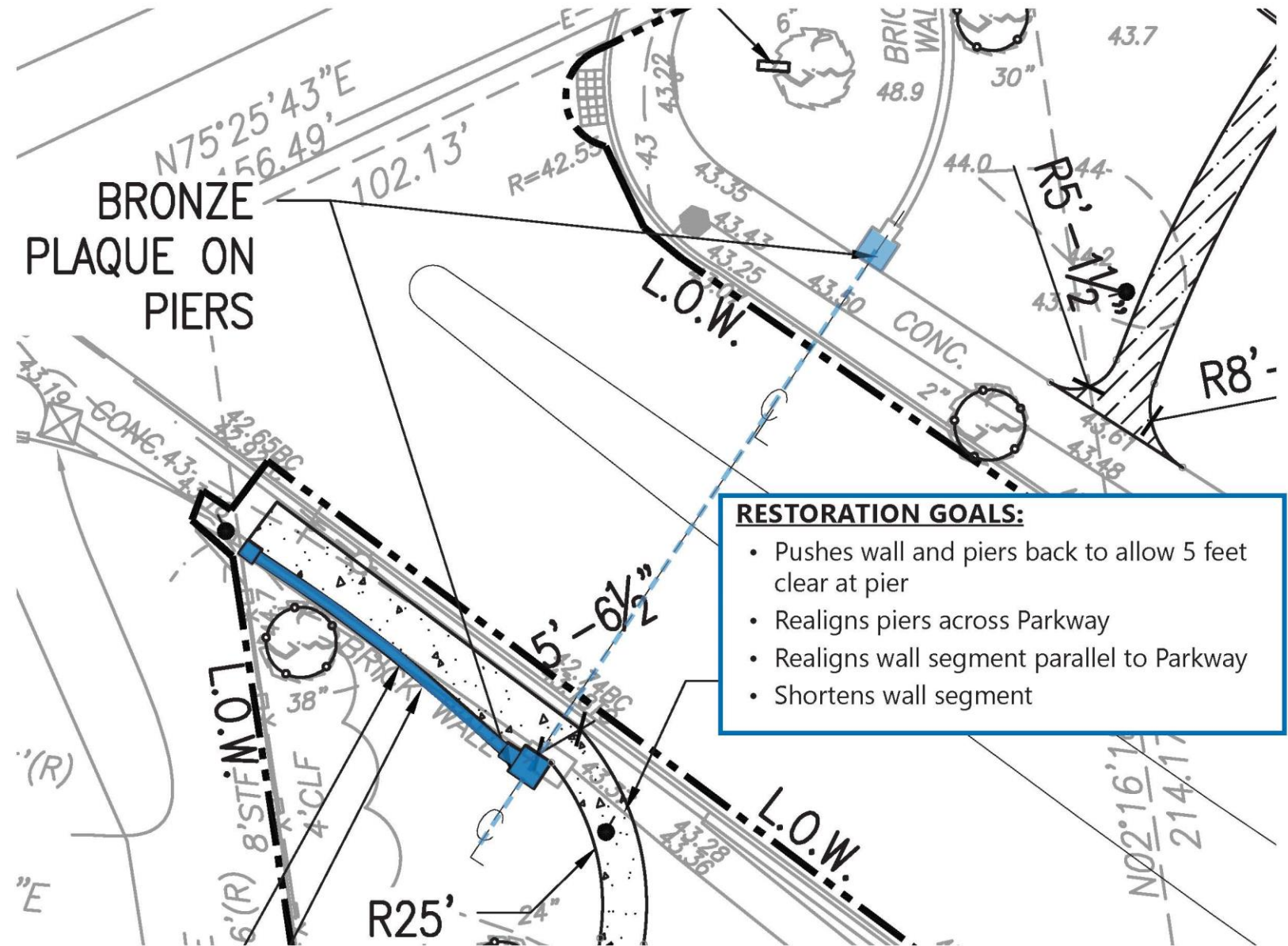
JUNE 2023

kzla





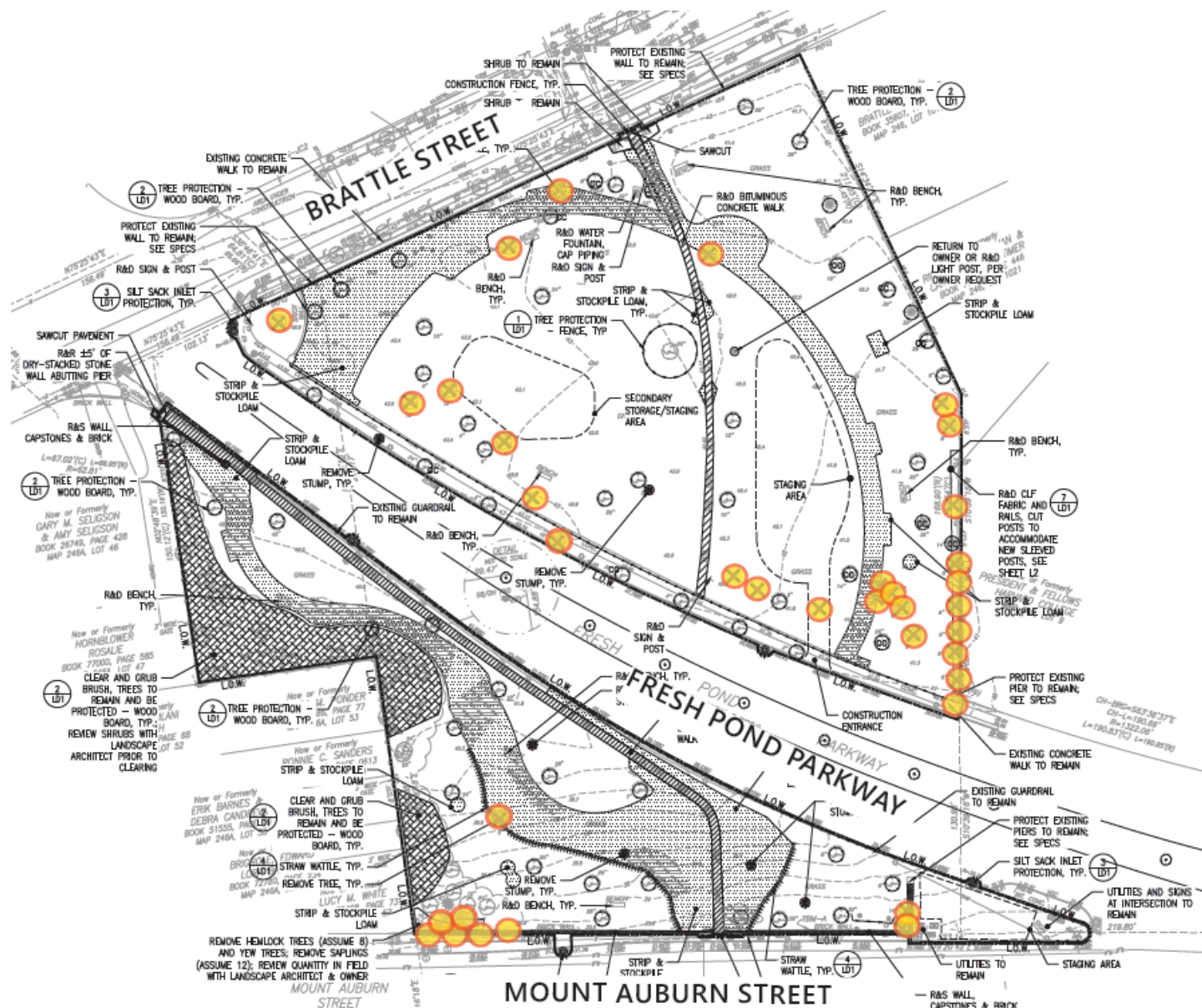








TOTAL TREES TO BE REMOVED: 33  
(+ 3 DEAD)



DEPT. OF CONSERVATION & RECREATION  
LOWELL MEMORIAL PARK





MARCH 2024

# Tree Removals by Size

2"	green ash – dead (Little Lowell)
14"	Norway maple – against wall at Little Lowell
12"	Norway maple – against wall at Little Lowell
24"	elm – against wall at Little Lowell
	against wall at Little Lowell
	against wall at Little Lowell
	against wall at Little Lowell
	Hemlock – dead, against wall at Little Lowell
	Yew clump – against wall at Little Lowell
2"	crabapple, dead near path at Big Lowell
6"	Norway maple, lopsided crown in path
24"	red oak near new pathway, crown is significantly damaged
6"	cherry at intersection
6"	ash in poor condition
10"	in poor condition
12"	in poor condition
2"	red oak - dead along FPP
20"	oak – poor condition, limited crown
16"	Norway by central path – poor condition
16"	Norway by central path – poor condition
6"	dogwood
6"	dogwood
10"	Juniper
10"	Juniper
10"	Juniper
6"-8"	Norway maples along fence line at Elmwood



## LEGEND

-  EXISTING TREE
-  PROPOSED TREE
-  SCIONS OF MAPLE
-  SHRUB PLANTING (IRRIGATED)

TOTAL TREES TO BE PLANTED: 33

BIG LOWELL: 14

LITTLE LOWELL: 19

1:1  
For every tree removed  
one will be planted







Swamp White Oak



Red oak



Pin oak



Norway maple



White ash







Washington hawthorn



- Leaves turn attractive shades of orange and red in fall.
- Fragrant, white flowers in clusters bloom in late spring; June
- Followed in fall by bright red fruits; persist throughout the winter



Yellowwood

- Leaves open as yellowish green, turn bright green in summer and then turn yellow in fall
- Intensely fragrant, wisteria-like, pink flowers in large, drooping, terminal panicles cover a mature tree in late spring; May



Flowering dogwood 'Celestial'



- Bracts emerge white with a green tinge, but mature to pink; April to May
- Purple-red fall foliage



Silver linden



- Fall color is an undistinguished pale green to pale yellow





Beautyberry

- Clusters of small, pink to lavender flowers bloom along the stems in summer: June to August
- Flowers are followed by clusters of lilac-violet fruits; ripen in September through October.



St. John's wort

- Large, slightly fragrant and bloom throughout the summer; June to September
- Golden yellow bloom
- Reddish-brown fruit that ripen in September and can persist well into winter.
- Dark green, lance-shaped leaves
- Reddish, twiggly stems



Deutzia

- Tiny, fragrant, bell-shaped, white flowers appear in spring; April to May



Coralberry

- Bell-shaped, white flowers with a pink tinge appear in summer (June to July) along the stems
- Flowers give way to clusters of round, coral-red berries which mature in autumn.
- Berries persist through most of the winter providing excellent color and interest to the winter landscape.





Foamflower

- Herbaceous perennial
- Foliage is evergreen in mild winters, often turning reddish bronze in autumn and winter.
- Tiny, white or pink flowers with very long stamens in May



Common selfheal

- Herbaceous perennial
- Dense spikes of purple to pink blooms from late spring to early fall
- Beneficial to pollinators



Sweet woodruff

- Herbaceous perennial
- Small, fragrant, white flowers appear in spring; April to May

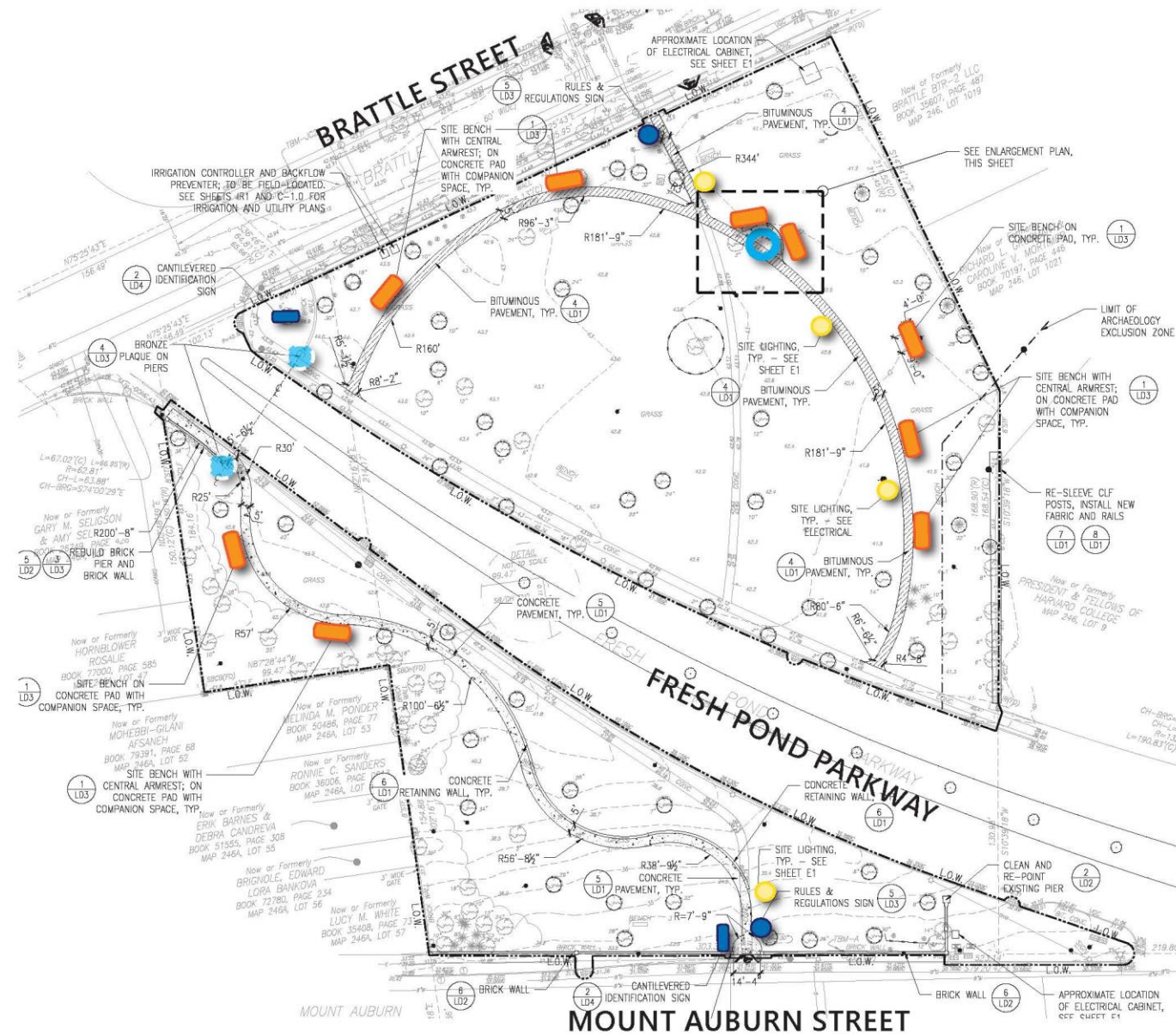
## LEGEND

-  PROPOSED LIGHT FIXTURES
-  PROPOSED BENCH
-  PROPOSED PARK ID SIGN
-  PROPOSED RULES & REGULATIONS SIGN
-  INTERPRETIVE SIGNAGE
-  HISTORIC WALL PLAQUES

TOTAL BENCHES: 9

BIG LOWELL: 7 (5 EXISTING)

LITTLE LOWELL: 2 (3 EXISTING)







KING LUMINAIRE FIXTURE: YARMOUTH  
CMT LEGACY METAL POLE: 20" COLONNADE



DCR SHURCLIFF BENCH



SAMPLE DCR PARK SIGNAGE



# Construction Schedule

4/29 – 9/1

Construction Activity	Estimated Date
Mobilization & Erosion Control	4/29 – 5/3
Tree Removal, Clearing, Grubbing	5/3 – 5/10
Site Prep Demolition (including brick wall)	5/3 – 5/27
Fence installation	5/6 – 5/10
Underground Utilities (Water)	5/27 – 5/31
Brick Wall Reconstruction	5/27 – 7/1
Cast in place concrete walls, walks, pads	5/27 – 6/28
Underground Utilities (Electrical, Irrigation)	7/1 – 7/12
Signage installation & Landscaping	7/12 – 8/12
Final clean up and demobilization	8/12 – 8/23

# Construction Impacts

---

## **Sidewalk closures**

- Little Lowell path and part of Mt. Auburn sidewalk closed for duration
- Big Lowell periodic closures for access and water line tie-in

## **Pedestrian Detour** via Brattle Street to Mount Auburn

Estimated 5-10 minutes additional walk time

## **MBTA Bus Stop** on Mount Auburn opposite Coolidge Ave closed –

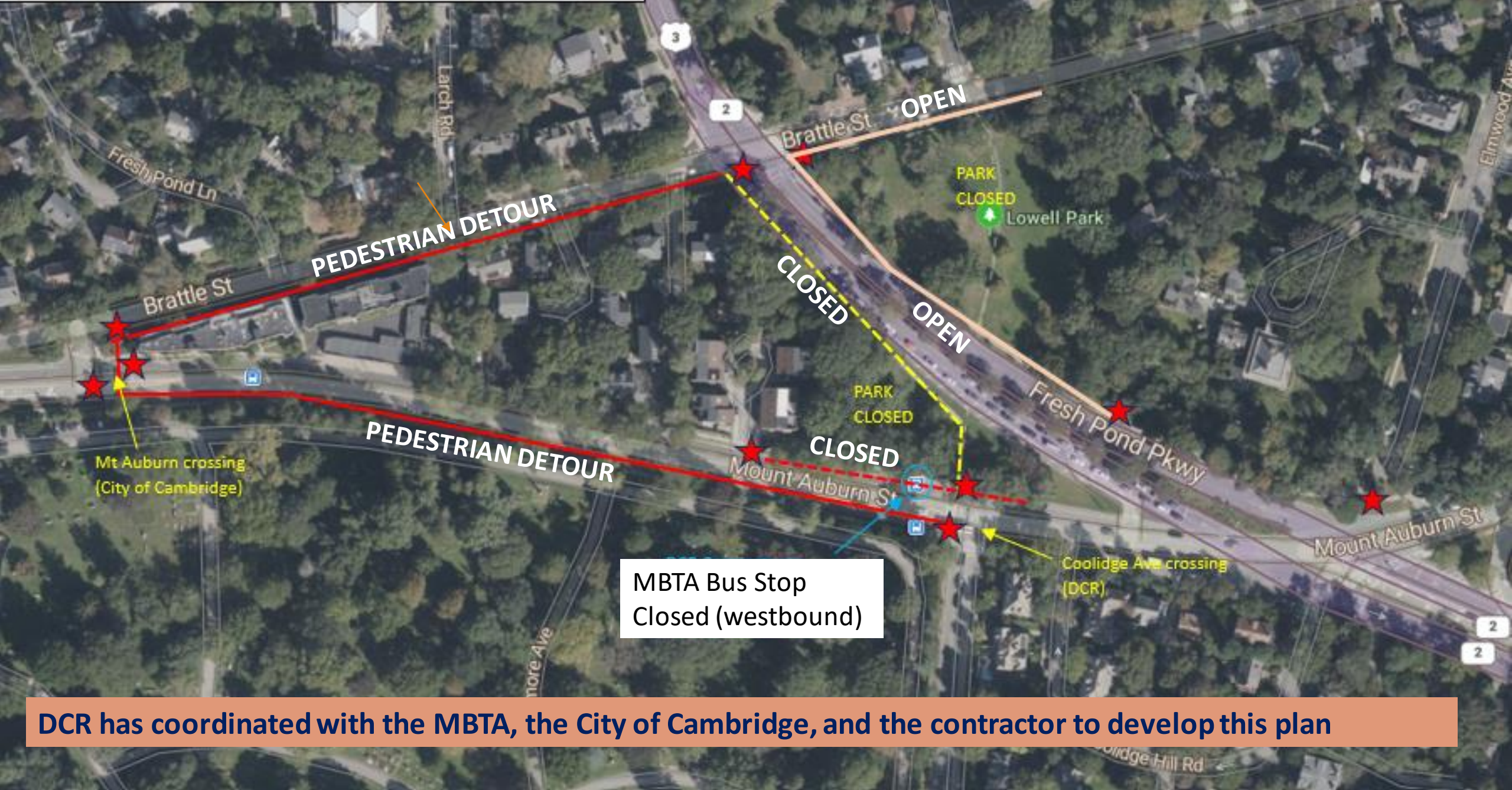
Estimated 5 minutes additional walk time to Brattle St stop



United States · MA · Middlesex Co. · West Cambr







DCR has coordinated with the MBTA, the City of Cambridge, and the contractor to develop this plan



# Summary

---

## **Long-Term Project Benefits**

- Historic preservation and improved park amenities
- ADA compliant pathways set away from Fresh Pond Parkway

## **Temporary Impacts**

- Pedestrian detours (5-10min add)
- Closed Bus stop

DCR has instructed the contractor to work on the west section of the Mt Auburn Street wall first, with the goal of opening the sidewalk and bus stop as soon as possible

# Questions and Answers

---

Two ways to ask questions during the meeting

- Use chat feature
- Raise your hand using the Zoom function, and you will be given permission to unmute and speak.

*Please note that this public information meeting will be recorded; the recording will be a public record.*