



MASSACHUSETTS DEPARTMENT OF  
CONSERVATION AND RECREATION

**Welcome!**

Intersection Improvement at Lynn Fells  
Parkway and Melrose Street, Melrose, MA

Public Information Meeting #3

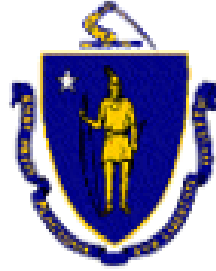
June 9, 2022

6:00 PM to 7:30 PM



## Meeting Logistics

- Two ways to ask questions during the meeting
  - Raise your hand
  - Use Q&A feature
- *Please note that this meeting will be recorded; the recording will be a public record*



# Commonwealth of Massachusetts

Governor

**Charles D. Baker**

Lieutenant Governor

**Karyn E. Polito**

Energy and Environmental Secretary

**Bethany A. Card**

Department of Conservation and Recreation Acting Commissioner

**Stephanie C. Cooper**

## Agenda

1. Welcome
2. Project Background/Context
3. Preferred Alternative
4. Next Steps (Design Development)
5. Questions



## Project Team and Local Coordination

- **Jeffrey R. Parenti, PE, PTOE, PTP, ENV SP**  
*DCR – Deputy Chief Engineer, Division of Design and Engineering*
- **Val Soroka**  
*DCR – Project Manager*
- **Daniel Cushing**  
*DCR – Director of Public Engagement*
- **Nitsch Engineering**  
*Engineering Design Consultant*
- **City of Melrose**  
*Mayor's Office*  
*Public Works Department*  
*Engineering Division*  
*School Department*  
*Planning and Community Development*



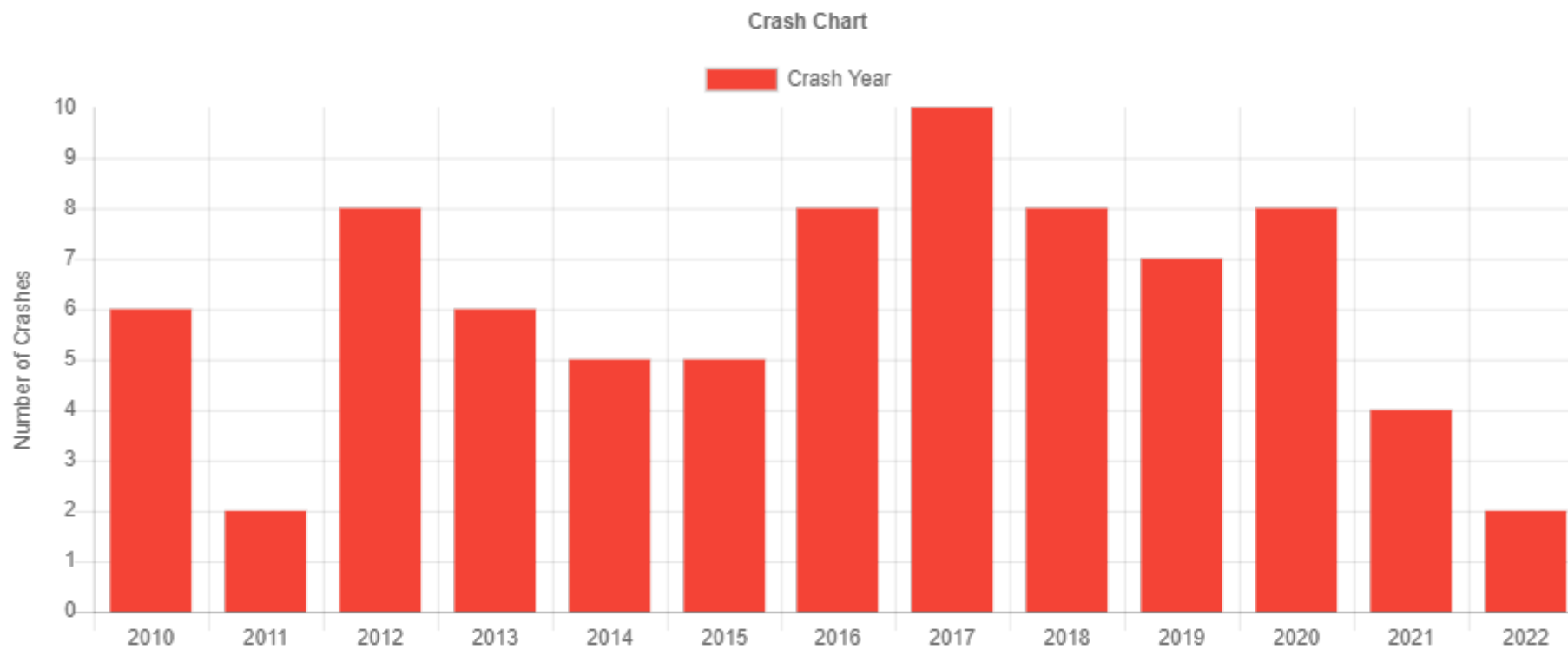
## Existing Conditions



## Previous Work and Public Meetings

- June 2019 traffic count and warrant analysis
- December 9, 2020 Public Meeting #1
  - Existing Conditions
    - Layout
    - Traffic Counts
    - Crashes
  - Design Challenges
  - Public Comment
- May 5, 2021 Public Meeting #2
  - Four Design Alternatives
  - Public Comment

## Crash History Update



Source: MassDOT IMPACT crash database and query tool



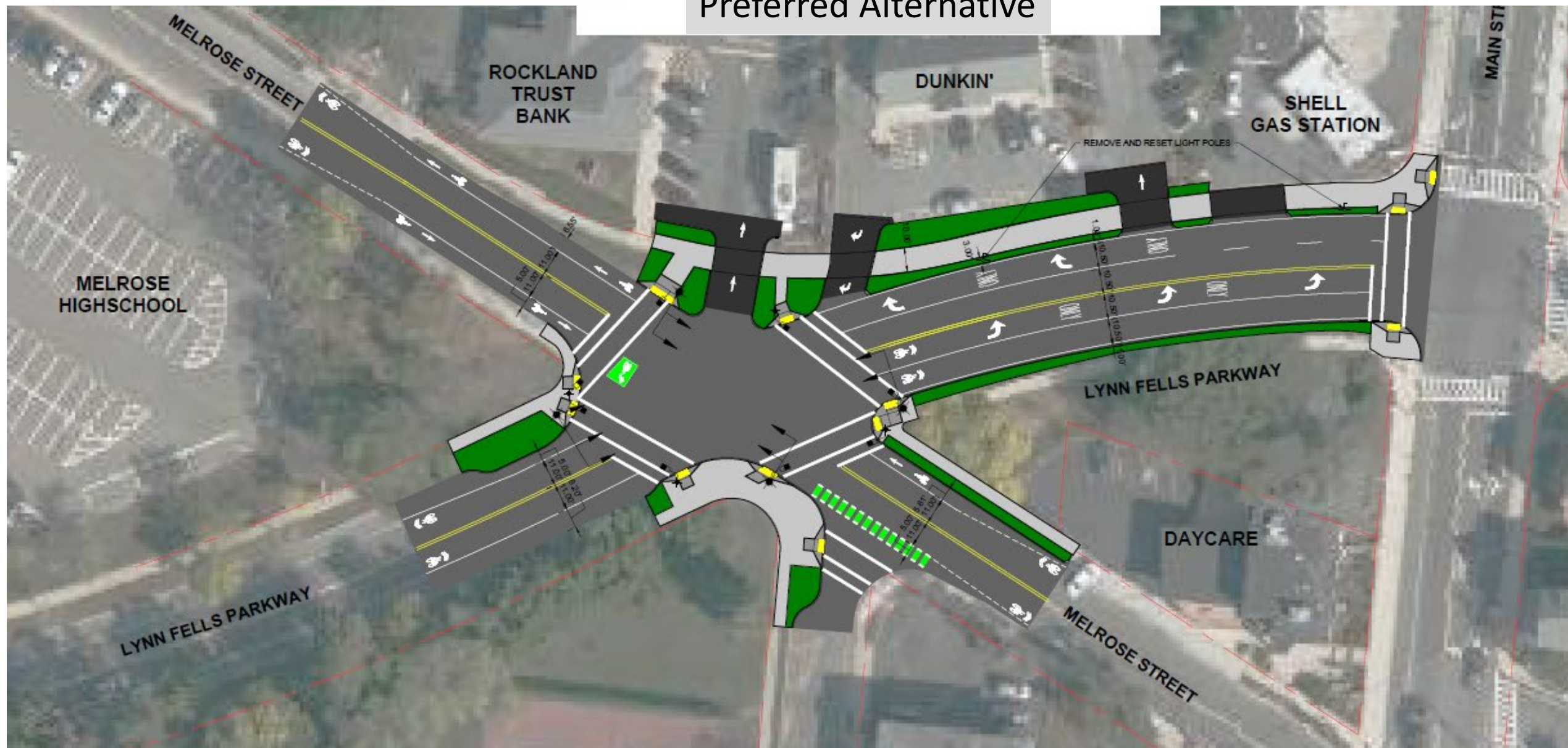


## Why the Preferred Alternative was selected

- Accomplishes safety goals of the project
- Maintains all existing access to all streets and properties
- Maintains all emergency access
- Causes no diversion of vehicle trips to City intersections
- Improves safety and access for bicycles and pedestrians
- Supported by the City
- Public comments expressed support

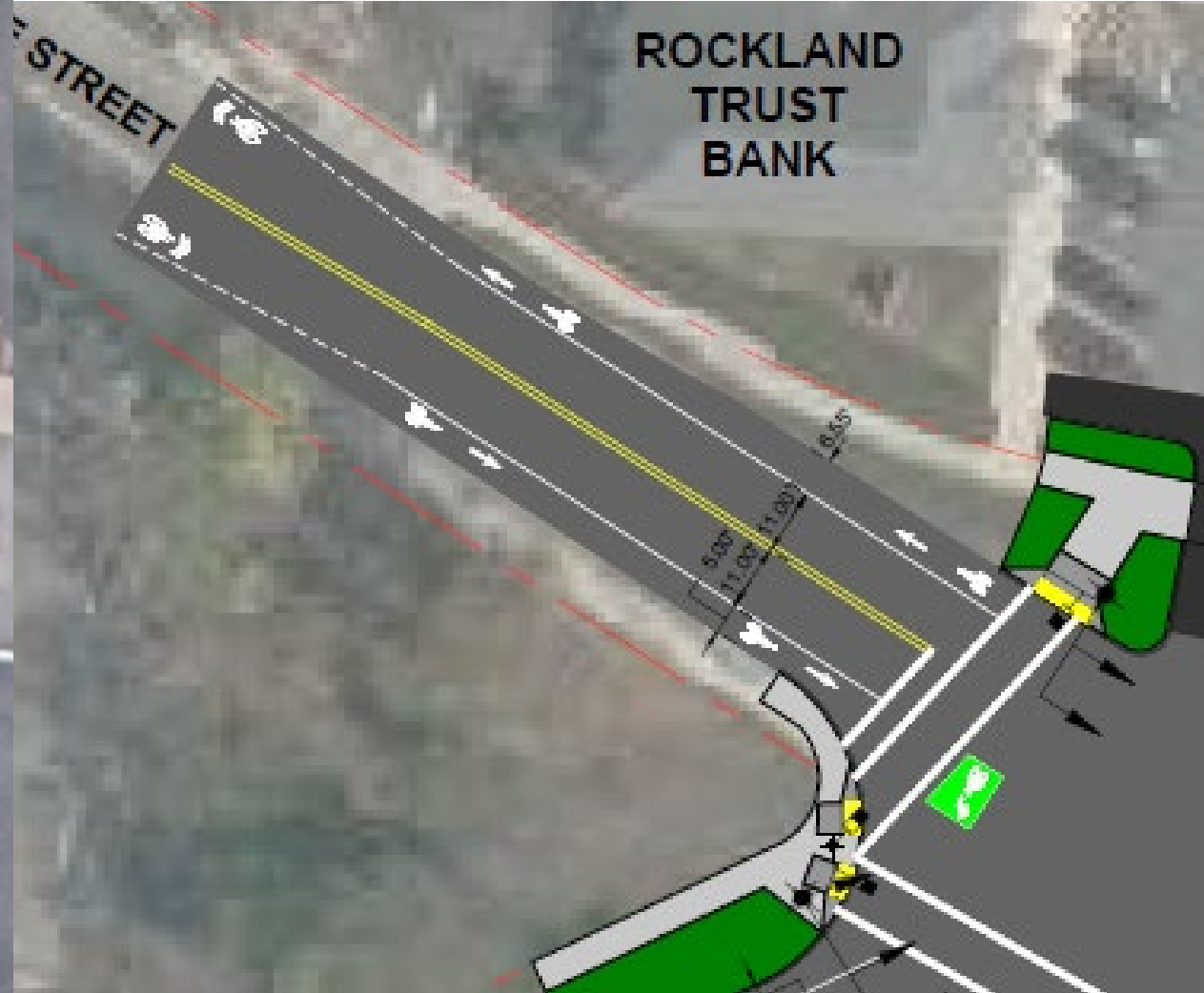
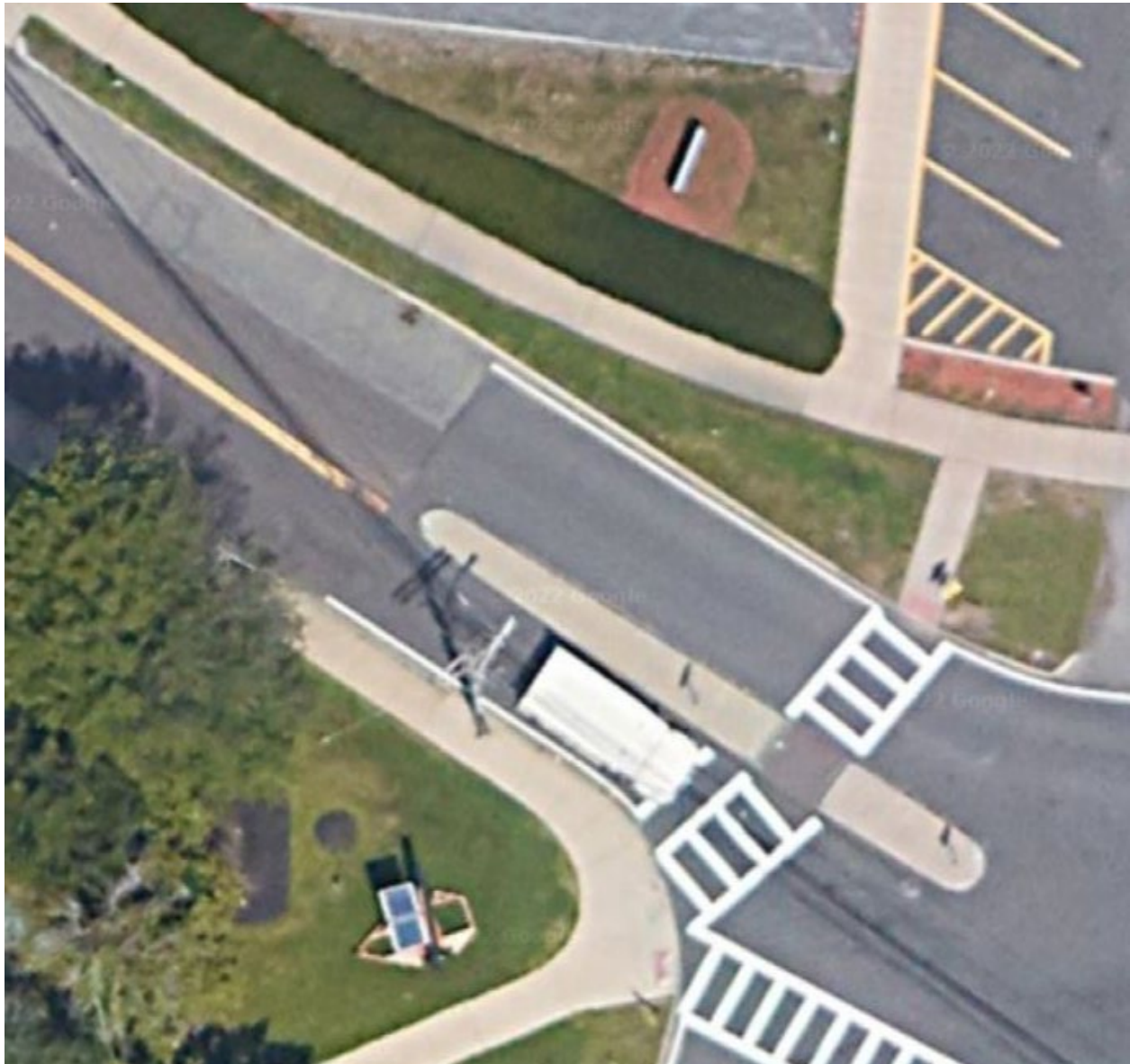


## Preferred Alternative



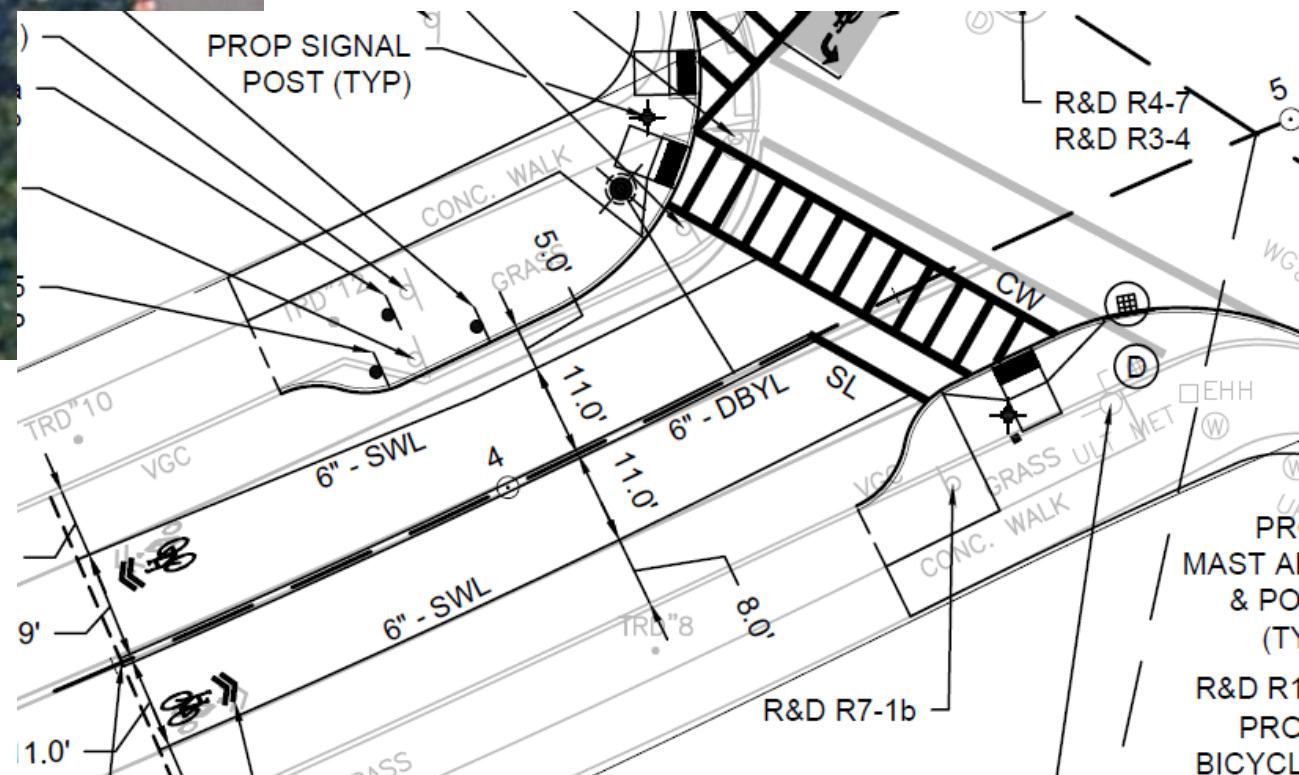
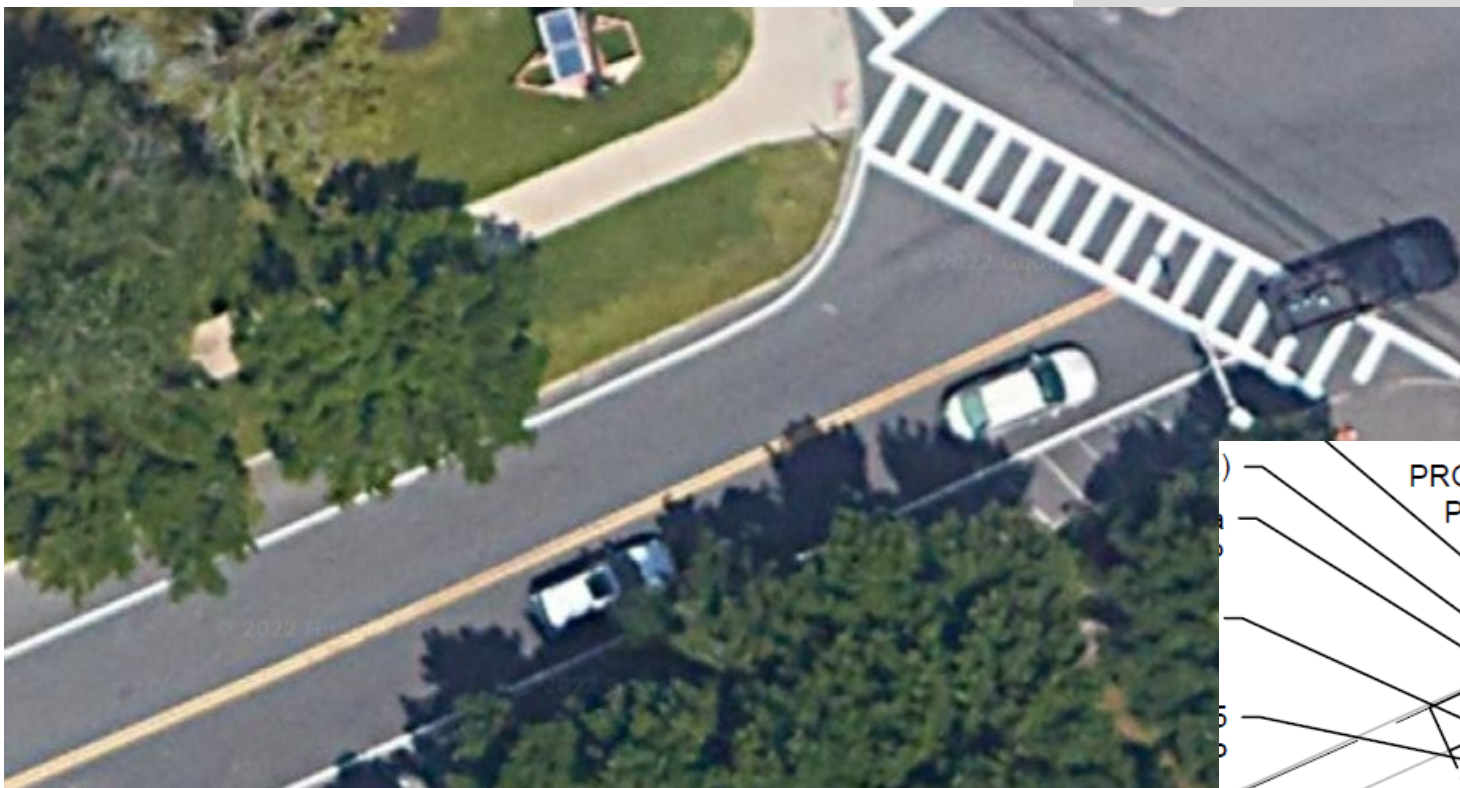


## Melrose Street Approach





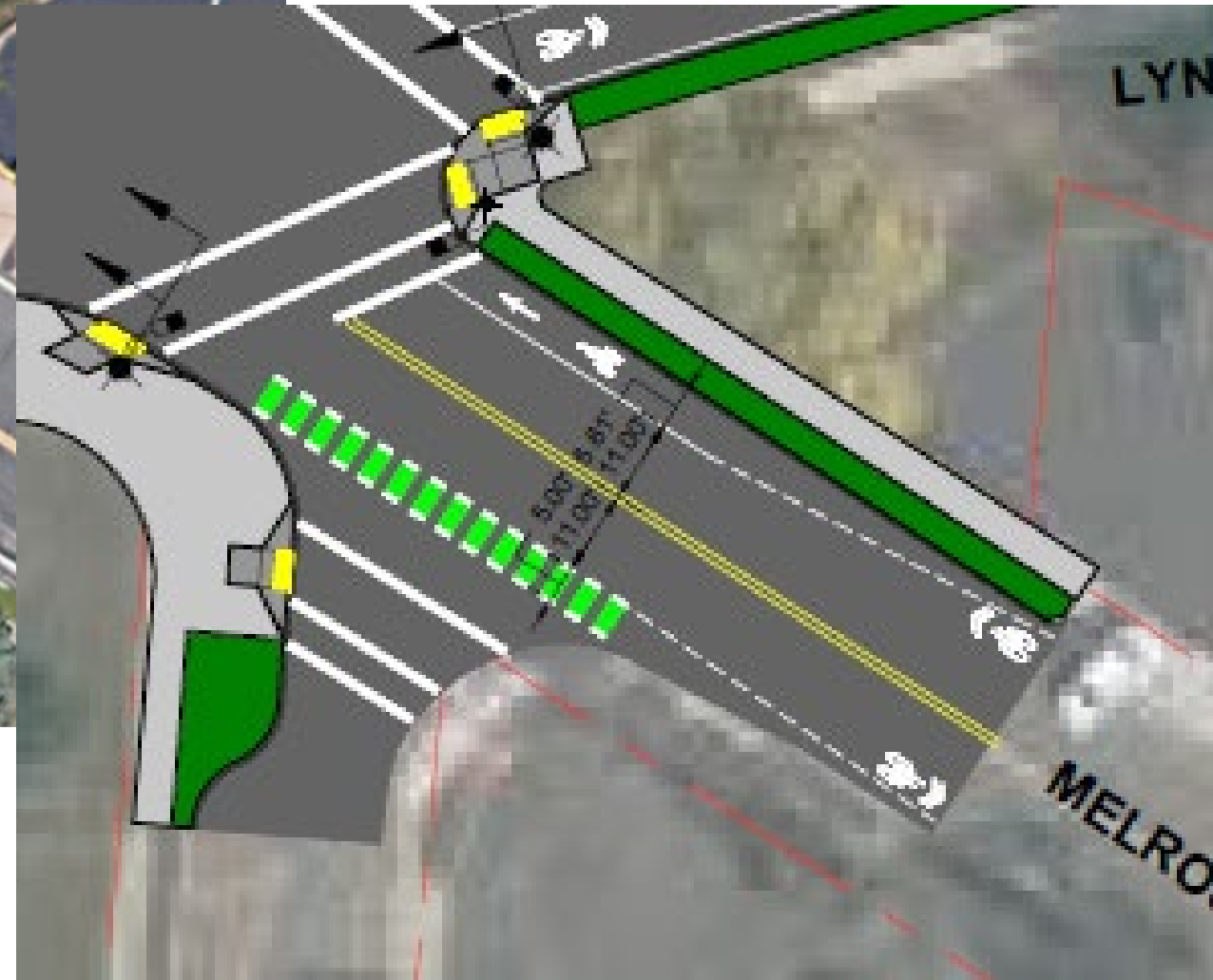
## Parkway Approach





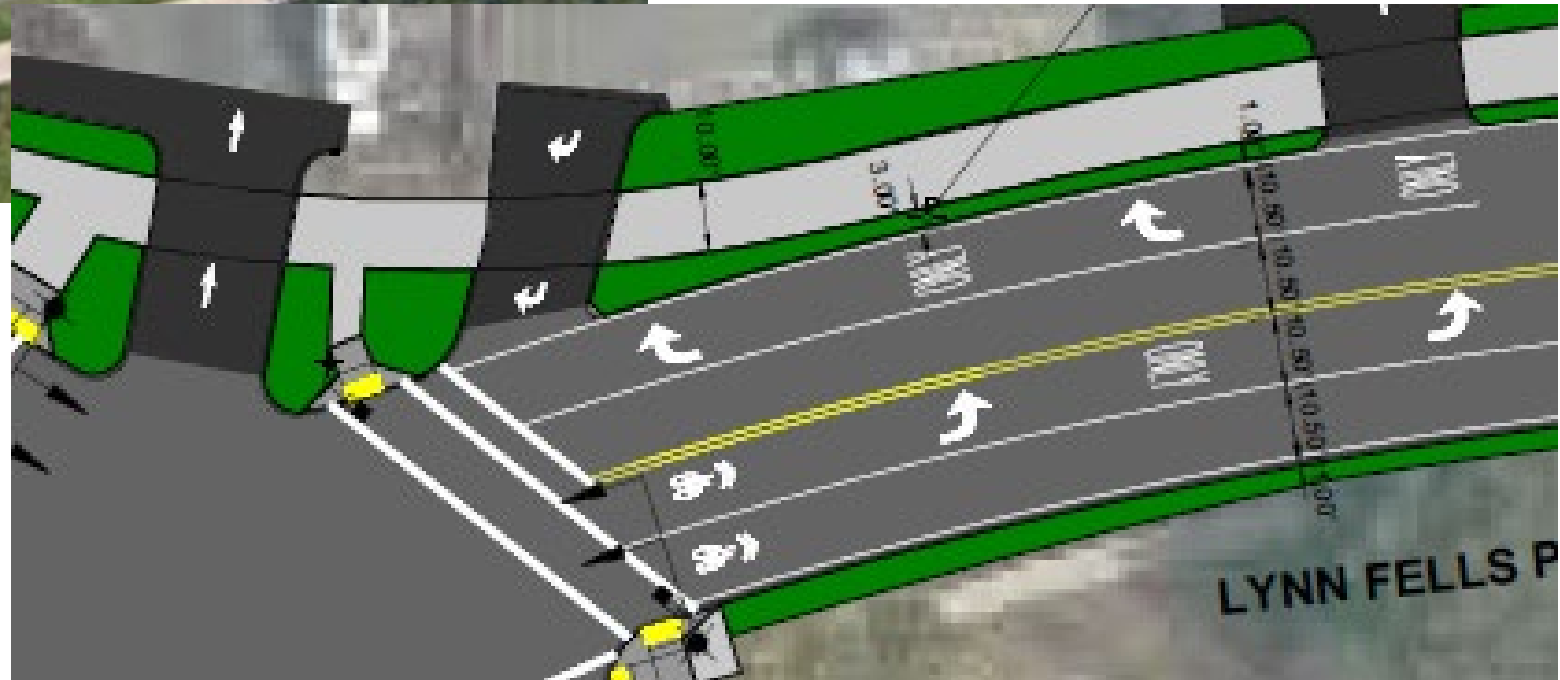


Melrose Street and Crystal Street





Parkway Approach







MASSACHUSETTS DEPARTMENT OF  
CONSERVATION AND RECREATION

## Additional Information

### **For more information:**

- [www.mass.gov/dcr/past-public-meetings](http://www.mass.gov/dcr/past-public-meetings)

**If you wish to subscribe to a DCR general information or project-related listserv:** contact DCR's Office of Community Relations at 617-626-4973 or [Mass.Parks@mass.gov](mailto:Mass.Parks@mass.gov).