



MASSACHUSETTS DEPARTMENT OF
CONSERVATION AND RECREATION

Lynn Heritage State Park + Willis Fishing Pier Renovations



DCR Public Meeting

Tuesday, January 21st, 2019 6:30 PM – 8:00 PM
Lynn Museum



Commonwealth of Massachusetts

Governor

Charles D. Baker

Lieutenant Governor

Karyn E. Polito

Energy and Environmental Secretary

Kathleen A. Theoharides

Department of Conservation and Recreation Commissioner

Jim Montgomery



DCR Mission Statement

*To protect, promote and enhance our
commonwealth of natural, cultural
and recreational resources
for the well-being of all.*

Purpose of Meeting

To provide an update on:

- Emergency repairs to the Frederick B. Willis Fishing Pier
- Improvements planned for the Lynn Heritage State Park

Project Team

Department of Conservation and Recreation
Owner

Office of Energy and Environmental Affairs
Gateway Cities Parks Program

Brown, Richardson + Rowe
Landscape Architects and Planners

Stantec Consulting Services, Inc.
Civil, Structural and Electrical Engineers

Foth Infrastructure and Environment, LLC
Coastal Engineers

Purpose of Plan:

- Vision of continuous waterfront promenade connecting open spaces from G.E. Bridge to Causeway.
- Enforceable design guidelines for all waterfront projects in Master Plan area.



Lynn Waterfront Open Space Master Plan

Project Background

Key Objectives of Plan:

- Establish a cohesive vision for the waterfront open spaces.
- Safeguard public access.
- Provide open space design guidelines.
- Plan for climate resiliency.

Lynn Waterfront Open Space Master Plan
Project Background

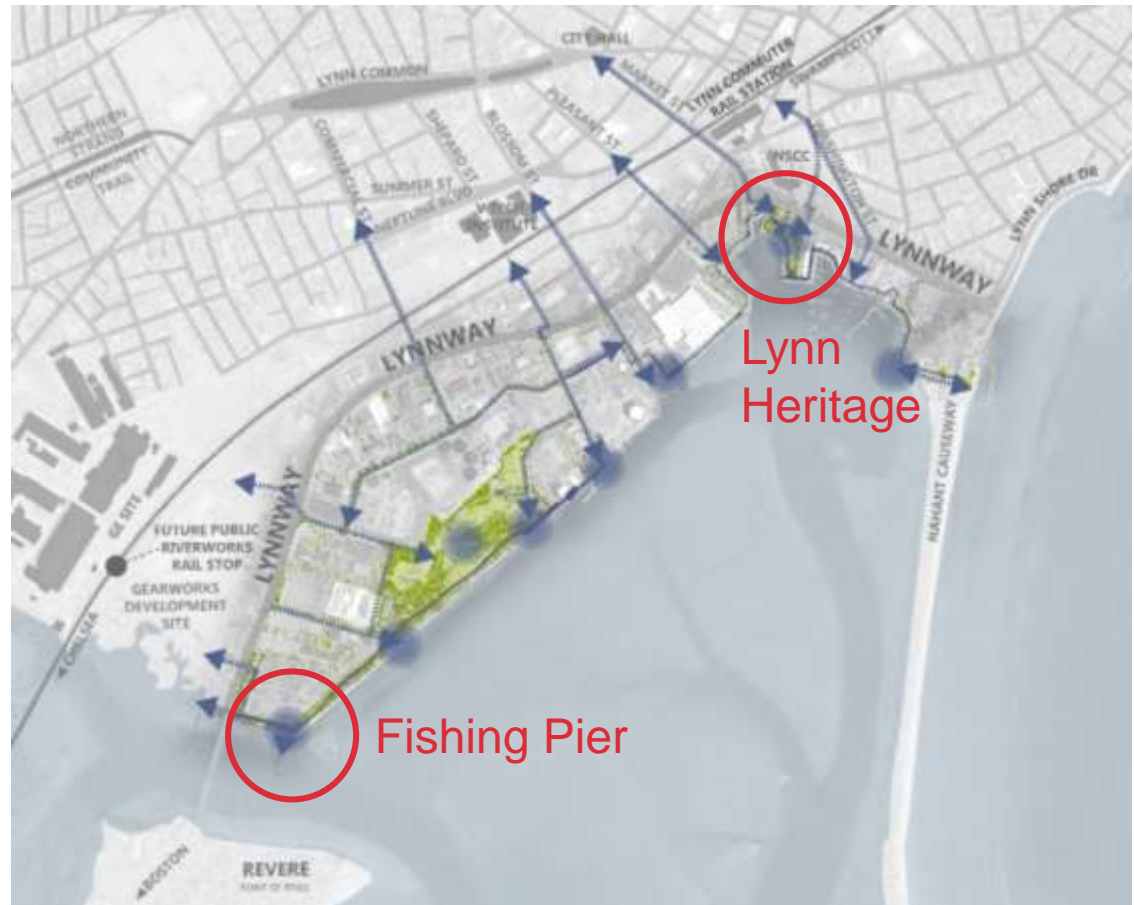
Public Process

- From 2016 to 2019. There were two site walks, four public meetings, a website, and in-person and online surveys.
- The Lynn City Council approved the Open Space Master Plan (OSMP) and Amended Municipal Harbor Plan (MHP) on September 10th, 2019.
- The City intends to formally submit the OSMP and MHP to the State for adoption, in February.



Lynn Waterfront Open Space Master Plan Project Background

- The DCR-owned Willis Fishing Pier and Lynn Heritage State Park anchor either end of the Plan area.
- A Schematic Design for each site was developed as part of the Open Space Master Plan process.



Lynn Waterfront Open Space Master Plan Project Background



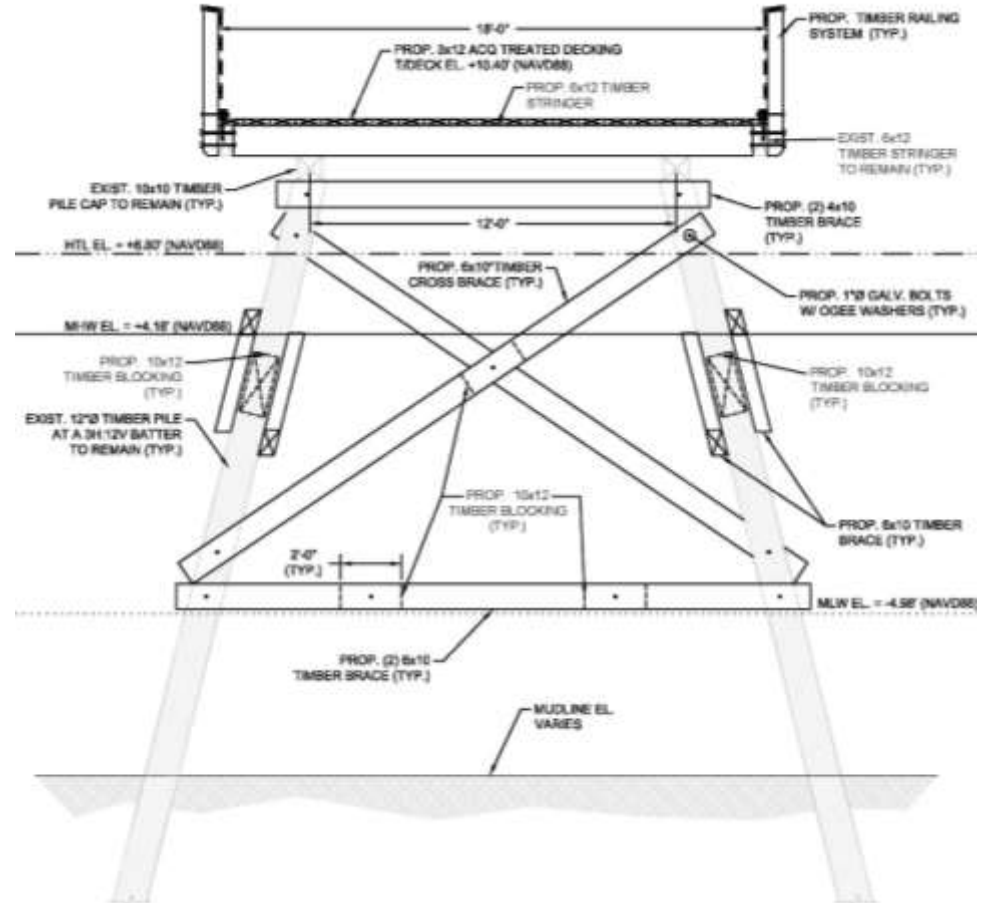
Willis Fishing Pier Renovations Overview

- Pier is currently in a state of deterioration.
- The pier is closed to the public at this time.



Willis Fishing Pier Renovations Existing Conditions

- The existing supporting timber piles will remain in place.
- The handrails, decking, benches, cross bracing, and hardware will be replaced.
- The estimated project cost is \$620,600



Willis Fishing Pier Renovations

New and improved amenities include:

- ADA accessible fishing stations.
- Fish cutting boards and fillet stations.
- New backless benches.



Willis Fishing Pier Renovations
Amenities



2020

WINTER

SPRING

SUMMER

Permits
Granted

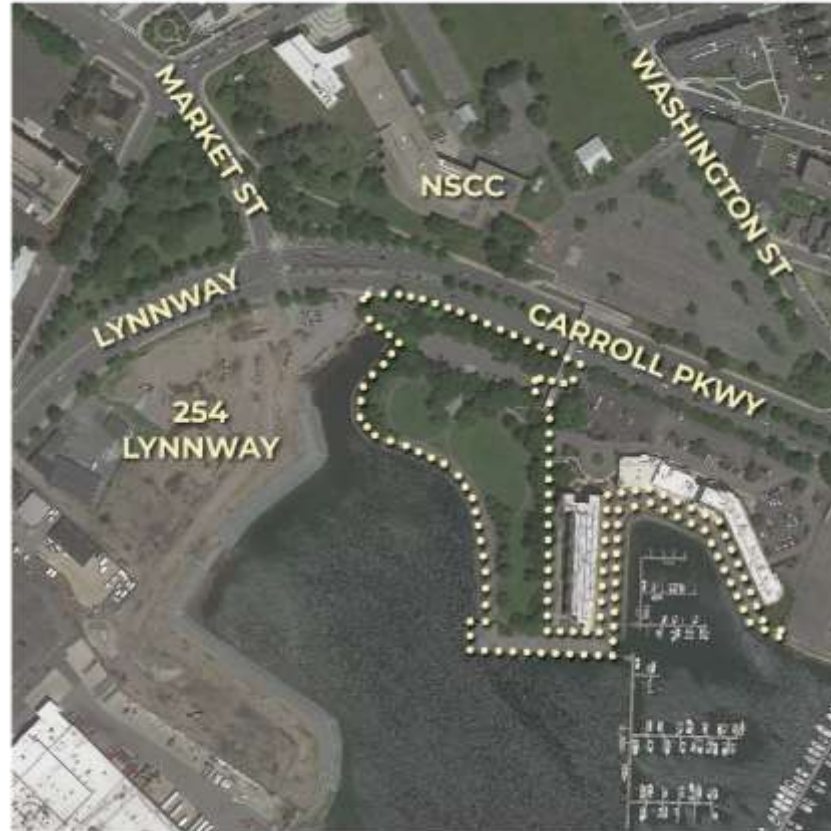
Out to Bid

Contracting
Period

Construction Period

Pier
Reopens

Willis Fishing Pier Renovations Timeline

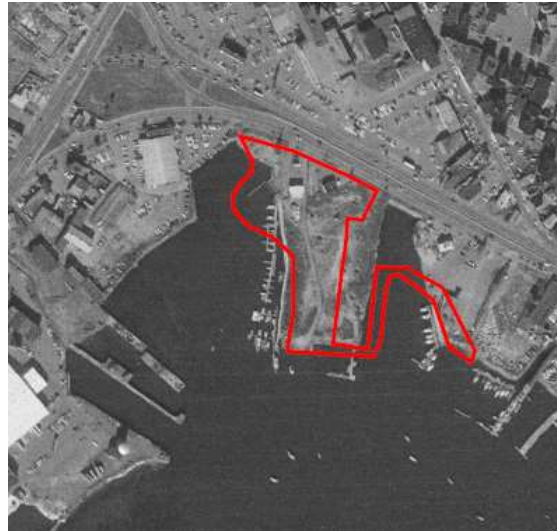


Lynn Heritage State Park Renovations Overview

1955



1970



1986



- Aerial imagery shows Park was filled into harbor over last 70 yrs.
- Park was initially opened in 1986.
- No capital investment has been made since original construction.

Lynn Heritage State Park Renovations Site Background

Current Park Challenges Include:

- Settlement of fill material throughout much of the park.
- Settlement of boardwalk in many areas.
- Failing seawall under the boardwalk.
- Declining vegetation.
- Park is under-used.

Lynn Heritage State Park Renovations
Existing Conditions

- Park settlement is causing parts of the path to warp, crack, and fall away from the seawall.
- This access path is no longer ADA accessible.
- Renovations will address settlement.



Lynn Heritage State Park Renovations Existing Conditions

- Park settlement is causing parts of the boardwalk to warp and slope.
- This access path is no longer ADA accessible.
- Renovations will address settlement.



Lynn Heritage State Park Renovations Existing Conditions

- Many trees are in poor condition or in need of removal for safety.
- Renovations will remove dangerous trees and replant 71 new trees in the park.

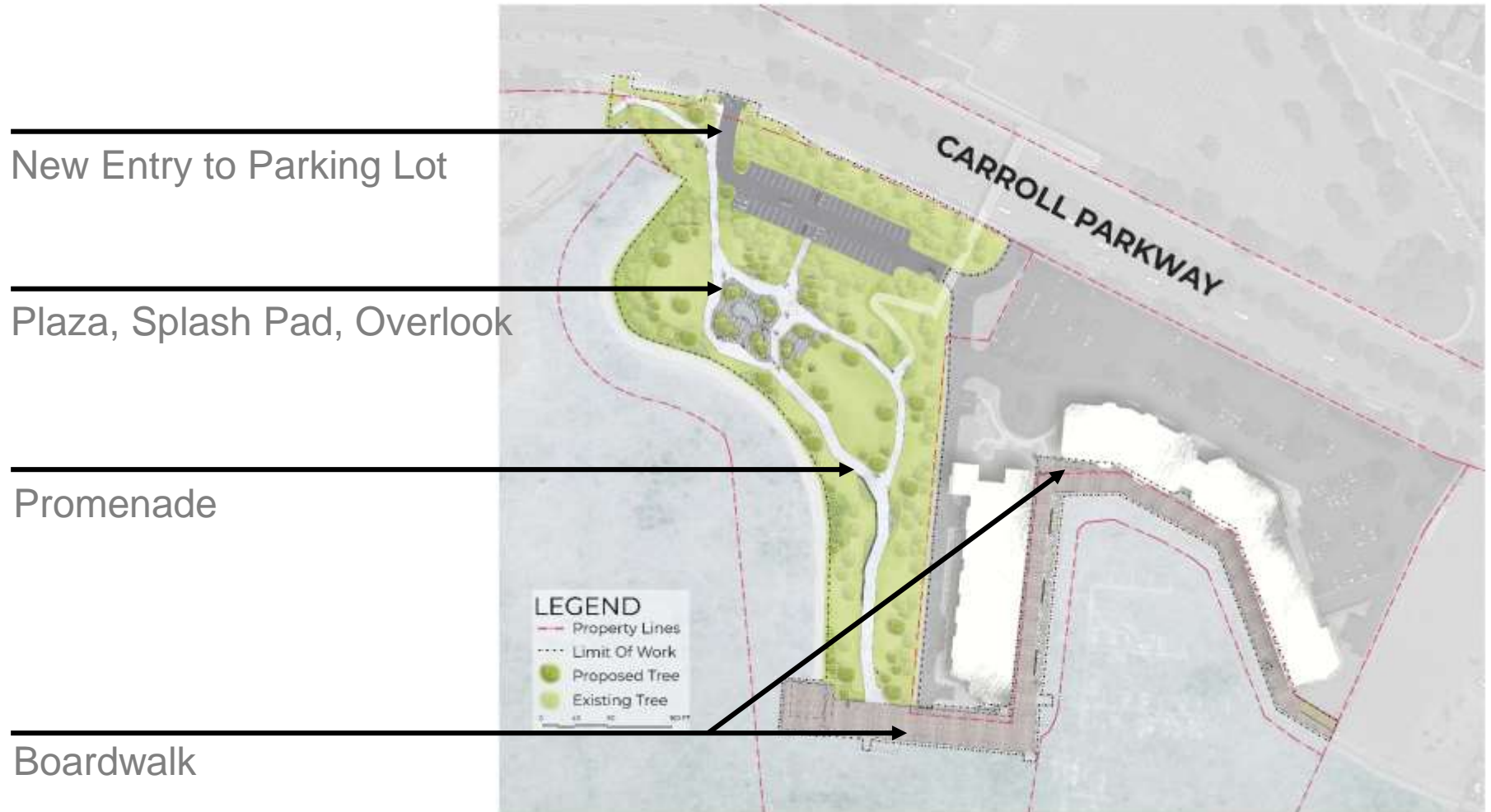


Lynn Heritage State Park Renovations Existing Conditions

Current Park Renovation Scope Includes:

- Demolition and removal of waterfront and park items.
- Park soil excavation, reinforcement, and resurfacing.
- Sheet pile bulkhead installation.
- Micro pile supported boardwalk installation.
- Splash pad installation.
- Concrete promenade and paving at plaza area.
- Granite walls, seating, and curbing.
- New benches, loungers, picnic tables, trash cans, bike racks.
- New park and promenade lighting.
- Existing tree pruning and planting of 71 trees.
- Resurfacing of all boardwalk and replacement of handrails.
- Estimated cost : \$9M.

Lynn Heritage State Park Renovations
Scope



Lynn Heritage State Park Renovations Park Activation



- New parking lot entrance
- 47 parking spaces (1 additional parking space, includes 2 accessible spaces)

Lynn Heritage State Park Renovations New Entry to Parking Lot

- New paved plaza with feature lighting, seating, splash pad, and shade tree planting
- Splash pad to have in-ground water jets and misters
- A range of areas to sit, gather or hold programmed events



Lynn Heritage State Park Renovations Plaza, Splash Pad, Program Zone



Urban Splash Pad



Active Lawn with Views

Lynn Heritage State Park Renovations

New Park Features

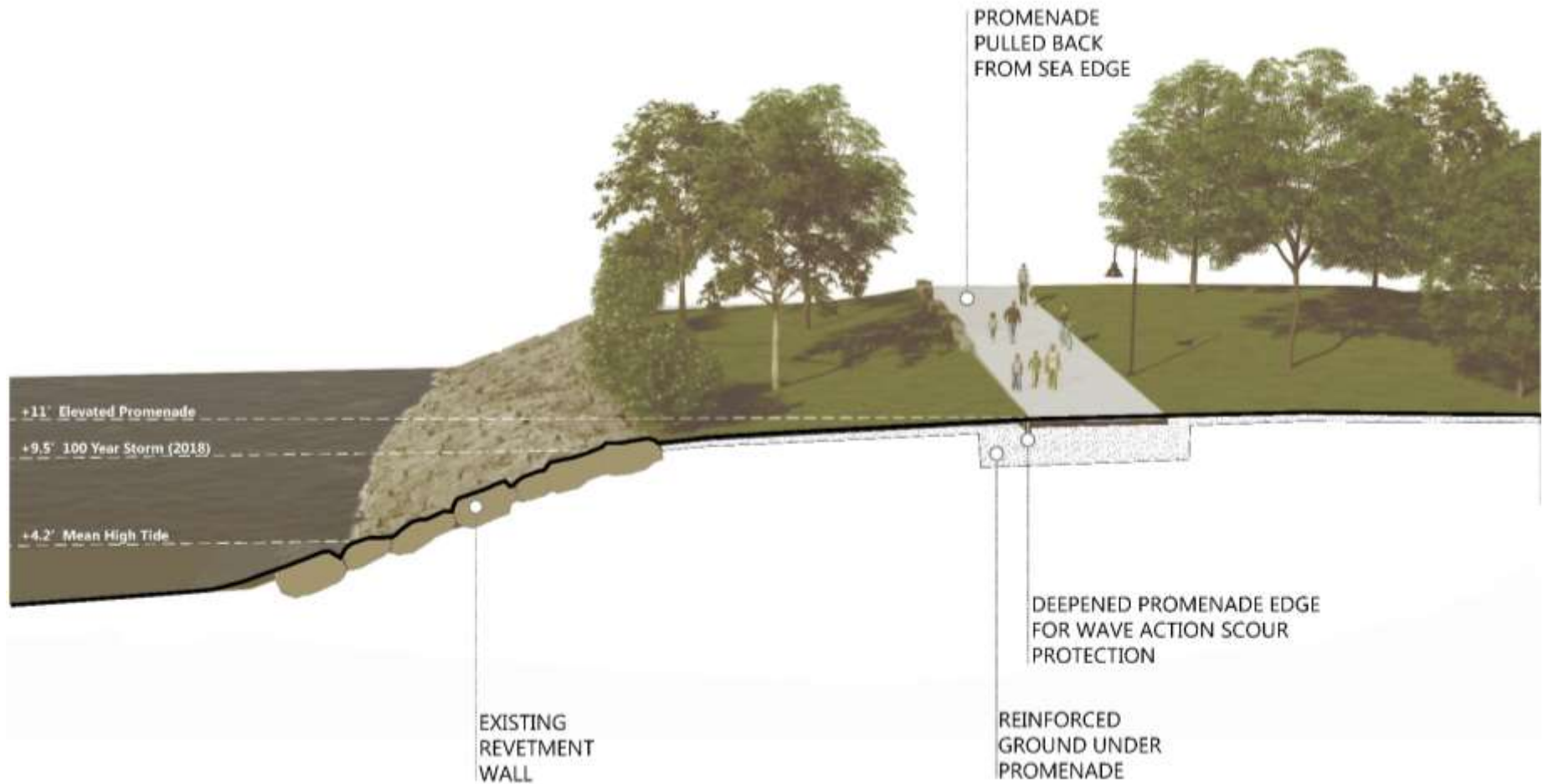
- Promenade compliant with Open Space Master Plan
- Saw cut concrete with a 15' – 30' width
- Uses Typical Promenade lights and furniture
- Paths have a flush 18" deep curb to protect from potential risk of scouring
- Designed to withstand inundation



Lynn Heritage State Park Renovations Promenade



Lynn Heritage State Park Renovations New Park Amenities



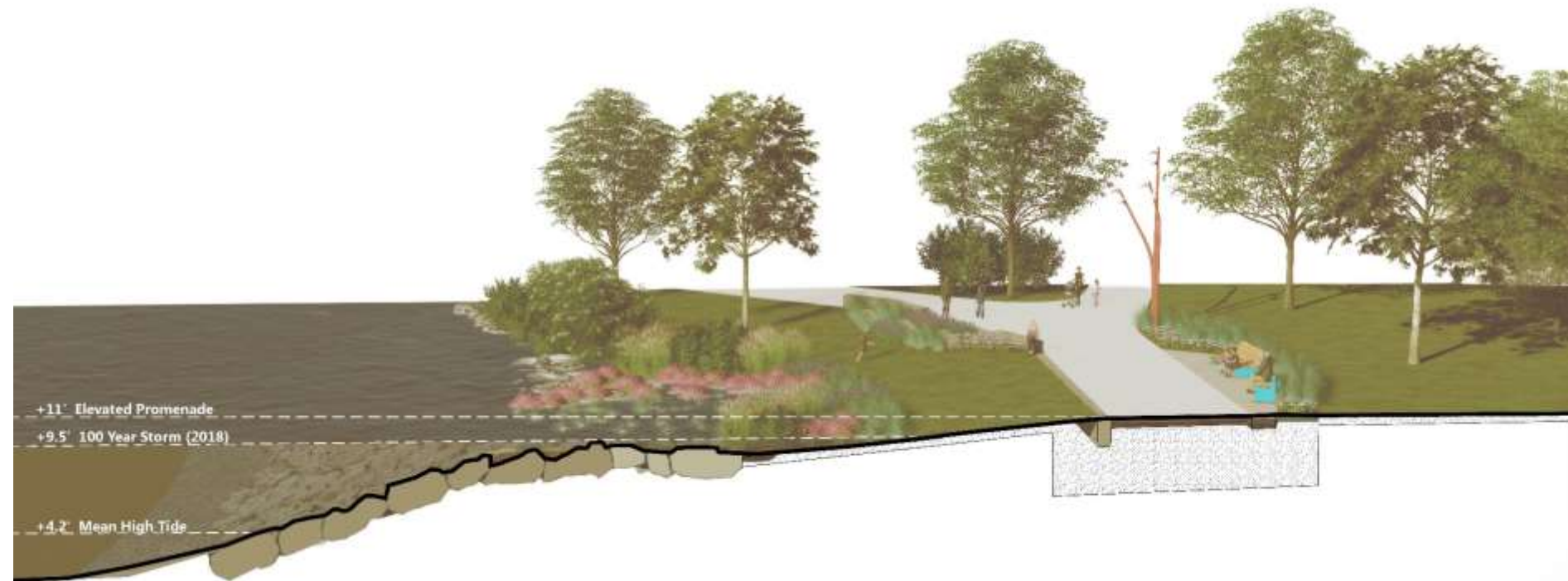
Lynn Heritage State Park Renovations Promenade



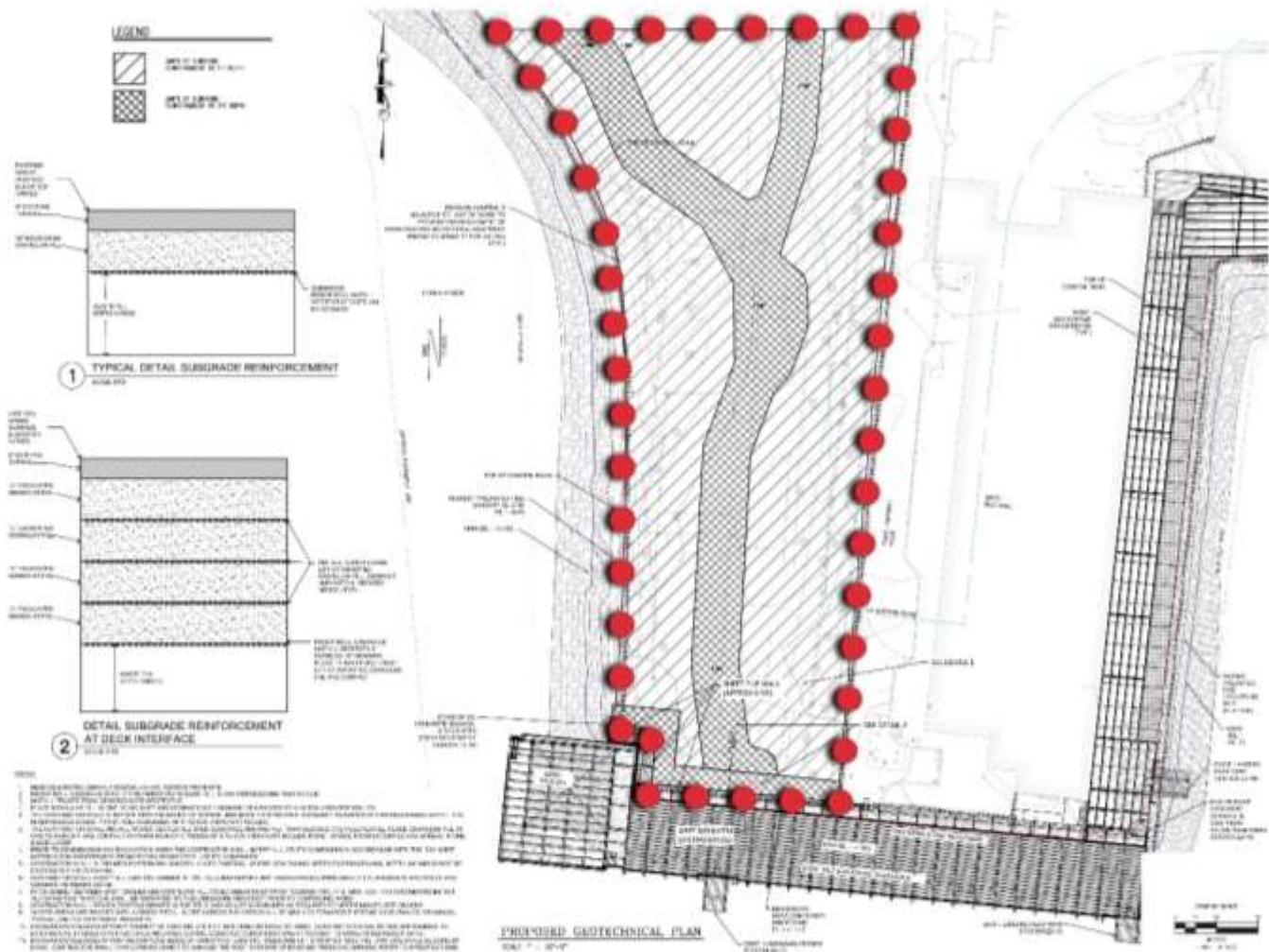
MASSACHUSETTS DEPARTMENT OF
CONSERVATION AND RECREATION



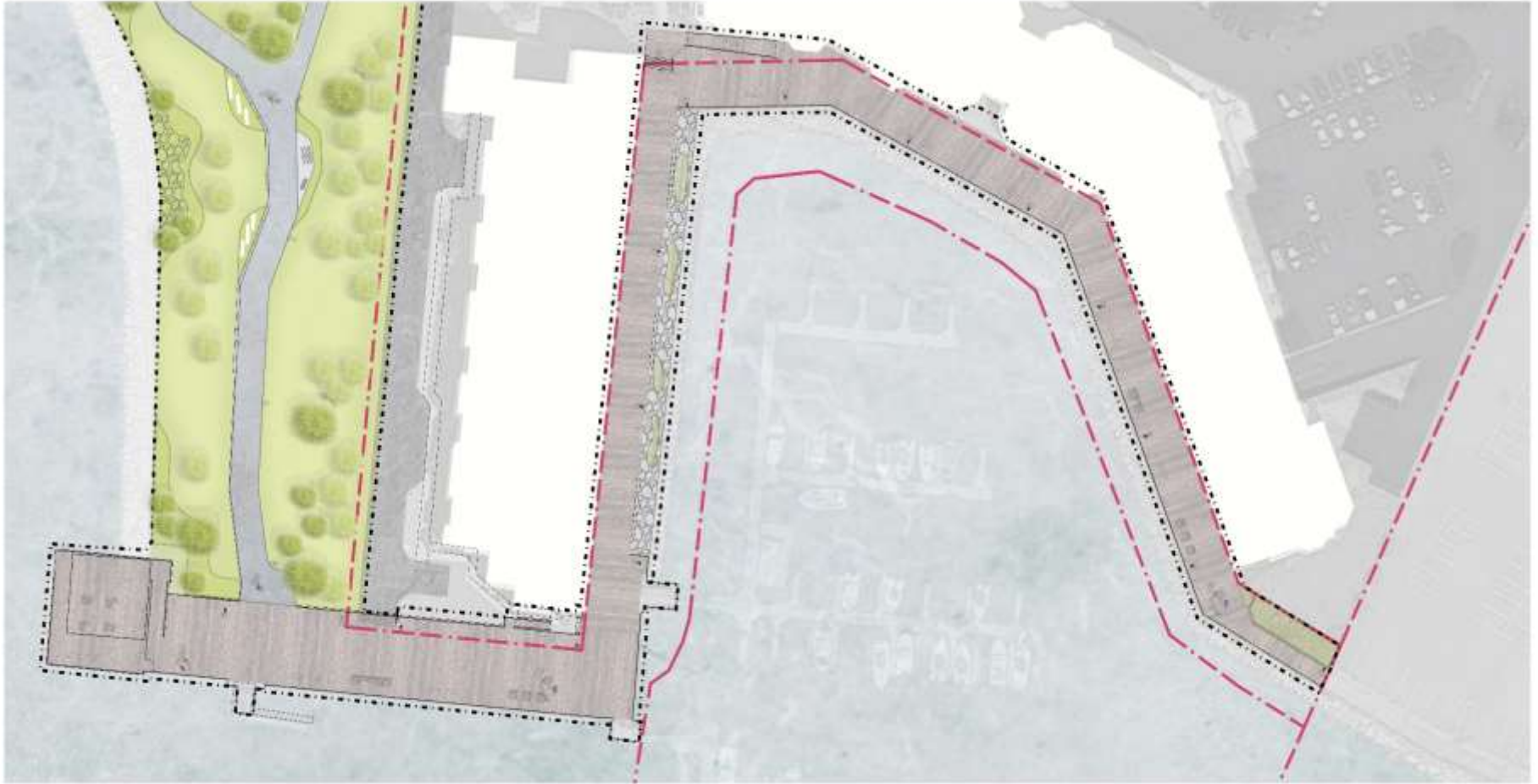
Lynn Heritage State Park Renovations Resiliency Approach



Lynn Heritage State Park Renovations Resiliency Approach



Lynn Heritage State Park Renovations Settlement Approach



Lynn Heritage State Park Renovations Boardwalk





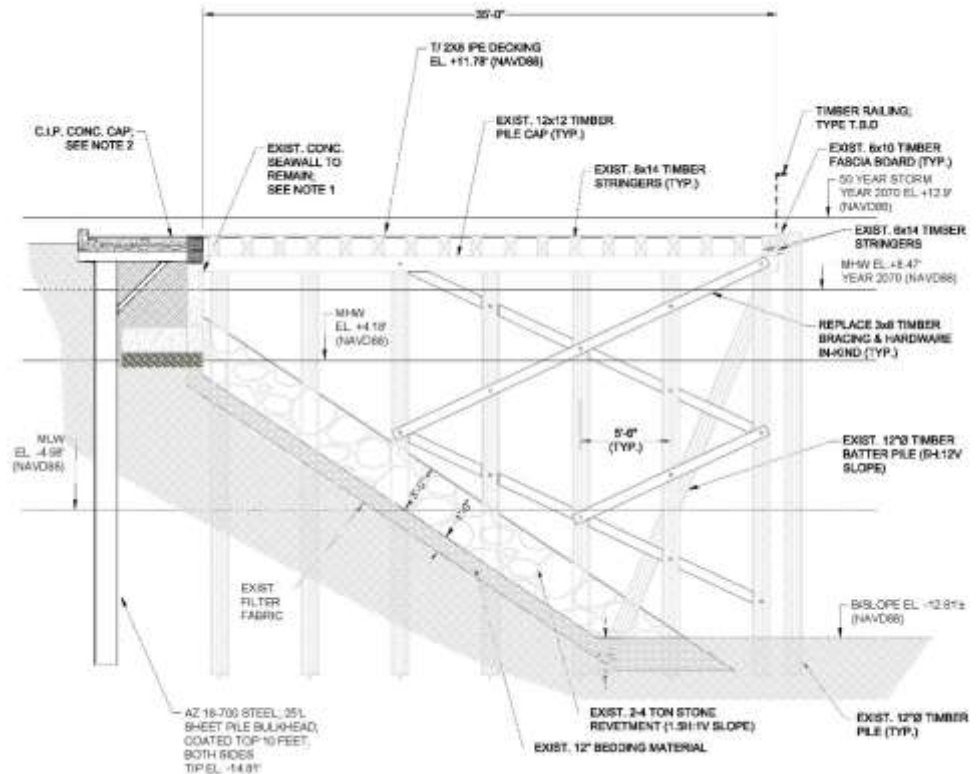
Lynn Heritage State Park Renovations Boardwalk Area 1

- Area 1 is the boardwalk on the south side of the first Condominium building.
- It extends from the marina entry, westwards to the pavilion structure.



Lynn Heritage State Park Renovations Boardwalk Area 1

- A steel sheet pile wall will be vibration driven behind the existing failed concrete wall and covered with a concrete cap.
- All of this work will eventually be hidden under the new boardwalk decking.
- A new handrail will also be provided.



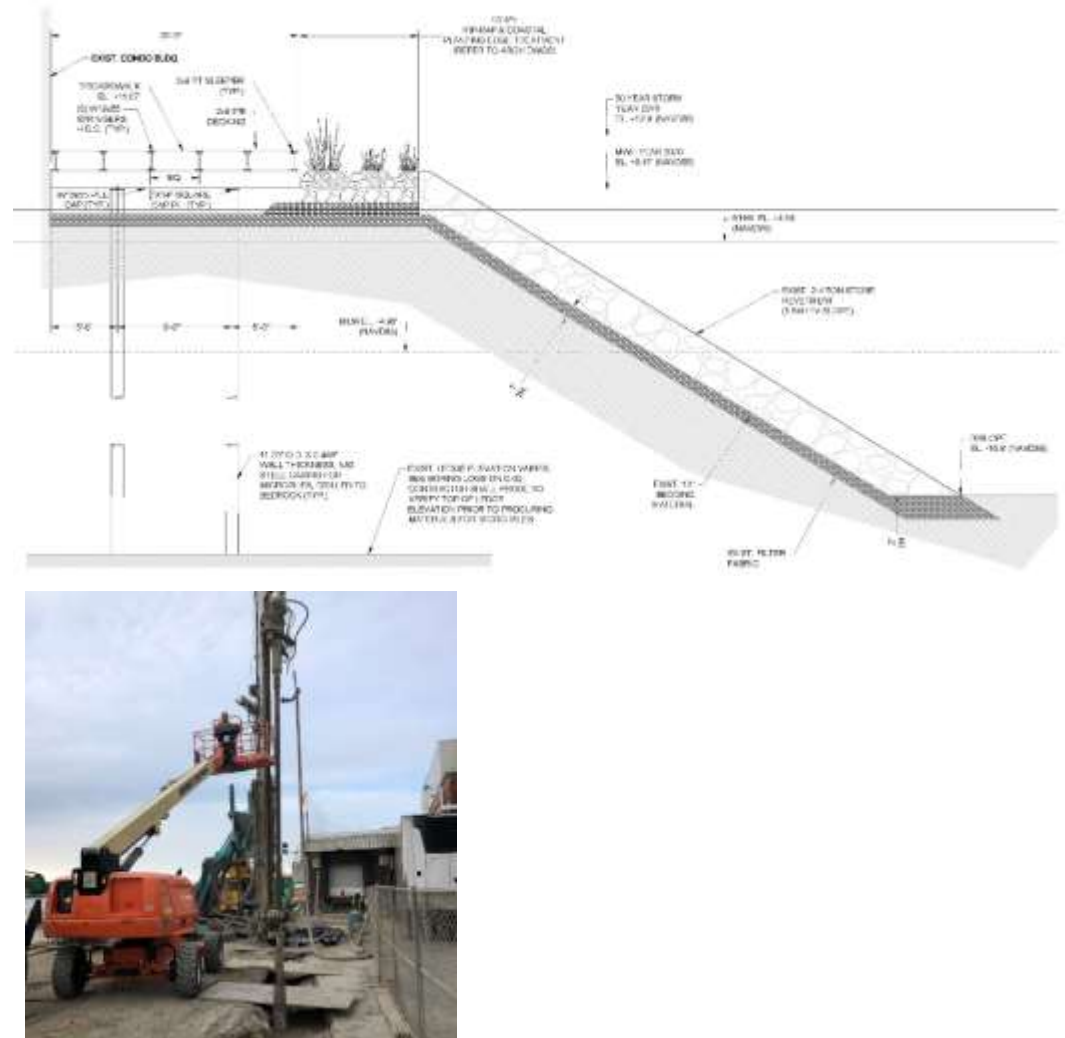
Lynn Heritage State Park Renovations Boardwalk Area 1

- Area 2 extends from the planted area between the two condominium buildings, southward to the Seaport Landing marina.



Lynn Heritage State Park Renovations Boardwalk Area 2

- This area of the boardwalk is experiencing the most dramatic settlement.
- The boardwalk width will be reduced from 30' to 20', and a new planted edge will be installed.
- The boardwalk in this area will be supported by machine-driven micro piles.



Lynn Heritage State Park Renovations

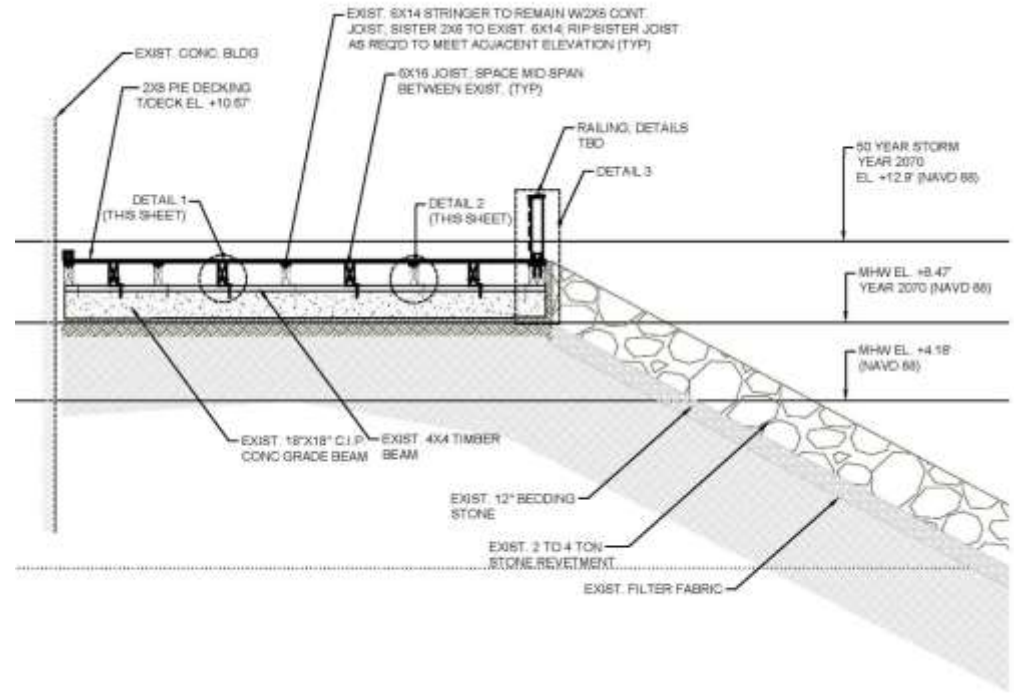
Boardwalk Area 2

- Area 3 + 4 extends for the entirety of the eastern condo building, up to the property line with the Porthole restaurant site.



Lynn Heritage State Park Renovations
Boardwalk Area 3 + 4

- This area of the boardwalk is not experiencing settlement.
- The surface decking will be replaced and additional decking supports will be installed.
- A new handrail along the harbor edge will also be provided.



Lynn Heritage State Park Renovations Boardwalk Area 3 + 4



Lynn Heritage State Park Renovations Timeline

Park Use During Construction

- DCR will notify the public regarding any site use limitations.
- It is likely that the whole park and boardwalk will be closed during the entirety of the construction work.

The intent is to provide access to the following during construction:

- Pedestrian Overpass.
- Harbor Master Room and Facilities.
- Seaport Landing Marina.
- Note: There may be periodic access limitations at agreed times.

Seaport Landing Condominiums

- A resident meeting will be held prior to construction to identify construction-related impacts and potential mitigation measures.
- Building access will not be restricted, except onto boardwalk.

Lynn Heritage State Park Renovations
Construction Impacts + Mitigation

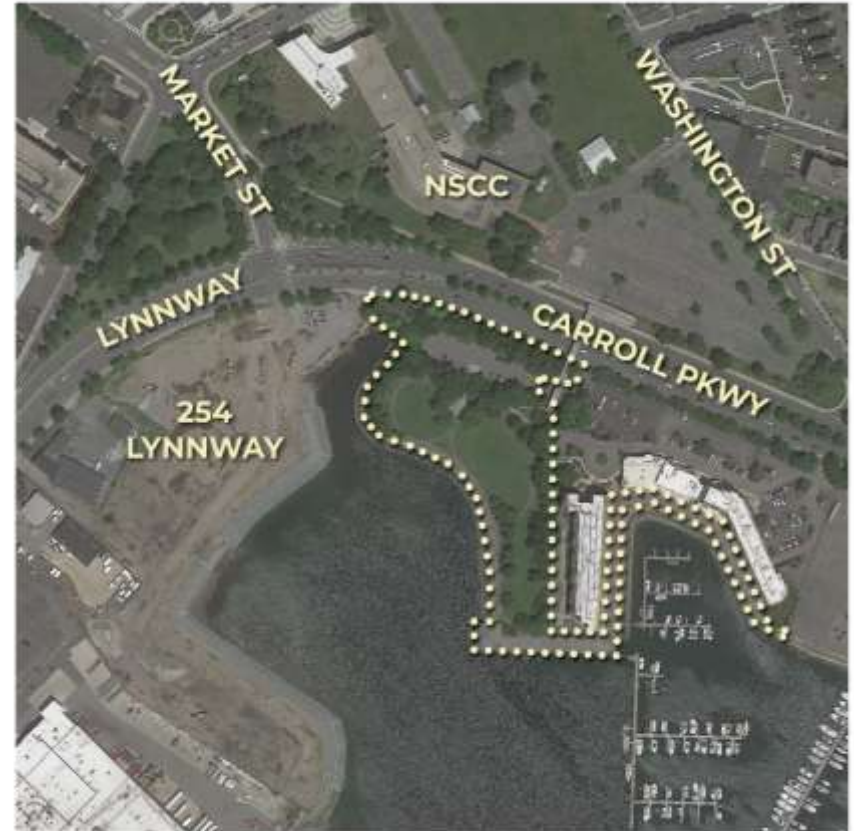
Willis Fishing Pier

- DCR is investing over \$600,000 to repair and upgrade the Fishing Pier.
- New decking, handrails, seating, and fish/bait cutting stations are proposed.
- The project is being fast-tracked in order to reopen the pier as soon as possible.

Lynn Heritage State Park

- Approximately \$9 million of improvements are proposed.
- These improvements include a new public promenade, plaza, splash pad, mown lawns, coastal planting, tree planting, renovated boardwalk, and improved site access.
- The park and boardwalk improvements will revitalize this great community asset.

Willis Fishing Pier + Lynn Heritage State Park Presentation Summary



Willis Fishing Pier + Lynn Heritage State Park
Q + A

Additional Information

For more information:

<https://www.mass.gov/dcr-public-meetings-information/events/past>

If you have questions or concerns or wish to subscribe to a DCR general information or project-related listserv: contact DCR's Office of Community Relations at 617-626-4973 or Mass.Parks@state.ma.us.