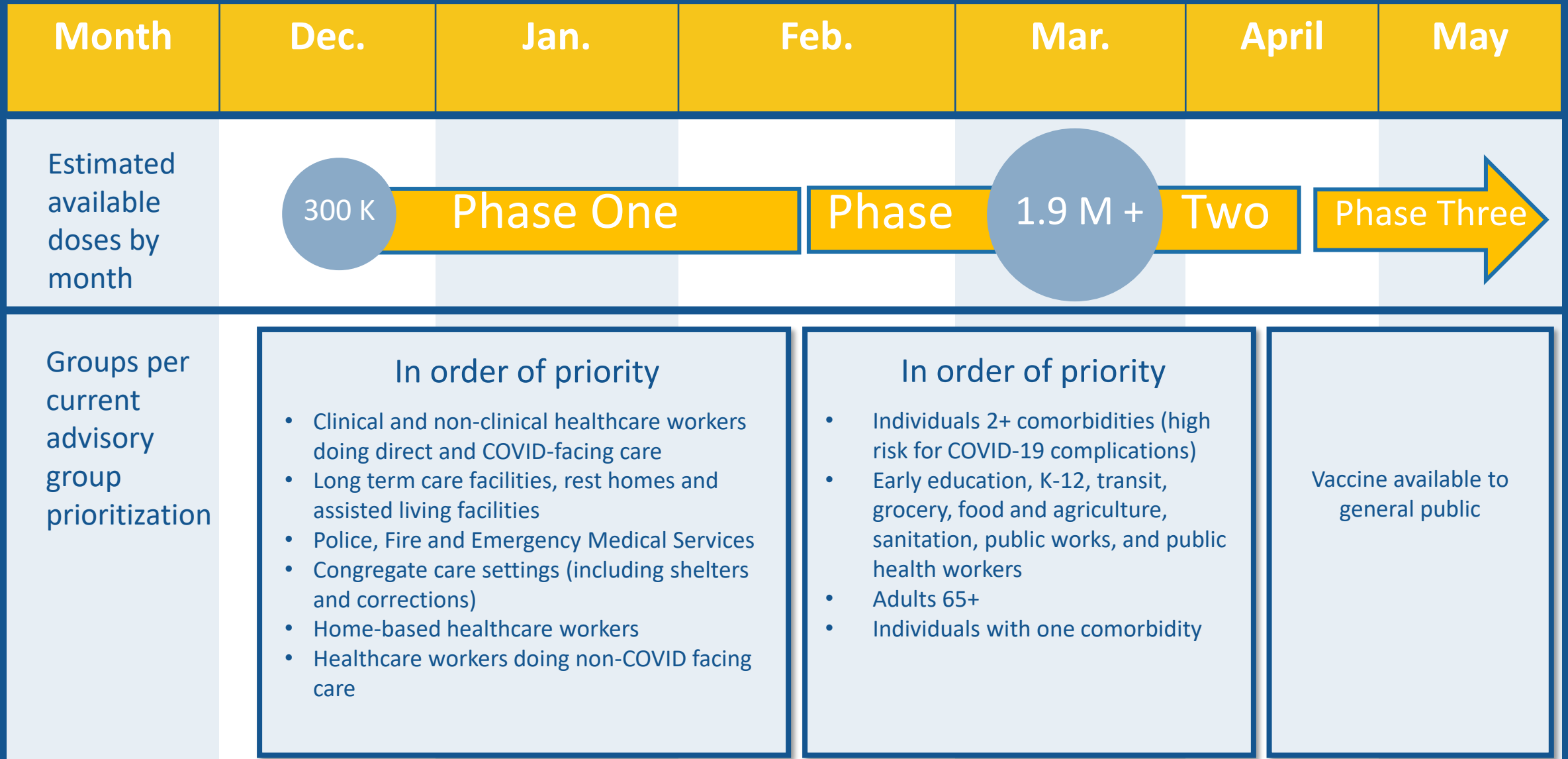


# COVID-19 Vaccine Presentation

Baker-Polito Administration  
December 9, 2020

# Estimated COVID-19 Vaccine Timeline



# When can I get a **COVID-19** vaccine in MA?



## PHASE ONE

In order of priority

- Clinical and non-clinical healthcare workers doing direct and COVID-facing care
- Long term care facilities, rest homes and assisted living facilities
- Police, Fire and Emergency Medical Services
- Congregate care settings (including corrections and shelters)
- Home-based healthcare workers
- Healthcare workers doing non-COVID-facing care



## PHASE TWO

In order of priority

- Individuals with 2+ comorbidities (high risk for COVID-19 complications)
- Early education, K-12, transit, grocery, utility, food and agriculture, sanitation, public works and public health workers
- Adults 65+
- Individuals with one comorbidity



## PHASE THREE

Vaccine available to general public

**December - February**

Estimated timeframes

**February - April**

**April - June**

For more information on vaccine distribution visit [Mass.gov/COVIDvaccine](https://www.mass.gov/COVIDvaccine)



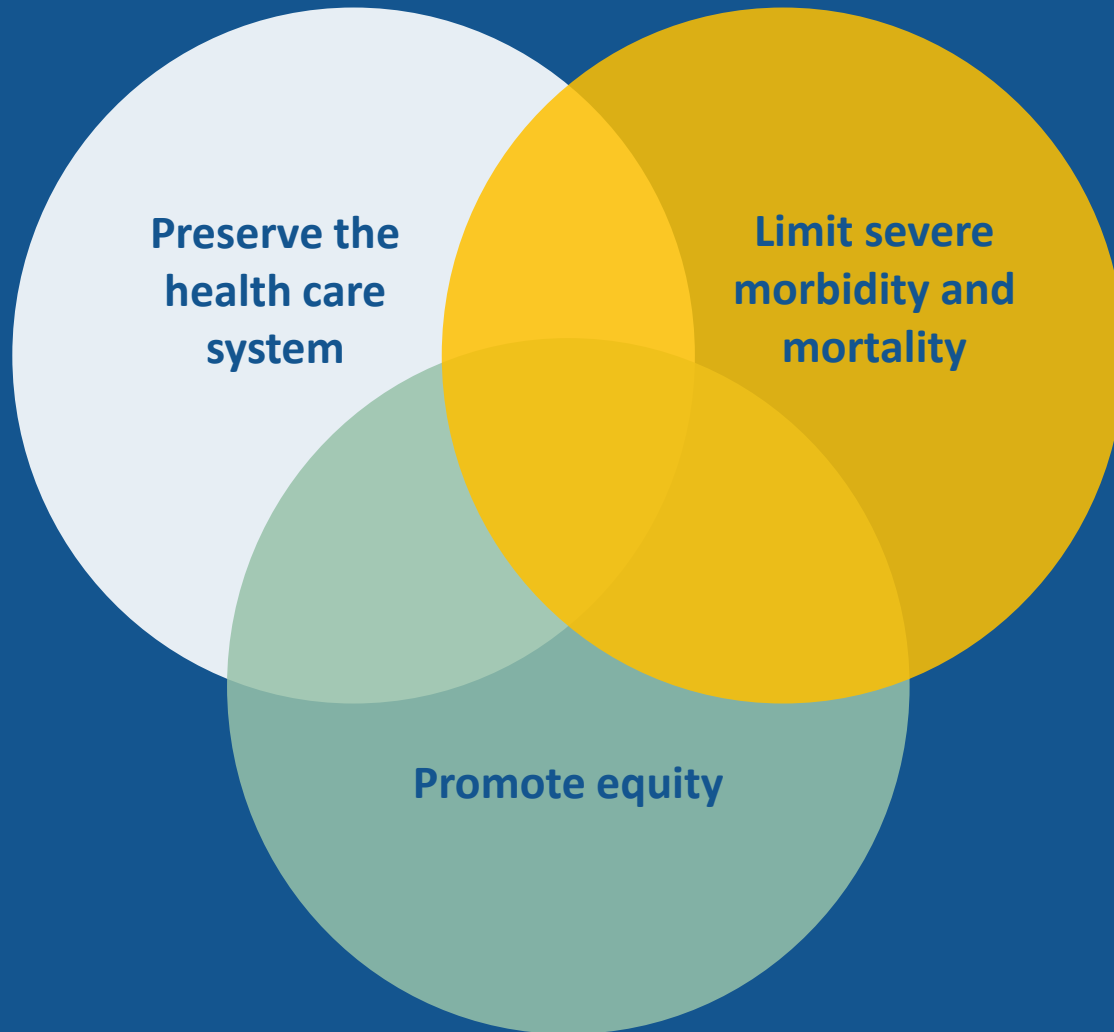
# COVID-19 Vaccine Safety



- Vaccine will not be distributed in Massachusetts until the FDA determines the vaccine is safe
- Vaccines go through more testing than any other pharmaceuticals, including extensive testing in clinical trials
- The FDA and the CDC's Advisory Committee on Immunization Practices (ACIP) ensure any vaccine is both safe and effective
- Infectious disease leads in Massachusetts' academic medical centers plan to review the EUA data and provide an independent opinion about their safety and efficacy
- COVID-19 Vaccination Provider Agreement requires reporting moderate and severe adverse event to the Vaccine Adverse Event Reporting System (VAERS)



# Equitable Distribution of **COVID-19** Vaccine



The Advisory Group took a strong stance on equity:

- Prioritizes all COVID-facing individuals in healthcare settings, including food service and environmental (not just doctors and nurses) as well as home health workers
- 20% additional vaccine allocated to communities that have experienced disproportionate COVID burden and high social vulnerability



# More Information

View the COVID-19 vaccine plan,  
FAQs and more at:

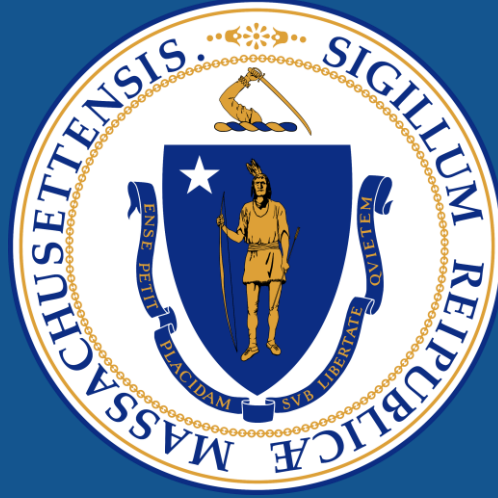
[mass.gov/covidvaccine](https://mass.gov/covidvaccine)



# Massachusetts COVID-19 Advisory Group

- Dr. Paul Biddinger, Chair - Mass General Brigham
- State Senator Cindy Friedman - Chairperson of the Joint Committee on Health Care Financing
- State Representative Ronald Mariano – House Majority Leader
- Mayor Daniel Rivera - City of Lawrence
- Dr. Vincent Chiang - Boston Children’s Hospital
- Dr. Robert Finberg - University of Massachusetts Medical School
- Dr. Simone Wildes - South Shore Hospital
- Dr. Sharon Wright - Beth Israel Lahey Health
- Dr. Asif Merchant - Mass Medical Society
- Dr. Barry Bloom - Harvard T.H. Chan School of Public Health
- Dr. Marc Lipsitch - Harvard T.H. Chan School of Public Health
- Dr. John Rocchio - CVS Health
- Dr. David Twitchell - Boston Medical Center
- Michael Curry, Esq. - Massachusetts League of Community Health Centers
- Rev. Liz Walker - Roxbury Presbyterian Church
- Wanda McClain - Brigham and Women’s Hospital
- Phoebe Walker - Franklin Regional Council of Governments





# COVID-19 Vaccine Presentation

Baker-Polito Administration  
December 9, 2020