

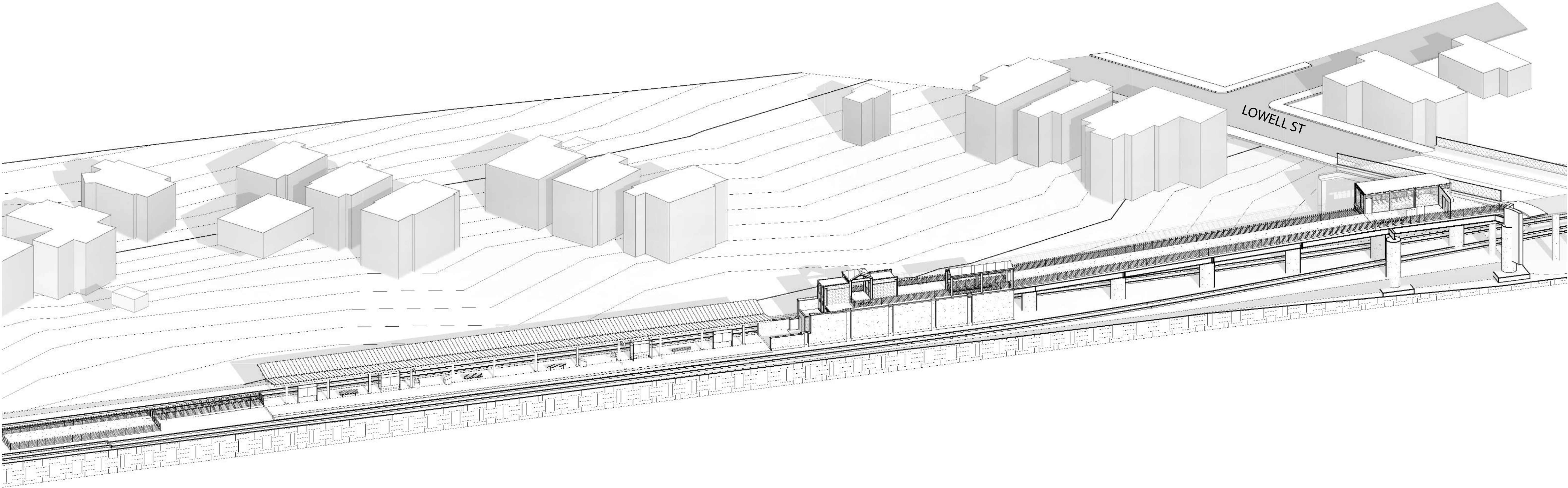
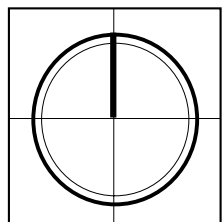
• **Design: 44% complete (as of Dec. 2018)**

- Elevated walkway from Lowell Street to station headhouse
- Station entrances features two fare vending machines.
- Additive canopy over station platform
- Two Customer Assistance Areas on the station platform, featuring an emergency call box. Additional call box located at the Areas of Rescue Assistance in the headhouse.
- Improved neighborhood mobility with new transportation option
- Sidewalks widths range from 6 to 10+ feet
- Connection to existing Community Path via Lowell Street bridge
- Staion close to numerous apartments and condominiums. Albion Playground and the new City of Somerville Hoyt Sullivan Playground is just a block away.

Number of Benches	Bike Storage Covered	Bike Storage Uncovered	Width/Length of Platform	Three Sided Shelter	Pick-up/Drop-off
5	36	16	22.5'x225'		

AXONOMETRIC

DRAFT - FOR DISCUSSION ONLY



MAXWELL'S
GREEN

