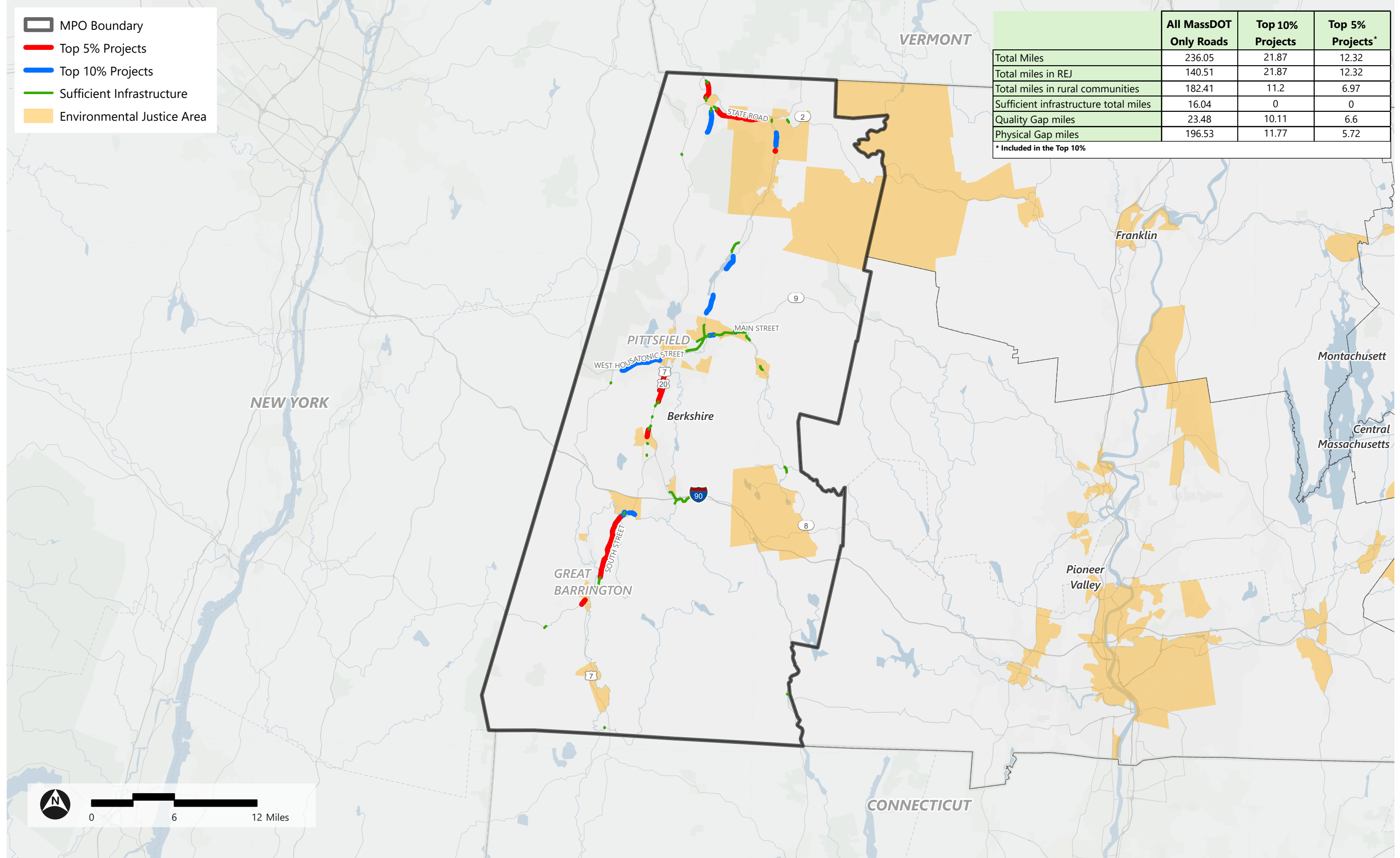


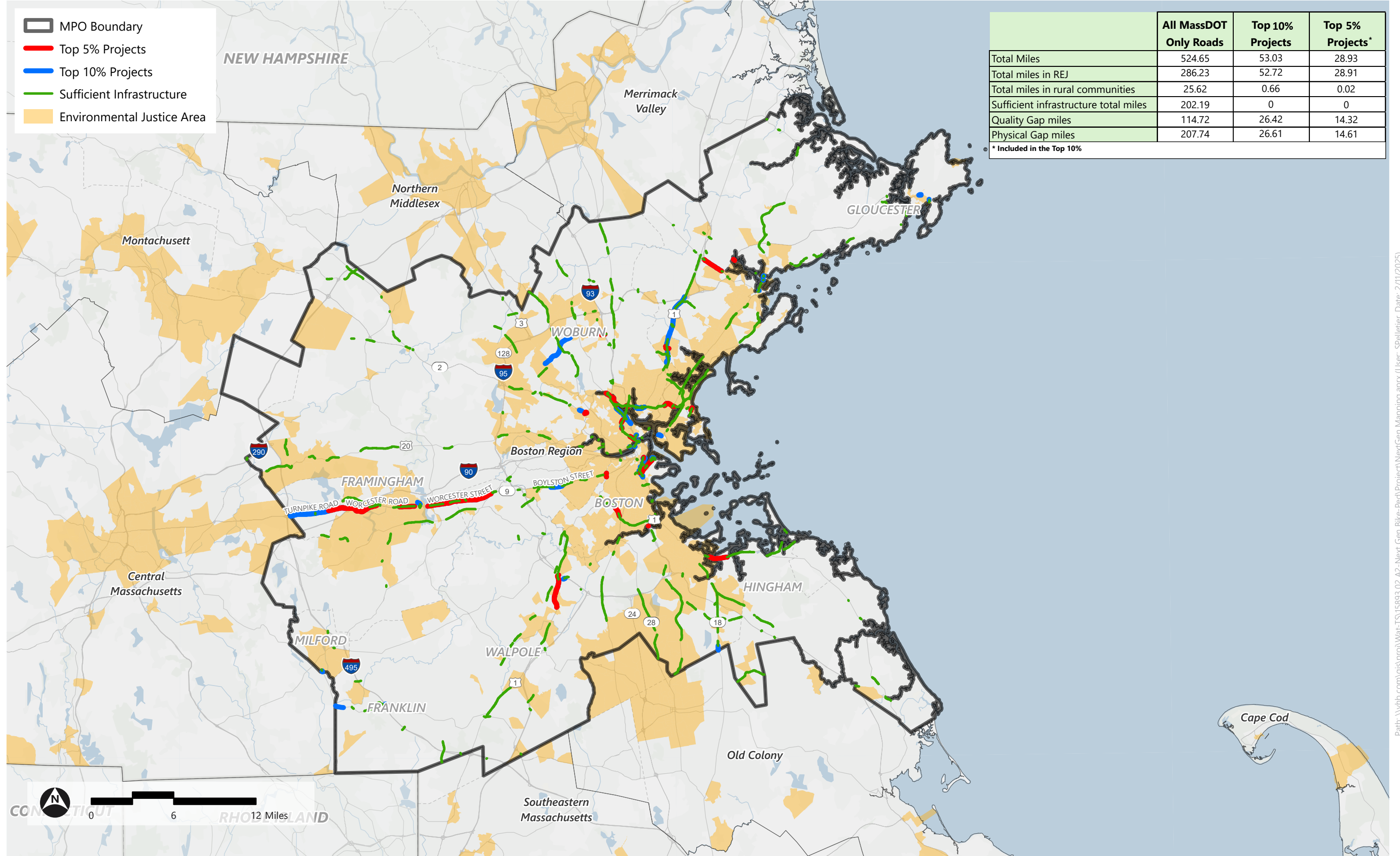
Prioritized Pedestrian Project Locations - MassDOT Roads - Berkshire MPO

MassDOT Next Gen Bike-Ped Vision Map



Prioritized Pedestrian Project Locations - MassDOT Roads - Boston Region MPO

MassDOT Next Gen Bike-Ped Vision Map



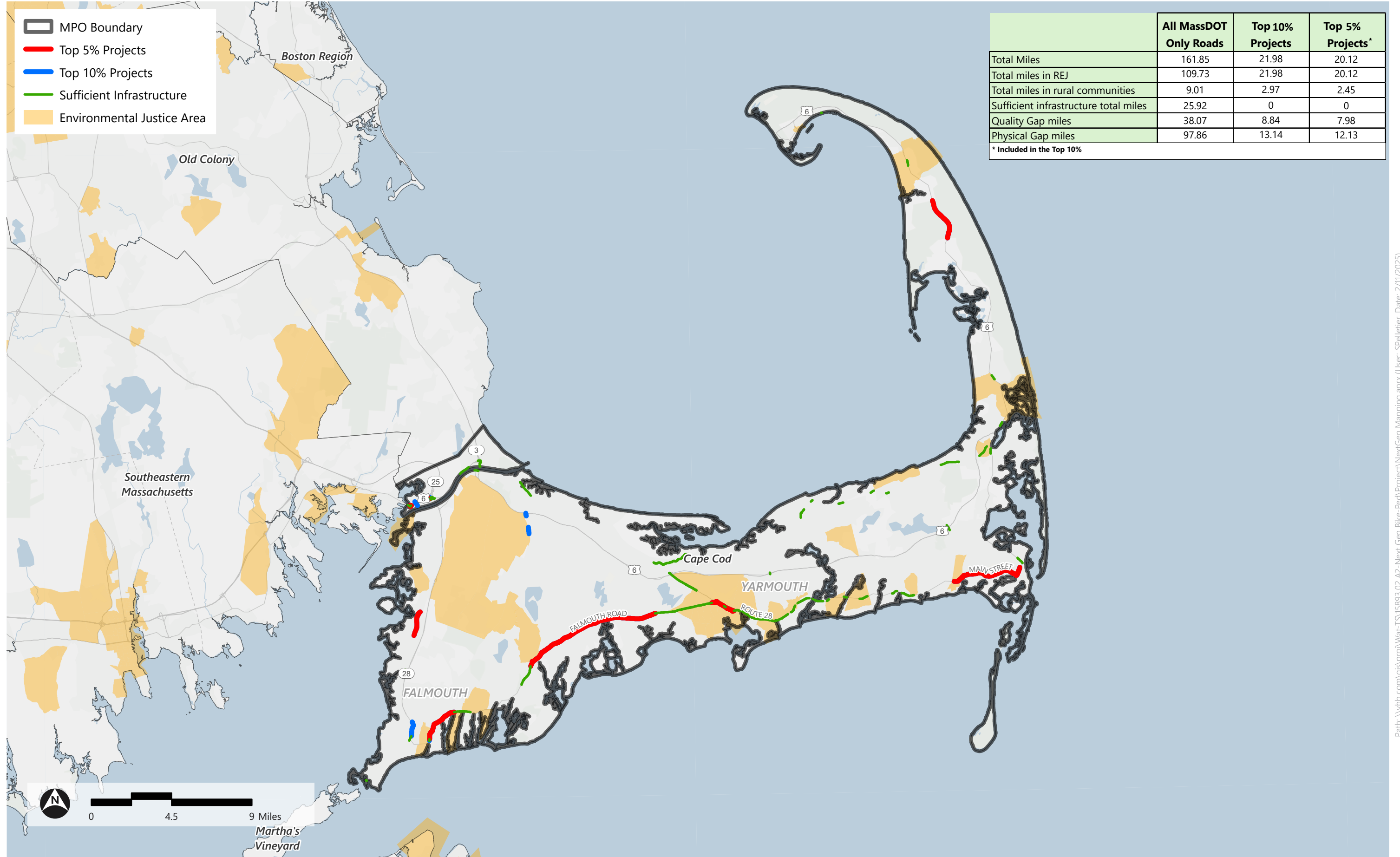
	All MassDOT Only Roads	Top 10% Projects	Top 5% Projects*
Total Miles	524.65	53.03	28.93
Total miles in REJ	286.23	52.72	28.91
Total miles in rural communities	25.62	0.66	0.02
Sufficient infrastructure total miles	202.19	0	0
Quality Gap miles	114.72	26.42	14.32
Physical Gap miles	207.74	26.61	14.61

* Included in the Top 10%



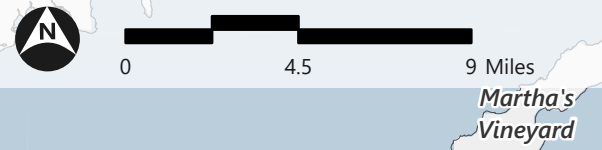
Prioritized Pedestrian Project Locations - MassDOT Roads - Cape Cod MPO

MassDOT Next Gen Bike-Ped Vision Map



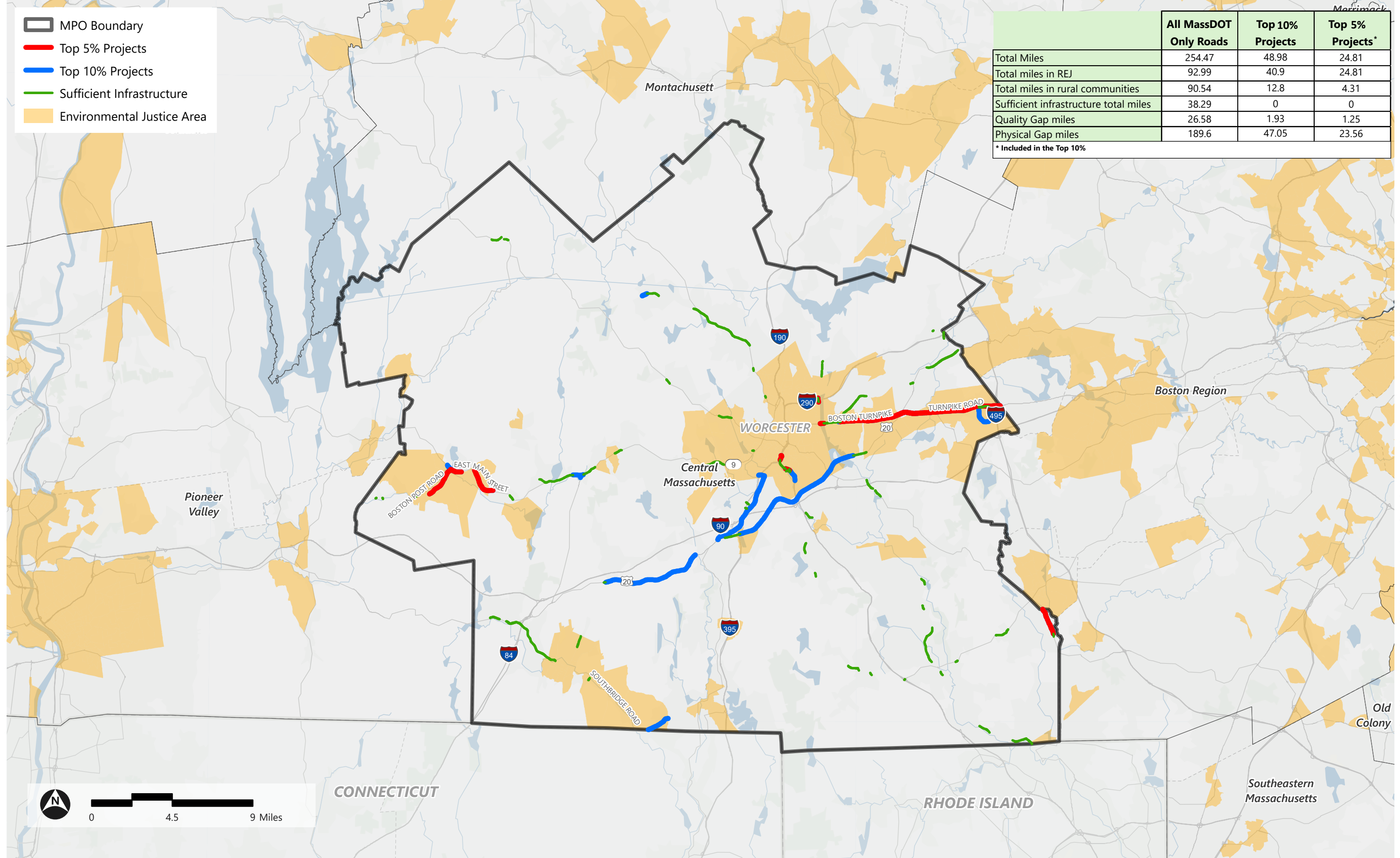
	All MassDOT Only Roads	Top 10% Projects	Top 5% Projects*
Total Miles	161.85	21.98	20.12
Total miles in REJ	109.73	21.98	20.12
Total miles in rural communities	9.01	2.97	2.45
Sufficient infrastructure total miles	25.92	0	0
Quality Gap miles	38.07	8.84	7.98
Physical Gap miles	97.86	13.14	12.13

* Included in the Top 10%



Prioritized Pedestrian Project Locations - MassDOT Roads - Central Massachusetts MPO

MassDOT Next Gen Bike-Ped Vision Map



	All MassDOT Only Roads	Top 10% Projects	Top 5% Projects*
Total Miles	254.47	48.98	24.81
Total miles in REJ	92.99	40.9	24.81
Total miles in rural communities	90.54	12.8	4.31
Sufficient infrastructure total miles	38.29	0	0
Quality Gap miles	26.58	1.93	1.25
Physical Gap miles	189.6	47.05	23.56

* Included in the Top 10%

Prioritized Pedestrian Project Locations - MassDOT Roads - Franklin MPO

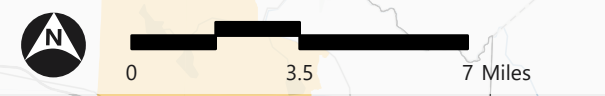
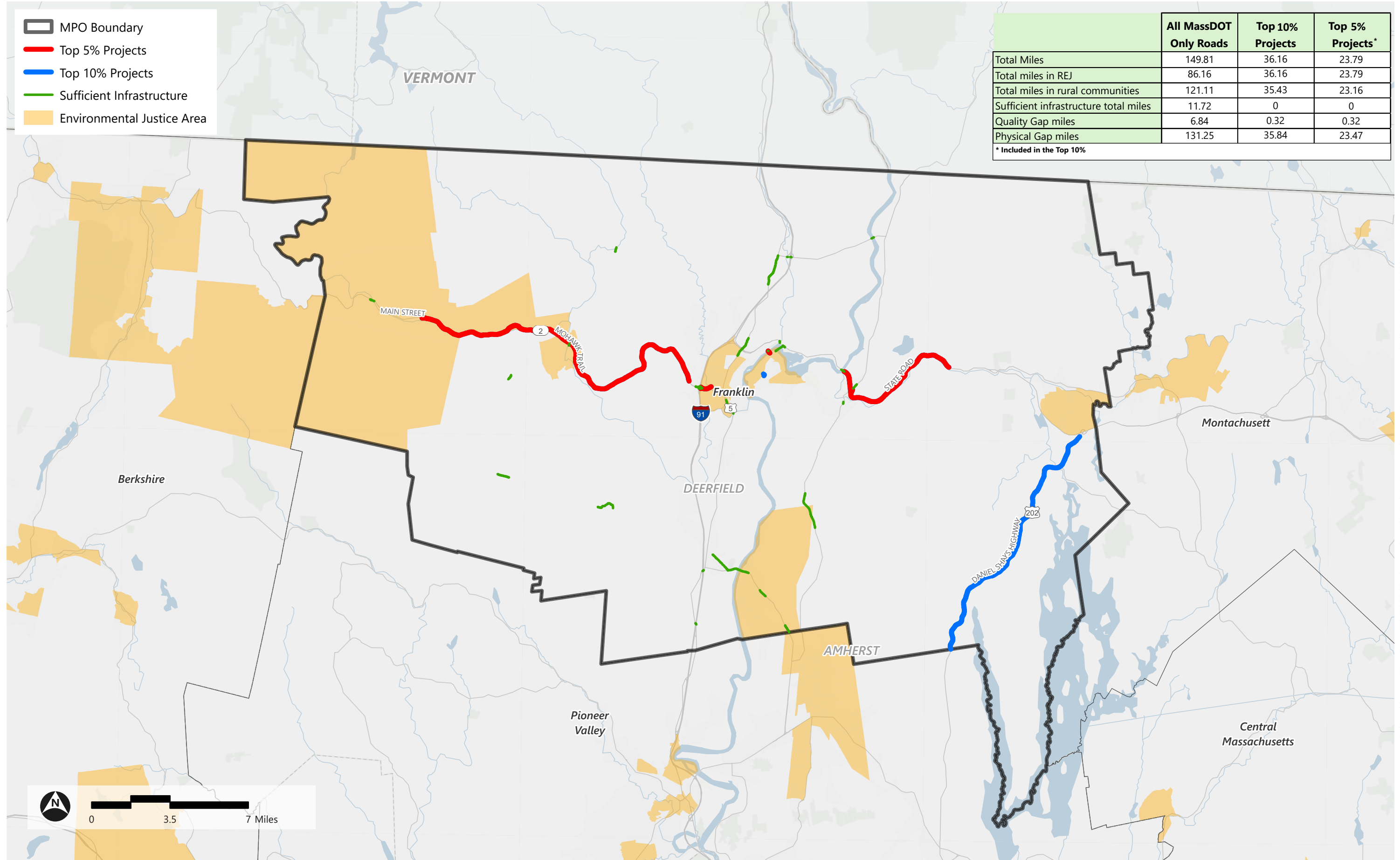
MassDOT Next Gen Bike-Ped Vision Map



- MPO Boundary
- Top 5% Projects
- Top 10% Projects
- Sufficient Infrastructure
- Environmental Justice Area

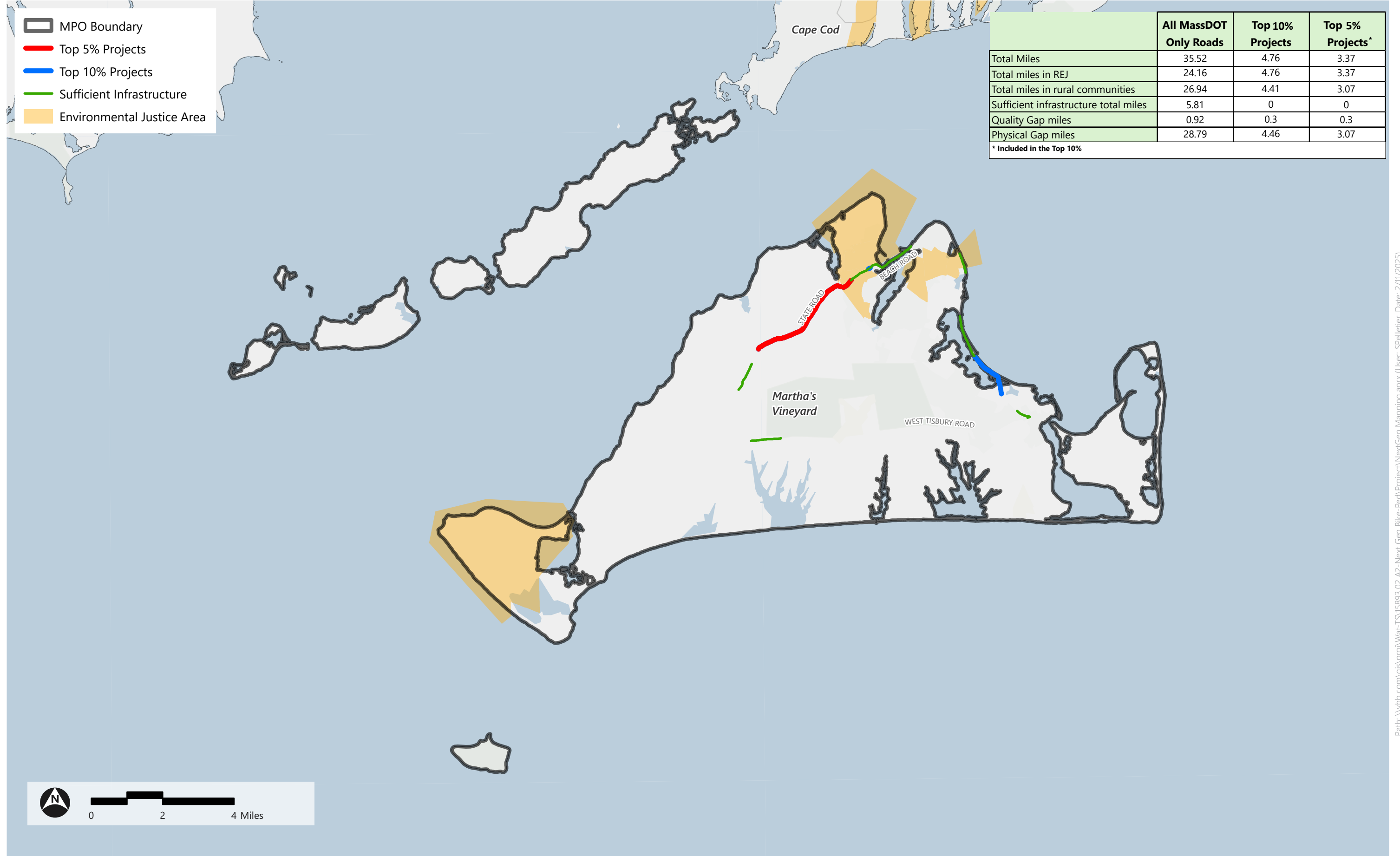
	All MassDOT Only Roads	Top 10% Projects	Top 5% Projects*
Total Miles	149.81	36.16	23.79
Total miles in REJ	86.16	36.16	23.79
Total miles in rural communities	121.11	35.43	23.16
Sufficient infrastructure total miles	11.72	0	0
Quality Gap miles	6.84	0.32	0.32
Physical Gap miles	131.25	35.84	23.47

* Included in the Top 10%



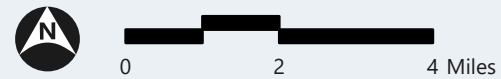
Prioritized Pedestrian Project Locations - MassDOT Roads - Martha's Vineyard MPO

MassDOT Next Gen Bike-Ped Vision Map



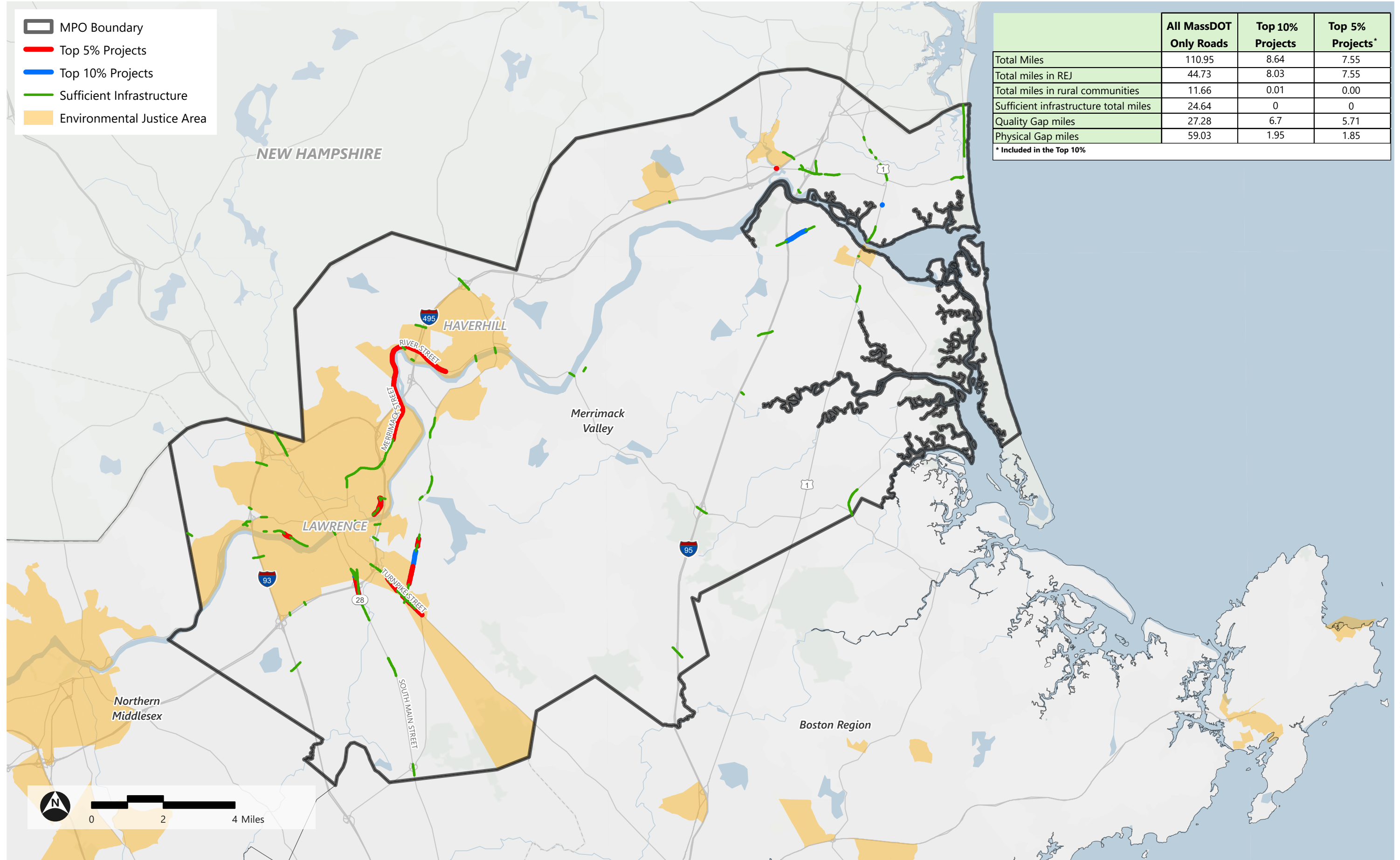
	All MassDOT Only Roads	Top 10% Projects	Top 5% Projects*
Total Miles	35.52	4.76	3.37
Total miles in REJ	24.16	4.76	3.37
Total miles in rural communities	26.94	4.41	3.07
Sufficient infrastructure total miles	5.81	0	0
Quality Gap miles	0.92	0.3	0.3
Physical Gap miles	28.79	4.46	3.07

* Included in the Top 10%



Prioritized Pedestrian Project Locations - MassDOT Roads - Merrimack Valley MPO

MassDOT Next Gen Bike-Ped Vision Map



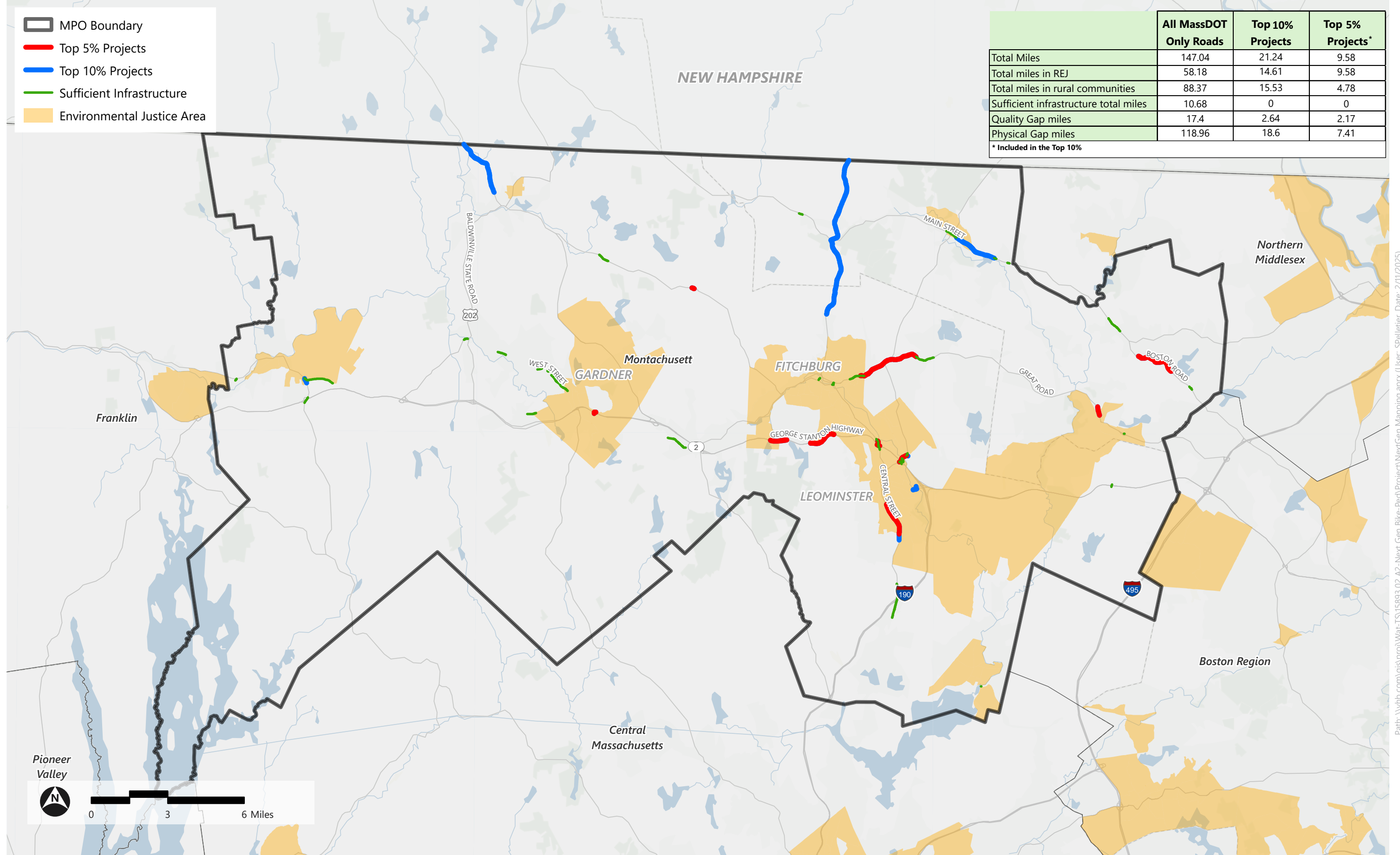
- MPO Boundary
- Top 5% Projects
- Top 10% Projects
- Sufficient Infrastructure
- Environmental Justice Area

	All MassDOT Only Roads	Top 10% Projects	Top 5% Projects*
Total Miles	110.95	8.64	7.55
Total miles in REJ	44.73	8.03	7.55
Total miles in rural communities	11.66	0.01	0.00
Sufficient infrastructure total miles	24.64	0	0
Quality Gap miles	27.28	6.7	5.71
Physical Gap miles	59.03	1.95	1.85

* Included in the Top 10%

Prioritized Pedestrian Project Locations - MassDOT Roads - Montachusett MPO

MassDOT Next Gen Bike-Ped Vision Map



- MPO Boundary
- Top 5% Projects
- Top 10% Projects
- Sufficient Infrastructure
- Environmental Justice Area

	All MassDOT Only Roads	Top 10% Projects	Top 5% Projects*
Total Miles	147.04	21.24	9.58
Total miles in REJ	58.18	14.61	9.58
Total miles in rural communities	88.37	15.53	4.78
Sufficient infrastructure total miles	10.68	0	0
Quality Gap miles	17.4	2.64	2.17
Physical Gap miles	118.96	18.6	7.41

* Included in the Top 10%

Pioneer Valley

Path: \\vhb.com\gis\proj\Wat-TS\15893.02 A2-Next Gen Bike-Ped\Project\NextGen Mapping.aprx (User: SPelletier, Date: 2/11/2025)

Prioritized Pedestrian Project Locations - MassDOT Roads - Nantucket MPO

MassDOT Next Gen Bike-Ped Vision Map



- MPO Boundary
- Top 5% Projects
- Top 10% Projects
- Sufficient Infrastructure
- Environmental Justice Area

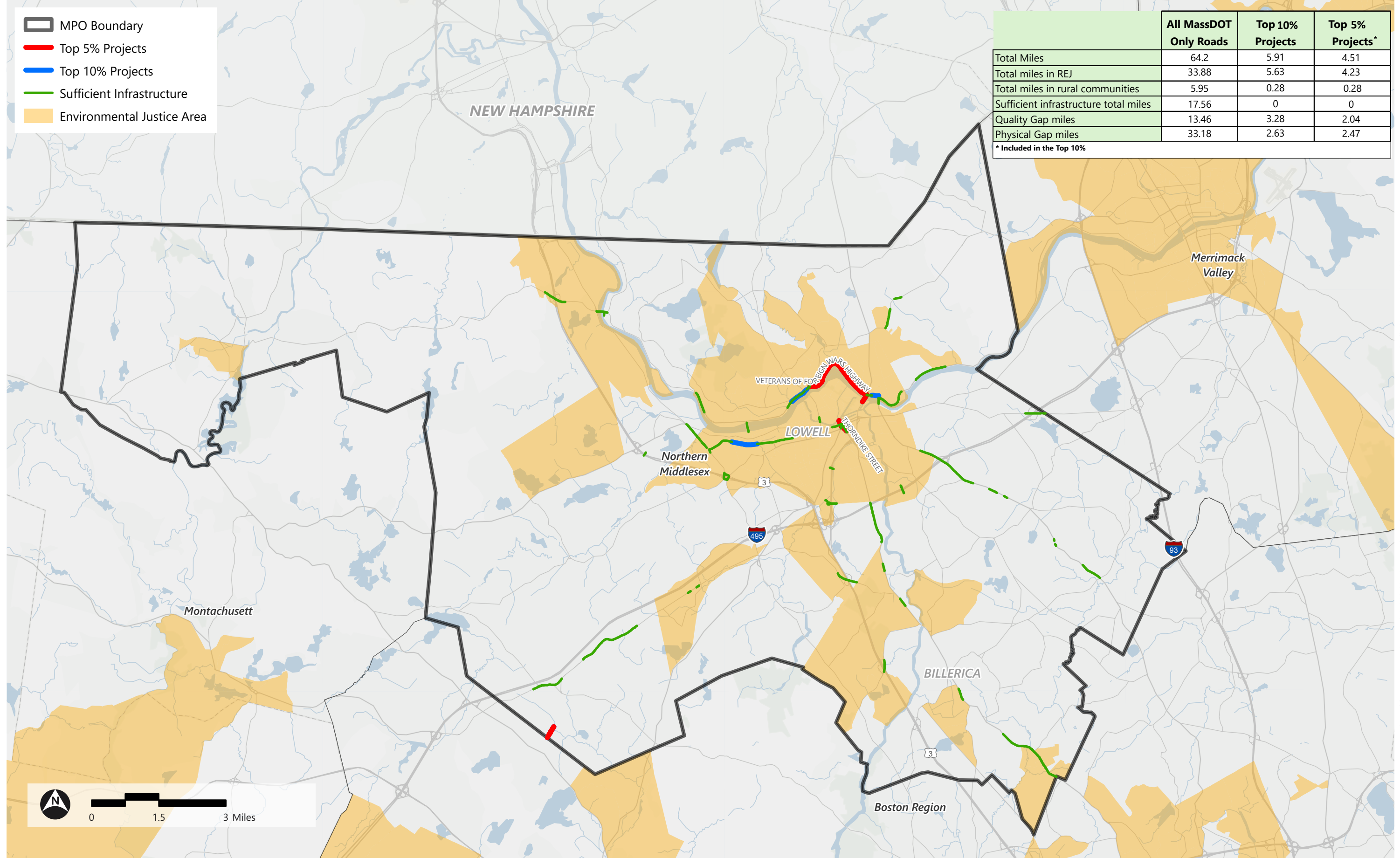
	All MassDOT Only Roads	Top 10% Projects	Top 5% Projects*
Total Miles	6.49	0.45	0.45
Total miles in REJ	3.86	0	0
Total miles in rural communities	4.25	0.45	0.45
Sufficient infrastructure total miles	4.98	0	0
Quality Gap miles	0	0	0
Physical Gap miles	1.51	0.45	0.45

* Included in the Top 10%



Prioritized Pedestrian Project Locations - MassDOT Roads - Northern Middlesex MPO

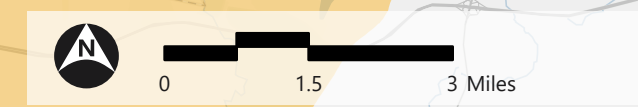
MassDOT Next Gen Bike-Ped Vision Map



- MPO Boundary
- Top 5% Projects
- Top 10% Projects
- Sufficient Infrastructure
- Environmental Justice Area

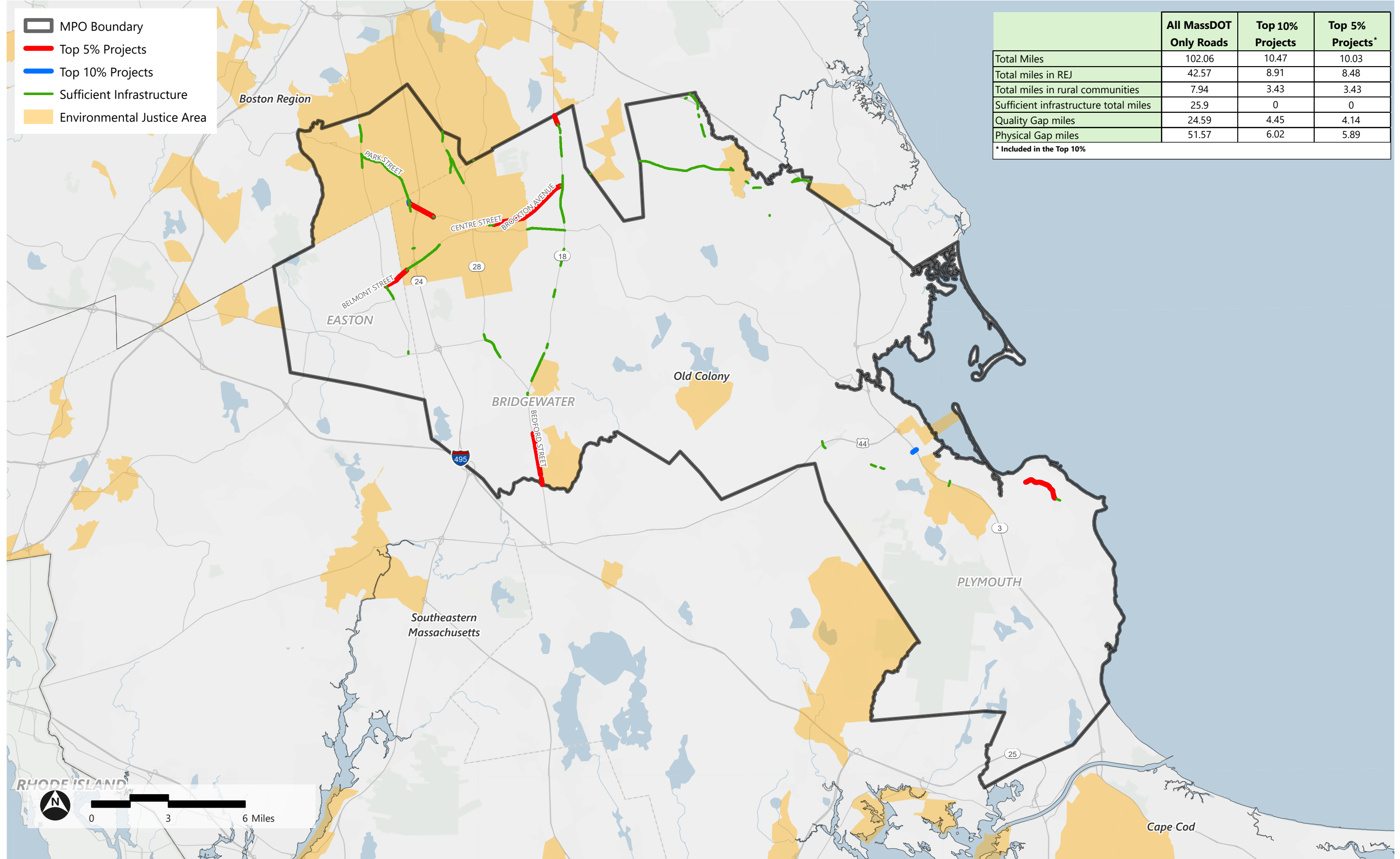
	All MassDOT Only Roads	Top 10% Projects	Top 5% Projects*
Total Miles	64.2	5.91	4.51
Total miles in REJ	33.88	5.63	4.23
Total miles in rural communities	5.95	0.28	0.28
Sufficient infrastructure total miles	17.56	0	0
Quality Gap miles	13.46	3.28	2.04
Physical Gap miles	33.18	2.63	2.47

* Included in the Top 10%



Prioritized Pedestrian Project Locations - MassDOT Roads - Old Colony MPO

MassDOT Next Gen Bike-Ped Vision Map

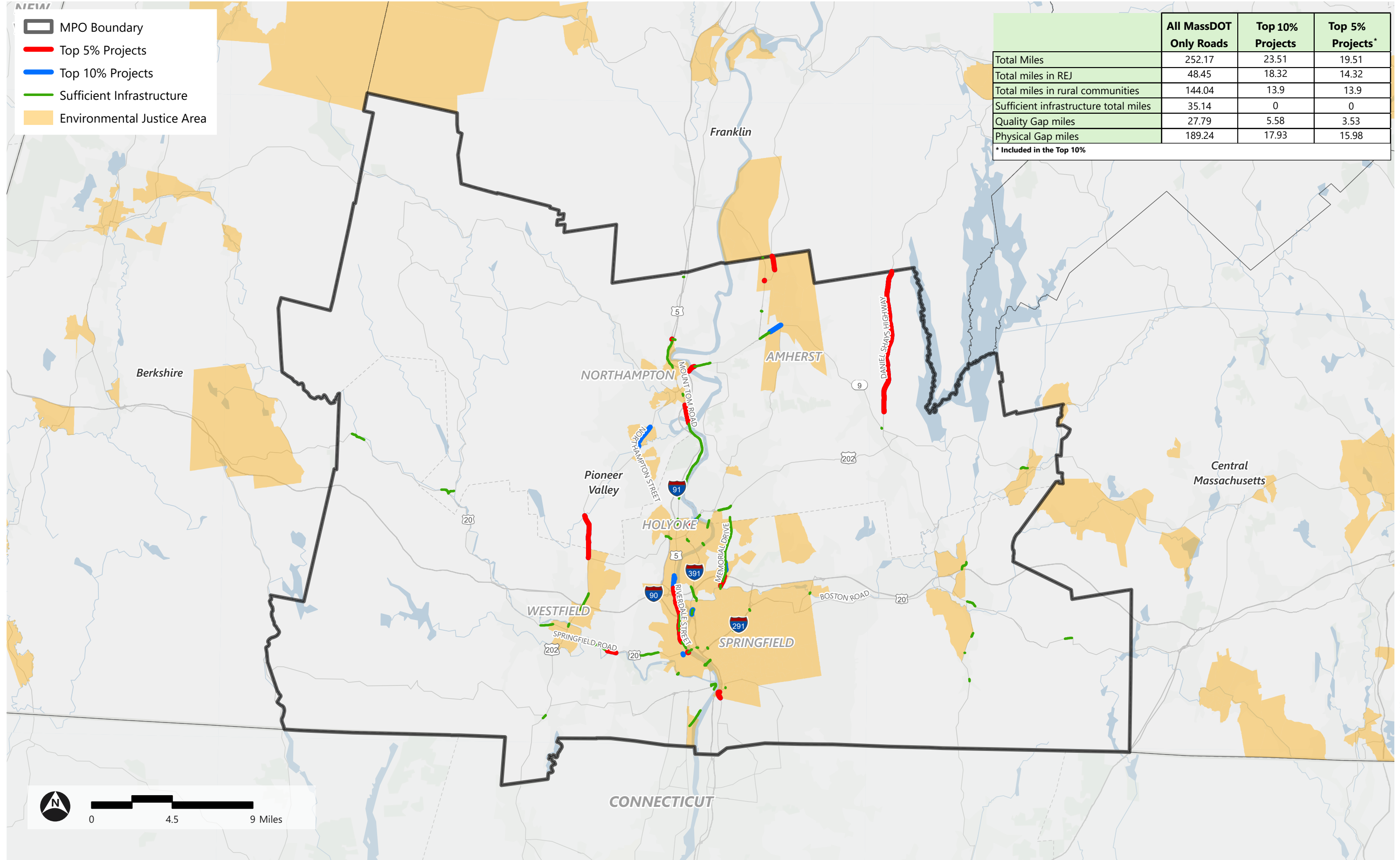


	All MassDOT Only Roads	Top 10% Projects	Top 5% Projects*
Total Miles	102.06	10.47	10.03
Total miles in REJ	42.57	8.91	8.48
Total miles in rural communities	7.94	3.43	3.43
Sufficient infrastructure total miles	25.9	0	0
Quality Gap miles	24.59	4.45	4.14
Physical Gap miles	51.57	6.02	5.89

* Included in the Top 10%

Prioritized Pedestrian Project Locations - MassDOT Roads - Pioneer Valley MPO

MassDOT Next Gen Bike-Ped Vision Map



- MPO Boundary
- Top 5% Projects
- Top 10% Projects
- Sufficient Infrastructure
- Environmental Justice Area

	All MassDOT Only Roads	Top 10% Projects	Top 5% Projects*
Total Miles	252.17	23.51	19.51
Total miles in REJ	48.45	18.32	14.32
Total miles in rural communities	144.04	13.9	13.9
Sufficient infrastructure total miles	35.14	0	0
Quality Gap miles	27.79	5.58	3.53
Physical Gap miles	189.24	17.93	15.98

* Included in the Top 10%



Prioritized Pedestrian Project Locations - MassDOT Roads - Southeastern Massachusetts MPO

MassDOT Next Gen Bike-Ped Vision Map

