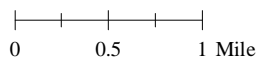


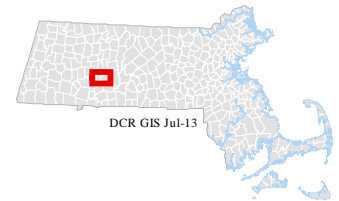
## Mount Holyoke Range Planning Unit

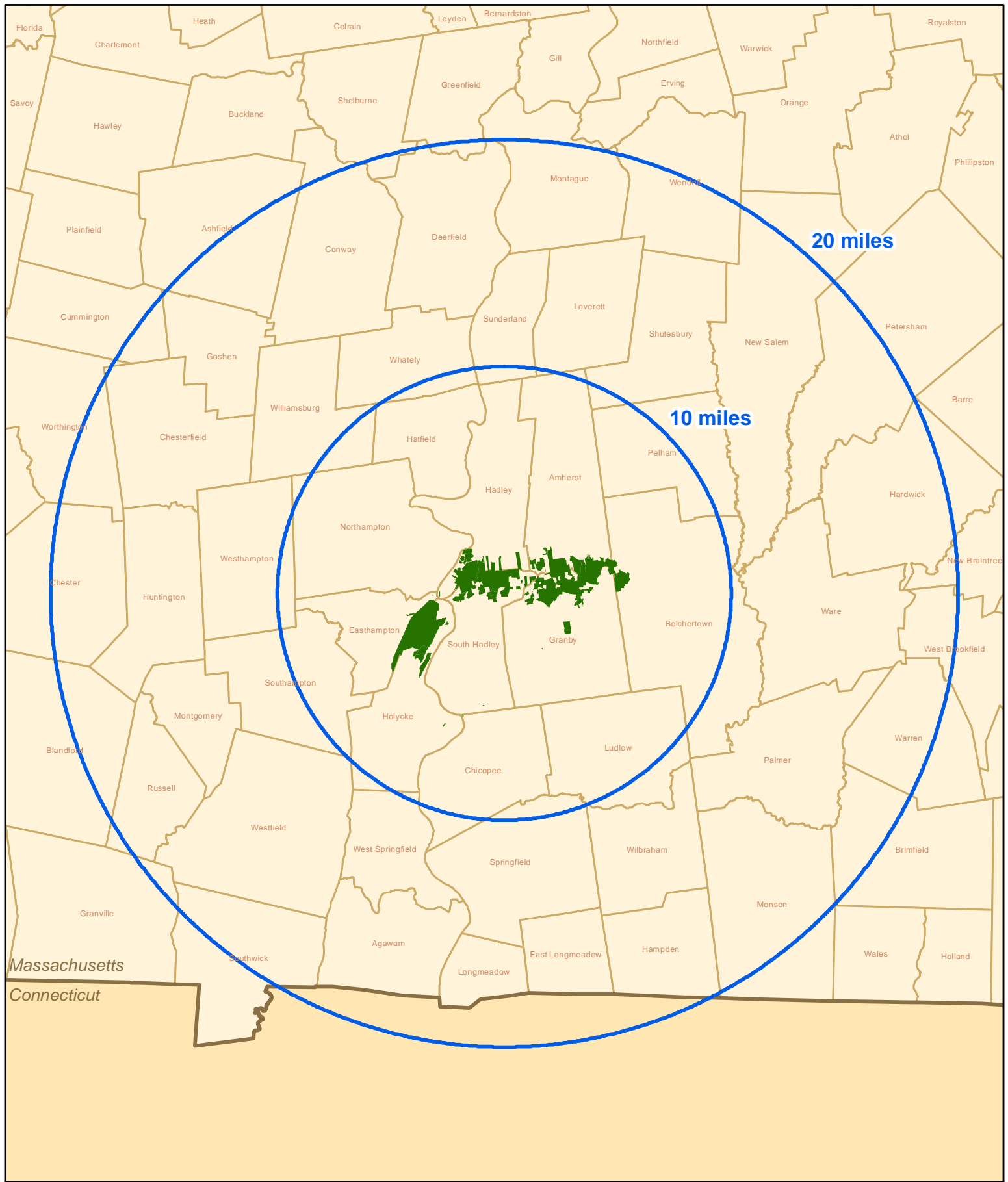
Figure 2.2.1



Geographic data supplied by the Office of Geographic Information (MassGIS) and DCR GIS.

- Interstate
- Major Road
- - Town Boundary
- Open Water
- Mount Holyoke Range Planning Unit
- Fee Interest
- Conservation Restriction
- Other Protected Open Space



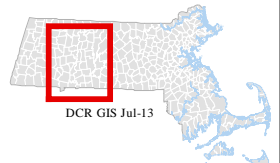


- Mount Holyoke Range Demographic Area
- Mount Holyoke Range Planning Unit
- Massachusetts Town Boundary
- State Boundary

## Mount Holyoke Range Planning Unit

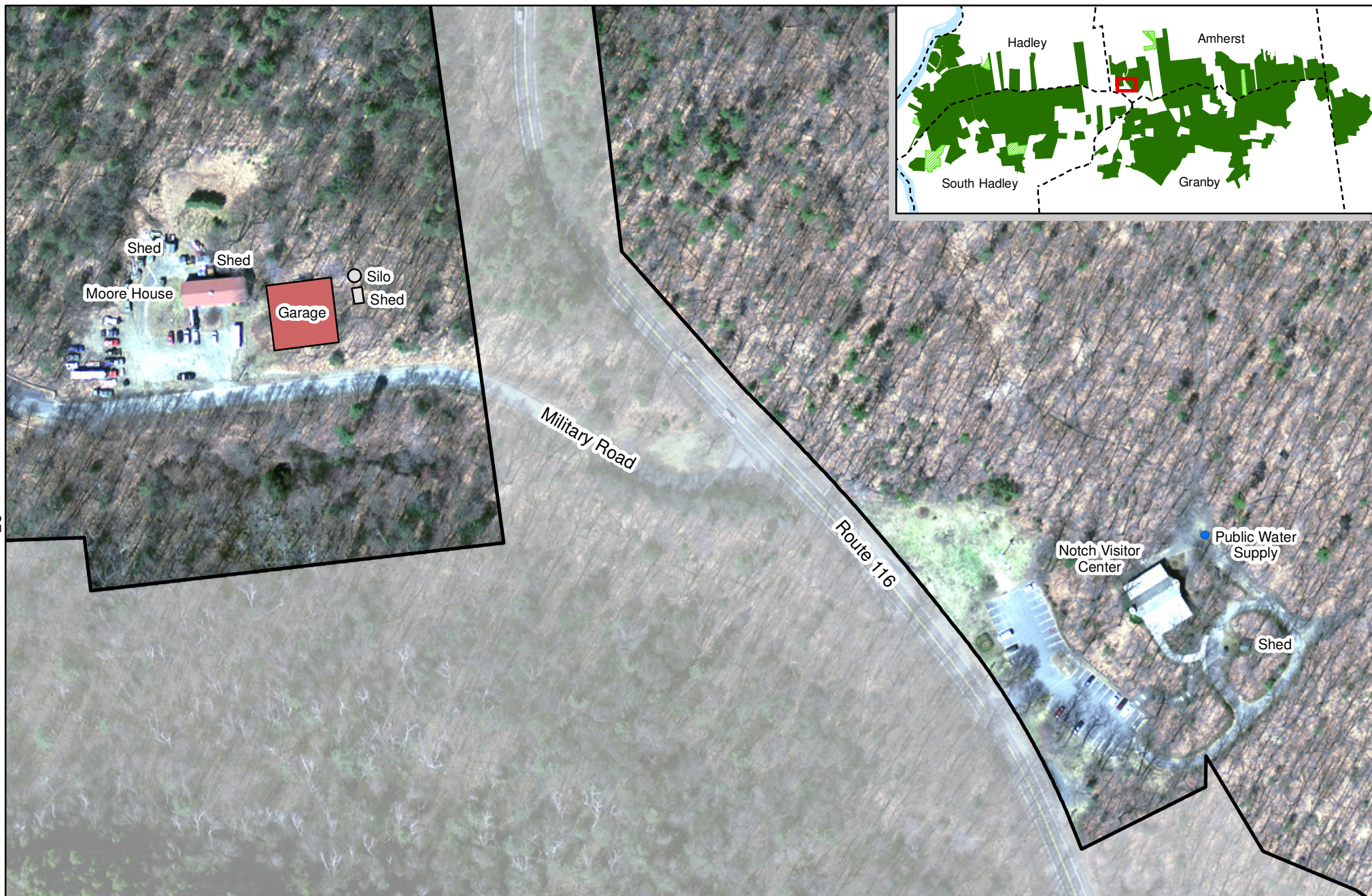
### Demographic Area - Figure 2.2.2

0 1 2 Miles



Geographic data supplied by the Office of Geographic Information (MassGIS) and DCR GIS.

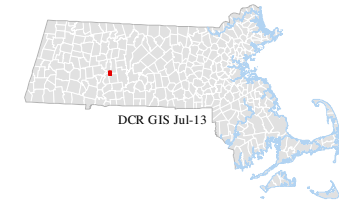
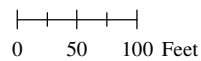




- Mount Holyoke Range State Park
- Inset Map*
- Town Boundary
- Open Water
- Mount Holyoke Range Planning Unit
- Fee Interest
- Conservation Restriction

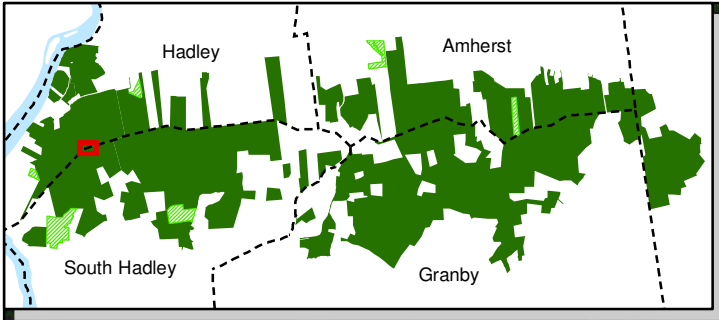
# Mount Holyoke Range State Park

## Notch Visitor Center Area - Figure 2.3.1



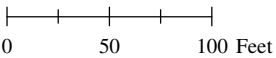
Geographic data supplied by the Office of Geographic Information (MassGIS) and DCR GIS.



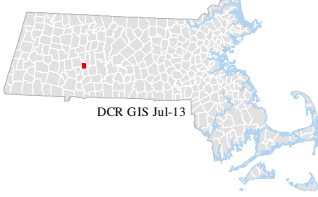


*Inset Map*  
--- Town Boundary  
Open Water  
Mount Holyoke Range Planning Unit  
Fee Interest  
Conservation Restriction

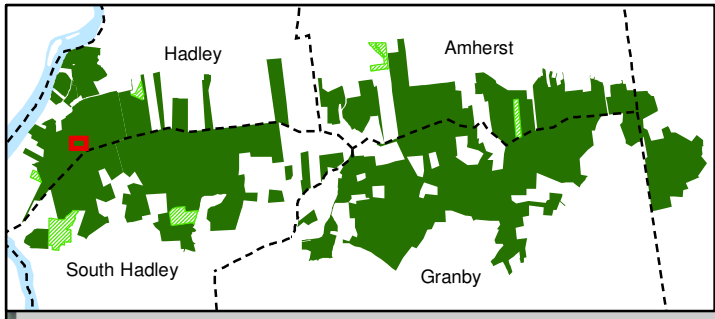
Joseph Allen Skinner State Park  
Summit Area - Figure 2.4.1



Geographic data supplied by the Office of Geographic Information (MassGIS) and DCR GIS.

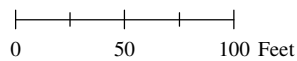




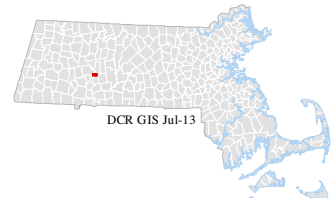


*Inset Map*  
 --- Town Boundary  
 Open Water  
 Mount Holyoke Range Planning Unit  
 Fee Interest  
 Conservation Restriction

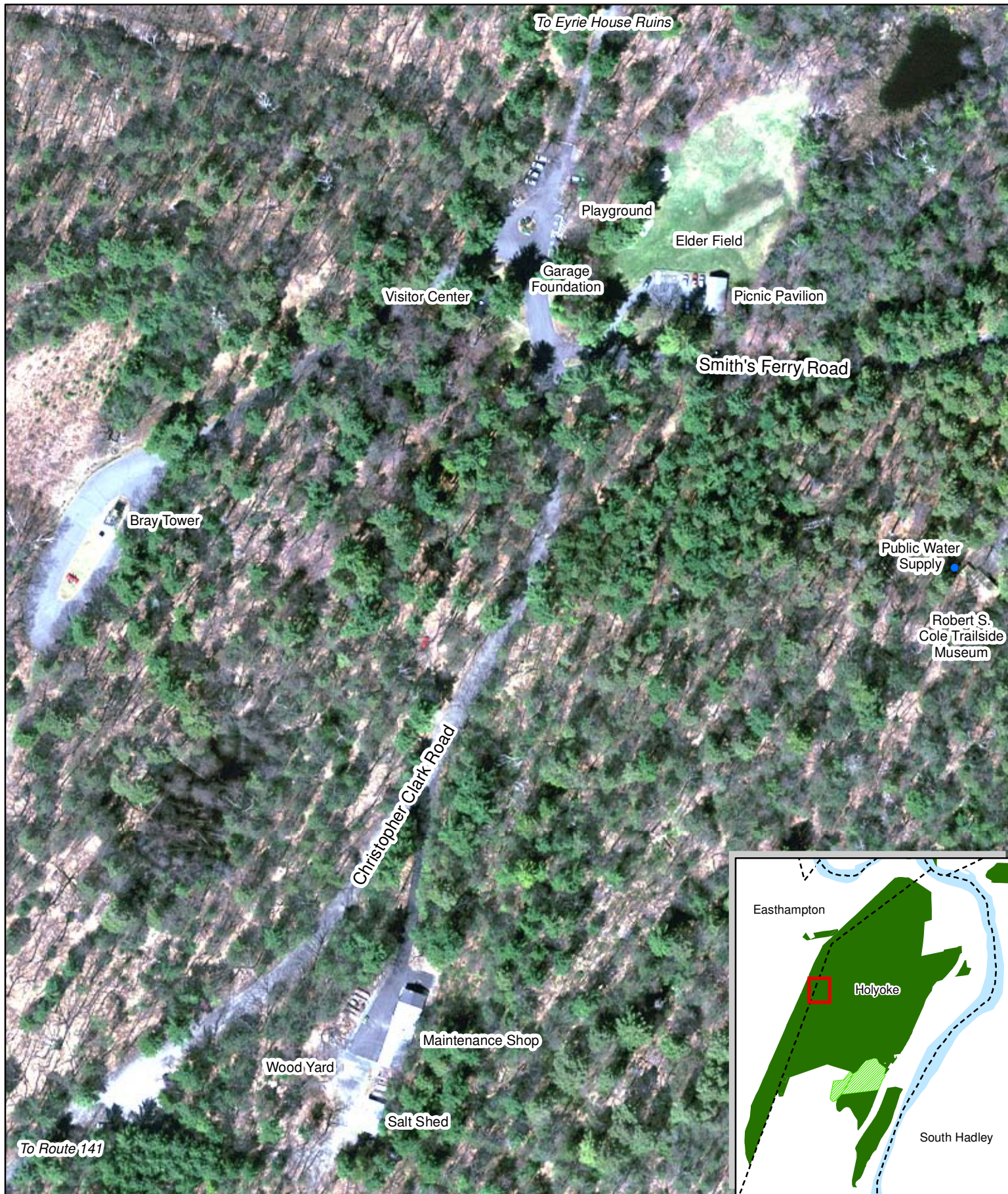
## Joseph Allen Skinner State Park Halfway Area - Figure 2.4.2



Geographic data supplied by the Office of Geographic Information (MassGIS) and DCR GIS.



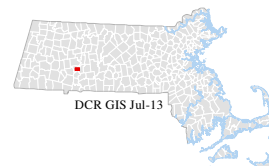




*Inset Map*  
 --- Town Boundary  
 Open Water  
 Mount Holyoke Range Planning Unit  
 Fee Interest  
 Conservation Restriction

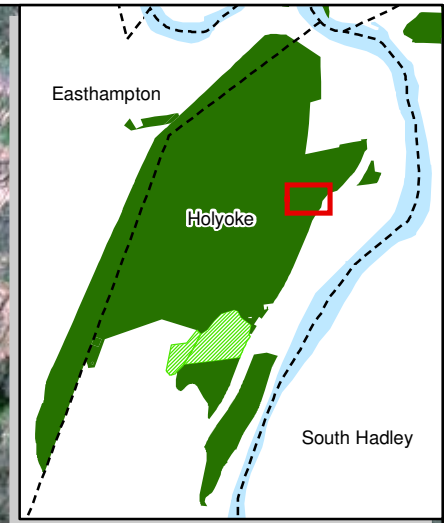
## Mount Tom State Reservation Visitor Center Area - Figure 2.5.1

0 50 100 Feet



Geographic data supplied by the Office of Geographic Information (MassGIS) and DCR GIS.

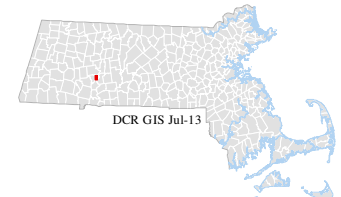
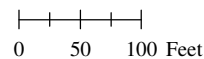




- Inset Map*
- Town Boundary
  - Open Water
  - Mount Holyoke Range Planning Unit
  - Fee Interest
  - Conservation Restriction

## Mount Tom State Reservation

### Lake Bray Area - Figure 2.5.2



Geographic data supplied by the Office of Geographic Information (MassGIS) and DCR GIS.





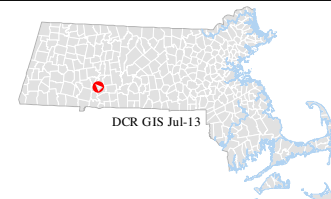
 Holyoke Heritage State Park

## Holyoke Heritage State Park

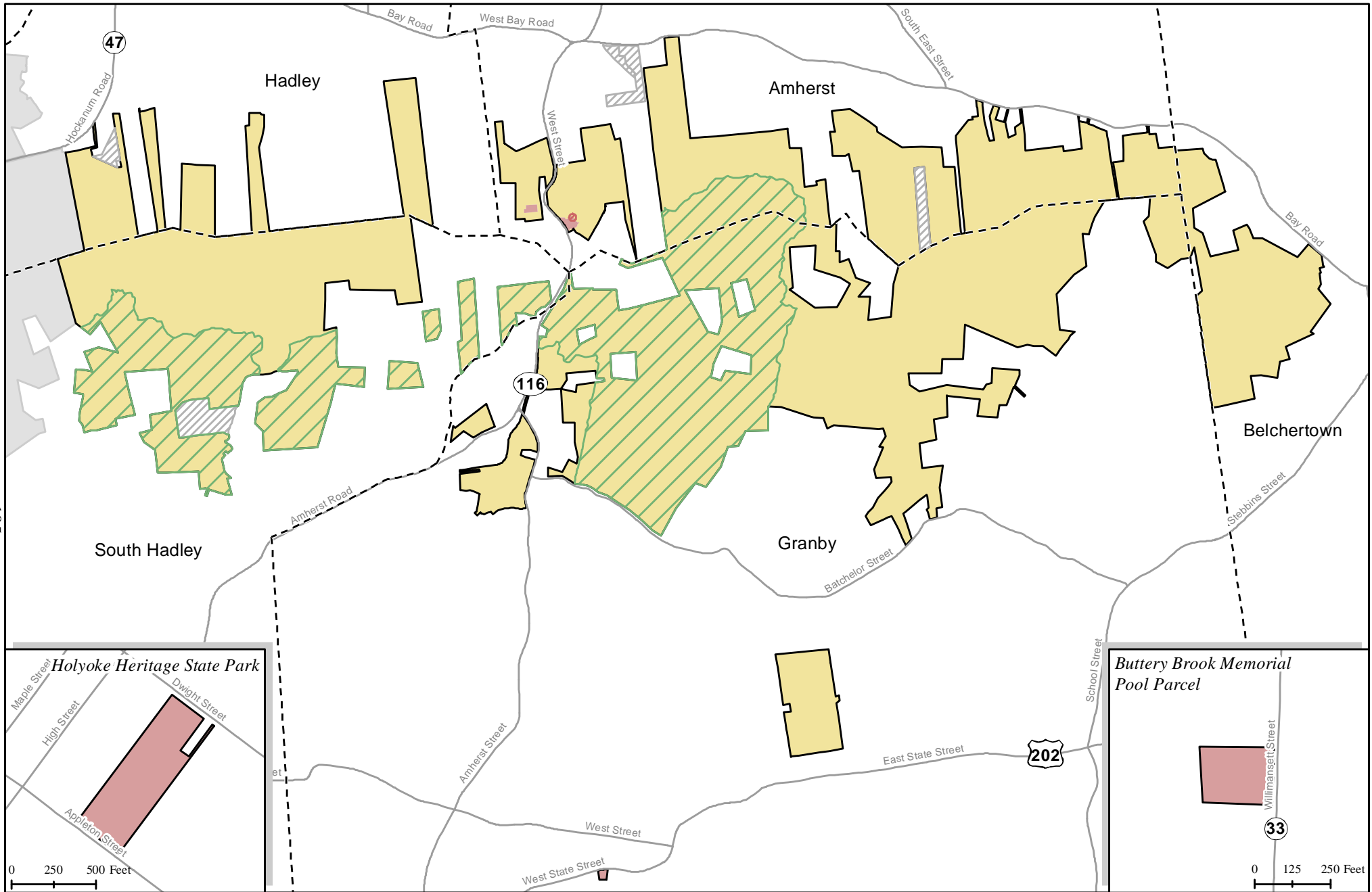
Figure 2.6.1

0 50 100 Feet

Geographic data supplied by the Office of Geographic Information (MassGIS) and DCR GIS.



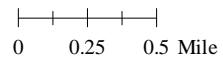




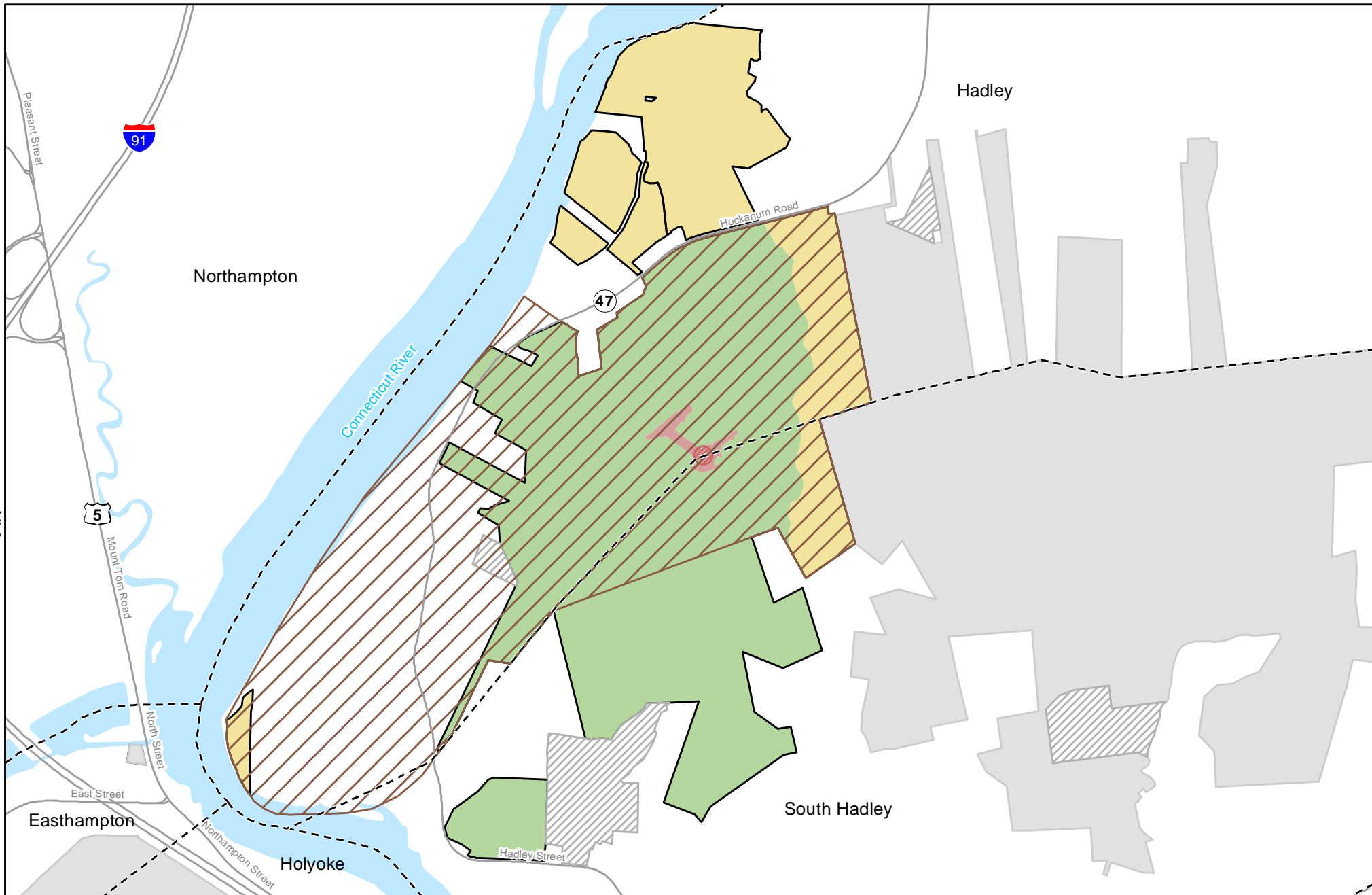
- Land Stewardship Zoning**
- Zone 1
  - Zone 2
  - Zone 3
- Significant Feature Overlay**
- DEP Zone I Wellhead Protection Area
  - Sensitive Aquatic and Vernal Pool Organisms
- Mount Holyoke Range State Park**
- Fee Interest
  - Conservation Restriction
  - Major Road
  - Town Boundary

## Recommended Land Stewardship Zoning

### Mount Holyoke Range State Park - Figure 4.3.1







## Land Stewardship Zoning

- Zone 1
- Zone 2
- Zone 3

## Significant Feature Overlay

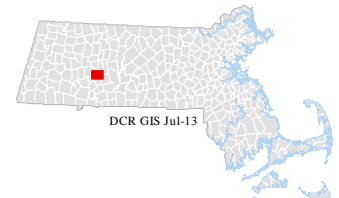
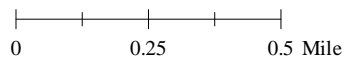
- DEP Zone I Wellhead Protection Area
- Hockanum Rural Historic District\*

## Joseph Allen Skinner State Park

- Fee Interest
- Conservation Restriction
- Major Road
- Town Boundary
- Connecticut River

## Recommended Land Stewardship Zoning

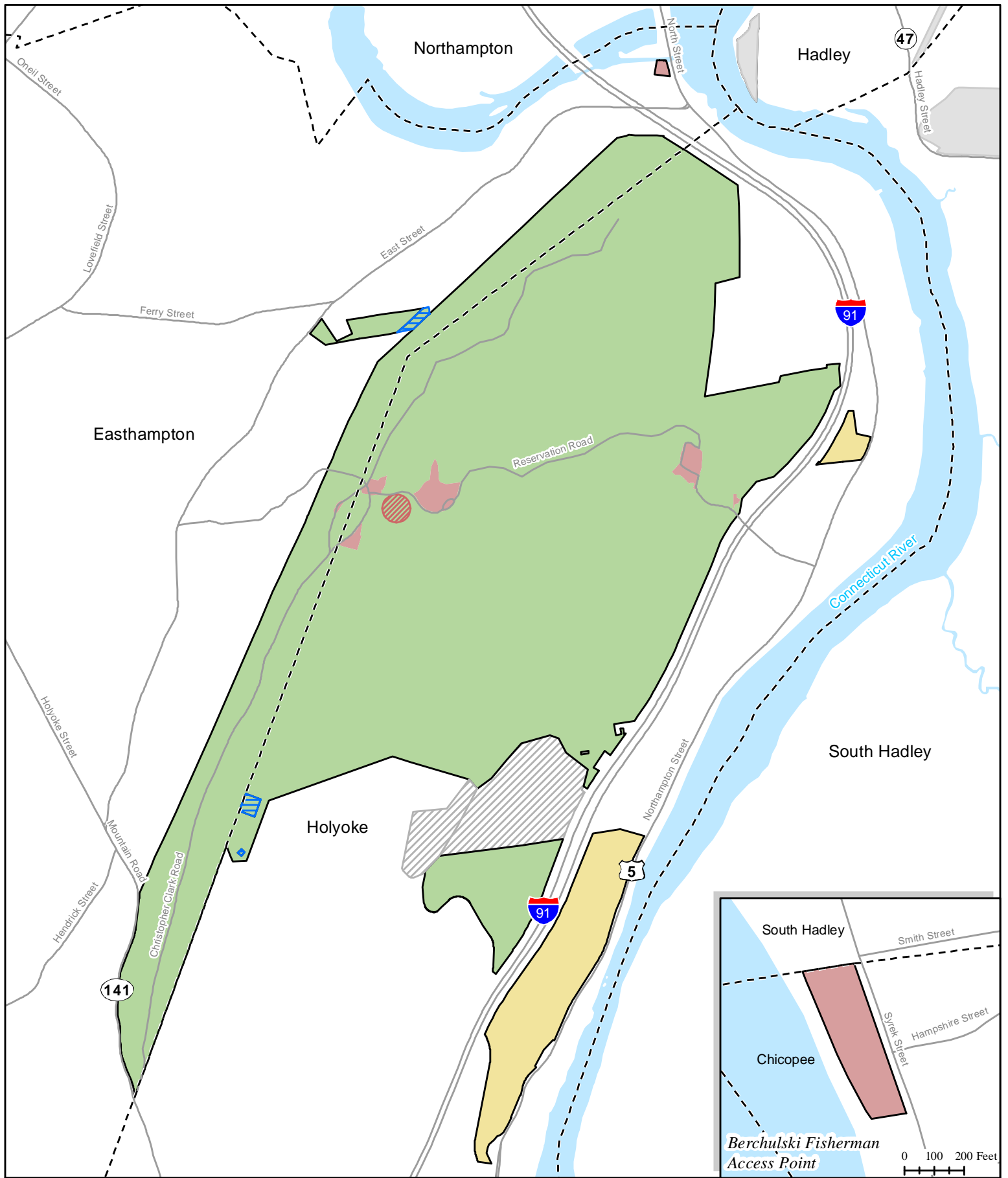
Joseph Allen Skinner State Park - Figure 4.3.2



DCR GIS Jul-13

\*Based on a brief description and sketch map submitted to the National Park Service.  
The eastern boundary was adjusted to accommodate current park boundaries.

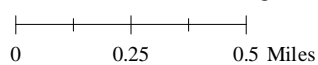




- Land Stewardship Zoning**
- Zone 1
  - Zone 2
  - Zone 3
- Significant Feature Overlay**
- DEP Zone I Wellhead Protection Area
- Mount Tom State Reservation**
- Fee Interest
  - Conservation Restriction
  - Utility Easement
- Major Road**
- Town Boundary
  - Connecticut River

## Recommended Land Stewardship Zoning

### Mount Tom State Reservation - Figure 4.3.3



0 100 200 Feet

Northampton

Hadley

Easthampton

Holyoke

South Hadley

Chicopee

Berchulski Fisherman Access Point

DCR GIS Jul-13

Massachusetts

Geographic data supplied by the Office of Geographic Information (MassGIS) and DCR GIS.