

Lynnfield Center Water District's Proposal to Obtain Supplemental Water Supply from MWRA Under the Interbasin Transfer Act

WRC Staff Recommendation and Request for Vote

March 13, 2025

FACTS PERTAINING TO THE APPLICATION

- Lynnfield Center Water District's (LCWD's) water supply consists of 4 groundwater sources in the Ipswich River and North Coastal Basins
- Several sources are contaminated with PFAS, iron, manganese, and nitrate
 - Treatment is/will be in place for PFAS, iron, manganese
 - The Phillips Road tubular wellfield is offline due to elevated levels of nitrate
- LCWD is applying for admission to MWRA, which has its sources in the Chicopee River and Nashua River Basins
- Maximum proposed transfer of 0.83 million gallons per day (MGD)

LCWD Water System

**TOWN OF
LYNNFIELD**
Massachusetts



**LYNNFIELD
CENTER WATER
DISTRICT**

Water System
July 2024

Water Network

- SysValve
- HydValve
- Hydrant
- Water Tank
- Water Pipe
- Water District Boundary
- Pump Station

Basemap

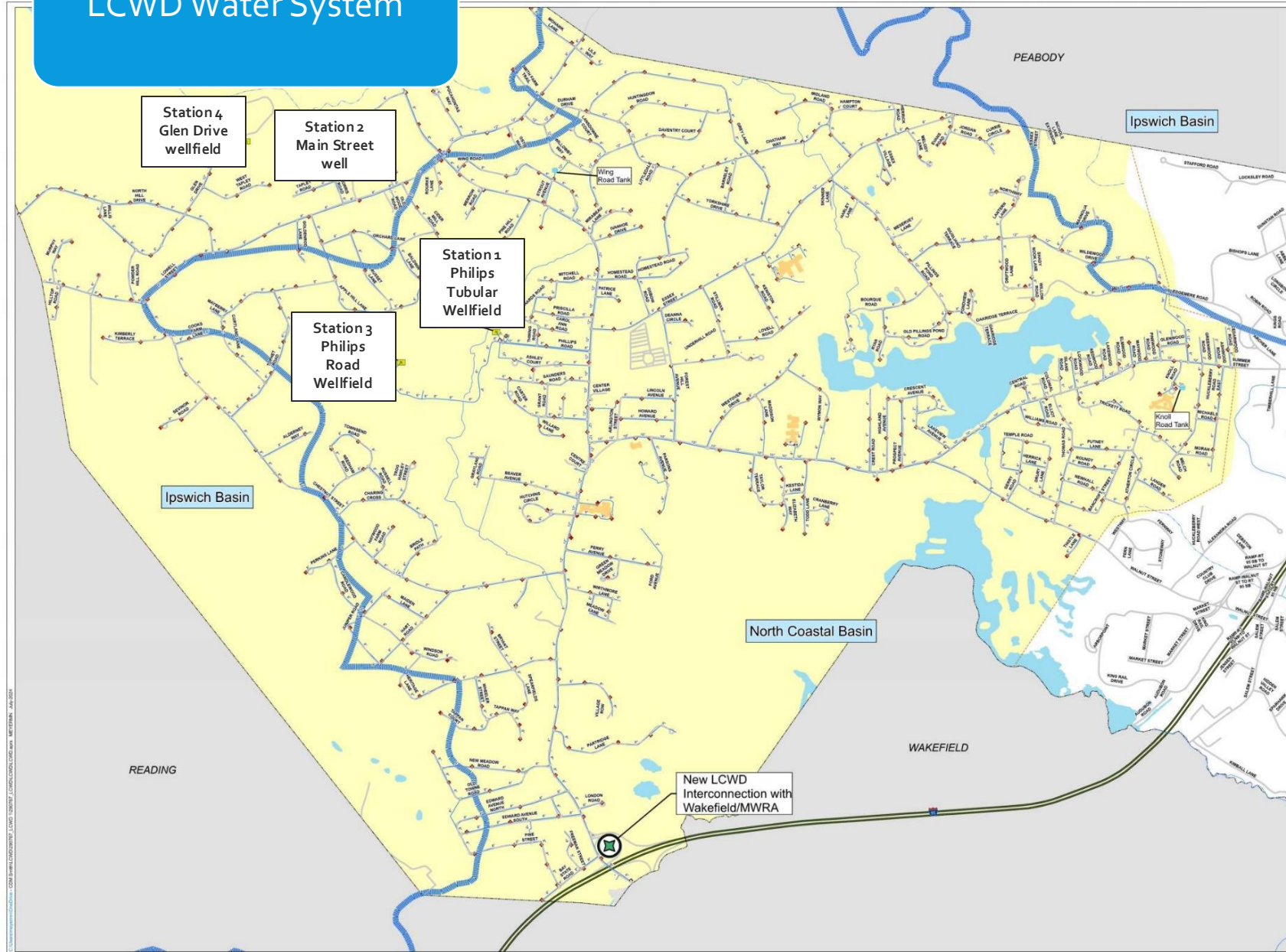
- Interstate
- Town Boundary
- Major Basins
- Local Road
- Town-owned Building
- Lynnfield Water District
- ◆ New LCWD Interconnection



0 500 1,000 2,000
Feet

Sources: LCWD, CDM Smith,
and MassGIS
Coordinate System: NAD83 Mass,
Data Plane: Massnad FIPS 2011 Feet

**CDM
Smith**



CONDITIONS OF THE APPROVAL



LCWD must commit in writing to abide by any required conditions. Conditions include:



Documentation of a water bank program must be provided to DEP



Additional rebate and water conservation resources, ICI outreach to encourage conservation



Continue annual M36 audits, leak detection surveys every 3 years, use results to inform water loss control program and activities



Continue meter repair/replacement program and annual master meter calibration



Revise DMP to define triggers and match state DMP guidelines

SUMMARY OF PUBLIC COMMENTS



A public hearing on the February 13th, 2025 Staff Recommendation was held on Zoom on February 26, 2025.



No comments were received at the public hearing



No written comments were received



February WRC meeting: require meter replacements every 10 years. The M36 audits are expected to indicate if metering is an issue.

CHANGES SINCE THE 2/13 STAFF RECOMMENDATION

Updated with information on public hearings and public comments

Existing outdoor water use restriction bylaw provided, condition removed

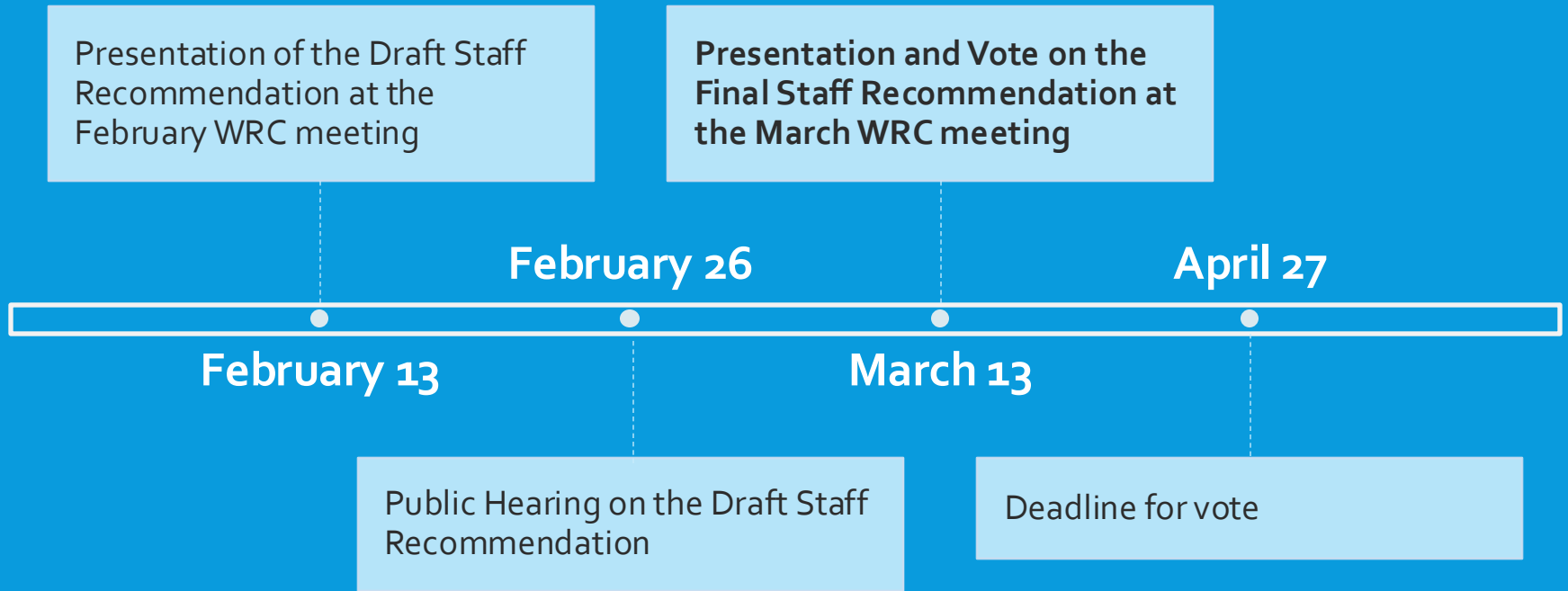
Annual M36 audit reports to the WRC for the first 5 years

Leak detection survey frequency changed to every 3 years to match Performance Standards

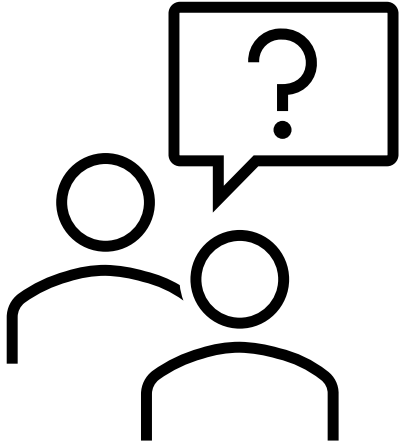
Removed requirement to submit future water loss control program updates

Clarified meter repair/replacement condition, added 5-year reporting requirement

Modified suggestion for LCWD to work with Town on a private well bylaw



TIMELINE



QUESTIONS