

Massachusetts Statewide Freight Plan

Open House 2 – Meeting Summary

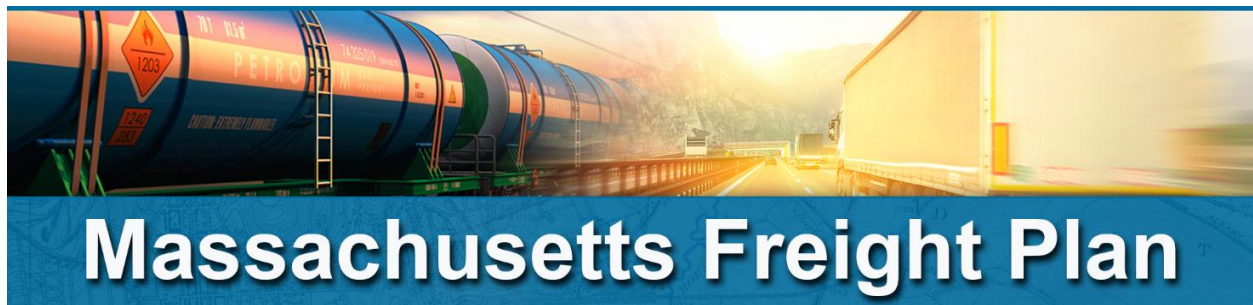
presented by

Massachusetts Department
of Transportation



Funded by the Federal Highway Administration

March 9, 2017



Open House #2: Meeting Summary

Date: March 9, 2017, 4:00 PM to 5:30 PM

Location: The Conference Center at Bentley University, 175 Forest Street, Waltham, MA

Present

Project Staff:

Gabe Sherman, Massachusetts Department of Transportation (MassDOT) Office of Transportation Planning (OTP); Nathan Higgins and John Kaliski, Cambridge Systematics (CS); Regan Checchio and Sarah Paritsky, Regina Villa Associates (RVA).

Freight Advisory Committee Members:

Name of FAC member	Organization	Present	Sent Designee
Tom Tinlin, Chair	MassDOT Highway Division		
Ed Anthes-Washburn	Port of New Bedford		
Chris Atwood	Unistress Corp.	<input checked="" type="checkbox"/>	
Joe Barr	City of Cambridge		
Pierre Bernier	Maritime International		
Gary Roux	Massachusetts Association of Regional Planning Agencies (MARPA)		
Matthew Burwell	Legal Sea Foods		
Joe Carter	SBA Global		
Tom Cosgrove	NFI Industries		
George Fournier	Cumberland Farms		
Charles Hunter	Genesee & Wyoming Railroad		
Colleen Kissane	Connecticut Department of Transportation		
Mark Marasco	Maple Leaf Distribution Services		
Lisa Wieland	Massport	<input checked="" type="checkbox"/>	
Brandon Wilcox	Federal Highway Administration (FHWA)	<input checked="" type="checkbox"/>	
Kevin Young	Global Partners		

Members of the Public:

Thomas Carbone, Andover Health Division

Debora Babin Katz, TrucBrush

Walter Bonin, Boston Metropolitan Planning Organization (MPO)

Frank DeMasi, Association for Public Transportation

Laura Gilmore, Massport
Christopher Grillo
Bill Kuttner, Central Transportation Planning Staff (CTPS)
James Tracey, U.S. Postal Service

Purpose

The second Open House was held to introduce the Massachusetts Freight Plan to the Boston region, share the work completed to date, and gather input from the public.

Format

The meeting was arranged in an open house format with boards at stations set up around the room. Four informational boards were set up on one side of the room and staff were available to answer questions:

1. Map
2. Background
3. Industries
4. How Freight Moves

Four additional boards with questions were set up on the other side of the room (see: Open House Activity Results, page 4). Participants responded to a question on each board by writing responses on sticky notes. The project team posted one or two responses derived from the interviews to provide an example response.

A short presentation was projected in the back of the room (on a loop). The slides included information about the objectives, background, and timeline of the Freight Plan (see: Presentation, page 9).

OPEN HOUSE ACTIVITY RESULTS

How is the freight world CHANGING? What do we need to prepare for?

- Interview Feedback Example: There are issues with urban freight deliveries as bicycle traffic increases.
- Interview Feedback Example: E-Commerce is having a huge impact on deliveries in my institution.
- Freight trains are getting longer and harder to park. Adequate space away from switches and residences is needed.
- Provision of alternative fuels for trucking diesel exhaust fluid (DEF).

How can MassDOT INVEST to relieve bottlenecks and maximize utility?

- Interview Feedback Example: We need double stack clearance. Fix the Hoosac Tunnel! 286k Rail!
- Interview Feedback Example: We need more truck stops on I-495.
- Rail yards in the northeast need to be expanded for storage.
- Need plate F Clearance and 286K lot capacity on all eastern Massachusetts rail lines.
- MassDOT should encourage CSX to short line all freight rail branches in eastern and South Coast of Massachusetts.

What **POLICIES AND REGULATIONS** support an efficient freight system?

- Interview Feedback Example: Oversize/overweight permitting is getting better but still not as good as other states
- Increase means to replace truck traffic out of NY/NJ Port which goes through I-84 and Mass Pike, I-290, I-495. Rail 9 short sea shipping.
- Overnighting of trains (and long term parking) requires better infrastructure. Plugging in diesels instead of idling will help with noise/emissions but electric stations are needed.
- Identify appropriate lay over locations for rail freight, away from residences.

How can MassDOT COLLABORATE with system users to collect feedback?

- Interview Feedback Example: We need more truck education to help build the workforce

PRESENTATION

Our objectives

- Fulfill all **federal requirements** for State Freight Plans
- Articulate a **vision** for the freight system
- **Raise awareness** of freight's role in the economy
- Use **scenario planning** to address an **uncertain future** and develop **robust strategies**

How we see the freight system

Economy

*Types of Industries, Number of Households,
Types and Volumes of Commodities*

Logistics

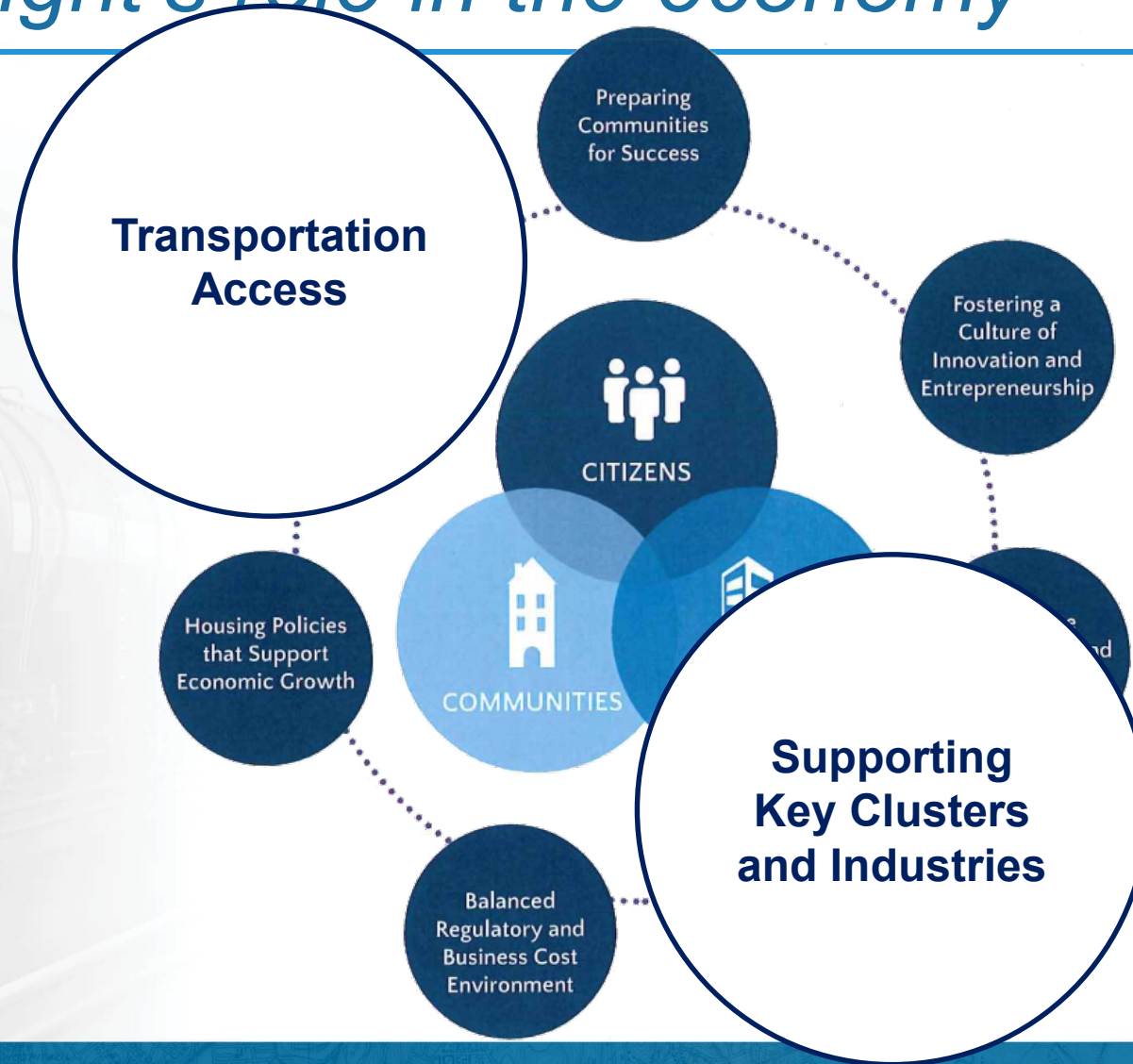
Supply Chains, Distribution Networks

Transportation

*Infrastructure: Highways, Rail Lines, Ports, Airports...
Vehicles/Flows: Trucks, Planes, Rail Cars, Ships...*

Policy and Regulation
Ownership, Use, Pricing, Taxation...

Freight's role in the economy



What we are doing

Aug Sep Oct Nov Dec Jan Feb Mar Apr May Jun Jul

**Synthesize 30+ reports
Analyze Freight Data
4 Agency Round Tables
25+ Industry Interviews**

**4 FAC Meetings and
Open Houses**
Scenario Planning to
articulate vision, goals,
objectives, and robust
strategies.

**2017
Freight
Plan**

How MassDOT thinks about overall transportation goals



Customer Experience

Provide reliable and accessible services to MassDOT and MBTA customers and ensure that they are satisfied with the services provided.



System Condition

Ensure that the transportation system is well maintained and follows best practices for maintaining, preserving, and modernizing assets.



Budget and Capital Performance

Maximize capital investment effectively and efficiently by delivering programs and projects that produce the greatest benefits to the Commonwealth, its residents, and its visitors.



Safety

Provide and support a multi-modal transportation network that is safe for our workers and all users.



Healthy and Sustainable Transportation

Invest in and support a transportation system that promotes and protects the health of all users and the natural environment.

How MassDOT thinks about investment priorities

1

Reliability

Maintain and improve the overall condition and reliability of the transportation system

2

Modernization

Modernize the transportation system to make it safer and more accessible and to accommodate growth

3

Expansion

Expand diverse transportation options for communities throughout the Commonwealth