



MASSACHUSETTS DEPARTMENT OF
CONSERVATION AND RECREATION

Pilgrim Memorial State Park DCR 2020 Improvements Landscape Rehabilitation Design



Public Meeting

Thursday, March 22, 2018
6:30 p.m. - 8:00 p.m.

Plymouth Public Library
Otto Fehlow Room
132 South Street
Plymouth, MA 02360



Commonwealth of Massachusetts

Governor

Charles D. Baker

Lieutenant Governor

Karyn E. Polito

Energy and Environmental Secretary

Matthew A. Beaton

Department of Conservation and Recreation Commissioner

Leo P. Roy



DCR Mission Statement

*To protect, promote and enhance our
common wealth of natural, cultural
and recreational resources
for the well-being of all.*

Purpose of Meeting

- Review Background and Pilgrim Memorial State Park 2020 Project Goals
- Update on Work to Date
- Present design for Landscape Rehabilitation
- Review schedule
- Outline impacts during construction
- Update on Bathroom Building Rehabilitation
- Answer questions

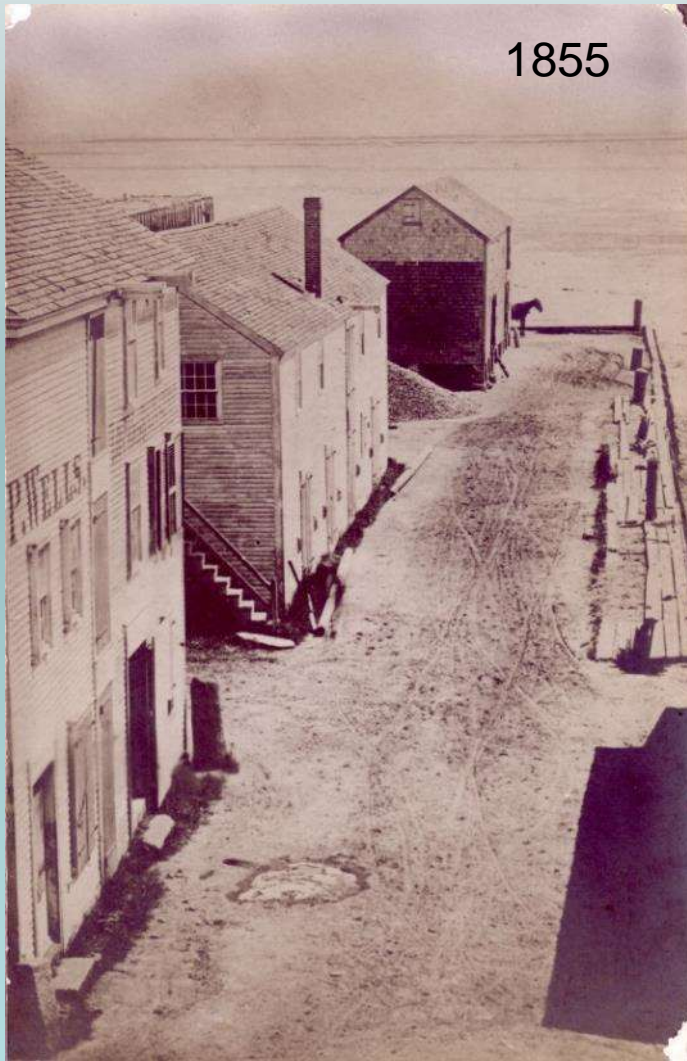


MASSACHUSETTS DEPARTMENT OF
CONSERVATION AND RECREATION

Background and Project Goals



Background



Copyright 1905 by the National Co.
G. 7327 Plymouth Rock, Plymouth, Mass.



Upper portion of
rock on display on
at Pilgrim Hall,
c1870



Cole's Hill c. 1920





Plymouth waterfront, pre-1920



Tercentenary Celebrations 1921

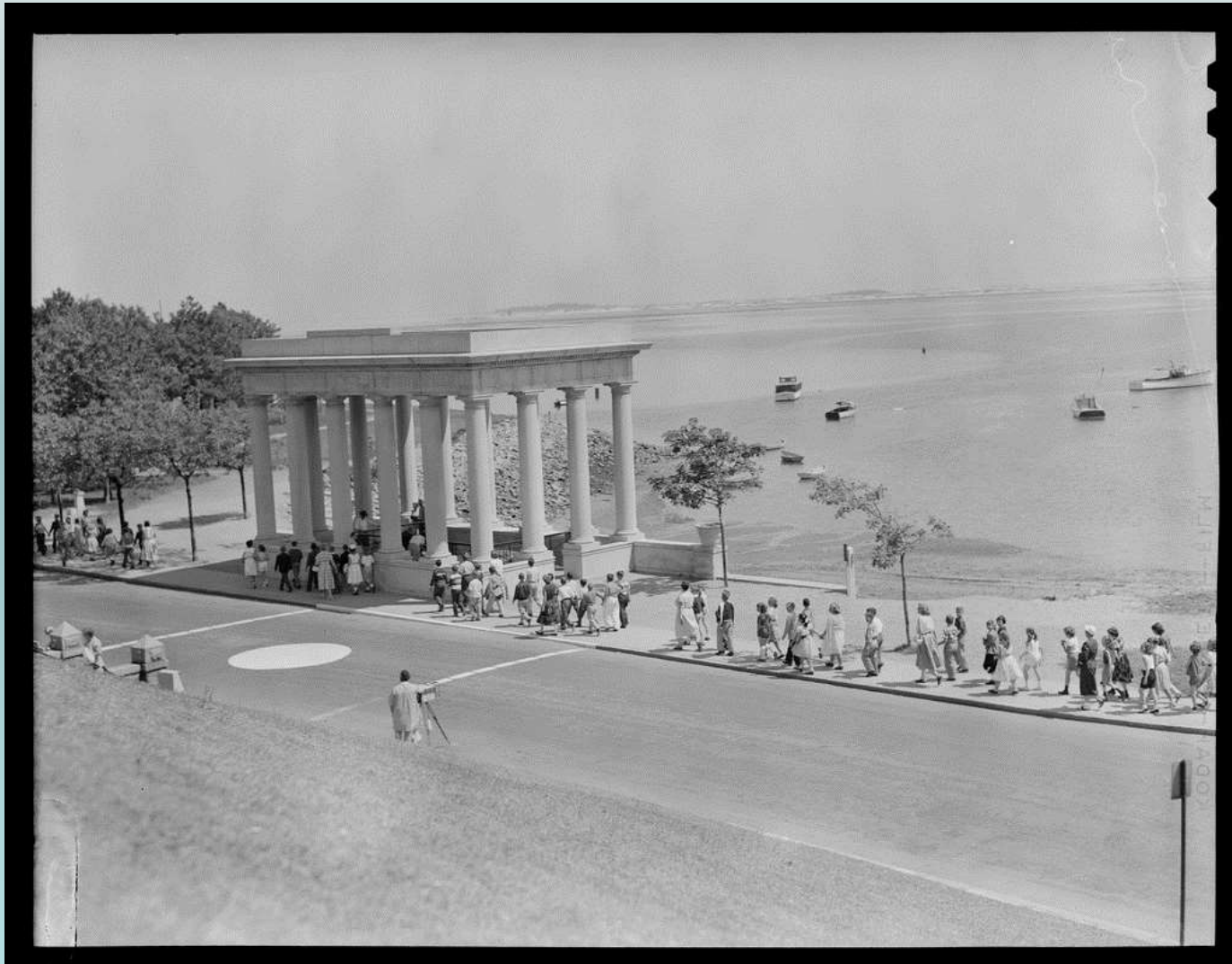


Cole's Hill, Winter 1921/22



Pilgrim Memorial
State Park, 1930
Courtesy Pilgrim Hall Museum

Pilgrim Memorial State Park



1950s



DCR 2020 Improvements - Project Goals

- Rehabilitate Pilgrim Memorial State Park in advance of the 2020 Celebrations
 - Bathroom Building upgrades and accessibility improvements
 - Landscape rehab including repairs to paths, turf at Amphitheater and accessibility upgrades
 - Improve parking areas
 - Conservation of monuments and memorials
 - Repairs to Plymouth Rock

Background – Work to Date



Portico Rehabilitation 2009



Amphitheater 2014

Background – Work to Date



Sarcophagus Conservation 2016



Rock Repairs

2017

Background – Work to Date



Project Team

Design - Landscape Rehabilitation

Pressley Associates, Inc. and Coastal Engineering, Inc.

Pilgrim Mother Fountain Conservation Subconsultant

Skylight Studios, Inc.

Design - Bathroom Building Rehabilitation

LDa Architecture and Interiors

2017 Projects (Complete)

Plymouth Rock and Forefathers Monument

Ivan Myjer, Building and Monument Conservation

Bronze Conservation

Rika Smith McNally & Associates

DCR 2020 Landscape Rehabilitation

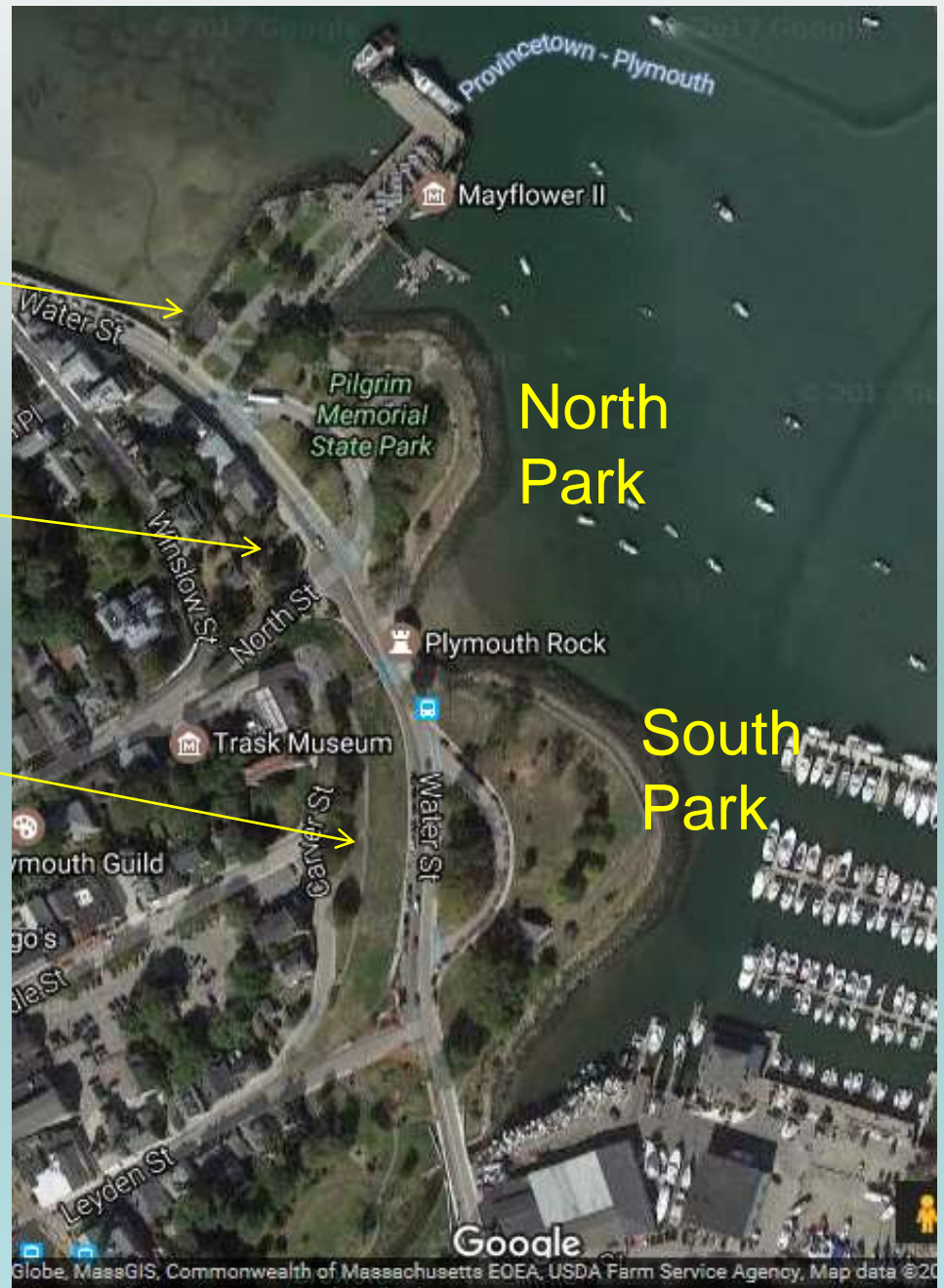
- Existing Conditions
- Design
- Schedule
- Impacts during construction

Bathroom
Building

Pilgrim Mother
Garden

Cole's Hill

Project Locus



Existing Conditions



Existing Conditions



Path surfaces and curbing worn out



Poor condition at top of slope, pavement encasing tree



Localized collapses along rip rap

Storm Damage



Existing Conditions



Repointing, bulkhead
repairs needed



Missing medallions,
worn railings



Deteriorated pebble
flooring

Existing Conditions



Grass is in poor condition



Wall, stairs need repair



Existing Conditions



Paving and sidewalks in poor condition



Accessible parking can be improved

Existing Conditions



Plantings and Fountain need rehabilitation

Pilgrim Mother Garden is not universally accessible

Landscape Scope of Work

- Rehabilitate pathways, adding paving in South Park
- Restore collapsed top of slope
- Repair turf and add irrigation at Amphitheater
- Enhance existing vegetation, improve circulation and add benches
- Maximize accessibility (Parking, Pilgrim Mother Garden)
- Repair interior flooring, iron railings, and repoint seaward facing walls at Portico
- Install bulkhead (below grade) to protect the Rock

Landscape Design



North Park





South Park





Reset lower stairs

Refurbish railing

Repair and repoint wall

Repair light post

Repair irrigation

Rehabilitate pathways and reset
curb for ADA

New groundcover at Sarcophagus

New cabinet

Cole's Hill

Portico

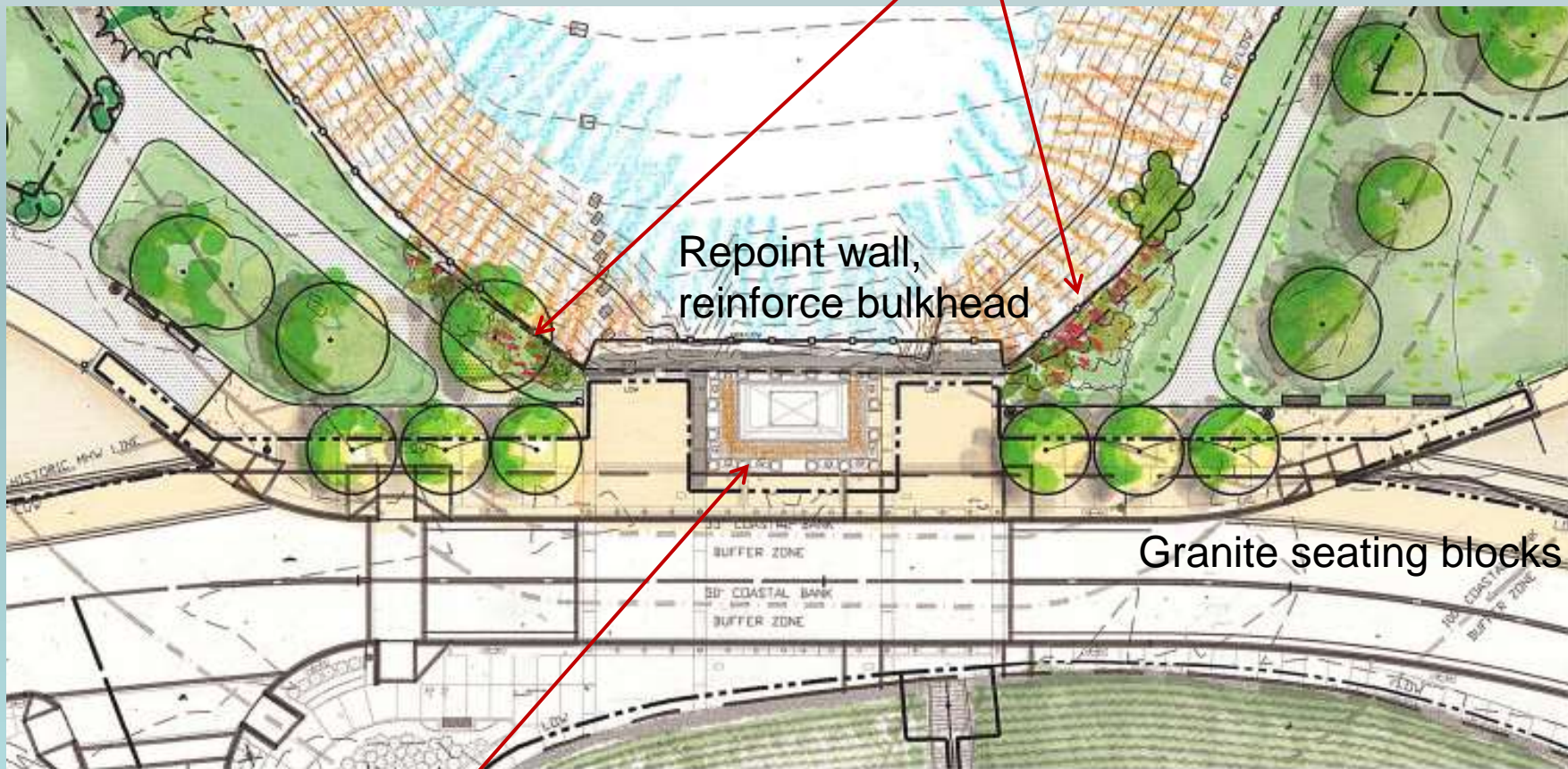
Rehabilitate pathways and add
planted strip on water side

Add low native plantings

Repoint wall,
reinforce bulkhead

Granite seating blocks

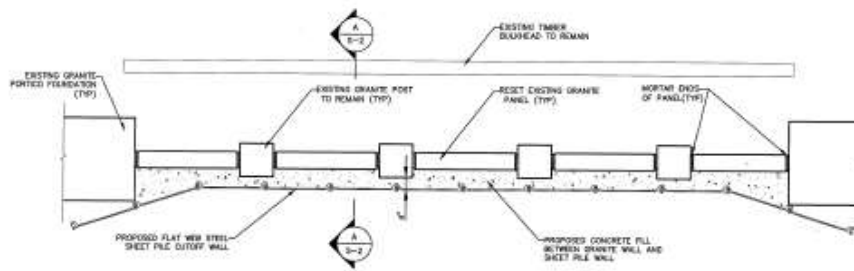
Restore pebble flooring, refinish rails, restore medallions



Reinforce Portico Bulkhead

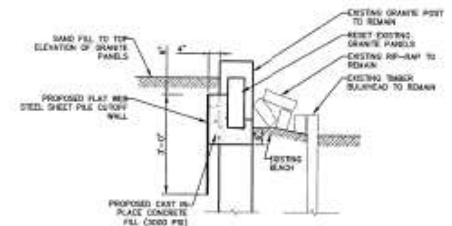


Existing bulkhead with sandbags behind



PROPOSED STONE BULKHEAD REPAIR

SCALE: 1/2" = 1'-0"



SECTION A-A

SCALE: 3/4" = 1'-0"

Pilgrim Mother Garden



Schedule- Landscape Rehabilitation

- Bids Due 1/31/18
- DCR conducts due diligence
- Award expected by 4/1/18
- Construction 4/1/18 – 10/31/18
 - Contractor will prepare sequence and pedestrian access plan
 - Access to Portico, bathrooms, Pier/Exhibits and Plymouth Plantation Shops at all times

Impacts During Construction

- Contractor will submit sequencing plan
- Parts of the park will be closed in stages, using temporary fencing
- Parking areas will be closed at times
- Cole's Hill stairs will be closed during repairs
- DCR permits for events will be limited; alternate locations will be offered
- South Park lawn unavailable summer 2018
- Some noise and dust during work hours

Communication and Outreach

- DCR project webpage <https://www.mass.gov/service-details/pilgrim-memorial-state-park-2020-improvements-project>
- “Project Updates” via email - To subscribe, please request through email to Mass.Parks@state.ma.us
- Information posted on-site at DCR bulletin board
- Staff training
- Interpretive programs will integrate the story of the 2020 Improvements Project
 - Rock Talk
 - Park Tour
 - Stationary exhibits/programs

Update on Other 2020 Projects

- Bathroom Building Rehabilitation
 - Design process will resume in April 2018
 - Planned bidding in late summer 2018
 - Construction over winter 2018/2019
- Installation of pay and display meters at parking areas
- Bus parking permits

Questions and Answers

Additional Information

For more information:

Project Web Page: <https://www.mass.gov/service-details/pilgrim-memorial-state-park-2020-improvements-project>

Web: <https://www.mass.gov/service-details/materials-from-past-meetings>

If you have questions or concerns or would like to be added to an email list to receive DCR general or project-specific announcements:

Email: **Mass.Parks@state.ma.us** Call: **617-626-4973**