



MASSACHUSETTS  
**Department of  
Early Education and Care**



# Advisory Council

March 6, 2025

# Agenda

1. Welcome, Introductions and Agency Updates
2. EEC Key Performance Indicator (KPI) Dashboards
3. Child Care Financial Assistance (CCFA) Regulatory Revisions
4. Preschool Development Grant (PDG) Birth to Five
  - Family Advisory Council Development
  - Early Childhood Needs Assessment



# EEC Key Performance Indicator (KPI) Dashboards

# Key Performance Indicator (KPI) Goals

- 1 Identify key performance metrics aligned to EEC's strategic objectives and priorities
- 2 Develop data dashboards to support using these metrics to track progress on EEC's strategic priorities
- 3 Increase transparency and public access to KPIs and other data metrics of importance

# Key Performance Indicators

## BY STRATEGIC OBJECTIVE



### Family Access

- Percent of children enrolled in formal early education and care (overall) over time
- Percent of children in households with incomes at or below 50% SMI participating in CCFA over time
- Number of children active on waitlist by month
- **NEW!** Proportion of EEC licensed/funded programs participating in CCFA
- Child Care Financial Assistance (CCFA) caseload over time



### Program Stability

- Licensed/funded early education and care capacity over time
- Number of licensed/funded early education and care programs over time
- Number of early education and care programs opening/closing by month
- **NEW!** Number of licensed Residential and Placement (R&P) programs
- **NEW!** Capacity of licensed Residential programs



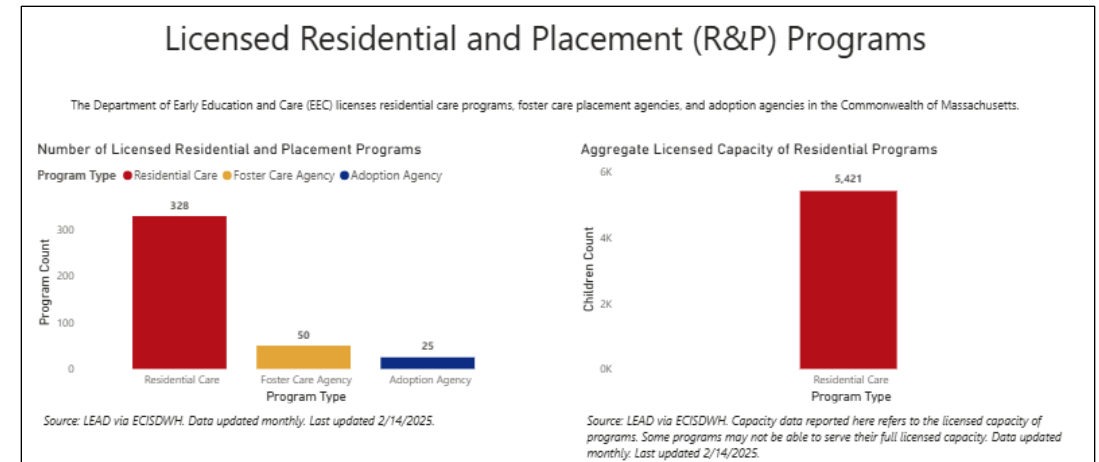
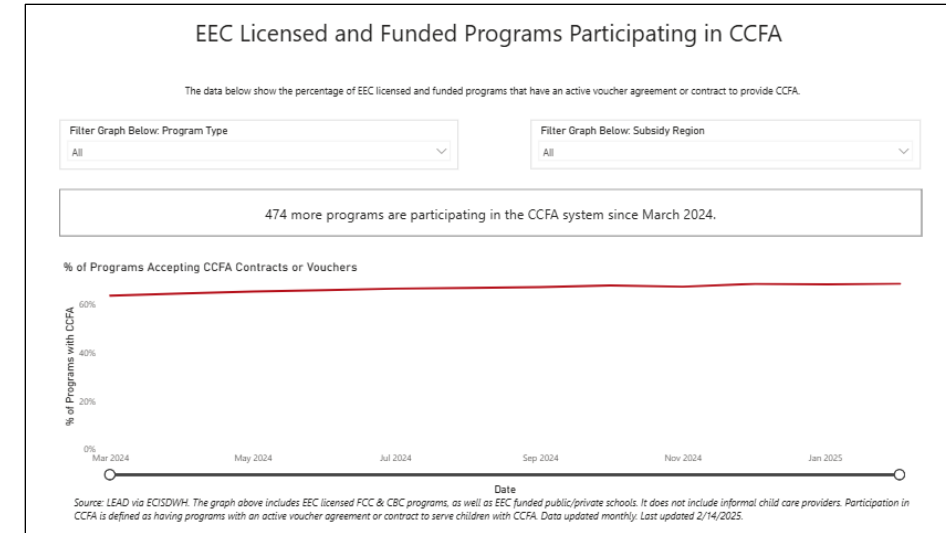
### Workforce Supports

- Number of educators statewide
- Educator wages by role over time

# New Dashboard Updates in February include:

1. New data on the percent of programs participating in Child Care Financial Assistance (CCFA)
2. New data on licensed Residential and Placement programs
3. Added region filters to all visuals
4. Added open/close trend line to Program Openings and Closings visual

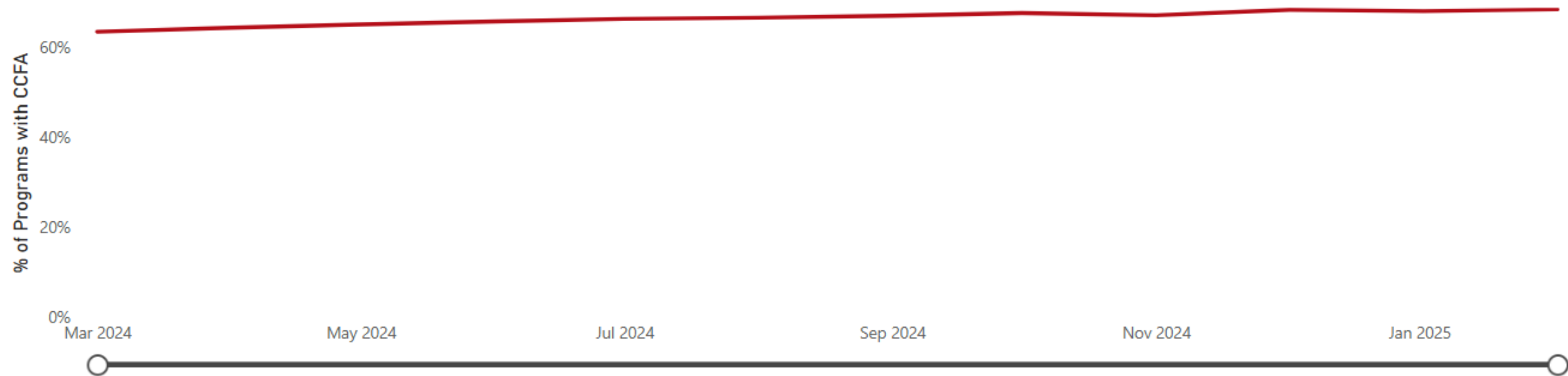
Click [here](#) to access the dashboard.



# Dashboard Snapshot: Program CCFA Participation Data

Since March 2024, 474 more programs are participating in the CCFA system, reflecting an increase from 64% to 69% of all licensed and funded providers.

% of Programs Accepting CCFA Contracts or Vouchers





# Child Care Financial Assistance (CCFA) Regulatory Changes



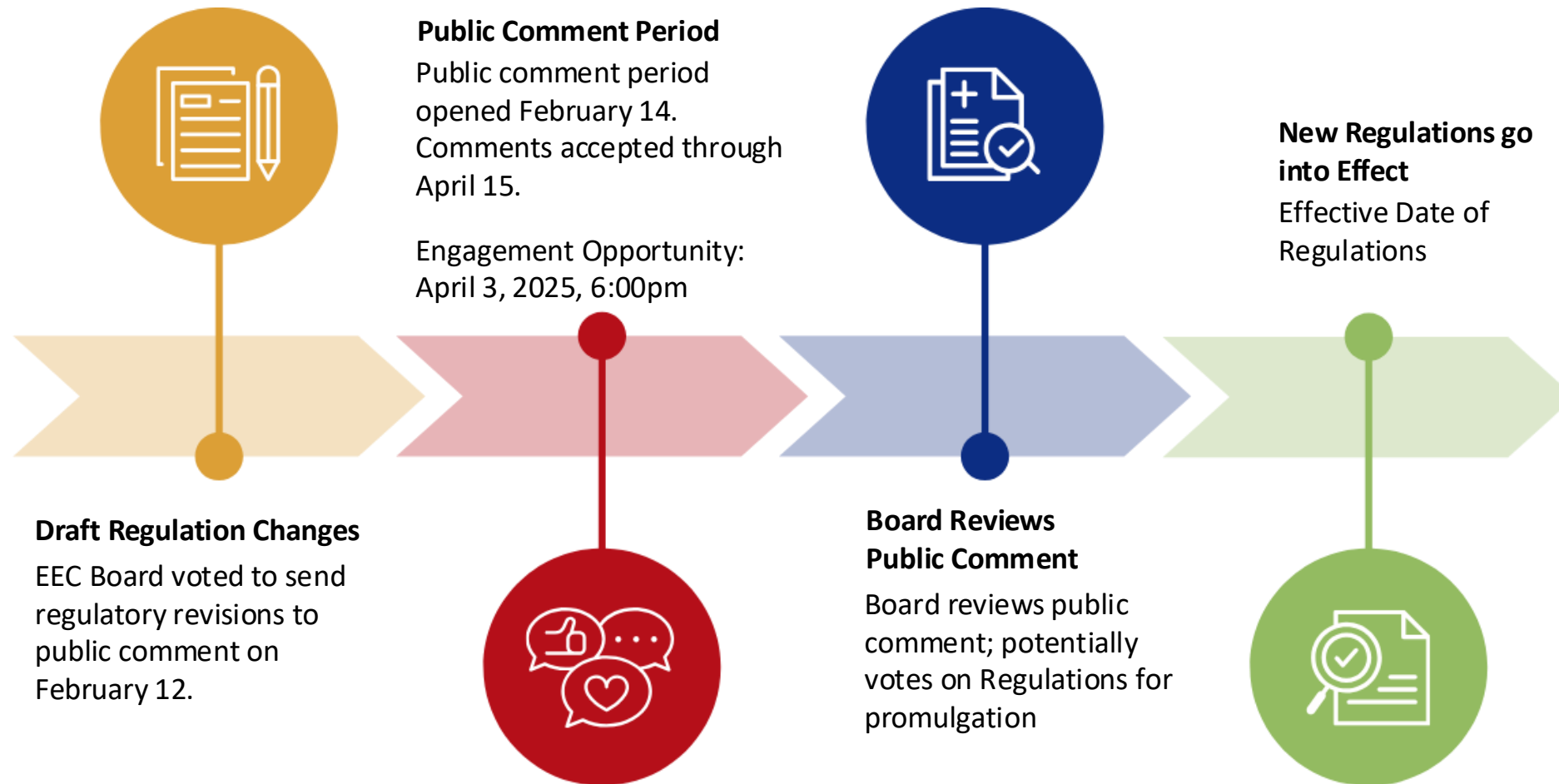
# Reason for Regulatory Changes

- The Board is charged with setting policies and regulations related to early education and care programs and services. G.L. c. 15D, § 3.
- The FY25 budget codified certain requirements for the Child Care Financial Assistance (CCFA) Program at G.L. c. 15D, § 13A, effective January 15, 2025.
- Based on the new statutory language, EEC is required to promulgate regulations necessary to implement Section 13A.
  - The promulgation of these regulations will enable EEC the ability to update Child Care Financial Assistance policies and procedures to implement the changes in Section 13A.

# Summary of Regulatory Changes

- Expand initial eligibility to families with incomes at and up to 85% of State Median Income (SMI) and allow the Department to go beyond 85% SMI if the federal government allocates additional funding to do so. Add priority access for families at or below 50% SMI.
- Codify existing priority access for staff working in early education and care programs, disability, families experiencing homelessness, young parents, and individuals facing domestic violence.
- Codify that CCFA does not count as income for purposes of disqualifying families for other state governmental assistance.
- Require the Department to annually review the CCFA program to streamline processes and paperwork, add technology, and expand outreach, particularly to non-English speaking families.

# Proposed CCFA regulation revisions timeline





# Preschool Development Grant Birth to Five

# Preschool Development Grant Birth Through Five






In 2022, EEC was awarded \$36 million in federal Preschool Development Grant (PDG) Birth Through 5 funding to support early education and care system building efforts and projects from January 2023 through December 2025.

## **Federal goals for this grant include:**

- Updating needs assessment and strategic plan
- More meaningfully engaging parents and providers in programs and policy
- Maximizing family choice and knowledge
- Building and supporting the workforce
- Expanding access to mixed delivery programs and services
- Improving overall quality
- Improving childrens' transitions into kindergarten



# PDG-Supported Project Status

Completed		Underway
 <b>FAMILY ACCESS</b>	<b>CCFA Reforms:</b> Regulation Revision; Contract Re-procurement; Case Tracking IT Improvements	<b>Launch Family Advisory Council</b>
 <b>WORKFORCE SUPPORT</b>	<b>New Educator Credential:</b> Design	<b>New Educator Credential:</b> Training Development, Implementation <b>IT Infrastructure:</b> Educator Portal, Learning Management System Apprenticeships
 <b>PROGRAM STABILITY</b>		<b>Family Child Care Pre-Licensing Support</b>
 <b>PROGRAM QUALITY</b>	<b>Curriculum Rubric</b> <b>Behavioral Health Supports:</b> Regional BH Specialists; STREET Initiative	<b>CQI Training and Toolkit</b> <b>CLASS Pilot</b> <b>Behavioral Health Supports:</b> Inclusion & Support Toolkit
 <b>AGENCY INFRASTRUCTURE</b>	<b>Early Childhood Needs Assessment</b>	<b>Child Care Management System Pilot</b> <b>2026-2030 EEC Strategic Action Plan</b>

# PDG-Supported Interagency Partnerships



**Massachusetts  
Department of  
Public Health**



**MASSACHUSETTS EXECUTIVE OFFICE OF  
LABOR & WORKFORCE DEVELOPMENT**



Literacy Screening;  
PK-K Transition Toolkit

Health and Safety Needs Assessment

Apprenticeship Support;  
Early Implementation Program Evaluation

STREET Initiative: Strategies for Trauma Responsive  
Early Educator Training



# Preschool Development Grant Birth to Five

## FAMILY ADVISORY COUNCIL DEVELOPMENT



# Purpose

The Family Advisory Council will be a link threading families, educators, and other stakeholders.

The Council will help build a more inclusive, responsive and effective early education system by:

- Informing policy and program decisions
- Elevating parents' voices and embedding an approach that partners with families in leadership spaces
- Help EEC optimize connection of high priority families with programming and resources

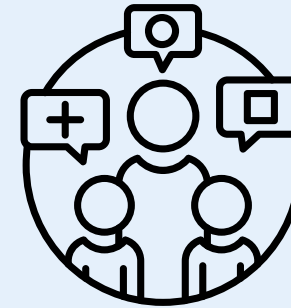


# Proposed Composition



## Membership

The council will be composed of diverse family representatives from across the Commonwealth, including parents, caregivers, and guardians of children currently enrolled in early education, residential, and out of school time programs.



## Representation

The council will strive for diverse representation based on factors like family structure, socioeconomic status, cultural background, language, and geographic location.

# Goals

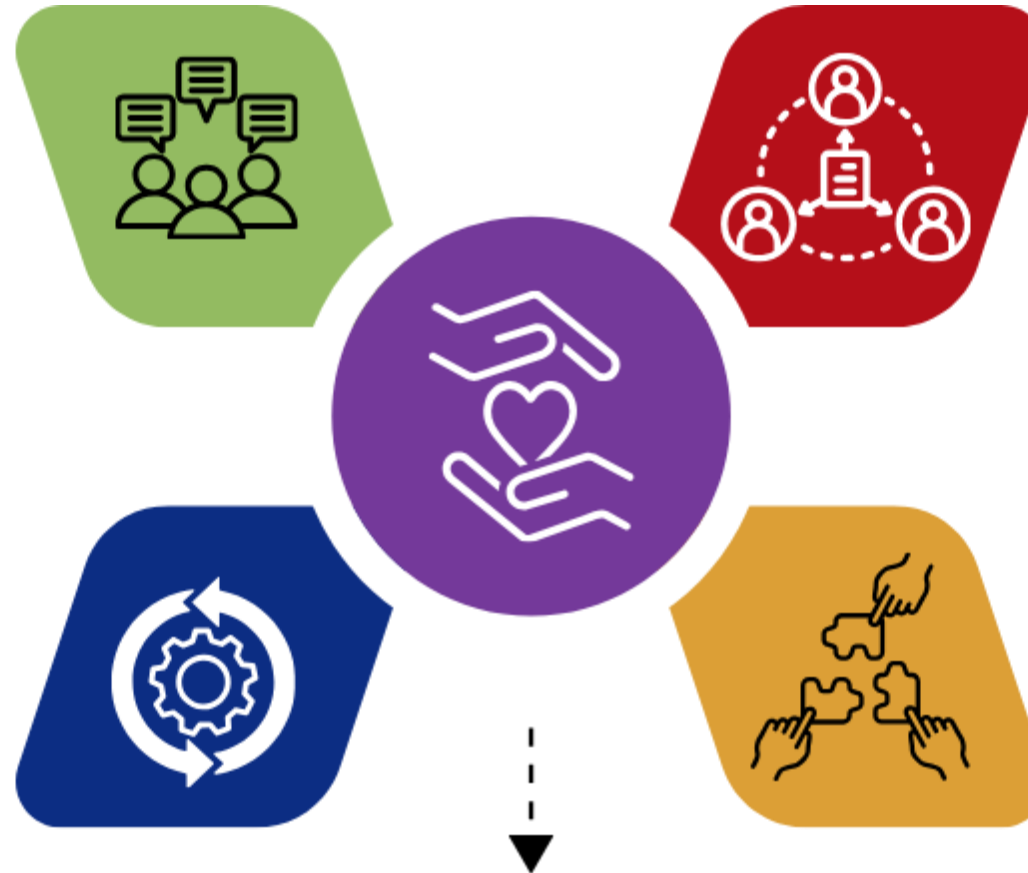
To provide a forum for families to offer input on EEC policies and programs at the state level

To promote family engagement in the decision-making process to improve mixed delivery system

To inform and advocate for state-level resource allocation that supports high-quality programming

To strengthen partnerships between families, providers, and state agencies

To identify the unique needs and challenges faced by diverse families in accessing and benefiting from early education



# Focus Areas

## Family Transitions

Scaffolding resource  
supports



## Language and culture

Supporting inclusion and  
connection efforts



**Birth through  
Adolescence programs**  
Access, user friendliness,  
and quality

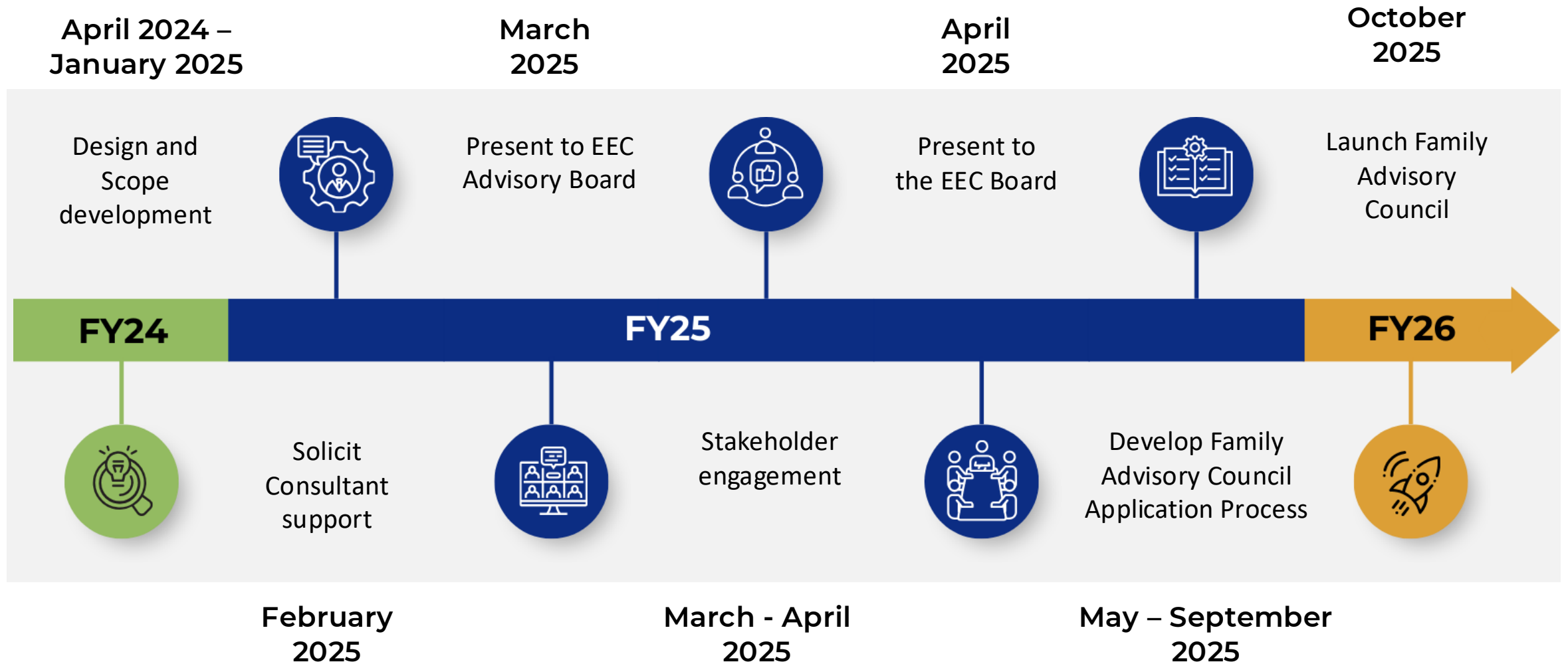


**Family Engagement**  
Strengthening  
Partnerships Framework



**EEC policies and procedures**  
Family friendly voice

# Timeline



# For More Information

Ayesha Rodriguez, Family Engagement Manager,  
[Ayesha.Rodriguez@mass.gov](mailto:Ayesha.Rodriguez@mass.gov)



# Preschool Development Grant Birth to Five

## EARLY CHILDHOOD NEEDS ASSESSMENT

# Early Childhood Family Needs Assessment

- Federally required to conduct a Needs Assessment
- EEC used by EEC as an opportunity to better understand the family experience
- Completed by research partners at MEF Associates and Tufts Interdisciplinary Education Research

## Goal 1

Understand the extent to which families access and use care and early education services

## Goal 2

Understand how and why families access and utilize care and early education services (or not)

## Goal 3

Understand the extent to which there may be variation in access and utilization

## Goal 4

Understand how care and early education systems be more responsive to families