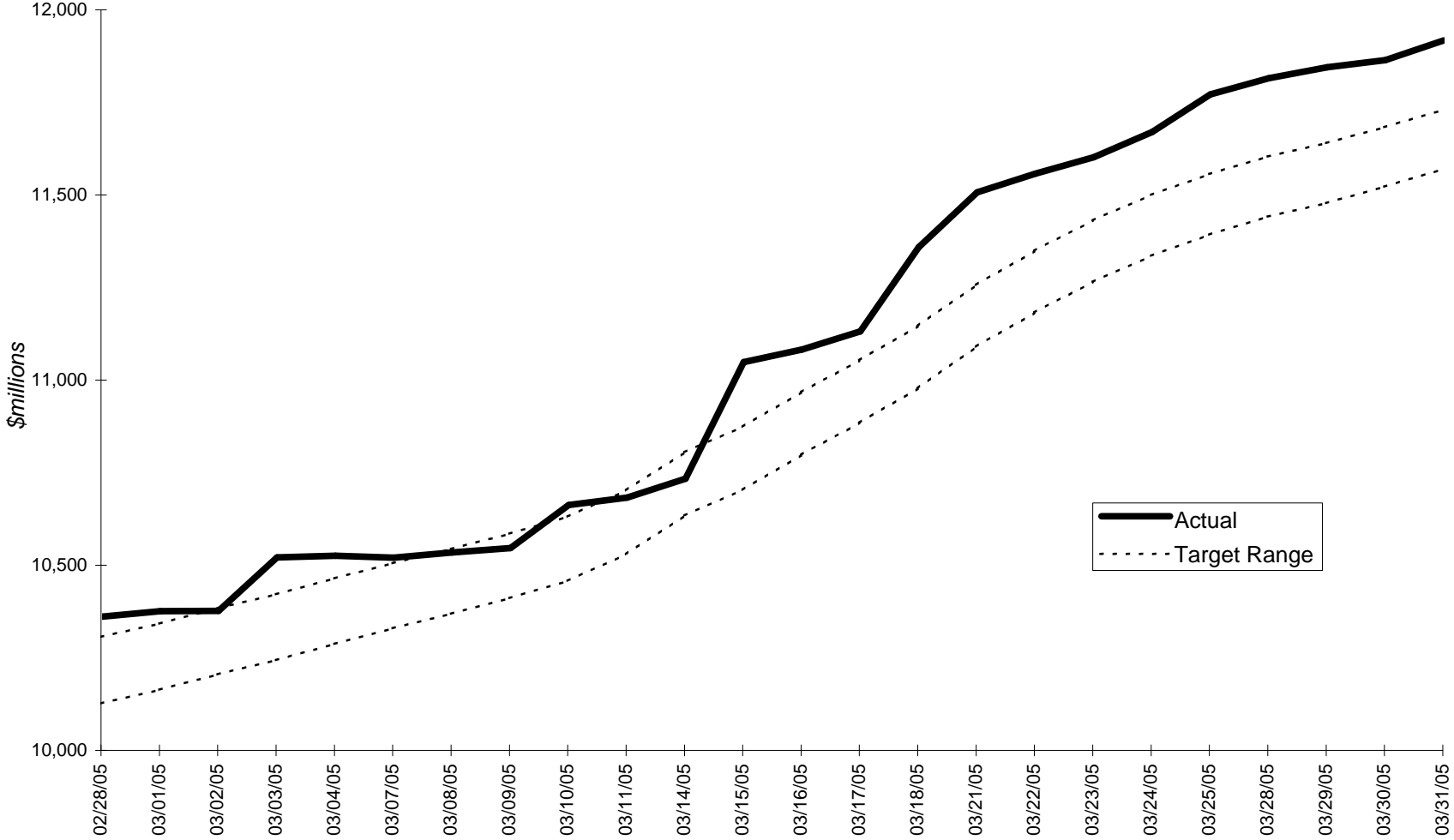


March 2005 Tax Collection Summary (in \$ millions)
(Preliminary as of 4/1/05)

	----- Month of March -----					----- FY05 Year-to-Date -----				
	3/05 Collections	3/05 v. 3/04 \$ Change	3/05 v. 3/04 Actual % Change	3/05 v. 3/04 Baseline % Change	3/05 \$ Above/(Below) 10/15 Benchmark (\$16.231 Billion)	3/05 YTD Collections	3/05 YTD \$ Change	3/05 YTD Actual % Change	3/05 YTD Baseline % Change	3/05 YTD \$ Above/(Below) 10/15 Benchmark (\$16.231 Billion)
Total Income	478	78	19.5%	13.0%	79	6,447	482	8.1%	7.0%	224
Income Withholding	669	57	9.2%	8.0%	29	5,830	242	4.3%	4.5%	48
Income Est Payments (Cash)	17	1	3.7%	3.7%	0	1,092	200	22.5%	14.1%	79
Income Returns/Bills	53	10	22.3%	23.2%	10	248	41	20.0%	19.9%	29
Income Refunds (Cash)	260	(12)	(4.4%)	2.6%	(40)	727	(0)	(0.0%)	0.7%	(64)
Sales & Use	281	(1)	(0.2%)	(1.1%)	(13)	2,881	113	4.1%	4.1%	(36)
Corporate & Business	643	75	13.3%	8.6%	23	1,244	44	3.7%	3.6%	7
All Other	155	34	28.4%	28.7%	34	1,341	120	9.8%	8.0%	67
Total Tax Collections	1,557	187	13.7%	9.6%	124	11,913	759	6.8%	6.0%	262

Note: Detail may not add to total due to rounding and other technical factors

FY2005 Year-to-Date Tax Revenue through March 31, 2005



YTD target range is based on 10/15/04 FY2005 estimate of \$16.231 billion (includes \$705 million in MBTA transfer funds)