



# Mashpee Wakeby Pond

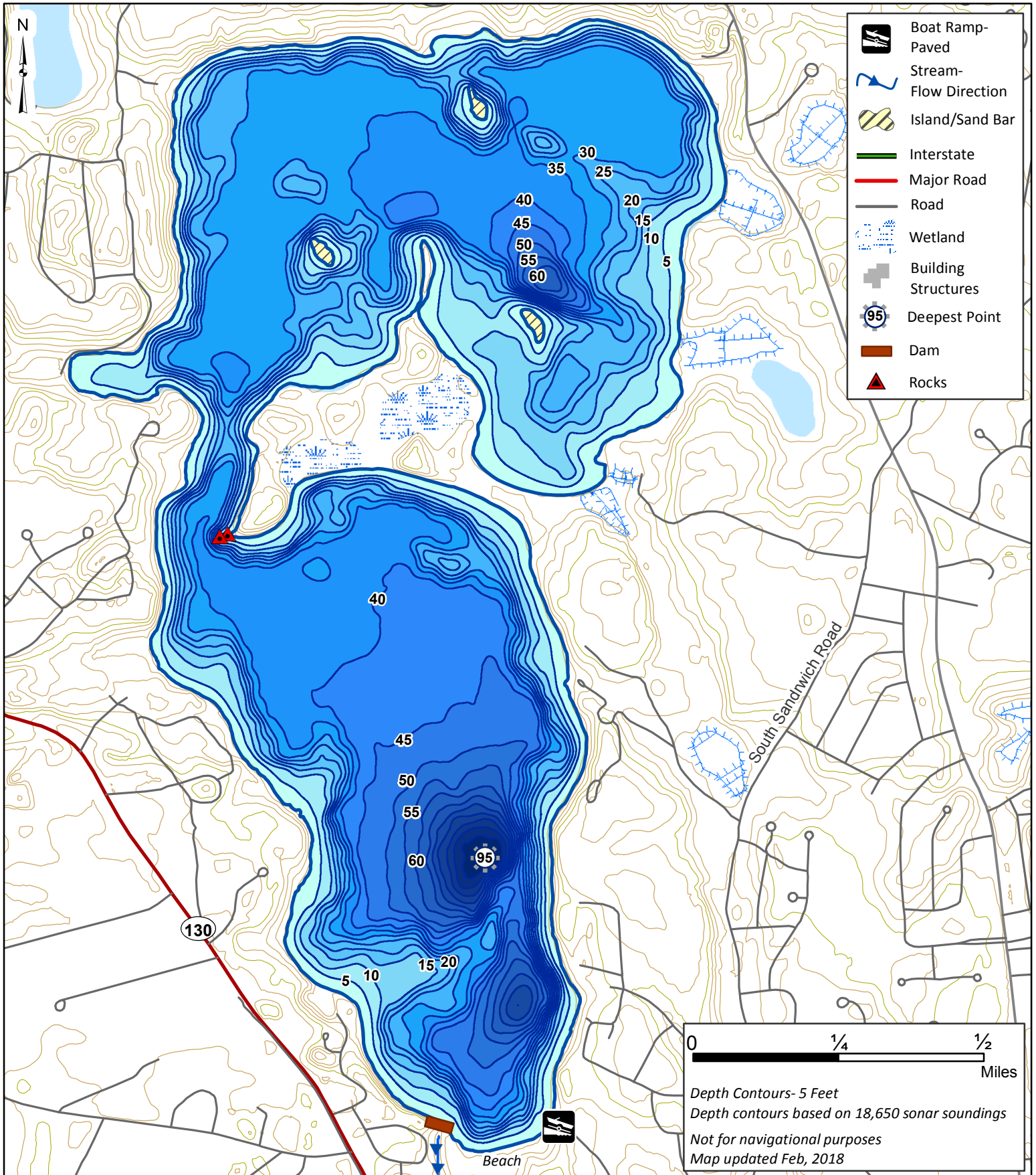
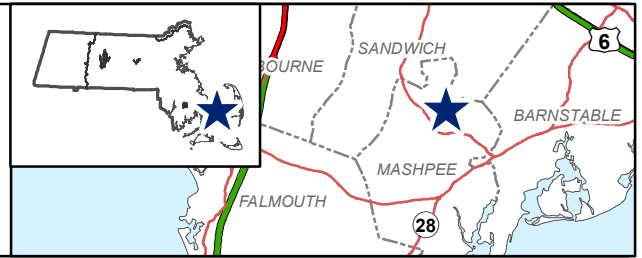
737 Acres

Mashpee

Cape Cod Watershed

Coordinates: 70°28'53.07"W 41°39'7.24"N

USGS Quad: SANDWICH/COTIUT





# Mashpee Wakeby Ponds, Mashpee/Sandwich

## General Information

Mashpee-Wakeby Ponds are two connected Great Ponds generally considered to be one large body of water covering 737 acres. Wakeby Pond is the northern basin and Mashpee Pond is the southern basin. The ponds are fed by groundwater and drain to the Mashpee River. Average depth is 30 feet and maximum depth is 95 feet. Transparency is only fair, extending to 8.5 feet, and aquatic vegetation is scant to moderate. The bottom is composed primarily of rubble and gravel, with some sandy areas. The 5.9 miles of shoreline is heavily developed with houses, town beaches, and summer camps. A large undeveloped peninsula (Lowell Holly reservation, managed by the Trustees of Reservations) separates the two ponds and three undeveloped islands (Jefferson, Keith and Cleveland) are found in Wakeby Pond.

## Recreational Access

A large paved boat ramp with a 30-vehicle parking lot is managed by the town of Mashpee. It is located on Fisherman's Landing Road, to the north of Route 130, just after its intersection with Great Neck Road (70°28'53.07"W 41°39'7.24"N). During the summer months, the town of Mashpee collects a parking fee to help defer maintenance costs.

## Fish Populations

The following fish species were found during MassWildlife surveys: Largemouth Bass, Smallmouth Bass, Chain Pickerel, Yellow Perch, White Perch, Pumpkinseed, White Catfish, Alewife, Blueback Herring, Brown Bullhead, Banded Killifish, Tessellated Darter, White Sucker, and Golden Shiner.

## Fishing

Mashpee-Wakeby supports an outstanding fishery. It is stocked annually in the spring and fall with Brook, Brown and Rainbow Trout. Good populations of Largemouth Bass and Smallmouth Bass are avidly sought during the numerous bass tournaments held at the pond. All gamefish in the pond display good growth rates due to the abundant sea-run herring which travel up the Mashpee River from Ponponesset Bay and Nantucket Sound. The Ponds have produced Brook Trout, Brown Trout, Brown Bullhead, Chain Pickerel, Largemouth Bass, Smallmouth Bass, Yellow Perch, White Catfish, and Sunfish that meet minimum sizes for recognition by the Freshwater Sportfishing Awards Program.

Other nearby ponds include Santuit Pond, Peters Pond, Snake Pond and Pimlico Pond.

## Useful Links:

[Get your Fishing License](#)

[Freshwater Fishing](#)

[Trout Stocking Information](#)

[Freshwater Sportfishing Awards Program](#)

## Learn more:

[Mass.gov/MassWildlife](https://mass.gov/MassWildlife)

## Connect with us:

[Facebook.com/MassWildlife](https://facebook.com/MassWildlife)

## Your local

### MassWildlife office:

195 Bournedale Road  
Buzzards Bay, MA 02532  
(508) 759-3406

## STOP AQUATIC HITCHIKERS!

Prevent the transport of nuisance species.  
Clean all recreational equipment.  
[ProtectYourWaters.net](https://ProtectYourWaters.net)

Updated: 2018