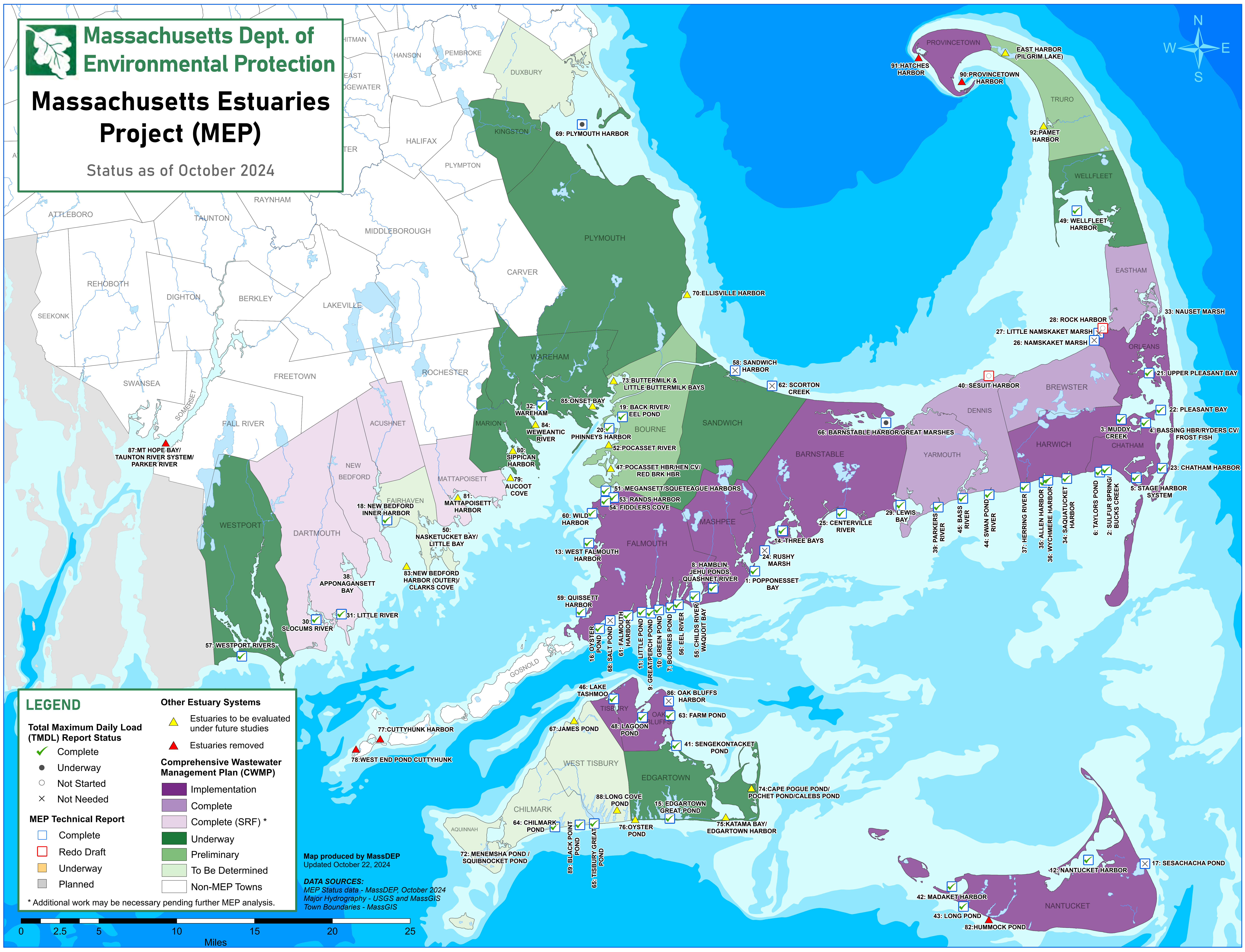




Massachusetts Dept. of Environmental Protection

Massachusetts Estuaries Project (MEP)

Status as of October 2024



LEGEND

Total Maximum Daily Load (TMDL) Report Status

- ✓ Complete
- Underway
- Not Started
- ✕ Not Needed

MEP Technical Report

- Complete
- Redo Draft
- Underway
- Planned

Other Estuary Systems

- ▲ Estuaries to be evaluated under future studies
- ▲ Estuaries removed

Comprehensive Wastewater Management Plan (CWMP)

- Implementation
- Complete
- Complete (SRF) *
- Underway
- Preliminary
- To Be Determined
- Non-MEP Towns

Map produced by MassDEP
Updated October 22, 2024

DATA SOURCES:
MEP Status data - MassDEP, October 2024
Major Hydrography - USGS and MassGIS
Town Boundaries - MassGIS

