

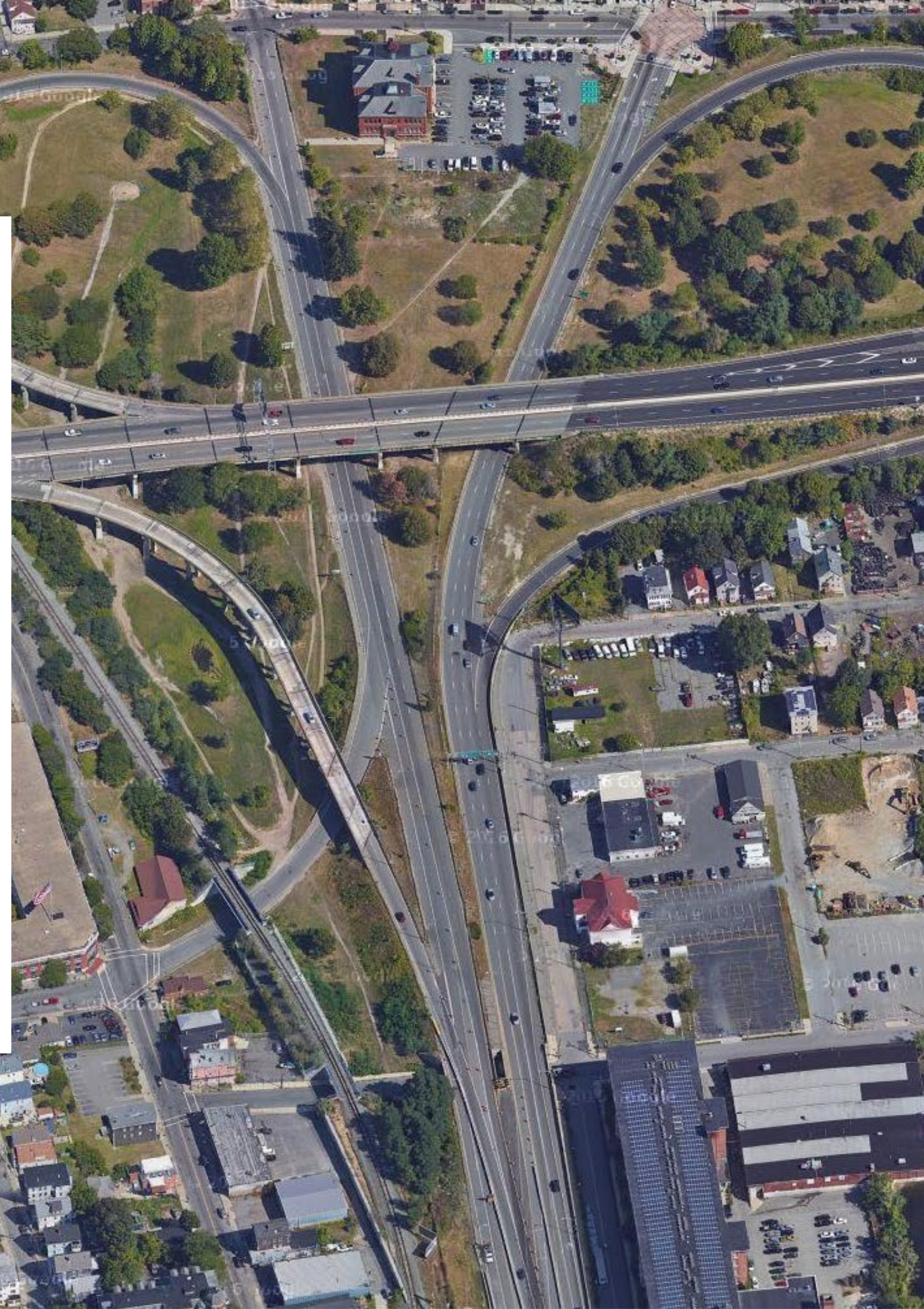


New Bedford I-195/Route 18 Interchange Rehabilitation Project

*Phase 2 Traffic Shifts
Stakeholder Briefing*

August 22, 2025 | 1:00 p.m.

Project File No. 606527



Agenda

- 01 Introductions
- 02 Project Background
- 03 Phase 1 & 2 Construction
- 04 Construction Impacts
- 05 Next Steps
- 06 Questions & Answers



Project Team

MassDOT

- Valerie Kilduff, Project Manager
- Gareth Saunders, Legislative Affairs
- Alan Andrade, Deputy District Highway Director
- Michael McGrath, District Construction Engineer
- Dan Mastrangelo, Assistant District Construction Engineer

DWW SPS JV

- Erin White, Assistant Construction Project Manager

HNTB

- Jonathan Kapust, Design Project Manager



Project Background

Project Background

- Goal is to address poor conditions on aged structure
 - Safety and mobility improvements to the bridges and roadways, and constructing a noise barrier, new landscaped park, shared use path, and skate park for community benefit
- Two raised sections of I-195 will be rebuilt. I-195 westbound will be demolished and rebuilt from 2025 to 2027. I-195 eastbound will be demolished and rebuilt from 2027 to 2029
- Currently three months into a five-year construction project; anticipated to be completed in 2030
- Project type: Design-Build

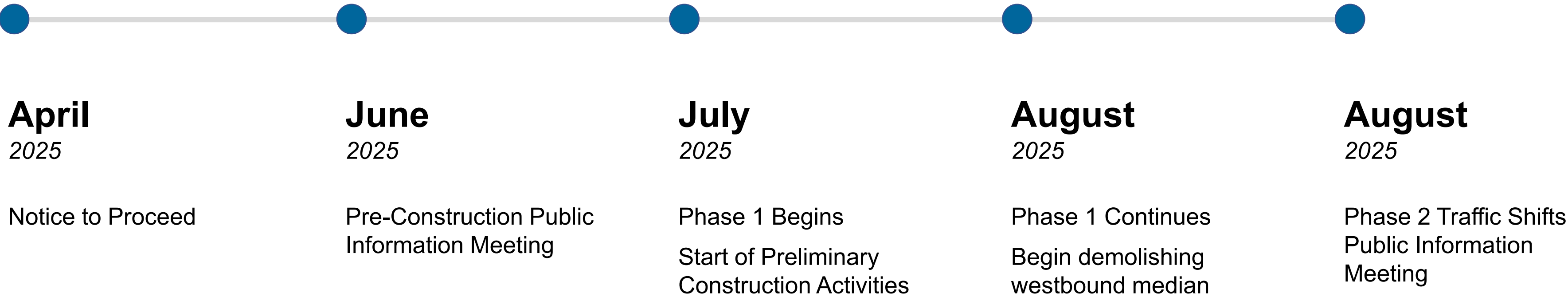


For more information please visit: <https://www.mass.gov/route-i-195-to-route-18-interchange-rehabilitation-in-new-bedford>

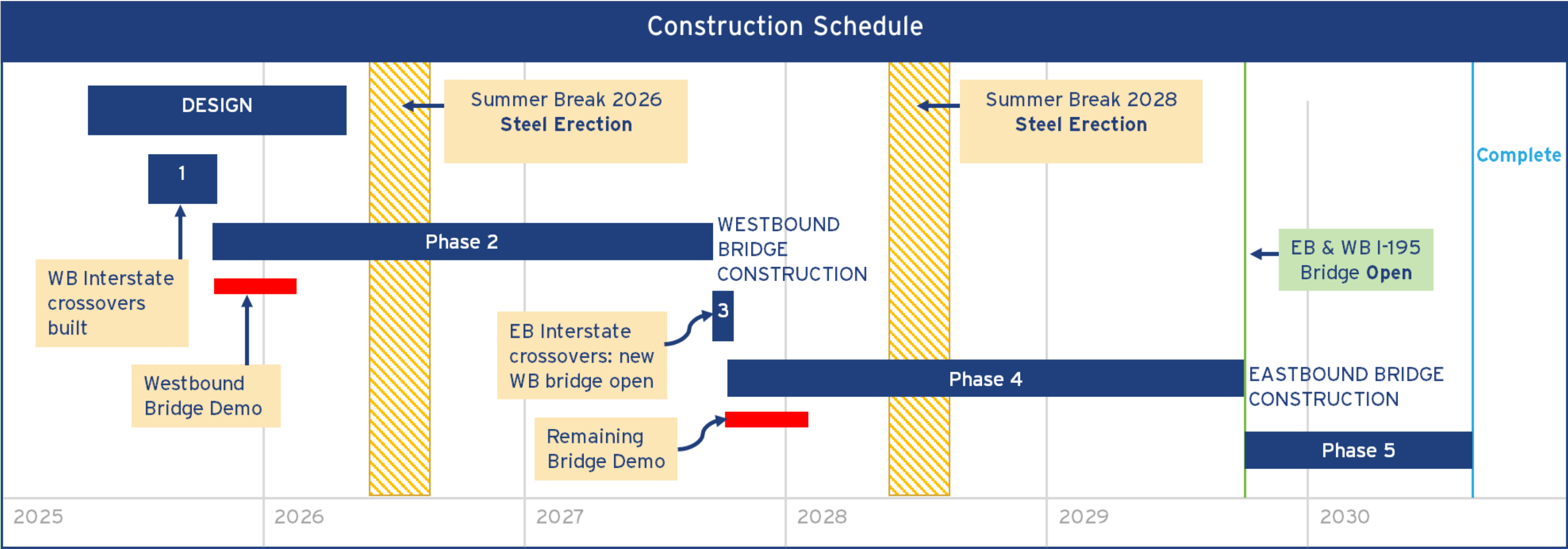
Project Area



Update Since Notice to Proceed

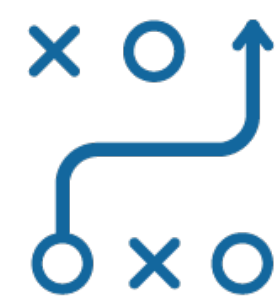


Project Timeline and Staging




We Are Here


**Tentative
next PIM**



Phase 1 & 2 Construction

Phase 1

PHASE 1: Summer 2025 to Fall 2025

- Demolish existing median on I-195 bridges.
- Pave the I-195 median and construct westbound crossovers.
- Shift I-195 westbound traffic to temporary configuration on existing I-195 viaduct.

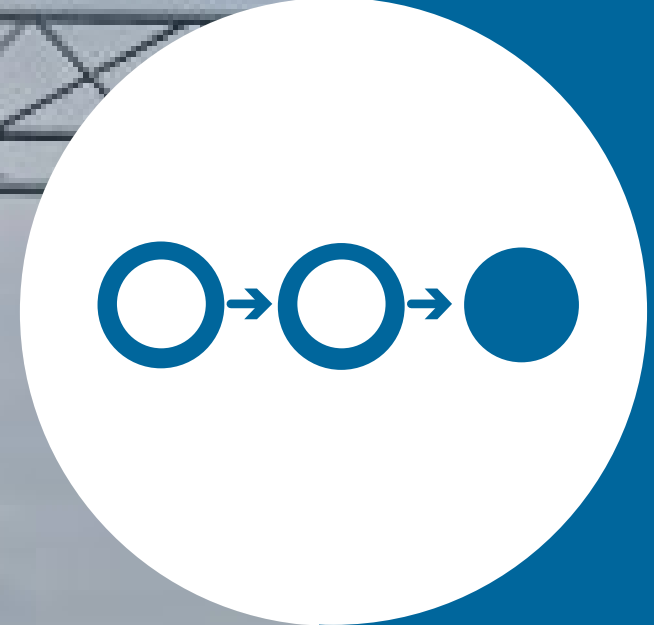


Phase 2

PHASE 2: Fall 2025 to Summer 2027

- Demolish existing I-195 westbound viaduct superstructure, retaining wall, and westbound ramps.
- Construct I-195 westbound and ramp viaduct structure, retaining walls, I-195 eastbound footings, and columns.
- Construct Route 18 northbound, ramps, and stormwater basins.

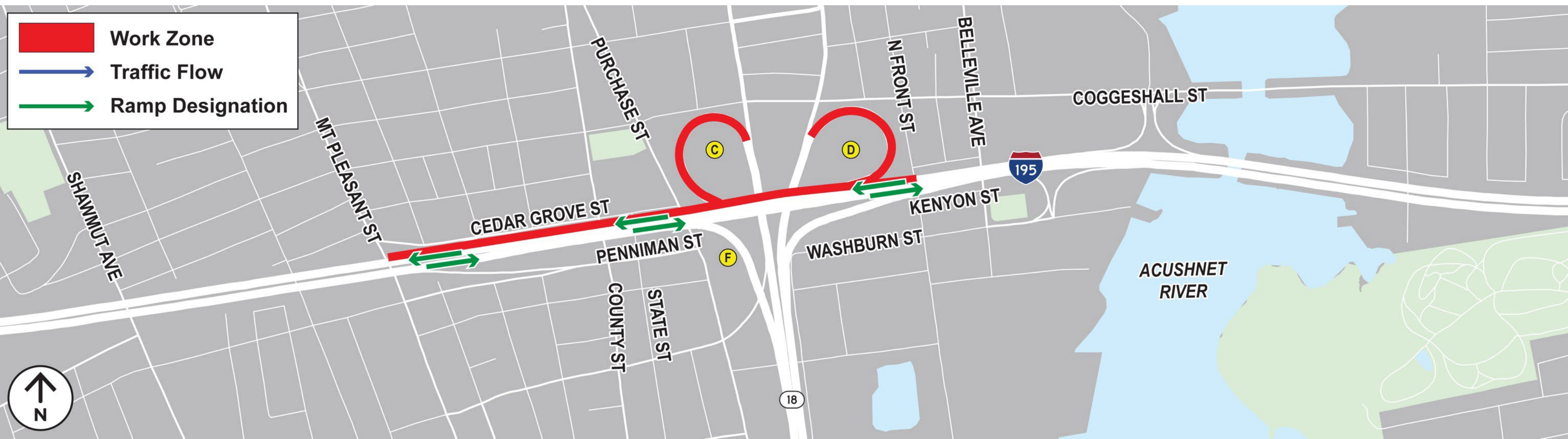




Construction Impacts

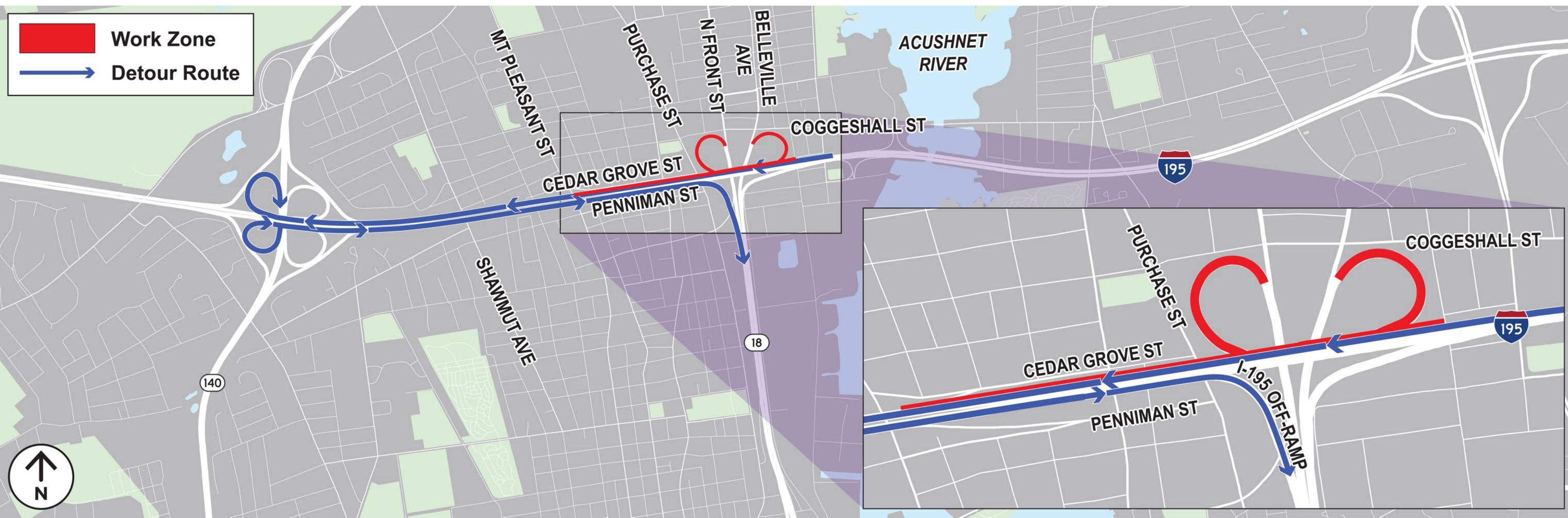
Phase 2 Traffic Flow

- I-195 westbound traffic will be shifted to the eastbound side
- Construction on the I-195 westbound, westbound Exit 26 Ramp, and westbound On-Ramp
- Closures begin on September 8, 2025, and are expected to continue through Fall 2027
- No long-term closures scheduled for other westbound ramps



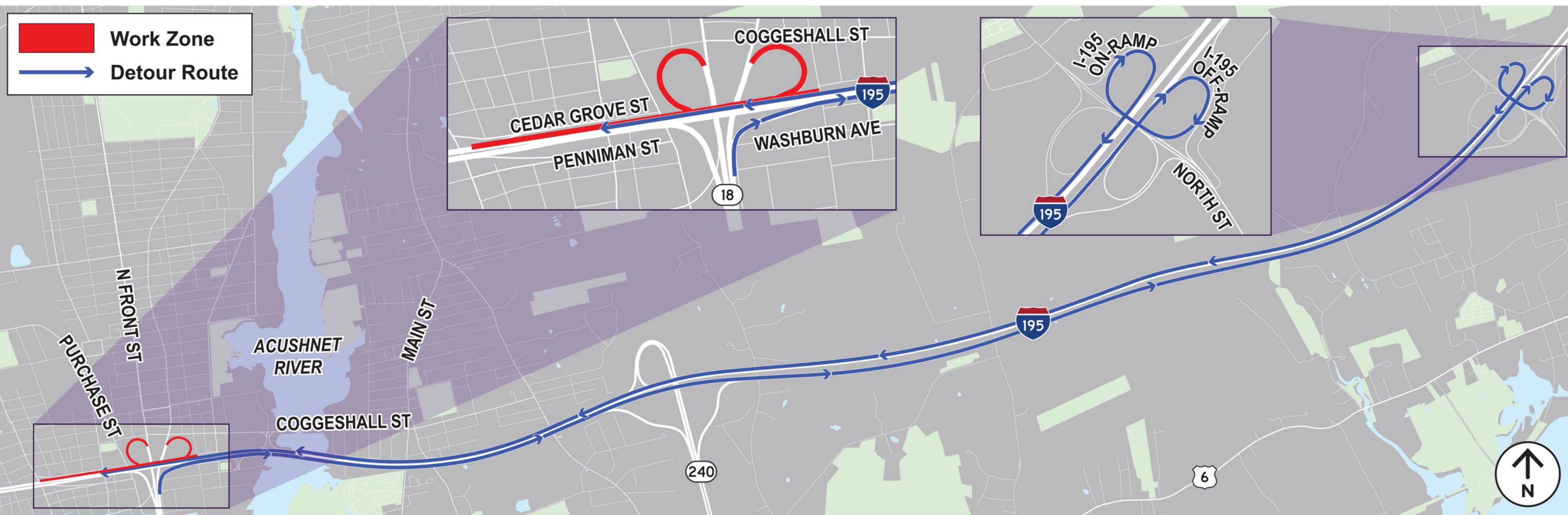
Ramp C Detour (I-195 West to Route 18 South)

- Drivers will continue to travel along I-195 westbound to Exit 24
- At Exit 24, they will use the clover interchange to connect to I-195 eastbound
- Drivers will take eastbound Exit 26 Ramp to connect to Route 18 Southbound



Ramp D Detour (Route 18 North to I-195 West)

- Drivers will merge on to I-195 eastbound
- At Exit 31, they will use the clover interchange to connect to I-195





**How Will We
Keep You
Informed?**

Resources For Regional Drivers

- Real-time traffic information posted on I-195
- To check real-time traffic conditions before your commute, visit Mass 511:
<https://mass511.com/>
- To view a graphic for each detour, visit the traffic detour page on the Project website
- Project updates and traffic advisories sent to project email subscribers and posted to the project website
- Be aware: drivers must reduce their speed when traveling through the work zone

Ongoing Community Engagement

- Community Pop-ups
- Materials translated in English, Spanish, Portuguese, and Cape Verdean Kriolu
- Fact Sheet and Frequently Asked Questions (FAQ) available on the project website
- Public Meeting Notices published in local newspapers and distributed door-to-door to abutters
- Weekly traffic advisories and bi-weekly construction look-aheads sent to project subscribers
- Coordination with New Bedford and adjacent communities to reach residents through social media channels

How to Connect with the New Bedford I-195/Route 18 Interchange Rehabilitation Project

- Email the project team with feedback and questions:

i195route18newbedford@dot.state.ma.us

- Visit the project website for more information:

www.mass.gov/route-i-195-to-route-18-interchange-rehabilitation-in-new-bedford

- Call the project hotline: (508) 441-4532
- Scan the QR code and sign up for project updates:





Questions and Answers



Thank You

***New Bedford I-195/Route
18 Interchange
Rehabilitation Project***

August 22, 2025 | 1:00 p.m.

Project File No. 606527

Project email: i195route18newbedford@dot.state.ma.us

