



MASSDOT FULLY ACCESSIBLE VEHICLE GUIDE

AN OVERVIEW OF ACCESSIBLE VEHICLE SPECIFICATIONS

September 2023

INTRODUCTION

The state’s Mobility Assistance Program (MAP) and the FTA’s Section 5310 Program provide capital funding to transit agencies, councils on aging, and private non-profits for the purchase of vehicles and related equipment to be used in the provision of transportation services to older adults and individuals with disabilities of any age.

Through these two programs, MassDOT provides funding for accessible vehicles that meet a set of minimum standards, described below. MassDOT pays an 80% share of the cost of the “base vehicle”. This refers to all parts of the vehicle required to meet the minimum standards described in this document, but none of the additional features that may be present. Receiving agencies may elect to purchase vehicles with additional features, but these options must be fully paid for by that agency.

MassDOT retains the vehicle title and is the lien holder for the duration of the vehicle’s useful life. After this period has elapsed, the agency can work with MassDOT to transfer the title to them in accordance with MassDOT’s disposition policy.

Below are type-specific standards for each of MassDOT’s accessible vehicles. Please be aware that the listed vehicle costs are just estimates; actual cost will vary depending on the Producer Price Index (PPI) at the time the order is placed.¹

TYPES OF VEHICLES

Vehicle brand and configuration are determined by MassDOT during the State’s procurement process. Current contract dealers, manufacturers, and vehicle types are listed below.

Vehicle Type	Dealer	Vehicle Model
Type A	Creative Bus	Chrysler BraunAbility
Type A – electric	Creative Bus	Ford E-Transit 350
Type E	Coach & Equipment	Ford E-350 Cutaway

¹ RFR # BD-23-1 030-QTI 00-0T | 00-81603

Type E2a	Coach & Equipment	Ford E-350 Cutaway
Type E2b	Coach & Equipment	Ford E-350 Cutaway
Type Ca	Coach & Equipment	Ford E-450 Cutaway
Type Cb	Coach & Equipment	Ford E-450 Cutaway
Type Da	Coach & Equipment	Ford E-450 Cutaway
Type Db	Coach & Equipment	Ford E-450 Cutaway
Type LF	Creative Bus	New England Wheels Frontrunner

VEHICLE SPECIFICATIONS

Each type of vehicle has a different set of specifications, but certain standards apply across all vehicles:

- “Passenger Capacity” below refers to the maximum number of ambulatory passengers capable of being transported in the vehicle. Wheelchair passengers may take up the space of two or more ambulatory passengers, so a vehicle may be full even though it contains fewer people than its maximum passenger capacity.
- All vehicles must have a rear emergency door.

OPTIONAL FEATURES

Receiving agencies that wish to purchase additional vehicle features may do so at their own expense, in accordance with the approved RFR. Options that may be upgraded include:

- ITS and communications (automatic vehicle locators, fareboxes, etc.)
- Cameras (for reversing, and interior and exterior for driver and passenger safety)
- Electronic destination signs (front and curbside)
- Collision warning and avoidance system
- Passenger amenities (seating, grab handles, grab rails, etc.)
- Driver amenities (seating, cruise control, etc.)
- Paint scheme/details (base vehicle is white with vinyl striping)
- Additional spare tires
- Bike racks

The costs of optional features range from a few hundred dollars (such as for grab handles/grab rails) to a few thousand dollars (such as for a bike rack).

For a full list of available options and pricing, please contact us using the information below.

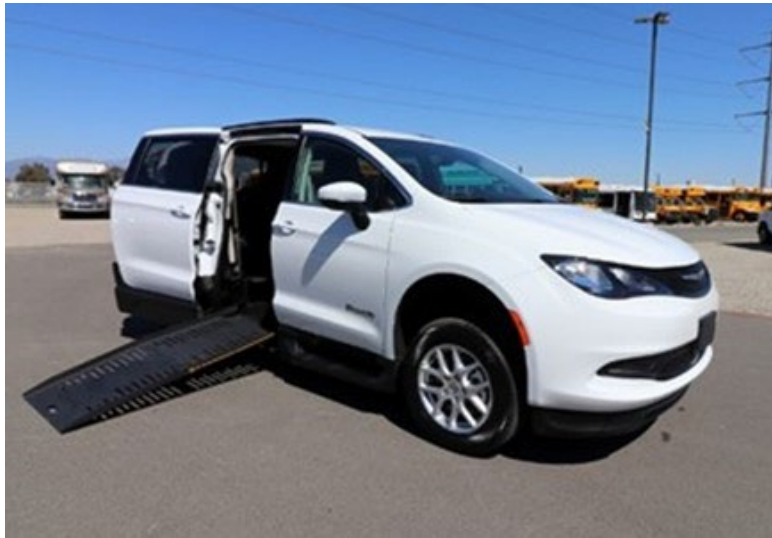
CONTACT INFORMATION

Thank you for your interest in accessible vehicles through MassDOT's Community Transit Grant Program! If you have any questions, please contact:

Rachel Fichtenbaum
Manager of Grant Programs &
Mobility Management
MassDOT Rail & Transit Division
Rachel.L.Fichtenbaum@dot.state.ma.us
10 Park Plaza, Suite 4160
Boston, MA 02116
(857) 368-8584

Stefan Cejic
Asset Management Coordinator
MassDOT Rail & Transit Division
Stefan.A.Cejic@dot.state.ma.us
10 Park Plaza, Suite 4160
Boston, MA 02116
(857) 368-8691

TYPE A



Minivan style vehicle with one or two wheelchair positions and electronic accessibility ramp. The vehicle seats six ambulatory passengers, four ambulatory passengers and one wheelchair position, or three ambulatory passengers and two wheelchair positions.

Capacity: 6-passenger

Body Design: Purpose-Built (non-conversion)

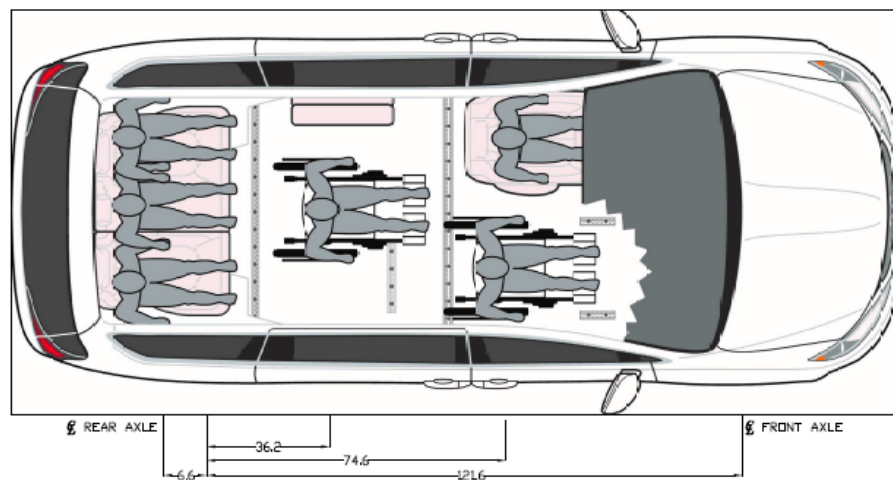
Wheelchair Accommodation: Two positions Max.

Driver's License Req.: Class D

Useful Life: 8 Years or 100,000 miles

Other Fuel Options: N/A

	3.7L Gas Option
Total Cost	\$78,604
80% Split	\$62,883.20
20% Split	\$15,720.80



TYPE A – ELECTRIC



Medium-roof van, single rear wheel, with rear wheelchair lift. The vehicle seats four ambulatory passengers and two wheelchair positions. Comes with a wall charger, 120V/240V mobile power cord, and an on-board charger (10.5 kW out/11.3 kW in).

Capacity: 6-passenger

Body Design: single rear wheel

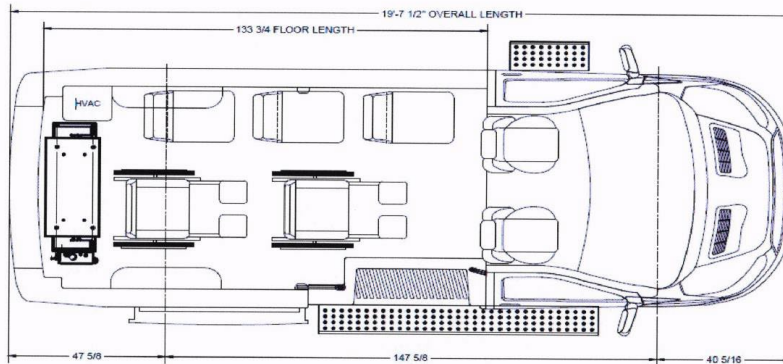
Wheelchair Accommodation: Two wheelchair positions

Driver's License Req.: Class D

Useful Life: 8 Years or 100,000 miles

Other Fuel Options: Wall Charger and 120V/240V Mobile Power Cord. On Board Charger 10.5 kW out/11.3 kW in

	EV Option
Total Cost	\$105,698
80% Split	\$ 84,558.40
20% Split	\$21,139.60



TYPE E



Note: Skins and lettering depicted in picture are options that carry an additional cost.

Raised-roof “body-on-chassis cutaway,” single rear wheel, with wheelchair lift. The vehicle seats eight ambulatory passengers, six ambulatory passengers and one wheelchair position, or four ambulatory passengers and two wheelchair positions.

Capacity: 8-passenger

Body Design: Body-on-chassis, single rear wheel

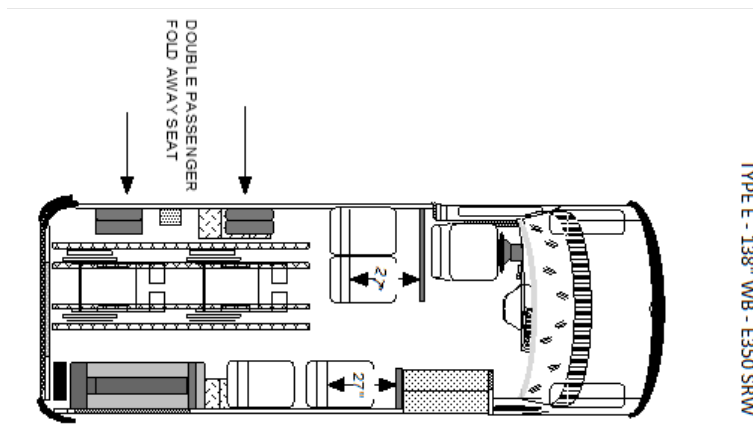
Wheelchair Accommodation: Two or more wheelchair positions

Driver’s License Req.: Class D

Useful Life: 8 Years or 100,000 miles

Other Fuel Options: N/A

	Gas Option
Total Cost	\$106,000
80% Split	\$84,800
20% Split	\$21,200



TYPE E2A



Note: Skins and lettering depicted in picture are options that carry an additional cost.

Raised-roof “body-on-chassis cutaway,” dual rear wheel, with wheelchair lift. The vehicle seats up to 12 ambulatory passengers, 10 ambulatory passengers and one wheelchair position, eight ambulatory passengers and two wheelchair positions, or three ambulatory passengers and three wheelchair positions.

Capacity: 12-passenger

Body Design: Body-on-chassis, dual rear wheel

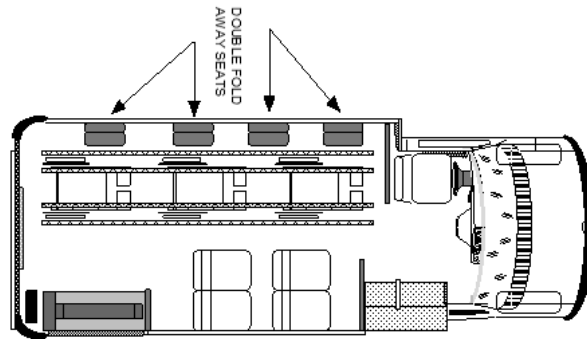
Wheelchair Accommodation: Two or more wheelchair positions

Driver’s License Req.: Class D

Useful Life: 8 Years or 100,000 miles

Other Fuel Options: CNG and Propane available (RTAs only), if interested please contact MassDOT for pricing information.

	Gas Option
Total Cost	\$116,700
80% Split	\$93,360
20% Split	\$23,340



TYPE E2a - 158" WB - E350

TYPE E2B



Note: Please note that the vehicle's exterior is the same as the E2A. Skins and lettering depicted in picture are options that carry an additional cost.

Raised-roof “body-on-chassis cutaway,” dual rear wheel, with wheelchair lift. The vehicle seats up to 12 ambulatory passengers or 10 ambulatory passengers and two wheelchair positions.

Capacity: 12-passenger

Body Design: Body-on-chassis, dual rear wheel

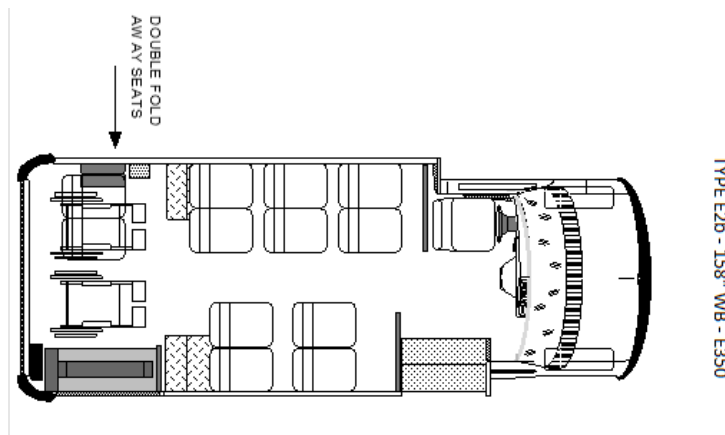
Wheelchair Accommodation: Two or more wheelchair positions

Driver's License Req.: Class D

Useful Life: 8 Years or 100,000 miles

Other Fuel Options: CNG and Propane available (RTAs only), if interested please contact MassDOT for pricing information.

	Gas Option
Total Cost	\$111,000
80% Split	\$88,800
20% Split	\$22,200



TYPE CA



Note: Skins and lettering depicted in picture are options that carry an additional cost.

Raised-roof “body-on-chassis cutaway,” dual rear wheel, with wheelchair lift. The vehicle seats up to 14 ambulatory passengers, 12 ambulatory passengers and two wheelchair positions, 10 ambulatory passengers and three wheelchair positions, or six ambulatory passengers and four wheelchair positions.

Capacity: 14-passenger

Body Design: Minibus design

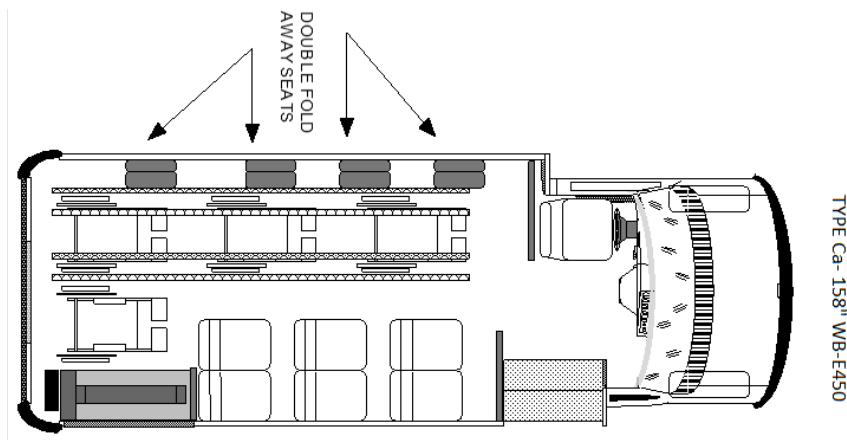
Wheelchair Accommodation: Three or more wheelchair positions

Driver’s License Req.: Class D

Useful Life: 8 Years or 150,000 miles

Other Fuel Options: CNG and Propane available (RTAs only), if interested please contact MassDOT for pricing information.

	Gas Option
Total Cost	\$121,000
80% Split	\$96,800
20% Split	\$24,200



TYPE CB



Note: Please note that the vehicle's exterior is the same as the CA. Skins and lettering depicted in picture are options that carry an additional cost.

Raised-roof "body-on-chassis cutaway," dual rear wheel, with wheelchair lift. The vehicle seats up to 14 ambulatory passengers, or 12 ambulatory passengers and two wheelchair positions.

Capacity: 14-passenger

Body Design: Minibus design

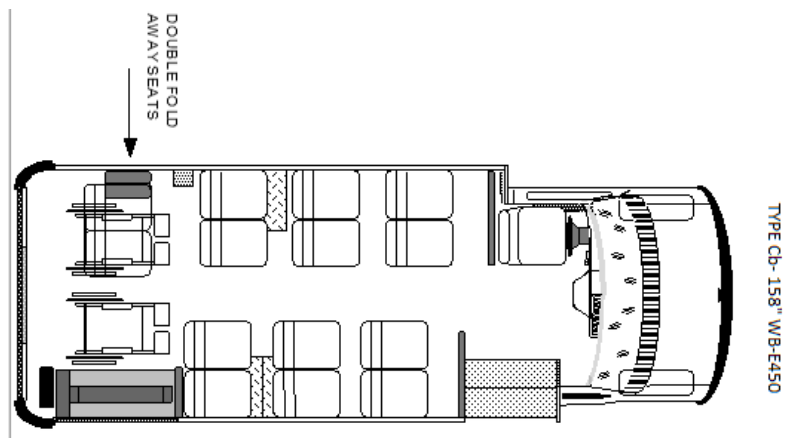
Wheelchair Accommodation: Three or more wheelchair positions

Driver's License Req.: Class D

Useful Life: 8 Years or 150,000 miles

Other Fuel Options: CNG and Propane available (RTAs only), if interested please contact MassDOT for pricing information.

	Gas Option
Total Cost	\$113,500
80% Split	\$90,800
20% Split	\$22,700



TYPE DA



Raised-roof “body-on-chassis cutaway,” dual rear wheel, with wheelchair lift. The vehicle seats up to 16 ambulatory passengers and two wheelchair positions, 14 ambulatory passengers and three wheelchair positions, or 10 ambulatory passengers and four wheelchair positions.

Capacity: 16-passenger

Body Design: Minibus design

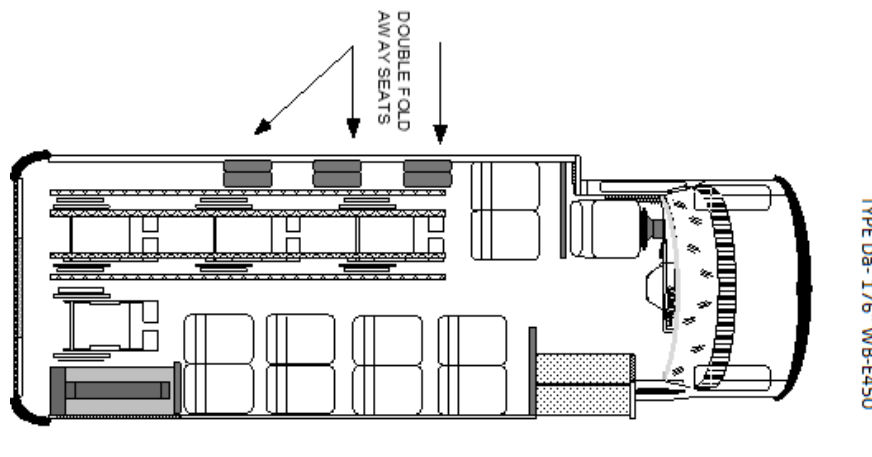
Wheelchair Accommodation: Three or more wheelchair positions

Driver’s License Req.: Commercial Driver’s License (CDL)

Useful Life: 10 Years or 150,000 miles

Other Fuel Options: CNG and Propane available (RTAs only), if interested please contact MassDOT for pricing information.

	Gas Option
Total Cost	\$124,000
80% Split	\$99,200
20% Split	\$24,800



TYPE DB



Note: Please note that the vehicle's exterior is the same as the DA

Raised-roof "body-on-chassis cutaway," dual rear wheel, with wheelchair lift. The vehicle seats up to 16 ambulatory passengers and two wheelchair positions.

Capacity: 16-passenger

Body Design: Minibus design

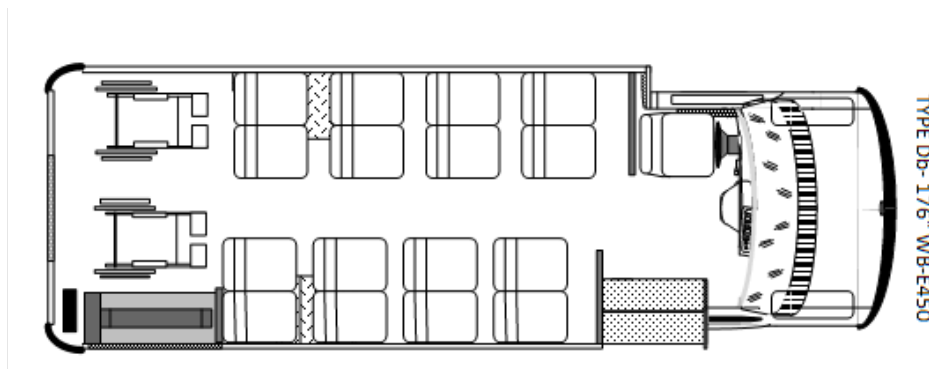
Wheelchair Accommodation: Three or more wheelchair positions

Driver's License Req.: Commercial Driver's License (CDL)

Useful Life: 10 Years or 150,000 miles

Other Fuel Options: CNG and Propane available (RTAs only), if interested please contact MassDOT for pricing information.

	Gas Option
Total Cost	\$116,000
80% Split	\$92,800
20% Split	\$23,200



TYPE LF (LOW FLOOR)



Raised-roof “body-on-chassis cutaway,” dual rear wheel with electronic accessibility ramp. The vehicle seats up to 14 ambulatory passengers and has 2 wheelchair positions.

Capacity: 14-passenger

Body Design: Minibus design

Wheelchair Accommodation: Two wheelchair positions

Driver’s License Req.: Class D

Useful Life: 8 Years or 150,000 miles

Other Fuel Options: N/A

	Gas Option
Total Cost	\$186,656
80% Split	\$149,325
20% Split	\$37,331

