



Design Public Hearing

West Roxbury Parkway over MBTA RR Bridge Replacement Project

Virtual | Wednesday, January 11, 2023 | 6:00 P.M.

Project File No. 606902



Zoom Hearing Controls



- Ask a question and share comments



- Raise your hand - *9 for users dialing in and Alt + Y to raise your hand



- If you are unable to access the internet or are having technical problems, please call into the meeting at [1.305.224.1968], Webinar ID: [874 1460 4481]



Live Transcript

- Closed captioning automatically generated by Zoom



If you have trouble with the meeting technology during the presentation, please call:

1.888.799.9666

Audio Settings ^



Raise Hand



Q&A



Live Transcript

Leave

Public Meeting Notes and Procedures

Public record

- While this virtual public hearing is not being recorded, MassDOT may choose to retain and distribute the images, audio and the Q&A transcript from this hearing.
- All parts of this hearing are considered public record.
- If you are not comfortable being recorded, please refrain from using the Q&A feature or you may choose to excuse yourself from the hearing. Information from this hearing will be posted on the Mass.gov website.

Important notes

- Your microphone and webcam are automatically disabled upon entering the hearing.
- This hearing will be open to questions and answers at the end of the presentation.
- Please take time to respond to our survey at the end of the presentation. Your feedback is important.

Notice of MassDOT's policy on diversity and civil rights:

- All MassDOT activities, including public meetings, are free of discrimination.
- MassDOT complies with all federal and state civil rights requirements preventing discrimination based on sex, race, color, ancestry, national origin (limited English proficiency), religion, creed, gender, sexual orientation, gender identity or expression, or veteran's status.
- We welcome the diversity from across our entire service area. If you have any questions or concerns, please visit <https://www.mass.gov/nondiscrimination-in-transportation-program> to reach the Office of Diversity and Civil Rights.

Thank you for joining our meeting. We appreciate your participation!

Agenda

- Introductions
- Public Outreach
- The Project
- Construction Process & Impacts
- Right-of-Way
- Environmental Permitting
- Questions & Discussions



Introduction of Panel

- **MassDOT**

- Anthony Christakis – Project Manager

- Erin Kinahan – District 6 Project Development

- Michael McNutt, Adetoyin Olaoye – Zoom Producers

- Mark Hicks – ROW Compliance

- **Consultant Design Engineer – Alfred Benesch & Co.**

- Mike Ohrenberger, P.E.

- **Massachusetts Bay Transportation Authority**

- Robert Guptill – Service Planning for Bus Operations

Public Outreach

Newspaper

- The Boston Globe
- The Bulletin
- Boston Irish Reporter

MassDOT Social Media

- Facebook
- Twitter

The Boston Globe

The **Bulletin** Newspapers
Your Hometown Newspapers

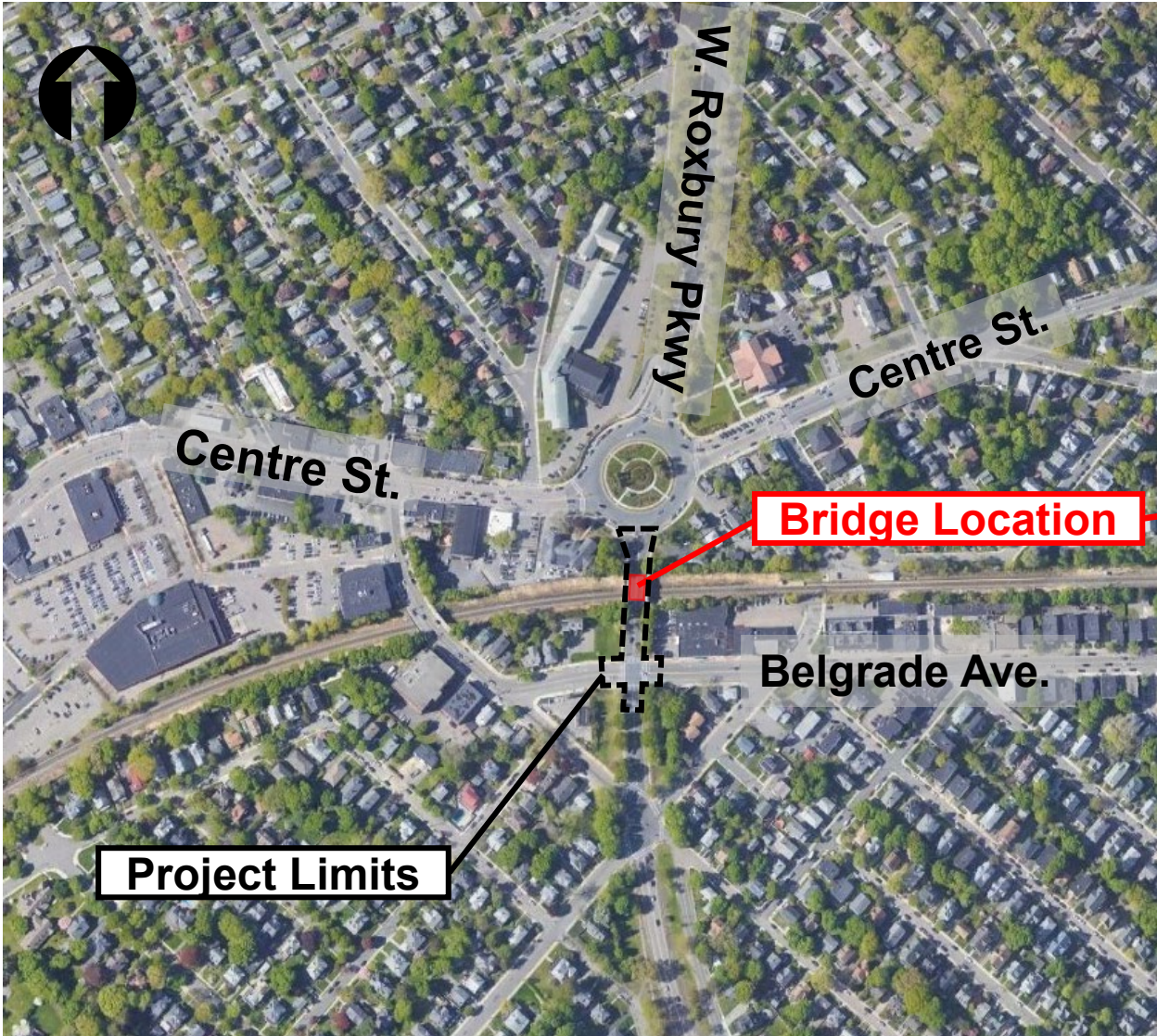


Thanks to the following for sending notice of this meeting:

- Office of Neighborhood services
- Roslindale Main Streets
- West Roxbury Main Streets
- Roslindale Business Group



Location Map



MBTA Commuter Rail
(Needham Line)



**Why was this
project
initiated?**

Existing Conditions

- Latest inspection report (7/24/2022) reveals immediate action required
- Inspection Frequency Increased due to advanced deterioration to monitor safety
- Protective Shielding required to protect Railroad Below
- Temporary Barriers required due to missing Bridge Railings
- Barriers in roadway required due to bridge deterioration

Photos Documenting Existing Bridge Condition

Protective shielding in place
Prevents debris from falling on track



Typical deterioration of bridge abutment



Photos Documenting Existing Roadway Condition

Temporary Traffic Barriers in place along roadway and railing



Temporary Traffic Barriers and Crash Cushions



How did we get here?





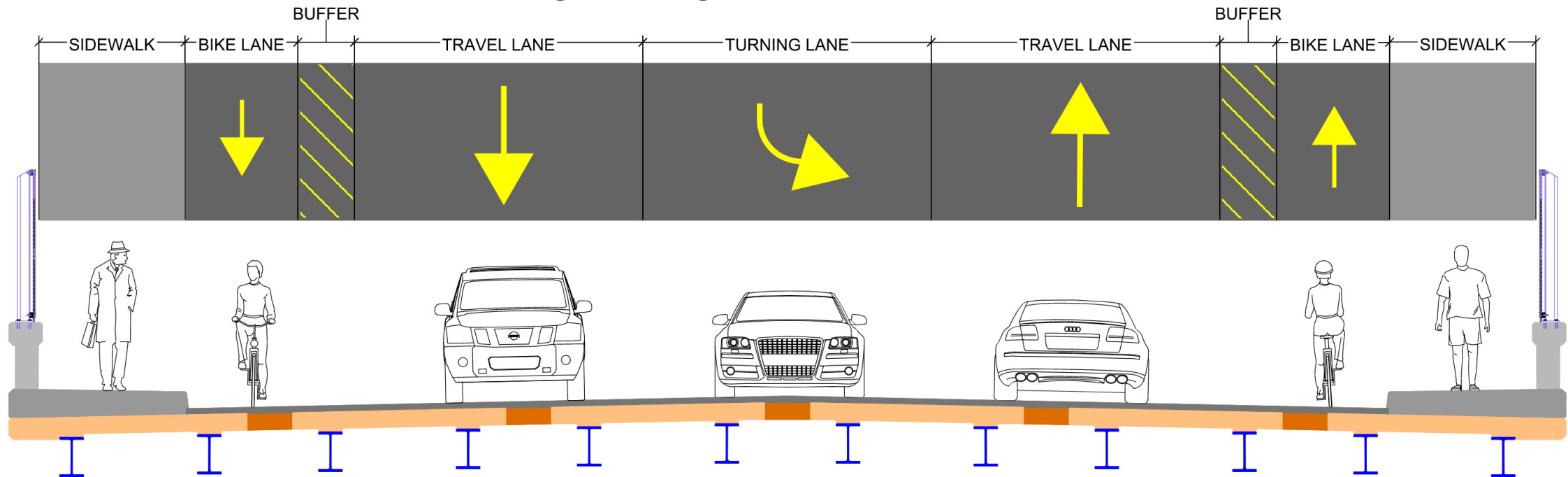
**What do we
want to
accomplish?**

Project Goals

- **Replace Structurally Deficient Bridge**
- **Accelerated Construction Techniques**
 - Shorter construction duration than conventional construction
 - Minimize impacts to Traveling public and abutters
- **Traffic and Complete Street Improvements**
 - Buffered Bike lanes within the project limits
 - Coordinated with DCR and the City of Boston for future connectivity

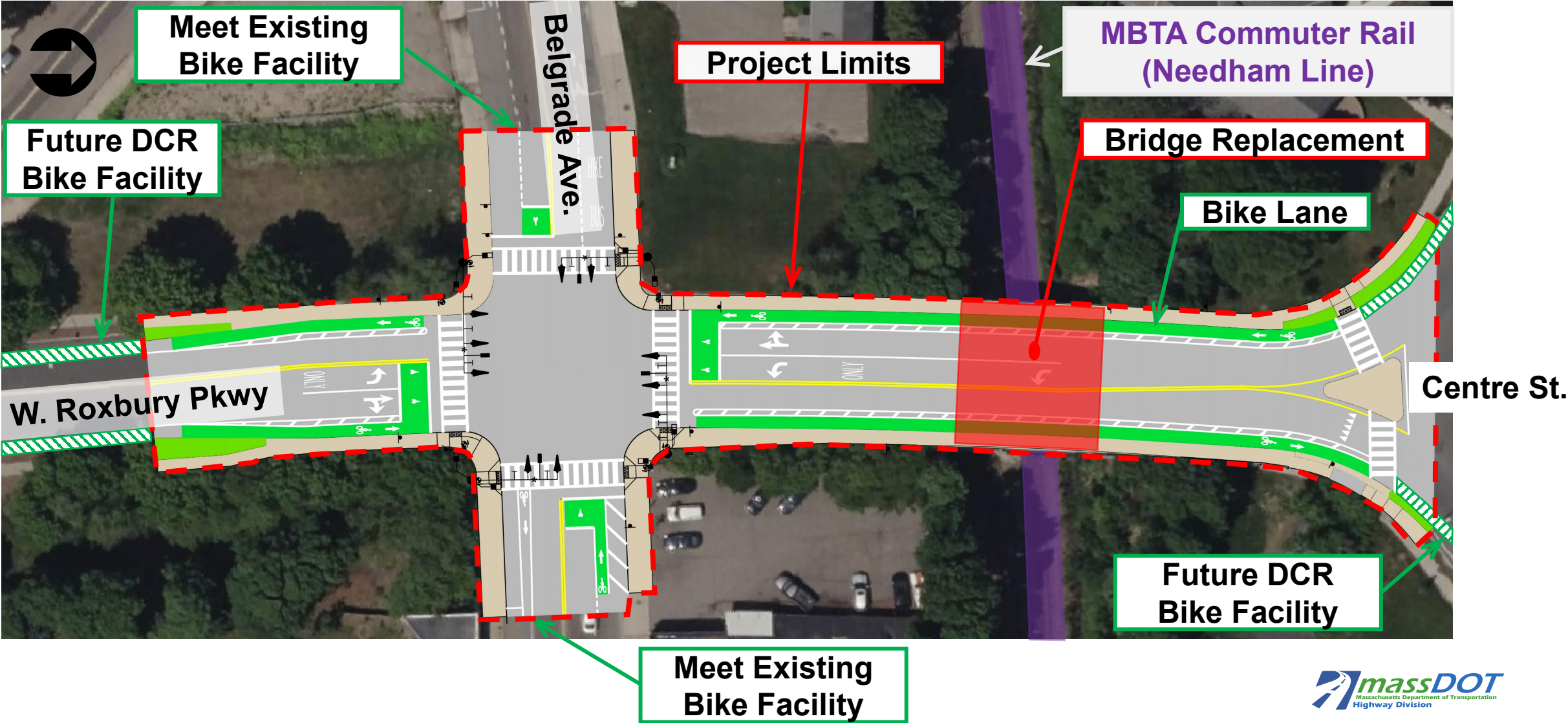
Proposed Improvements between Rotary and Belgrade Ave

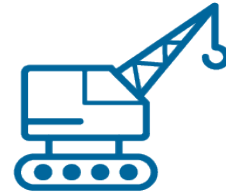
- Two 11 – Foot travel lanes
- One 11 – Foot turning Lane
- Buffered Bike Lanes in both directions
- New sidewalk and bridge railing



Typical Bridge Section

Proposed Improvements Overview





**What is the
construction
approach?**

Construction Methods

Construction of Prefabricated Bridge Unit



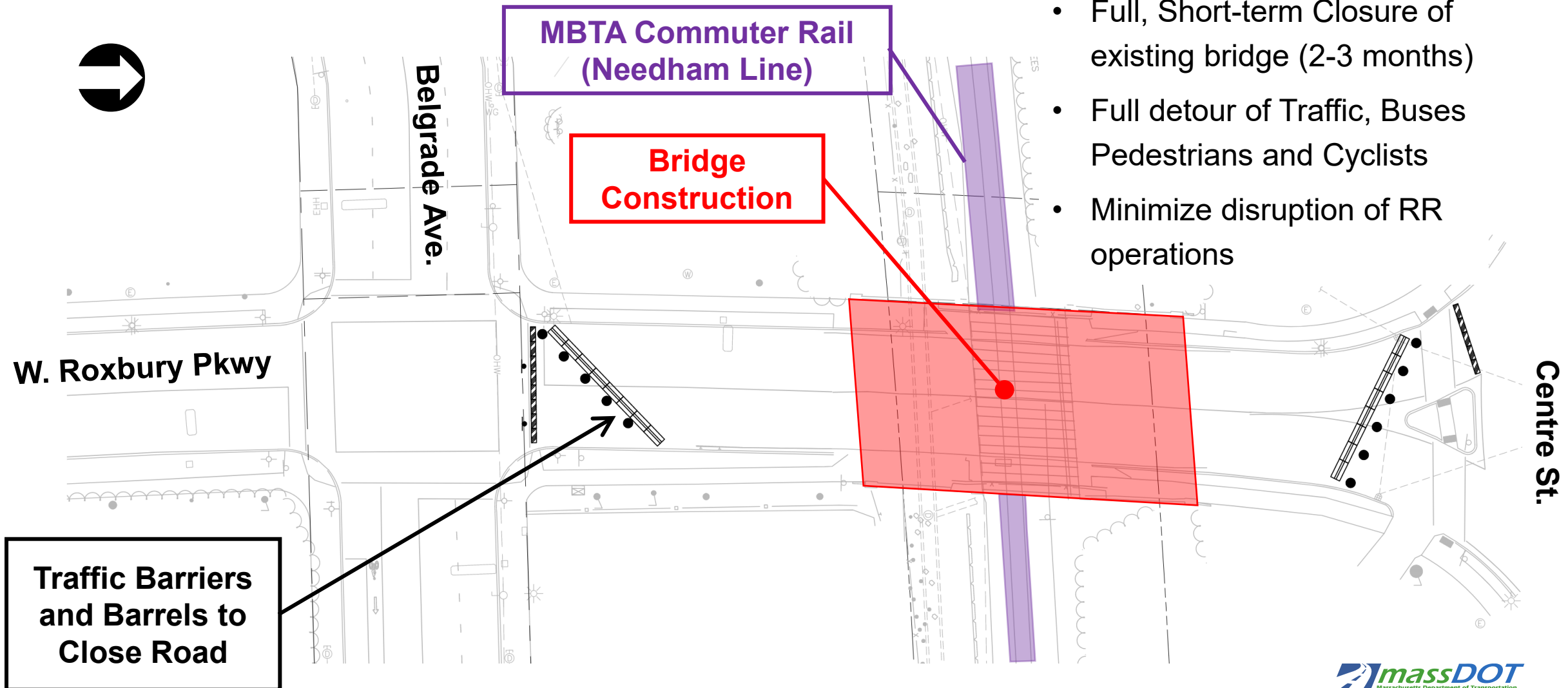
I-93 Fast 14 Project
Medford, Ma

Construction of Precast Abutment Bridge Seat



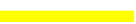


I-90 Acceler8
Southborough, Ma

Accelerated Construction Details

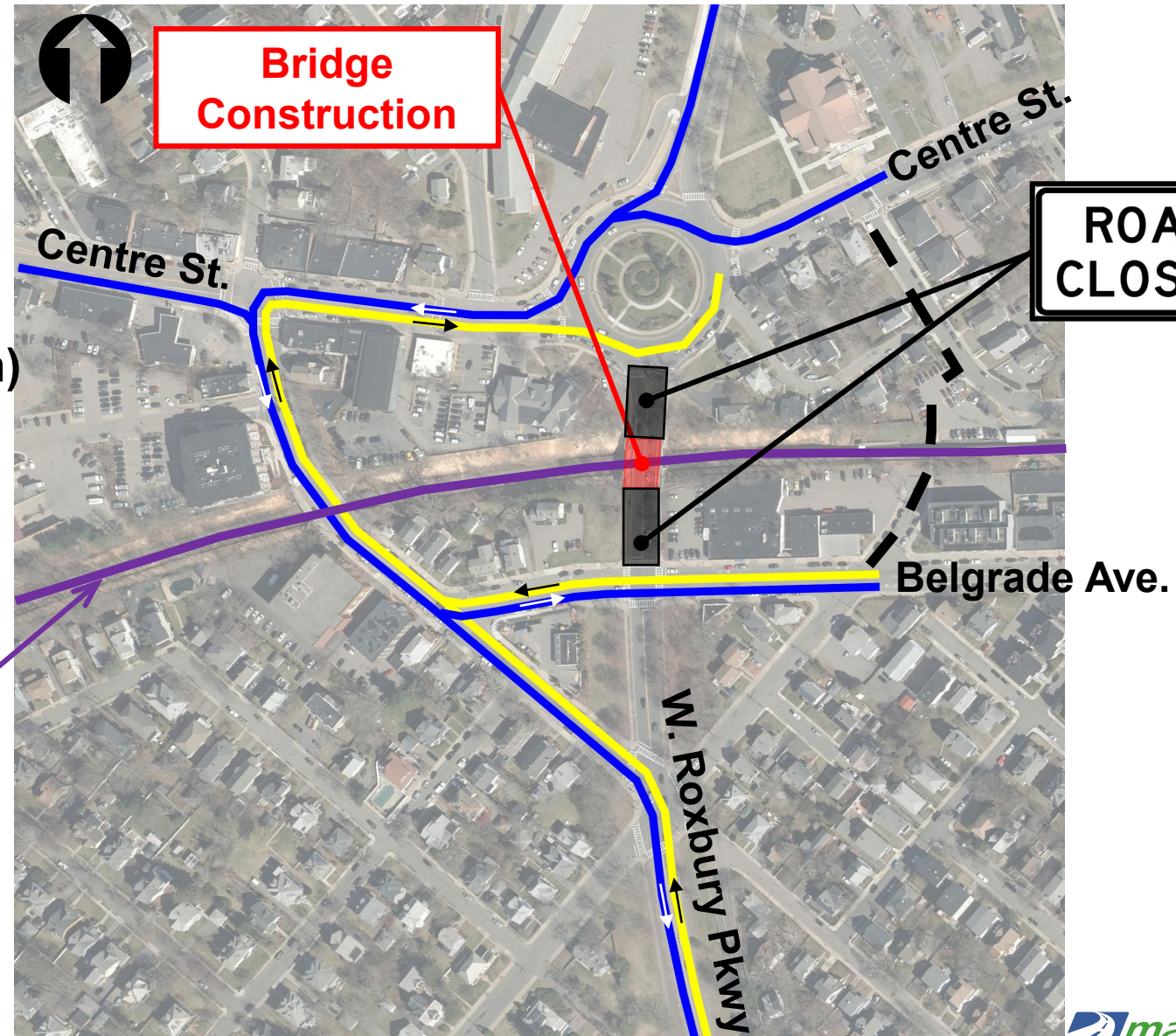


Proposed Detour

Legend

-  Northbound (into Boston)
-  Southbound (out of Boston)
-  Alternate Pedestrian Route

MBTA Commuter Rail
(Needham Line)





**How will your
property be
impacted?**

Right of Way (ROW) discussion – 25% Design

- Responsible for acquiring all necessary rights in public land for design, construction, and implementation of a project.
- Affected property owners will be contacted by personnel from the ROW Bureau or consultants representing MassDOT.
- Procedures must comply with state and federal regulations governing the acquisition process.
 - Property owners are protected under Massachusetts General Laws, primarily Chapter 79.
 - If project receives federal funds, property owners are further protected under Title III of the Real Property Act of 1970, as amended.
- Fee takings, permanent easements, and/or temporary construction easements may be required.

Impact to Property



361 Belgrade Avenue



**What are the
environmental,
cultural
resource, and
community
impacts?**

Anticipated Permitting

- Categorical Exclusion – Federal Highway Administration
- Section 106 (Historic Properties) – Federal Highway Administration



Preliminary Estimated Schedule



January
2023

25% Design and
Design Public
Hearing



Spring
2024

Complete Plans,
Specifications,
and Estimate
Submission



Spring/Summer
2024

Ready to
Advertise Project
for Construction



TBD

Advance to
Construction



**How will we
keep you
informed?**

How to reach us?

- Submit written comments to:
Carrie Lavalley, P.E. Chief Engineer
MassDOT
10 Park Plaza
Boston, MA 02116
Attention: Highway Design, PROJECT FILE NO. 606902
- Submit email comments to:
MassDOTProjectManagement@dot.state.ma.us
- For project information visit the MassDOT Design Public Hearing web site at:
<https://www.mass.gov/massdot-highway-design-public-hearings>
or use the QR Code:





**Questions and
discussion**

Questions and Answers



- “Raise your hand” to be unmuted for verbal questions (Alt + Y if using a phone)



- Submit your questions and comments using the Q&A button



- Please state your name before your question



- Please share only 1 question or comment at a time, limited to 2 minutes, to allow others to participate



- To ask a question via phone, dial *9 and the moderator will call out the last 4-digits of your phone number and unmute your audio when it is your turn



- Please take a few minutes to complete the survey after the meeting to let us know how your experience was with this virtual meeting

All questions and comments are subject to disclosure for public records. Please use these functions for project related business only.



Thank You

West Roxbury Parkway over MBTA RR Bridge Replacement Project

Virtual | Wednesday, January 11, 2023 | 6:00 P.M.

Project File No. 606902

Anthony Christakis, Project Manager

