



Route 28 at Chickatawbut Road Intersection Improvement Project Milton, MA

Virtual Design Public Hearing

October 27, 2022 | 7:00 p.m. – 8:00 p.m.

Project File No. 607342

Zoom Public Hearing Webinar Controls



- Drop down menu to check microphone and speakers



- Ask a question and share comments



- Raise your hand - *9 for users dialing in (Alt + Y to raise your hand)



- If you are unable to access the internet or are having technical problems, please call into the meeting at +1 646-876-9923 Webinar ID: 841-4988-8078



Live Transcript

- Closed captioning automatically generated by ZOOM



If you have trouble with the meeting technology during the presentation, please call:

1-888-799-9666



Public Meeting Notes and Procedures

Public Record

- The Massachusetts Department of Transportation may choose to retain and distribute the chat transcript or written record of this meeting.
- All written recordings and chat transcript will be considered a public record.
- Please use the Q&A feature for project related business only.

Important Notes

- Your microphone and webcam are automatically disabled upon entering the meeting.
- The meeting will be open to questions and answers at the end of the presentation.
- Please take time to respond to our survey at the end of the presentation. Your feedback is important.

Notice of MassDOT's Policy on Diversity and Civil Rights:

- All MassDOT activities, including public meetings, are free of discrimination.
- MassDOT complies with all federal and state civil rights requirements preventing discrimination based on sex, race, color, ancestry, national origin (limited English proficiency), religion, creed, gender, sexual orientation, gender identity or expression, or veteran's status.
- We welcome the diversity from across our entire service area. If you have any questions or concerns, please visit <https://www.mass.gov/nondiscrimination-in-transportation-program> to reach the Office of Diversity and Civil Rights.

Thank you for joining our meeting. We appreciate your participation!

Panel

MassDOT Highway Division

- Joshua Bartus – Project Manager
- Erin Kinahan – MassDOT District 6
- Robert Bertoldi – Right of Way Bureau

Town of Milton

- Chase Berkeley, P.E. – DPW Director

Howard Stein Hudson

- Steven Tyler, P.E. – Project Manager
- Jessica Lizza, P.E., PTOE – Manager of Traffic Engineering

Producers

- Adetoyin Olaoye
- Leah Grodstein

Outreach Conducted for the Design Public Hearing

- Meeting notice published in local newspapers:
 - The Patriot Ledger
 - The Milton Times
- Flyer and meeting notices shared with Town of Milton
- Flyer and meeting notices shared with organizations in Milton and surrounding area:
 - Boston Region MPO
 - Boston Center for Independent Living
 - Milton Senior Center (Council on Aging)
 - African Immigrant Legal Services
- Hearing information shared through MassDOT's website and social media



Agenda

- 01 Welcome and Opening Remarks
- 02 Project Overview
- 03 Existing Conditions
- 04 Project Goals
- 05 Proposed Design
- 06 Impact to Environment
- 07 Right of Way
- 11 Construction Approach
- 12 Next Steps
- 13 Questions & Feedback





Purpose of Project

- Improve safety and traffic conditions at the intersection of Route 28 (Randolph Avenue) at Chickatawbut Road in Milton
- Consistently in the Top 5 of High Crash Locations in Massachusetts
- The project will improve vehicular, pedestrian, and bicyclist safety
- Include aesthetic improvements to this important gateway intersection into the Town of Milton and Metropolitan Boston

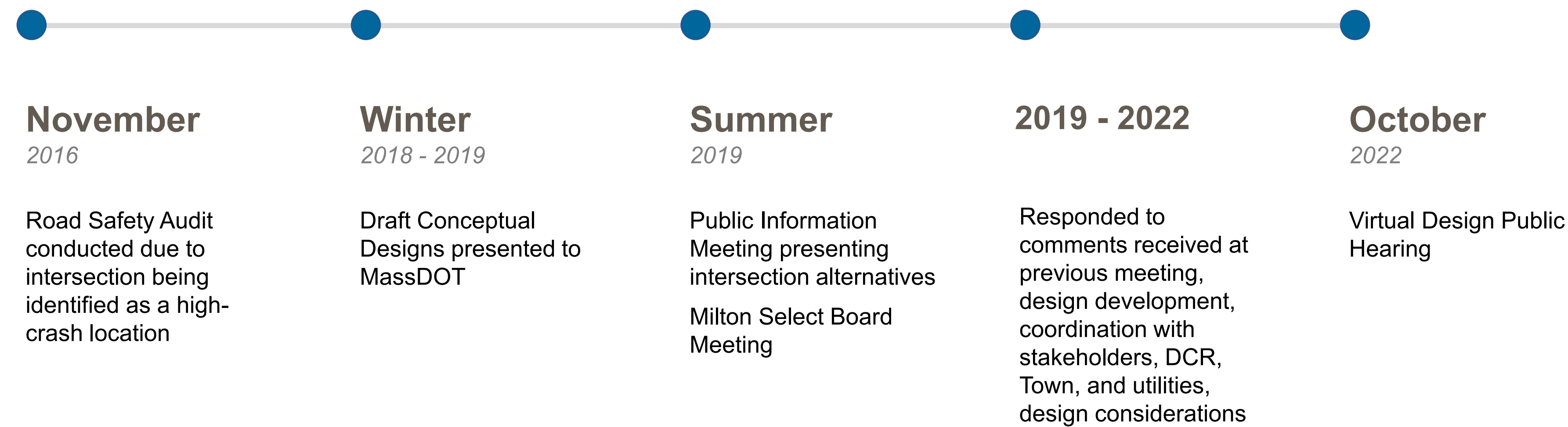
Project Area

Jurisdiction

-  Massachusetts Department of Transportation (MassDOT)
-  Department of Conservation and Recreation (DCR)



How Did We Get Here?

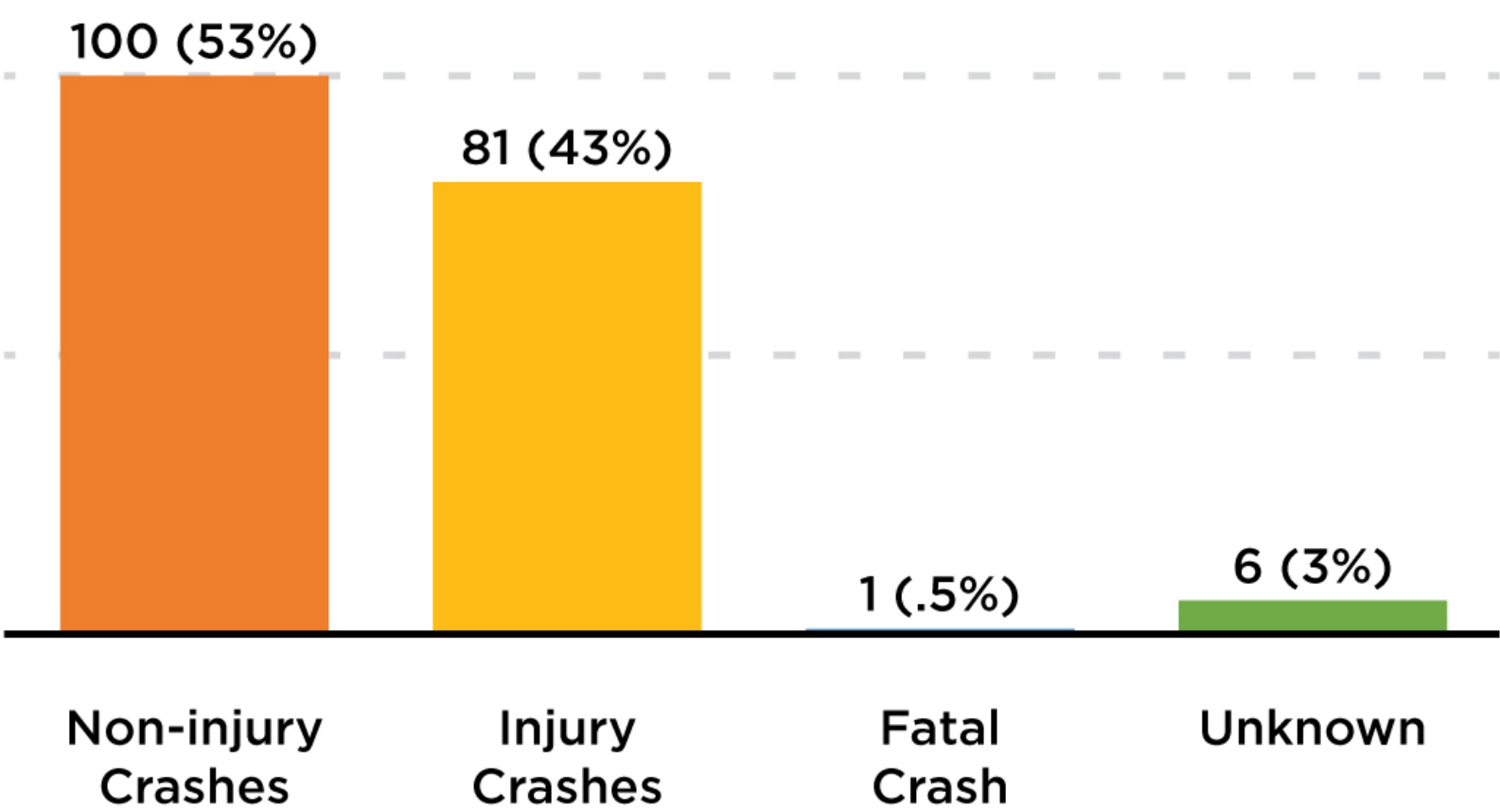




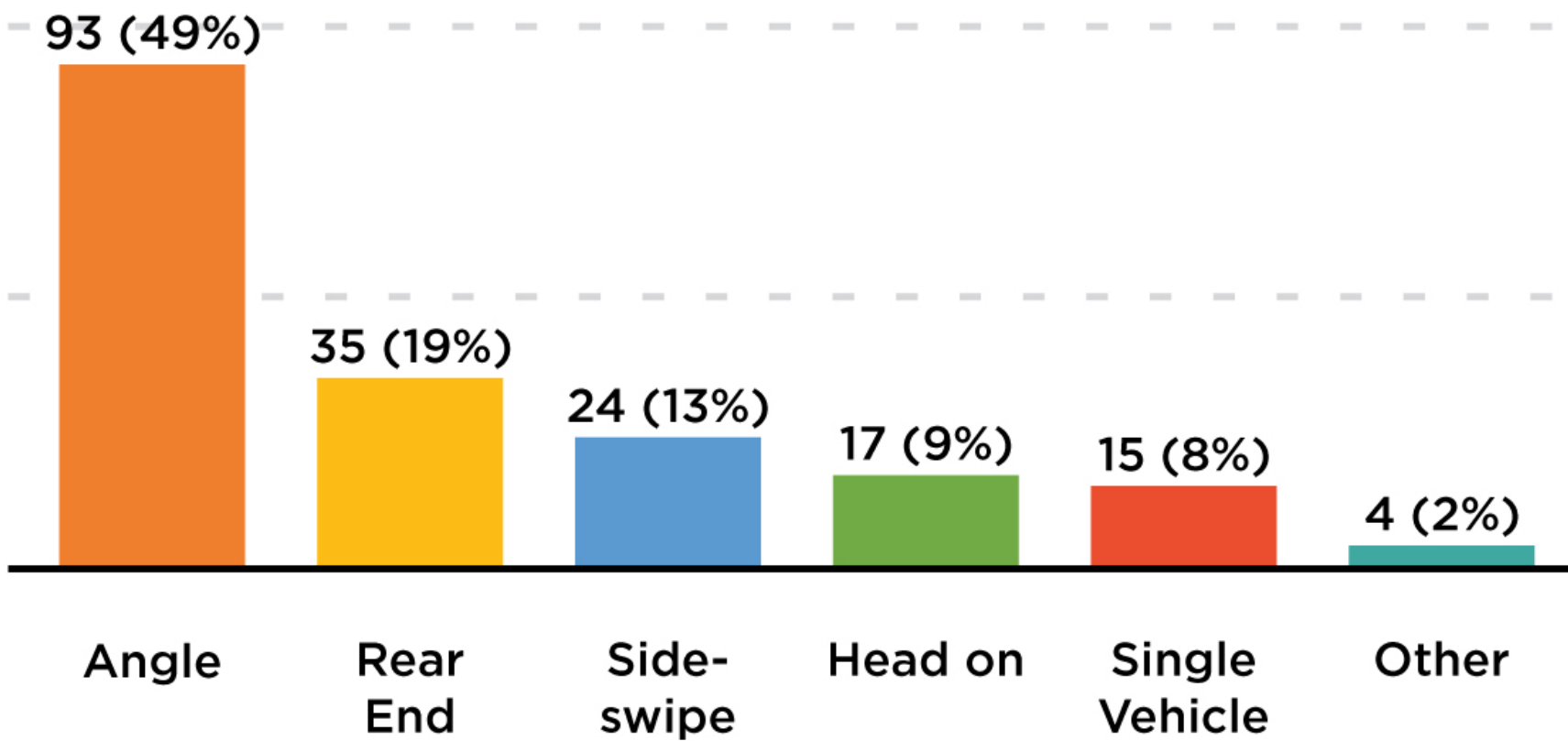
**Why was this
project
initiated?**

Crash Summary (2016-2022 Total Crashes: 188)

Crash Severity (2016-2022)



Crash Types (2016-2022)

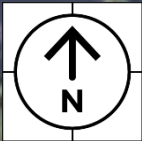
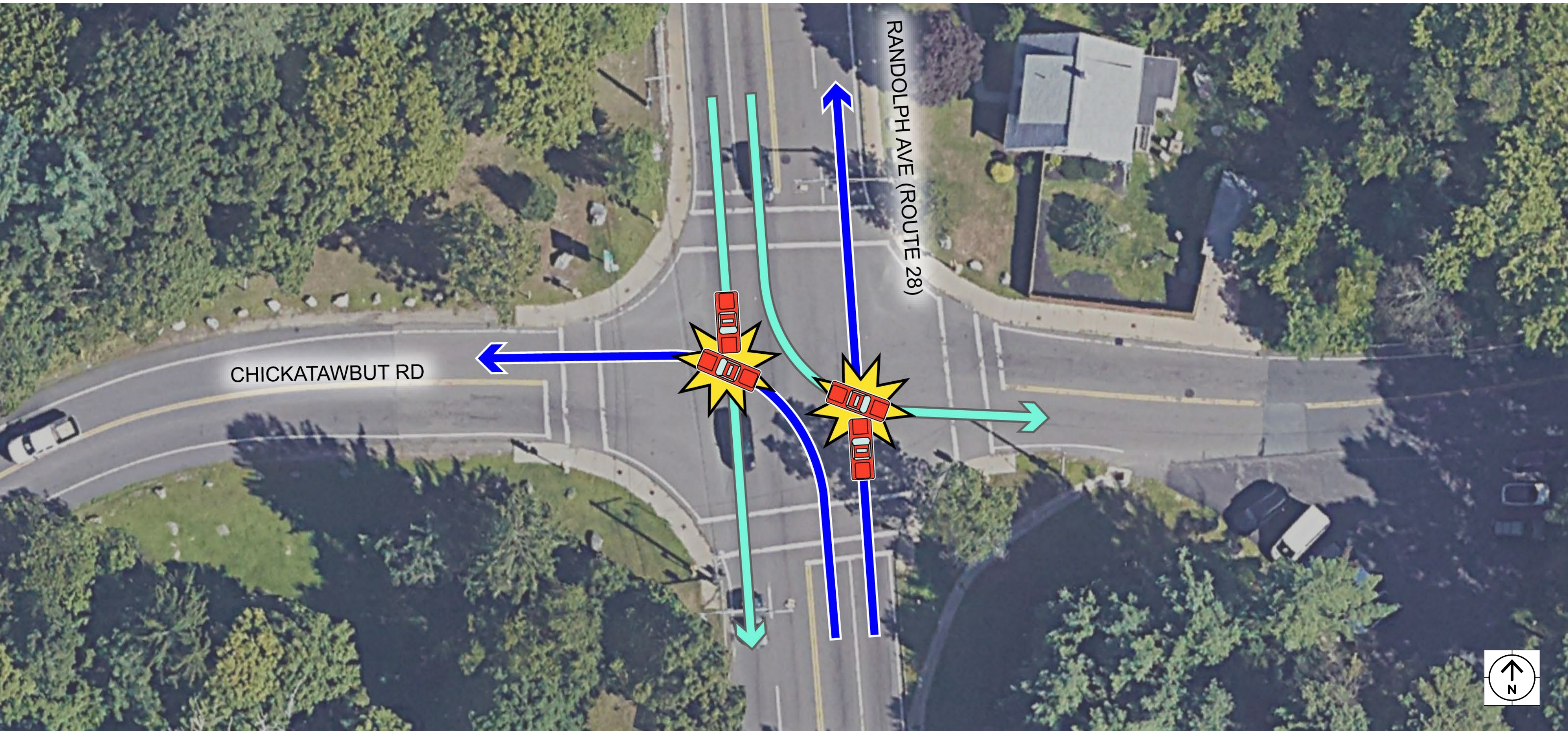


Existing Left-Turn Conflicts



Randolph Avenue looking north at the intersection with Chickatawbut Road.

Left-Turn Crashes



Existing Pedestrian and Bicycle Accommodations

Chickatawbut Road Westbound Approach

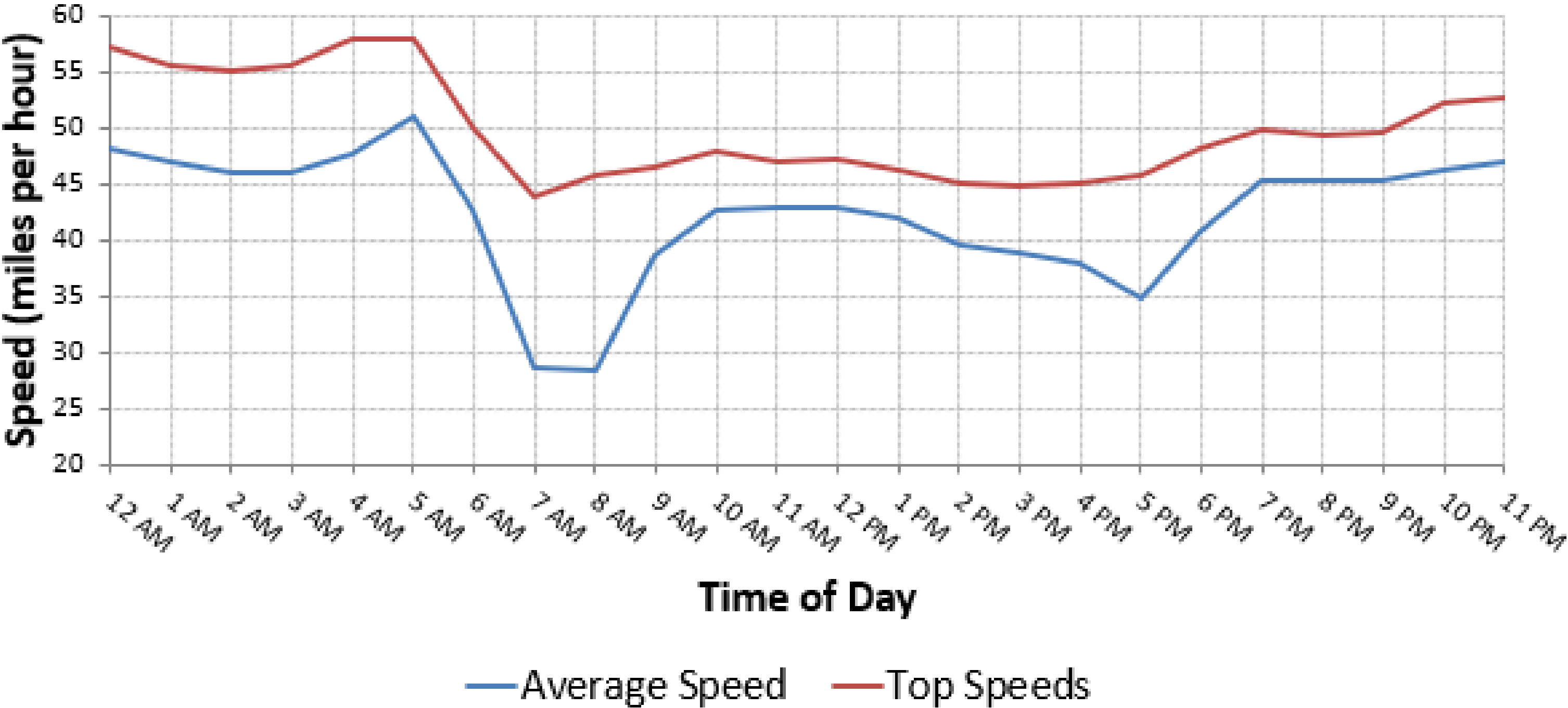


Pedestrian Accommodations Not ADA-Compliant



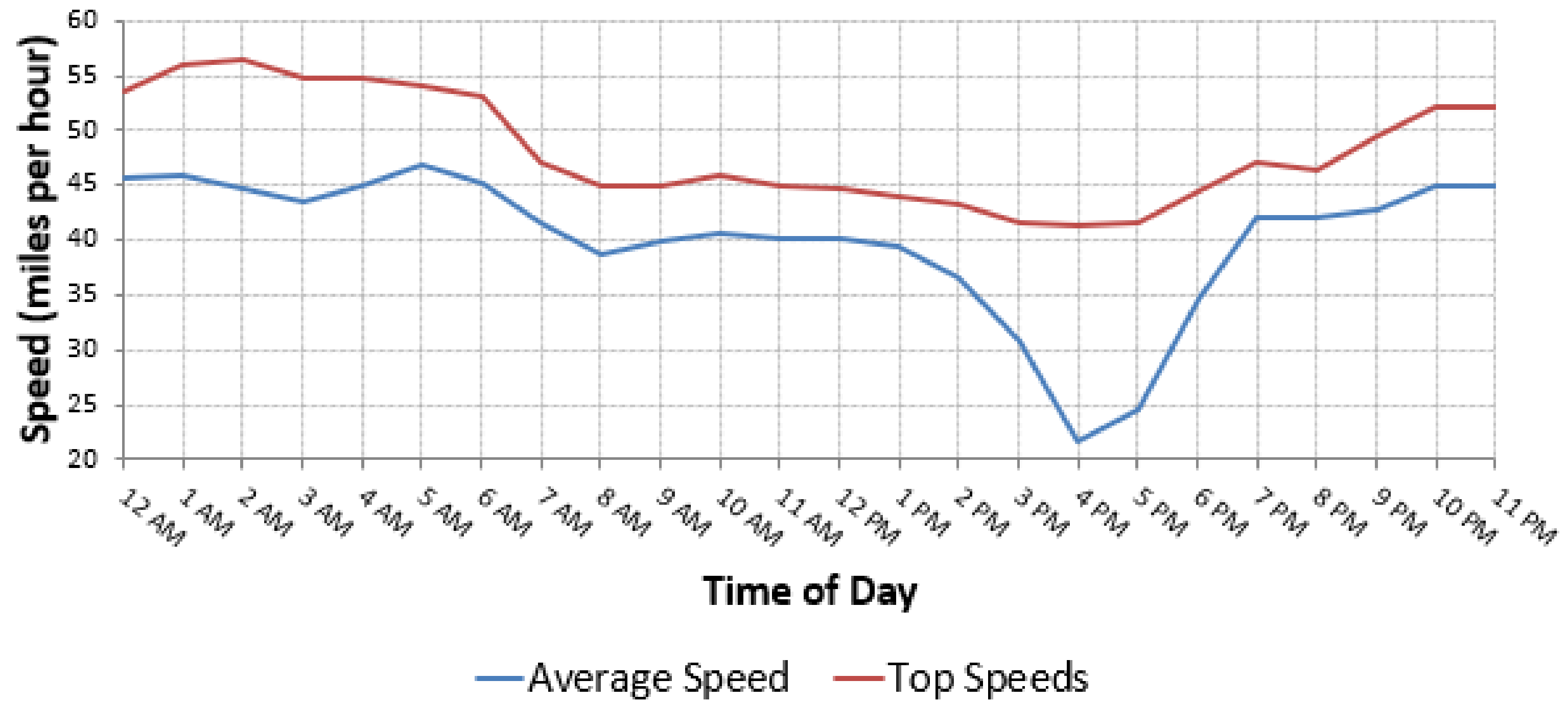
Existing Vehicular Speeds

Randolph Avenue (Route 28) Northbound Weekday Travel Speeds



Existing Vehicular Speeds

Randolph Avenue (Route 28) Southbound Weekday Travel Speeds



Existing Traffic Conditions

Backups on Chickatawbut Road Westbound



Backups on Route 28 Northbound





**What do we
want to
accomplish?**

Project Goals

- **Roadway Safety**
 - Reduce the likelihood of fatal and injury crashes
 - Lower vehicle travel speeds
- **Pedestrian and Bicycle Accommodations**
 - Provide improved and accessible pedestrian and bicycle facilities within Project Limits
- **Traffic congestion**
 - Improve traffic flow along the Route 28 corridor within vicinity of the intersection of Route 28/Chickatawbut Road

Speed Matters



Field of Vision at 15 mph



Field of Vision at 30 to 40 mph



Why Can't We Just Lower the Speed Limit?

- Speed limit reduction requests must comply with State Law
 - Visit mass.gov/massdot-speed-zoning for more information regarding the speed management process
- Speed limit signs alone do not necessarily reduce speeds or change driver behavior
- Reconfiguration of the intersection is one of the most effective actions that can reduce speeds and provide a safer intersection



**What are the
benefits of a
roundabout?**

Roundabout Benefits

- Improves safety (29% more reduction in fatal and injury crashes vs. a traffic signal)
- Lower speeds – Circulating speeds between 15-20 mph
- Reduces conflict points
- Improves traffic operations on Route 28 approaching intersection

Percent of Crashes Reduced Compared to Signalized Alternative

Type of Crash	Signal	Roundabout
All crashes	43%	48%
Fatal and Injury	44%	73%
Property Damage	42%	30%

Roundabout Safety Improvements

FEWER CONFLICT POINTS THAN SIGNALIZED INTERSECTIONS

75% fewer vehicle-to-vehicle conflict points

67% fewer vehicle-to-pedestrian conflict points

LIVES SAVED

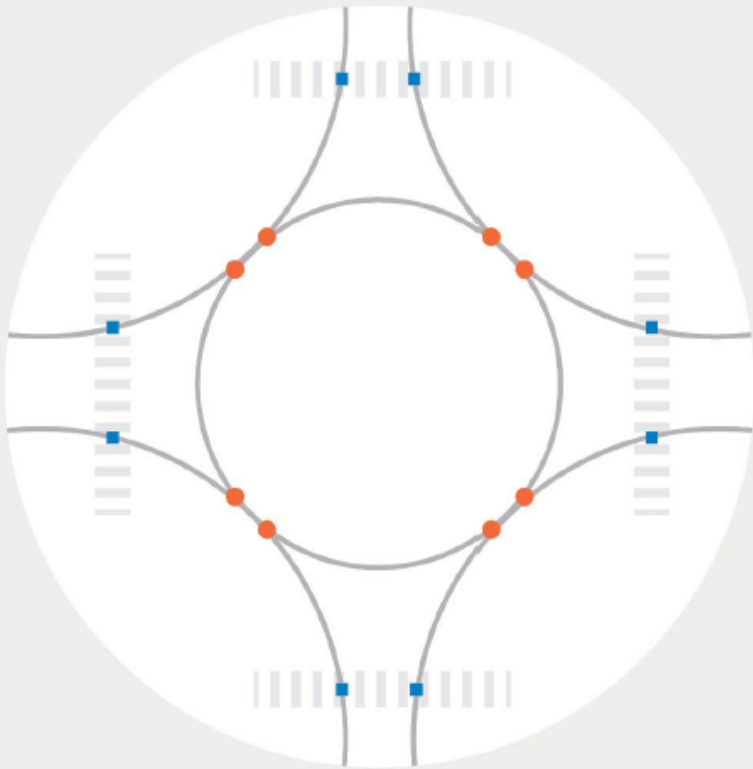
Up to **90%** reduction in fatalities

76% reduction in injury crashes

30-40% reduction in pedestrian crashes

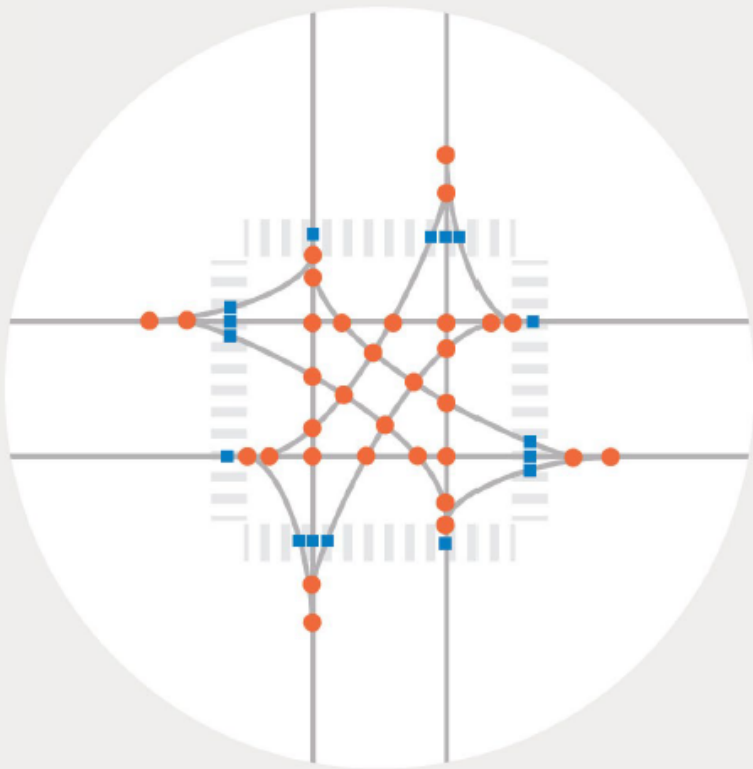
10% reduction in bicycle crashes

POSSIBLE CONFLICTS POINTS: ROUNDABOUT VS. 4-WAY INTERSECTION



8 Vehicle to Vehicle Conflicts

8 Vehicle to Pedestrian Conflicts

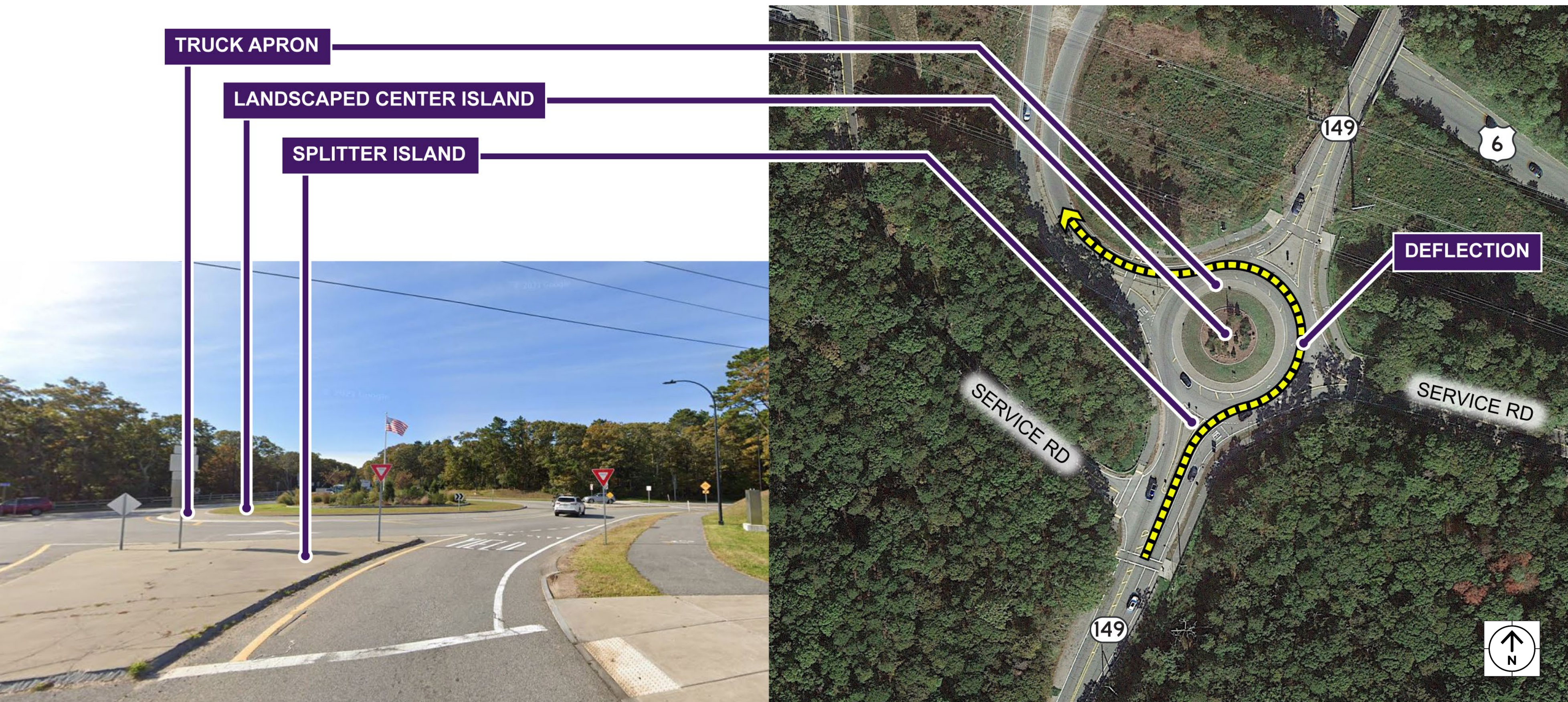


32 Vehicle to Vehicle Conflicts

16 Vehicle to Pedestrian Conflicts

This comparison assumes both intersections have single through lanes crossing the intersection.

Roundabout Design Elements



How are Roundabouts Different from Rotaries?

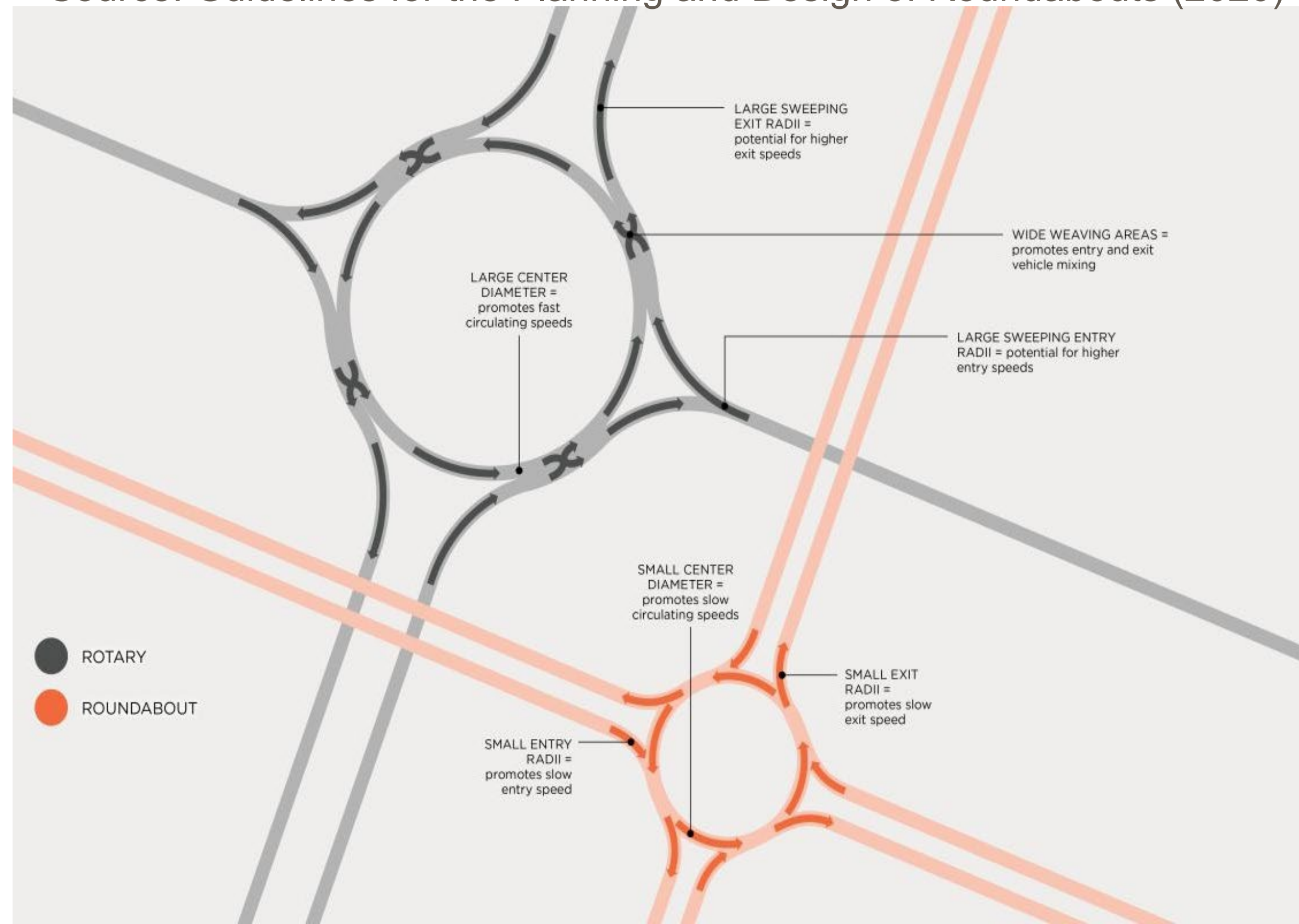
Rotaries are:

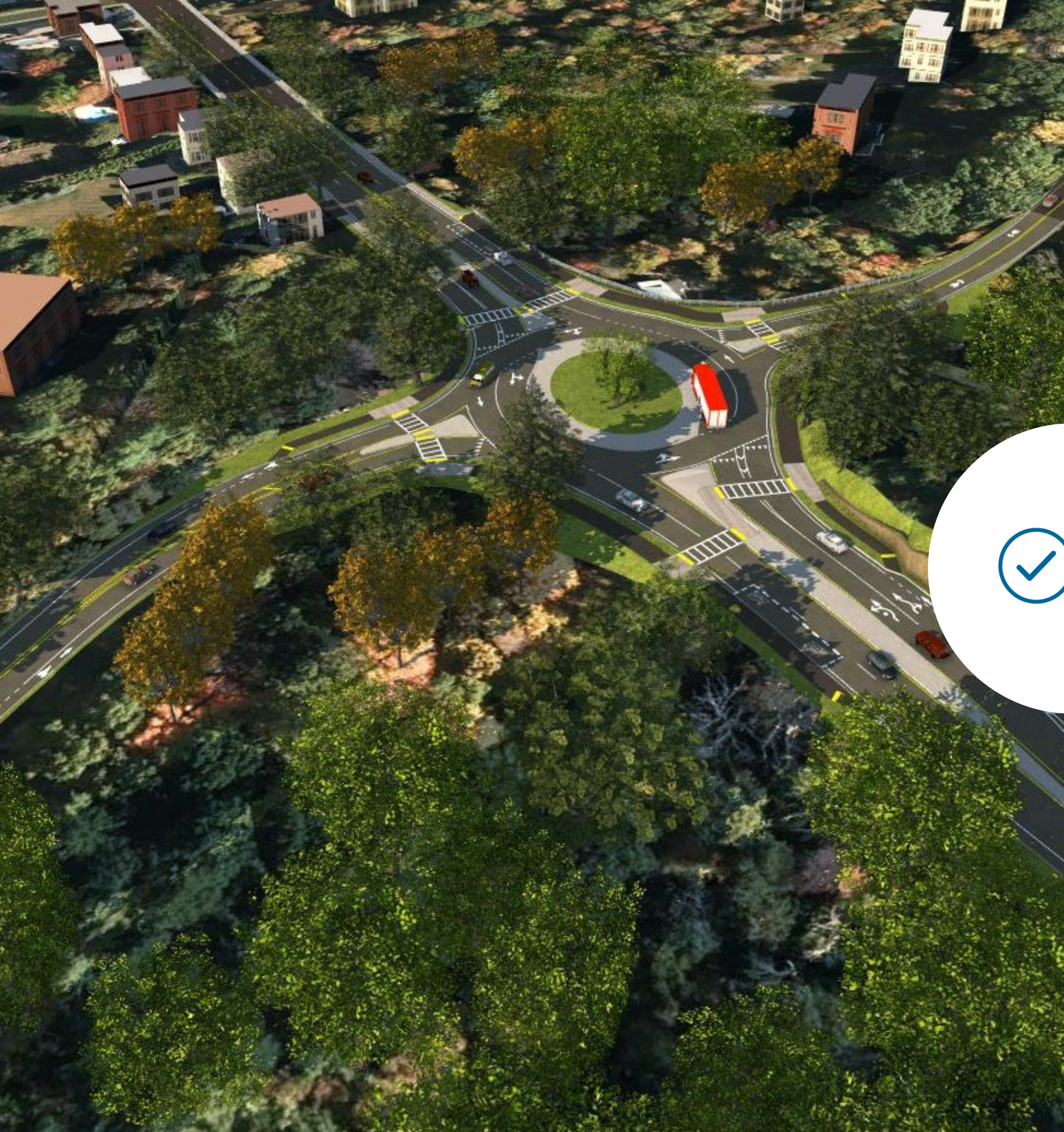
- Larger
- Faster speeds
- Lane changing may be required

Roundabouts are:

- Smaller
- Slower speeds
- Yield upon entry
- Avoid lane changing inside the roundabout

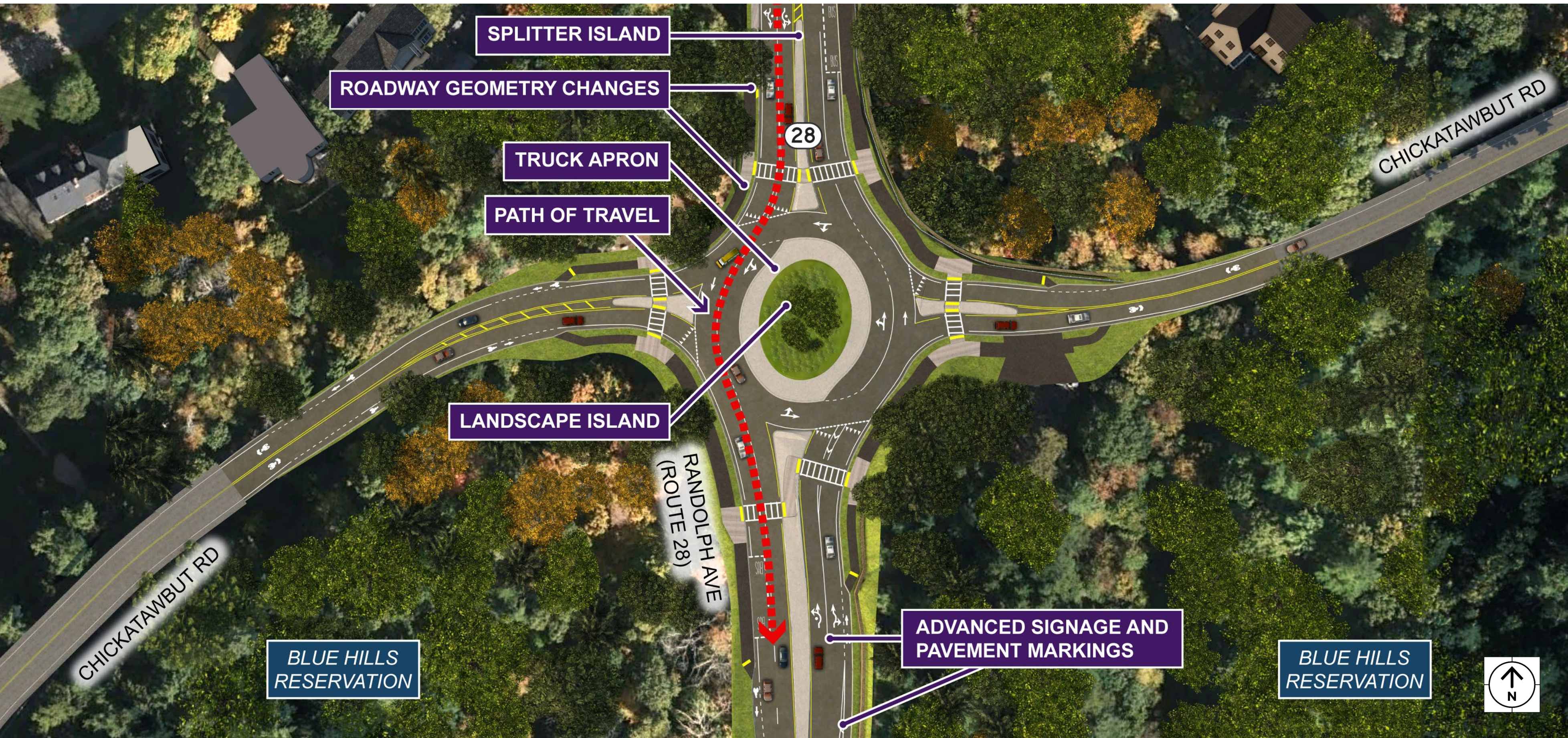
Source: Guidelines for the Planning and Design of Roundabouts (2020)



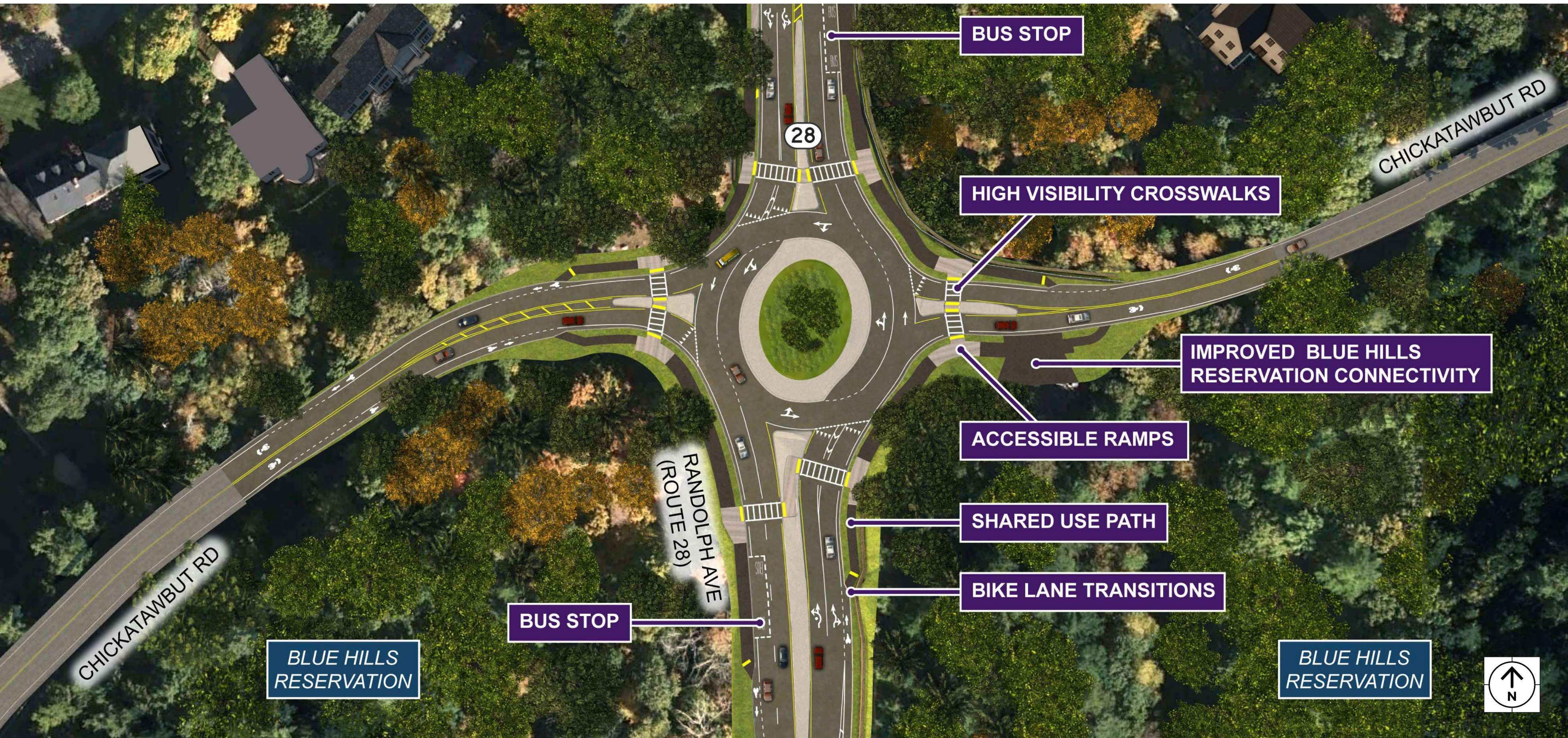


**What is the
proposed
design?**

Proposed Roundabout – Vehicular Improvements



Proposed Roundabout – Pedestrian and Bicycle Improvements



BUS STOP

HIGH VISIBILITY CROSSWALKS

IMPROVED BLUE HILLS
RESERVATION CONNECTIVITY

ACCESSIBLE RAMPS

SHARED USE PATH

BIKE LANE TRANSITIONS

BUS STOP

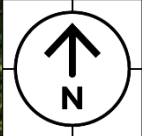
RANDOLPH AVE
(ROUTE 28)

CHICKATAWBUT RD

CHICKATAWBUT RD

BLUE HILLS
RESERVATION

BLUE HILLS
RESERVATION

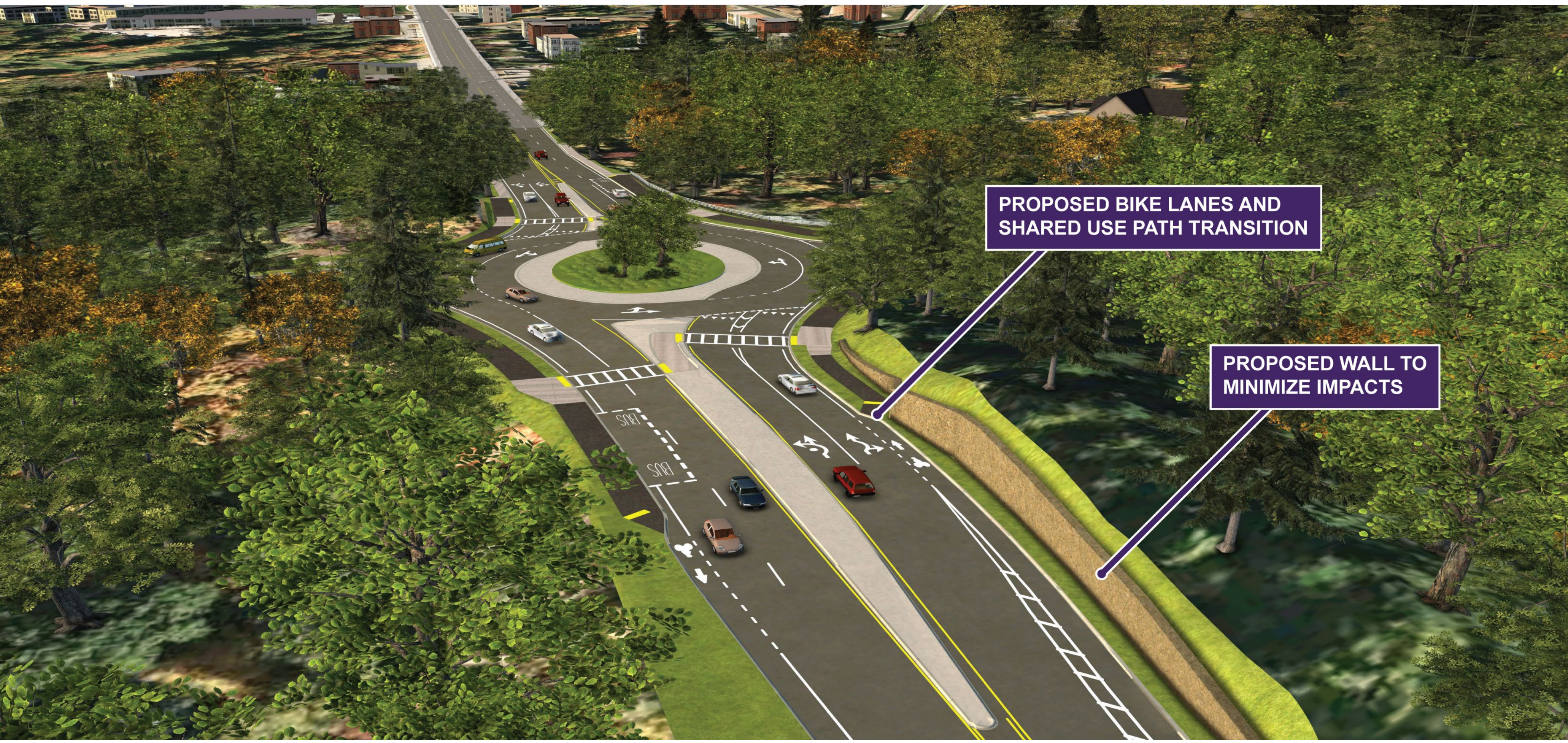


Existing Conditions – Aerial View from South



EXISTING STEEP
EXPOSED ROCK CUT

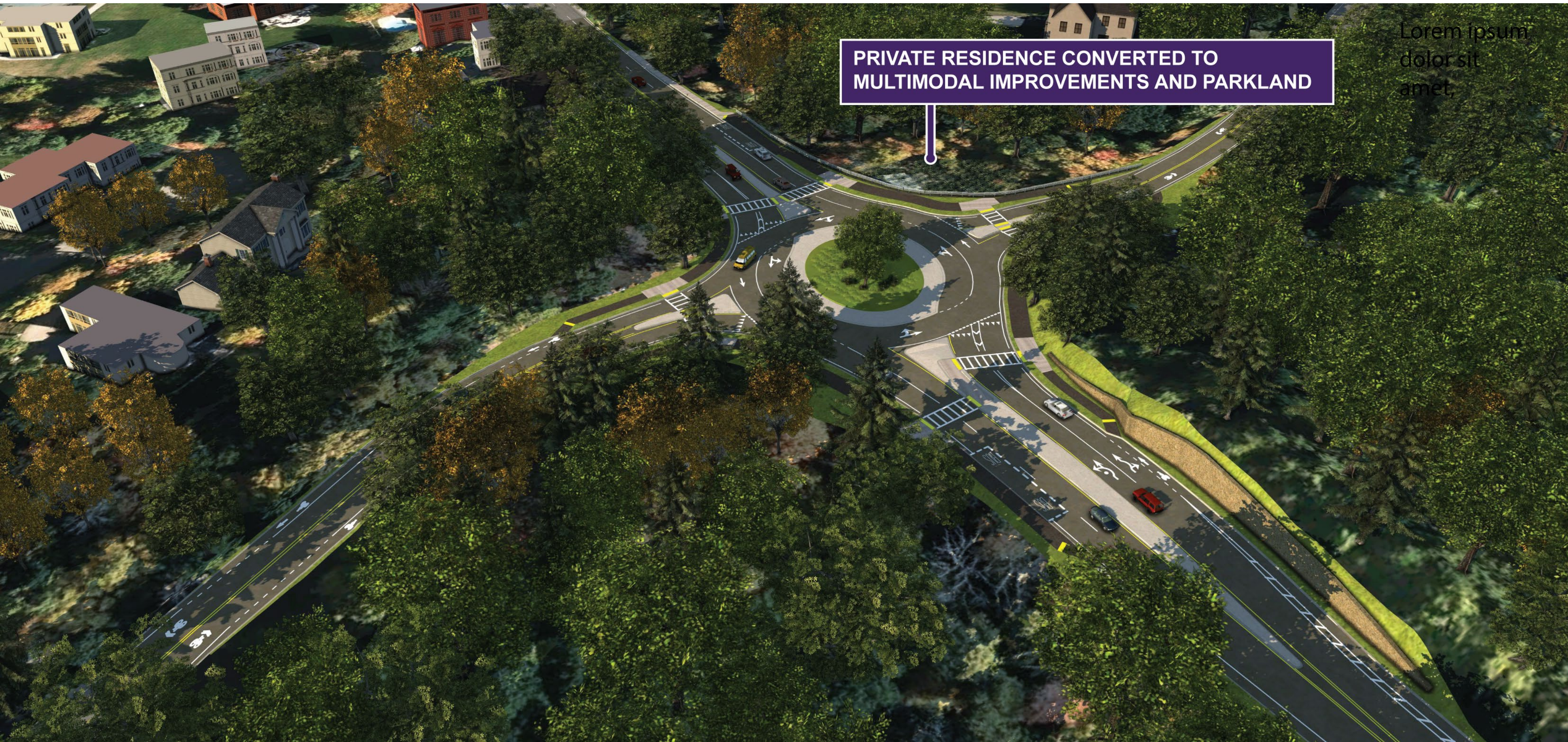
Proposed Roundabout – Aerial of View from South



Existing Conditions – Aerial View from West



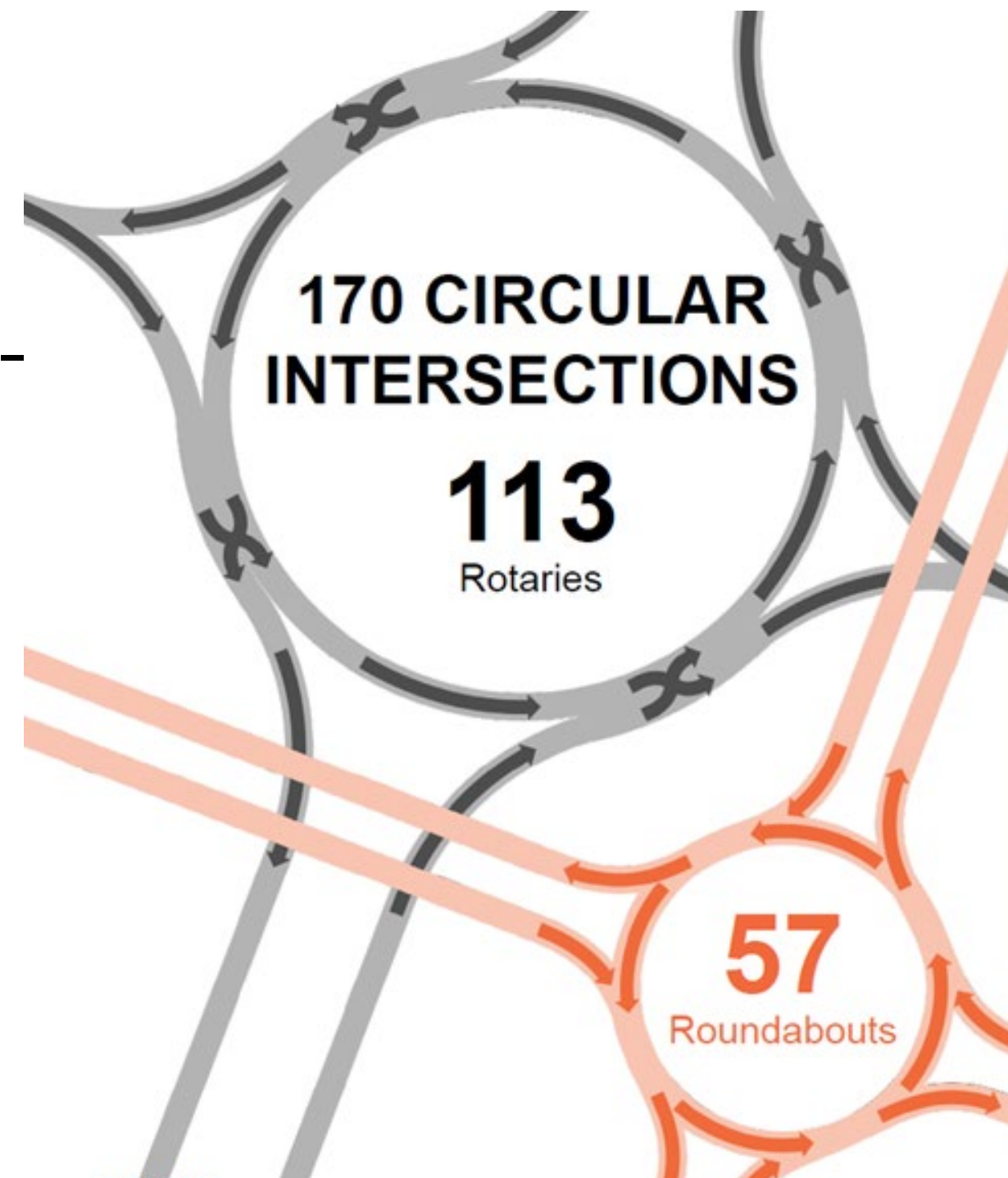
Proposed Roundabout – Aerial View from West



Lorem ipsum
dolor sit
amet,

Roundabouts In Massachusetts

- Milton will not be the first Massachusetts municipality to implement a modern roundabout:
 - Service Rd/Meetinghouse Way – West Barnstable
 - Rte 85/Broad St – Hudson
 - Boylston St/Lincoln St – Worcester
 - Rte 28 – Chatham
 - Main St/Rte 146 – Millbury
 - Rte 115 – Norfolk
 - Rte 116 – South Amherst

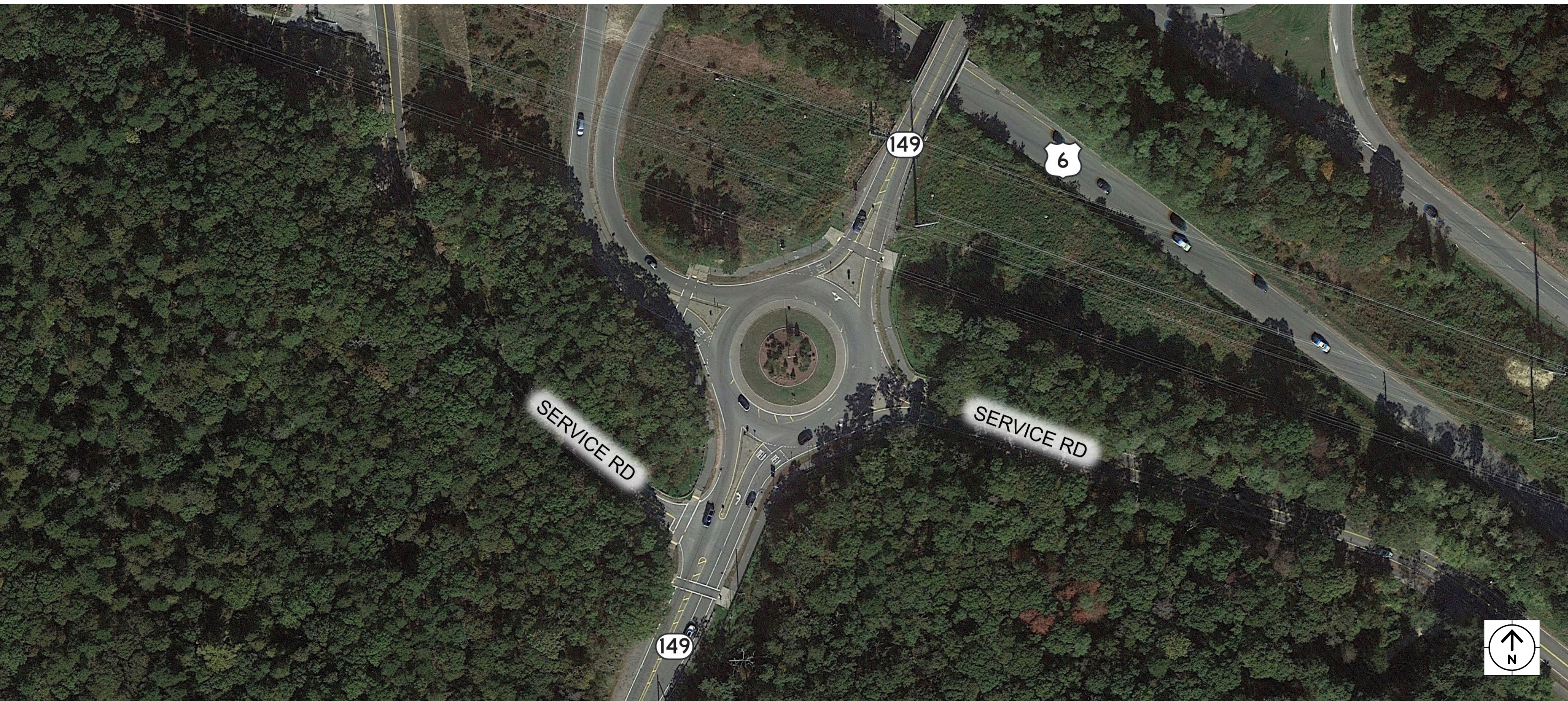


ROUNDBABOUTS LOCATED IN MANY DIFFERENT CONTEXTS



Roundabout Examples - Barnstable

Route 149 at Service Road, Barnstable



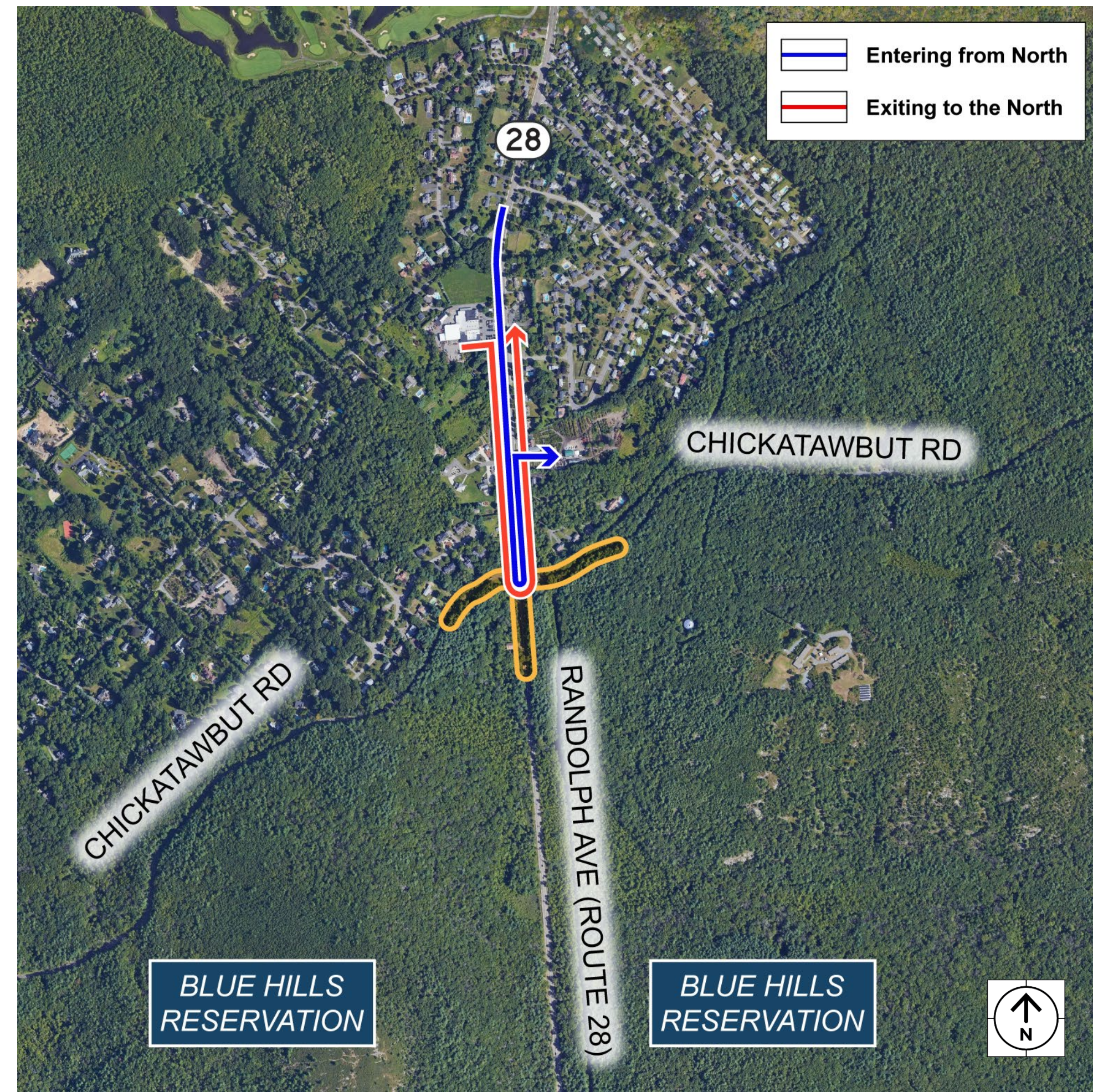
Roundabout Examples - Worcester

Boylston Street at Lincoln Street, Worcester



How Will I Exit My Driveway

- Roundabout will reduce backups along Randolph Avenue approaching Chickatawbut Road
- The roundabout can be utilized for U-turns
- Slower speeds will make gaps easier to judge



How Will I Exit My Neighborhood?

- Residents in the neighborhood west of Route 28 will be able to safely utilize Chickatawbut Road to access Randolph Avenue
- Can utilize the Hillside Street intersection
- Traffic backups heading south will be reduced

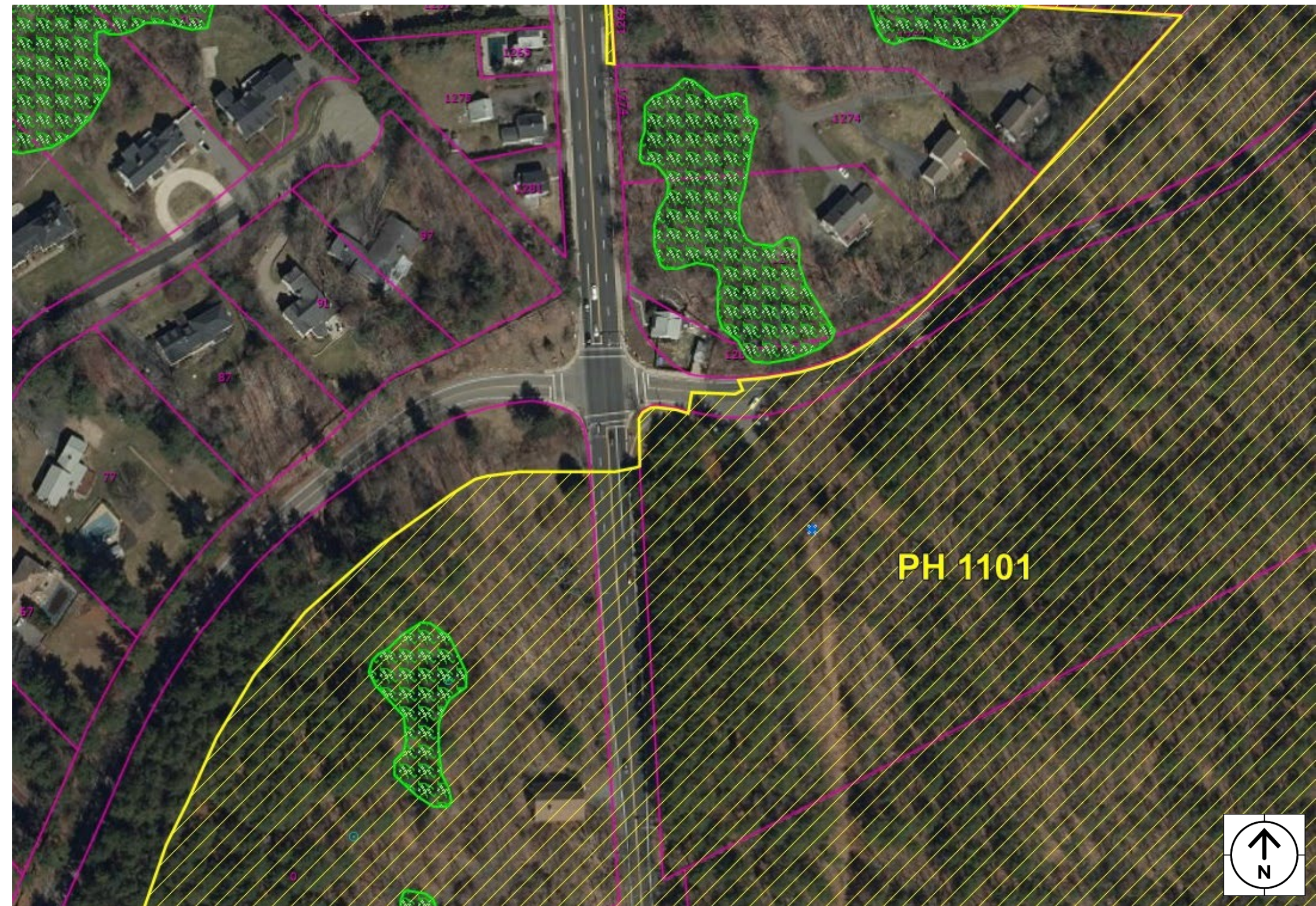




**What are the
environmental
impacts?**

Environmental Impacts and Permitting

- Wetlands Protection Act
- Completing Massachusetts Environmental Policy Act (MEPA) and National Environmental Policy Act (NEPA) Processes
- Coordinating with MassWildlife, MassDEP, and DCR
- Stormwater improvements





**How will your
property be
impacted?**

Preliminary Right of Way (ROW) discussion | 25% DPH

- MassDOT is responsible for acquiring all necessary rights in public land for design, construction, and implementation of this project.
 - Fee takings, permanent easements, and/or temporary construction easements may be required.
- Affected property owners will be contacted by personnel from the MassDOT ROW Bureau or consultants representing the responsible agency.
 - Property owners are protected under Massachusetts General Laws, primarily Chapter 79.
- Preliminary Right of Way (ROW) drawings will be available at Milton Town Hall, in the Engineering Department, for public review and comment.

At this stage of design, the ROW process has not been finalized. This meeting is an opportunity for the public to comment on any impacts to properties.



**What is the
construction
approach?**

Construction Approach

- Staged construction maintaining pedestrian access and two-way traffic
- Access to abutting driveways will be maintained throughout construction
- Long-term detours are not anticipated
- MBTA service will be uninterrupted



Estimated Project Next Steps



**Review and Respond
to Comments from
This Meeting**
Fall 2022



**75% Design
Submission**
January 2023



**Environmental and
Wetlands permitting
Coordinating with
MassWildlife and
DCR**
**100% Design
Submission**
February 2023 –
November 2023



**Final Design
Submission**
February 2024



**Construction
Anticipated to Start**
Spring 2024



**How will we
keep you
informed?**

How To Reach Us

- Submit Written Comments to:

Carrie Lavallee, P.E., Chief Engineer

MassDOT Highway Division

10 Park Plaza

Boston, MA 02116

Attention: Major Projects, PROJECT FILE NO. 607342



- Submit Email Comments to:
Massdotmajorprojects@dot.state.ma.us
- For Project Information Visit the MassDOT Design Public Hearing Website at:
<https://www.mass.gov/massdot-highway-design-public-hearings>
or use the QR Code at the right.



**Questions and
discussion**

Share Your Questions and Comments



- Submit your questions and comments using the Q&A button



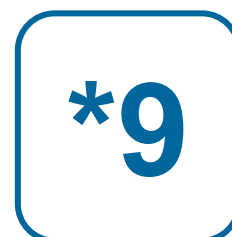
- “Raise your hand” to be unmuted for verbal questions, (Alt + Y to raise your hand)



- Please state your name before your question



- Please share only **1** question or comment at a time, limited to **2** minutes, to allow others to participate.



- To ask a question via phone, dial *9 and the moderator will call out the last 4-digits of your phone number and unmute your audio when it is your turn.

Please be advised that all Q&A and comments are subject to disclosure for public records, therefore use these functions for project-related business only.



Thank You

*Route 28 at Chickatawbut Road
Intersection Improvement Project
Milton, MA*

Zoom: October 27, 2022

Project File No. 607342

Project Manager: Massdotmajorprojects@dot.state.ma.us