



Winnetuxet Road Bridge

Thank you for joining us.

This meeting will begin shortly.





Winnetuxet Road Bridge over Winnetuxet River

Bridge Replacement

Bridge No. P-14-001

Virtual Public Hearing | August 29, 2023, | 6:30 pm

Project File 609435



Zoom Hearing Controls



- Ask a question and share comments



- Raise your hand - *9 for users dialing in and Alt + Y to raise your hand



- If you are unable to access the internet or are having technical problems, please call into the meeting at +1 646 931 3860, Webinar ID: 857 7517 0943



Live Transcript

- Closed captioning automatically generated by Zoom

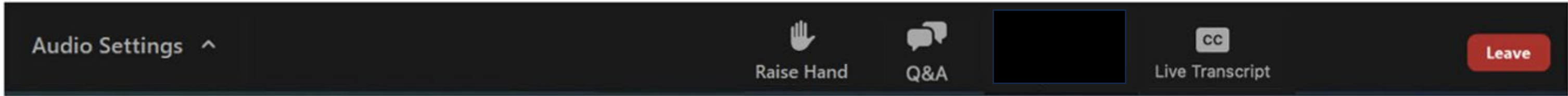


- Use the View button in the upper right-hand corner to adjust the meeting view settings to your preference



If you have trouble with the meeting technology during the presentation, please call:

[+1.888.799.9666]



Public Hearing Notes and Procedures

Public record

- While this virtual public hearing is not being recorded by zoom, MassDOT may choose to retain and distribute the images, audio and the Q&A transcript from this hearing.
- All parts of this hearing are considered public record.
- If you are not comfortable being part of the official record, please refrain from using the Q&A feature or you may choose to excuse yourself from the hearing. Information from this hearing will be posted on the Mass.gov website.

Important notes

- Your microphone and webcam are automatically disabled upon entering the hearing.
- This hearing will be open to questions and answers at the end of the presentation.
- Please take time to respond to our survey at the end of the presentation. Your feedback is important.

Notice of MassDOT's policy on diversity and civil rights

- All MassDOT activities, including public meetings, are free of discrimination.
- MassDOT complies with all federal and state civil rights requirements preventing discrimination based on sex, race, color, ancestry, national origin (limited English proficiency), religion, creed, gender, sexual orientation, gender identity or expression, or veteran's status.
- We welcome the diversity from across our entire service area. If you have any questions or concerns, please visit <https://www.mass.gov/nondiscrimination-in-transportation-program> to reach the Office of Diversity and Civil Rights.

All questions and comments are welcome and appreciated, however we do request that you refrain from any disrespectful comments.

Presentation Participants

MassDOT

- **Project Manager:** Harry Adolphe
- **District 5:** Jason Walters
- **ROW Agent:** Craig Sheehan
- **MassDOT Producer:** Roy Kirwa, Raissah Kouame
- **Stenographer:** Emma Gilliam (Advanced Court Reporting)

Town of Plympton

- **Highway Superintendent:** Rob Firlotte

Design Consultant, AECOM

- **Project Manager:** Kristina Hanes
- **Civil Engineer:** Jeff DeInnocentis

Agenda



- 1 Why was this project initiated?
- 2 What alternatives were considered?
- 3 How has the design progressed
- 4 How will your property be impacted?
- 5 How will bicyclists and pedestrians be impacted?
- 6 What are the environmental, cultural resource and community impacts?
- 7 What is the construction approach?
- 8 How will the road user be affected?
- 9 Questions and discussion

Thank You for Your Support

Local Newspaper Advertisement:

Plympton Halifax Kingston Express

MassDOT Facebook and Twitter:

 @MassDOT

 MassDOT

Town of Plympton

The **PLYMPTON-HALIFAX**
EXPRESS
A Publication of Anderson Newspapers, Inc.



Thank You for Your Support

Plymouth RMV Service Branch



Community Organizations:

Old Colony Planning Council

Plymouth Chamber of Commerce

Camp Promise

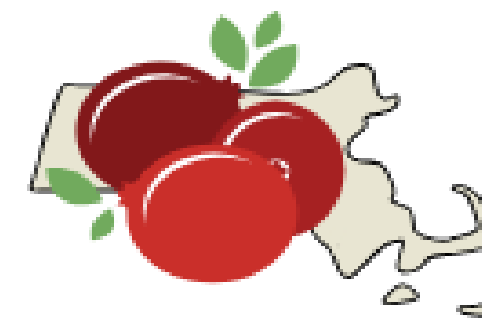
Cape Cod Cranberry Growers' Association



The Plymouth Area
CHAMBER OF COMMERCE
LEARN • CONNECT • SUCCEED



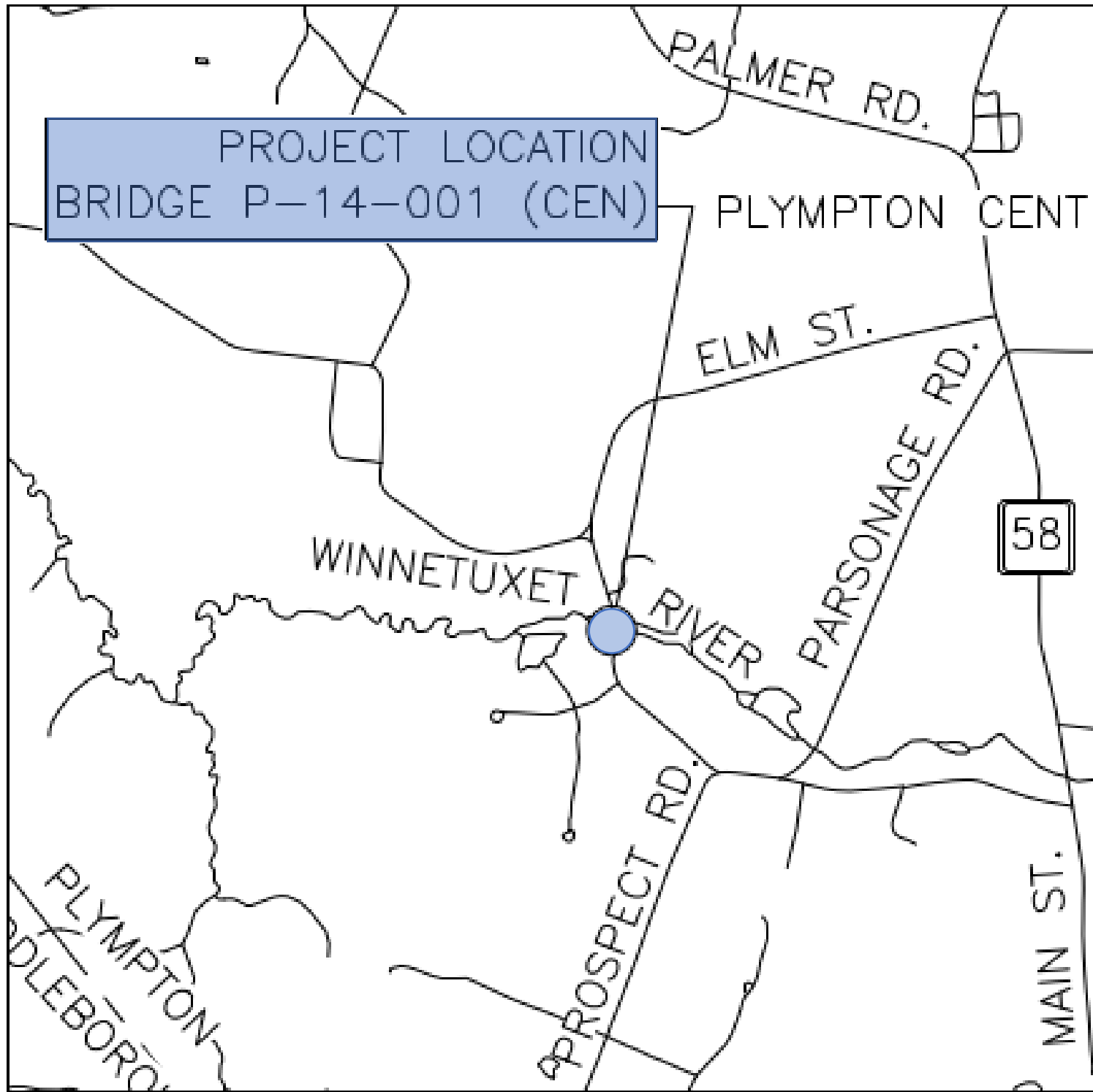
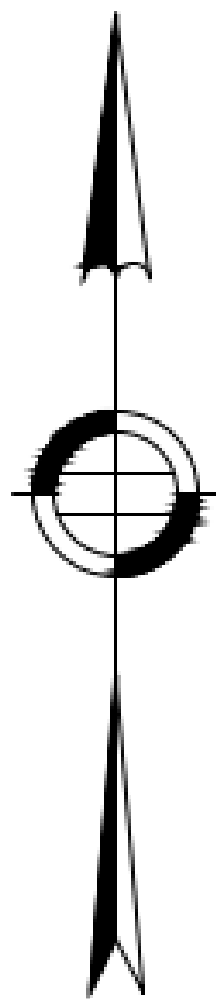
OLD COLONY
PLANNING COUNCIL



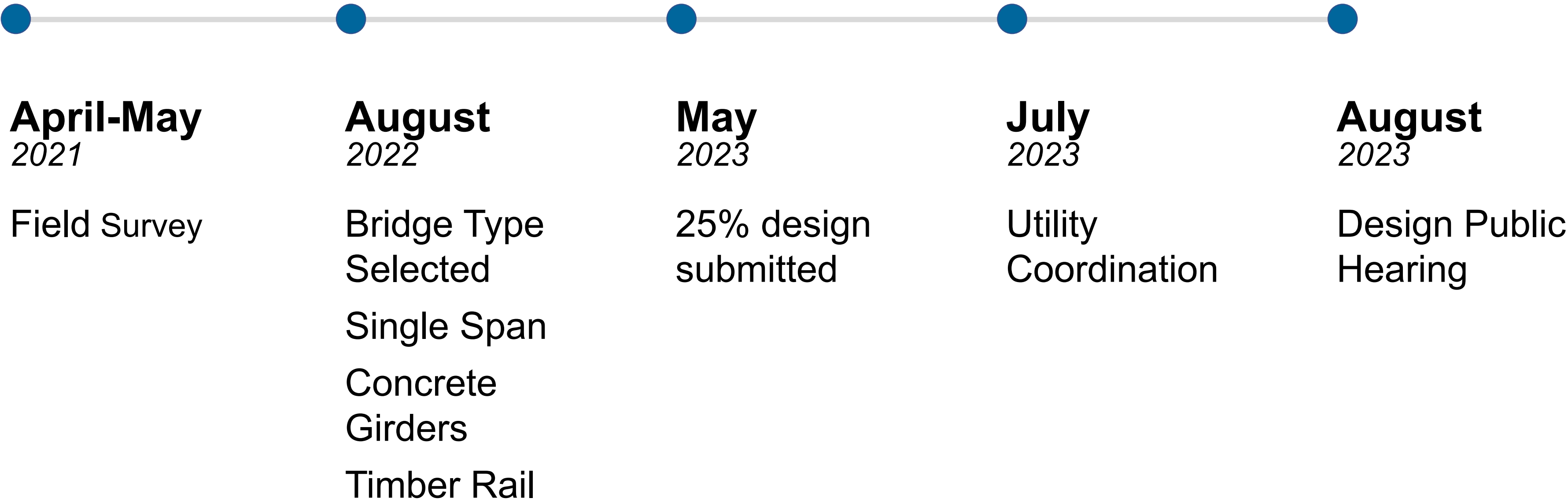
Massachusetts
cranberries



Project Location



How did we get here?





**Why was this
project
initiated?**

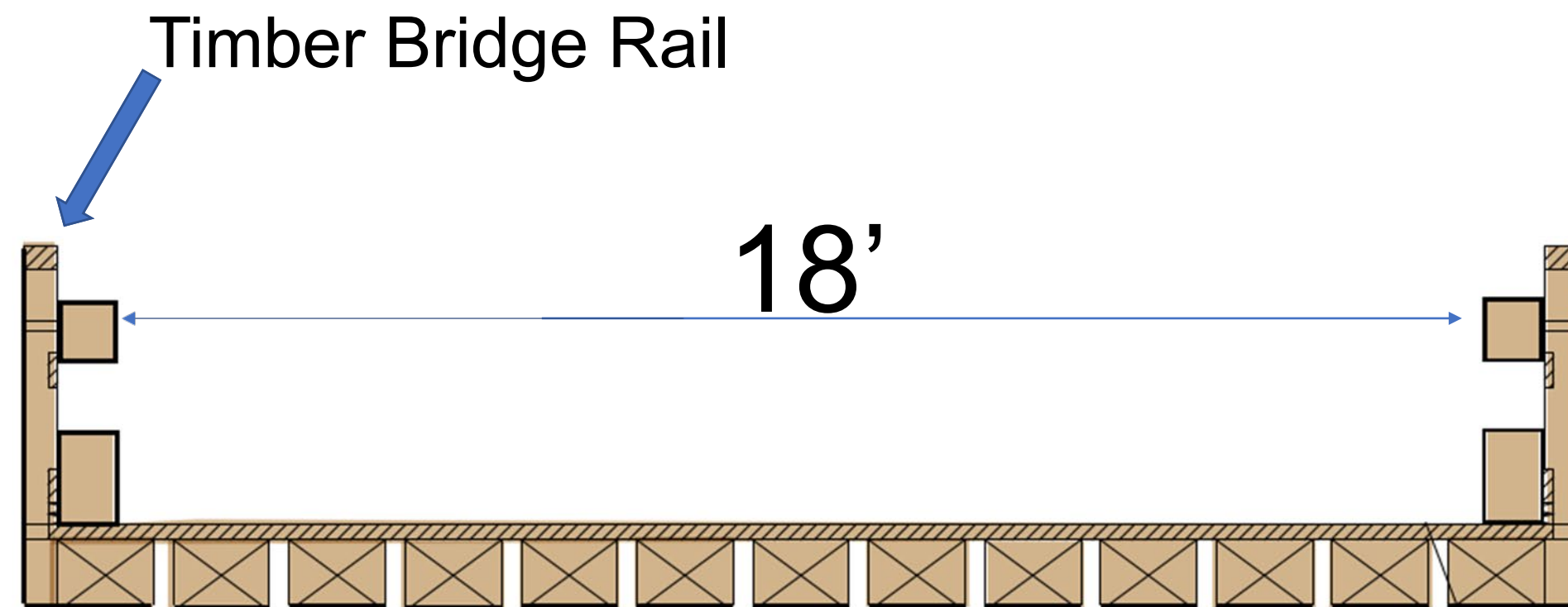
Project Need

- Timber Bridges are estimated to last 20-30 years.
- The existing superstructure was constructed in 2002.
- The existing abutments are over 100 years old.
- Substandard Load Rating with posted Weight limits
- Substandard approach guardrail

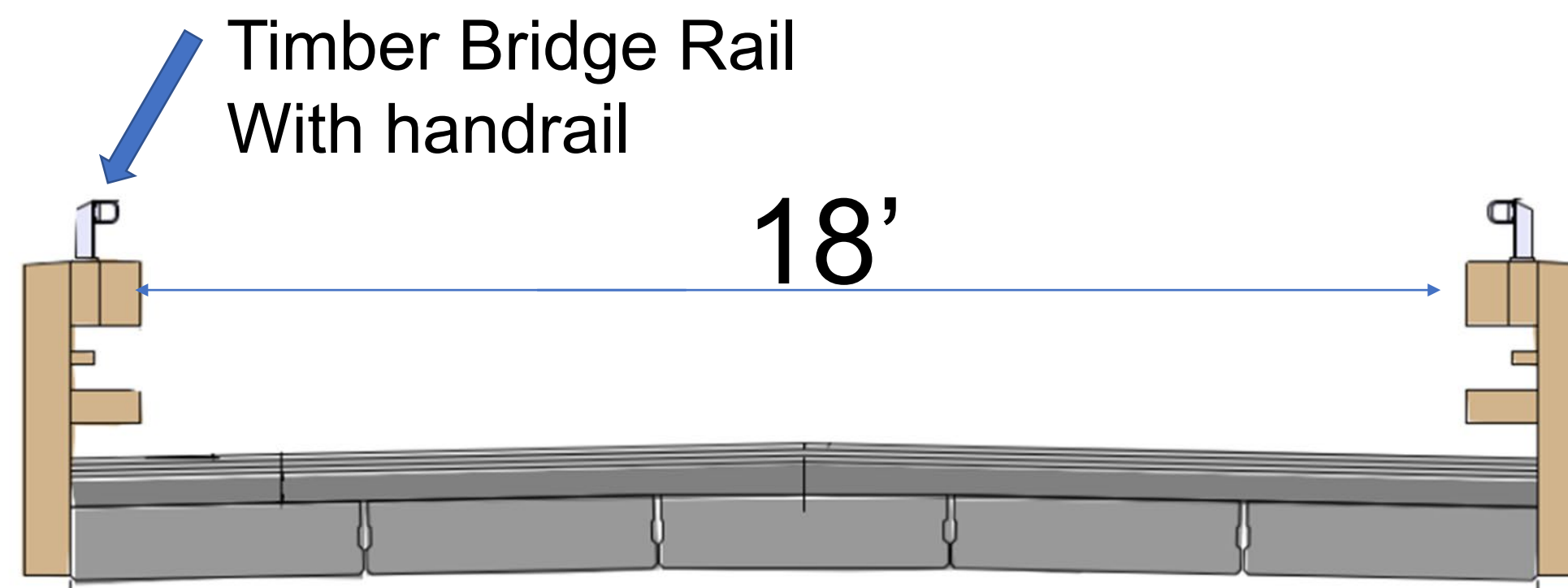




**What do we
want to
accomplish?**



Existing Bridge



Proposed Bridge

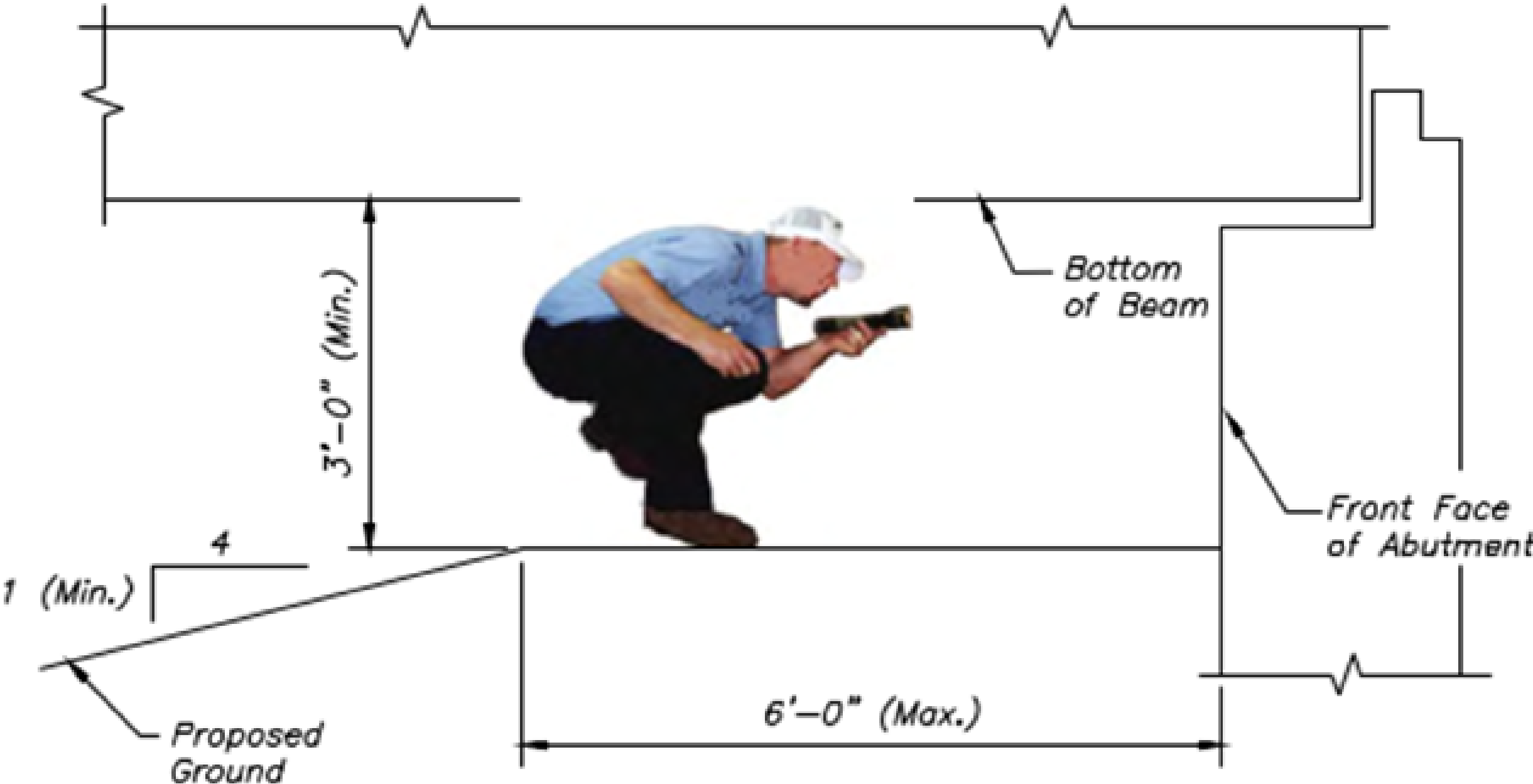
Project Scope

- Replace Bridge Deck and Beams
- Replace Abutments
- Remove Pier
- Scour prevention measures
- Maintain existing cross section width
- Limit environmental impacts



**What
alternatives
were
considered?**

MassDOT Inspection Requirements

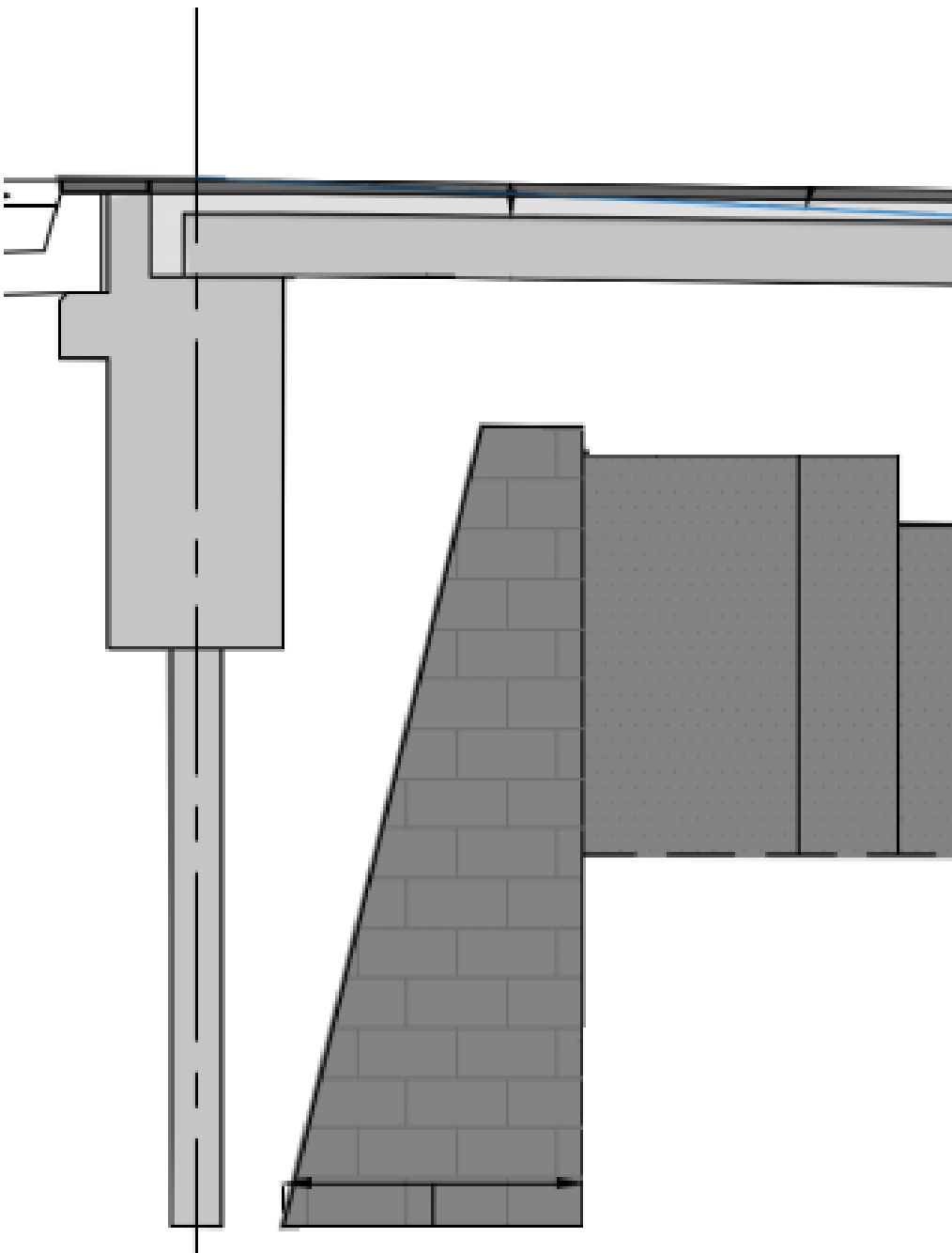


Existing Abutments



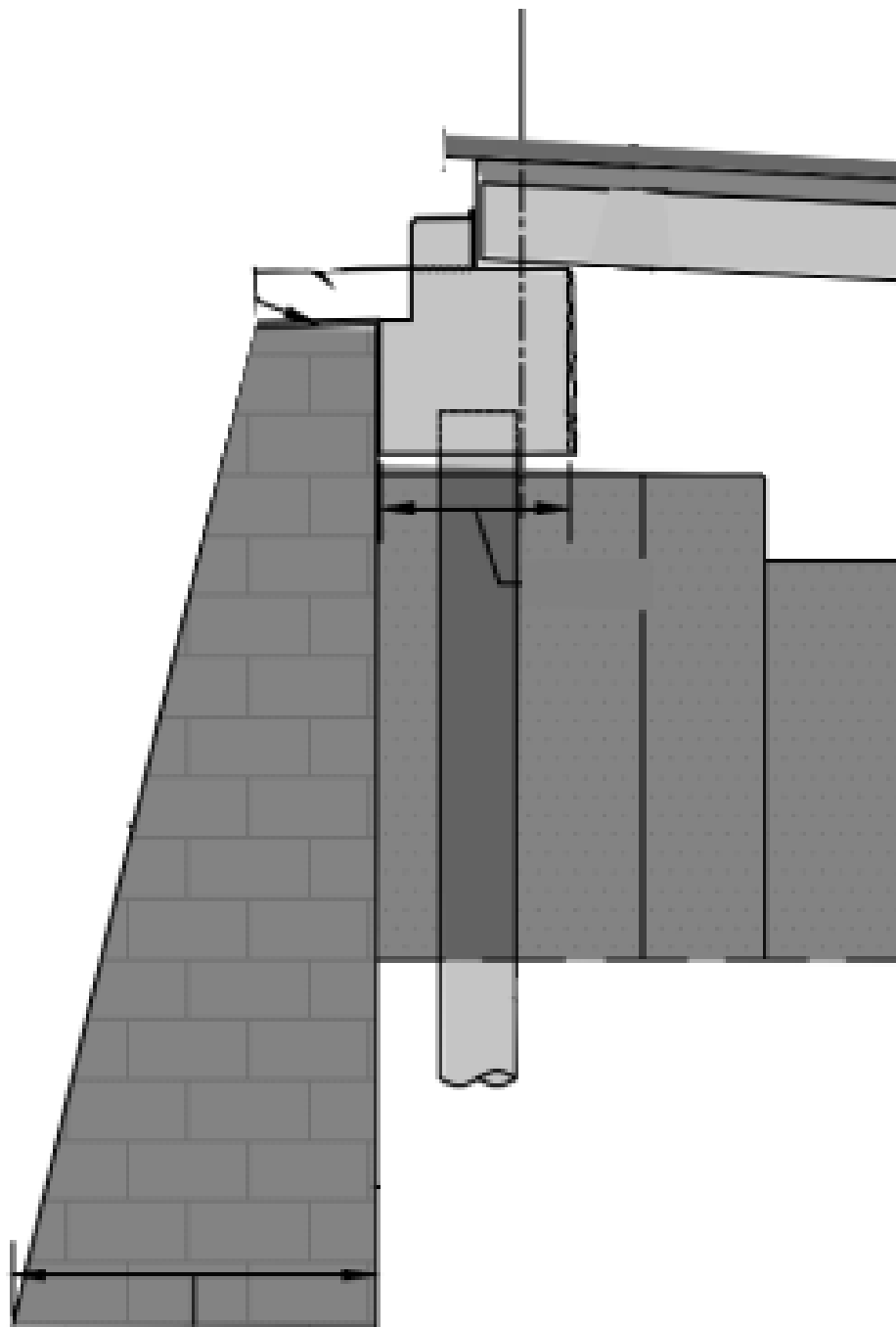
Abutment behind

Longer span required



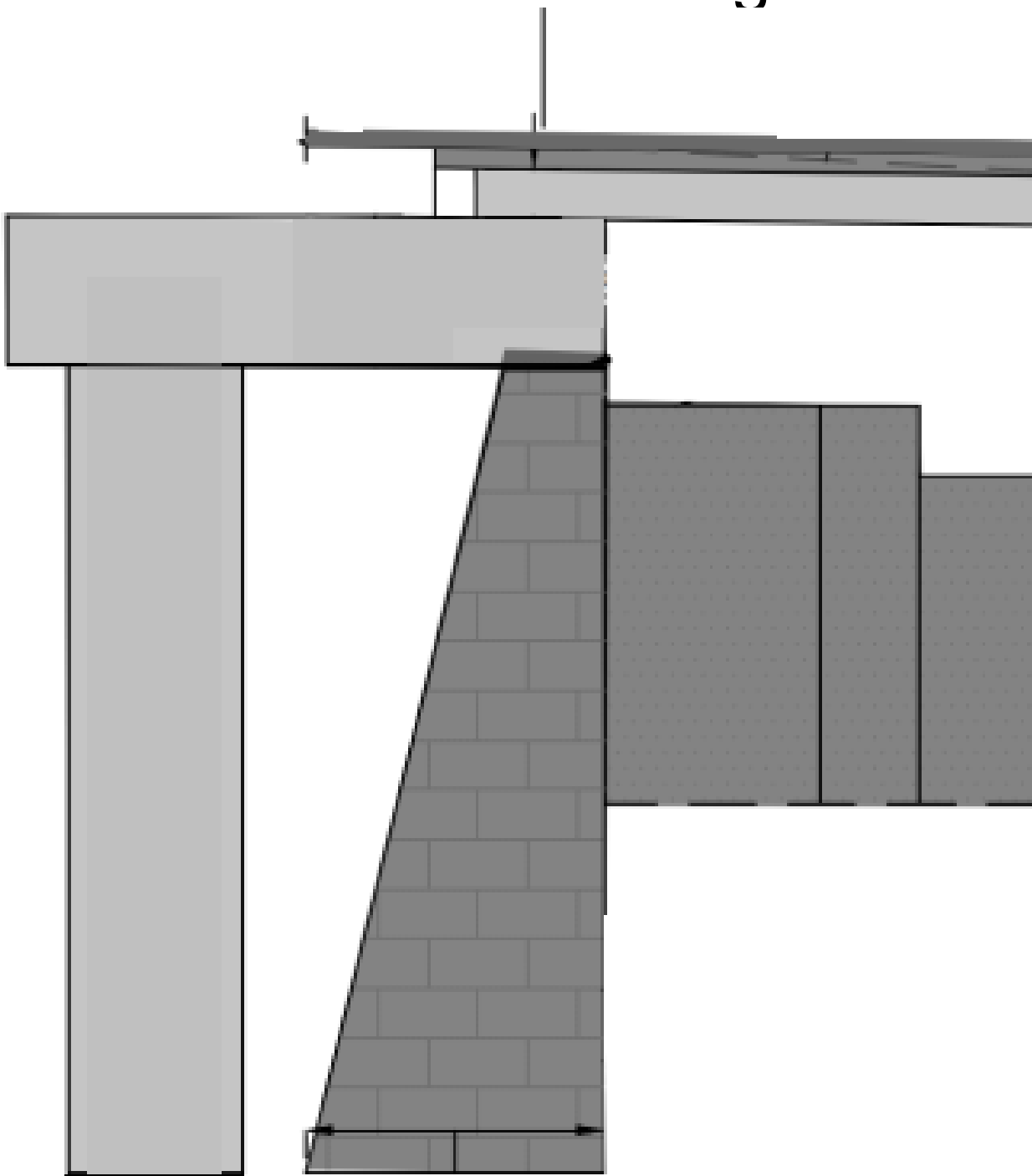
Abutment in front

In waterway

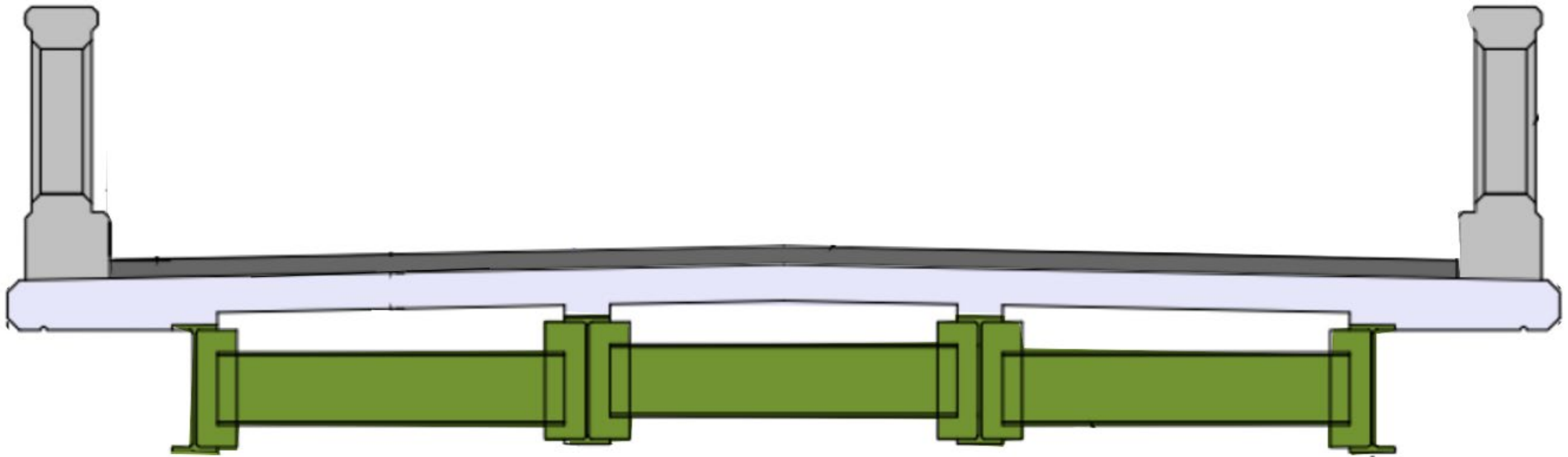


Abutment over

Unconventional design

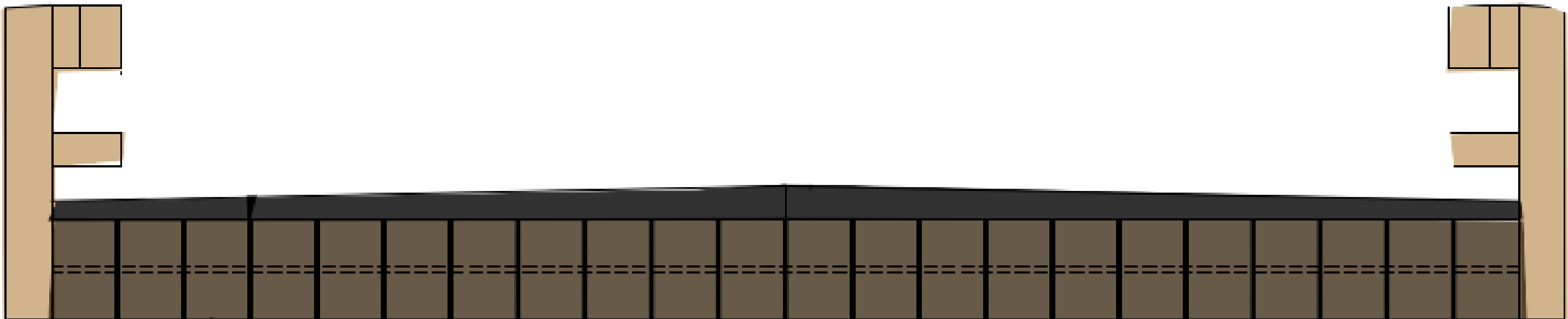


Bridge Design Alternatives



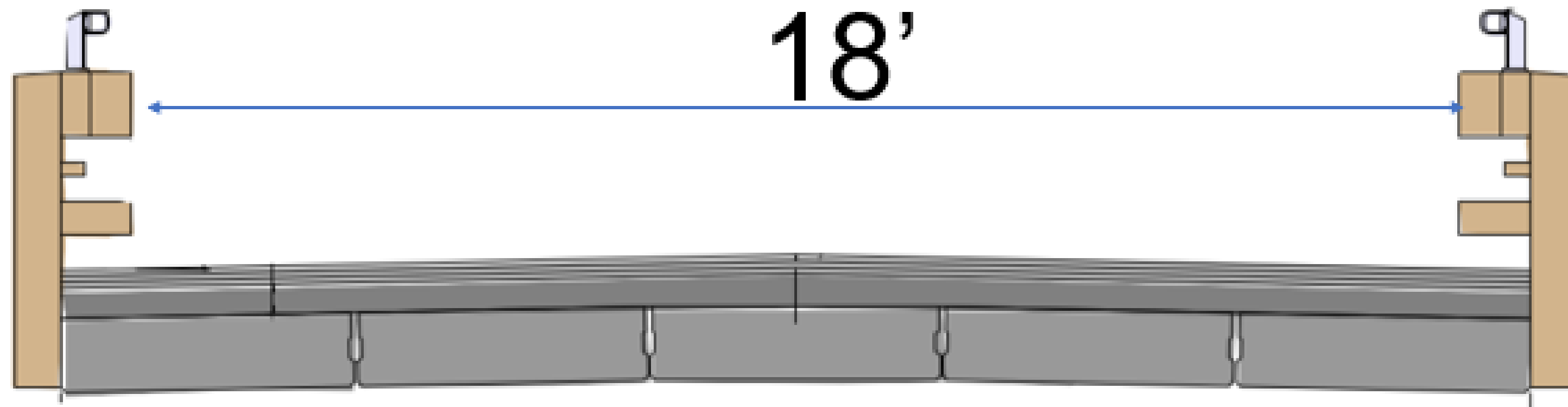
Steel Girders

Bridge Design Alternatives



Timber Beams

Bridge Design Alternatives



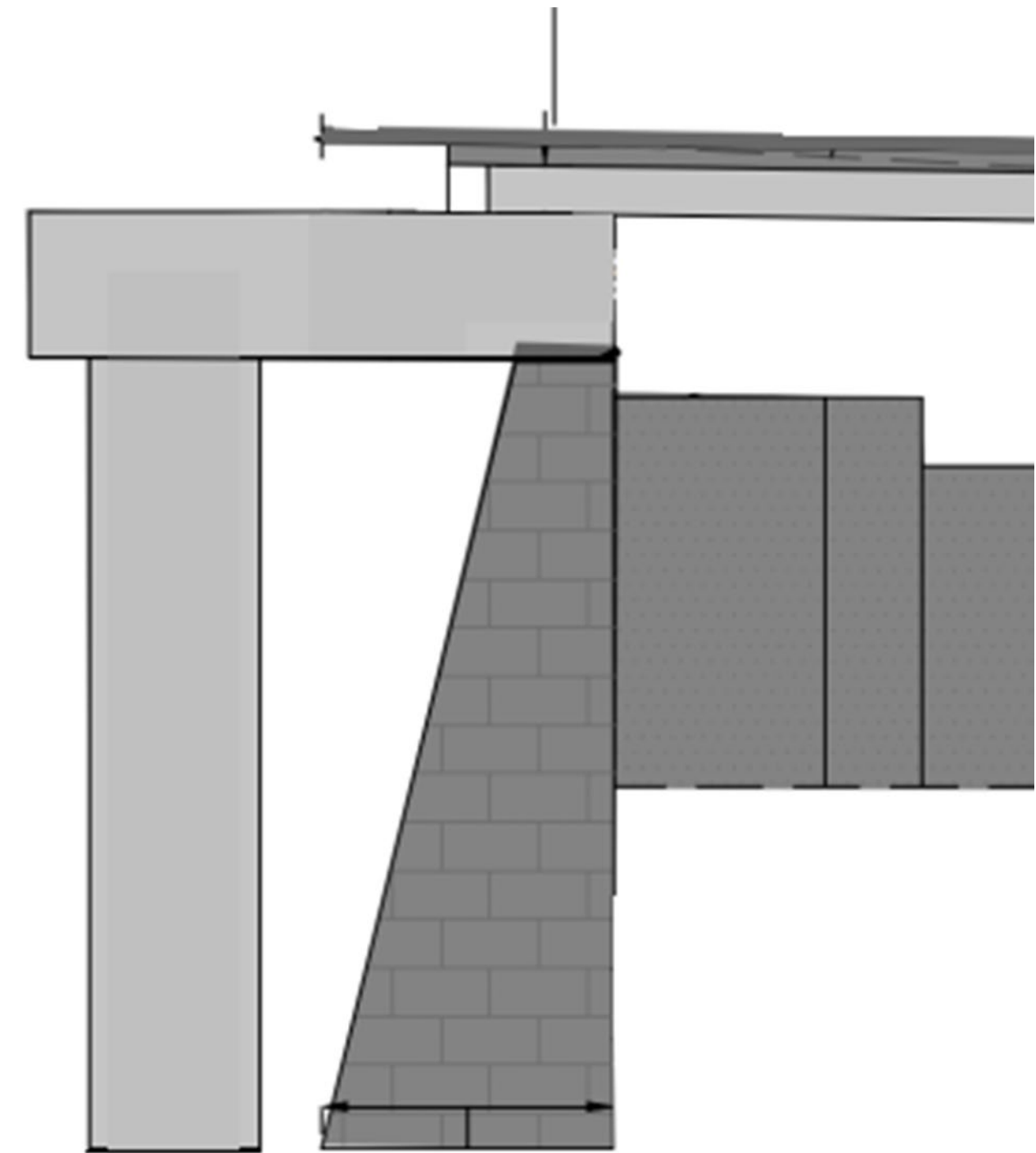
Prestressed Concrete Beams



What is the preferred alternative?

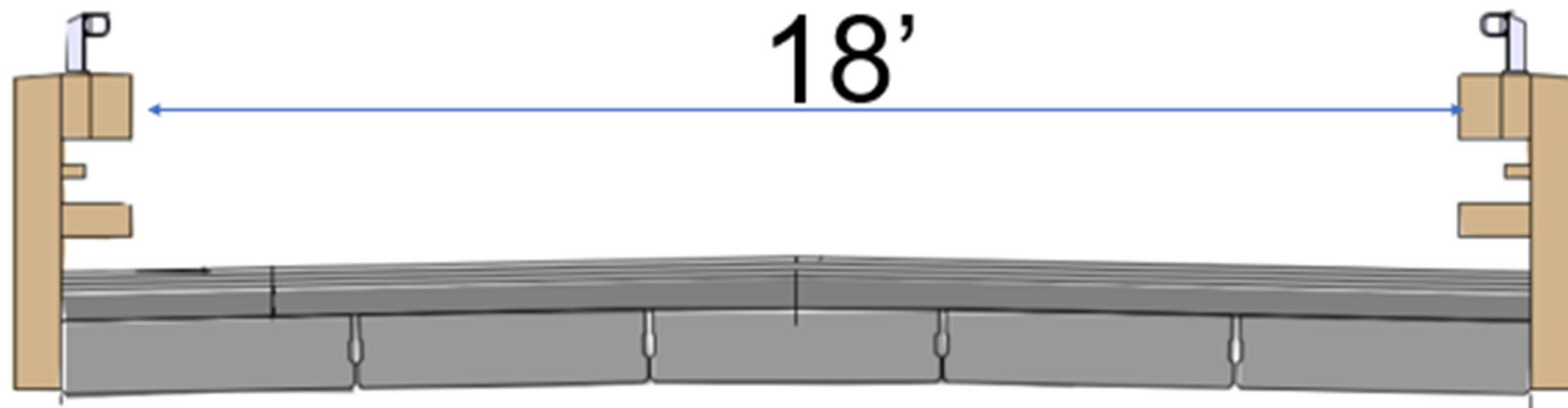
Abutments

- Unconventional Abutment above existing
 - Does not affect Roadway elevations
 - Does not impact flood elevations



Superstructure

- Prestressed Beams
 - Shallow Beams avoid roadway revisions
 - More Durable than timber
 - Can utilize timber rail for aesthetics





**How will your
property be
impacted?**

Preliminary Right of Way (ROW) discussion 25% Design Public Hearing

- The Town of Plympton is responsible for acquiring all necessary rights in public land for design, construction, and implementation of this project.
 - Fee takings, permanent easements and/or temporary construction easements may be required.
- Affected property owners will be contacted by personnel from the ROW Bureau or consultants representing the responsible agency.
 - Property owners are protected under Massachusetts General Laws, primarily Chapter 79.
- Preliminary ROW drawings will be available at 23 Palmer Road, Plympton, MA 02367 for public review and comment.

At this stage of design, the Right of Way process has not been finalized. This meeting is an opportunity for the public to comment on any impacts to properties.



**How will
bicyclists and
pedestrians
be impacted?**

Bicyclists and Pedestrian Impacts





**What are the
environmental,
cultural
resource, and
community
impacts?**

Environmental Impact and Permitting

- No known Cultural or Historic Resources
- Apply for any necessary Environmental Permits
- Use of Best Management Practice (BMP)
 - Sediment Control Barrier
 - Deep Sump Catch Basins
 - Shielding under the bridge during demolition
- No wetland impacts



**What is the
construction
approach?**

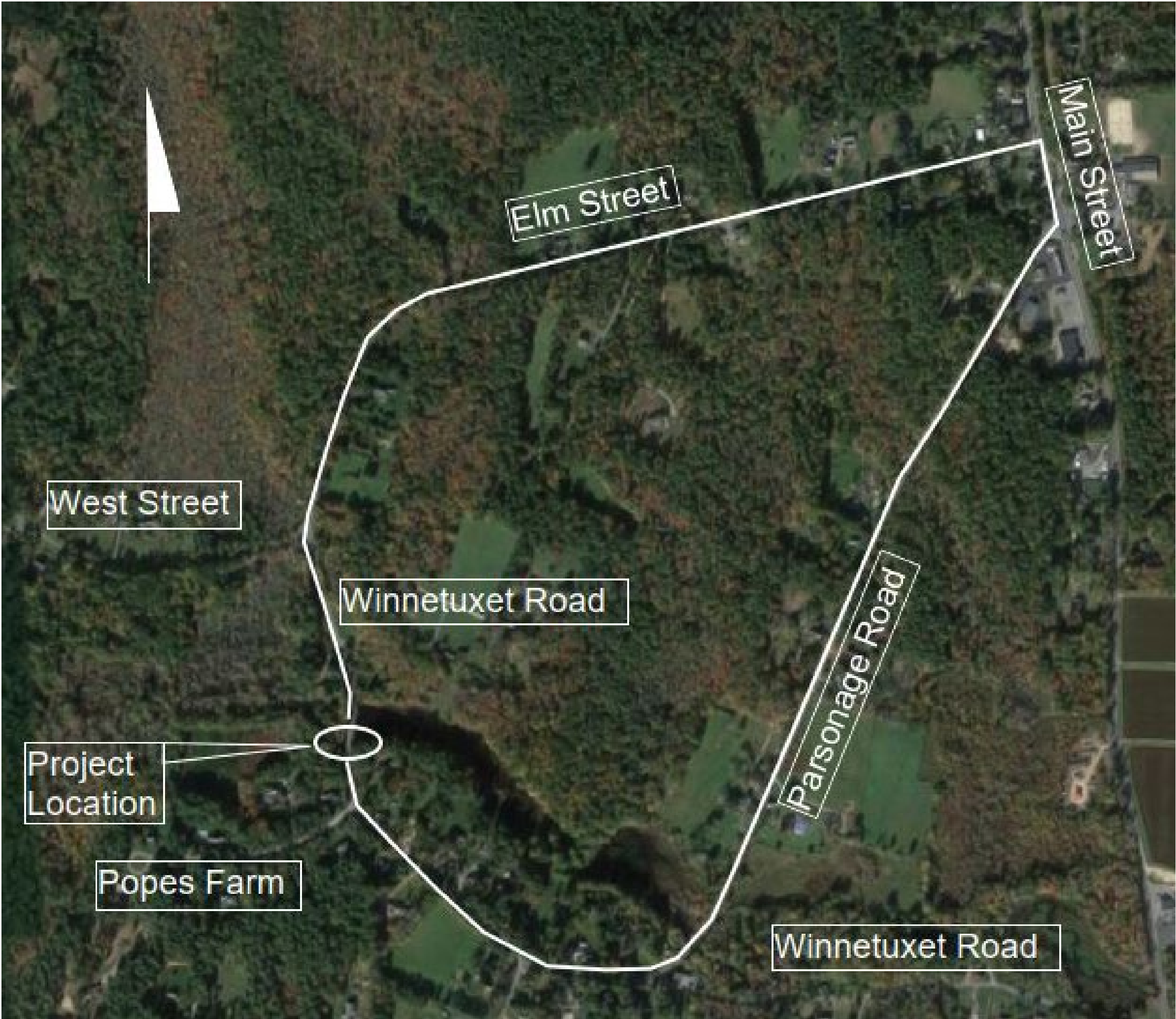
Proposed construction approach: Design-Bid-Build

- Estimated One Season Construction Time
- Set up Traffic Control for Detour Route and Bridge Closure
- Overhead Utility Relocation
- Demolish Existing Bridge
- Construct two new Abutments, Approach Wingwalls and Guardrail Transitions
- Erect and Place Adjacent Precast Deck Beams
- Pour Concrete Bridge Deck
- Install Bridge Railing and Approach Guardrail
- Prepare Approach Roadway Work
- Pave Asphalt over Bridge Deck and Approaches.
- Open Bridge to Traffic



**How will the
road user be
affected?**

Construction Detour





How has our
design
progressed?

Our next steps



Summer 2023
Design Public
Hearing



Fall 2023
75% Submittal



Winter 2024
100% Submittal



Spring 2024
PS&E Submittal



Summer 2024
Advertise Project



**How will we
keep you
informed?**

How to reach us

- For project information visit the MassDOT Upcoming Events for Highway Division web site at <http://www.mass.gov/orgs/highway-division/events> or use the QR Code:
- Submit email comments to:
MassDOTProjectManagement@dot.state.ma.us
- Submit written comments to:
Carrie Lavallee, P.E., Chief Engineer
MassDOT
10 Park Plaza
Boston, MA 02116
Attention: PROJECT MANAGEMENT, PROJECT FILE NO. 609435





Questions and answers

Questions and Answers



- “Raise your hand” to be unmuted for verbal questions (Alt + Y)



- Submit your questions and comments using the Q&A button (Alt + H)



- Please state your name before your question



- Please share only 1 question or comment at a time, limited to 2 minutes, to allow others to participate



- To ask a question via phone, dial *9 and the moderator will call out the last 4-digits of your phone number and unmute your audio when it is your turn



- Please take a few minutes to complete the survey after the meeting to let us know how your experience was with this virtual meeting

All questions and comments are subject to disclosure for public records. Please use these functions for project related business only.



Thank You

Bridge Replacement

Bridge No. P-14-001

Virtual Public Hearing | August 29, 2023, | 6:30 pm

Project File 609435

