



CHELMSFORD-LOWELL BRIDGE BUNDLE REPLACEMENT

*GORHAM ST. over I-495 &
WESTFORD ST. over I-495*

Public Information Meeting Date 03/26/2025 Time 6:00 PM

Project File No. 612631



Notice of MassDOT's policy on diversity and civil rights

- All MassDOT activities, including public meetings, are free of discrimination.
- MassDOT complies with all federal and state civil rights requirements preventing discrimination based on sex, race, color, ancestry, national origin (limited English proficiency), religion, creed, gender, sexual orientation, gender identity or expression, or veteran's status.
- We welcome the diversity from across our entire service area. If you have any questions or concerns, please visit <https://www.mass.gov/nondiscrimination-in-transportation-program> to reach the Office of Diversity and Civil Rights.

Thank you for attending our meeting. We appreciate your participation!

Agenda

1. Project Background
2. Project Goals
3. Construction Approach
4. Construction Impacts
5. Public Outreach
6. Questions



Westford St over I-495

Project Team:

MassDOT

- Aleksey Belov- Project Manager
- Jeffrey Lavallee- Assistant Construction Engineer
- Joe Stasio- Assistant Construction Engineer
- Brian Noel- Area Engineer MassDOT District 4
- Richard Apitz- Resident Engineer
- Dan Fielding- Legislative Liaison

Design-Build Team

- **S&R Corporation (headquartered in Lowell, MA)**
 - Eric Jones, Paul Darling, Shane Moores, Jody Prevost, Larry Gordon, Joe Auterio
- **Design Engineer: TranSystems**
 - Evan Lowell, Teresa Sandell
- **Community Outreach: RVA**
 - Regan Checchio, Kyle Olsen, Alice Scollins

Interpreters:

Khmer: Keto Tan

Portuguese: Bertolt
Cantalice

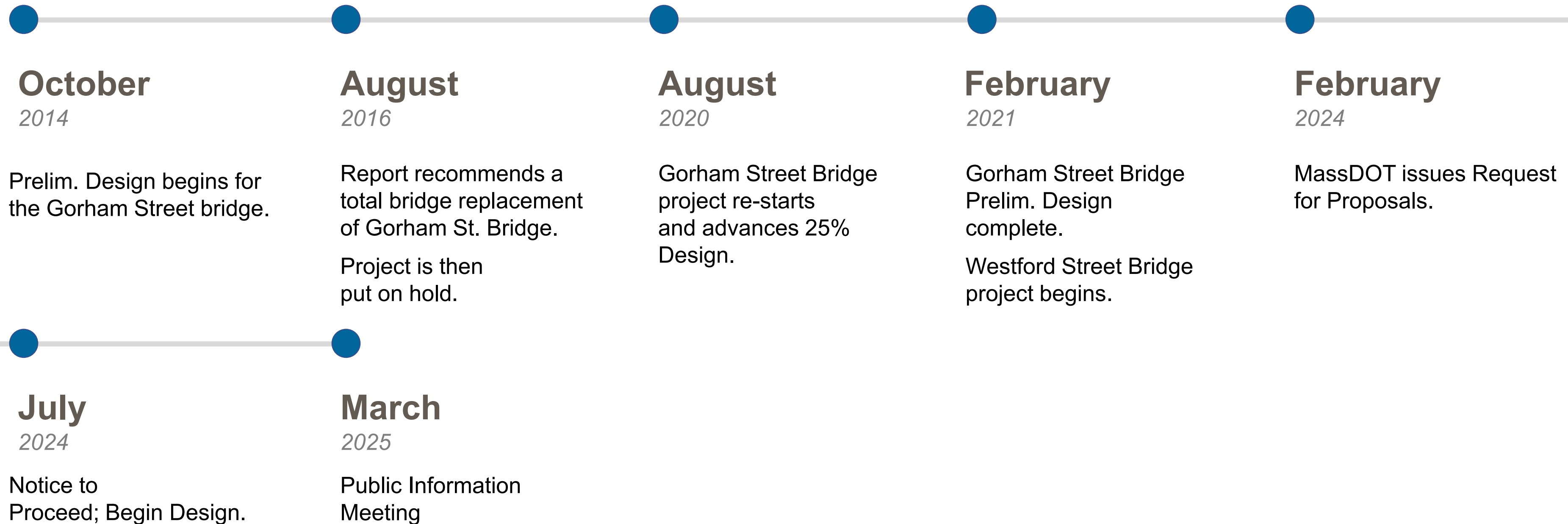
Spanish: Claudio
Ruiz

Mandarin/Cantonese:
Lewanna Li

Project Location



How did we get here





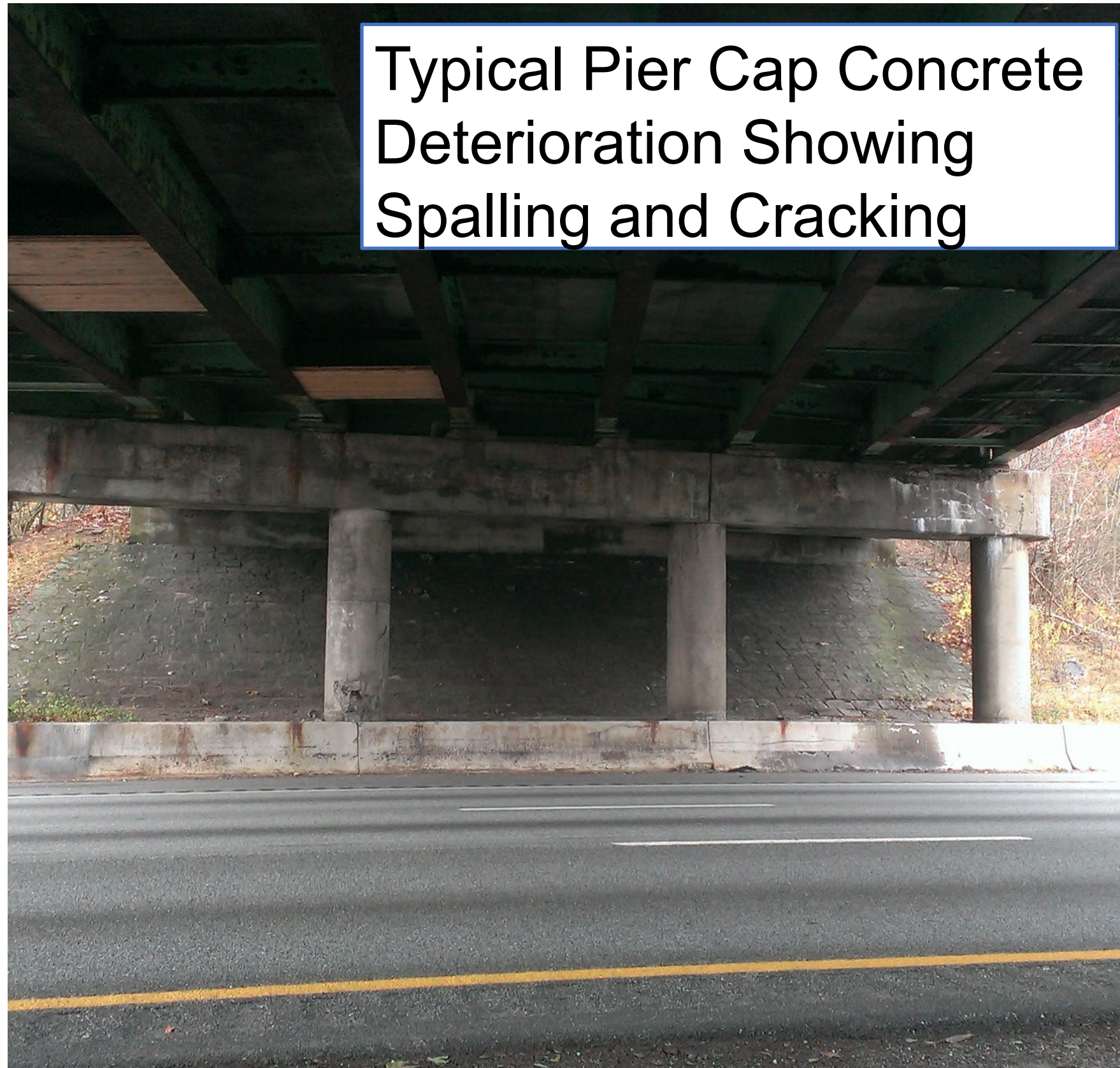
**Why was this
project
initiated?**

Gorham Street Bridge Steel Beams

Severe Deterioration to the steel beams and concrete bridge deck



Gorham Street Bridge Substructure



Typical Pier Cap Concrete Deterioration Showing Spalling and Cracking



Typical Pier Column Concrete Spalling and Exposed Rusting Reinforcement

Gorham Street Bridge: Existing Conditions

- Gorham Street Bridge lacks any bicycle accommodations
- Sidewalks are in poor condition with utility poles blocking the way



Westford Street Bridge: Existing Conditions

- Westford Street Bridge only has 1 sidewalk over the bridge.
- This sidewalk has no ramps at either end.
- There are no bicycle accommodations on Westford Street.



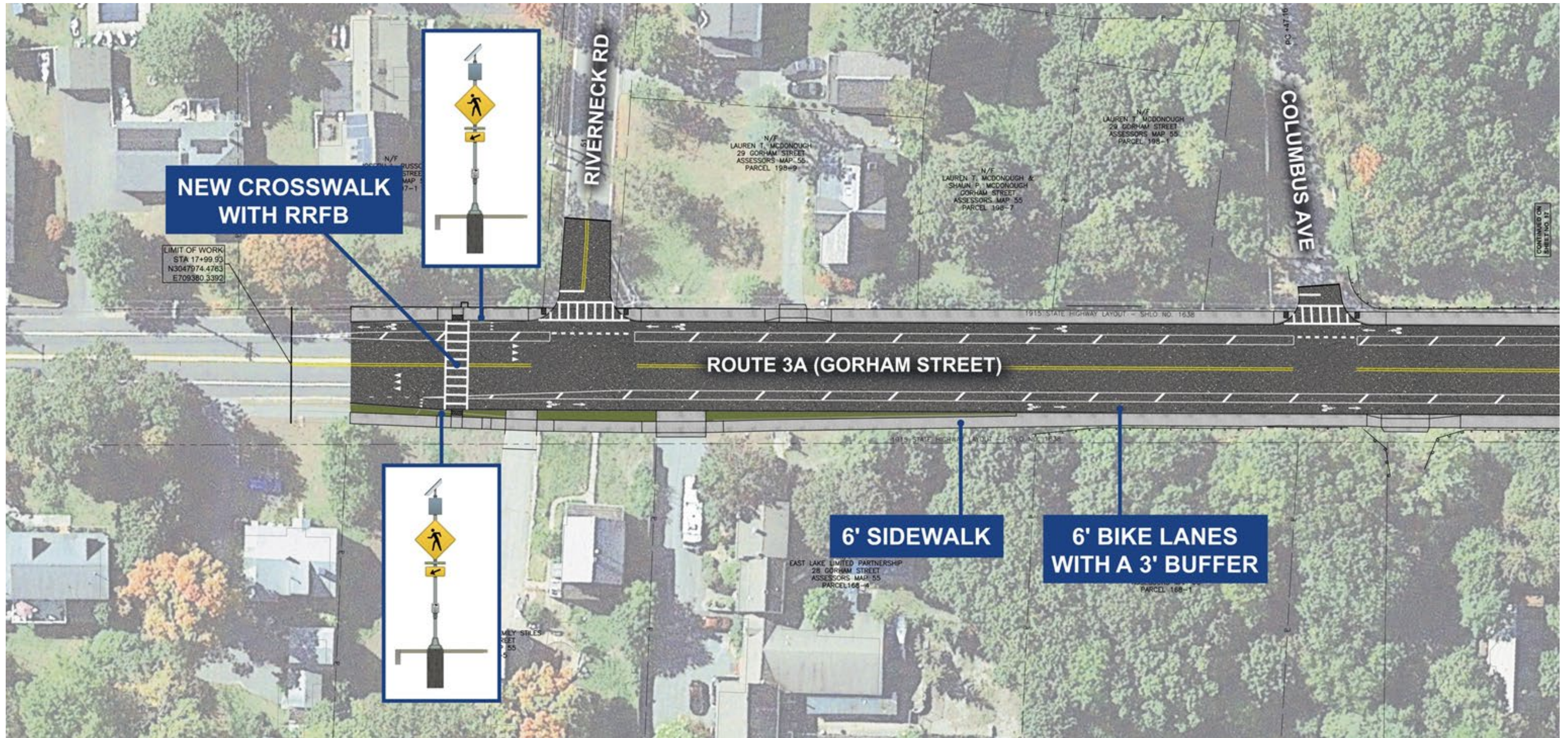


**What do we
want to
accomplish?**

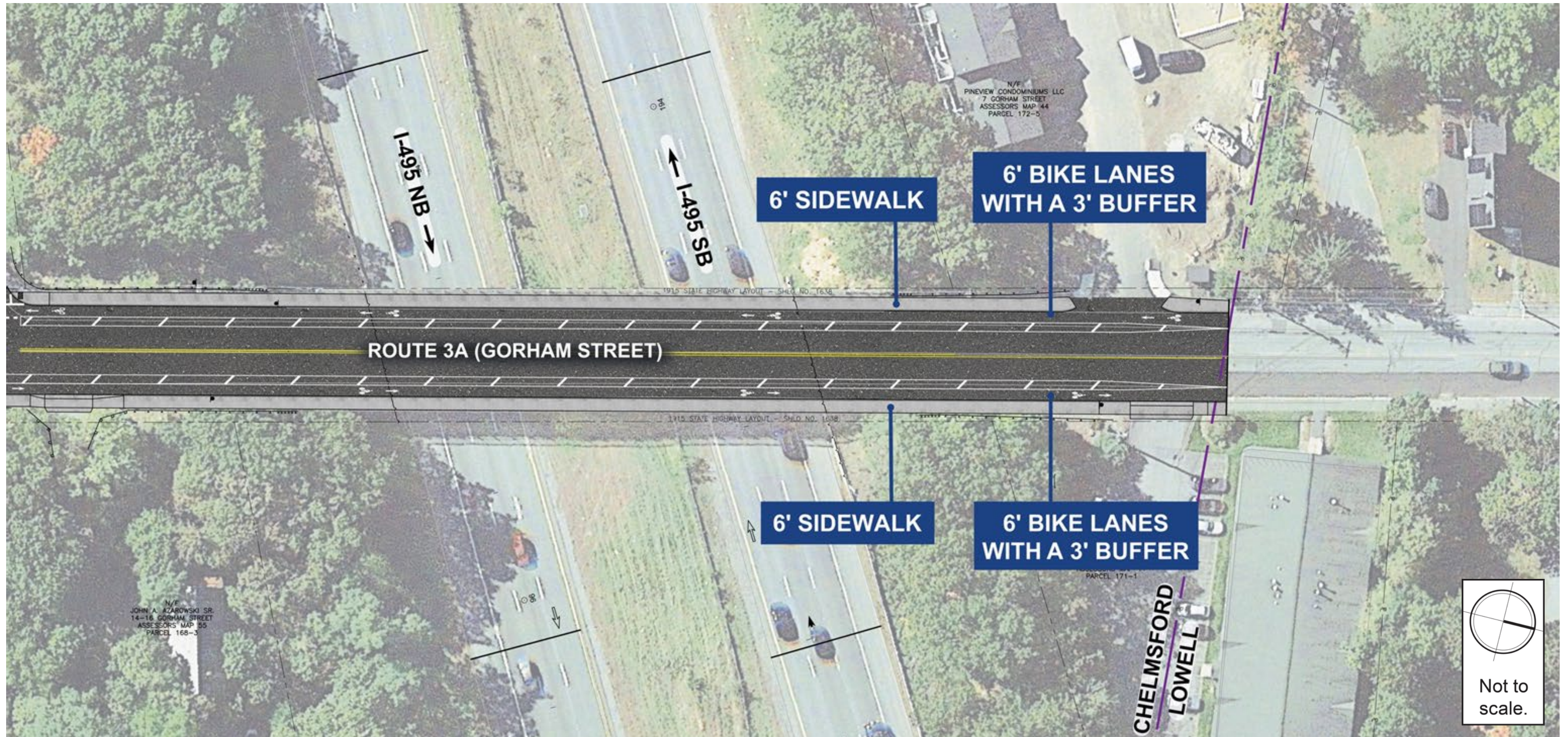
Project Goals

- Replace Structurally Deficient Bridges
- Provide new ADA-compliant sidewalks along both sides of the road within the project limits
- Add appropriate bicycle accommodations for each roadway within the project limits

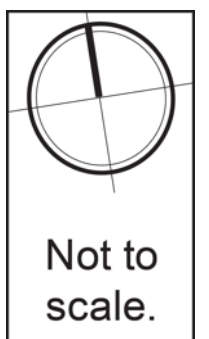
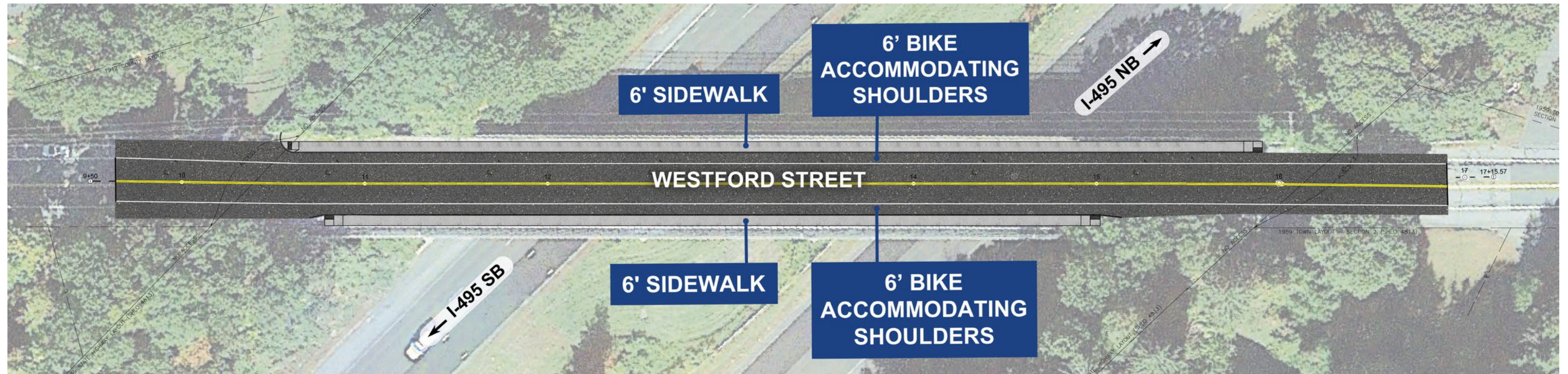
Gorham Street Bridge Proposed Layout

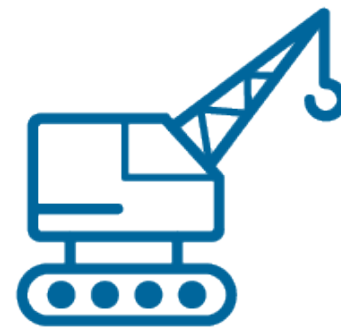


Gorham Street Bridge Proposed Layout



Westford Street Bridge Proposed Layout





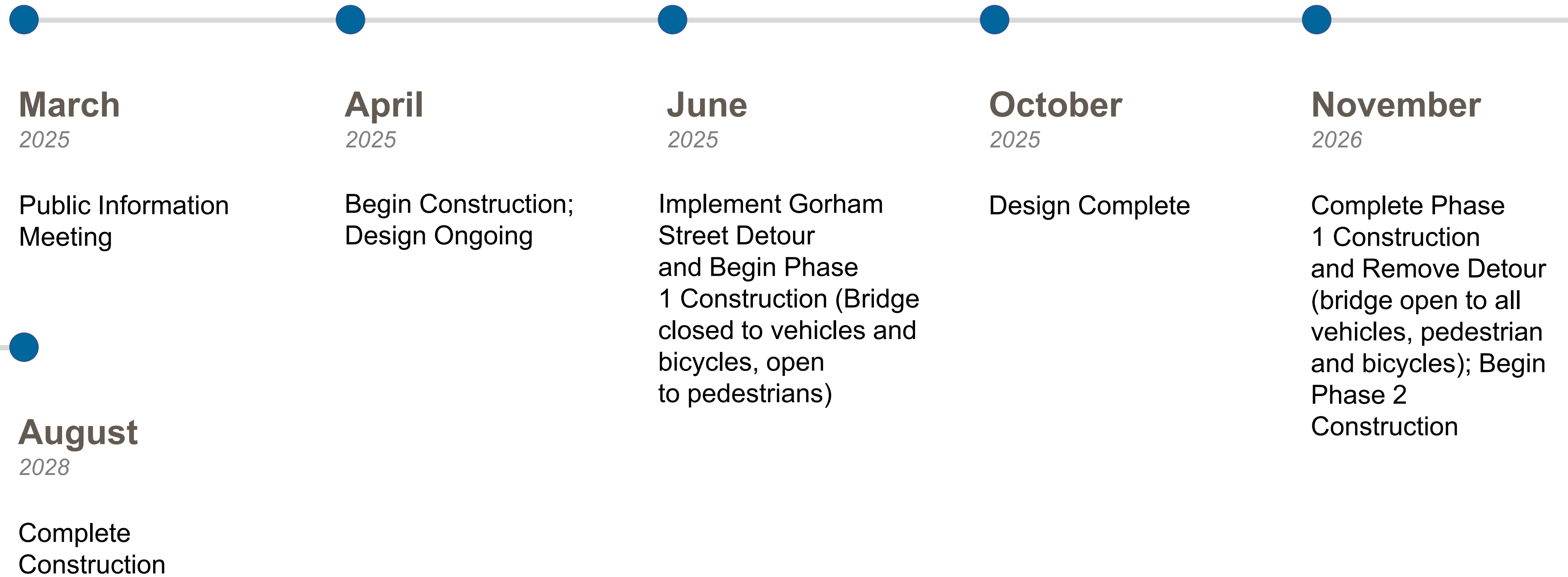
**What is the
construction
approach?**

Design Build

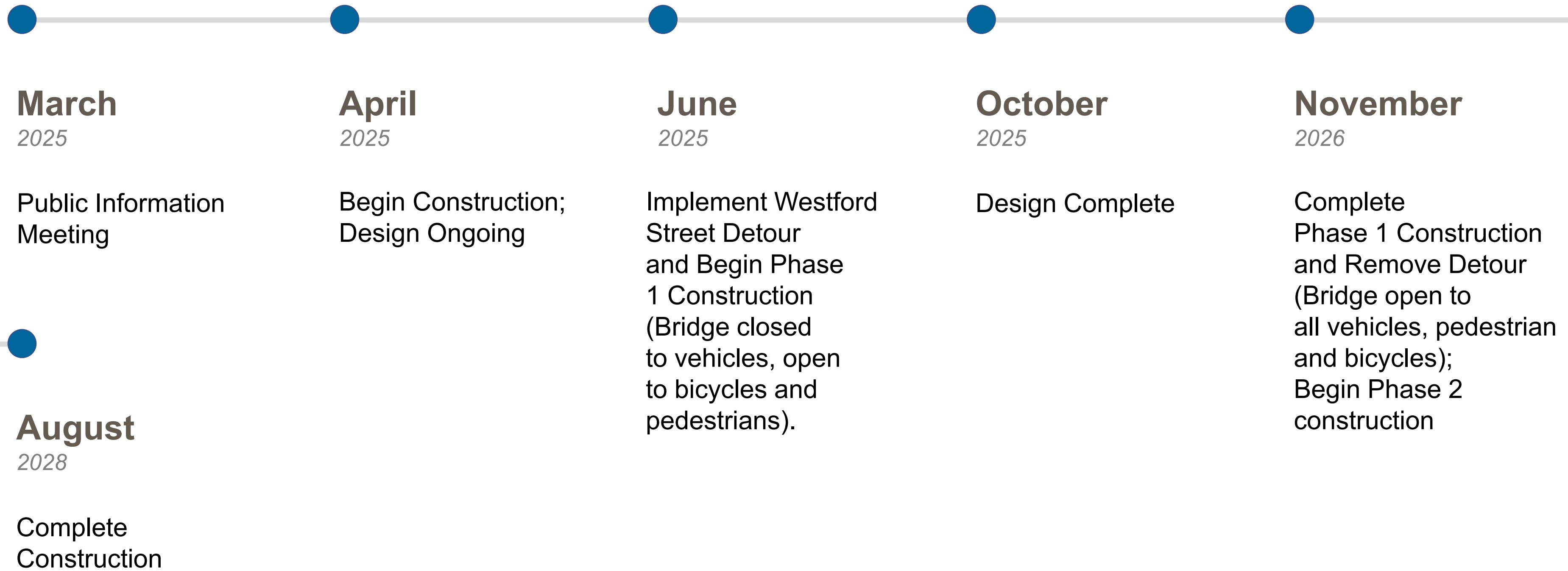
Allows the contractor and designer to work together on all phases of the project to

- Promote innovation
- Reduce project costs
- Expedite project delivery

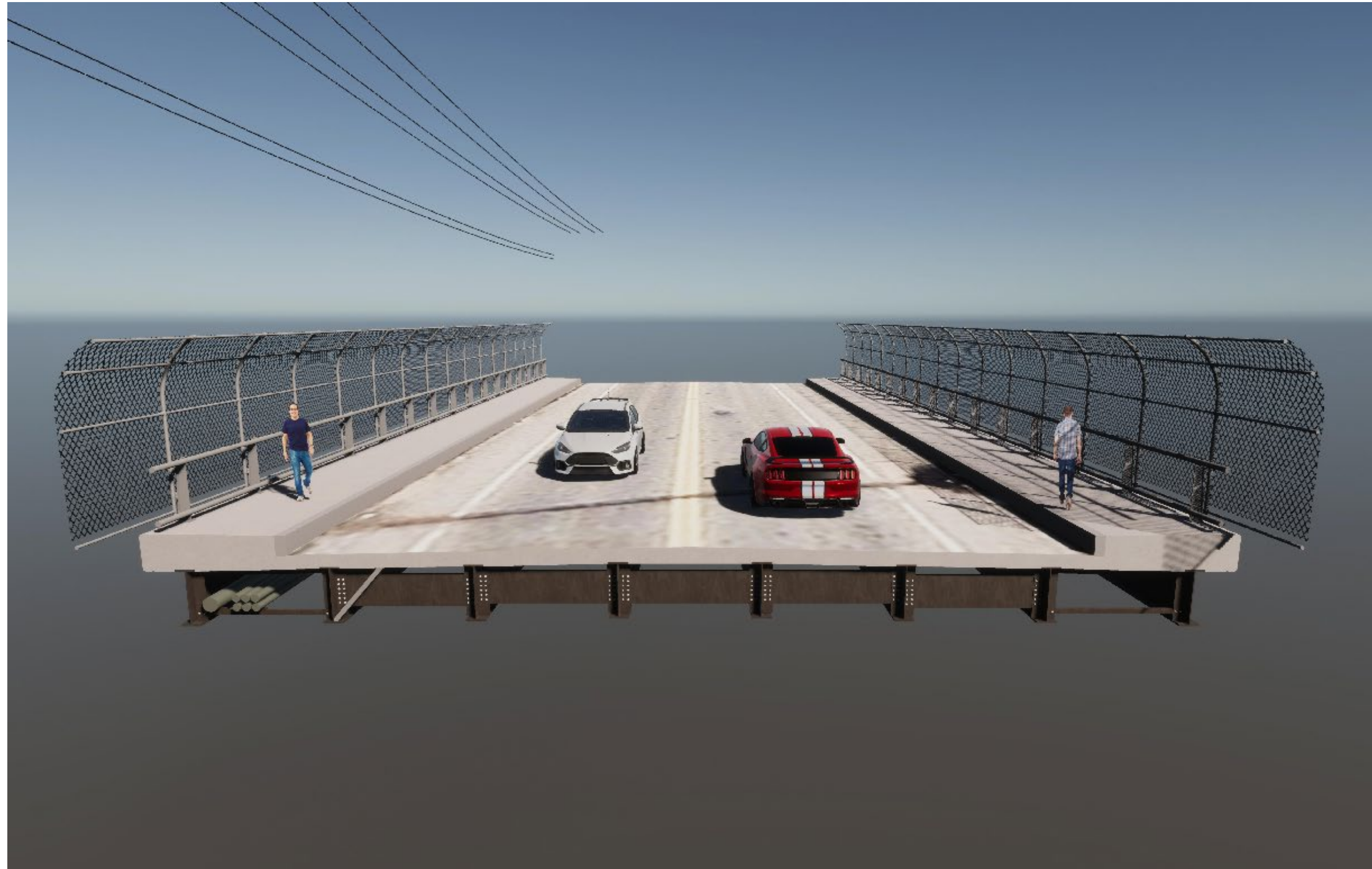
Gorham Street Bridge Construction Schedule



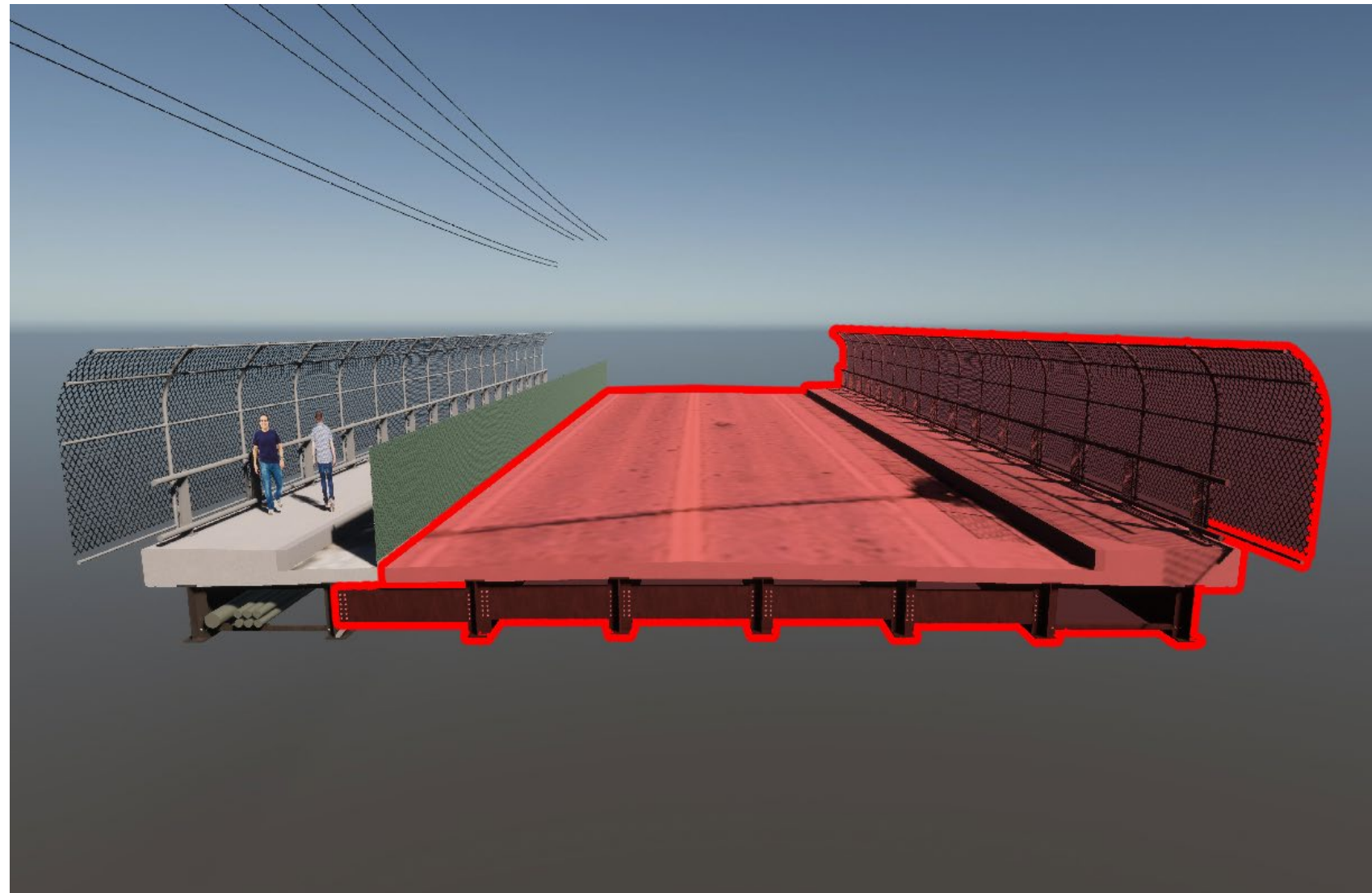
Westford Street Bridge Construction Schedule



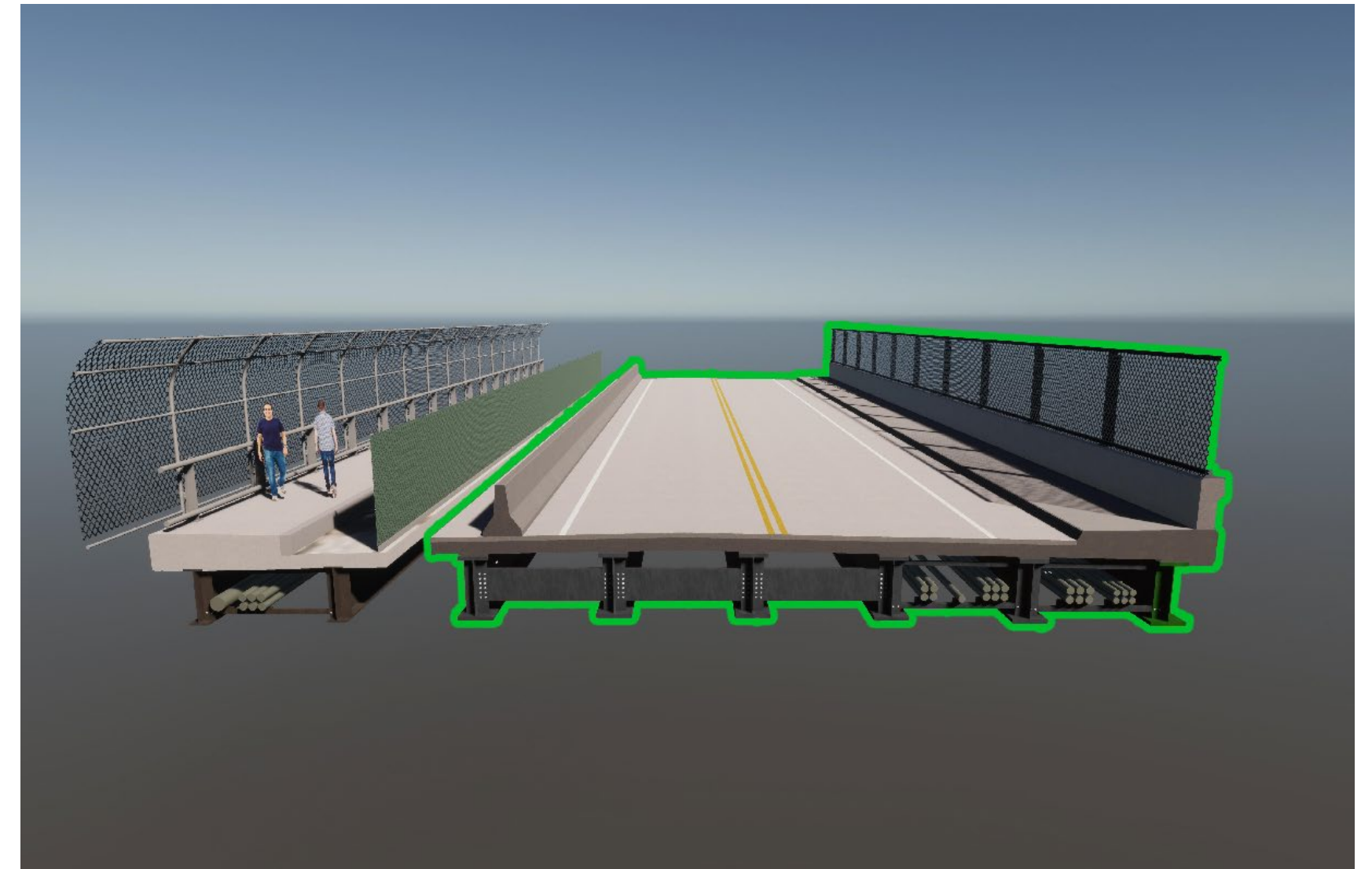
Gorham Street Bridge: Existing Configuration



Gorham Street Bridge Roadway Cross Section: Phase 1

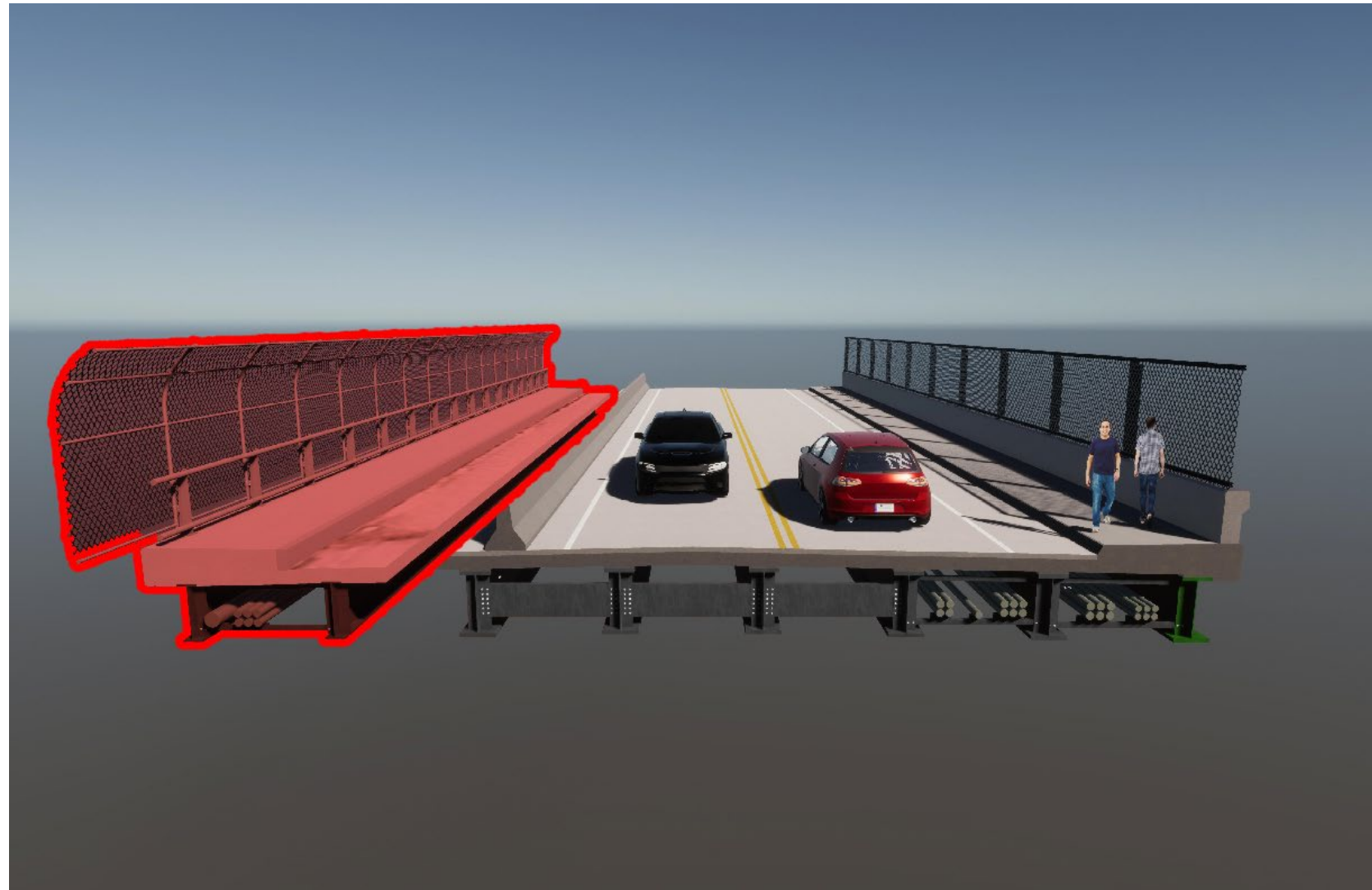


Demolition

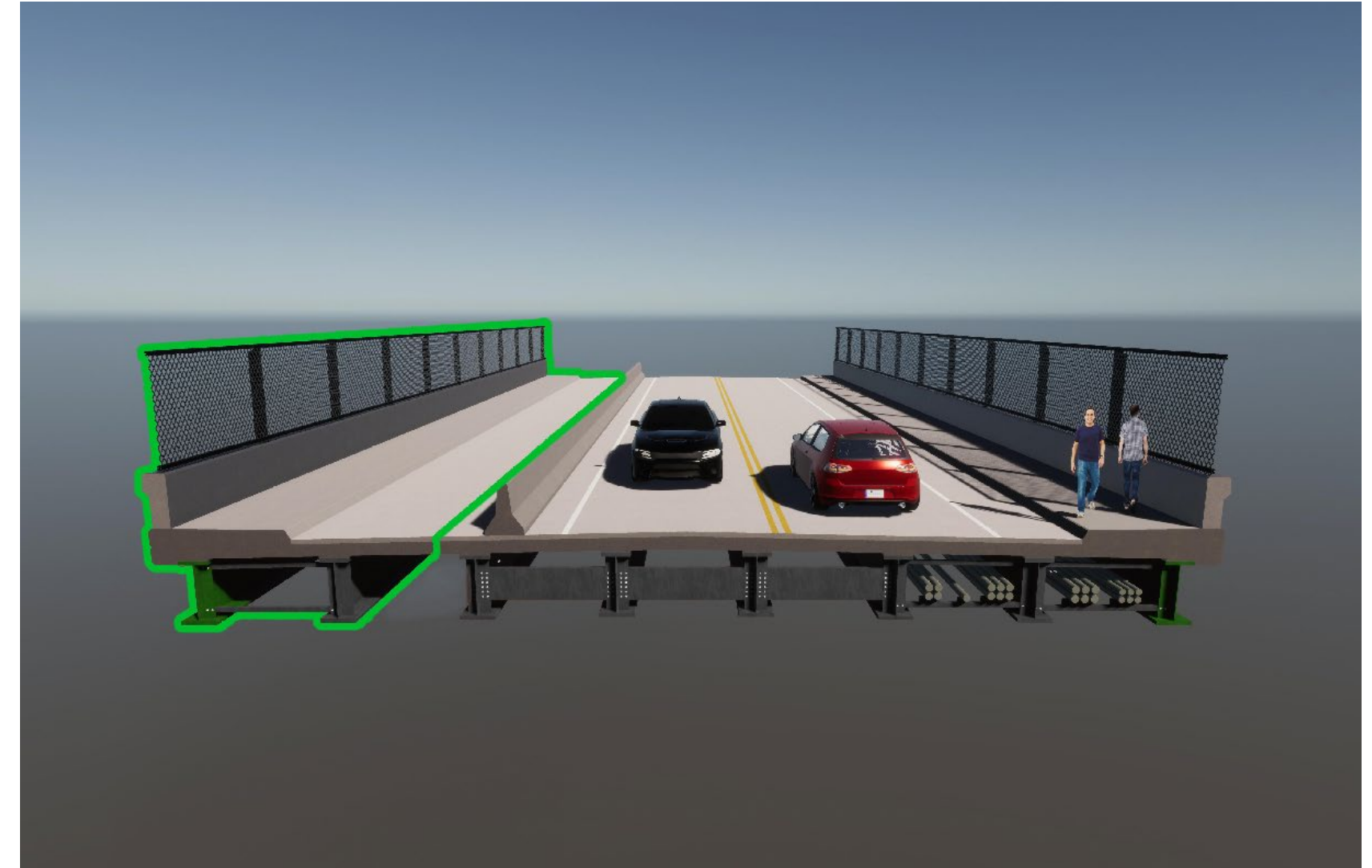


Construction

Gorham Street Bridge Roadway Cross Section: Phase 2



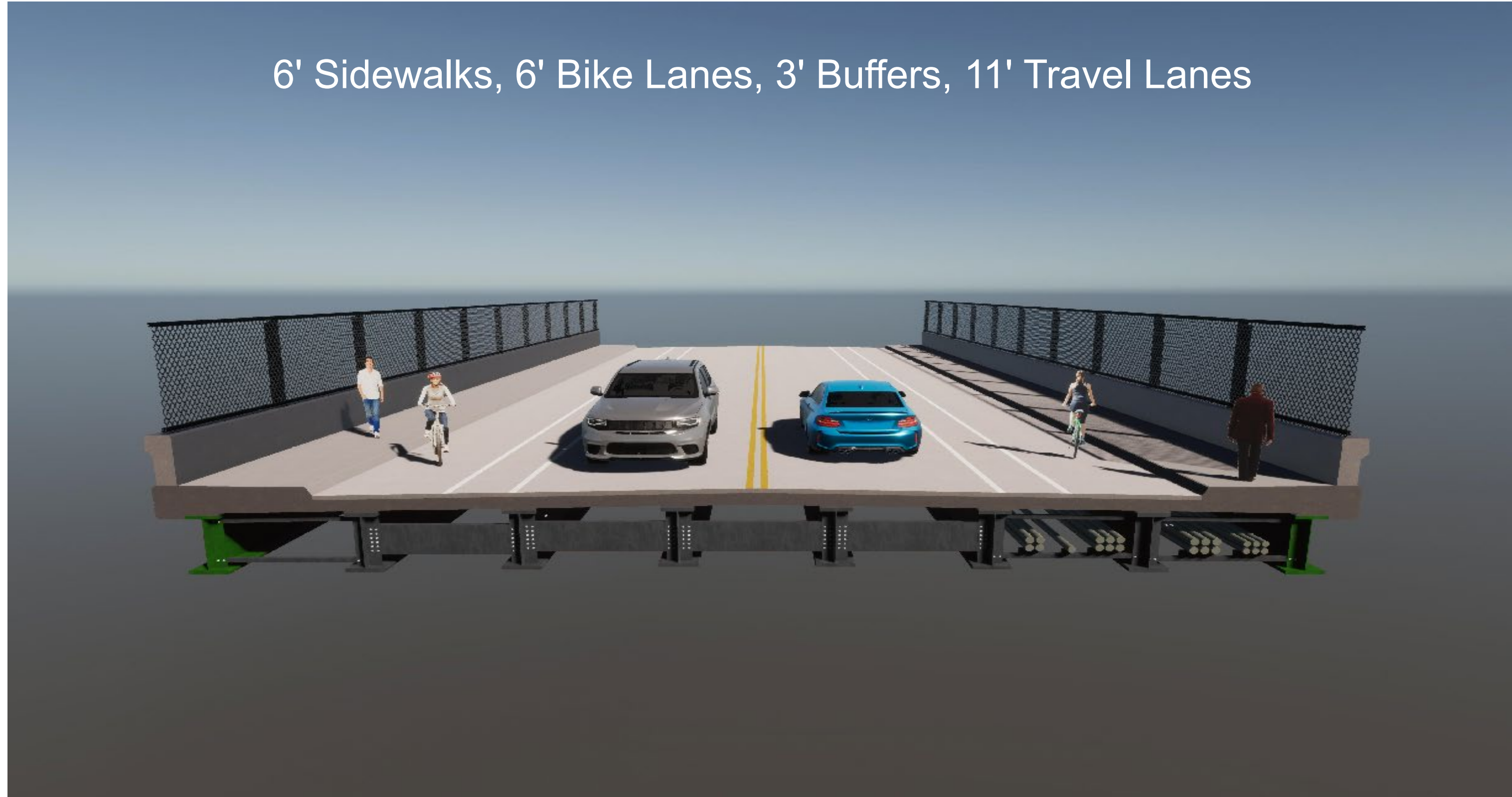
Demolition



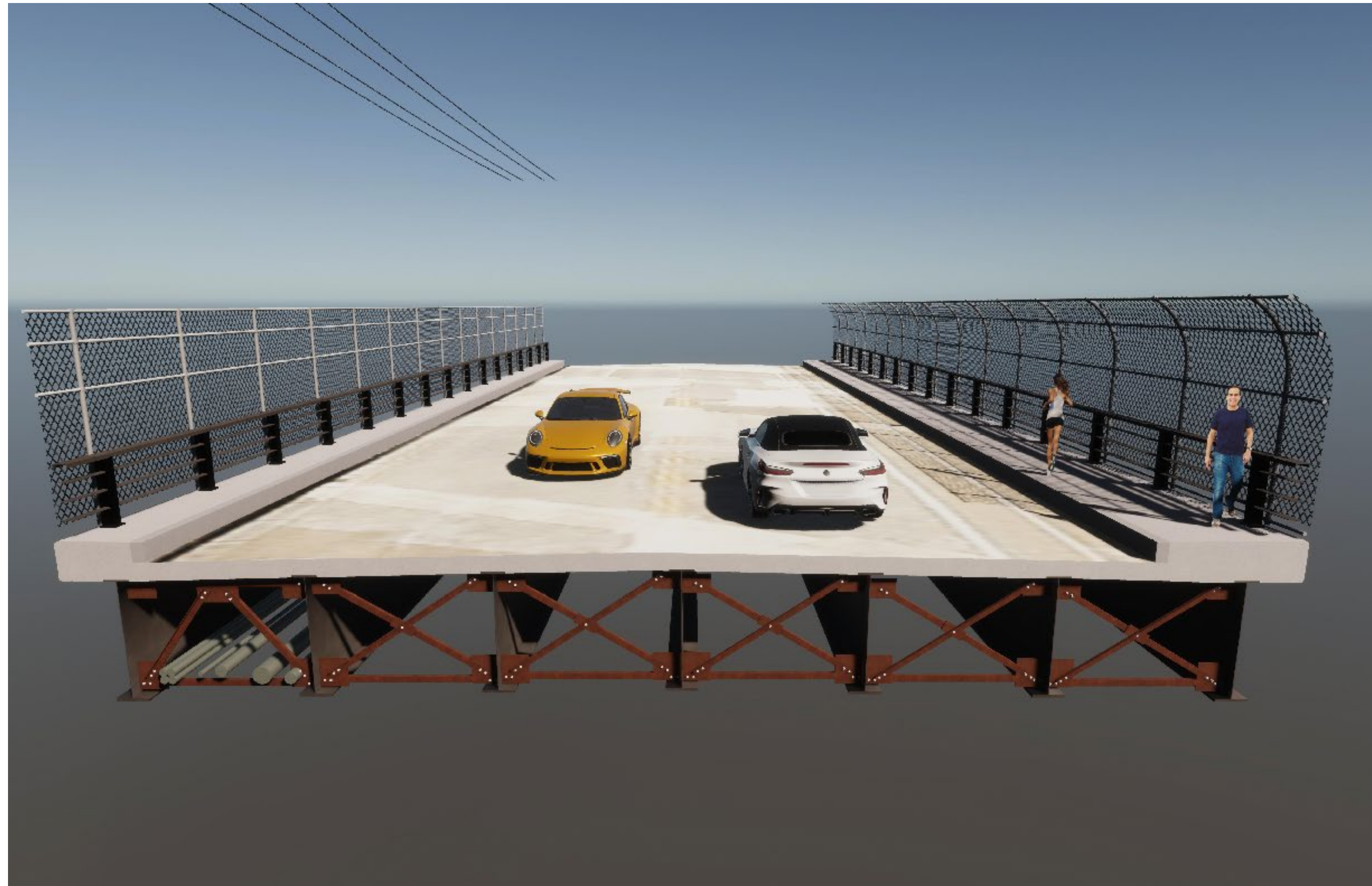
Construction

Gorham Street Bridge Cross Section: Final Configuration

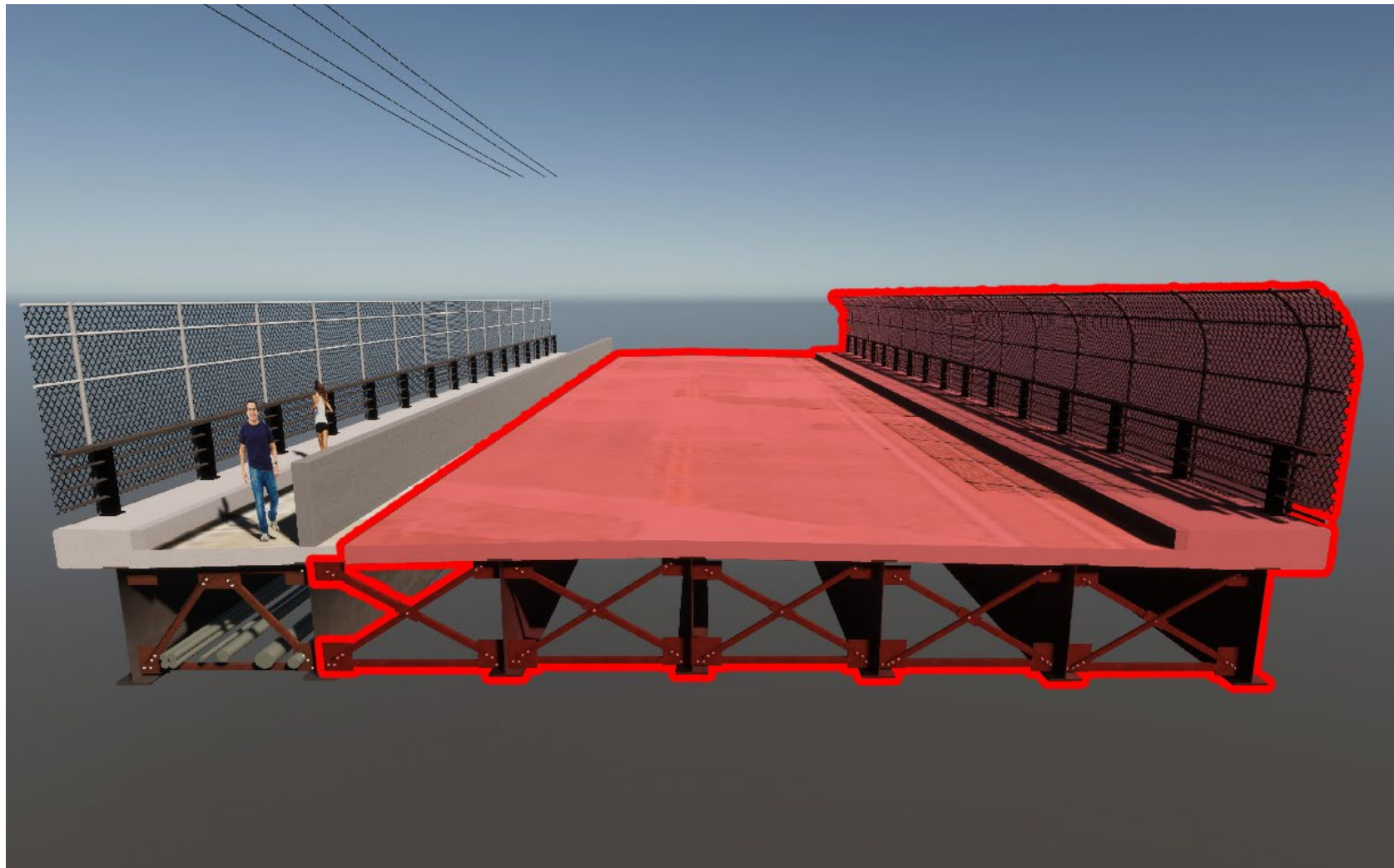
6' Sidewalks, 6' Bike Lanes, 3' Buffers, 11' Travel Lanes



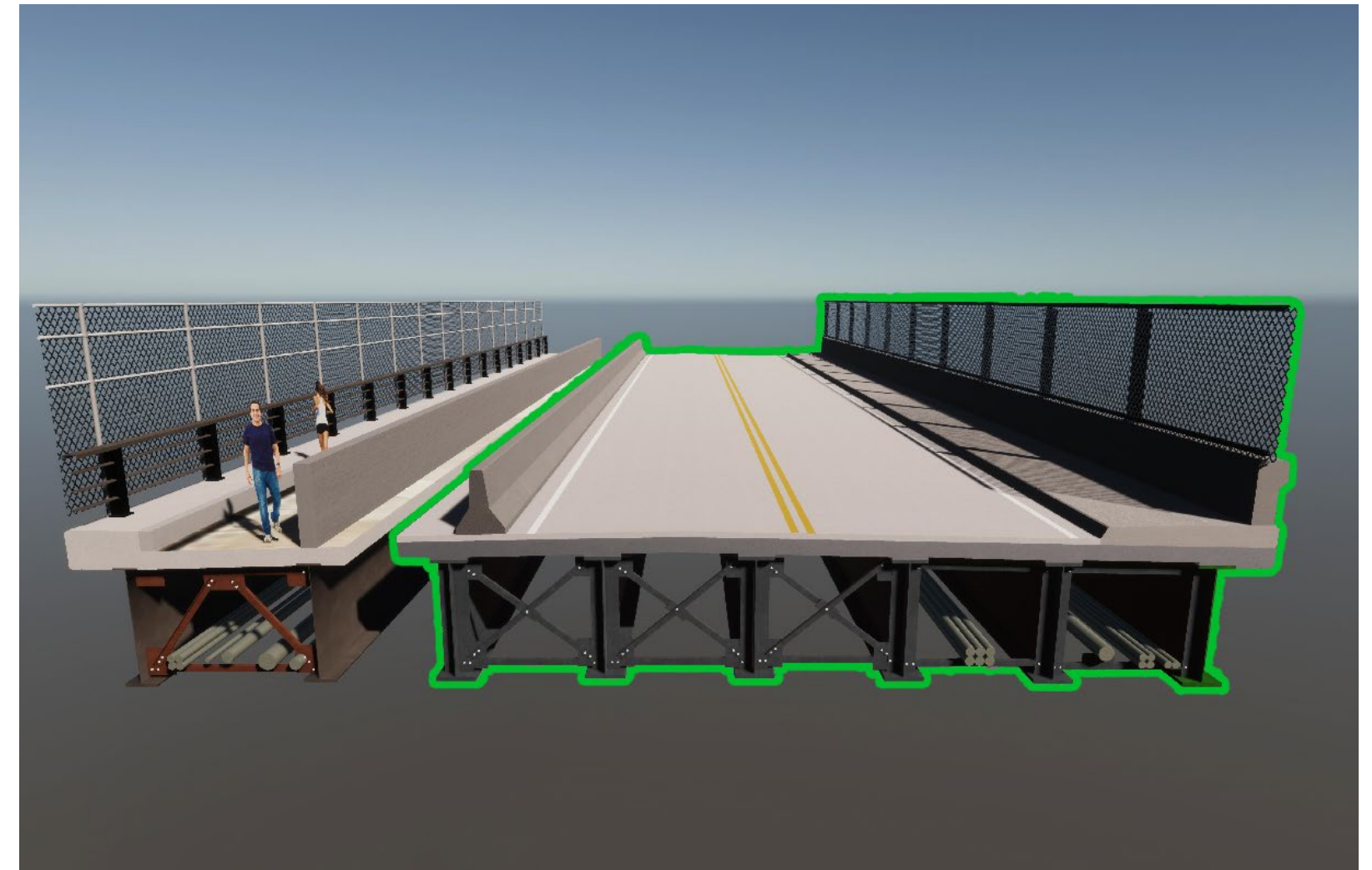
Westford Street Bridge Existing Configuration



Westford Street Bridge Roadway Cross Section: Phase 1

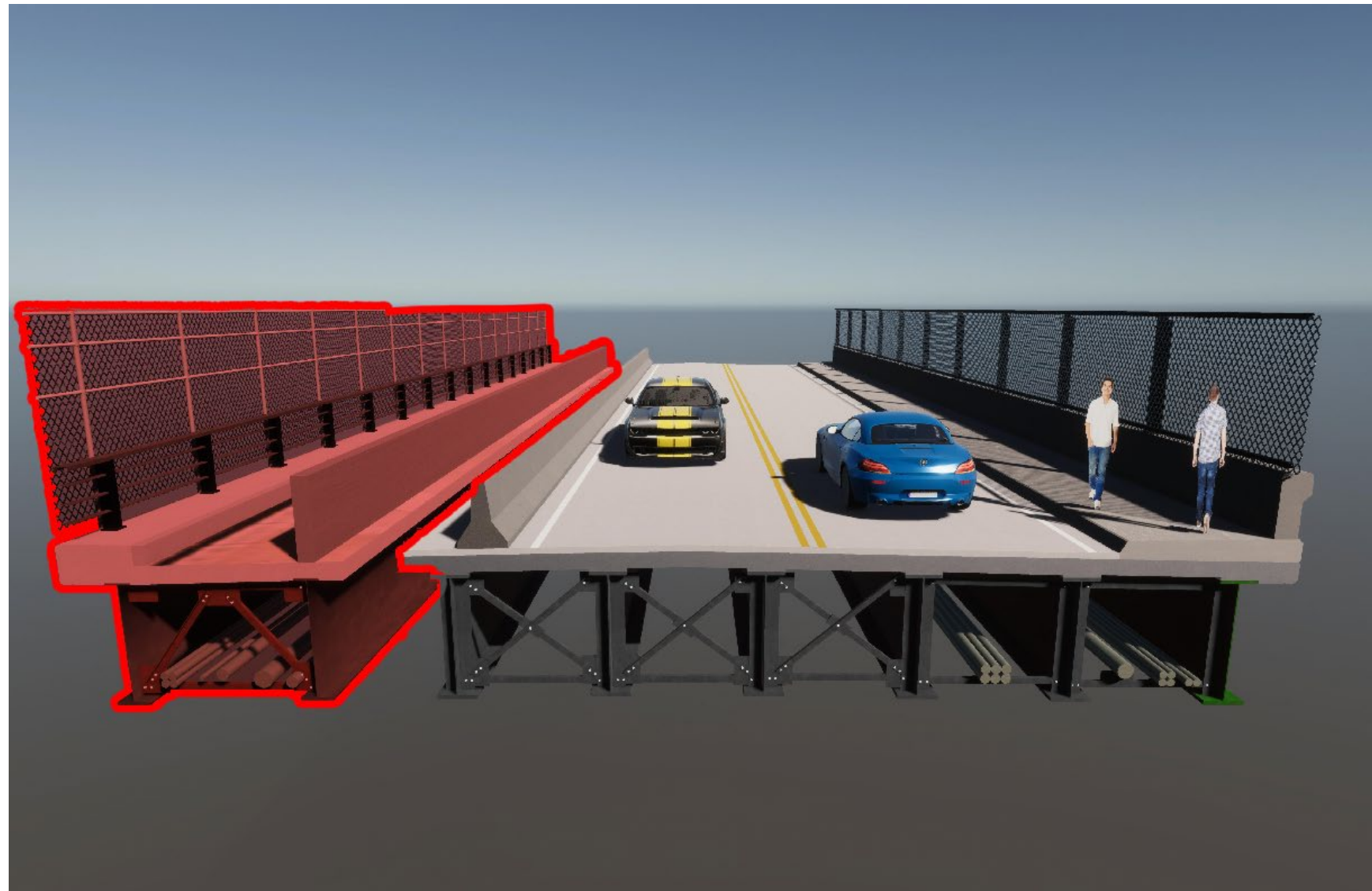


Demolition

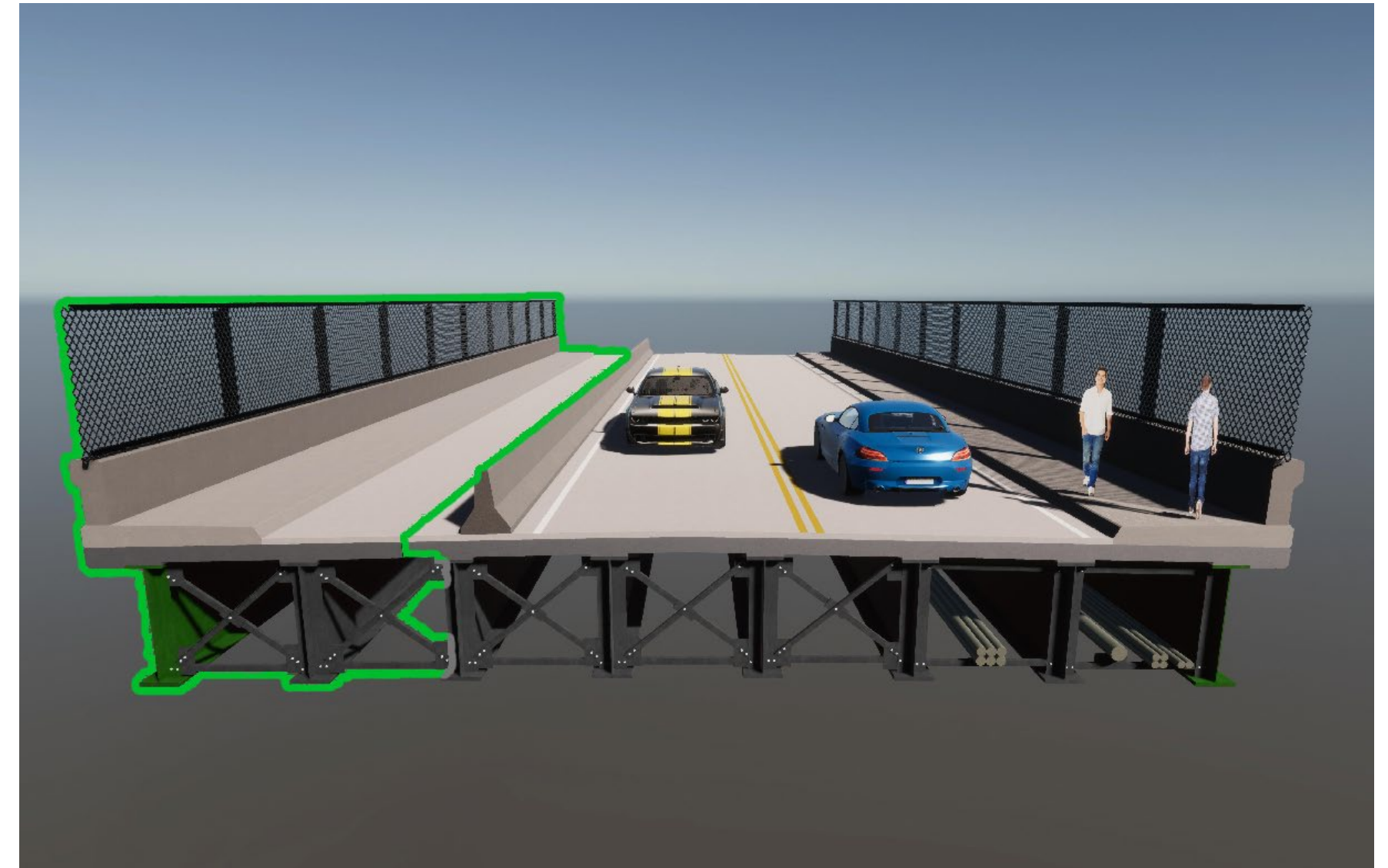


Construction

Westford Street Bridge Roadway Cross Section: Phase 2



Demolition



Construction

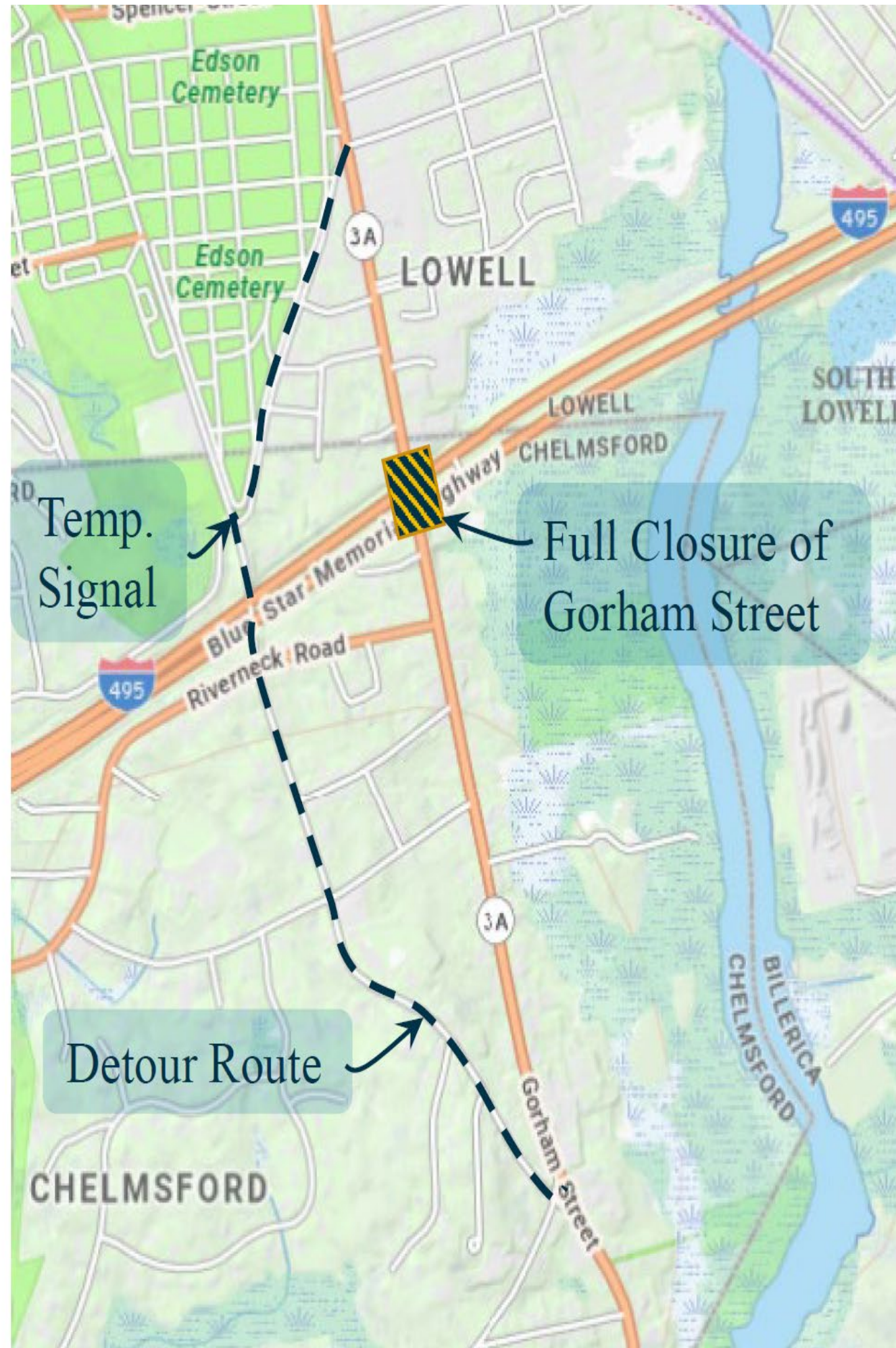
Westford Street Bridge Cross Section: Final Configuration

6' Sidewalks, 6' Shoulders, 11' Travel Lanes





Construction Impacts



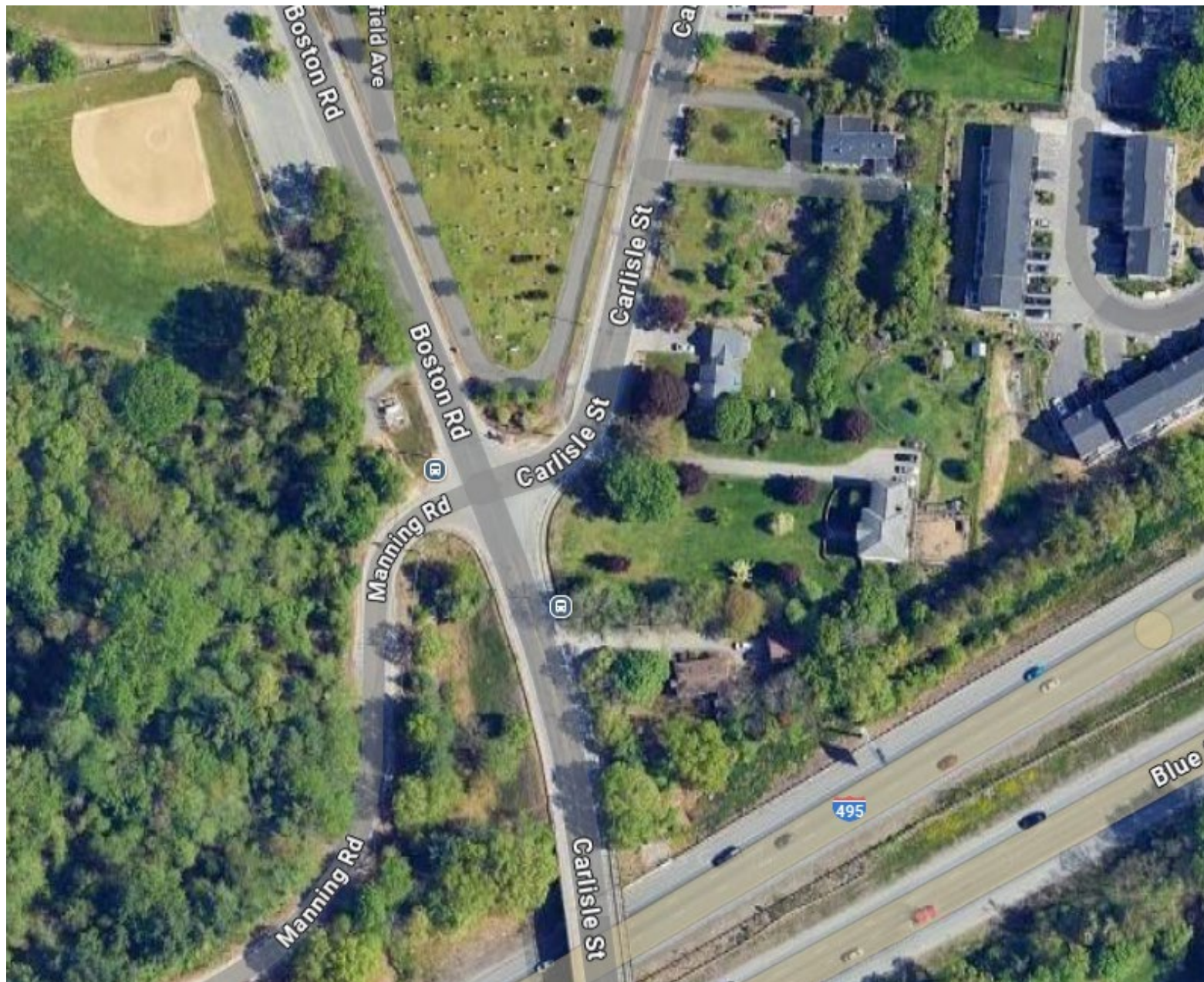
Gorham Street Full Detour

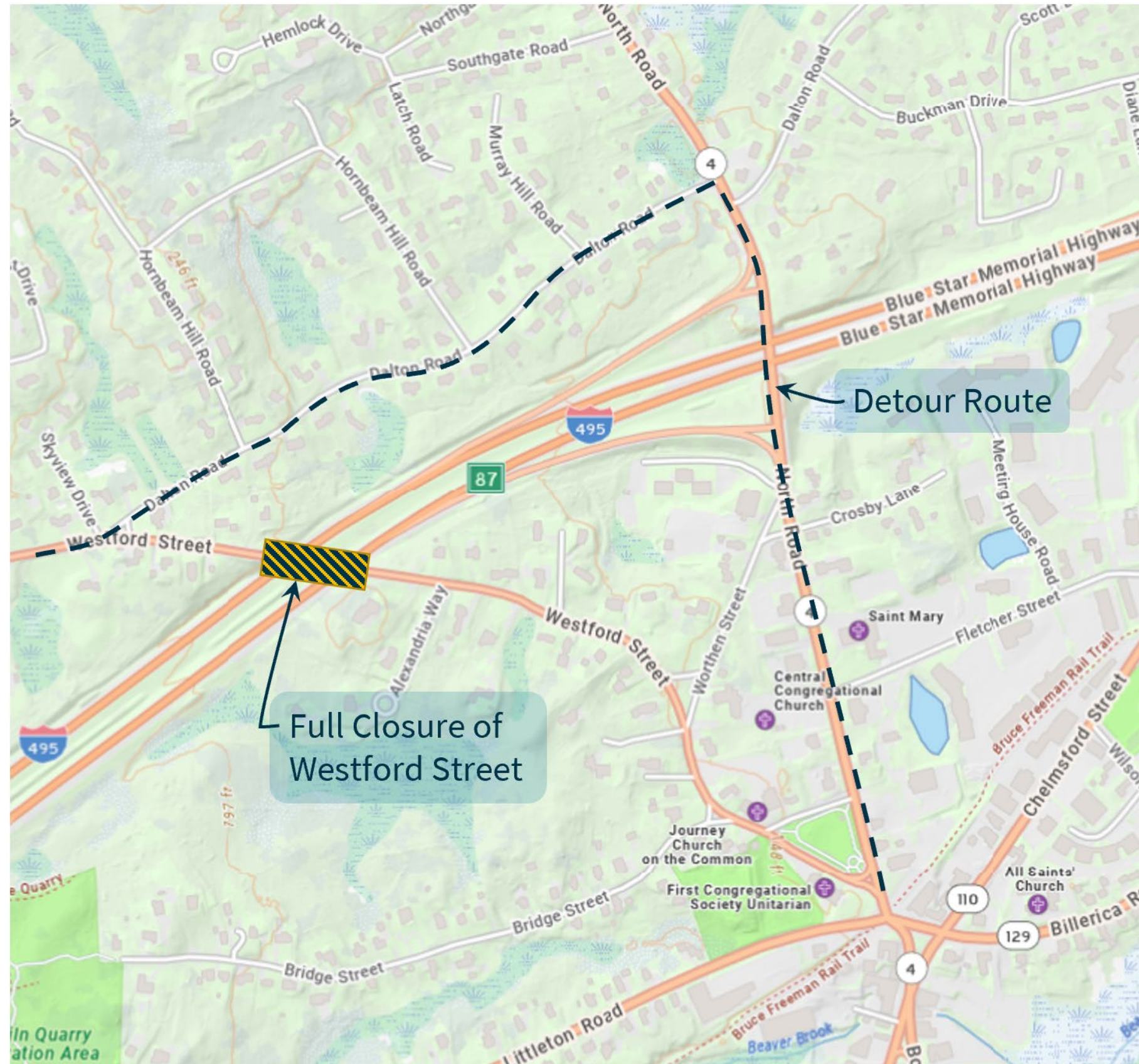
- Vehicles and bicycles will be detoured in both directions during Phase 1, onto Carlisle Street.
- Gorham Street will be reopened to vehicles and bicycles for Phase 2.
- Pedestrians will have access across Gorham Street Bridge throughout construction.



Gorham Street Detour: Temp. Signal

- A temporary signal will be installed at the intersection of Carlisle Street with Boston Road and Manning Road.
- Temporary signal will be removed after completion of Stage 1 Construction.
- The signal is intended to improve traffic flow.





Westford Street Full Detour

- Vehicles will be detoured in both directions during Phase 1, using Dalton Road and North Road.
- Westford Street will be reopened to vehicles for Phase 2.
- Bicycles and pedestrians will have access across Westford Street Bridge throughout construction.



Other Construction Impacts: Noise and Dust Impacts and Mitigation

Noise Reduction Methods:

- Scheduling truck loading, unloading and hauling operations to minimize impact
- Use of equipment with noise suppression devices
- Backup alarms on construction vehicles and equipment will be ambient- sensitive or manually adjustable
- A Noise Control Plan has been accepted by MassDOT.

Dust Reduction Methods:

- Monitoring of dust levels
- Environmental controls for monitoring dust, including:
 - Use of wet construction methods, such as water spray, to control dust
 - Reducing vehicle speed
- A Dust Control Plan has been accepted by MassDOT.

Early Construction Impacts and Work Scheduled

- Install temporary signal at the intersection of Boston Road and Carlisle Street to facilitate Gorham Street detour
- Create work zones on I-495 under each bridge
- Implement full detours on bridges after end of school year
- Demolition of bridge sections for phase 1

Work on I-495 will mostly consist of nightwork between the hours of 9 PM and 5 AM and will include:

- Lane closures
- Demolition Operations
- Steel Erection Operations



**How will we
keep you
informed?**

How to reach us?

- Project hotline - 978-441-2000
 - Hotline is answered Monday through Friday between the hours of 7:00am and 4:00 pm.
 - All calls received after hours will be returned the next business day.
- Submit email comments to:
ChelmsfordLowellBridges@dot.state.ma.us
- For project information and to sign up for email updates, visit the MassDOT Website at: www.mass.gov/chelmsford-lowell-bridge-bundle-replacement

Use the QR Code:





Questions and discussion

How to reach us?

- Project hotline - 978-441-2000
 - Hotline is answered Monday through Friday between the hours of 7:00am and 4:00pm
 - All calls received after hours will be returned the next business day.
- Submit email comments to:
ChelmsfordLowellBridges@dot.state.ma.us
- For project information and to sign up for email updates, visit the MassDOT Website at: www.mass.gov/chelmsford-lowell-bridge-bundle-replacement

Use the QR Code:





Thank You

*Chelmsford-Lowell Bridge Bundle
Replacement: Gorham St. &
Westford St. over I-495*

Public Information Meeting – 3/26/2025 – 6:00PM

Project File No. 612631

