



Reconstruction of the Blynman Canal Bridge-Gloucester

Virtual Public Information Meeting

2/23/2023

Project File No. 608397

Joseph Breen, PE, MassDOT Project Manager



Zoom Controls for Meeting



- Ask a question and share comments



- Drop down menu to check microphone and speakers



- Raise your hand - *9 for users dialing in and Alt + Y to raise your hand



- If you are unable to access the internet or are having technical problems, please call into the meeting at 1-301-715-8592, Webinar ID: 861 8443 9836



Live Transcript

- Closed captioning automatically generated by Zoom



If you have trouble with the meeting technology during the presentation, please call:

1-888-799-9666

Audio Settings ^



Raise Hand



Q&A



Live Transcript

Leave

Public Meeting Notes and Procedures

Notification of Recording

- This virtual public meeting will be recorded. The Massachusetts Department of Transportation may choose to retain and distribute the video, still images, audio, and/or transcript. All parts of this meeting are considered public record.
- By continuing attendance with this virtual public meeting, you consent to participate in a recorded event.
- If you are not comfortable being recorded, please turn off your camera, and keep your microphone muted, or you may choose to excuse yourself from the meeting.
- **Other Important Notes –**
 - Your microphone and webcam are automatically disabled upon entering this meeting.
 - The meeting will be open to questions and answers at the end of the formal presentation.
 - Please take time to respond to our survey! Your feedback is important.

Notice of MassDOT's policy on diversity and civil rights:

- All MassDOT activities, including public meetings, are free of discrimination.
- MassDOT complies with all federal and state civil rights requirements preventing discrimination based on sex, race, color, ancestry, national origin (limited English proficiency), religion, creed, gender, sexual orientation, gender identity or expression, or veteran's status.
- We welcome the diversity from across our entire service area. If you have any questions or concerns, please visit <https://www.mass.gov/nondiscrimination-in-transportation-program> to reach the Office of Diversity and Civil Rights.

Thank you for joining our meeting. We appreciate your participation!

Project Panel

- **Joseph Breen, PE**, MassDOT Project Manager
- **Michael O'Dowd, PE**, MassDOT Director of Major Projects
- **Brian Fallon, PE**, MassDOT District 4 Senior Project Designer
- **Keith Griesing, PE**, Principal, Hardesty and Hanover, LLC
- **Ed Malnati, PE**, Project Manager, Hardesty and Hanover, LLC
- **Daniel Tarantino, AIA, NCARB, LEED**, Architectural Lead, Hardesty and Hanover, LLC
- **Kim Treacy**, Community Engagement Specialist, City Point Partners, LLC

Meeting Outreach

Newspaper

Gloucester Daily times



MassDOT Social Media

facebook.com/massdotinfo/
twitter.com/MassDOT



Thanks to the following for sending notice of this meeting:

City of Gloucester

AMVETS

Council on Aging

Registry of Motor Vehicles

Senior Care Inc

Greater Cape Ann Chamber of Commerce



Agenda

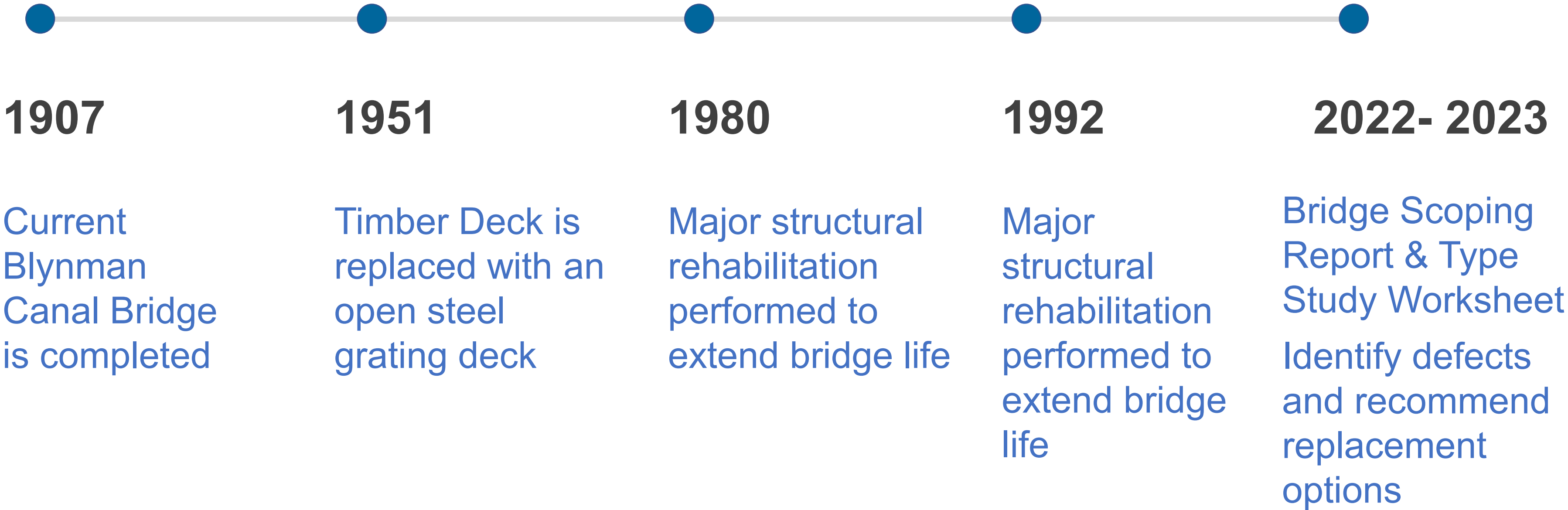
1. Background
2. Goals
3. Alternatives
4. Potential Impacts
5. Next Steps
6. Staying Involved





Project Background

Bridge History



Bridge History

- 1905 – 1907 Current bridge designed by The Schertzer Rolling Lift Bridge Company & built by The Boston Bridge Works, Inc.
- 1909, 1921, 1927, 1930, and 1946 timber deck planking replaced
- 1951 Timber deck planks replaced with open steel grid deck
- 1980 Major rehabilitation to replace steel grid deck, replace and repair steel supporting members, and upgrade operating machinery

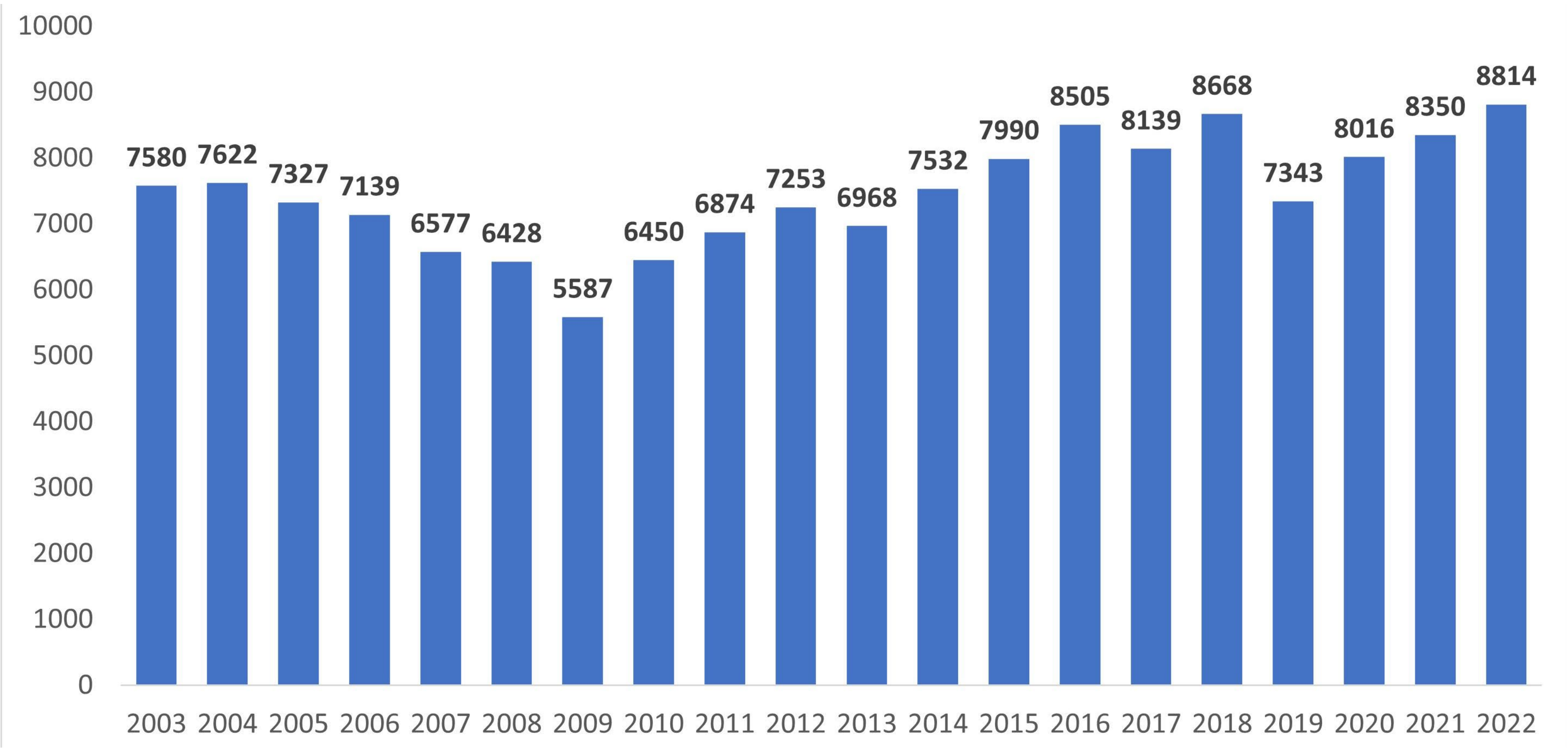


Bridge History Continued

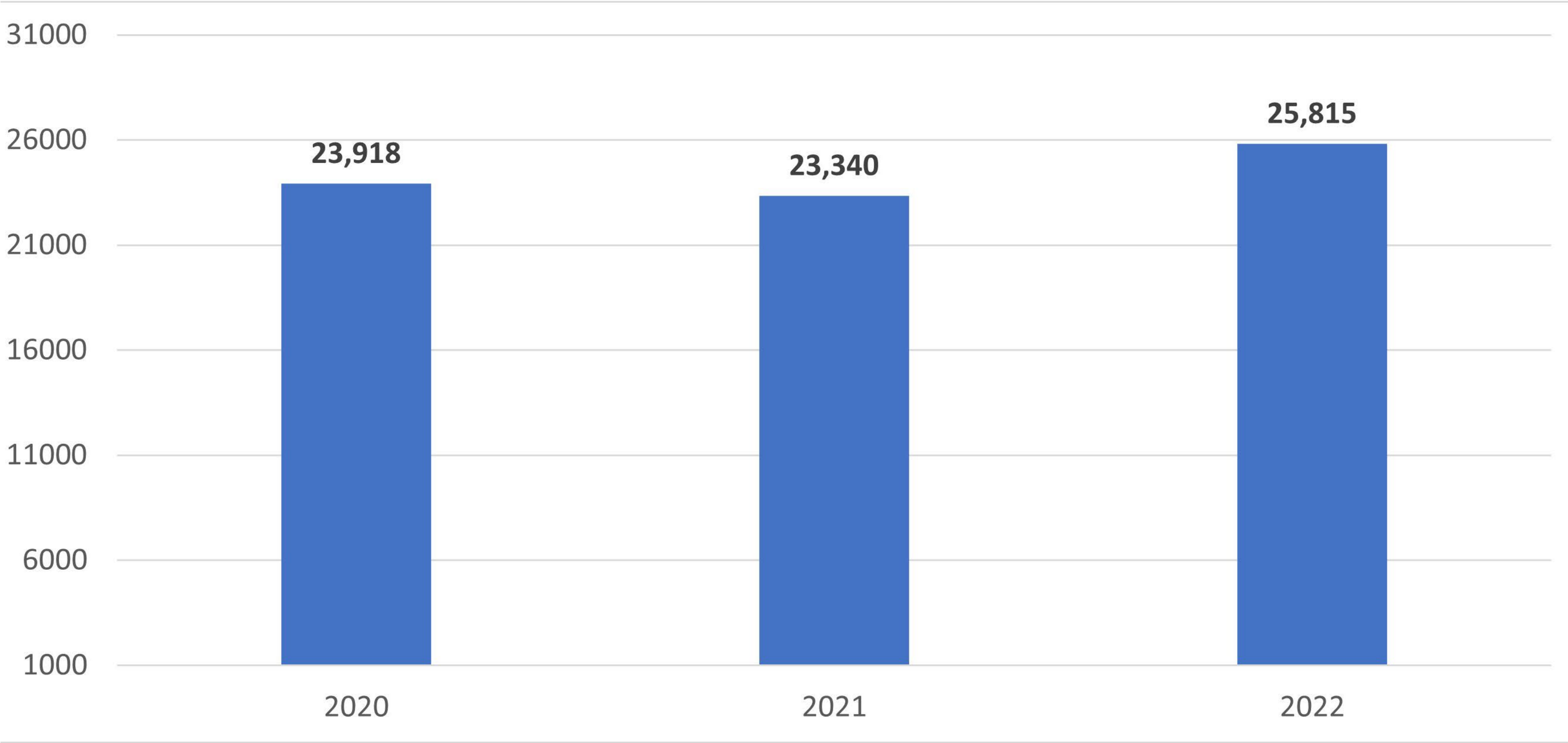
- 1992 Major rehabilitation to repair segmental girders, replace track girders and rack supports, repair abutment concrete and timber fender repairs
- 2002 Segmental girder tread plate replacement
- 2014, 2020 Rehabilitation to replace and repair steel support members
- 2023 Proposed maintenance repairs of steel support members



Bridge Openings (2003 – 2022)



Vessels Passing Through (2020 – 2022)

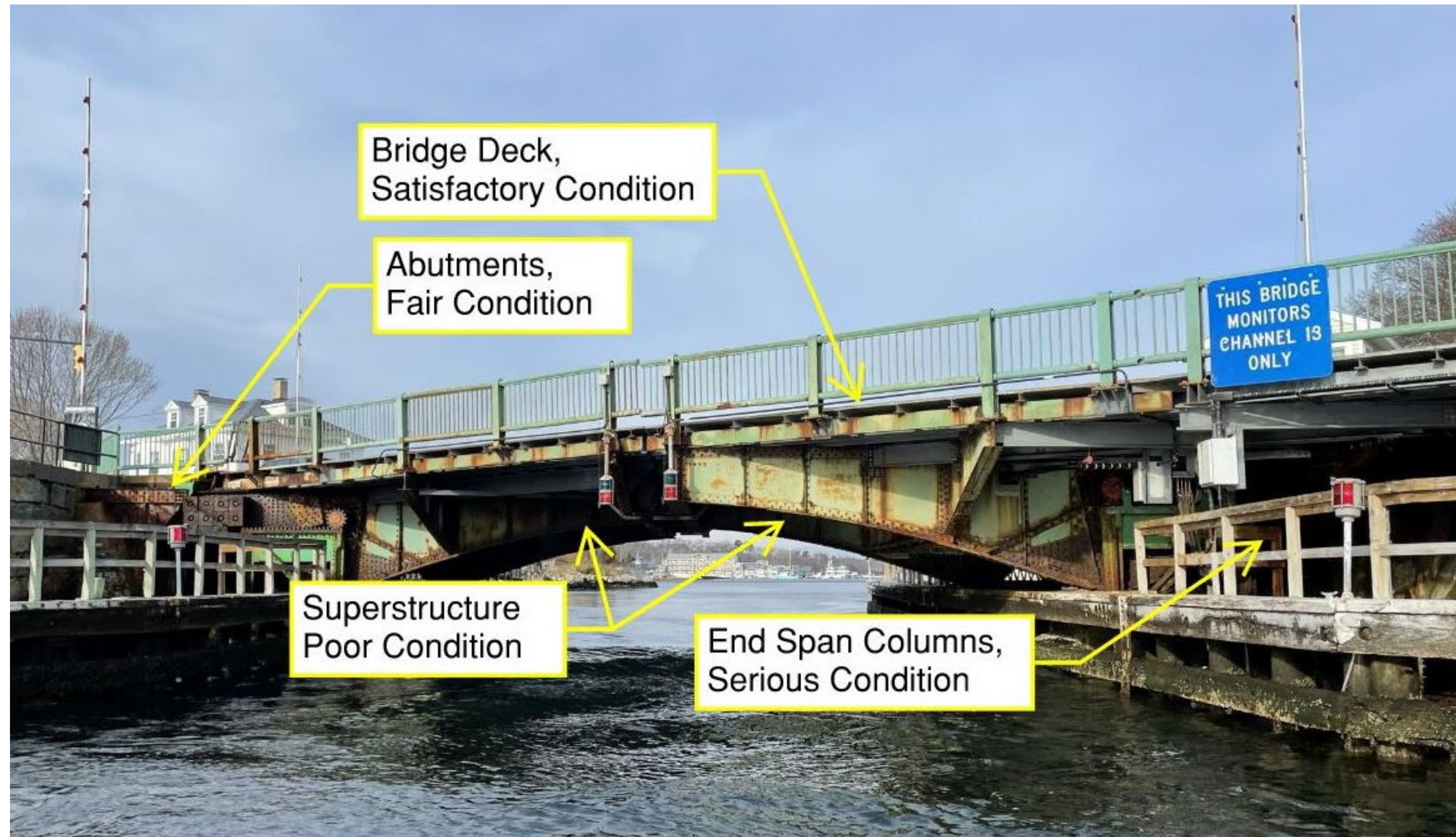


Existing Conditions

- Bridge is inspected by MassDOT personnel or consultants every two years
- Given age and design of bridge, some aspects are inspected annually under “Fracture Critical” designation
- Bridge operation is always controlled and observed by an on-site operator



Current Inspection Condition Ratings



Recent Sidewalk Repair



Bascule Girder & Floorbeam Deterioration



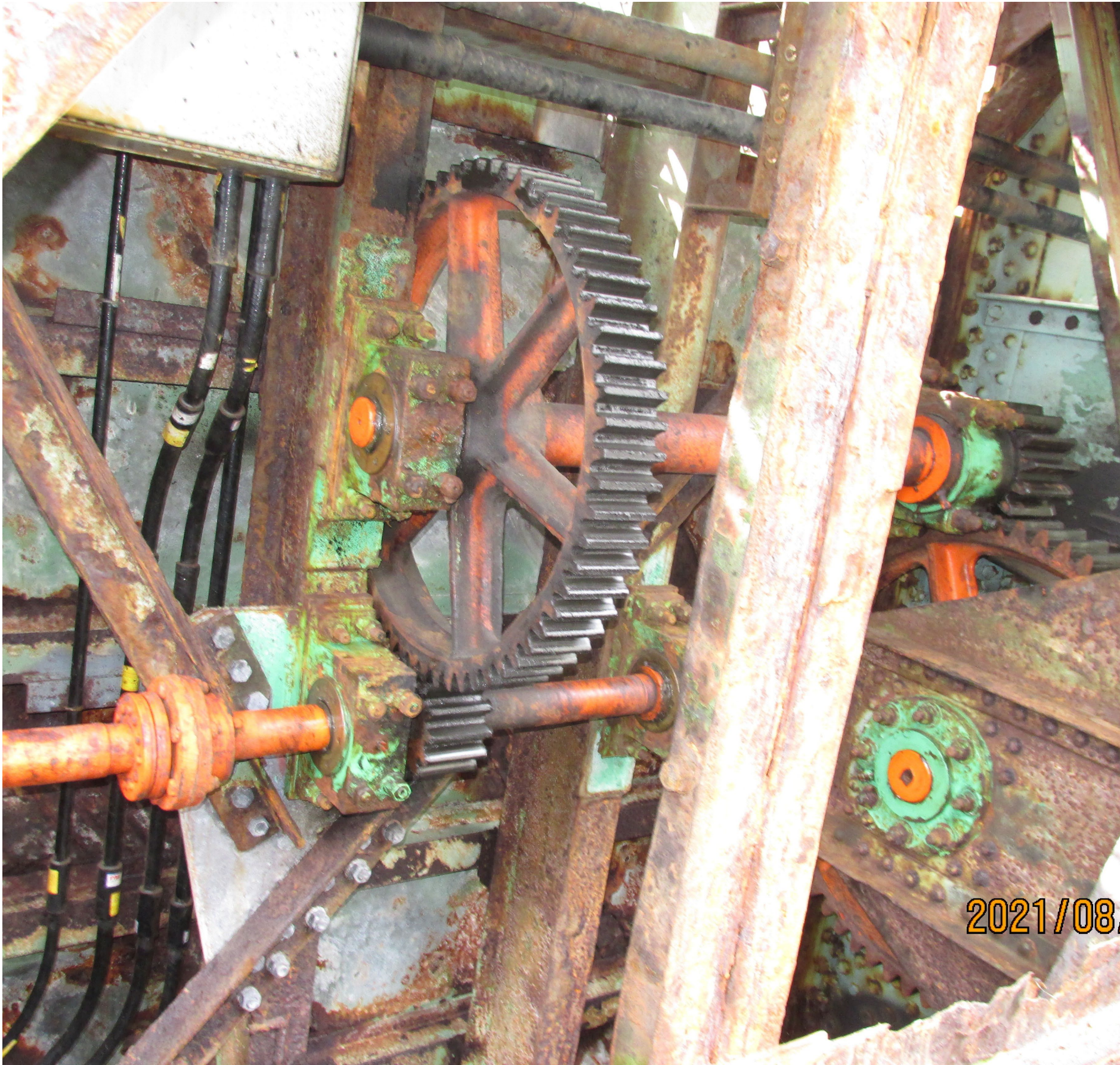
Interior Column Support Deterioration



Abutment Wall Deterioration



Operating Machinery Condition





Project Goals

Stakeholder Coordination

- Navigation channel users
 - Commercial fishing
 - Recreational boating
 - Maritime construction / maintenance
- Bridge users
 - Vehicular
 - Pedestrians and bicyclists
- Emergency services and local government
- U.S. Coast Guard and U.S. Army Corps of Engineers
- MassDOT



Project Goals and User Benefits

- Investigate accelerated bridge construction techniques
 - Minimize impacts to adjacent private properties
 - Minimize impacts to land and water traffic during construction
 - Reduce impacts to adjacent public and parkland properties
- Maintain bridge open and close cycle duration

Design Objectives

- Match approach roadway width
- Maintain existing bridge sidewalk width on each side
- Maintain existing horizontal channel clearance of 39 feet
- New foundations in line with canal walls
- Achieve vertical bridge clearance over mean high-water (MHW) clearance
- Protect bridge operating equipment above design flood level
- Explore potential on-street bicycle lanes

Project Scope

- Replace existing bridge with new moveable span
- Investigate installing a temporary bypass bridge for both vehicles and pedestrians



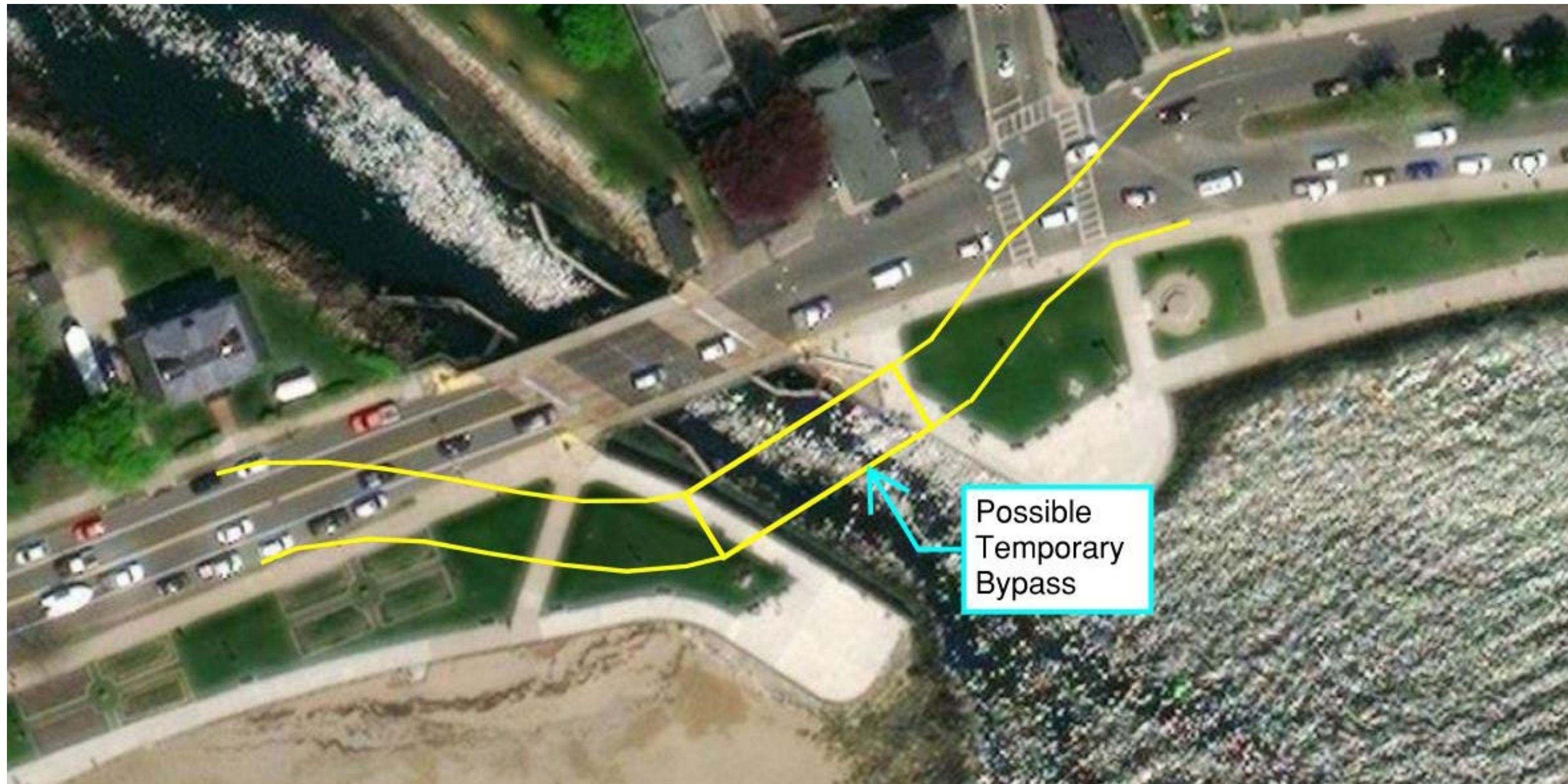
Potential Detour

Without temporary bypass bridge



Potential Detour

Temporary bypass bridge





Project Alternatives

Rolling Lift Bascule

Street Level View



Aerial View With Span Open



Trunnion Bascule

Street Level View



Aerial View With Span Open





Potential Environmental, Cultural Resource, and Community Impacts

Project Impacts

- Short term full roadway closures and detours may be necessary during portions of project
- Temporary bypass roadway may be located on adjacent park land
- Navigation channel may be maintained throughout project
- Short-term navigation closures may be required and coordinated with USCG



Pedestrians and Bicyclists

- Exploring options to provide pedestrian and bicyclist travel across canal during construction
- New bridge will be designed with accommodations and improvements for pedestrian and bicyclist safety





Other User Impacts

Moveable Bridge Replacement Challenges

- Maintain existing Western Avenue vehicular, pedestrian traffic and mariner travel through the canal during construction
- Construction staging
 - Maintain access to adjacent businesses
 - Balance channel closures and roadway closures
- Existing site constraints
 - Roadway and driveway entrances
 - Adjacent park land





Next Steps

Project Schedule



Early Public
Engagement

February 2023



Public Agency
Coordination
Initial
Investigations
Navigation Study &
Report

Winter -
Summer 2023



Preliminary Design
Development
Preliminary
Roadway and
Detour Analysis

Spring - Fall 2023



Pre-25% Design
Level Submission
and Approval

Early 2024



Development of
Public Design

2024 - 2027

How to reach us?

- For project information visit the MassDOT Design Public Hearing web site at: www.mass.gov/massdot-highway-design-public-hearings or use the QR Code
- Submit written comments to:
Carrie Lavallee, P.E., Chief Engineer
MassDOT
10 Park Plaza
Boston, MA 02116
Attention: Major Projects, PROJECT FILE NO. 608397
- Submit email comments to:
Dot.feedback.highway@state.ma.us





**Questions and
answers**

Questions and Answers



- “Raise your hand” to be unmuted for verbal questions (Alt + Y if using a phone)



- Submit your questions and comments using the Q&A button



- Please state your name before your question



- Please share only 1 question or comment at a time, limited to 2 minutes, to allow others to participate



- To ask a question via phone, dial *9 and the moderator will call out the last 4-digits of your phone number and unmute your audio when it is your turn



- Please take a few minutes to complete the survey after the meeting to let us know how your experience was with this virtual meeting

All questions and comments are subject to disclosure for public records. Please use these functions for project related business only.

Project Panel

- **Joseph Breen, PE**, MassDOT Project Manager
- **Michael O'Dowd, PE**, MassDOT Director of Major Projects
- **Brian Fallon, PE**, MassDOT District 4 Senior Project Designer
- **Keith Griesing, PE**, Principal, Hardesty and Hanover, LLC
- **Ed Malnati, PE**, Project Manager, Hardesty and Hanover, LLC
- **Daniel Tarantino, AIA, NCARB, LEED**, Architectural Lead, Hardesty and Hanover, LLC
- **Kim Treacy**, Community Engagement Specialist, City Point Partners, LLC



Reconstruction of the Blynman Canal Bridge-Gloucester

2/23/2023

Joseph Breen, PE, MassDOT Project Manager