



PFC Ralph T. Basiliere Bridge Replacement

Public Information Meeting

Haverhill | March 5, 2026 | 6:00 PM

Project File No. 605304



Notice of MassDOT's policy on diversity and civil rights:

- All MassDOT activities, including public meetings, are free of discrimination.
- MassDOT complies with all federal and state civil rights requirements preventing discrimination based on sex, race, color, ancestry, national origin (limited English proficiency), religion, creed, gender, sexual orientation, gender identity or expression, or veteran's status.
- We welcome the diversity from across our entire service area. If you have any questions or concerns, please visit: [//www.mass.gov/nondiscrimination-in-transportation-program](https://www.mass.gov/nondiscrimination-in-transportation-program) to reach the Office of Diversity and Civil Rights.

Thank you for joining our meeting. We appreciate your participation!

How to Participate

- View the 30-minute presentation
- Ask questions to project team during question-and-answer period
- Representatives of the media can direct media inquiries to Jacquelyn.Goddard@dot.state.ma.us

Public Information Meeting - Advertisement

- MassDOT email bursts
- Newsprint:
 - *Eagle Tribune*
 - *Haverhill Gazette*
- Public Access Cable TV
 - Haverhill
 - Each bordering Massachusetts community
 - Atkinson and Plaistow, N.H.
- News websites
 - Rumbo! (Spanish)
- WHAV FM



PFC Ralph T. Basiliere Bridge Replacement

What is happening?

MassDOT will host a live, in-person public information meeting to provide community members with an opportunity to become fully acquainted with the construction phase of the replacement of the Private First Class Ralph T. Basiliere Bridge which carries State Route 125, locally Bridge Street over the Merrimac River and the Bradford Rail Trail between downtown Haverhill and the Bradford neighborhood. At the meeting, MassDOT will present construction timing and phasing, measures to help the project be a good neighbor, and developments to the bridge's appearance that have come through the design-build process. The bridge's overall look continues to reflect what was developed through a robust public process with the Haverhill community including arches, a central overlook with lighted beacons, and the reuse of the existing bridge's tower roofs in the Bradford Rail Trail Park, however, the main structural material will be steel, instead of concrete, providing greater constructability and more open sight lines.

How will this affect you?

The proposed project includes the full replacement of the Basiliere Bridge. Staged construction will be used to generally maintain one travel lane going towards Bradford and one lane going towards downtown Haverhill as well as one sidewalk. Night and weekend closures of the bridge with detours may be needed at times to ensure public safety. MassDOT encourages all interested members of the community to attend and learn more about this project.

When

THURSDAY, MARCH 5, 2026
6:00PM

Where

PINNACLE AT HARBOR PLACE
2 MERRIMACK STREET, 3rd FLOOR
HAVERHILL MA 01830



To ensure its meetings are accessible, MassDOT reasonably provides: translation, interpretation, modifications, accommodations, alternative formats, and auxiliary aids and services. To request such services, please contact MassDOT's Chief Diversity and Civil Rights Officer at 857-368-8580 or MassDOT.CivilRights@dot.state.ma.us. For adequate time to process such request, please make them as early as possible, ideally 10-15 days prior to the event.

Project inquiries may also be emailed to massdotmajorprojects@dot.state.ma.us. Please submit any written statements regarding the proposed undertaking to: Carrie A. Lavalley, P.E., Chief Engineer, MassDOT, 10 Park Plaza, Boston, MA 02116, Attention: BRIDGE SECTION PROJECT FILE NO. 605304

Public Information Meeting – Flyer Drops and Staffed Tables

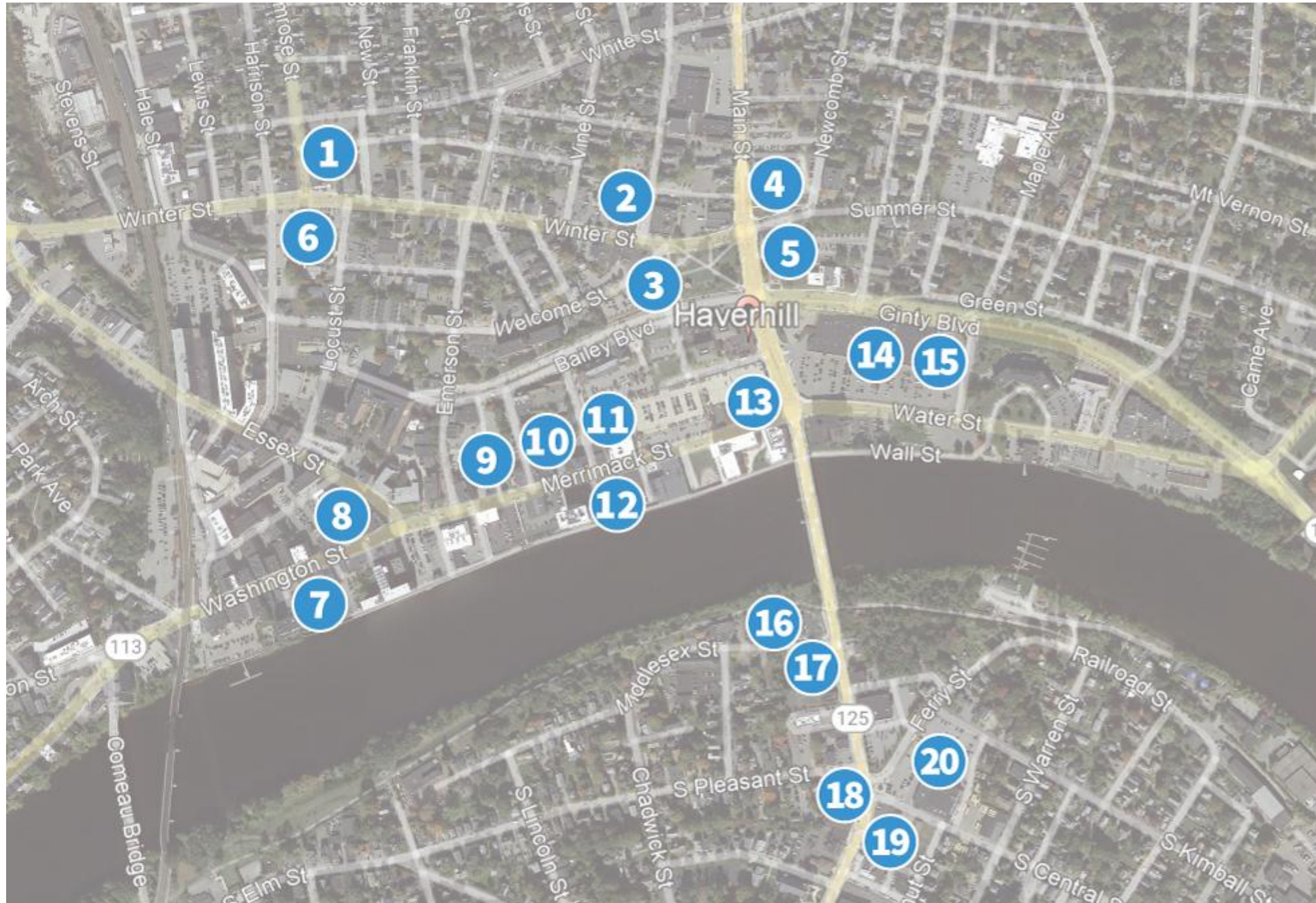
Staffed Tables:

- Haverhill Public Library
- Water Street Market Basket

Flyer Drops at 20 locations in downtown and Bradford



Flyer Drop Locations



1. Saint James Parish
2. Haverhill YMCA
3. Haverhill Citizen Center
4. Haverhill City Hall
5. Haverhill Public Library
6. Vinfen Clubhouse – Haverhill
7. MVRTA Washington Square
8. Battle Grounds Coffee Co.
9. Haverhill Beef
10. TD Bank
11. La Pizza di Forno
12. Salvation Army Thrift Store
13. Pentucket Bank
14. Market Basket
15. O’Reilly Auto Parts
16. Dunkin Donuts
17. Wendy's
18. A Sweet Affair
19. Nouria Shell Station
20. The Fix 2 (barbershop)

Thank You To Those Who Shared Our Flyers

State and Municipal:

- State Delegation for Haverhill
- Office of Mayor Melinda E. Barrett
- Haverhill City Council
- Council on Aging
- Disability Commission
- Planning & Economic Development via “News You Can Use”

Local community organizations, medical providers, schools, and social service providers

Agenda

1. Welcome & Introductions
2. What do we want to accomplish?
3. New bridge renderings
4. How will the traveling public be impacted?
5. Questions & Discussion



Meeting Speakers

- **MassDOT**
 - Cooper Martens
 - Dan Fielding
 - Joseph Stasio
 - Michael Winnick
 - Theodore Boyle
- **Design/Build Team – Middlesex-TranSystems**
 - Ali Tali
 - Brent Mawdsley
 - John Waugh
- **Construction Phase Outreach – WSP**
 - Nathaniel Curtis

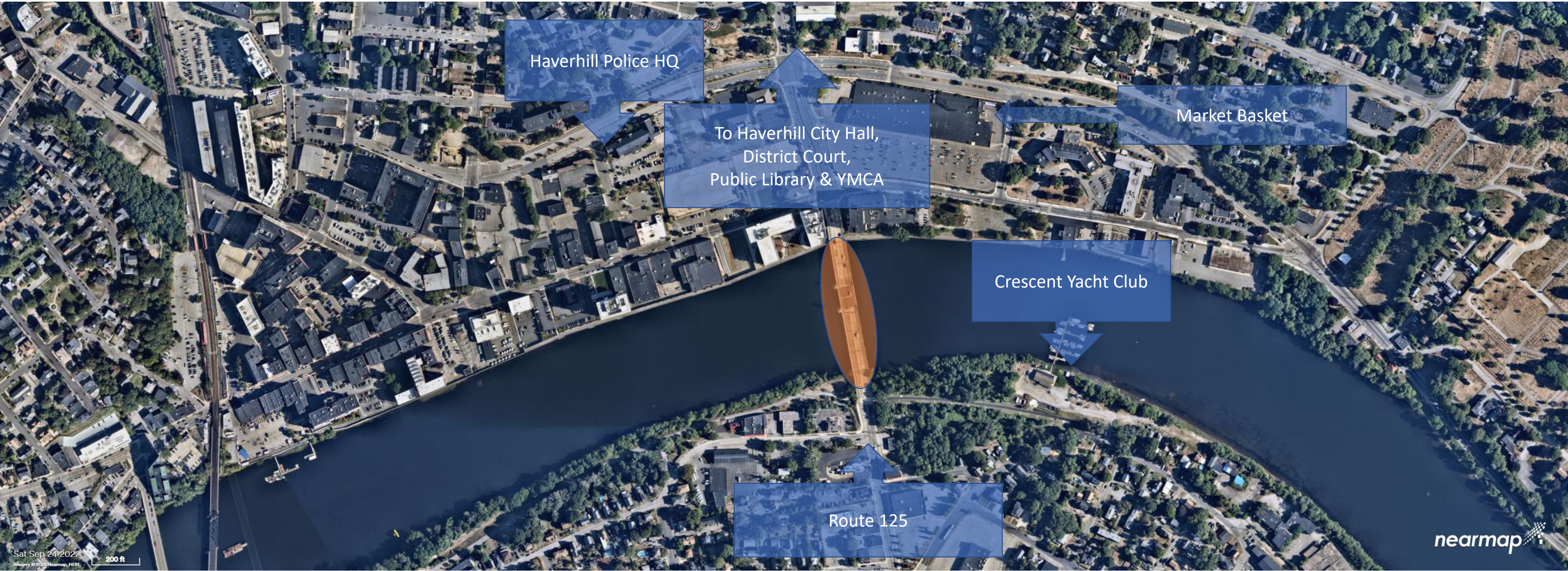
Language Interpretation Speakers

- **Haitian**
 - Nixon Cadet
- **Portuguese**
 - Arthur Pereira
- **Spanish**
 - Marwel Mercado



**What do we
want to
accomplish**

A Haverhill Landmark & Connector Since 1925



How Did We Get Here



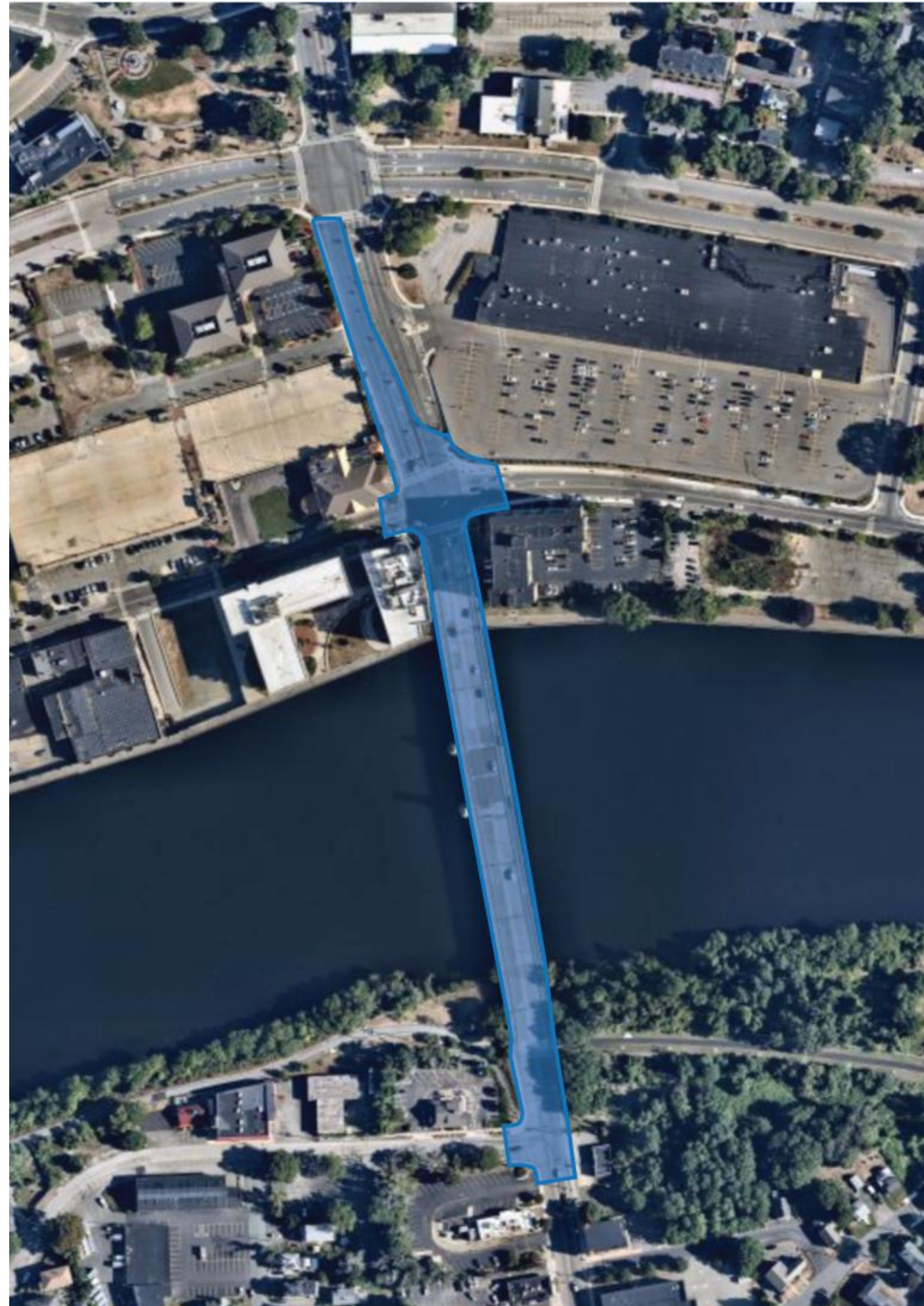
Project Goals

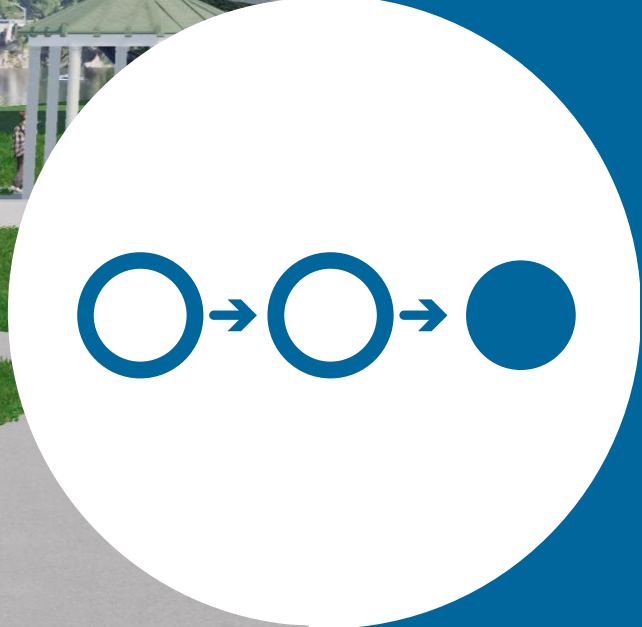
- Complete replacement of the existing Basiliere Bridge
 - Two defined lanes in each direction
 - Shared use sidewalks on both sides of the bridge
- Adaptive reuse of the existing tower roofs in the Bradford Rail Trail Park
- Landscape improvements to the Bradford Rail Trail Park
- Bridge aesthetic lighting
- Interpretive historical plaques



Limits of Work

- In the north:
 - The Main Street/Water Street/Merrimack Street intersection
 - A portion of Main Street as far north as Bailey Boulevard
- In the south:
 - Just past the S. Main Street/Middlesex Street intersection
- Includes short stretches of intersection approaches





New bridge renderings

What's Different?

- **Different:** steel bridge structure, not precast concrete:
 - Schedule improvement
 - Easier traffic management
 - Reduced need for heavy crane lifts
 - Reduced need for temporary shoring
 - Reduced risk from precast tolerance and production issues
 - Reduced environmental risk
 - Slenderer structure
 - Improved views

What's the Same?

Same:

- Number and style of arches
- Cross-section for cyclists, pedestrians and vehicles
- Center overlooks with seating and lighted beacons
- Reuse of tower roofs in the Rail Trail Park for gazebos
- Bridge lighting
- Historical plaques



View from the Water



View from Harbor Place



View from the Bradford Rail Trail Park



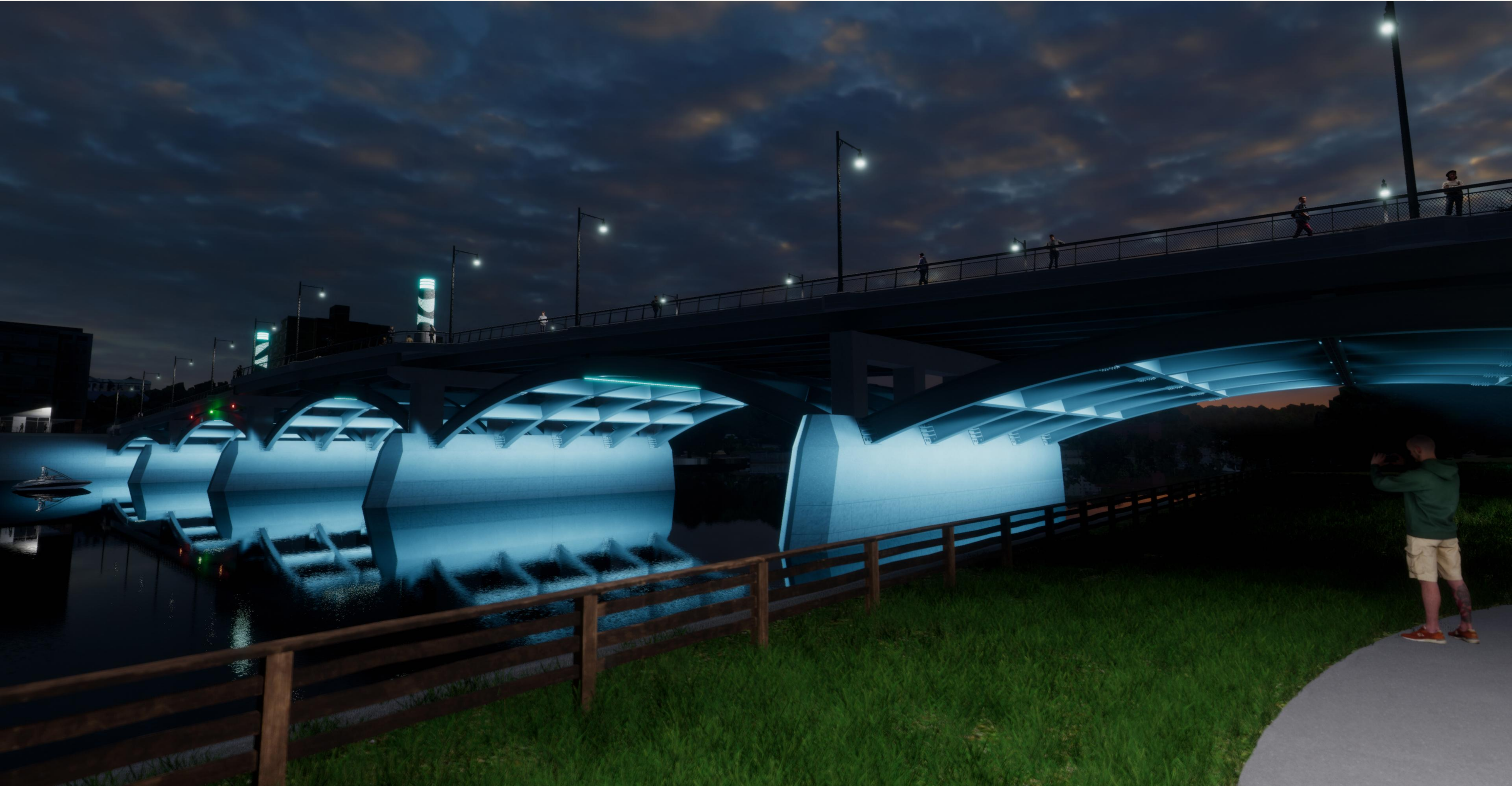
View from the Dempsey Boardwalk



View from the Merrimack at Night



Central Overlooks at Night



View from the Rail Trail Park at Night



How will the traveling public be affected?

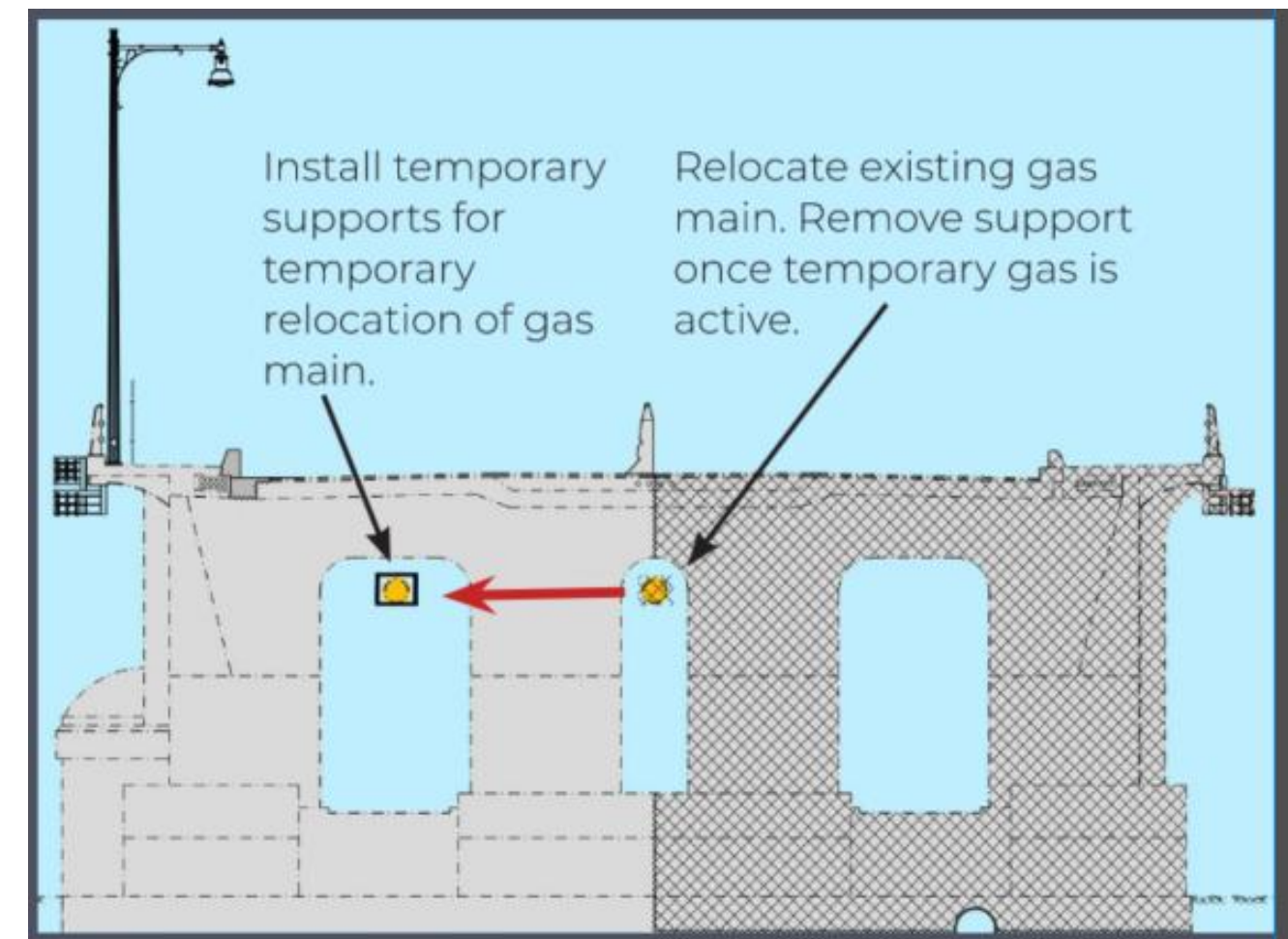
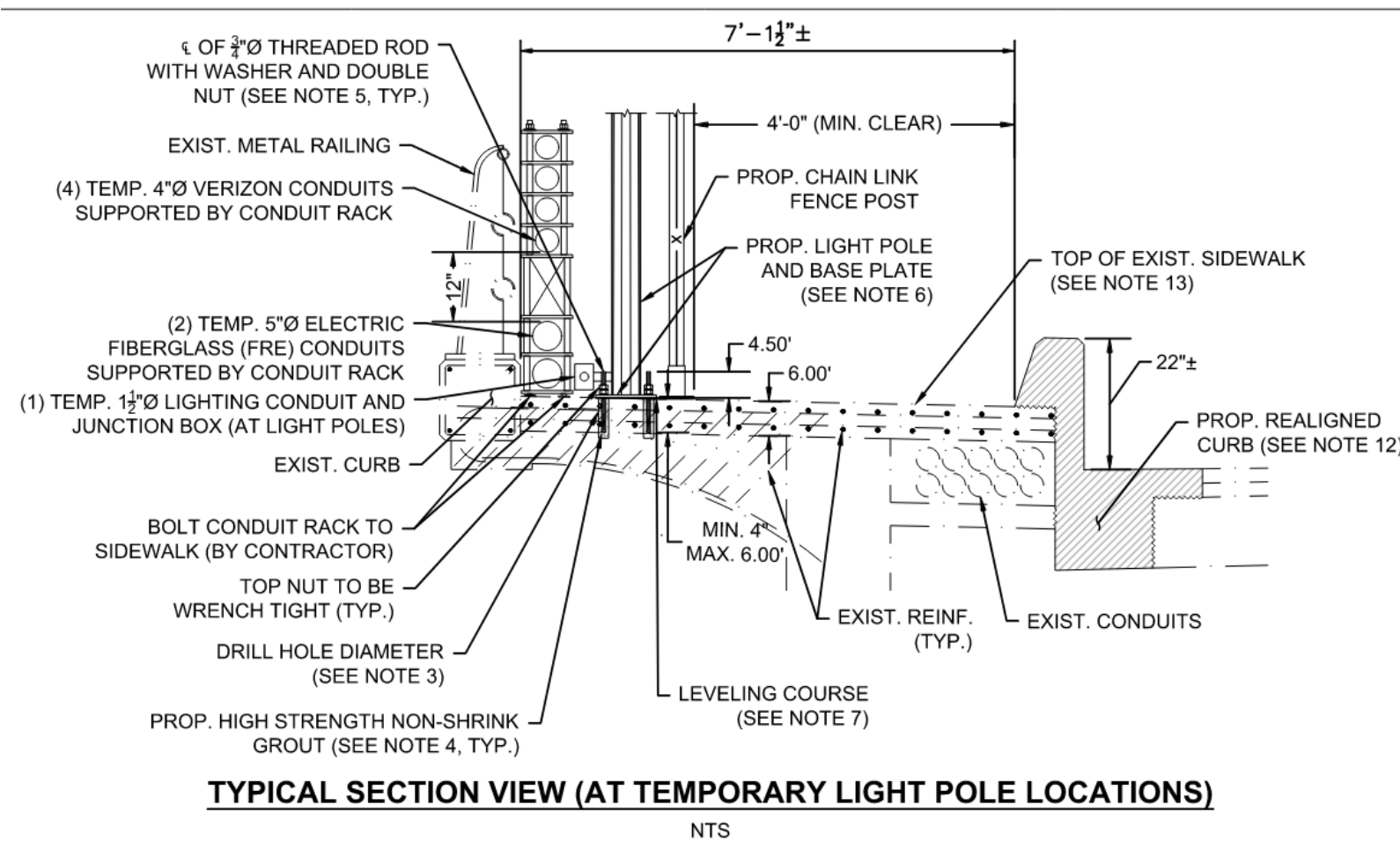
Construction Staging & Impacts – Stage 1 - 2026

- Two lanes and pedestrians on the downstream (east) side
- Temporary utilities
 - Gas
 - Electric
 - Telecomm
- Temporary lighting
- Curb relocation
- Anticipated for mid-April start
- Stage 1 demolition anticipated for late summer start



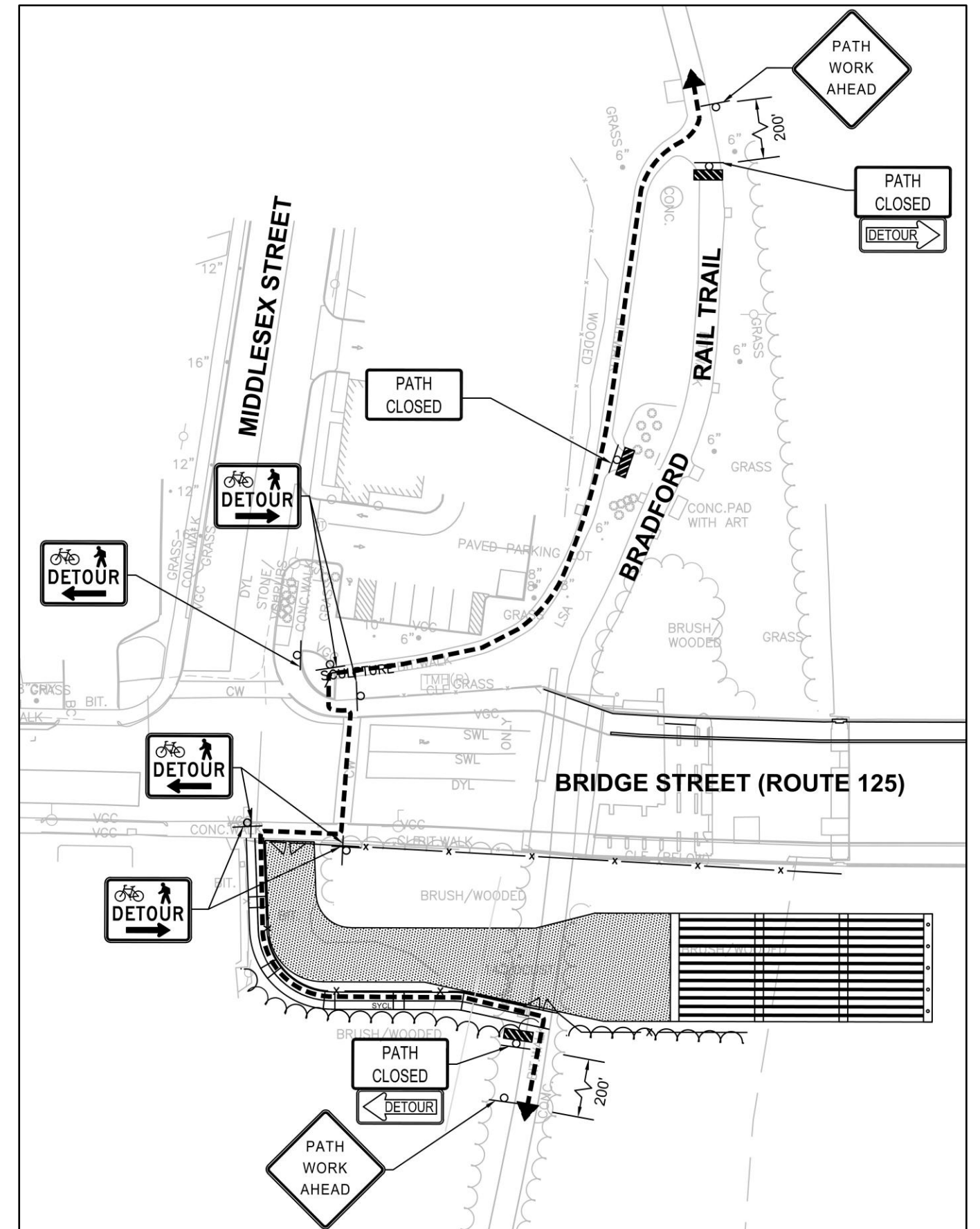
Early Utility Relocations –2026

- Prior to curblines work
- Electrical and communication lines on the sidewalk behind barrier
- Gas line relocated one bay to the upstream (west)
- Staged work zones for utility tie-ins at Bridge Street/Middlesex Street
- Anticipated for mid-April start

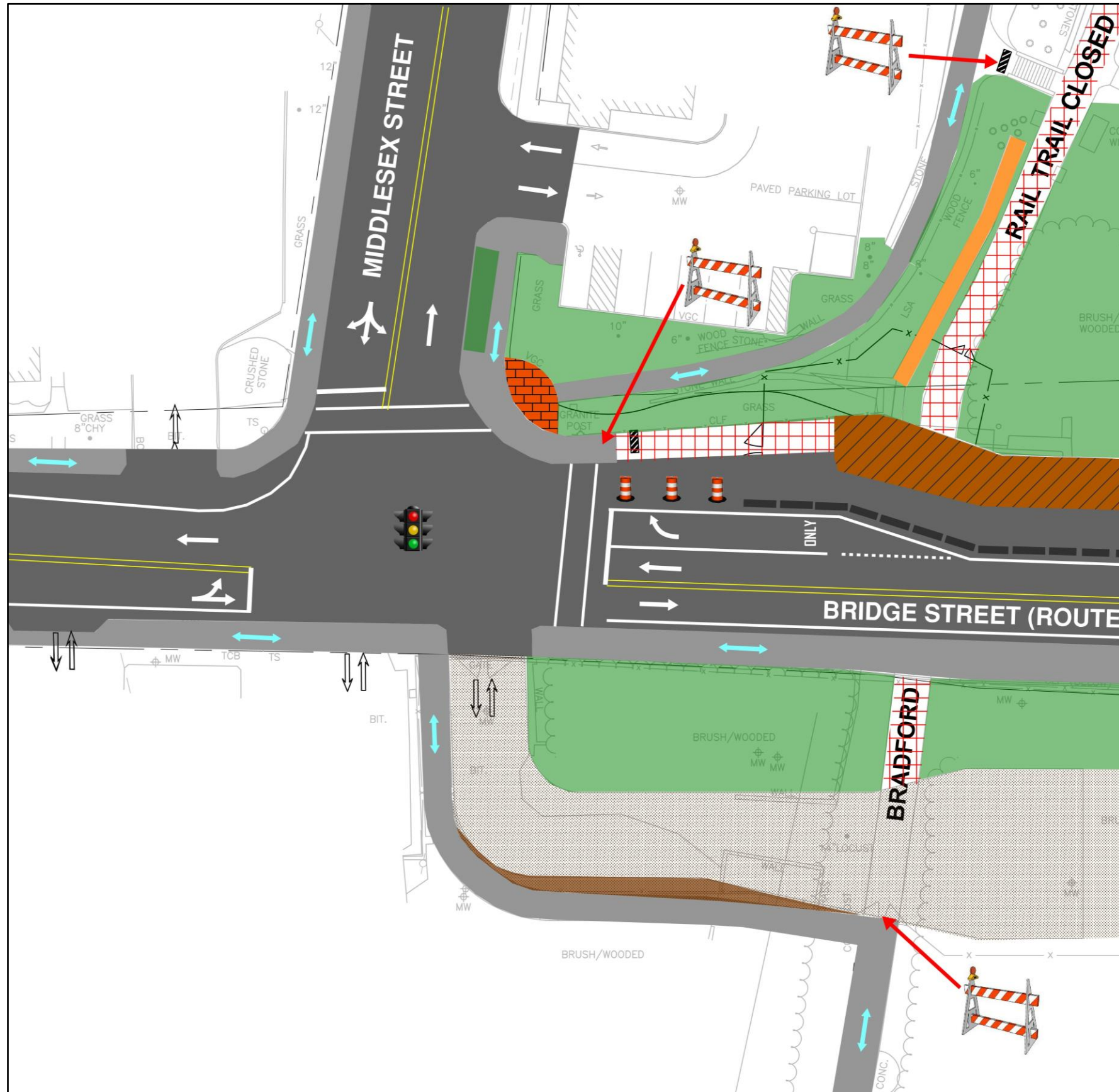


Wharf Construction and Bradford Rail Trail Detour – 2026

- Clearing, grubbing, and erosion/sediment control
- Provide separation between SUP detour and the temporary wharf access road
- Rail trail detoured
- Wharf construction
- Temporary wharf:
 - Access structure on three pile bents on south shoreline
- Anticipated to start summer 2026

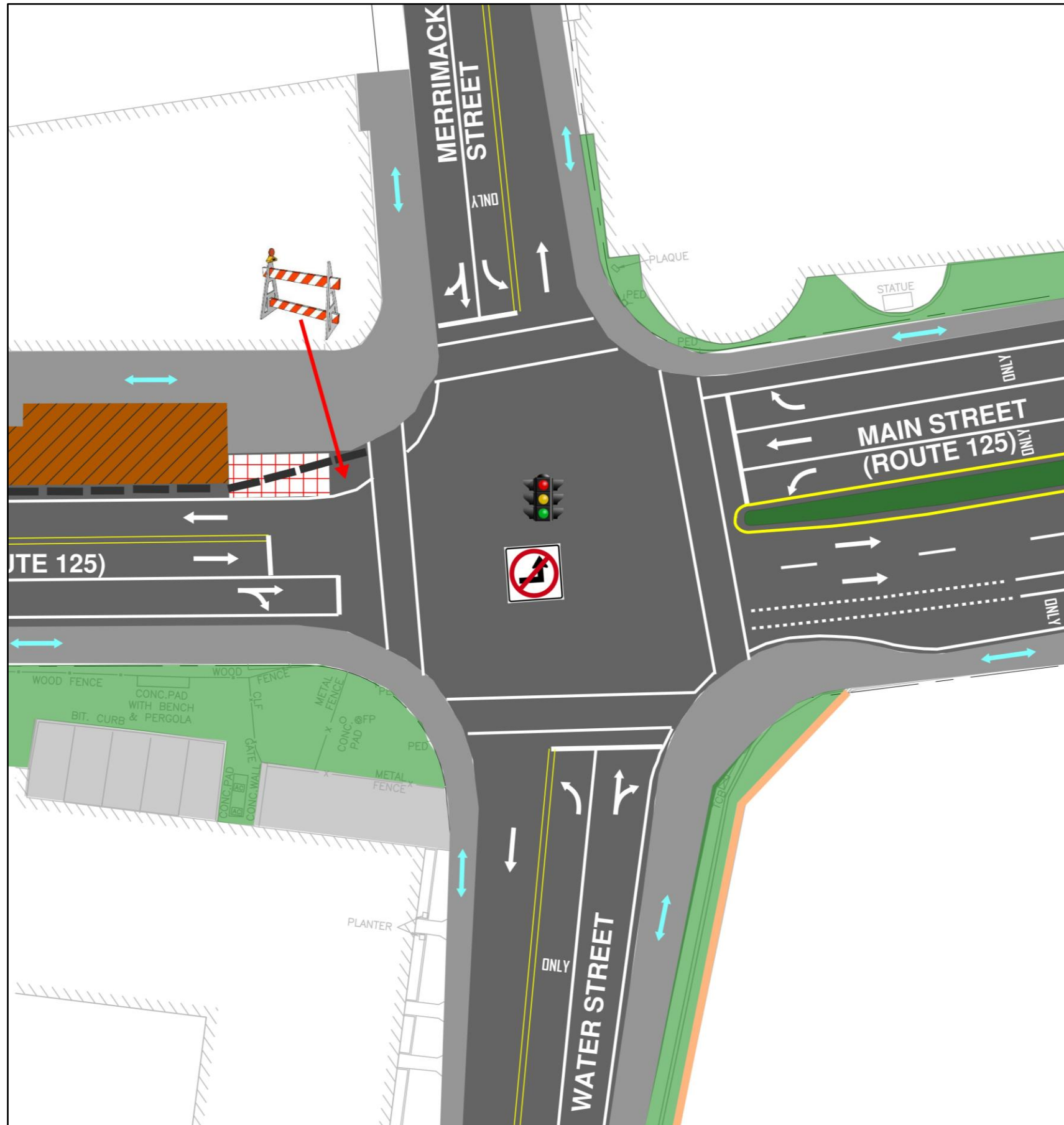


Stage 1 – Bridge Street/Middlesex Street



- All traffic movements as normal
- Access to rail trail maintained via detour
- Sidewalk on upstream (west) side of the bridge closed, all pedestrian access across bridge via sidewalk on downstream (east) side of the bridge

Stage 1 – Bridge Street/Merrimack Street/Water Street



- Northbound left turn (to downtown) restricted – Detour via Bailey Blvd and Emerson St
- Rightmost southbound (to Bradford) lane converted to right-turn only
- Sidewalk on upstream (west) side of the bridge closed, all pedestrian access across bridge via sidewalk on downstream (east) side of the bridge
- Access to Dempsey Boardwalk as normal

Construction Staging & Impacts – Stage 2 – 2026-2028

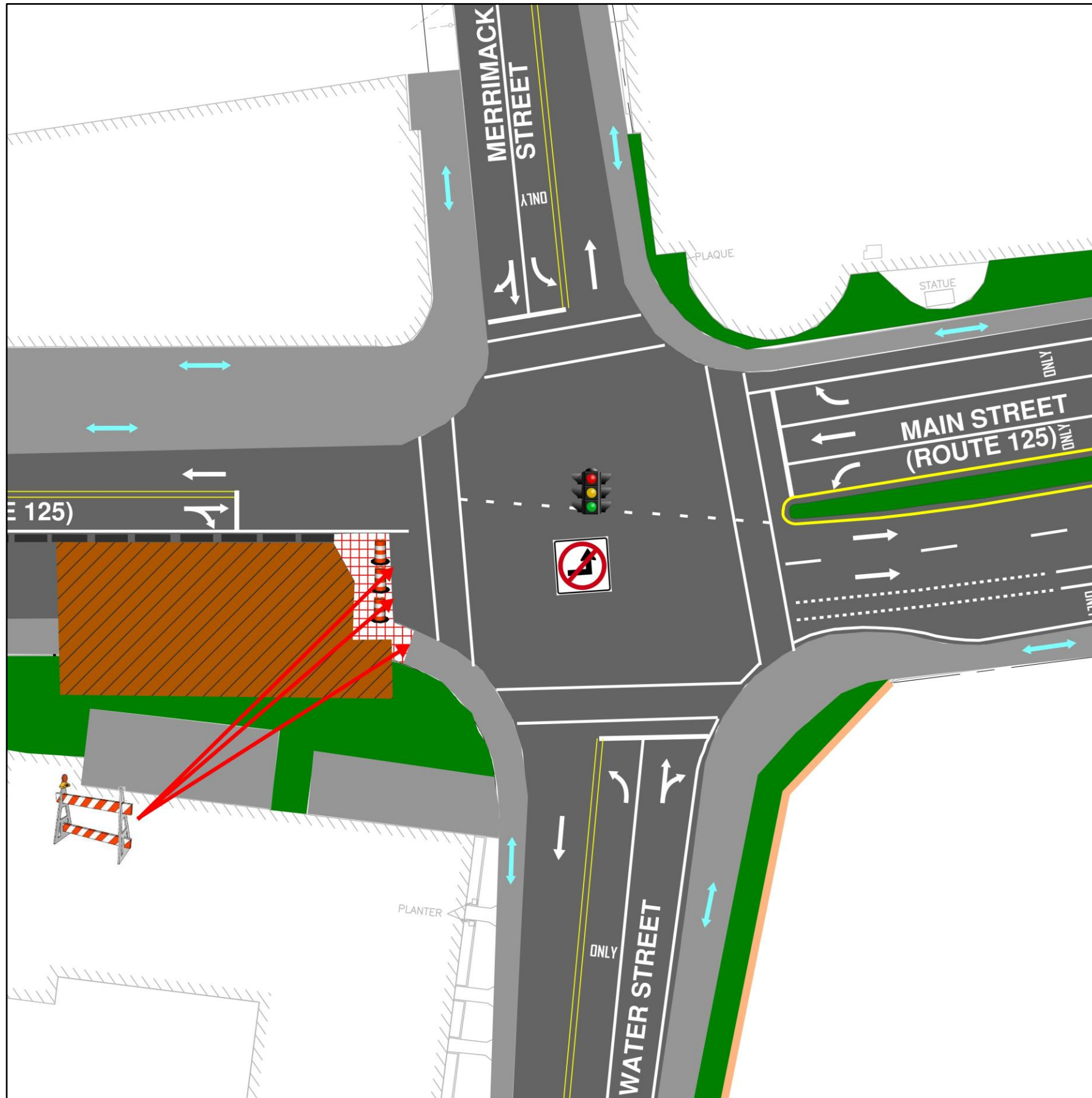


Stage 2 – Bridge Street/Middlesex Street



- Southbound (to Bradford) traffic operates from a shared through/right-turn lane
- Access to rail trail maintained via detour
- Sidewalk on downstream (east) side of the bridge closed, all pedestrian access across bridge via sidewalk on upstream (west) side of the bridge

Stage 2 – Bridge Street/Merrimack Street/Water Street

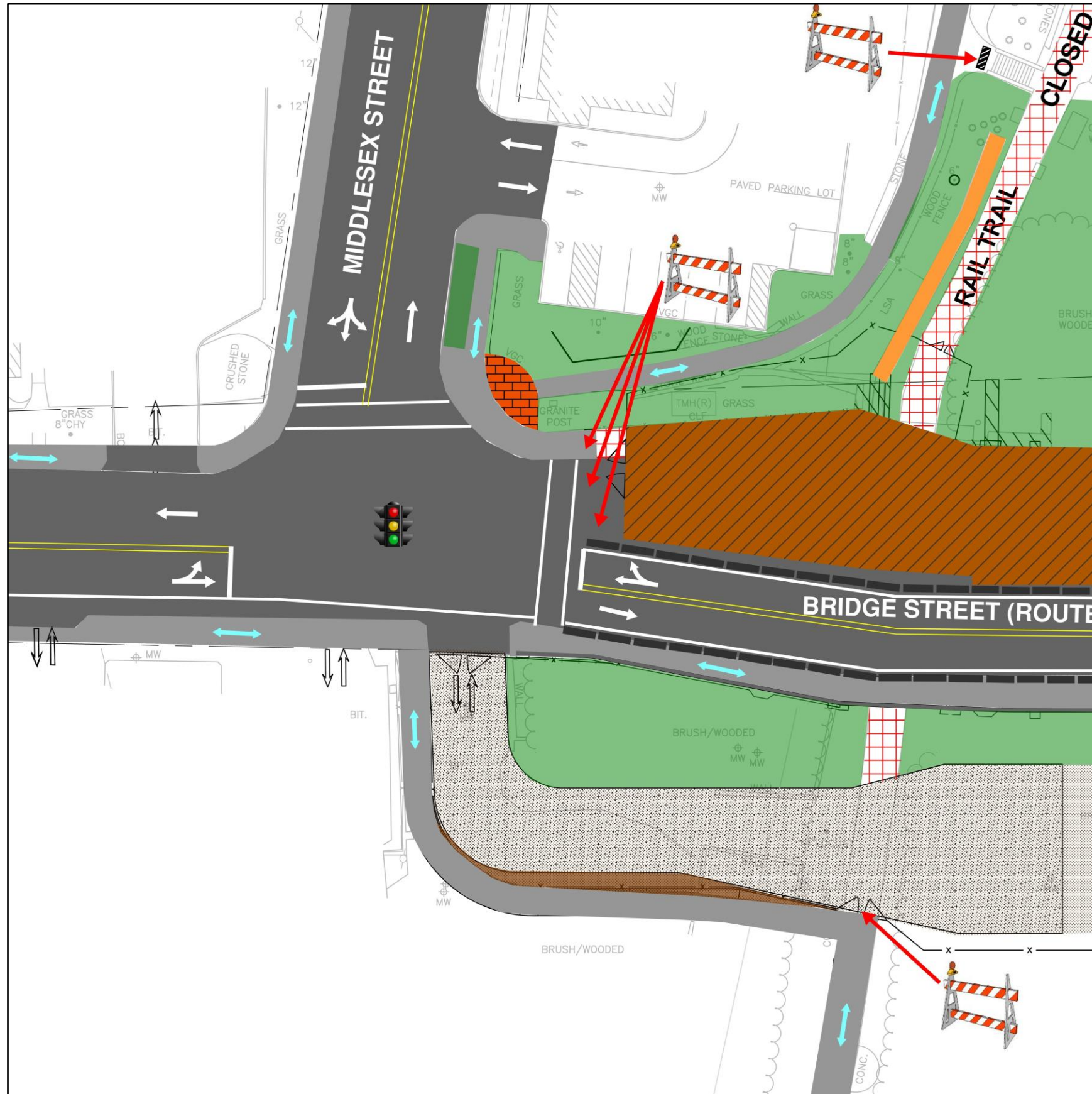


- Northbound (to Haverhill) traffic operates from a shared through/right-turn lane
- Northbound left turn (to downtown) restricted – Detour via Bailey Blvd and Emerson St
- Rightmost southbound lane converted to right-turn only
- Sidewalk on downstream (east) side of the bridge closed, all pedestrian access across bridge via sidewalk on upstream (west) side of the bridge
- Access to Dempsey Boardwalk as normal

Construction Staging & Impacts – Stage 3 – 2028-2031

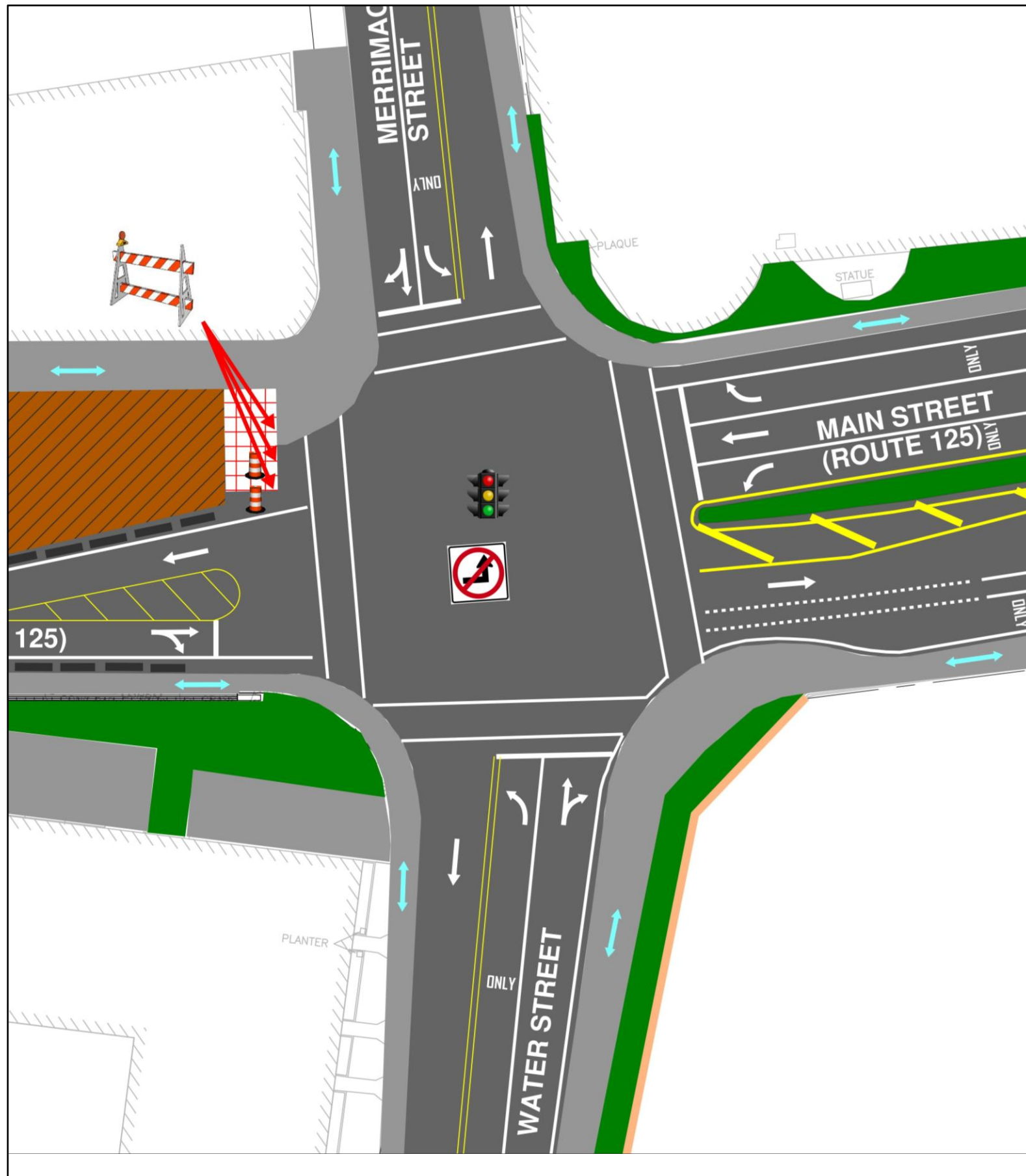


Stage 3 – Bridge Street/Middlesex Street



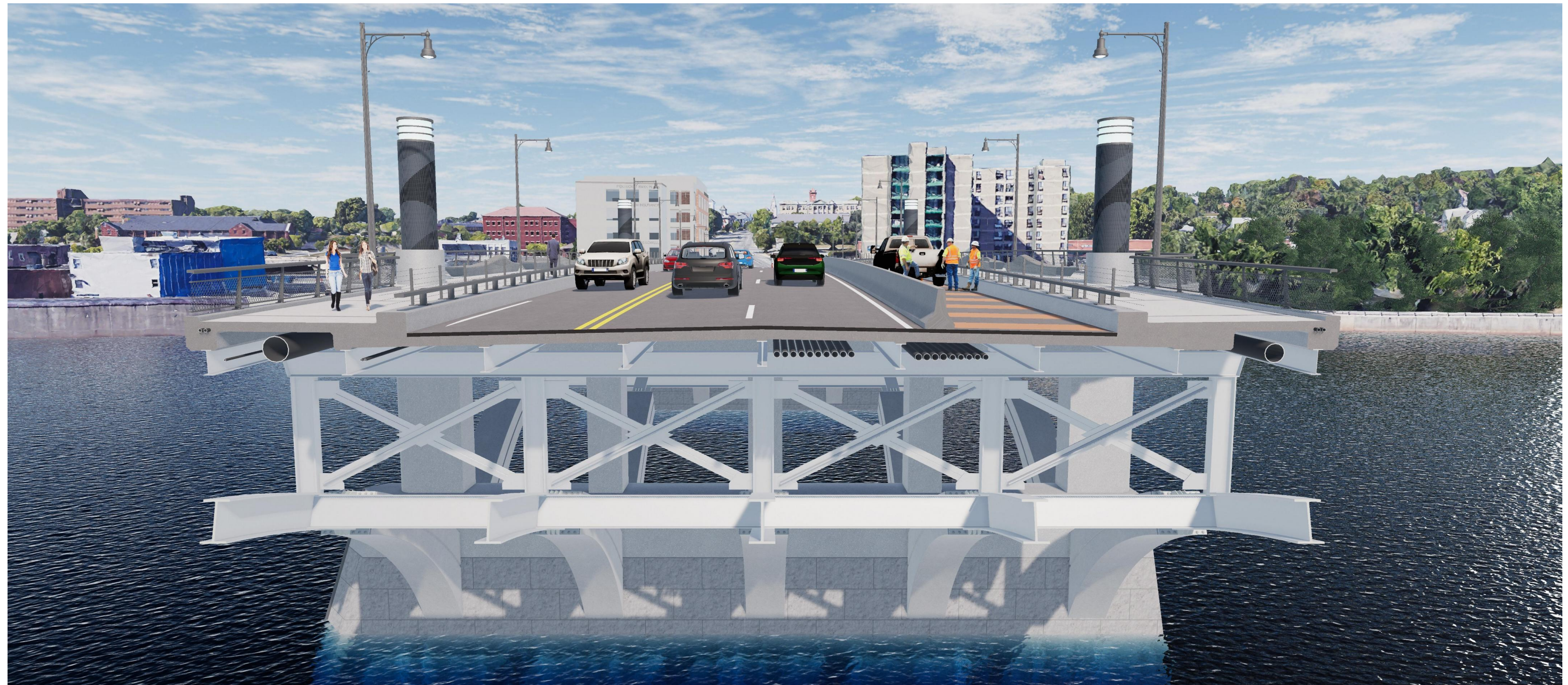
- Southbound (to Bradford) traffic operates from a shared through/right-turn lane
- Access to rail trail maintained via detour
- Sidewalk on upstream (west) side of the bridge closed, all pedestrian access across bridge via sidewalk on downstream (east) side of the bridge

Stage 3 – Bridge Street/Merrimack Street/Water Street

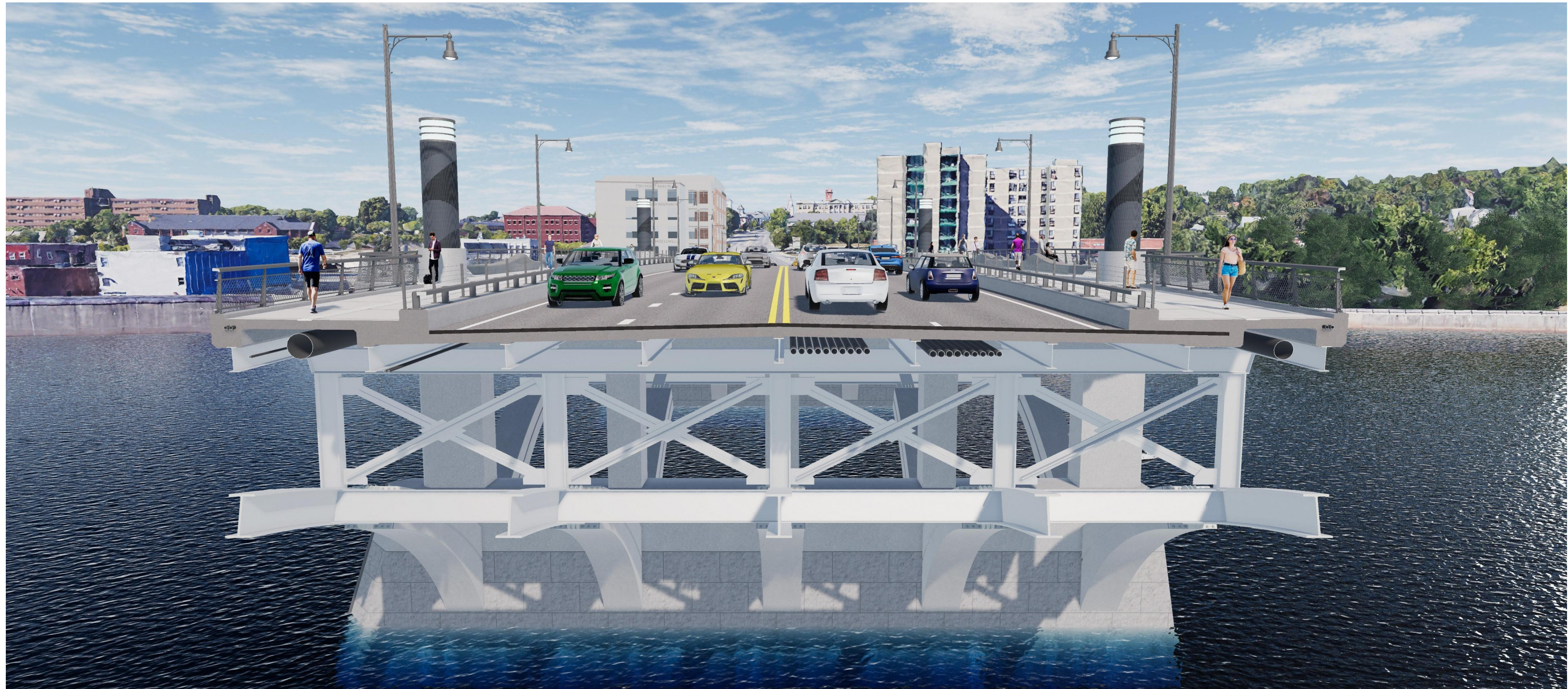


- Northbound (to Haverhill) traffic operates from a shared through/right-turn lane
- Northbound left turn (to downtown) restricted – Detour via Bailey Blvd and Emerson St
- Rightmost southbound lane converted to right-turn only
- Sidewalk on upstream (west) side of the bridge closed, all pedestrian access across bridge via sidewalk on downstream (east) side of the bridge
- Access to Dempsey Boardwalk as normal

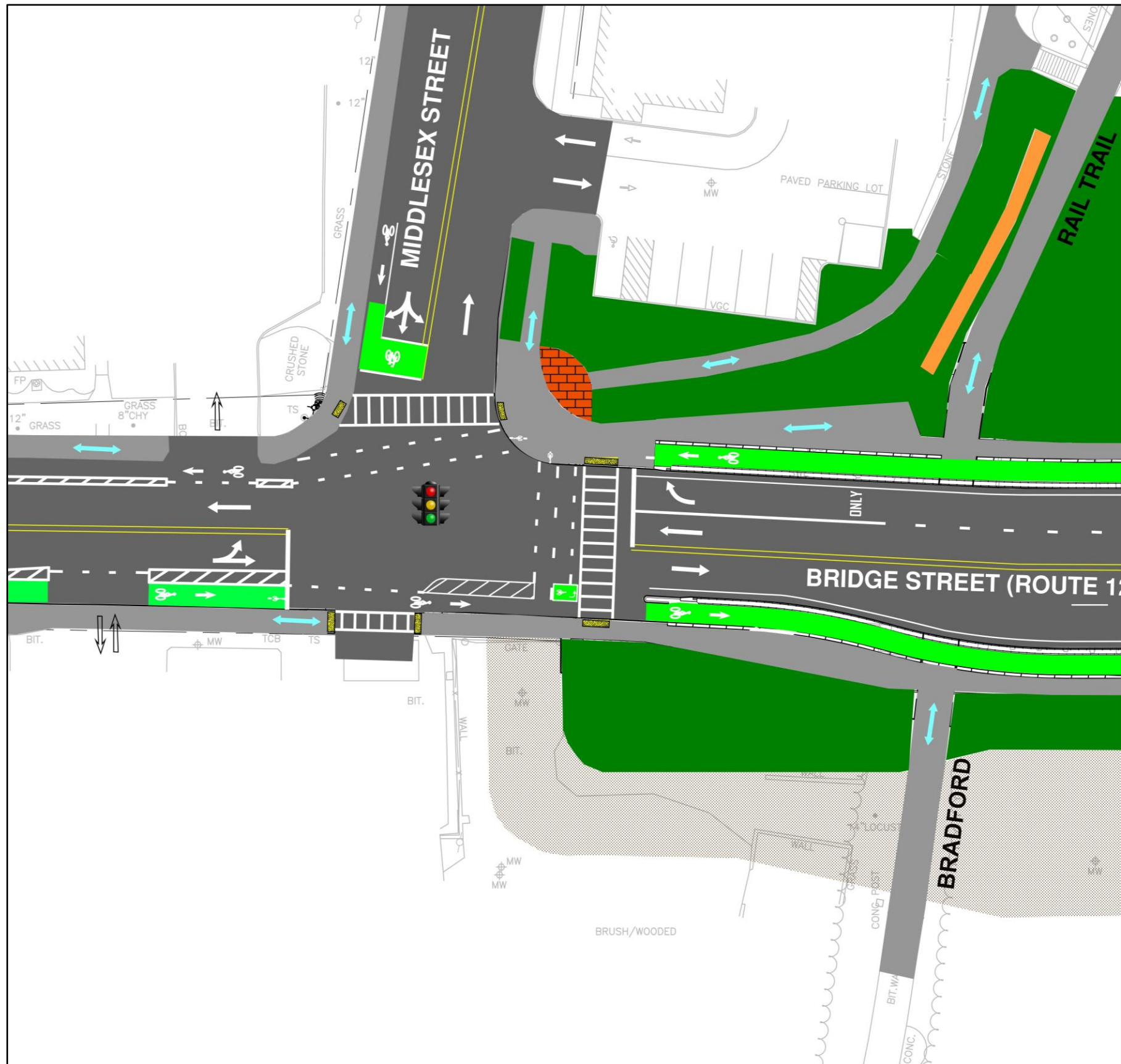
Construction Staging & Impacts – Stage 4 – Spring 2032



Construction Staging & Impacts – Final Conditions –Spring 2032

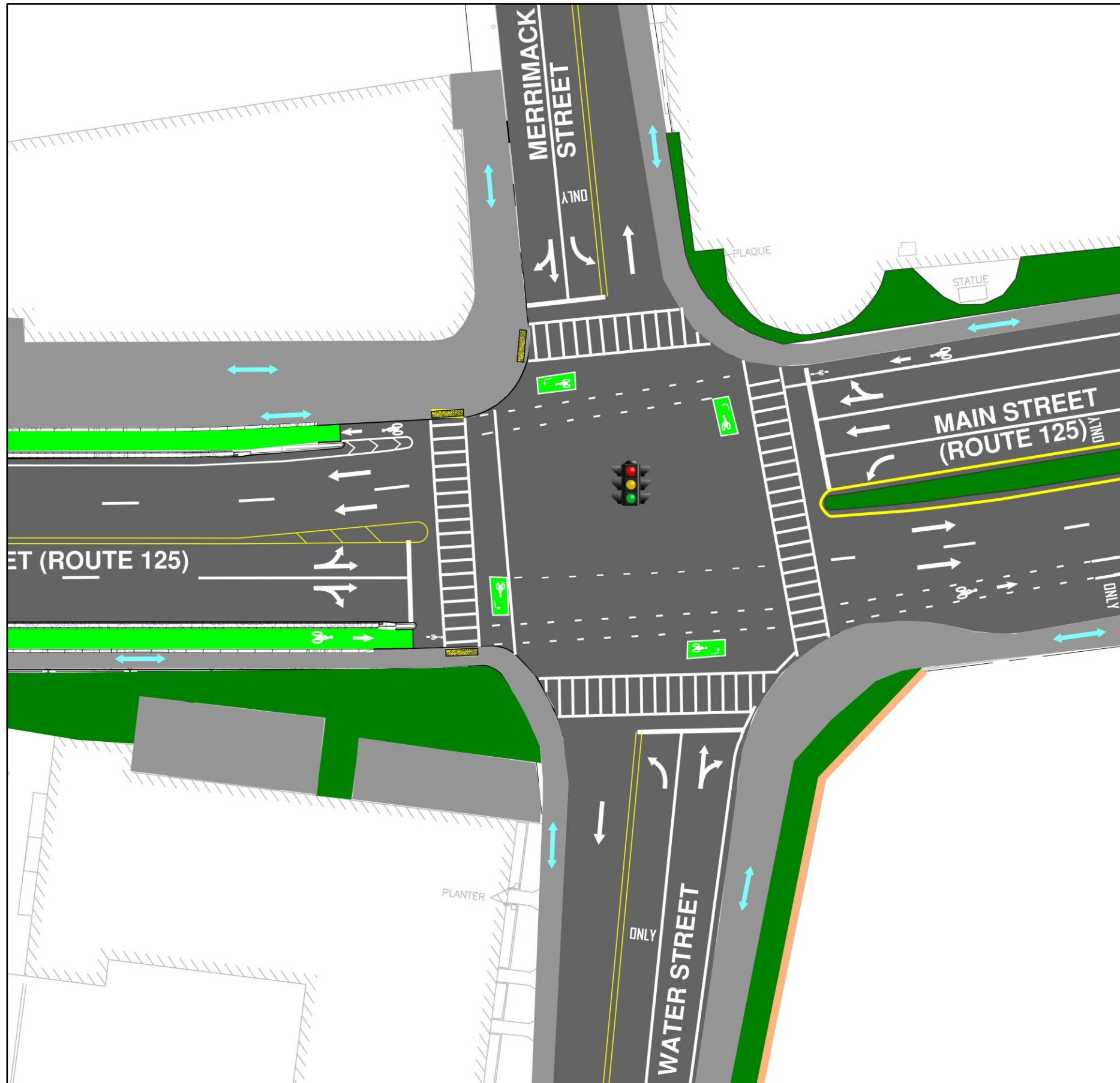


Completed Project – Bridge Street/Middlesex Street



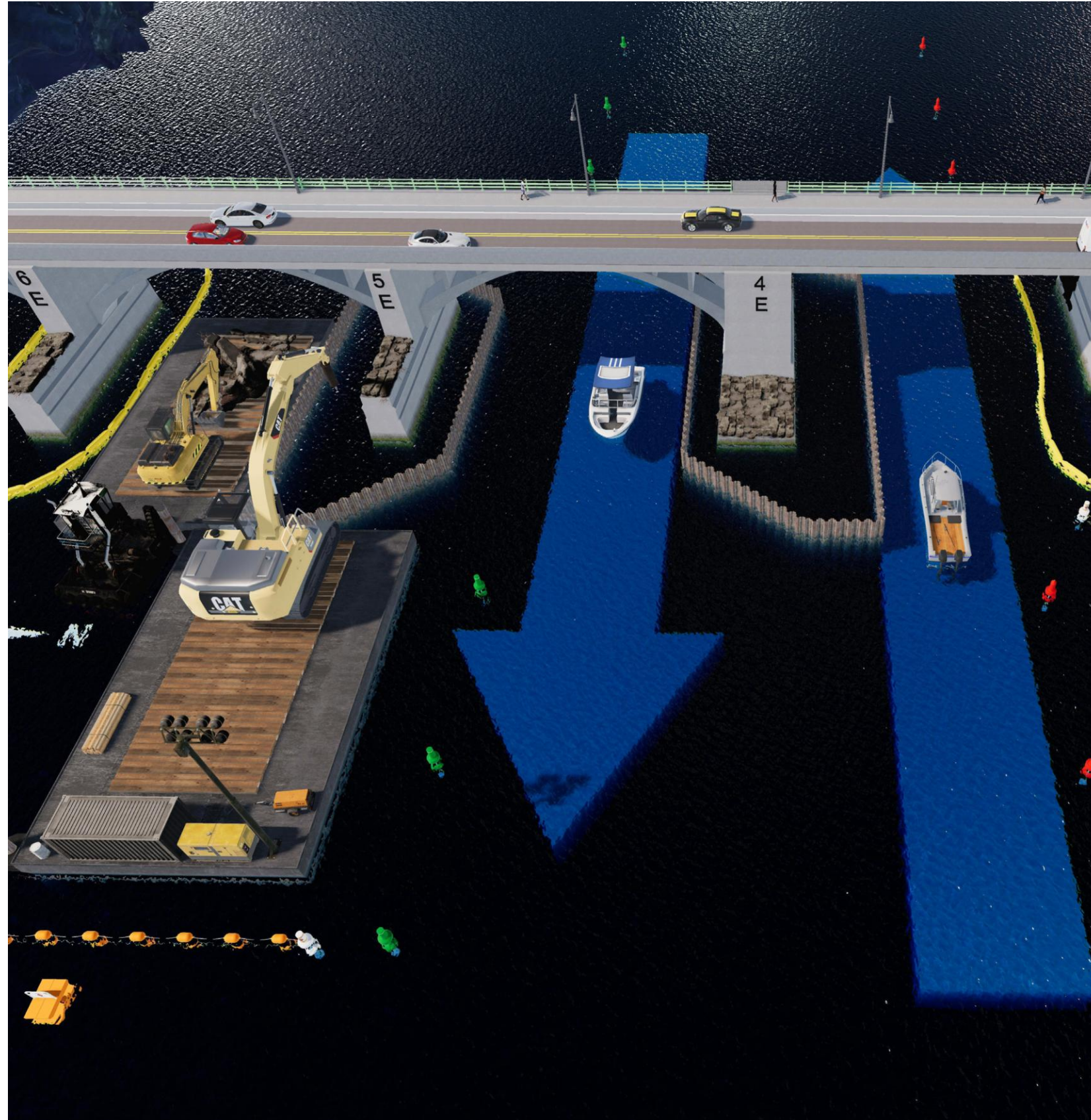
- Southbound (to Bradford) traffic operates from dedicated lanes:
 - Through lane
 - Right-turn lane
- Sidewalks and bicycle facilities established on both sides of the bridge
- Rail trail access under the bridge reopened

Completed Project – Bridge Street/Merrimack Street/Water Street



- Northbound left-turn restriction removed and all movements accommodated
- Through movement restored to rightmost southbound lane
- Sidewalks and bicycle facilities established on both sides of the bridge
- Intersection equipped with complete streets features
- Access to Dempsey Boardwalk as normal

In-Water Work Highlights



- Middlesex-TranSystems approach reduces the number of cofferdams
- Demolition debris caught on barges and recycled at downstream laydown area
- Reduced noise and truck traffic in Haverhill
- Two, 30' navigation channels maintained for recreational boaters
- Sturgeon consultant and fisheries observers will ensure environmental compliance



Our Good Neighbor Promise



- We are surrounded by homes and businesses
- We are on a key thoroughfare for Haverhill including for emergency response
- Maintaining livability during construction:
 - Preconstruction survey of abutting properties
 - VMS boards and static signs communicate travel information to drivers
 - Use of barges to remove demolition debris reduces construction traffic
 - Noise and dust control plans will be submitted to MassDOT for approval
 - Noise levels to be monitored
 - Automated vibration monitoring during demolition
 - Wetting of old bridge piers controls dust
 - Construction personnel to guide/assist pedestrians at Middlesex and Water Streets during peak hours
 - Traffic management monitored and revised if needed
 - Full support to/coordination with MassDOT's established outreach program



Construction phase public involvement

Outreach Goals: Stability & Continuity

The
HAVERHILL
GAZETTE

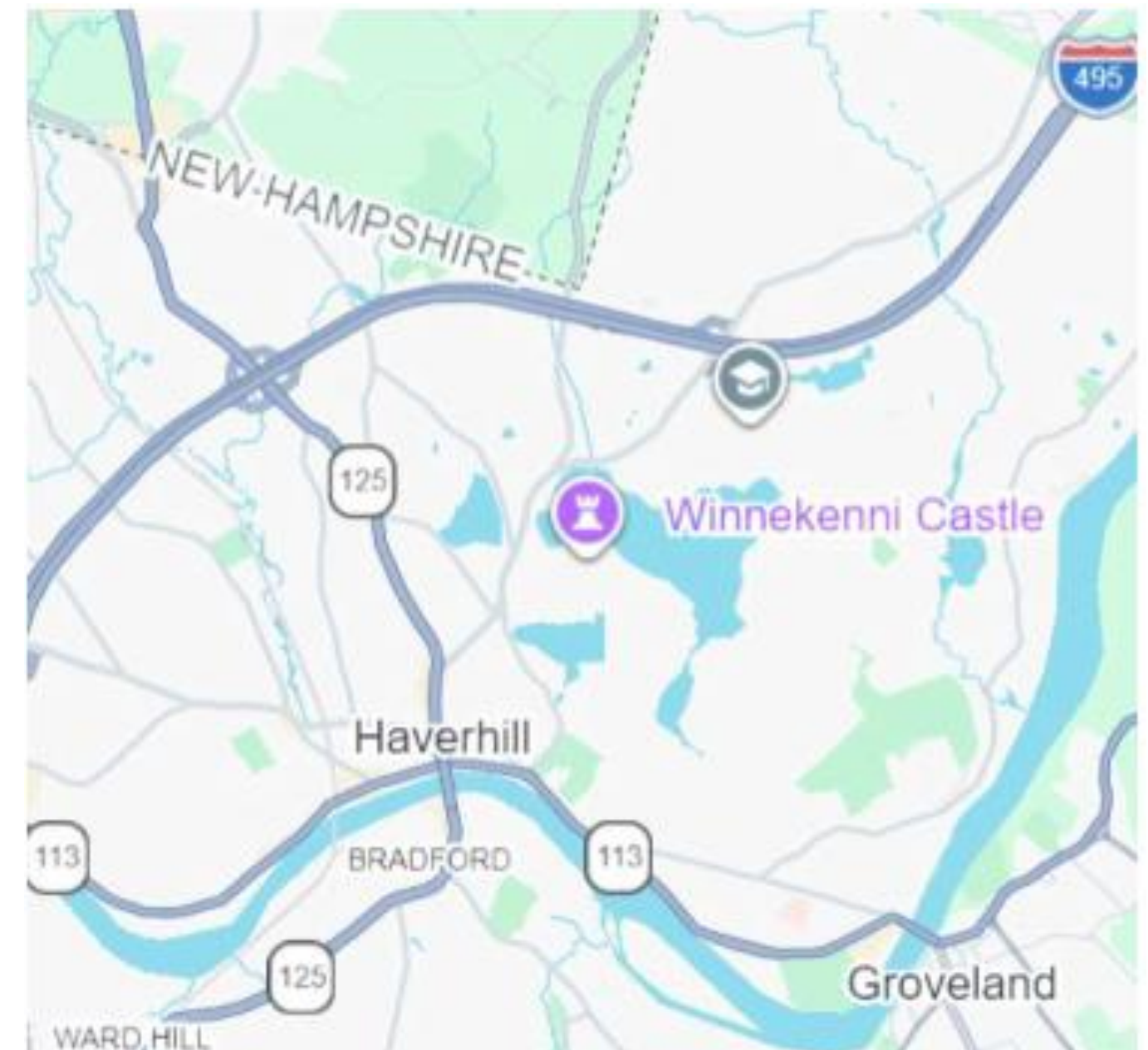
97.9 WHAV
WHAV.NET Catch the Wave

- Same:
 - Website: mass.gov/basiliere-bridge-project-haverhill
 - Email address: haverhillbasilierebridge@dot.state.ma.us
 - Media outlets used during design
 - Flyer drop and staffed table locations
 - Harbor Place meeting location preferred
 - Haitian, Portuguese, Spanish interpretation at meetings



Outreach Goals: Expand Our Range

- Integrate elements from spring 2025 repairs:
 - Information distributed to local governments that share a border with Haverhill, including Atkinson and Plaistow
 - Information distributed to public access cable channels in the same municipalities
 - Information shared with NHDOT
 - Encourage regional traffic to choose I-495 or Groveland
- Remind recipients that downtown Haverhill businesses are open and ready to serve them



Outreach Next Steps: A Busy Spring

- Convert project website to support construction period progress report and lookahead
 - www.mass.gov/info-details/about-the-i-495-andover-lawrence-bridge-replacements is already in construction and is a good example
- Begin issuing regular progress reports and lookahead email bulletins as construction gets underway – *all community members are encouraged to sign up*
- Contact the project at haverhillbasilierebridge@dot.state.ma.us with questions or concerns



Questions and discussion



Thank You

**PFC Ralph T. Basiliere
Bridge Replacement**
Public Information Meeting

Haverhill | March 5, 2026 | 6:00 PM

Project File No. 605304

