



# PFC Ralph T. Basiliere Bridge Replacement

## *Public Workshop 1*

Haverhill | April 3 2023 | 5:30 PM

Project File No. 605304





# Agenda

1. Welcome & Overview
2. Orienting Presentation
3. Breakout Groups
  - Bridge Aesthetics
  - Circulation & Open Space
  - Cross Sections
  - Traffic
4. Reporting from Breakout Groups





# Welcome and Meeting Overview:

- 15-minute presentation
  - Eamon Kernan, Project Manager, Massachusetts Department of Transportation (MassDOT)
  - Etty Padmodipoetro, Urban Idea Lab, Bridge Architecture
  - Nathaniel Cabral-Curtis, Communications and Public Involvement
- Breakout Groups
  - Bridge Aesthetics - Etty Padmodipoetro, Urban Idea Lab
  - Circulation and Open Space – Don Kindsvatter, Kathy Lynch, Urban Idea Lab
  - Construction Phasing – Paul Gwiazda
  - Traffic/Cross Sections – Eric Maki, WSP

## Language Translation Speakers

- **Portuguese**
  - KATIA MORRIS
- **Spanish**
  - FRANCES PERNILLO

## Notice of MassDOT / MBTA Policy Diversity and Civil Rights

All MassDOT / MBTA activities, including public meetings, are free of discrimination. The MassDOT / MBTA complies with all federal and state civil rights requirements, preventing discrimination on the basis of race, color, national origin, limited English proficiency, and additional protected characteristics. We welcome the diversity from across our entire service area. If you have any questions or concerns, please visit: [www.mass.gov/nondiscrimination-in-transportation-program](http://www.mass.gov/nondiscrimination-in-transportation-program) / [www.mbta.com/titlevi](http://www.mbta.com/titlevi) to reach the Office of Diversity and Civil Rights.

*All questions and comments are welcome and appreciated.*

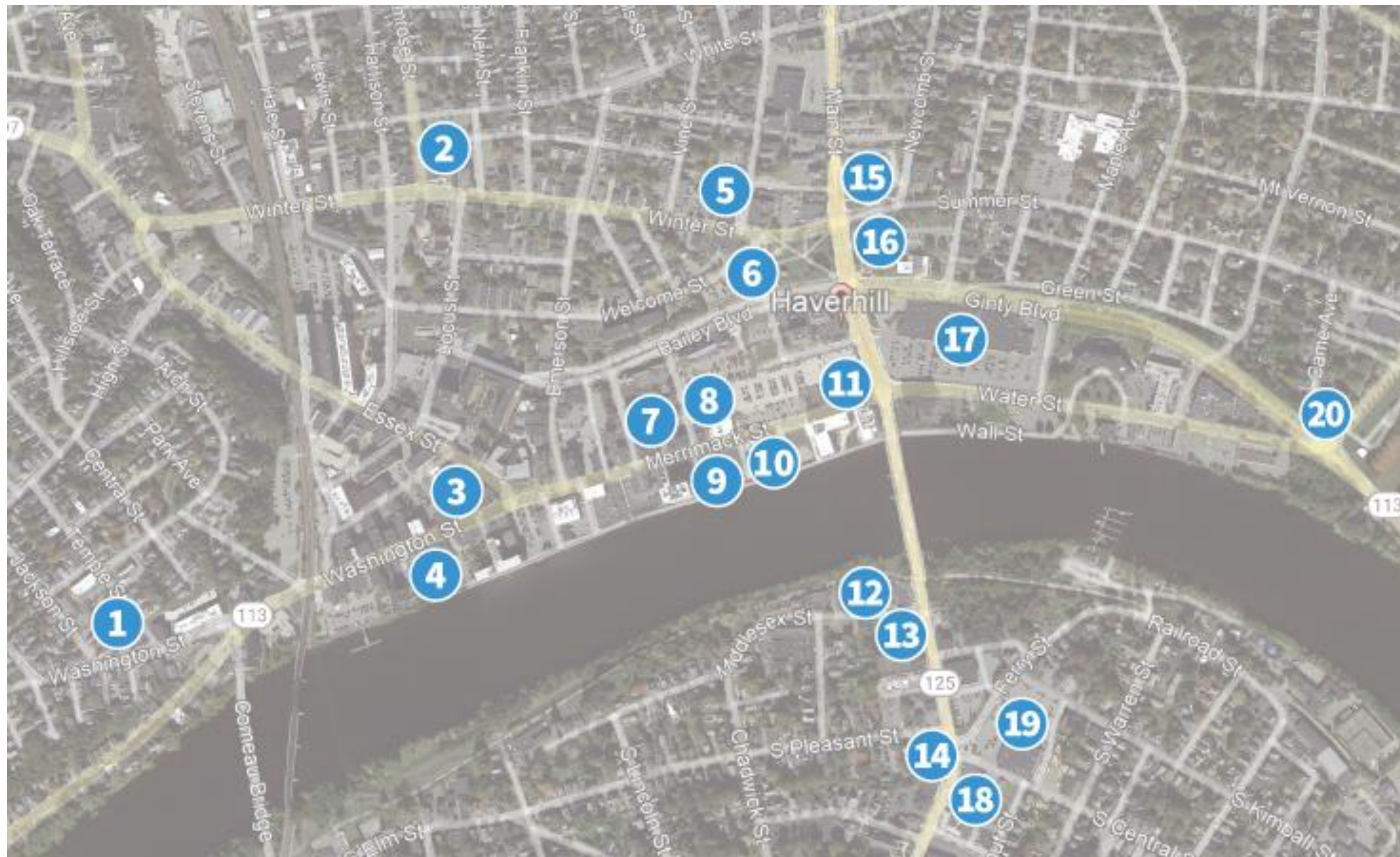
*Please refrain from any disrespectful comments.*

## How to Participate

- Listen and view the 15-minute presentation
- Circulate through the breakout sessions
  - We will rotate breakout tables every 20 minutes
  - Please try to visit each table
- Please stay for breakout reporting if you have time
- Representatives of the media can direct media inquiries to [Jacquelyn.Goddard@dot.state.ma.us](mailto:Jacquelyn.Goddard@dot.state.ma.us)



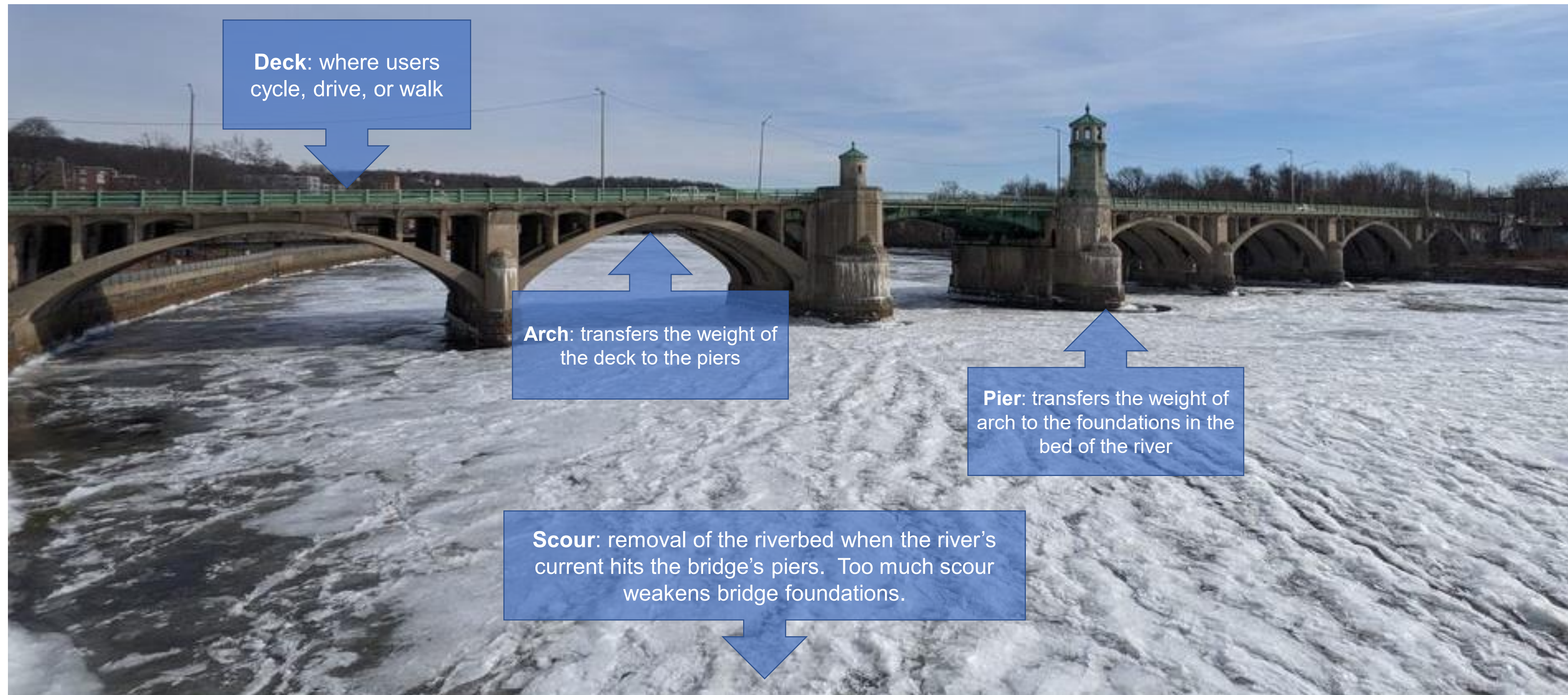
# Flyer Drop Locations



1. Smart Bike
2. Saint James Parish
3. Battle Grounds Coffee Co.
4. MVRTA Washington Square
5. Haverhill YMCA
6. Haverhill Citizen Center
7. TD Bank
8. La Pizza di Forno
9. Salvation Army Thrift Store
10. A-1 Deli
11. Pentucket Bank
12. Dunkin Donuts
13. Wendy's
14. A Sweet Affair
15. Haverhill City Hall
16. Haverhill Public Library
17. Market Basket
18. Nouria Shell Station
19. The Fix 2 (barbershop)
20. Riverside Cycle

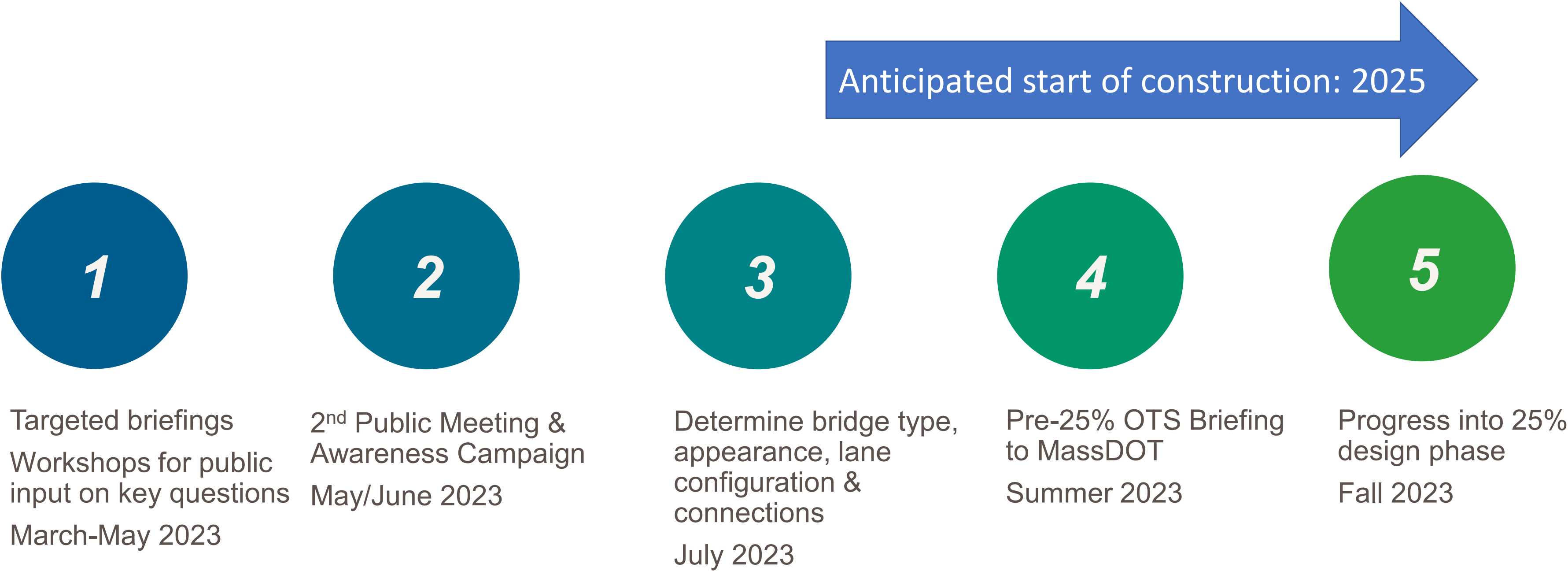


# Key Terms





# Our next steps





# Bridge Architecture and Urban Design

- Context
- Connections
- Components



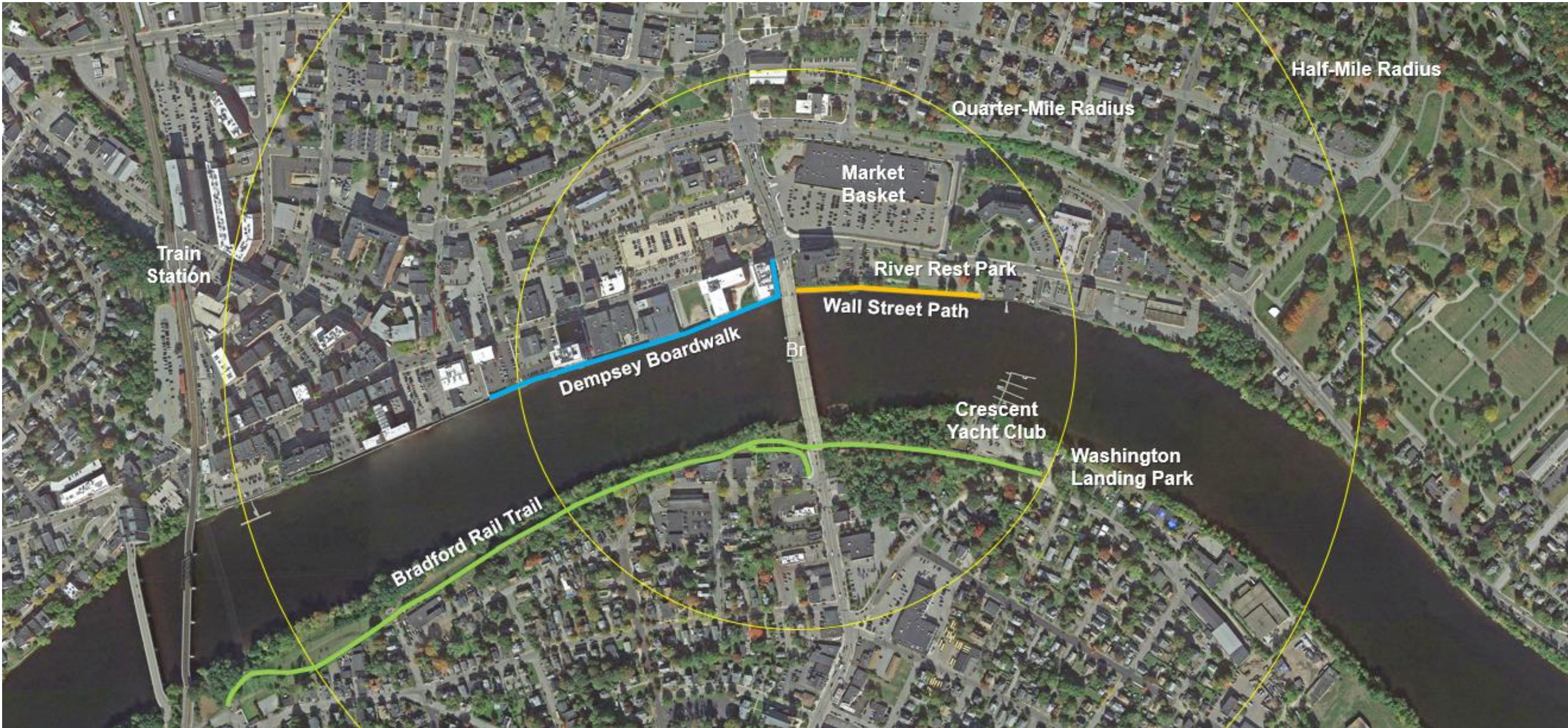


## Bridge Architecture Principles

- Create a strong relationship between the bridge and its physical context
- Incorporate aesthetics into the bridge form, not as add-on elements
- Create inviting spaces for people to enjoy
- Create a strong visual connection between neighborhoods on either bank of the Merrimack



# Context within Haverhill





# Issues & Opportunities: Bicycle Access



Maintain bicycle access  
through intersection



# Issues & Opportunities: Connections



Investigate potential connections between bridge and grade



Dempsey Boardwalk



Wall Street Path



# Issues & Opportunities: Bridge



How can these iconic features be referenced?



# Potential Proposed Pier Locations





# Issues & Opportunities: Views from the Bridge





# Issues & Opportunities: Open Space – Bradford Rail Trail



Enhance rail trail and existing open space



# Issues & Opportunities: Open Space – Bradford Rail Trail Connection



Provide strong connection  
from bridge to rail trail



# Bridges Should be Beautiful



Burns Bridge, Worcester (*Image by FST*)



Concept for Parabolic Girder Bridge



The Berkley-Dighton Bridge



# Components: Overlook Examples



Burns Bridge, Worcester



Hamburg-Hafencity, Germany



Mario Cuomo Bridge, NY



# River Activities





# Interpretive Signage





# Vehicle Barrier Examples



Burns Bridge, Worcester



Crash-Tested Barrier with  
Decorative Barrier at Right



# Railing Examples



Modern



Traditional



# Lighting







# Breakout Groups and Reporting



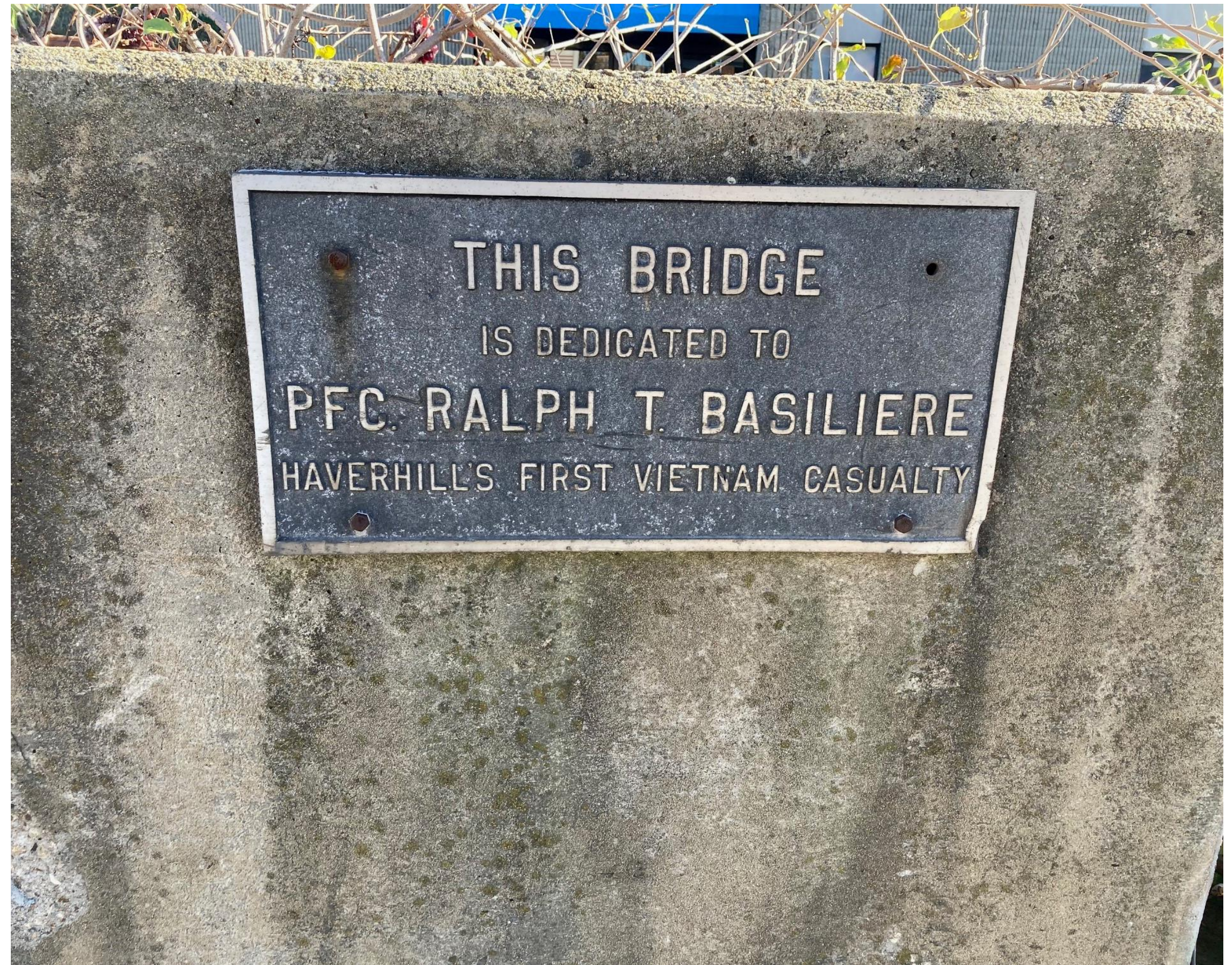


**How will we  
keep you  
informed?**



## Upcoming public outreach

- March, April, May: workshop sessions to discuss:
  - Bridge type
  - Bridge appearance
  - Lane configuration
  - Bicycle/pedestrian accommodations & connections
- March, April, May:
  - Stakeholder discussions
- May: additional staffed tables to boost project awareness
- June: 2<sup>nd</sup> public information meeting to provide an update on concept design





## How to reach us?

- Submit written comments to:  
Carrie Lavallee, P.E., Chief Engineer  
MassDOT  
10 Park Plaza  
Boston, MA 02116  
Attention: BRIDGE SECTION, PROJECT FILE NO. 605304
- Submit email comments to:  
[haverhillbasilierebridge@dot.state.ma.us](mailto:haverhillbasilierebridge@dot.state.ma.us)
- Visit the project website at:  
[www.mass.gov/basiliere-bridge-project-haverhill](http://www.mass.gov/basiliere-bridge-project-haverhill)





# *Thank You*

*PFC Ralph T. Basiliere*

*Bridge Replacement*

*Public Workshop 1*

Haverhill | April 3 2023 | 5:30PM

Project File No. 605304

Eamon Kernan - [Eamon.kernan@dot.state.ma.us](mailto:Eamon.kernan@dot.state.ma.us)

