



Squires Bridge Construction Project

Public Information Meeting

Somerville Public Library (Central)
September 12, 2023 | 6:30 p.m.

Project File No. 608482

Zoom Controls for Meeting Interpretation



- Listen in Spanish and Portuguese



- Ask a question and share comments



- Drop down menu to check microphone and speakers



- Raise your hand - *9 for users dialing in and Alt + Y to raise your hand



- If you are unable to access the internet or are having technical problems, please call into the meeting at +1 646 931 3860, Meeting ID: 827 0516 6649, Passcode: 223906



- Closed captioning automatically generated by Zoom

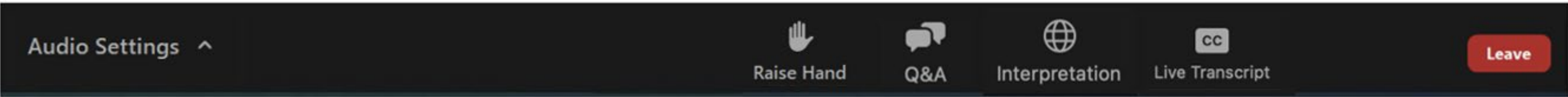
Live Transcript



- Use the View button in the upper right-hand corner to adjust the meeting view settings to your preference

If you have trouble with the meeting technology during the presentation, please call:

[1.888.799.9666]



Public Meeting Notes and Procedures

Notification of Recording

- This public meeting may be recorded. The Massachusetts Department of Transportation may choose to retain and distribute the video, still images, audio, and/or transcript. All parts of this meeting are considered public record.

Other Important Notes

- Your microphone and webcam are automatically disabled upon entering this meeting.
- The meeting will be open to questions and answers at the end of the formal presentation.

Notice of MassDOT's Policy on Diversity and Civil Rights:

- All MassDOT activities, including public meetings, are free of discrimination.
- MassDOT complies with all federal and state civil rights requirements preventing discrimination based on sex, race, color, ancestry, national origin (limited English proficiency), religion, creed, gender, sexual orientation, gender identity or expression, or veteran's status.
- We welcome the diversity from across our entire service area. If you have any questions or concerns, please visit <https://www.mass.gov/nondiscrimination-in-transportation-program> to reach the Office of Diversity and Civil Rights.

Agenda

- 01 Project Background
- 02 Project Timeline
- 03 Transportation Alternatives
- 04 Community Engagement





Project Background

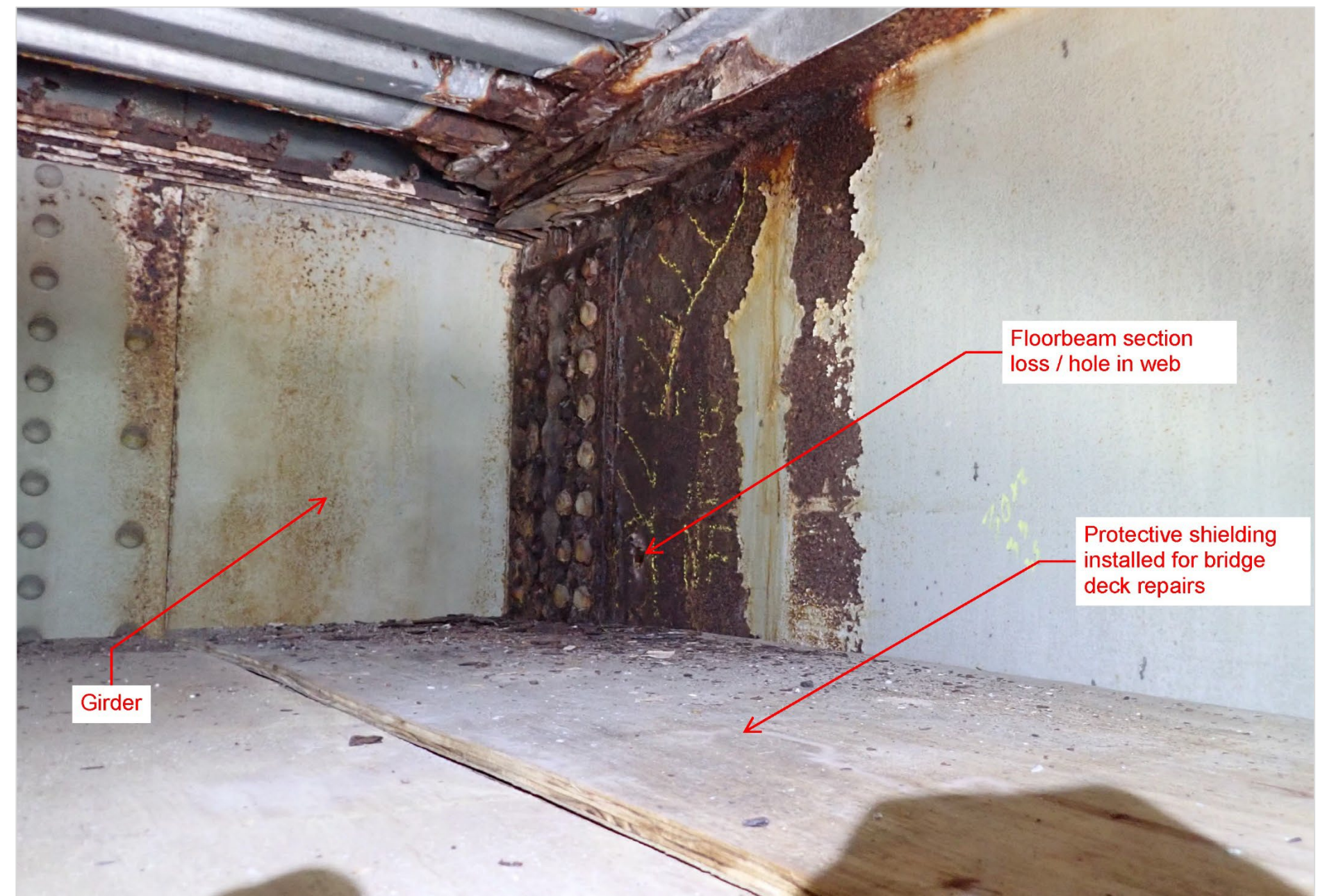
Project Information

- Squires Bridge carries Route 28/McGrath Highway over the Union Square Branch of the Green Line, the Fitchburg Commuter Rail Line, and Somerville Avenue Extension. Construction activities will take place over 25 consecutive days from **Monday, September 18** through **Thursday, October 12**.

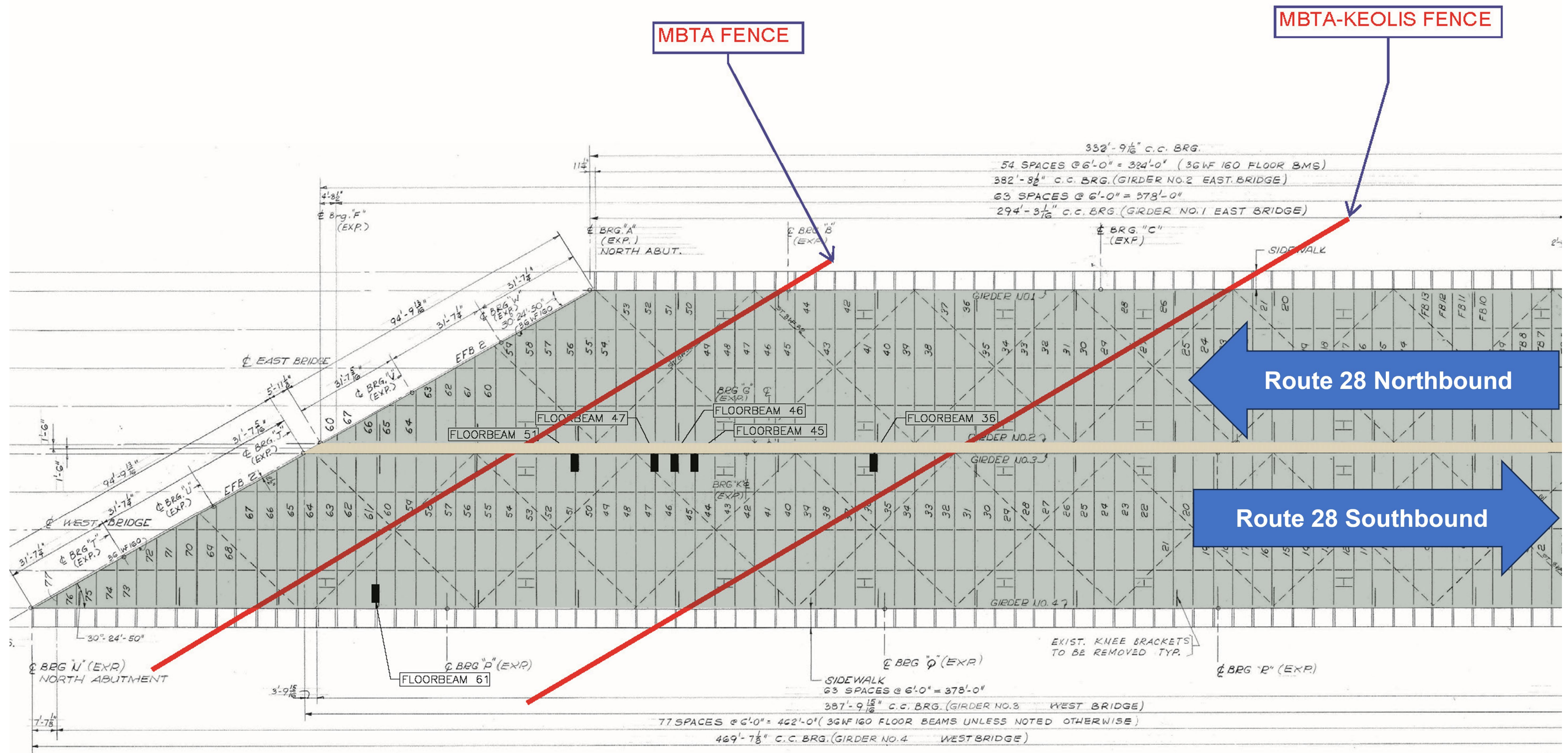


Project Information (cont.)

- MassDOT's Bridge Division issued an amended bridge rating report in September 2022 based on an updated inspection conducted in August 2022.
- The rating report identified six floor beam locations with significant deterioration where they connect to the girders that warranted repairs.



Repair Locations



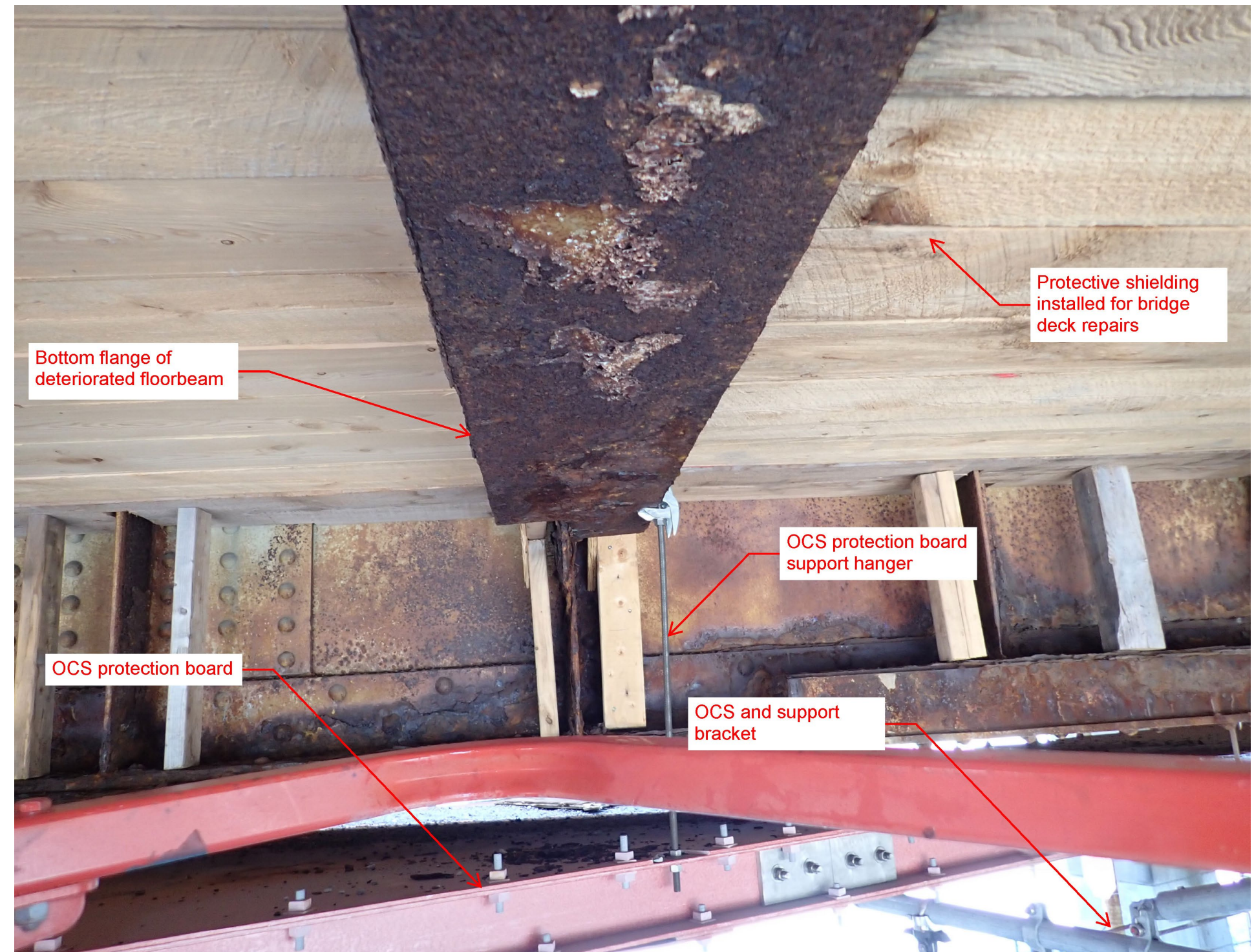
Project Overview

- Squires Bridge must undergo construction to complete critical beam end repairs.
- Work on the bridge will include preventative actions to maintain safe use of the bridge.
- Construction will take place 24/7 during the project.



Need for Union Square Service Impacts

- Green Line's Overhead Catenary System (OCS) runs under Squires Bridge and provides power to the Green Line trains.
- OCS and related elements interfere with access to the project area.
- OCS to be temporarily removed and relocated.
- The project will install shoring towers that will be used to support the affected beams throughout repairs.
- The shoring towers will be placed within the track area.



Project Scope

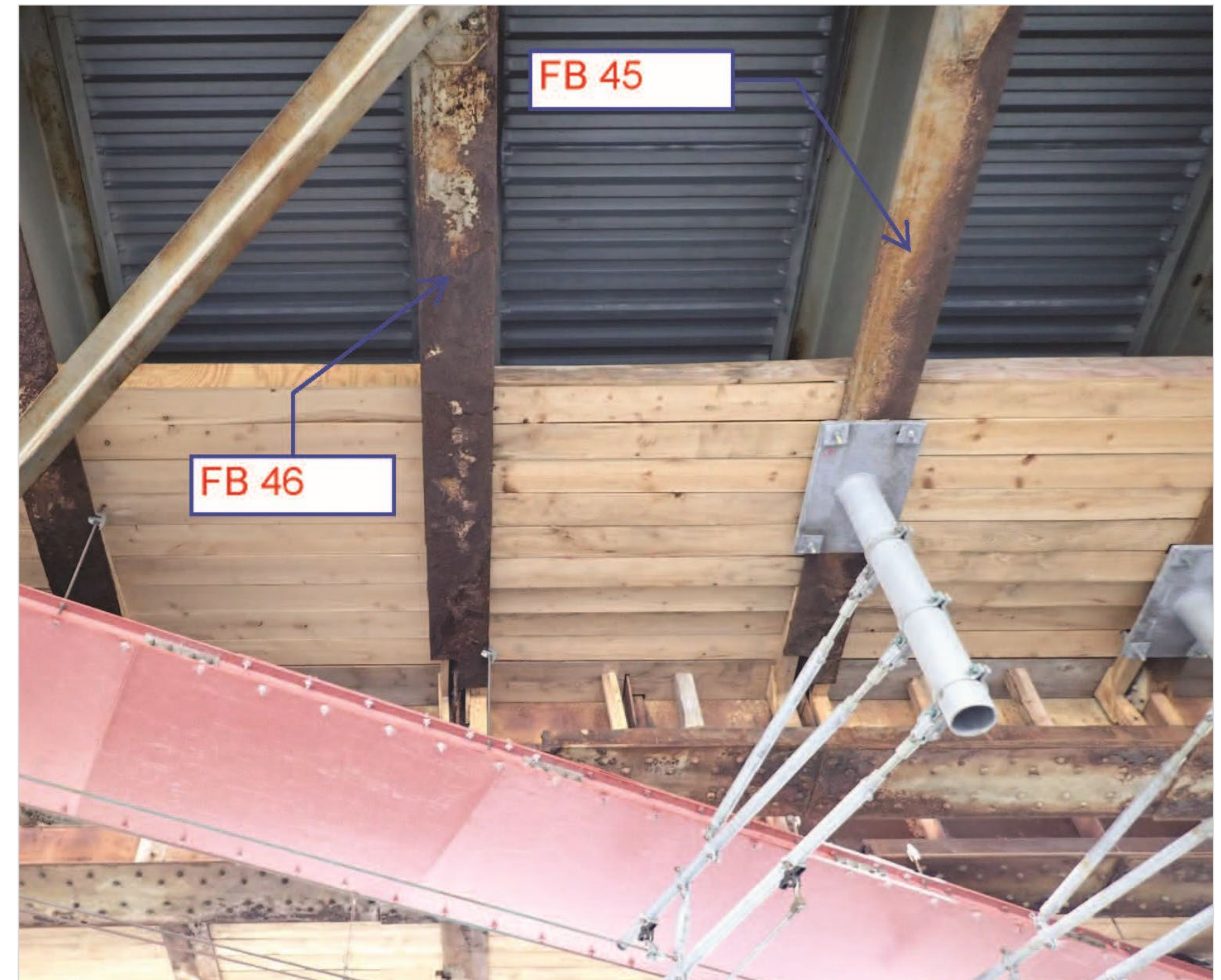
- De-energize Overhead Catenary System (OCS) and mobilize hi-rail equipment.
- Temporarily remove/relocate OCS and remove protection board.
- Install track protection.
- Install shoring towers.
- Remove overhead shielding and disassemble existing structural steel connections.
- Install containment measures.
- Complete surface preparation of existing structural steel and apply paint coat.



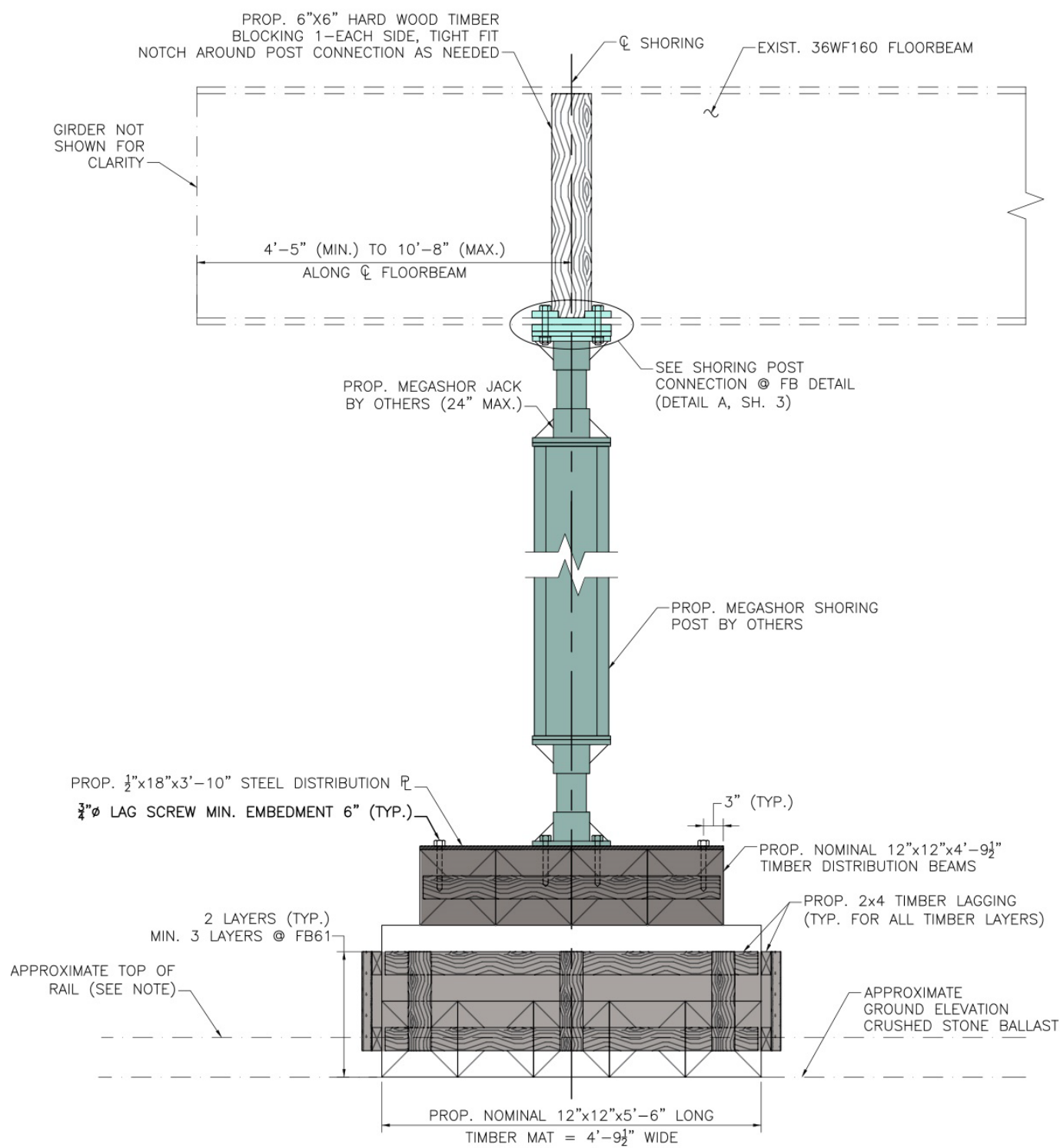
Overhead Catenary System (OCS)

Project Scope (cont.)

- Remove containment measures.
- Fit up and install bolted repair plates and angles.
- Remove shoring towers.
- Remove track protection.
- Reinstall OCS and protection board.
- Clear site and re-energize OCS, perform system testing and re-open.



Shoring Tower Elevation

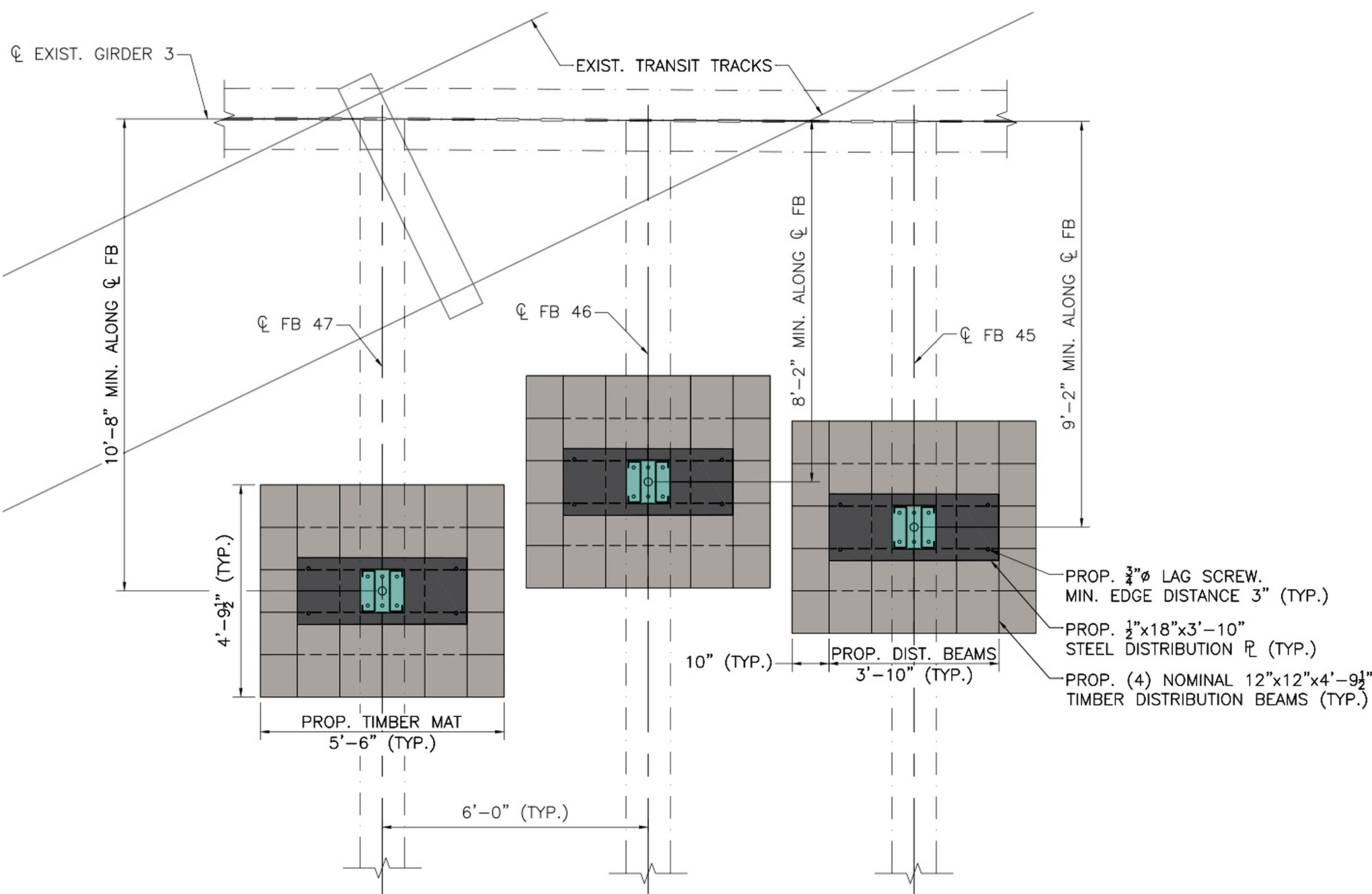


NOTE:
AT SOME LOCATIONS RAIL OR MBTA PROPERTY INTERFERENCE MAY REQUIRE BASE LAYER OF MAT TO BE CUT TO FIT AROUND OBSTRUCTIONS. IF MORE THAN 12" OF MAT IS REQUIRED TO BE REMOVED CONTACT THE DESIGN ENGINEER.

TYPICAL SHORING ELEVATION

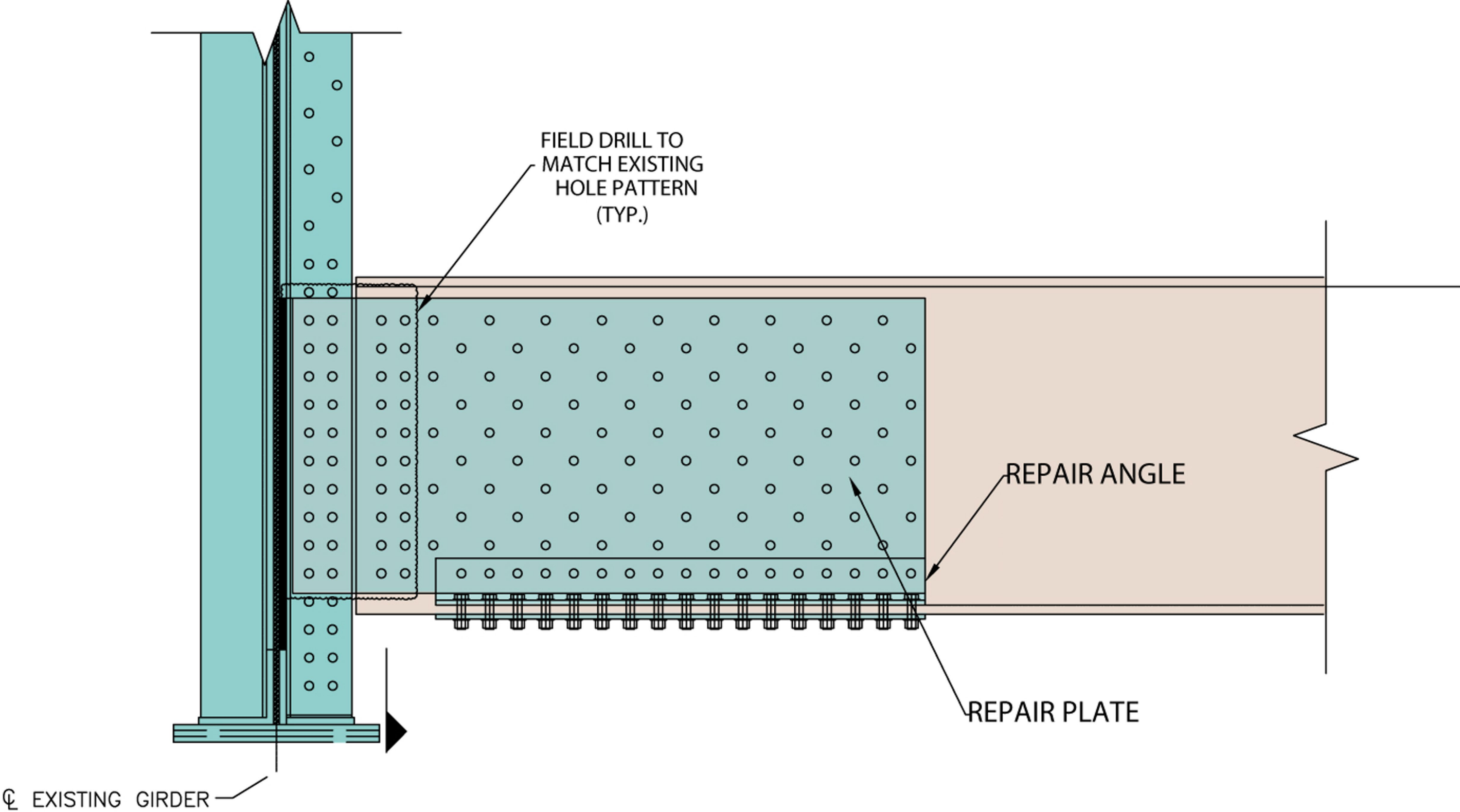
SCALE: 1" = 1'-0"

Shoring Tower – Typical Plan View

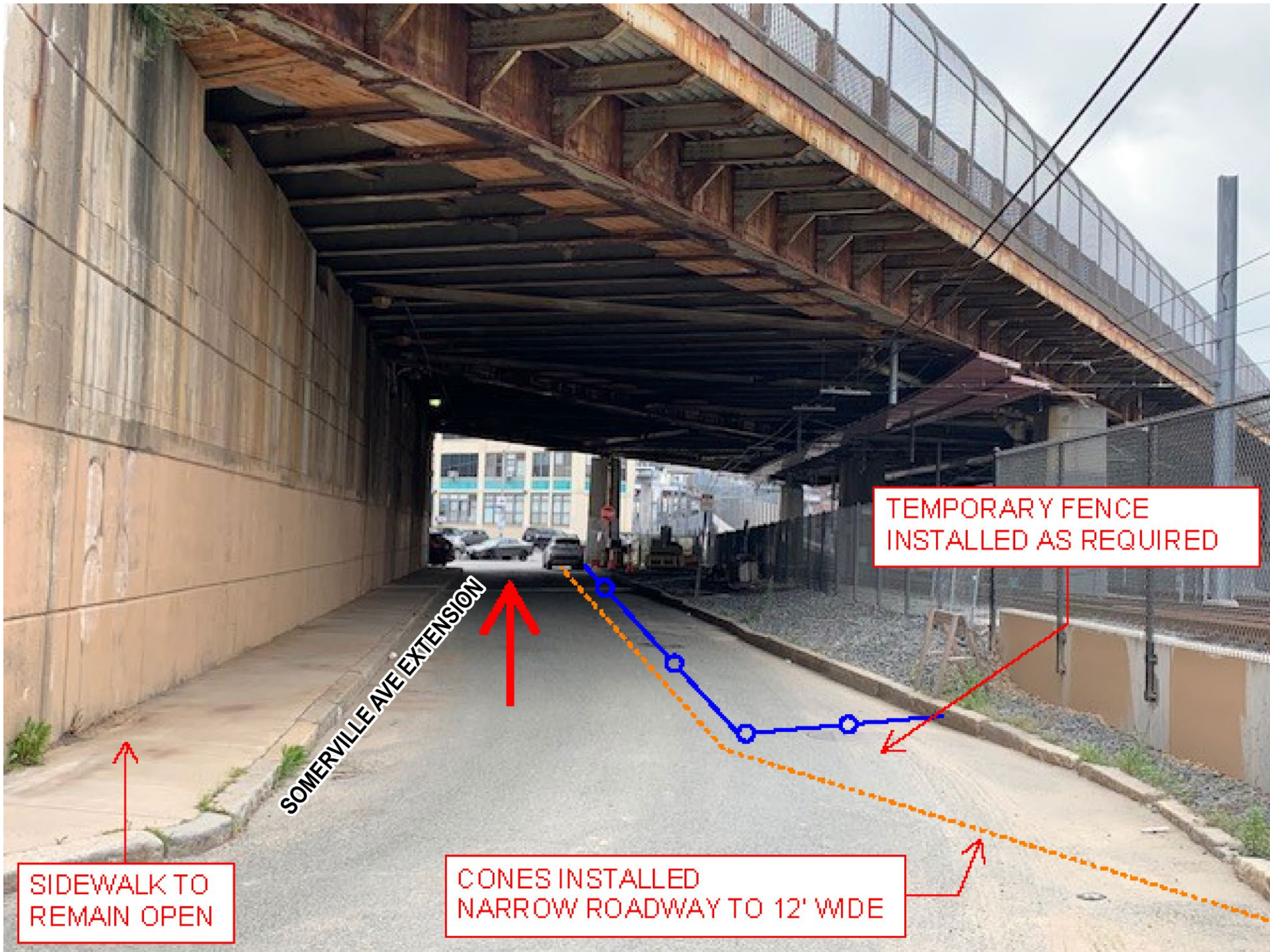


PLAN @ FLOORBEAM 45-47

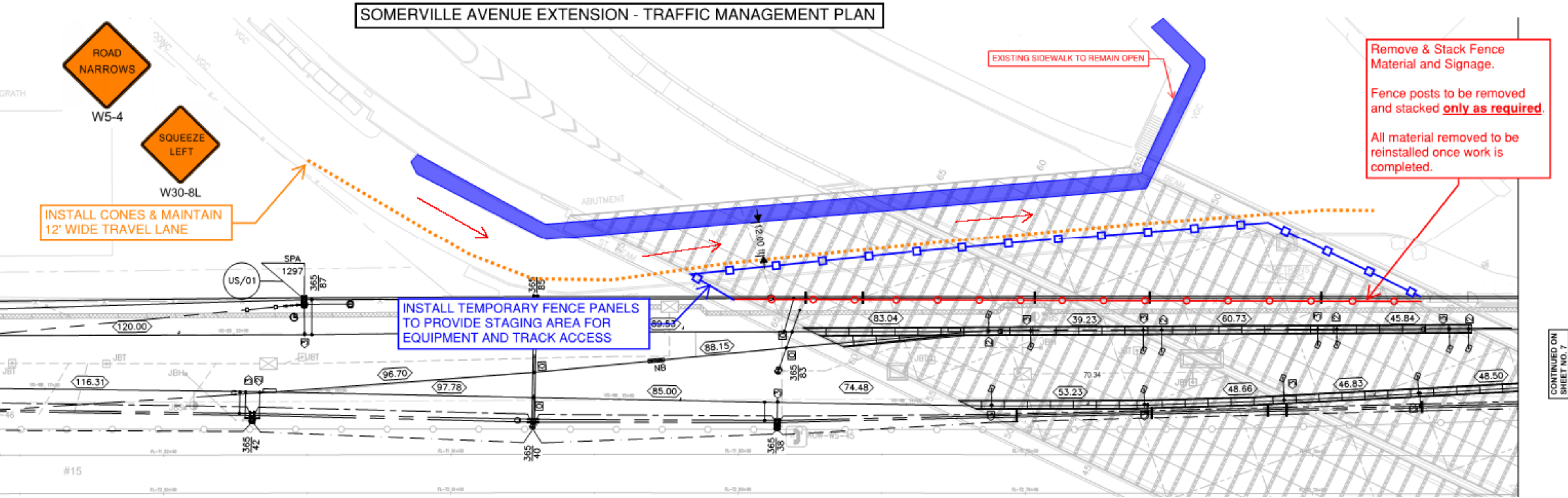
Beam Repairs

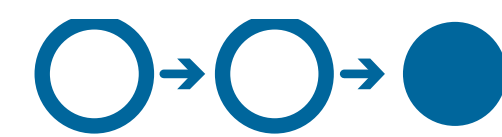


Access to Work Site



Traffic Management for Vehicles and Pedestrians



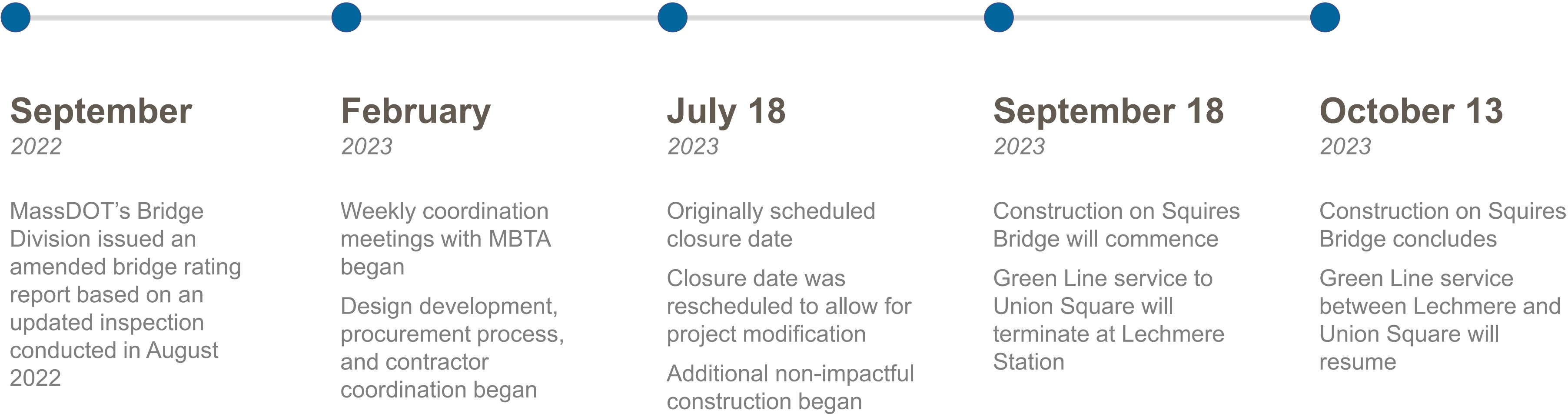


Project Timeline

Project Timeline Modifications

- MassDOT postponed the original start date of July 18 to continue coordinating with the MBTA.
- The construction schedule was reduced from 42 days to 25 days.
- The shorter timeline was achieved by:
 - Changing the project scope to minimize impacts to travel while still allowing necessary repairs to be completed;
 - Providing additional construction crews; and
 - Completing some of the scheduled work while the project area remained open.

Squires Bridge Construction Timeline



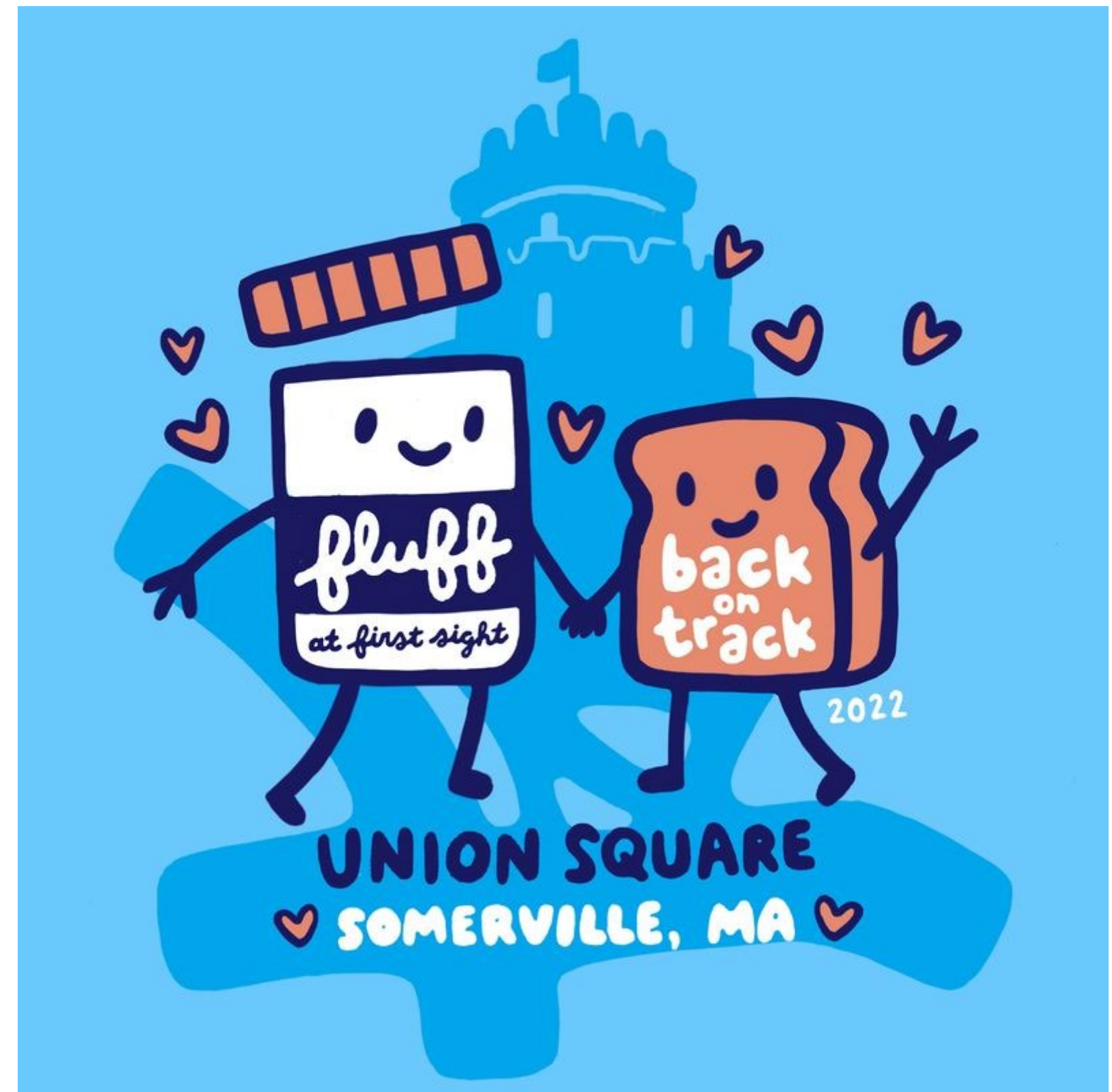
Impacts to Travel

- Green Line service to Union Square will terminate at Lechmere Station during the project.
- Green Line service to Medford/Tufts, Fitchburg Line Commuter Rail service, and motor vehicle traffic will not be impacted during construction.
- During the suspension of service, **ADA vans** will be available on an on-call basis for those in need of accommodations between Lechmere Station and Union Square Station.



Fluff Festival Shuttles

- MassDOT has secured three (3) shuttle buses to run on the day of the **Fluff Festival (9/23)**.
- Shuttles will run between East Somerville Station and Union Square Station at 10–15-minute headways.
- Shuttles will run between 2:30 p.m. and 7:30 p.m.





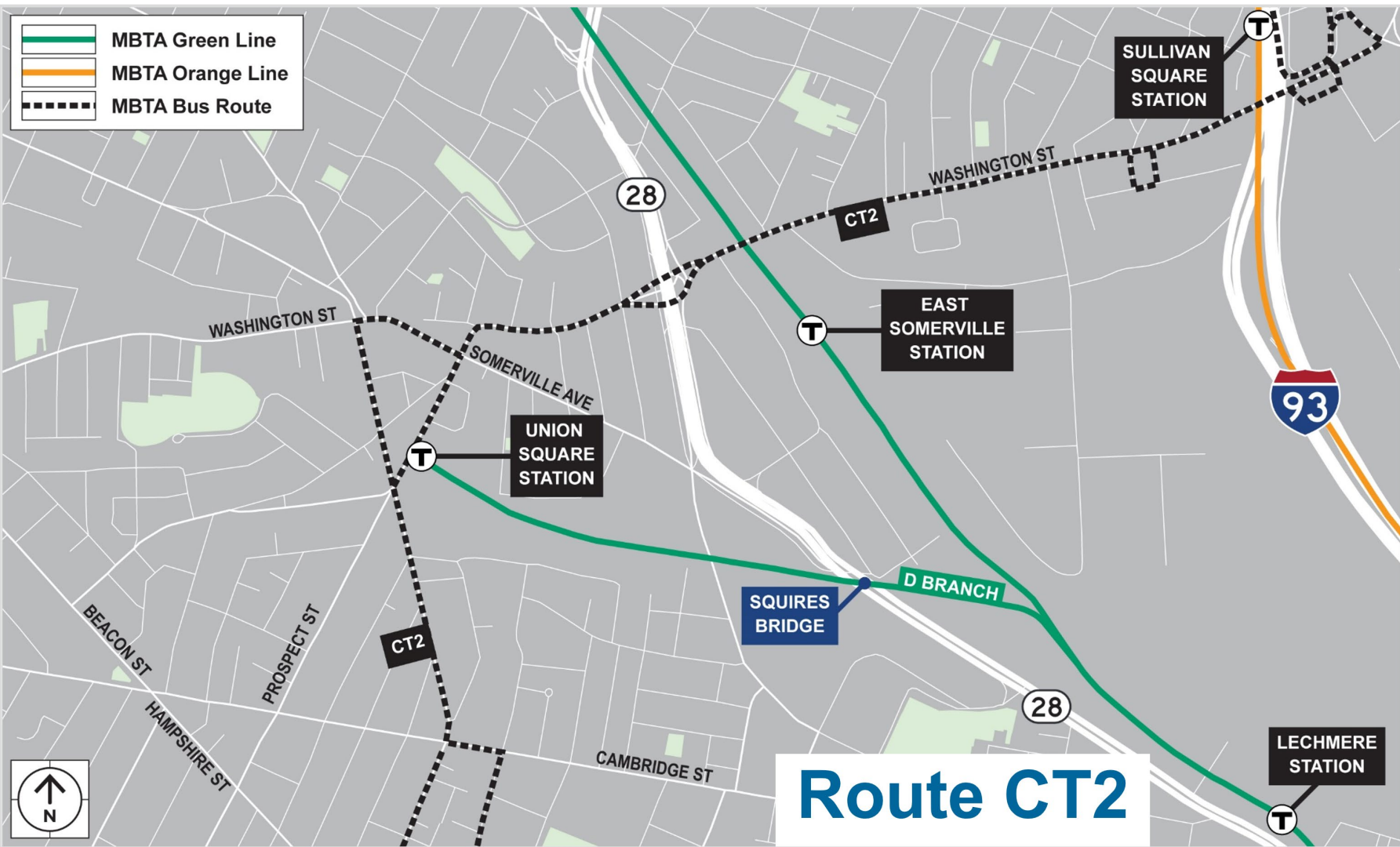
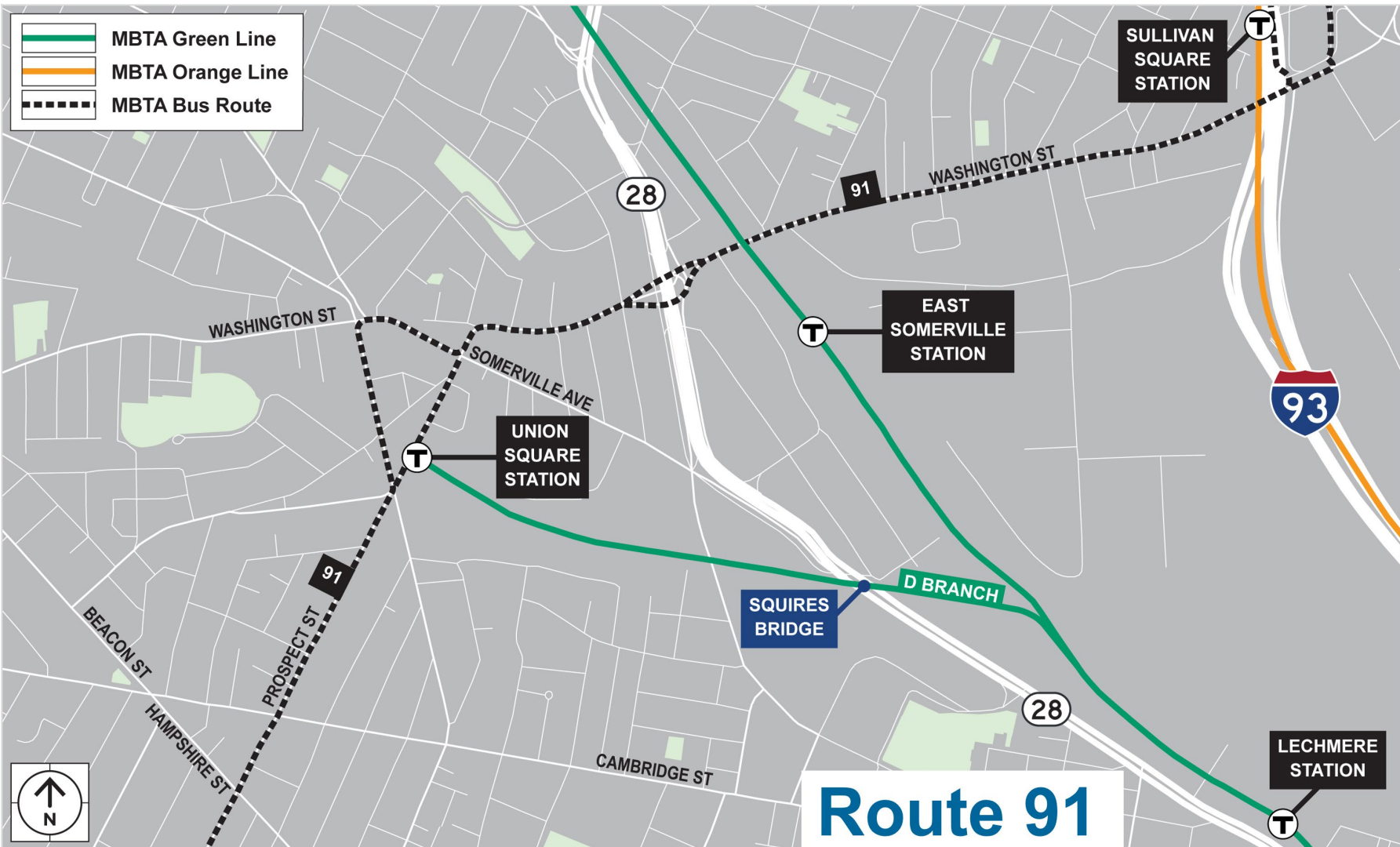
Travel Alternatives

Transit Alternatives

- Alternate travel options include the following:
 - Riders headed from Union Square Station can instead utilize Route 86 (boarding at Somerville Ave. opp Stone Ave. and alighting at Washington St. at New Washington St.) and Route 91 (boarding at Prospect St. at Bennett Ct. and alighting at Washington St. at New Washington St.) bus service from the Union Square to East Somerville Station areas for continued service on the Medford/Tufts branch.
 - Riders headed to Union Square Station can instead board Medford/Tufts Branch service to East Somerville Station and then utilize Routes 86 and 91 bus service (boarding at Washington St. at Tufts St. and alighting at Somerville Ave. at Stone Ave.) to the Union Square area.
 - Riders may also utilize Route 87 bus service by boarding at Lechmere Station and alighting in the Union Square area at Somerville Ave. at Stone Ave.
- MBTA users are encouraged to sign up for MBTA Alerts or visit [mbta.com/alerts](https://www.mbta.com/alerts).

Alternatives Methods of Transit: Medford Branch

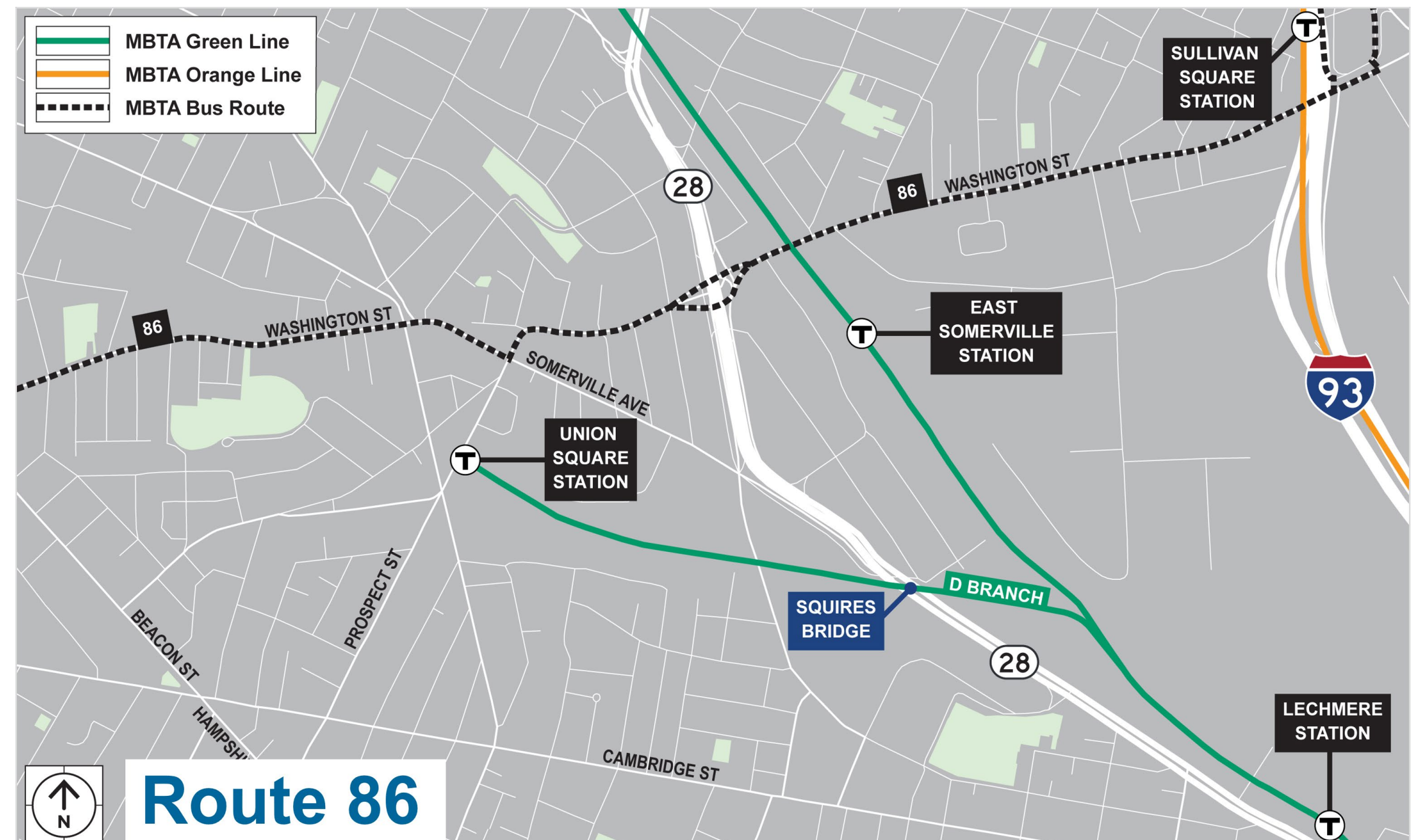
- Riders on the Green Line can take Bus Routes 86, 91, and CT2 to travel between Union Square Station and East Somerville Station on the Medford Branch.



Medford Branch: Bus Route 86

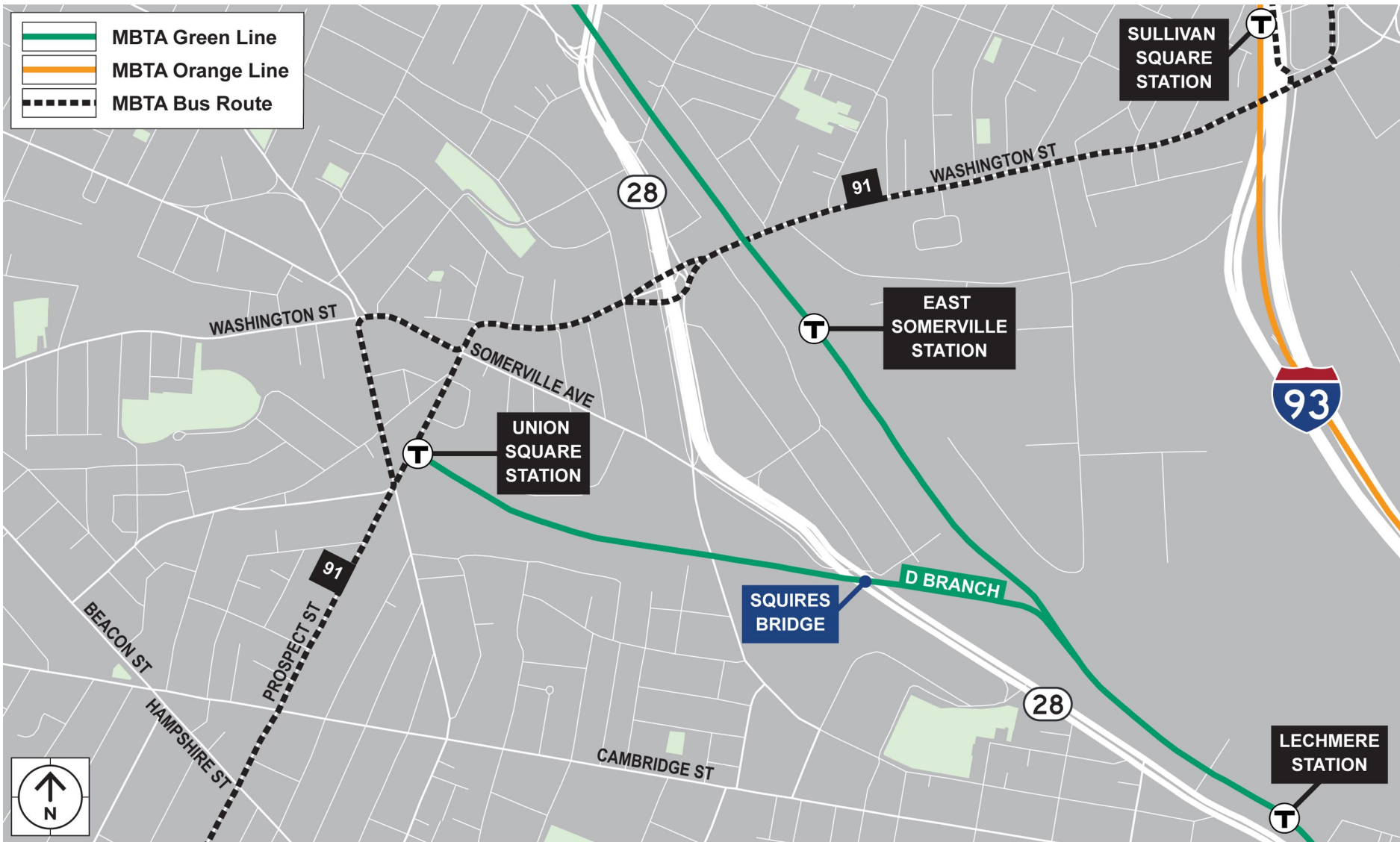
Alternative Methods of Transit

- Riders on the Green Line can take Bus Routes 86, 91, and CT2 to travel between Union Square Station and East Somerville Station on the Medford Branch.

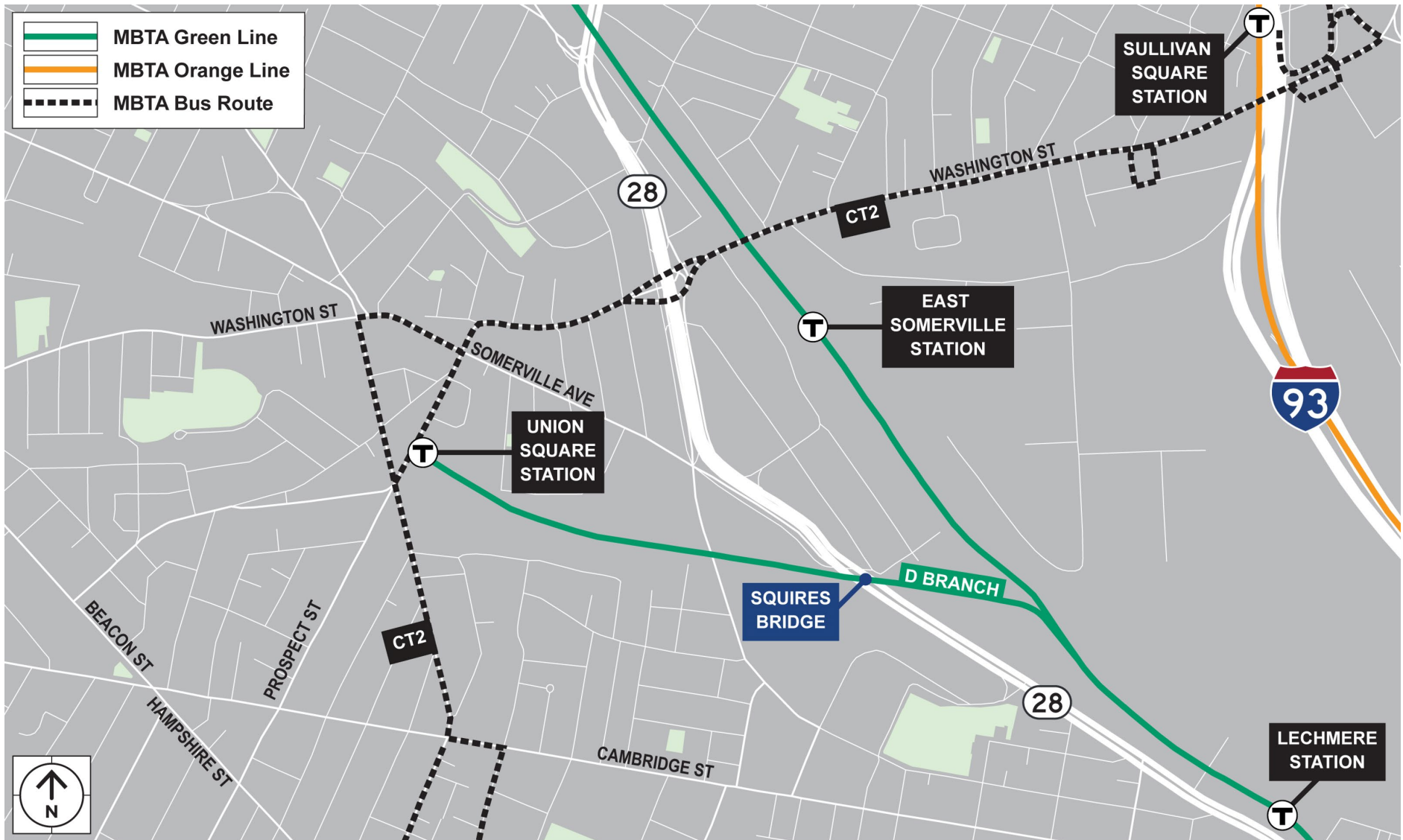


Medford Branch: Bus Routes 91 and CT2

Alternative Methods of Transit



Route 91



Route CT2

Alternatives Methods of Transit: Bus Route 87

- Bus Route 87 travels between Lechmere Station and Union Square Station.



Alternatives Methods of Transit: Orange Line

- Bus Routes 86, 91, and CT2 travel to travel between the Union Square area and Sullivan Square Station on the Orange Line.



Alternatives Methods of Transit: Red Line

- Bus Routes 69, 85, 86, 88, and 91 travel to travel between the Union Square area and Red Line Stations such as Davis, Harvard, Central, and Kendall.



Route 91

Red Line: Bus Routes 85 and 88

Alternative Methods of Transit



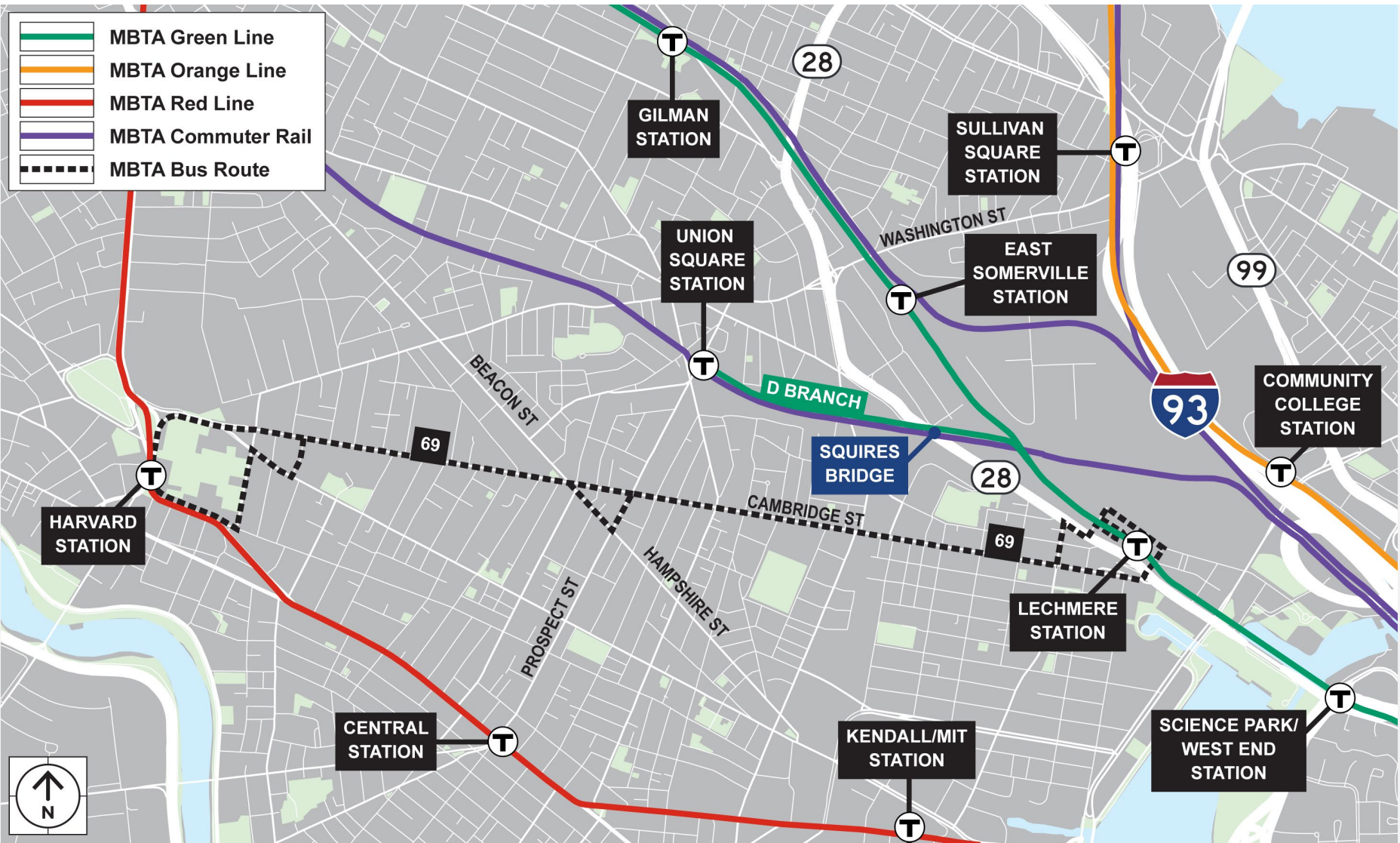
Route 85



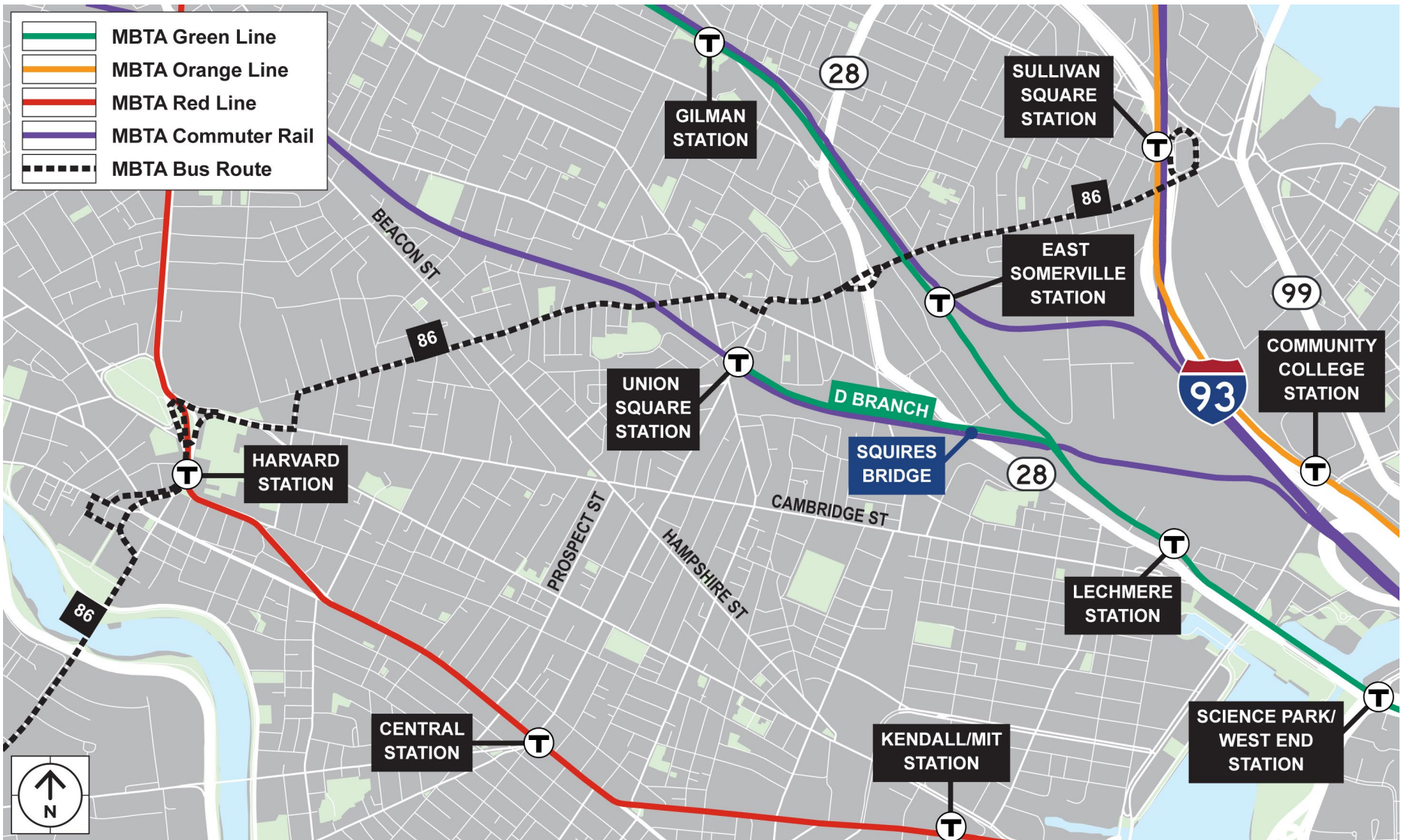
Route 88

Red Line Connected to Harvard: Bus Routes 69 and 89

Alternative Methods of Transit



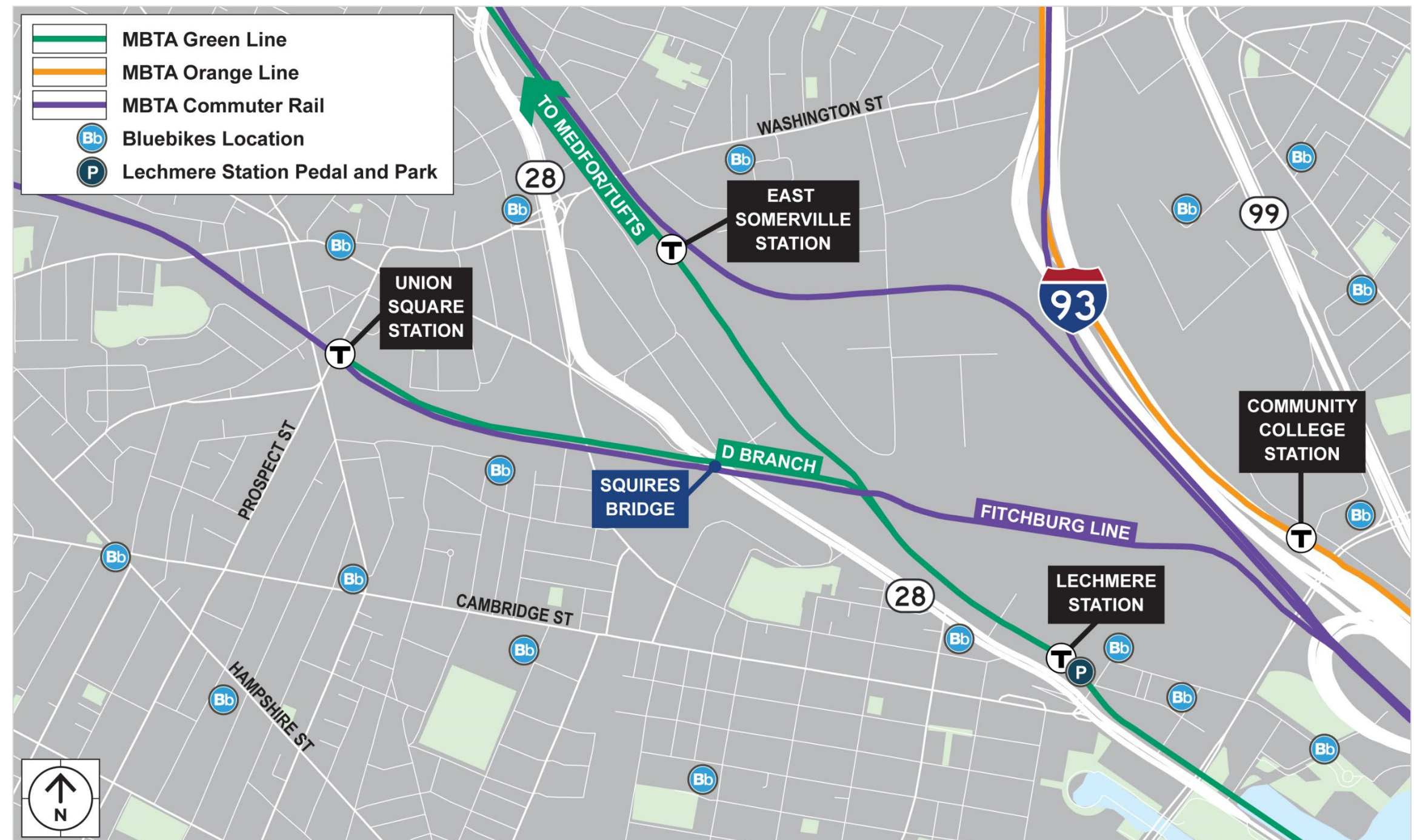
Route 69



Route 86

Alternatives Methods of Transit: Biking

- Blue Bike stations are located at Union Square Station, Lechmere Station, and throughout nearby neighborhoods.
- Lechmere Station has a Pedal and Park.





Community Engagement

Public Outreach

- Continuous outreach to local elected officials, stakeholder groups, and local partners.
- A virtual legislative briefing was held on 9/6.
- The meeting was advertised on MassDOT's website and social media.
- The meeting was advertised in the Somerville Times (9/6) and Boston Globe (9/4).
- A project hotline number has been created to respond to project related questions.
- Pop-ups were conducted at various locations near the impacted stations with high volumes of commuter traffic.
- MBTA service alerts will be active throughout the project.
- MBTA stations are providing in-station signage and public announcements.

Project Contact Information

For updates about service changes:

Visit mbta.com/alerts

Follow the MBTA on social media

 MBTA customer service: **(617) 222-3200**

To ask questions and share comments with the project team:

 Call the project hotline: **(617) 927-9957**

 Email the project team: daniel.fielding@dot.state.ma.us



Questions and Discussion

Q&A Etiquette

In Person



- Raise your hand to be called on for verbal questions



- Please state your name and connection to the project before your question



- Please share only 1 question or comment at a time, limited to 2 minutes, to allow others to participate

Virtual



- “Raise your hand” to be unmuted for verbal questions (Alt + Y)



- Submit your questions and comments using the Q&A button (Alt + H)



- Please state your name and connection to the project before your question



- Please share only 1 question or comment at a time, limited to 2 minutes, to allow others to participate



- To ask a question via phone, dial *9 and the moderator will call out the last 4-digits of your phone number and unmute your audio when it is your turn



Thank You

Squires Bridge Construction Project

Somerville Public Library (Central)
September 12, 2023 | 6:30 p.m.

Project File No. 608482