



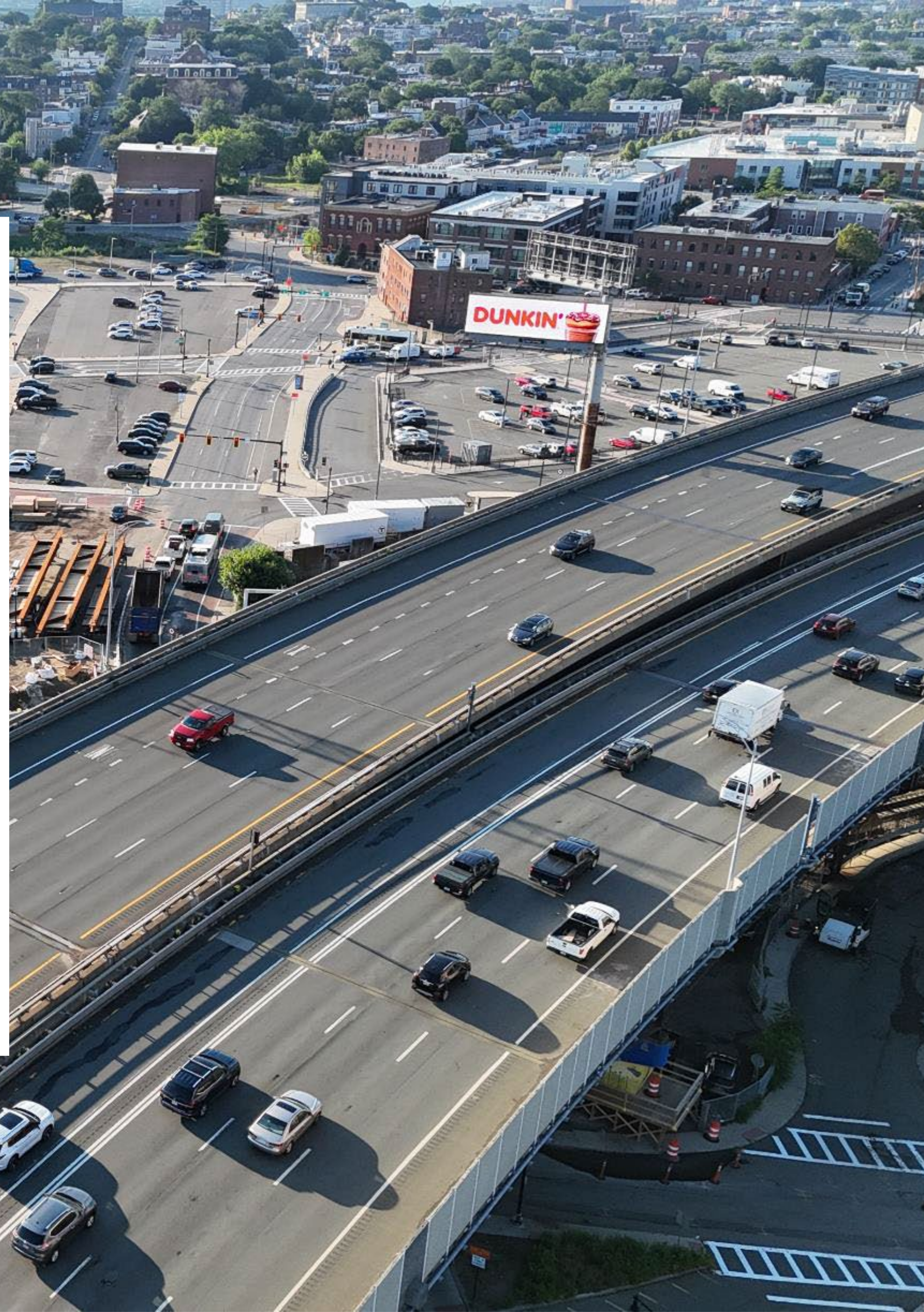
Maffa Way & Mystic Ave. Bridge Superstructure Replacements Project

*Bridge Nos. B-16-067 and
B-16-068=S-17-02*

February 24, 2025 | Schrafft's City Center, Charlestown

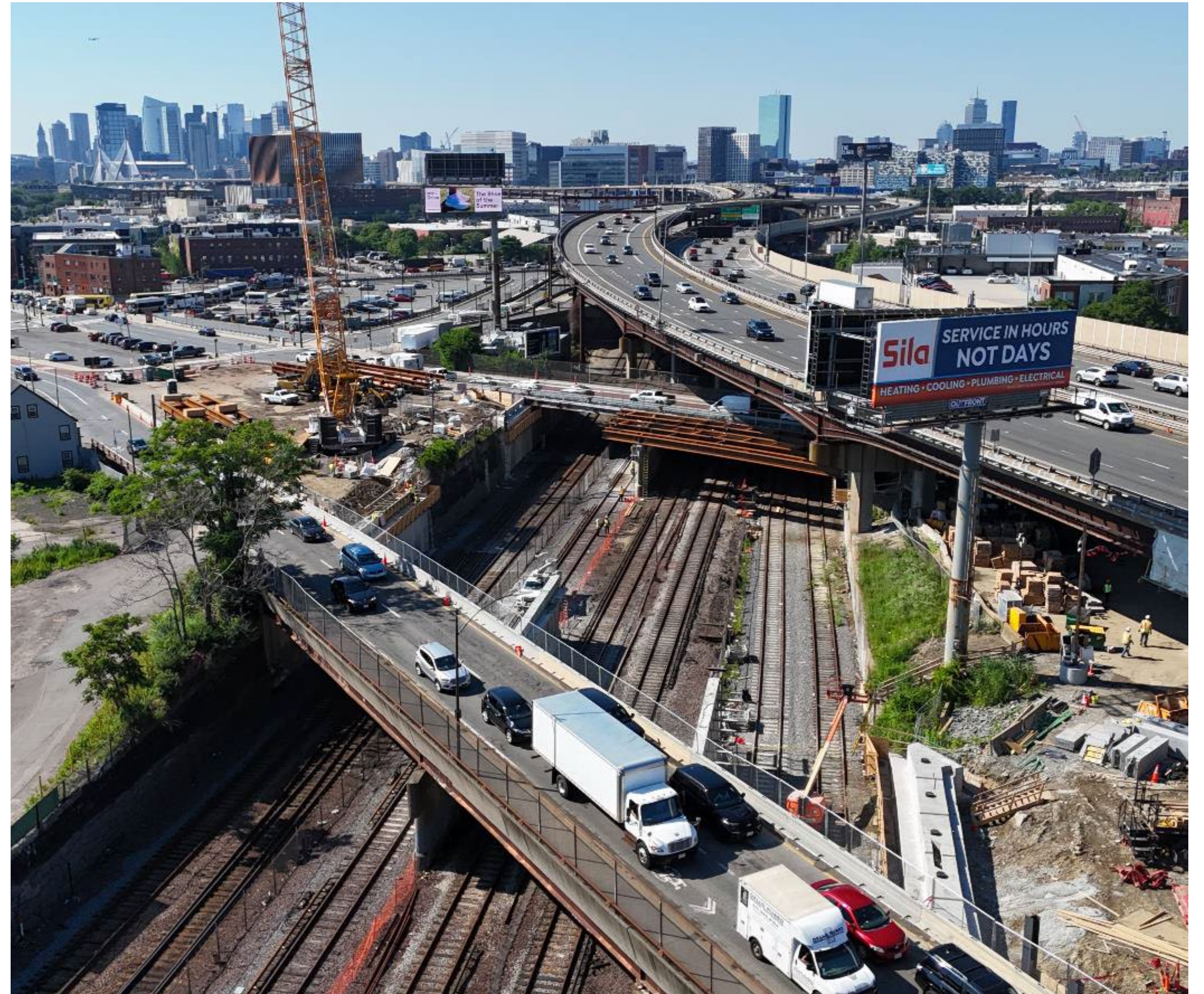
February 26, 2025 | Somerville Public Library

Project File No. 607670 – Contract No. 119537



Agenda

- 1 Welcome and Overview
- 2 Construction Progress To Date
- 3 Phase 2 Construction Overview
- 4 MBTA Shutdowns
- 5 Lombardi Street Improvements
- 6 Questions & Discussion



Project Team:

- **MassDOT**

- Theodore Boyle – MassDOT Design-Build Project Manager
- Mauricia Yeb – District 6 Assistant Construction Engineer
- Kevin Laramée – District 6 Area Engineer
- Simao Monteiro – District 6 Resident Engineer
- Dan Fielding – Legislative Affairs

- **MBTA**

- Kathryn Zazzera – Deputy Director of ROW Diversion and Integration
- Rebecca Wolfson – Project Manager, Transit Priority Planning

- **Design Build Team**

- Skanska - Contractor**

- Rob Pine – Project Executive
 - Frank Salmon – Project Manager
 - Michael Scott – Project Engineer

- CHA - Design Engineer**

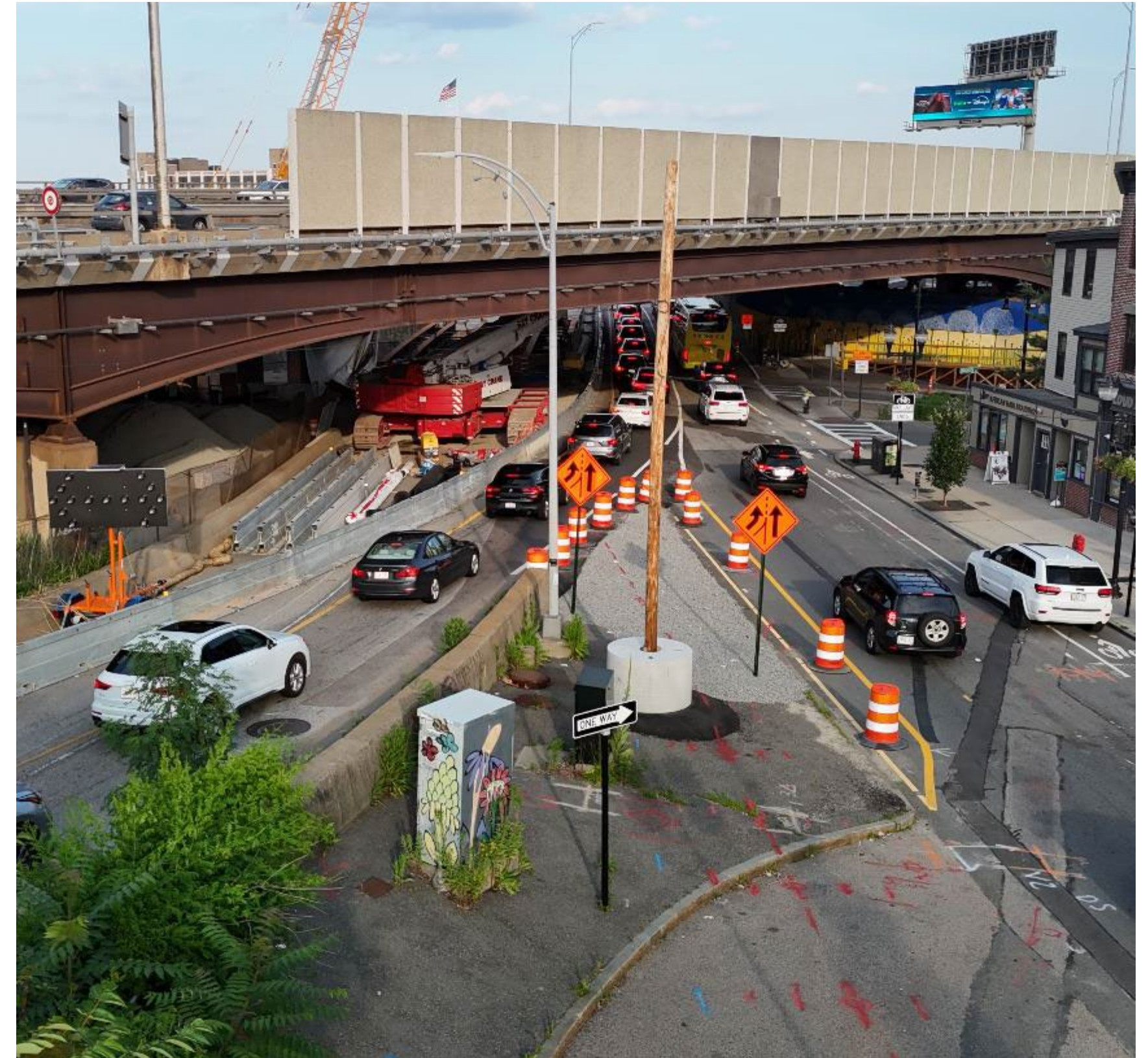
- Michael Sullivan – Design Project Manager
 - Andrew Valcovic – Highway Design Engineer

Language Interpreters

- **Spanish:**
Claudio Ruiz
- **Portuguese:**
Bertolt Candalice
- **Cantonese:**
Terry Yin

Project Overview

- Address Structural Deficiencies
 - Replace both bridge superstructures with new, code compliant and low-maintenance bridges
- Address Multimodal Accessibility
 - Maintain general purpose travel lanes on each bridge
 - Provide separate bicycle accommodations
 - Improve sidewalks
 - Maintain the existing bus lane on Maffa Way
 - Add new bus lane on Mystic Ave
 - Bicycle and Bus Transit Improvements on Lombardi Street
- Integrate with Future Projects
 - Rutherford Avenue improvements
 - Private developments
 - Assembly Square completion



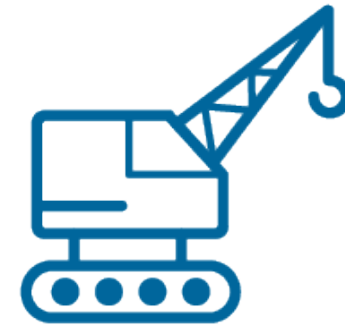
How is Construction Progressing?



Ongoing Public Outreach

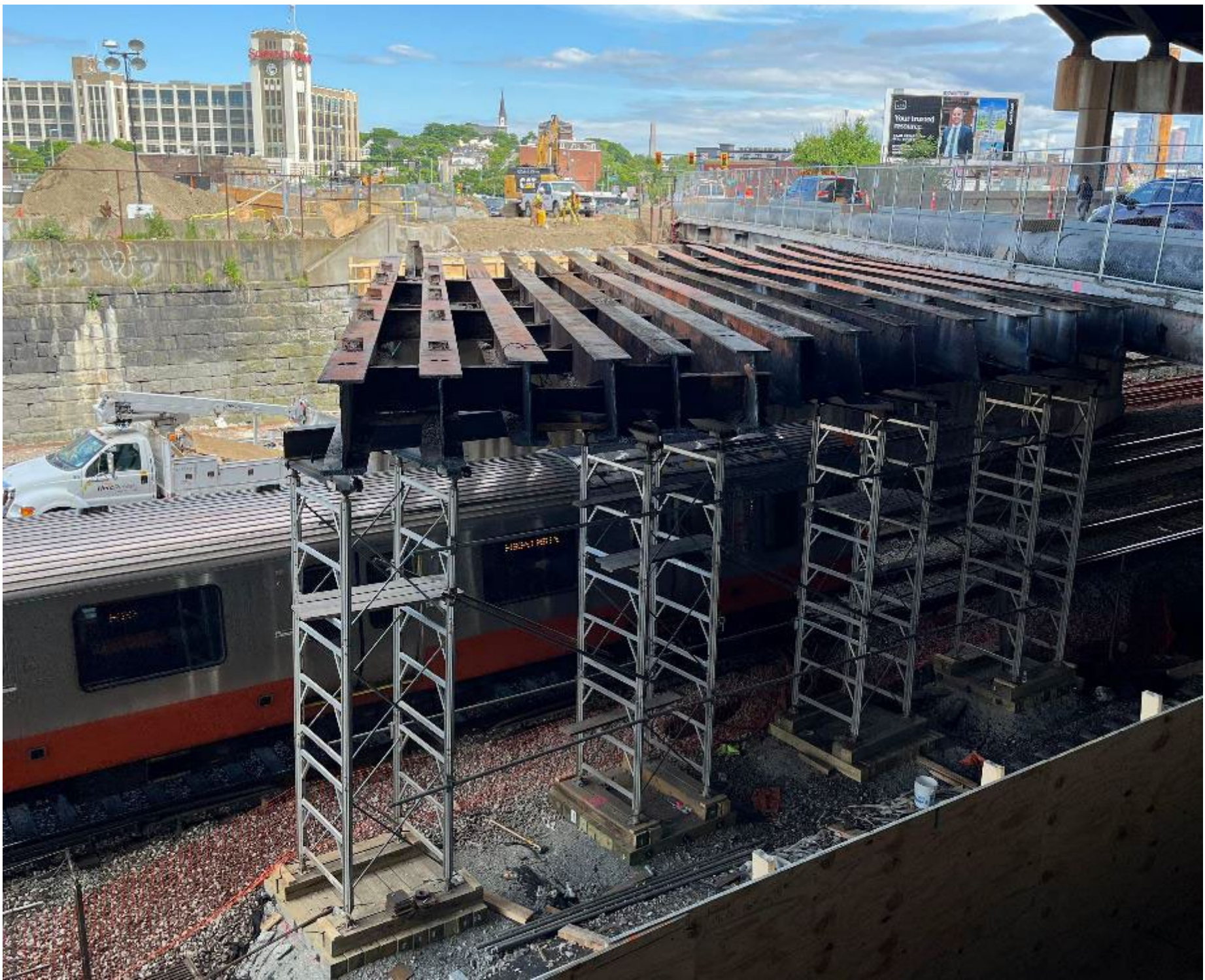
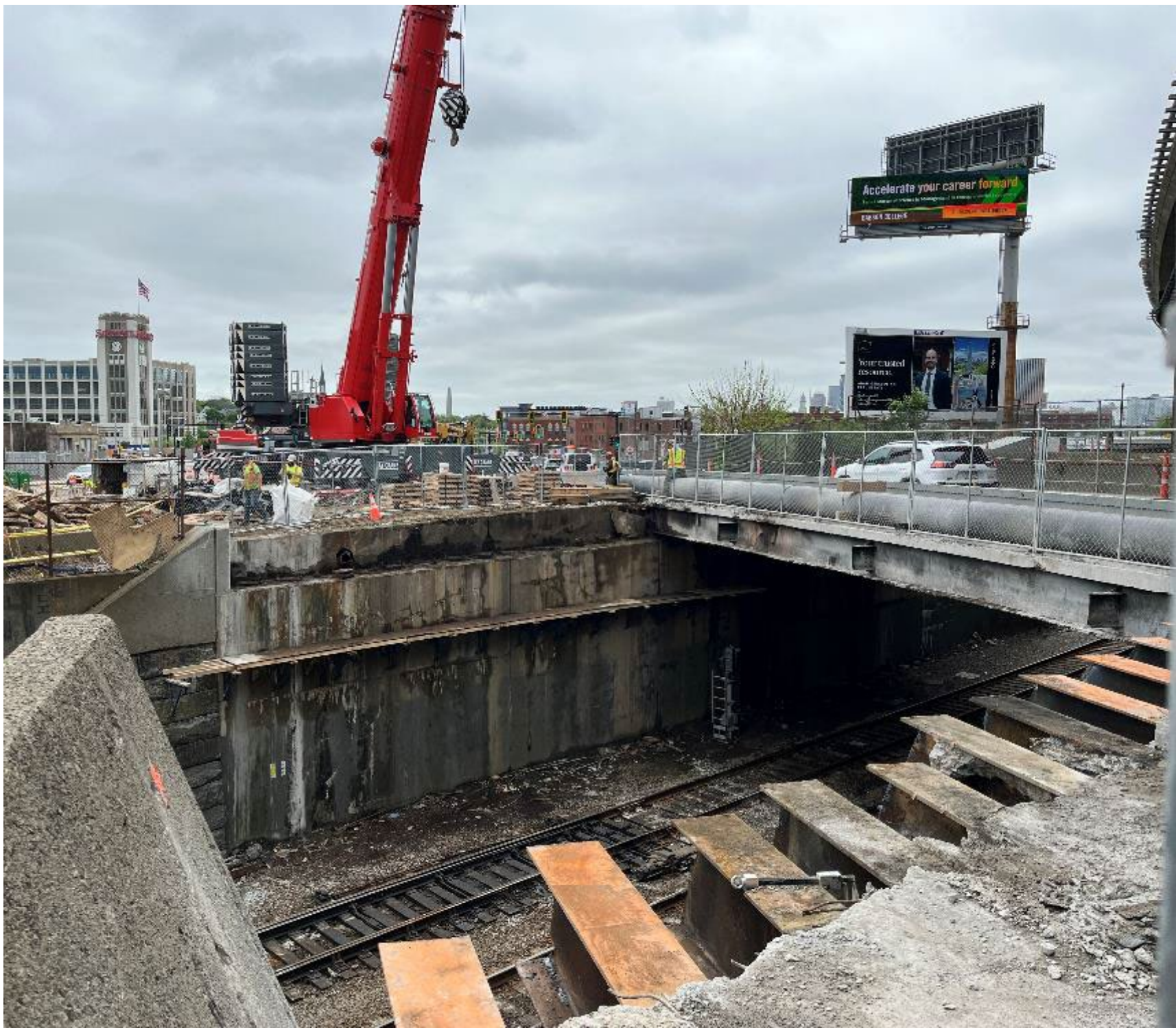
- Public Information Meetings
- Flyers in multiple languages distributed to local residences for Phase II detours
- Notice provided to local community organizations
- Meetings with local residents
- Notice posted on the project website
- E-blasts of important milestones
- Notice printed in the following newspapers:
 - El Mundo
 - The Brazilian Times
 - The Somerville Times
 - The Charlestown Patriot Bridge
 - Sampan



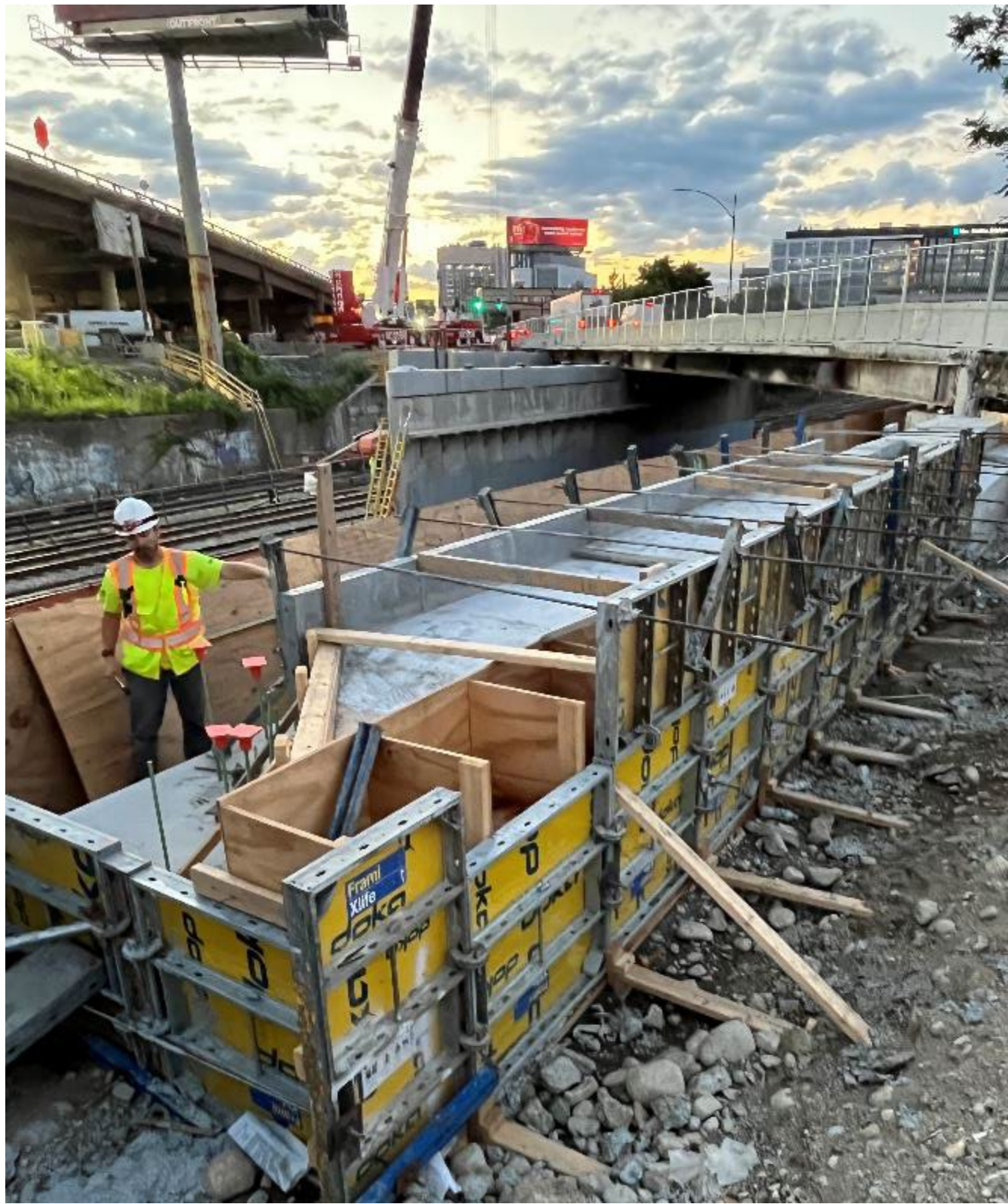
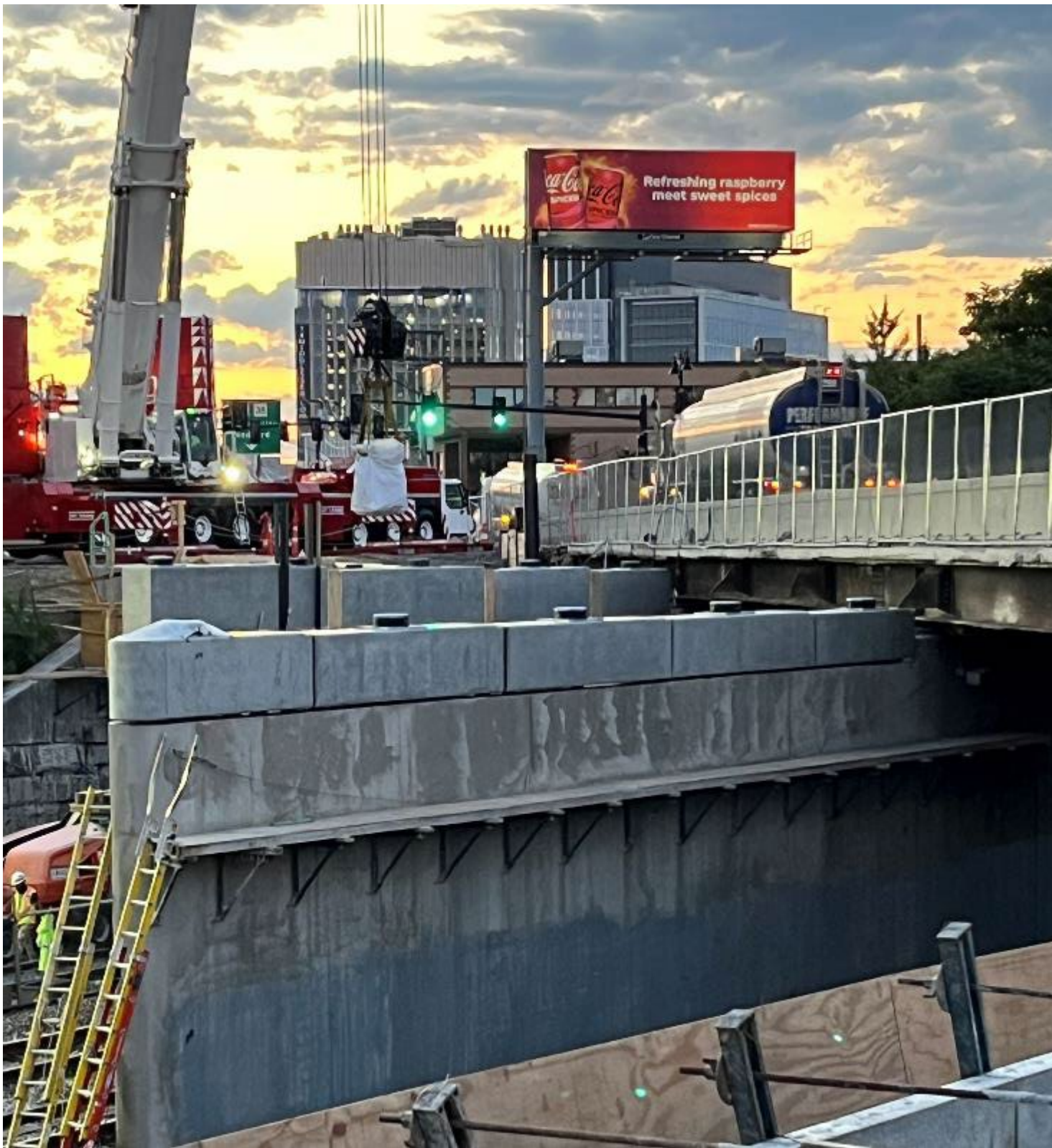


**Construction
Progress To
Date**

Phase I Construction – Demolition



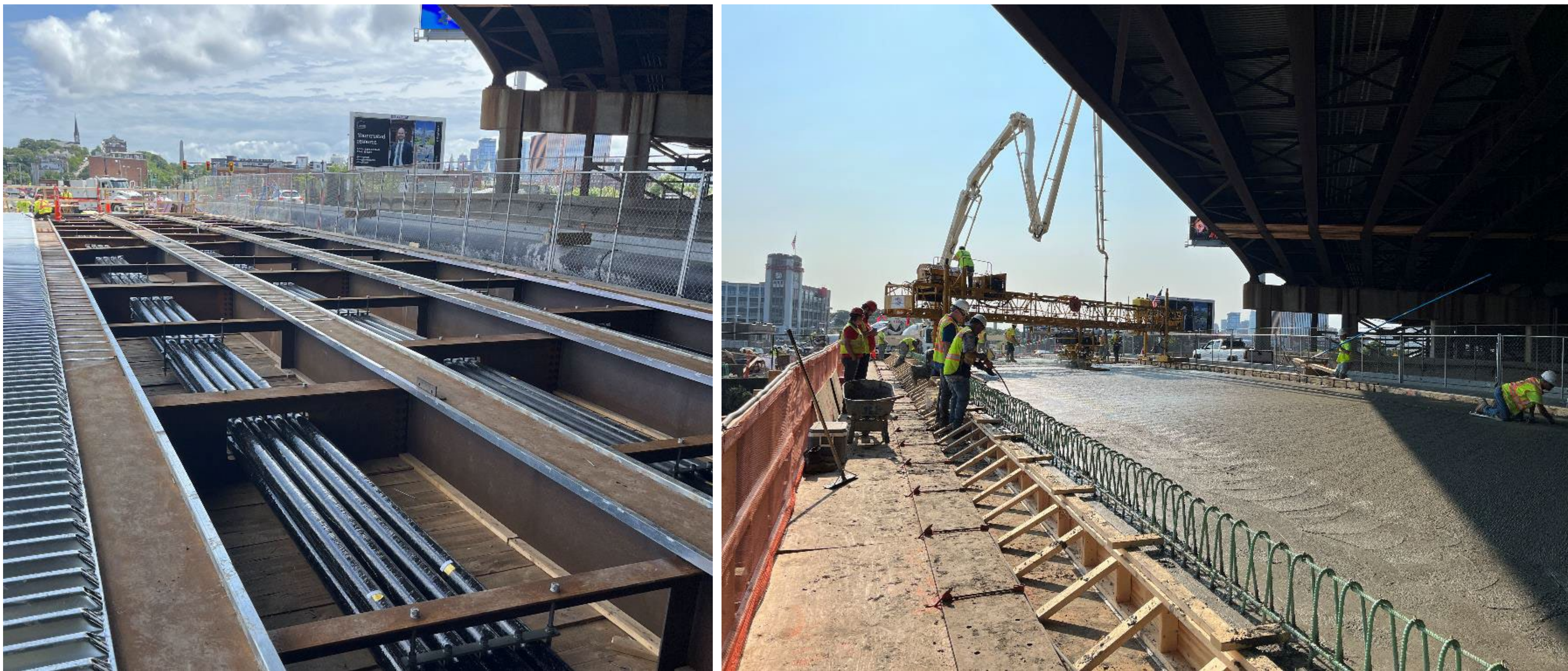
Phase I Construction – Substructure Repairs



Phase I Construction – Steel Erection



Phase I Construction – Deck Construction



Phase I Construction – Complete January 2025





Phase II Construction Overview

Phase 2 Construction



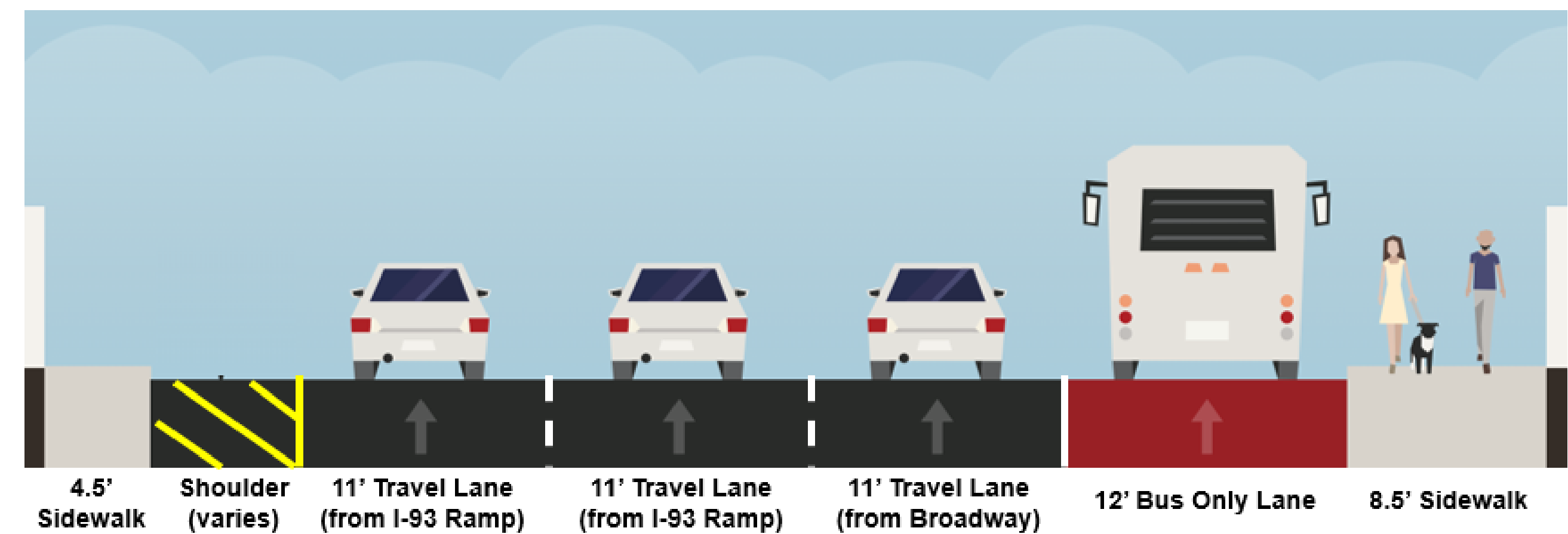
Approach:

- Replace south side of Maffa Way Bridge
- Replace north side of Mystic Ave Bridge
- Maintain 2 lanes of vehicular traffic and bike/pedestrian accommodations on each bridge
- Will also include Lombardi Improvements

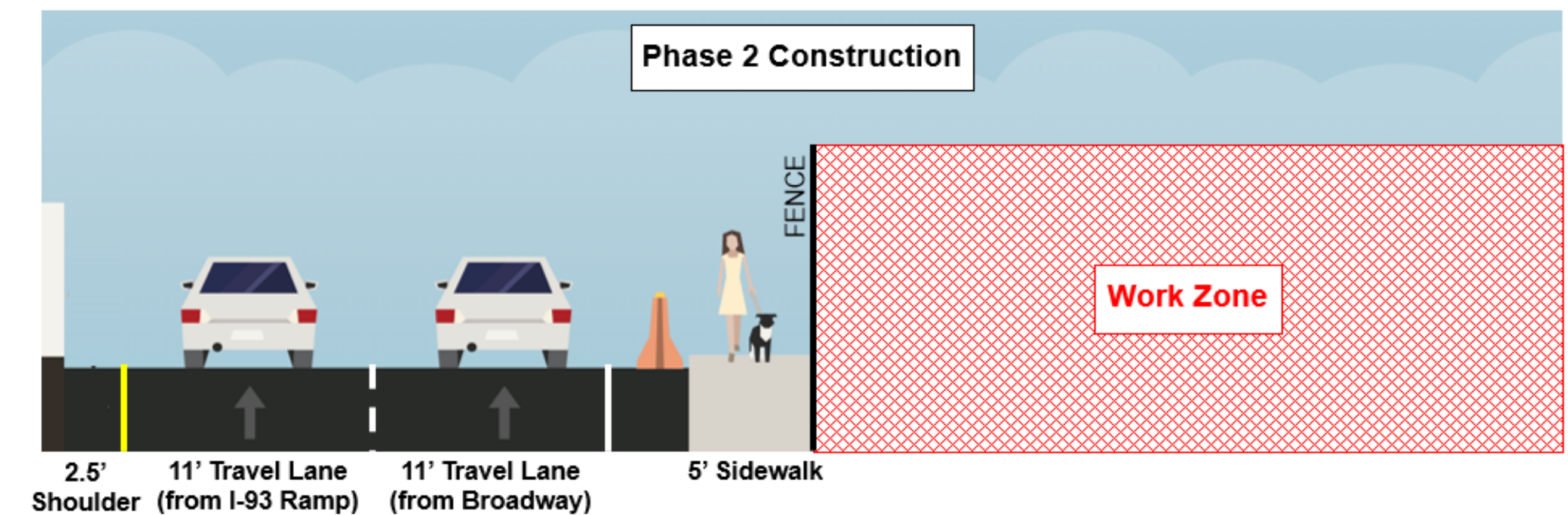
Schedule:

- Winter 2025 – Phase 2 construction begins
- May 2025 – Orange Line Shutdown #2 (9-day outage of MBTA Orange Line)
- Winter 2026 – Phase 2 construction complete

Maffa Way Bridge Original Condition (Between Caldwell Street and Sullivan Square T Station)

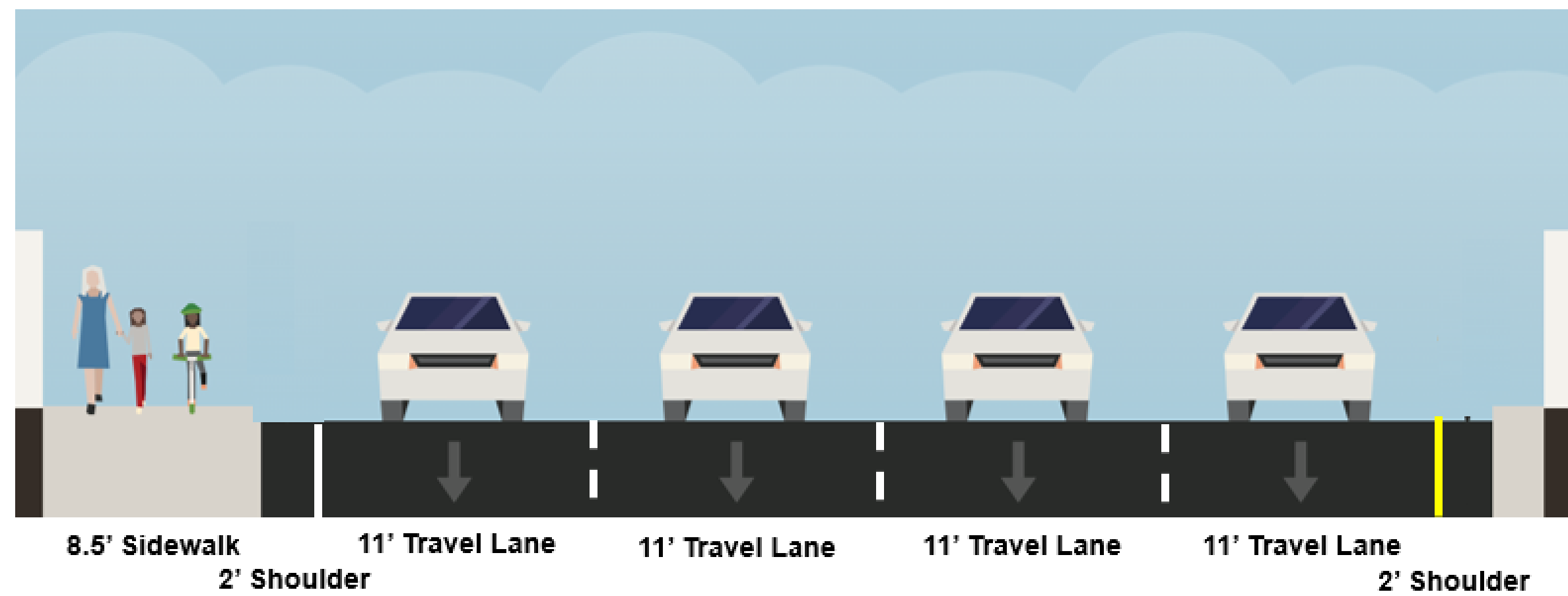


Maffa Way Bridge Phase 2 – Implemented Winter 2025

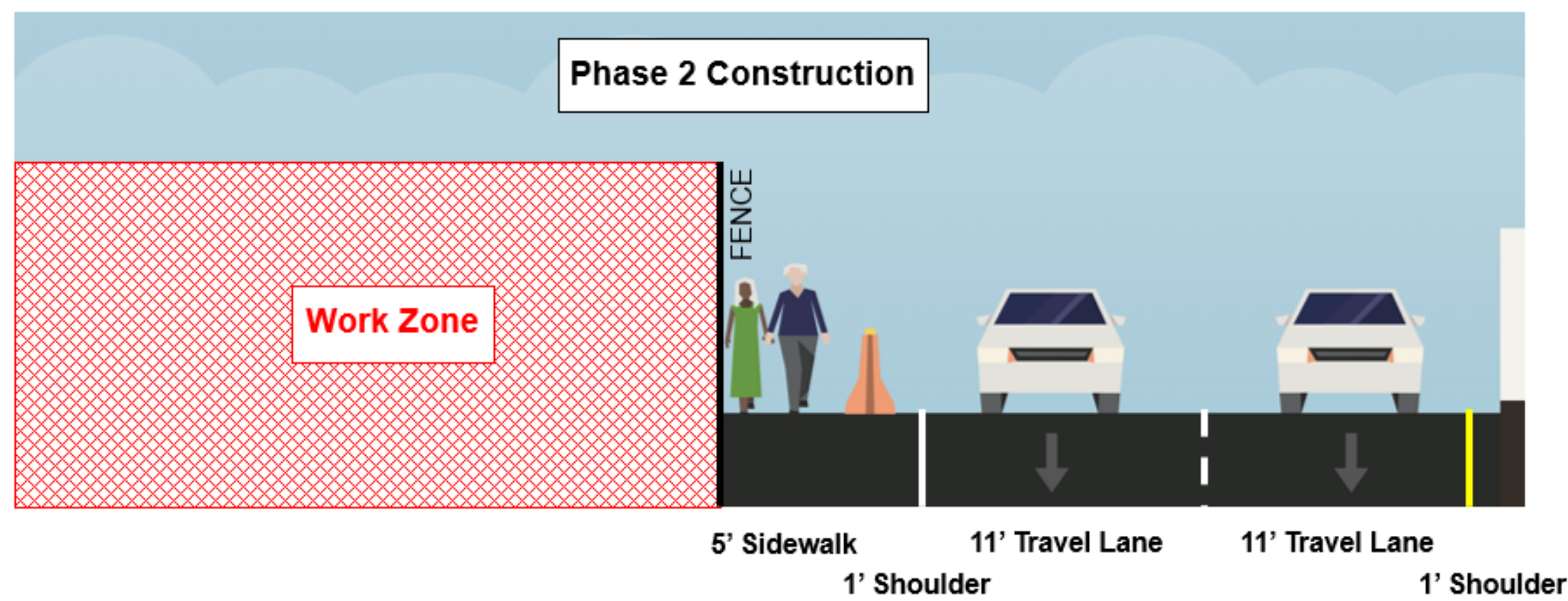


Mystic Ave Bridge Original Condition

(Between Dorrance Street and Assembly Square Drive)



Mystic Ave Bridge Phase 2 – Implemented Winter 2025



Ongoing Construction Mitigation

- Standard work hours w/ limited exceptions for certain activities
- Traffic Mitigation
- Additional Neighborhood Signage
- Noise Mitigation
- Dust Mitigation
- Pest Control
- Incentives/Disincentives to ensure compliance with contract timelines





MBTA Shutdowns

Coordination with MBTA Orange Line & Commuter Rail

- MassDOT and MBTA are coordinating to ensure efficiency across projects to limit service interruptions.
- Commuter Rail Line and Orange Line shutdown March 7th 8:30 PM through March 9th.
 - Shuttle buses will be provided
- Nine-day shutdown of Orange Line beginning May 9th 8:30 PM through May 18th.
 - Shuttle buses will be provided

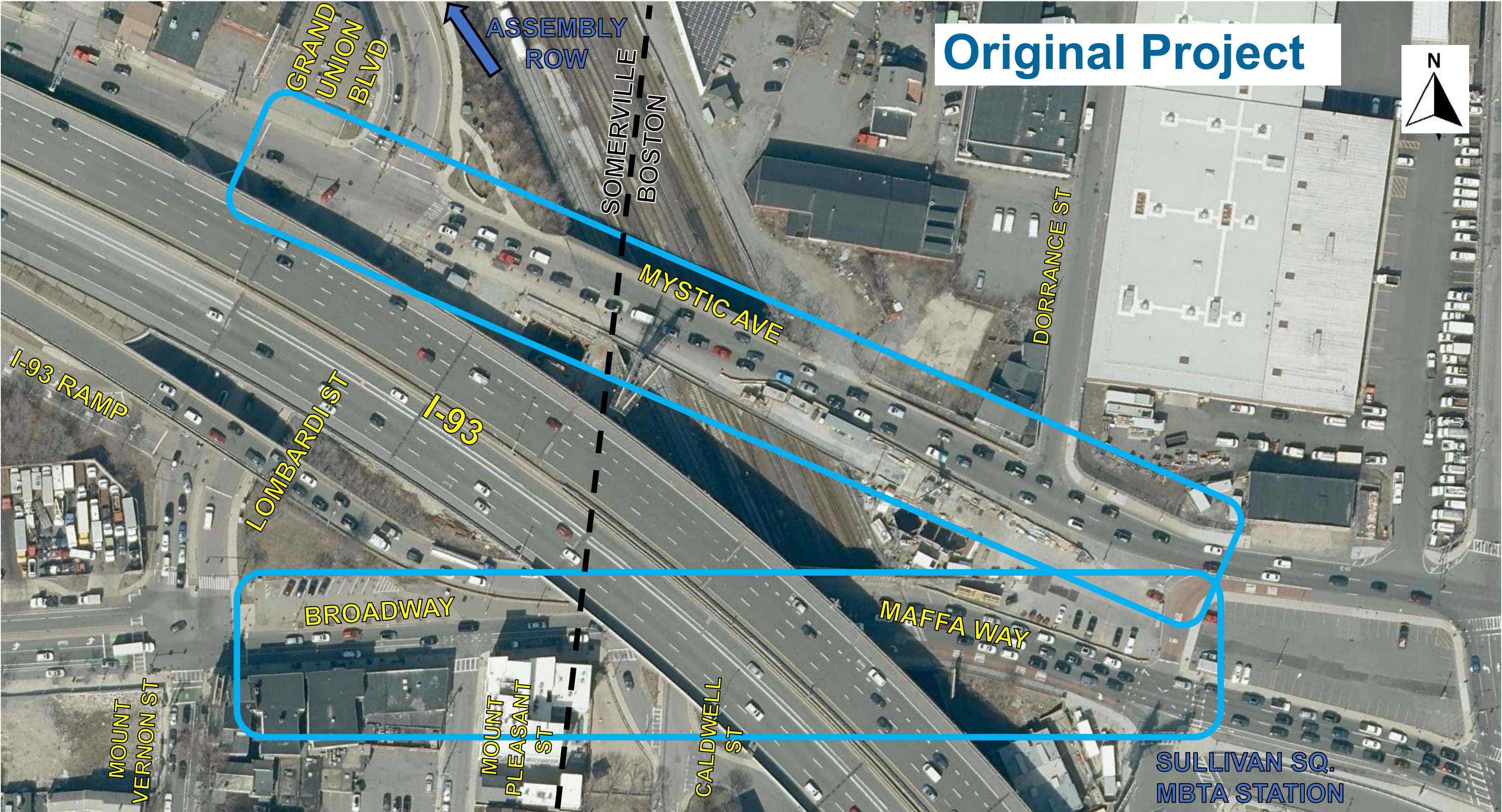


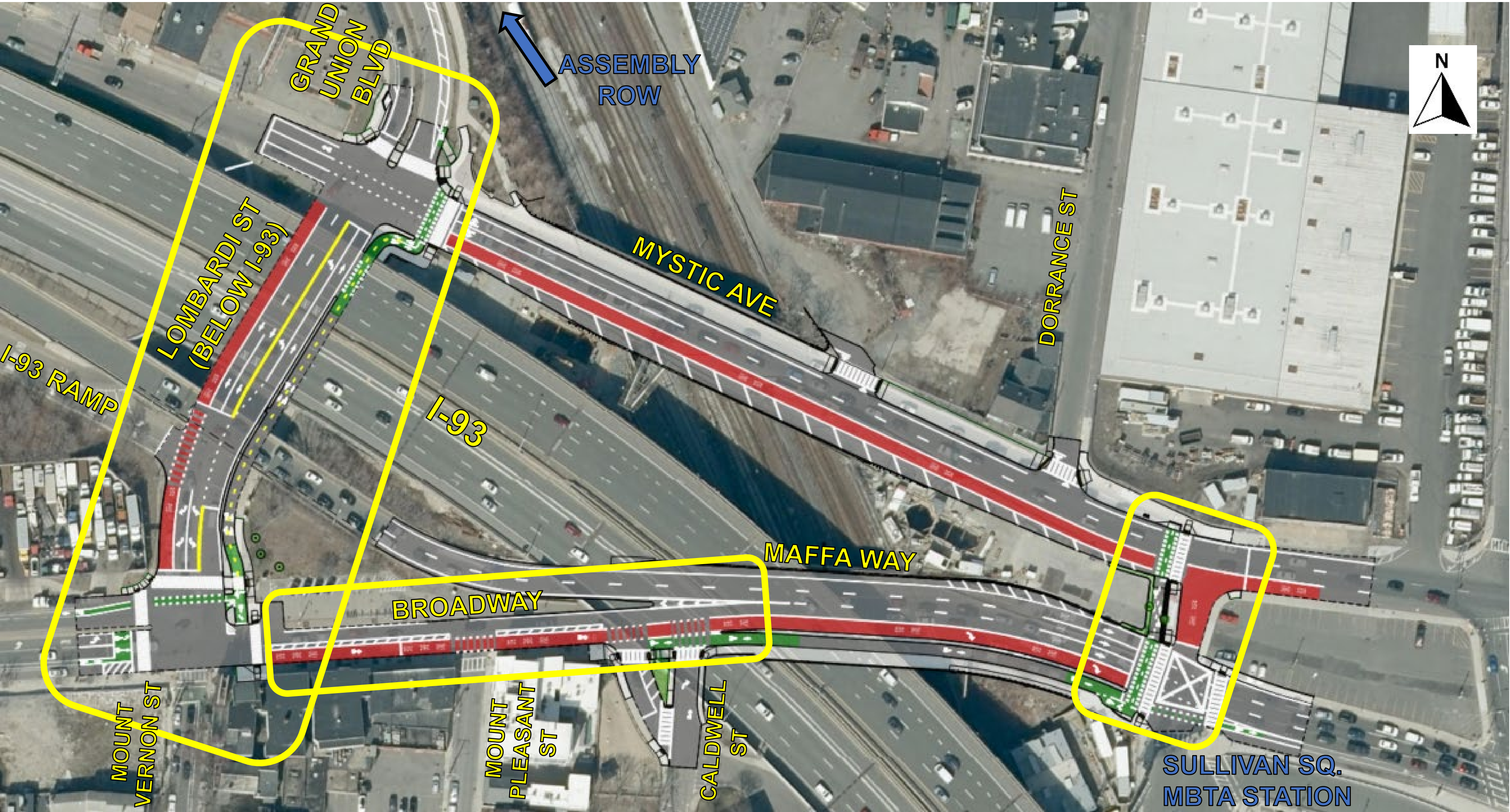
Schedule of Orange Line & Commuter Rail Shutdowns

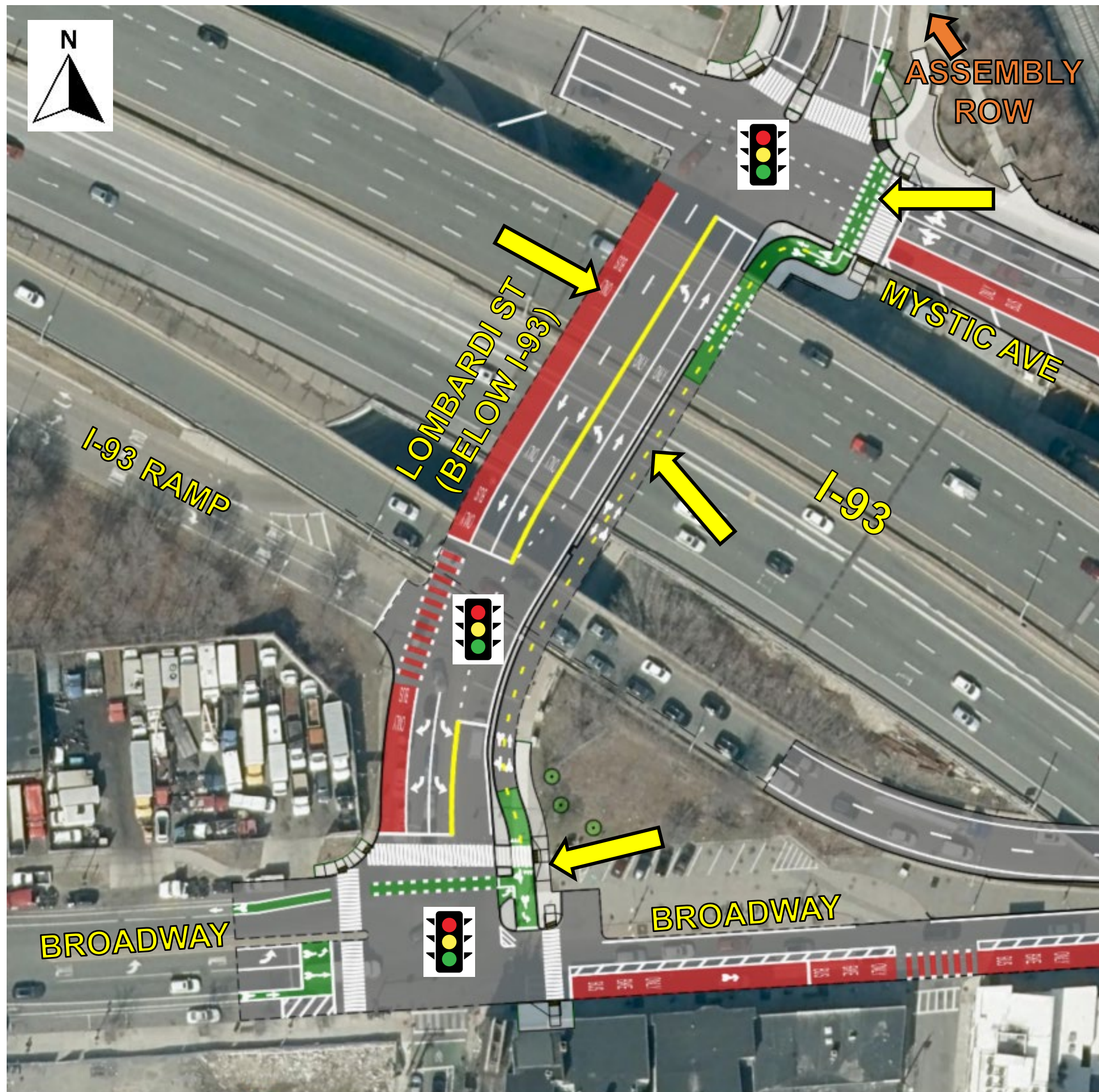
- **March 8 – March 9** Outage of **MBTA Orange Line** and **MBTA Commuter Rail**
 - **Orange line Bus Limits:** Oak Grove – North Station.
 - **Note:** Early access to begin at 8:30 PM on March 7 until end of service.
 - **Commuter Rail Bus Limits:**
 - Haverhill Line: Oak Grove – Malden Center – North Station
 - Newburyport/Rockport Line: Swampscott – North Station.
 - Lowell Line: Anderson/Woburn – North Station
- **May 10 – May 18** Outage of **MBTA Orange Line**
 - **Note:** Early access to begin at 8:30 PM on May 9 until end of service
 - **Orange Line Bus Limits:** Oak Grove – North Station
- Shuttle buses will be provided for passengers during MBTA service outages
- The Maffa Way/Mystic Avenue project team will perform work 24 hours a day during MBTA service outages
- For more information about MBTA service alerts and information, visit <http://www.mbta.com/alerts>



Lombardi Street Improvements



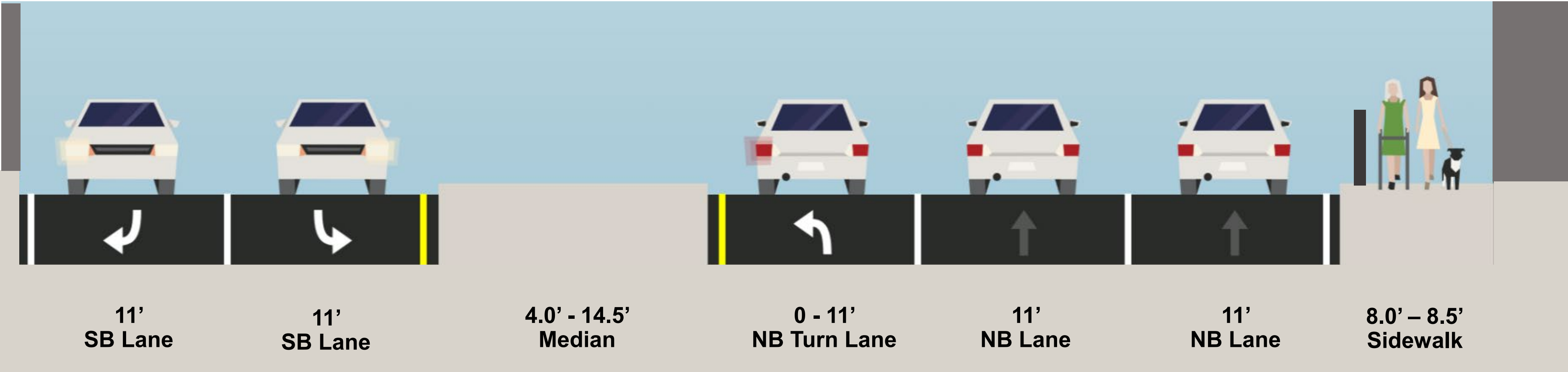




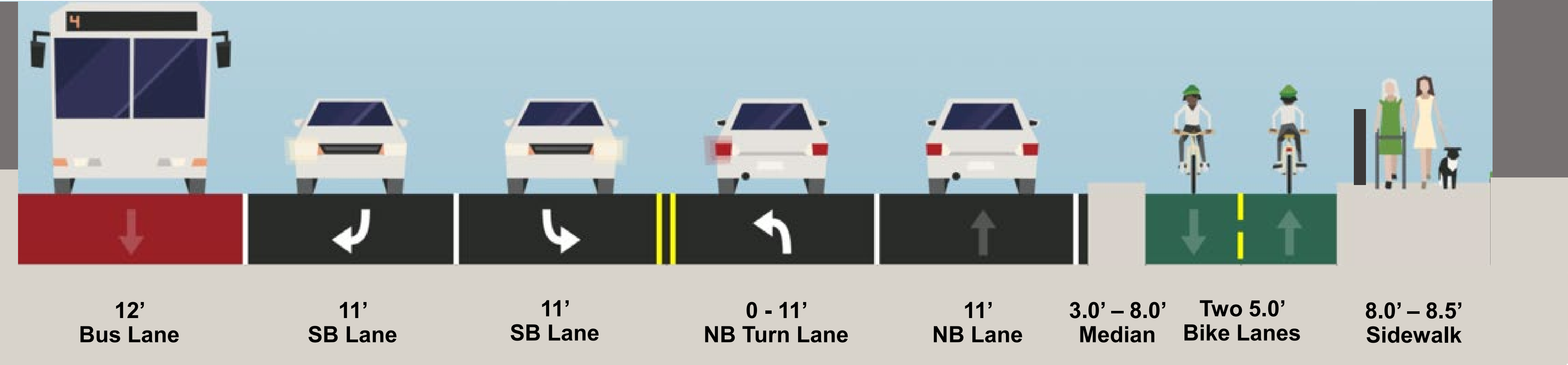
Lombardi Street Design

- + Two-way separated bike lane
- + Southbound Bus Only Lane
- Remove existing center medians
- Remove 1 Northbound Vehicle Lane
- Retain existing sidewalk on east side
- Traffic signal modifications to maintain traffic flow through the area

Lombardi Street Existing Conditions

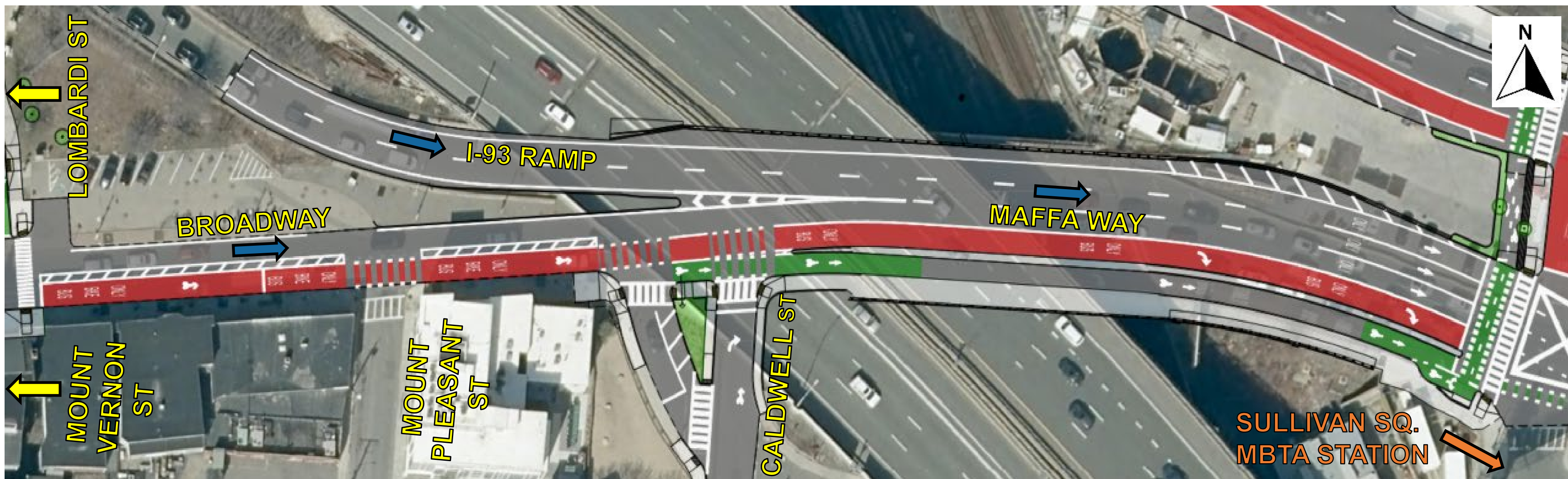


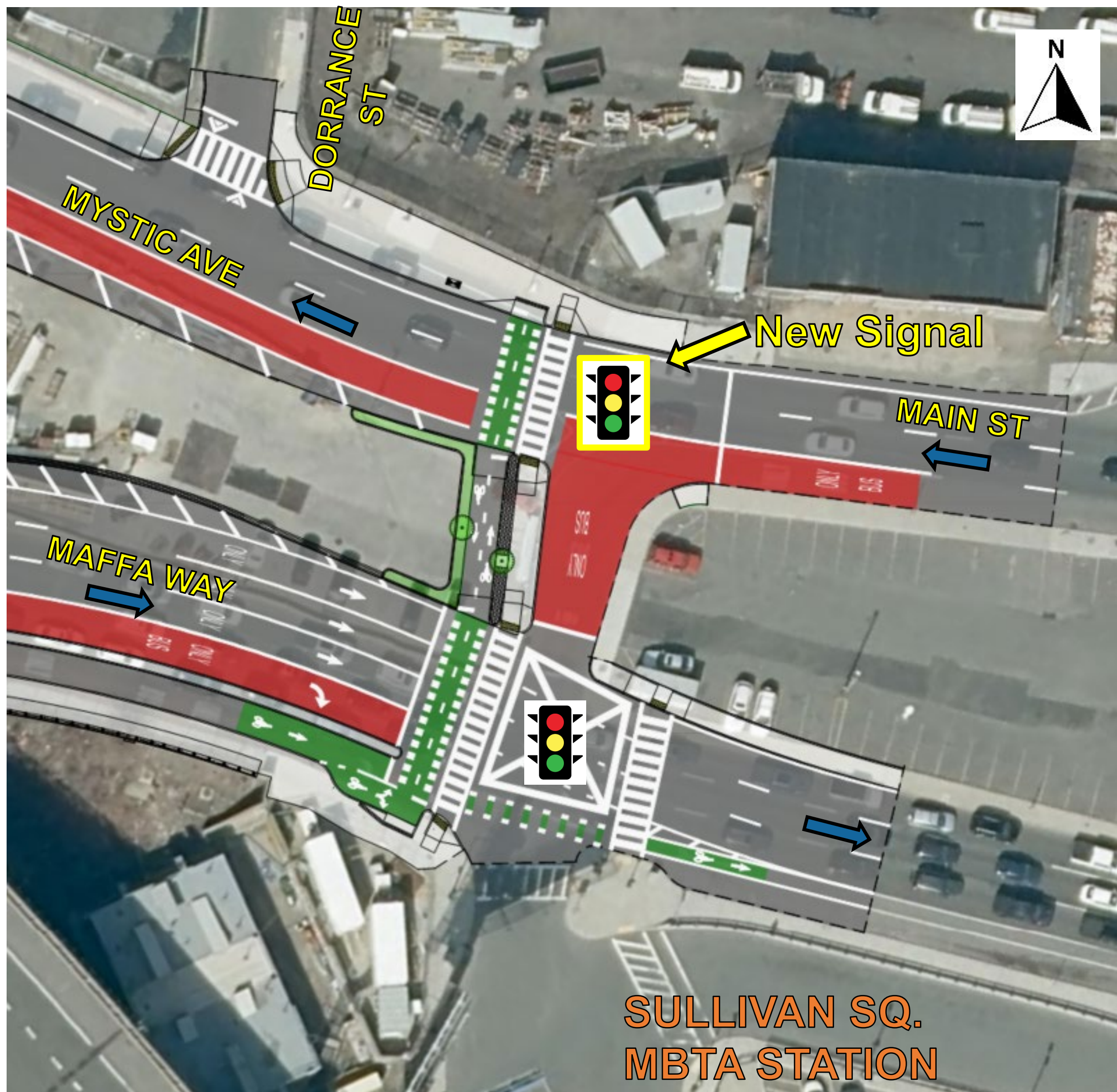
Lombardi Street Proposed Design



Broadway & Maffa Way

- + New Eastbound Bus & Bicycle Only Lane between Lombardi Street and Caldwell Street
- + Provide Separated Bicycle Lane between Caldwell Street and Sullivan Square MBTA Station





New Pedestrian & Bicycle Crossing

- + Separated Two-way Bike crossing and Pedestrian crossing
 - Connect Sullivan Square MBTA Station to Mystic Avenue
- New traffic signal on Main Street to provide for safe crossing across 3 lanes of traffic



**How will we
keep you
informed?**

Continued Public Outreach

- Eblasts and website updates to be provided ahead of construction activities
- MBTA service alerts and information, visit <http://www.mbtta.com/alerts>



How to reach us?

- Submit comments or questions to
MassDOTMaffaMystic@dot.state.ma.us
- Project hotline
781 999-0261
Hotline is answered Monday through Friday between the hours of 7:00am and 4:00pm
All calls received after hours will be returned the next business day.
- Visit the project website to learn more about the project or register to receive project email updates
www.mass.gov/maffamystic



Scan the QR Code to visit the project website



Questions and
discussion



Thank You

Maffa Way & Mystic Ave. Bridge Superstructure Replacements Project

*Bridge Nos. B-16-067 and
B-16-068=S-17-02*

Project File No. 607670 – Contract No. 119537

