



Maffa Way & Mystic Ave. Bridge Superstructure Replacements Project

*Bridge Nos. B-16-067 and
B-16-068=S-17-02*

Somerville Central Public Library | May 13, 2024 | 6:00 PM

Project File No. 607670 – Contract No. 119537

Agenda

- 1 Welcome and Overview
- 2 Project History
- 3 Project Goals
- 4 Construction Approach
- 5 MBTA Shutdowns
- 6 Questions & Discussion



Project Team:

- **MassDOT**

- Theodore Boyle – MassDOT Design-Build Project Manager
- Mauricia Yeb – District 6 Assistant Construction Engineer
- Kevin Laramee – District 6 Area Engineer
- Simao Monteiro – District 6 Resident Engineer
- Dan Fielding – Legislative Affairs

- **MBTA**

- Kathryn Zazzera – Deputy Director of Capital Coordination
- Christine Bresnahan – Project Manager, TOD Group

- **Design Build Team**

- **Skanska - Contractor**

- Rob Pine – Project Executive
 - Frank Salmon – Project Manager
 - Craig Sarro – Project Engineer
 - Michael Scott – Project Engineer

- **CHA - Design Engineer**

- Michael Sullivan – Design Project Manager

Language Translation Speakers Spanish

Claudio Ruiz

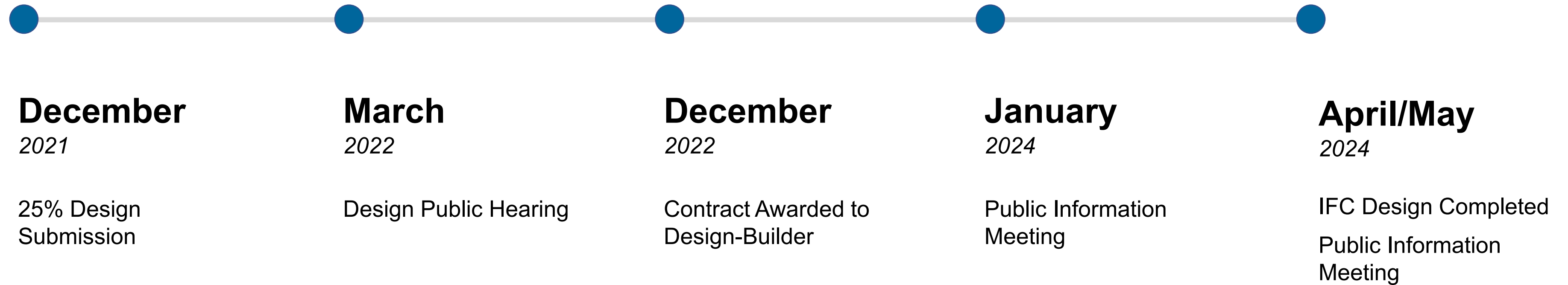
- **Portuguese**

Bertolt Candalice

- **Cantonese**

Terry Yin

How did we get here?



Recent public outreach

- Public Information Meeting held on January 31, 2024, at Somerville Public Library
- 5 pop-up events held at Assembly Station, Sullivan Station, Community College Station (2), Stop & Shop Somerville,
- Flyers in multiple languages distributed to local residences and community centers
- Notice provided to local community organizations
- Notice posted on the project website
- Notice printed in the following newspapers:
 - El Mundo
 - The Brazilian Times
 - The Somerville Times
 - The Charlestown Patriot Bridge
 - Sampan

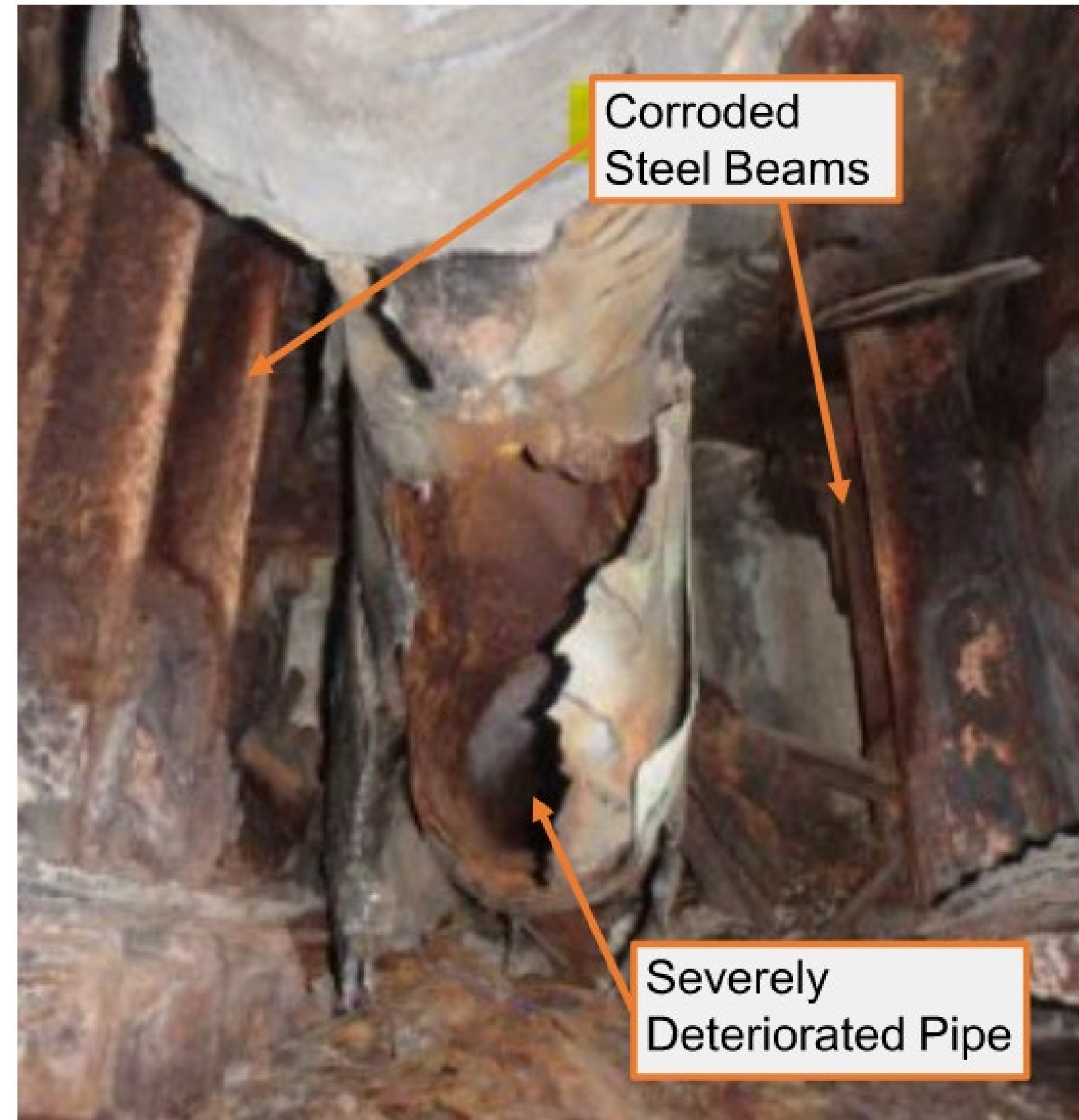
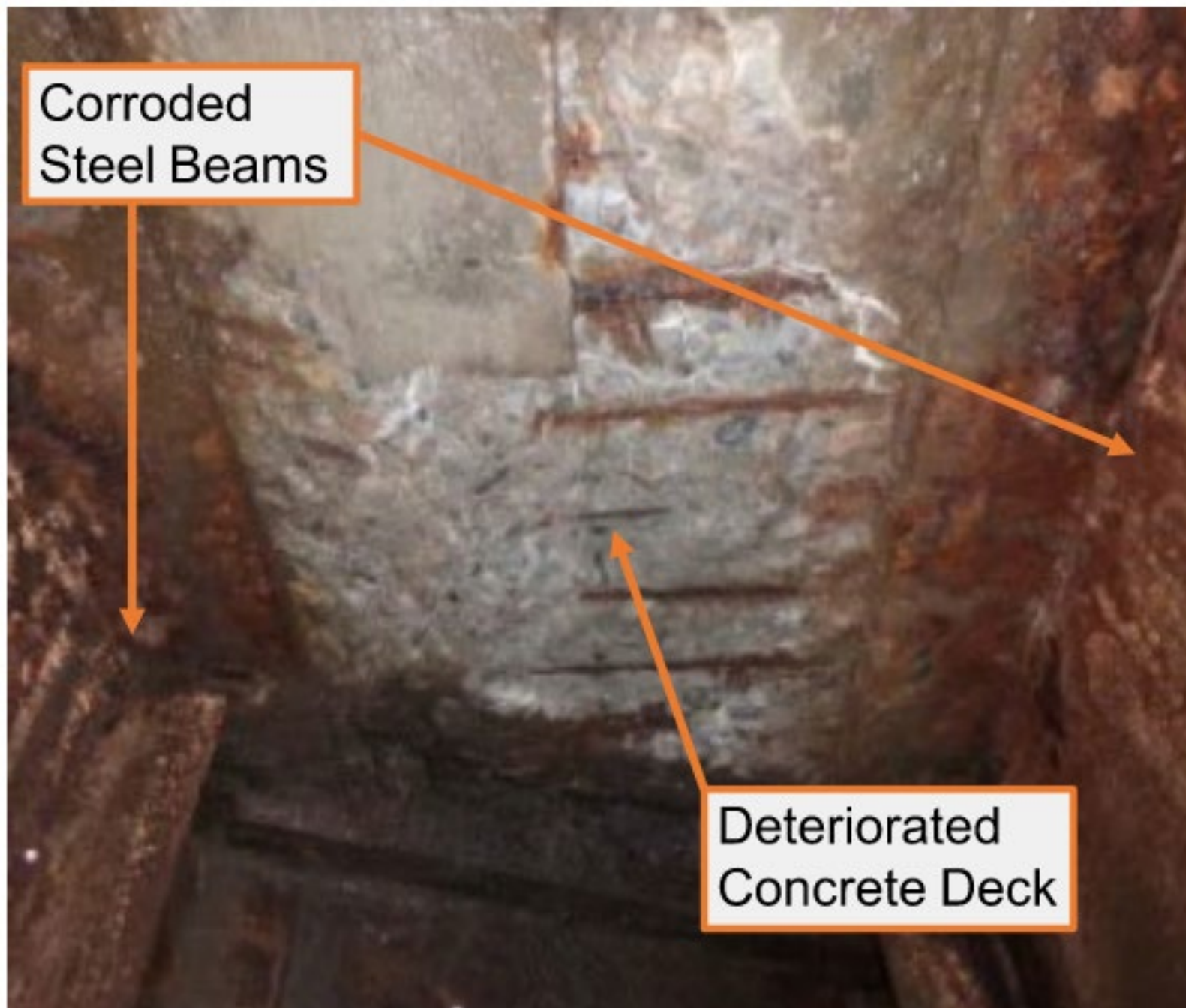




**Why was this
project
initiated?**

Existing Issues

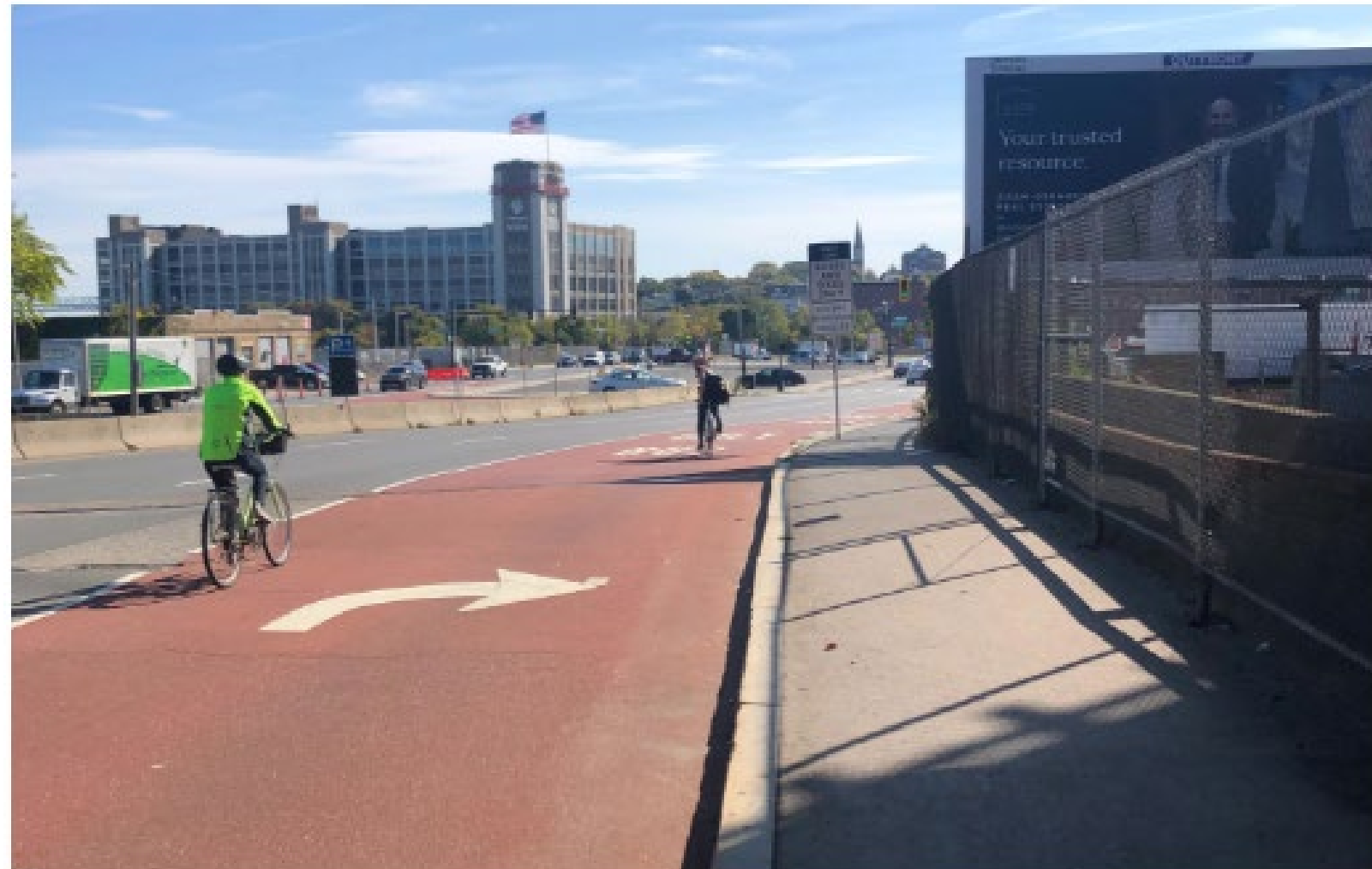
- Bridges are in poor condition



Existing Issues

Pedestrian and Bicycle Safety

- Lack of bicycle accommodations across both bridges.
- Lack of pedestrian accommodations for new and proposed development in Sullivan Square and Assembly Square.

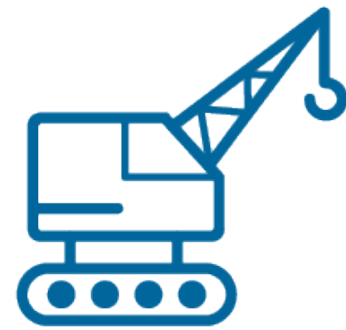




What do we want to accomplish?

Project Goals

- Address Structural Deficiencies
 - Replace both bridge superstructures with new, code compliant and low-maintenance bridges
- Address Multimodal Accessibility
 - Maintain general purpose travel lanes on each bridge
 - Provide separate bicycle accommodations
 - Improve sidewalks
 - Maintain the existing bus lane on Maffa Way
 - Add new bus lane on Mystic Ave
- Integrate with Future Projects
 - Rutherford Avenue improvements
 - Private developments
 - Assembly Square completion



**How will the
bridges be
constructed?**

Project Progress



April 2024
Issued for
Construction Plans



Spring 2024
Phase 1 Construction



Spring 2025
Phase 2 Construction



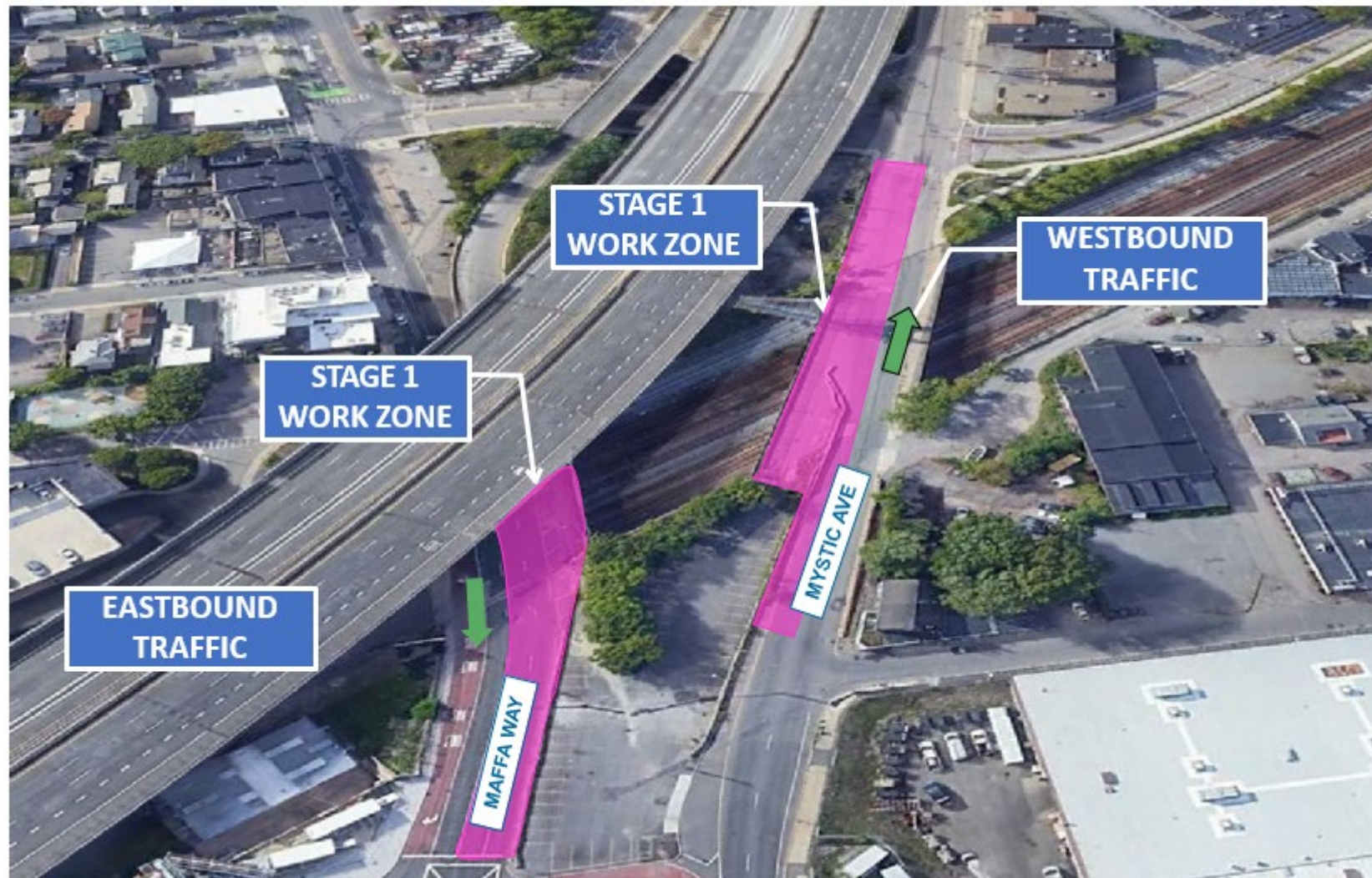
Summer 2026
Both Bridges Fully
Open to Traffic



Winter 2026
Project Final
Completion

Phase 1 Construction Approach

Phase 1

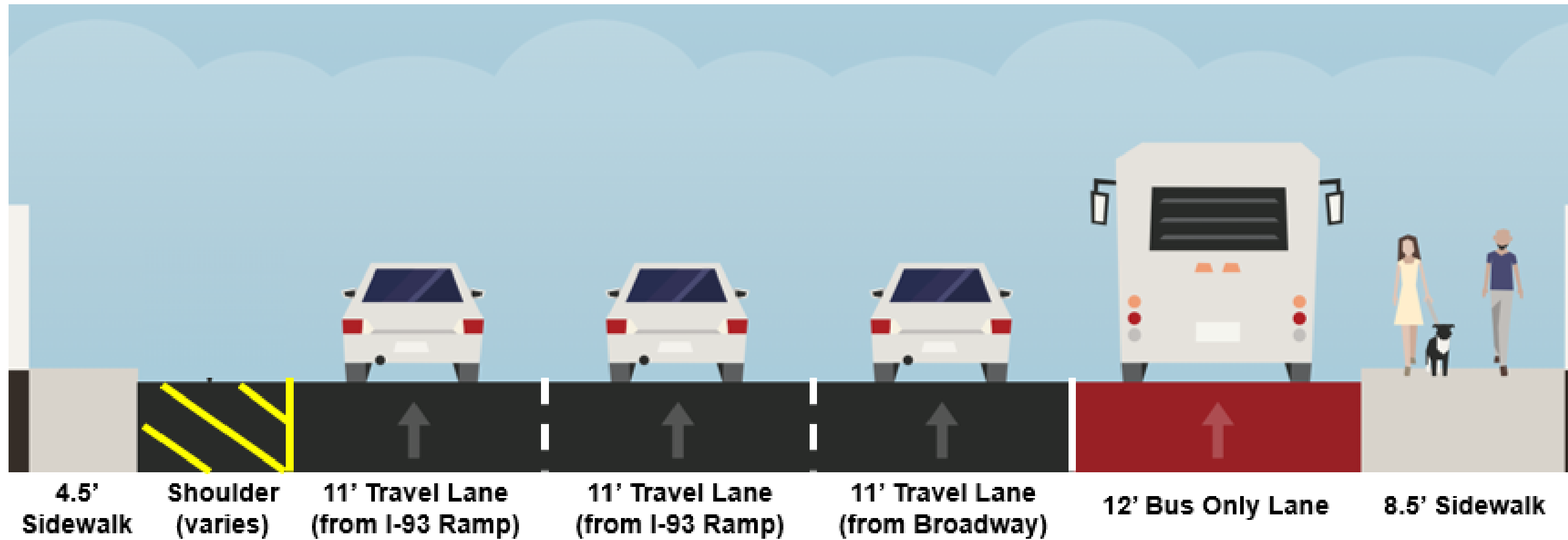


Maintain two lanes of traffic and bicycle/pedestrian access

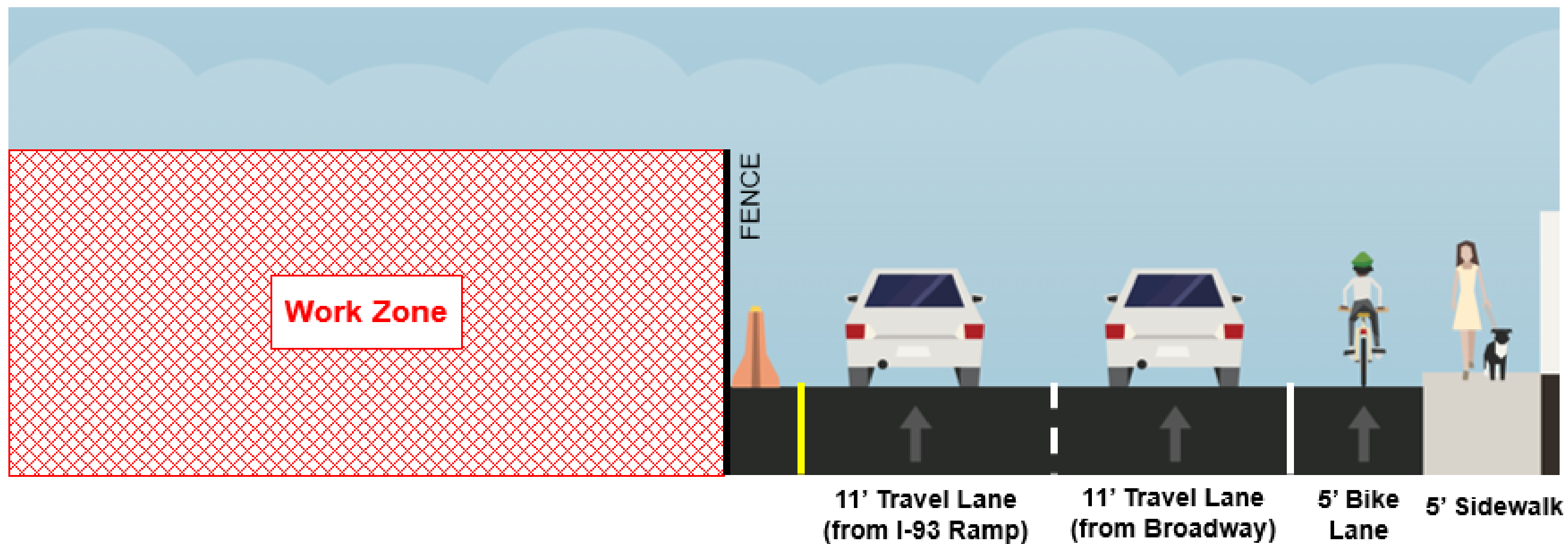
- Replace north side of Maffa Way Bridge
- Replace south side of Mystic Ave Bridge
- Schedule
 - Public information meeting prior to construction
 - Spring 2024 – Phase 1 construction begins
 - June 2024 – Orange Line Shutdown #1
 - 9-day outage of MBTA Orange Line tentatively planned for the Sullivan Square area
 - Spring 2025 – Phase 1 construction completion

Maffa Way Bridge Original Condition

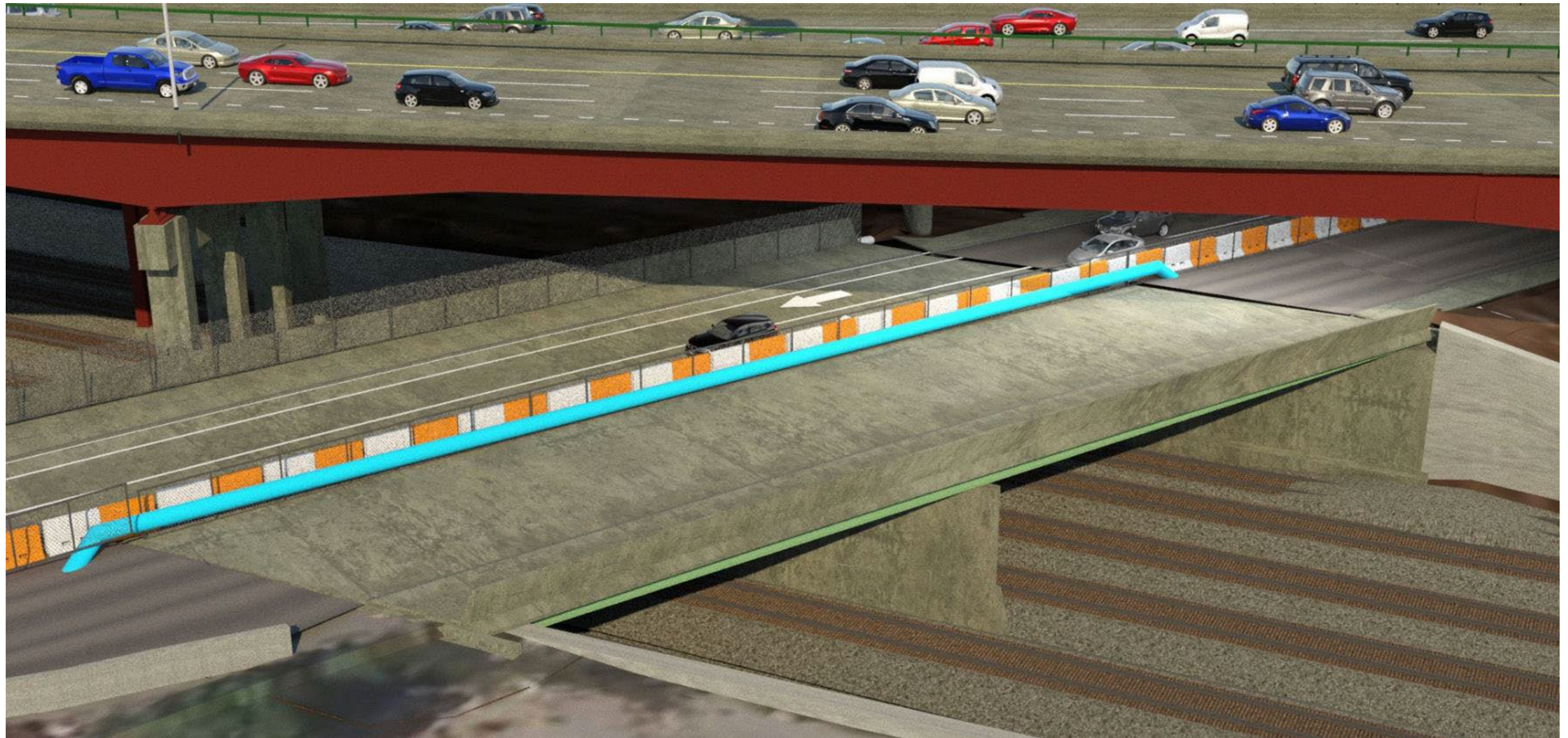
Cross Section – Between Caldwell Street and Sullivan Square T Station



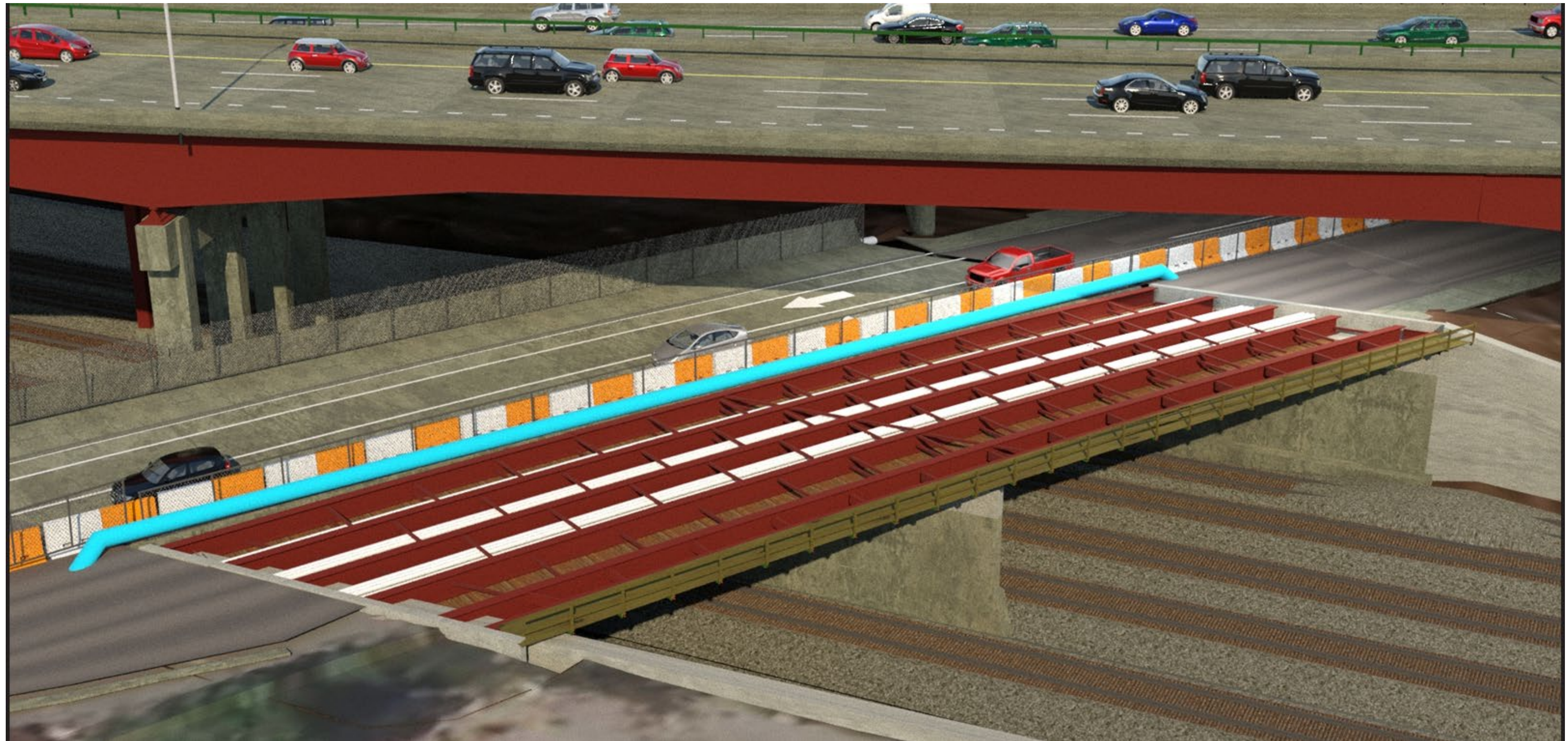
Maffa Way Bridge Phase 1 – Implemented April 29, 2024



Maffa Way Bridge – Phase 1 Traffic Control Spring 2024

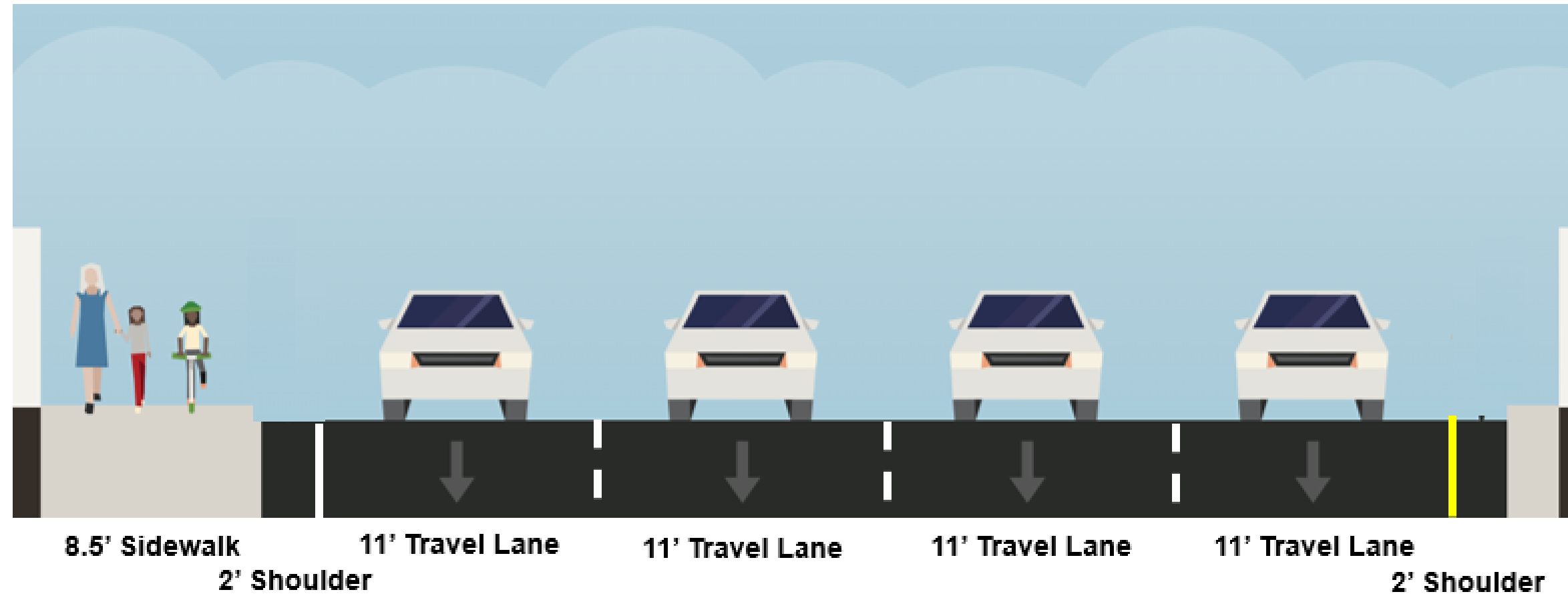


Maffa Way Bridge – Phase 1 Construction (expected completion Spring 2025)

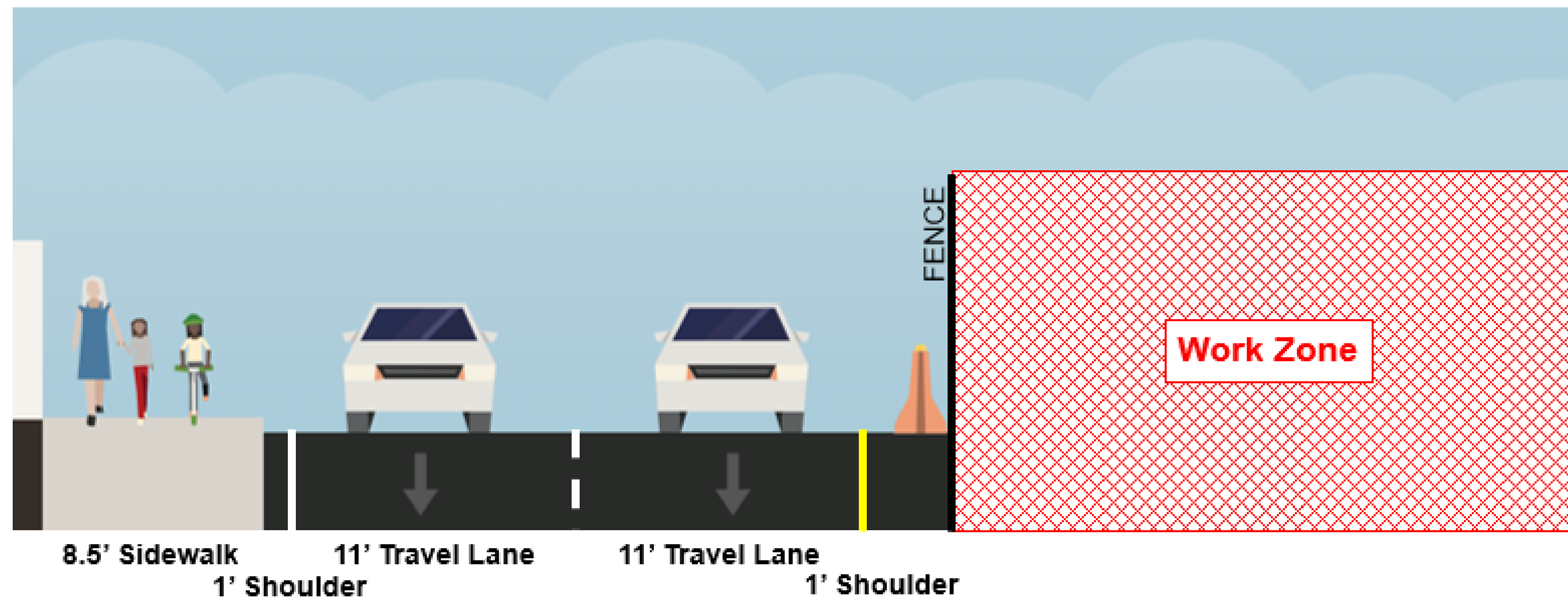


Mystic Ave Bridge Original Condition

Cross Section – Between Dorrance Street and Assembly Square Drive



Mystic Ave Bridge Phase 1 – Implemented April 29, 2024



Mystic Ave Bridge – Phase 1 Traffic Control Spring 2024



Mystic Ave Bridge – Phase 1 Construction (expected completion Spring 2025)



Managing Construction Impacts

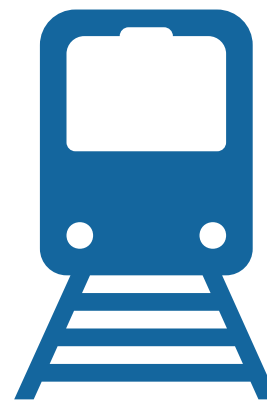
- Work hours
 - Standard 7am-3pm w/ limited exceptions for certain activities
 - Few shutdowns including one 9-Day Outage in 2024 & 2025 will involve work 24 hours a day
 - Incentives/disincentives for Design-Build Team to ensure compliance with contract timelines
- Traffic
 - Traffic signal changes along impacted routes.
 - Modifications to signal timing can be adjusted to minimize impacts
 - Portable changeable message signs will provide advanced notice
 - Dedicated construction truck route for major deliveries
 - Dedicated off-site contractor parking under I-93



Managing Construction Impacts

- Noise
 - Monitor noise during construction activities
 - Implement specific demolition methods to avoid “hammering” of concrete infrastructure as much as possible
- Dust
 - Streets in project vicinity will be swept after major work activities that track any soil into adjacent roadways
 - Stockpiles will either be hydroseeded or covered if present for a long period of time
 - Water will be utilized as needed throughout the site to mitigate dust
- Pest Control
 - Pest Control services will be utilized throughout the course of the project
 - Bait stations have been set along the perimeter of the project and will be maintained monthly to ensure effectiveness





**What are the
MBTA
shutdown
impacts?**

Coordination with MBTA Orange Line & Commuter Rail

- MassDOT and MBTA are coordinating to ensure efficiency across projects to limit service interruptions.
- Maffa Way/Mystic Avenue team will take advantage of previously planned shutdowns of the Orange Line and Commuter Rail by temporarily extending work hours to 24 hours a day.



Schedule of Orange Line & Commuter Rail Shutdowns

- **May 18 – 19** Outage of MBTA Orange Line and MBTA Commuter Rail
 - **Bus Limits:** Oak Grove – North Station.
 - **Note:** Early access to begin at 9:00 PM on May 17 until end of service.
 - **Commuter Rail Bus Limits:** Haverhill Line: Anderson/Woburn to Reading Depot, Reading Depot to Oak Grove for local trips or connecting to Lowell Commuter Rail Line to continue to North Station; Newburyport/Rockport Line: Swampscott – North Station.
- **May 23 – May 24 Early access 9:00 PM – 5:15 AM**
 - **Bus Limits:** Oak Grove – North Station
- **May 28 – June 6** Outage of MBTA Orange Line
 - **Bus Limits:** Back Bay – Wellington
- **June 22 – June 30** Outage of MBTA Orange Line
 - **Bus Limits:** Wellington – North Station
- **July 13th & July 14th 2-day outage of MBTA Commuter Rails**
 - **Passengers would be diverted to Orange Line during this period.**
- Shuttle buses will be provided for passengers during MBTA service outages
- The Maffa Way/Mystic Avenue project team will perform work 24 hours a day during MBTA service outages
- For more information about MBTA service alerts and information, visit <http://www.mbta.com/alerts>



**How will we
keep you
informed?**

Continued Public Outreach

- Eblasts and website updates to be provided ahead of construction activities
- Continued outreach ahead of MBTA outages
- Future Public Meetings and Stakeholder Briefings



How to reach us?

- Submit comments or questions to
MassDOTMaffaMystic@dot.state.ma.us
- Project hotline
781 999-0261
Hotline is answered Monday through Friday between the hours of 7:00am and 4:00pm
All calls received after hours will be returned the next business day.
- Visit the project website to learn more about the project or register to receive project email updates
<https://www.mass.gov/info-details/about-the-maffa-waymystic-avenue-bridge-superstructure-replacements>



Scan the QR Code to visit the project website



Questions and discussion



Thank You

Maffa Way & Mystic Ave. Bridge Superstructure Replacements Project

*Bridge Nos. B-16-067 and
B-16-068=S-17-02*

Charlestown Knights of Columbus | May 9, 2024 | 6:00 PM

Project File No. 607670 – Contract No. 119537