



Maffa Way & Mystic Ave. over MBTA Orange Line and Commuter Rail

*Bridge Nos. B-16-067 and
B-16-068=S-17-02*

Central Branch Somerville Public Library | January 31, 2024 | 6:00 PM

Project File No. 607670 – Contract No. 119537

Agenda

- 1 Welcome and Overview
- 2 Project History
- 3 Project Goals
- 4 Construction Approach
- 5 Orange Line Shutdown
- 6 Questions & Discussion



Project Team:

- **MassDOT**

- Theodore Boyle – MassDOT Design-Build Project Manager
- Mauricia Yeb – District 6 Assistant Construction Engineer
- Kevin Laramée – District 6 Area Engineer
- Simao Monteiro – District 6 Resident Engineer
- Dan Fielding – Legislative Affairs

- **MBTA**

- Kathryn Zazzera – Deputy Director of Capital Coordination
- Christine Bresnahan – Project Manager, Transit Oriented Development

- **Design Build Team**

- Skanska - Contractor**

- Rob Pine – Project Executive
 - Frank Salmon – Project Manager
 - Craig Sarro – Project Engineer

- CHA - Design Engineer**

- Michael Sullivan – Design Project Manager

Language Translation Speakers

- **Spanish**

Magdalena Gomez King

- **Portuguese**

Bertolt Candalice

- **Cantonese**

Terry Yin

How did we get here?



Recent public outreach

- Pop-up event held on January 18, 2024, at Sullivan Station
- Flyers in multiple languages distributed to local residences and community centers
- Notice provided to local community organizations
- Notice posted on the project website
- Notice printed in the following newspapers:
 - El Mundo
 - The Brazilian Times
 - The Somerville Times
 - The Charlestown Patriot Bridge

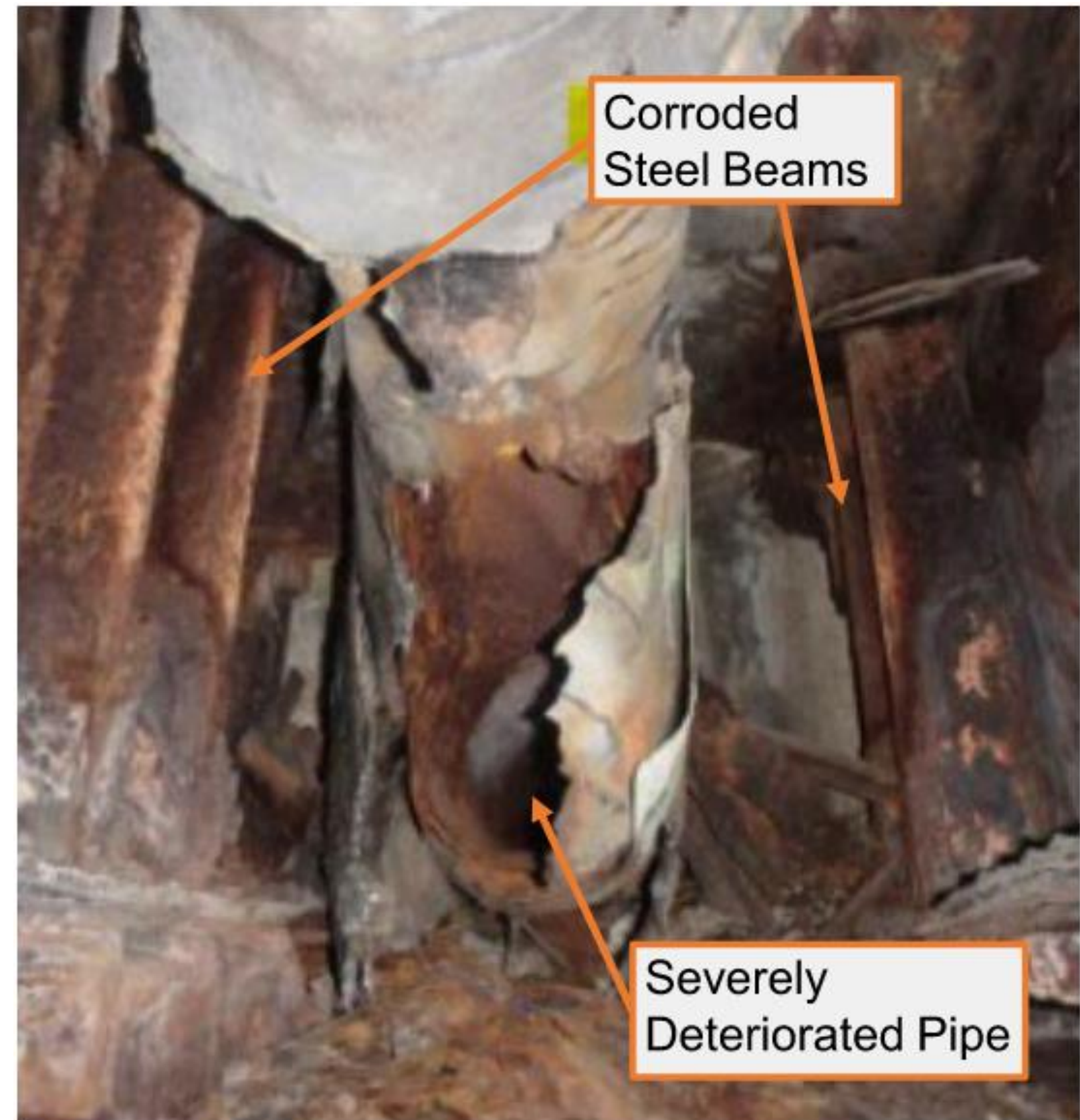
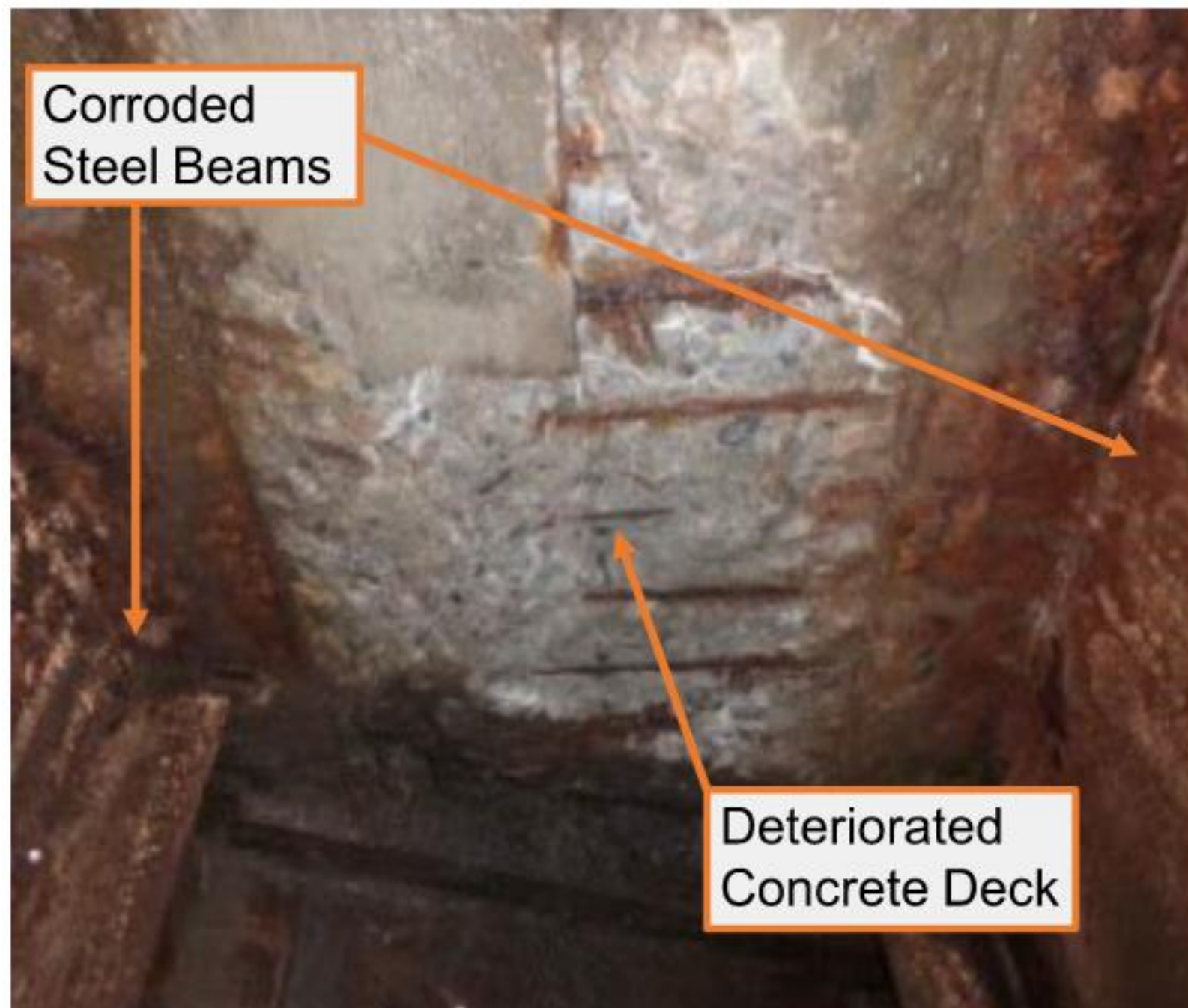




**Why was this
project
initiated?**

Existing Issues

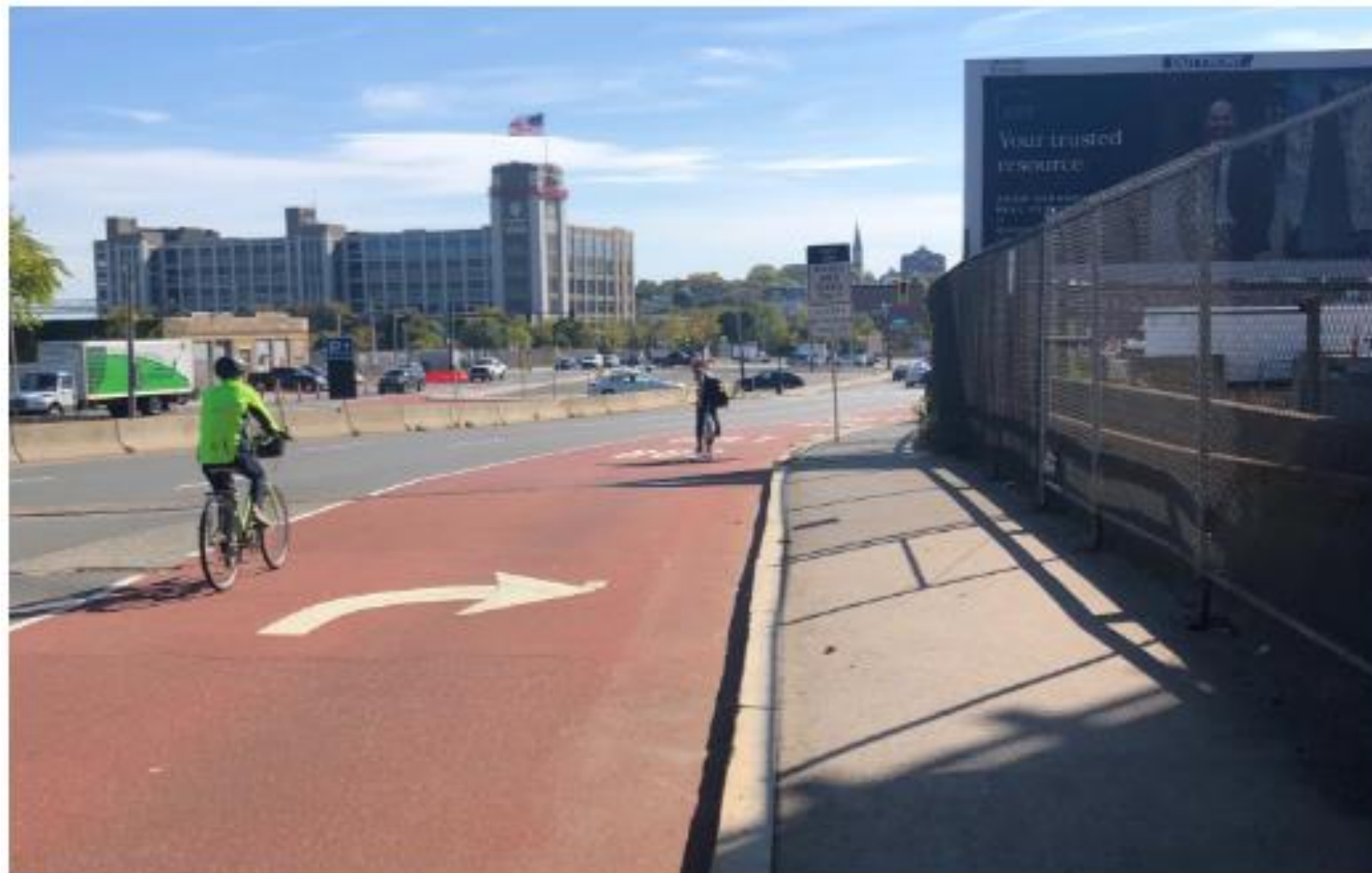
- Bridges are in poor condition



Existing Issues

Pedestrian and Bicycle Safety

- Lack of bicycle accommodations across both bridges.
- Lack of pedestrian accommodations for new and proposed development in Sullivan Square and Assembly Square.





**What do we
want to
accomplish?**

Project Goals

- Address Structural Deficiencies
 - Replace both bridge superstructures with new, code compliant and low-maintenance bridges
- Address Multimodal Accessibility
 - Maintain general purpose travel lanes on each bridge
 - Provide separate bicycle accommodations
 - Improve sidewalks
 - Maintain the existing bus lane on Maffa Way
 - Add new bus lane on Mystic Ave
- Integrate with Future Projects
 - Rutherford Avenue improvements
 - Private developments
 - Assembly Square completion



**How will the
bridges be
constructed?**

Project Progress



April 2024
Issued for
Construction Plans



Spring 2024
Phase 1 Construction



Spring 2025
Phase 2 Construction



Summer 2026
Both Bridges Fully
Open to Traffic



Winter 2026
Project Final
Completion

Phase 1 Construction Approach

Phase 1

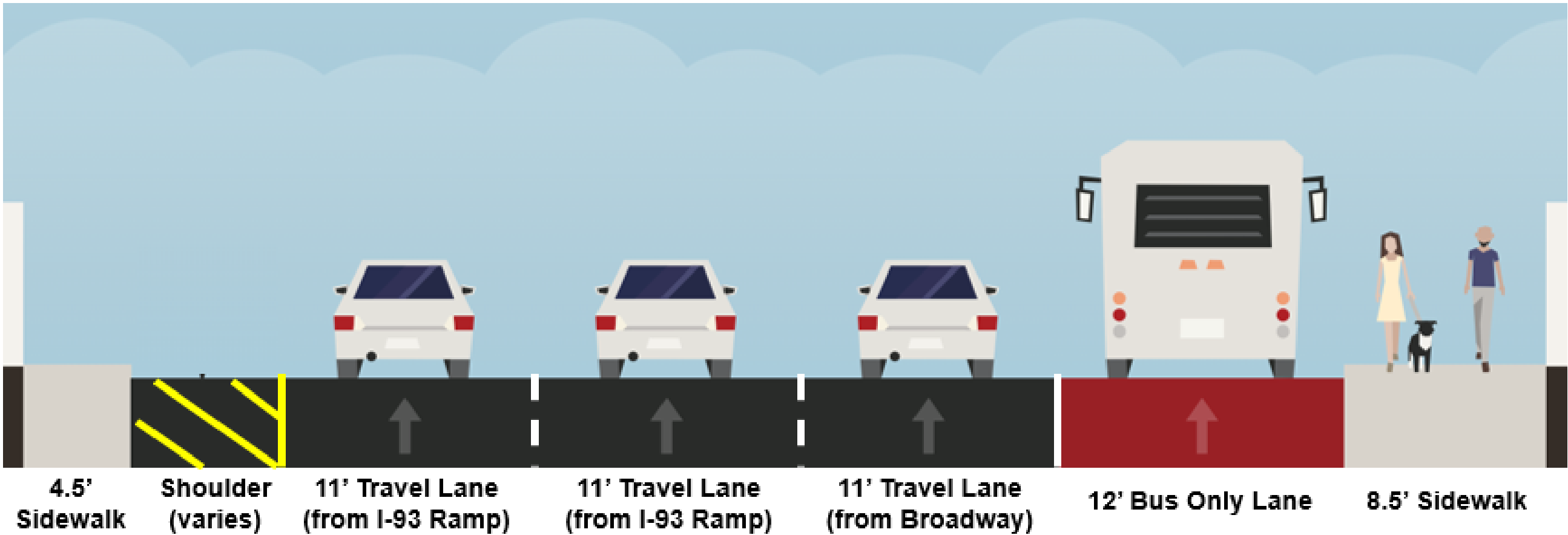


Maintain two lanes of traffic and bicycle/pedestrian access

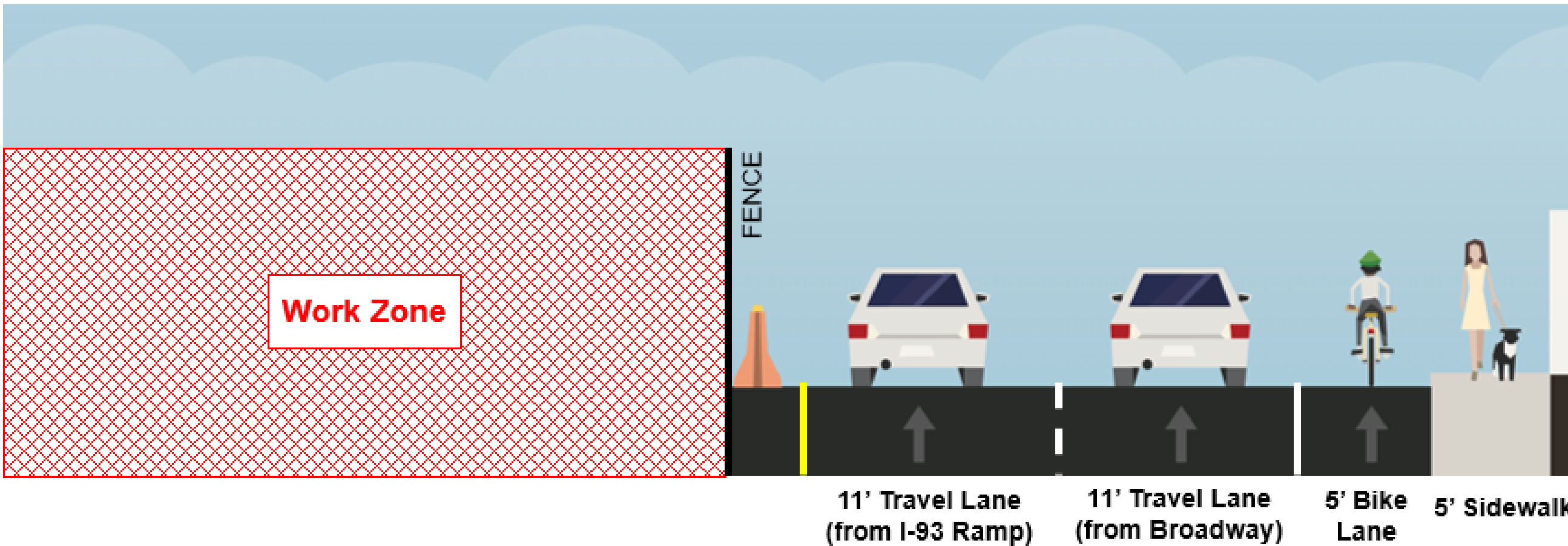
- Replace north side of Maffa Way Bridge
- Replace south side of Mystic Ave Bridge
- Schedule
 - Public information meeting prior to construction
 - Spring 2024 – Phase 1 construction begins
 - June 2024 – Orange Line Shutdown #1
 - 9-day outage of MBTA Orange Line tentatively planned for the Sullivan Square area
 - Spring 2025 – Phase 1 construction completion

Maffa Way Bridge Existing Condition

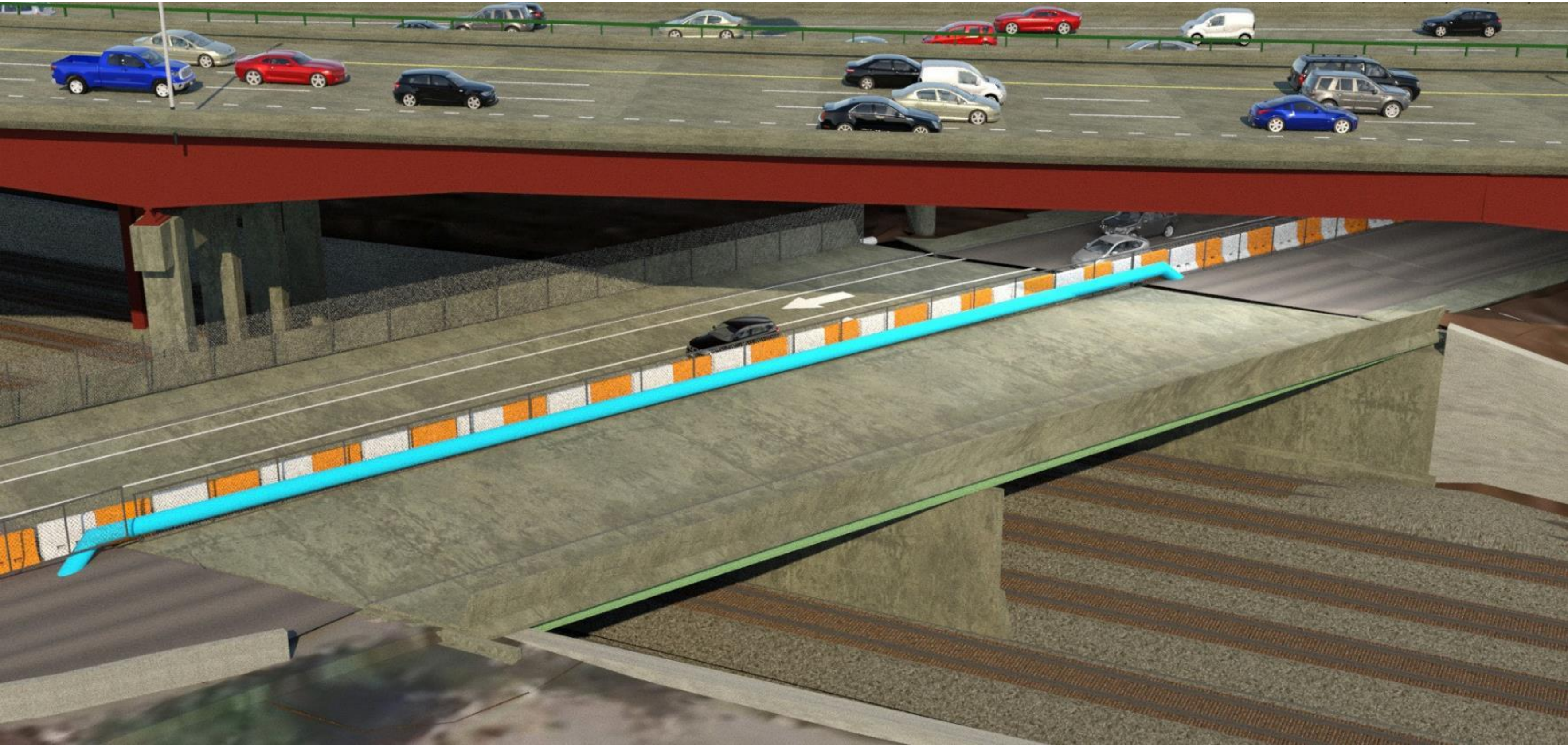
Cross Section – Between Caldwell Street and Sullivan Square T Station



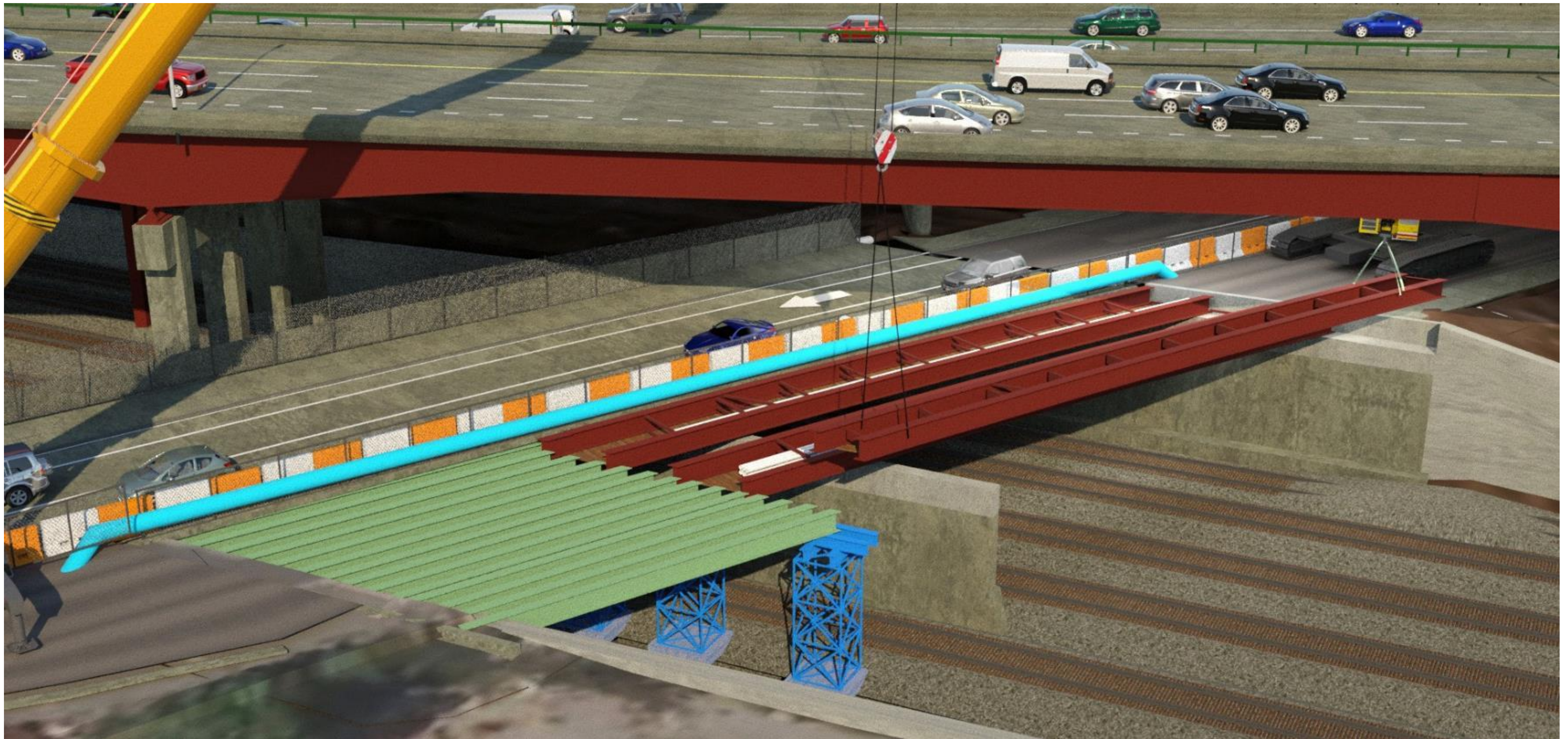
Maffa Way Bridge Phase 1 - 2024



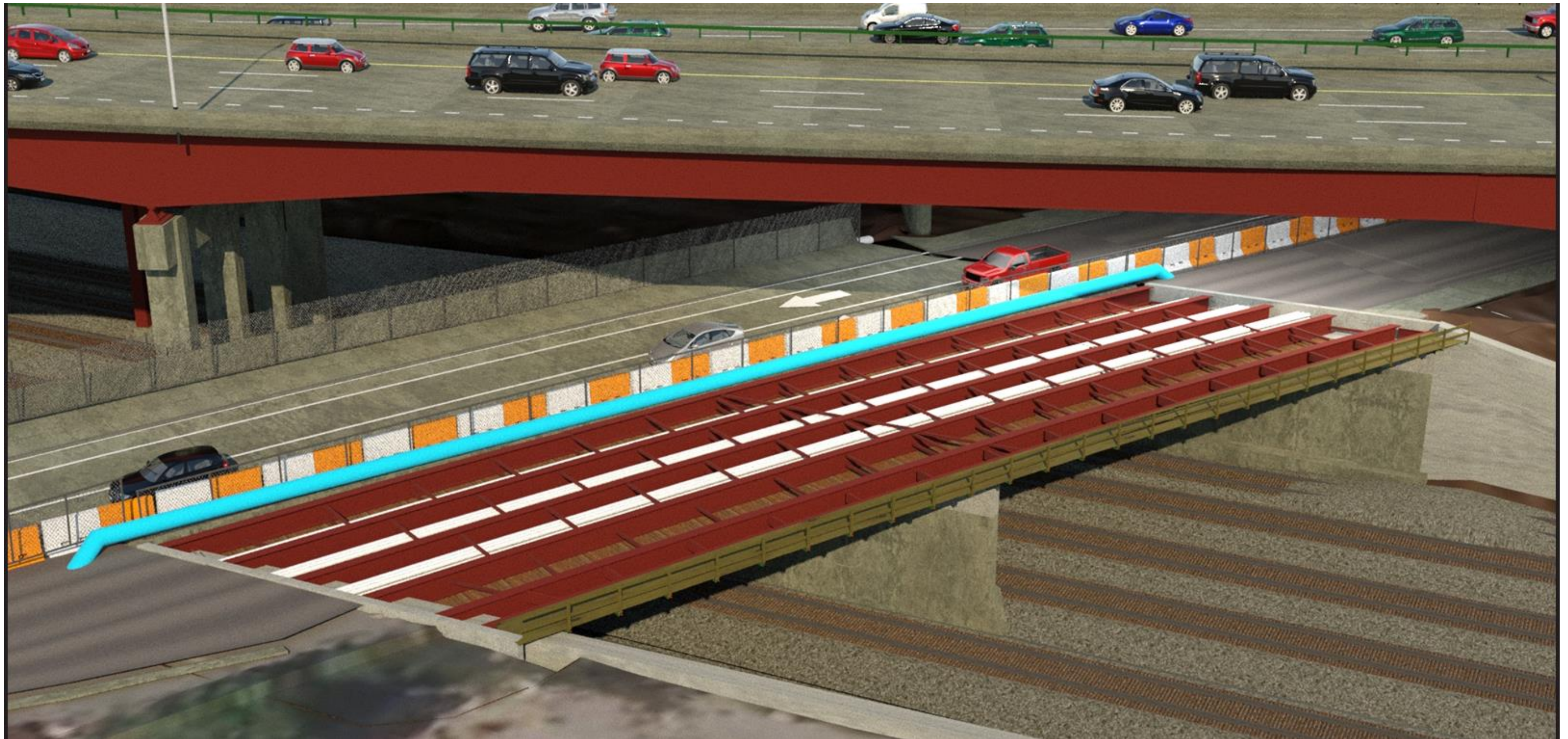
Maffa Way Bridge – Phase 1 Traffic Control Spring 2024



Maffa Way Bridge – Phase 1 Construction (north side of bridge)

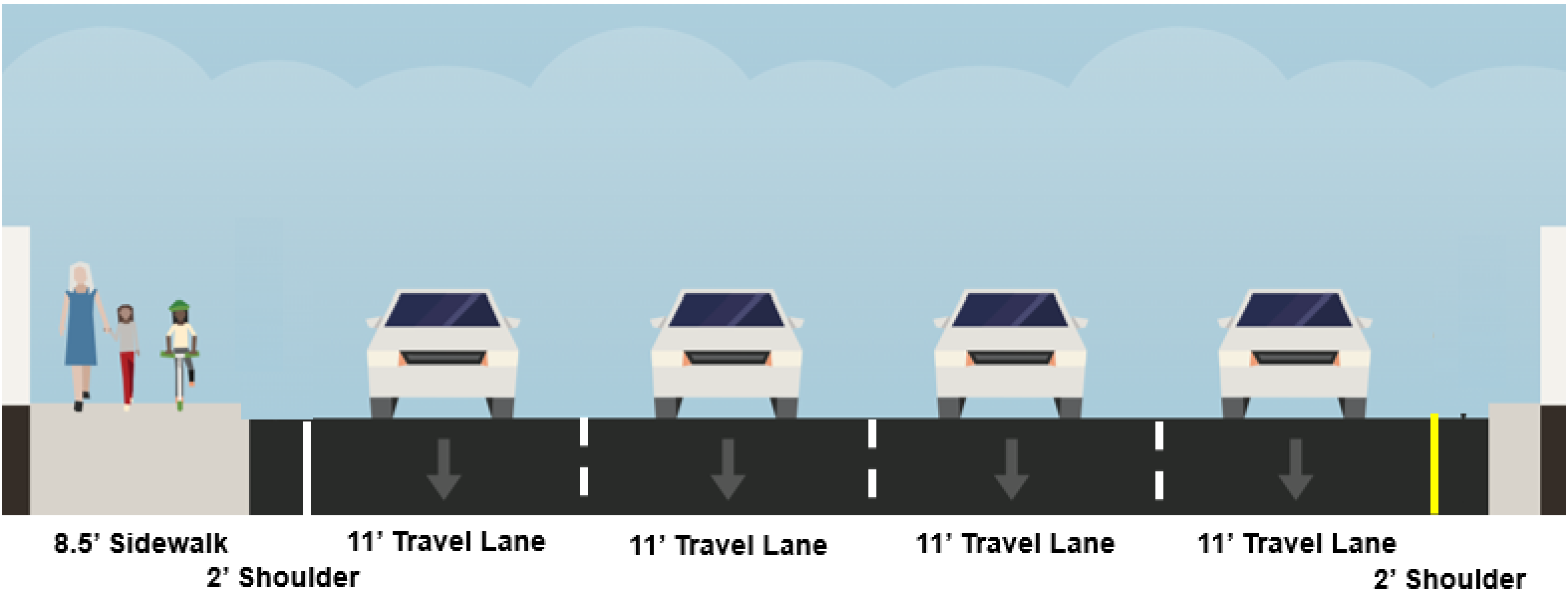


Maffa Way Bridge – Phase 1 Construction (expected completion spring 2025)

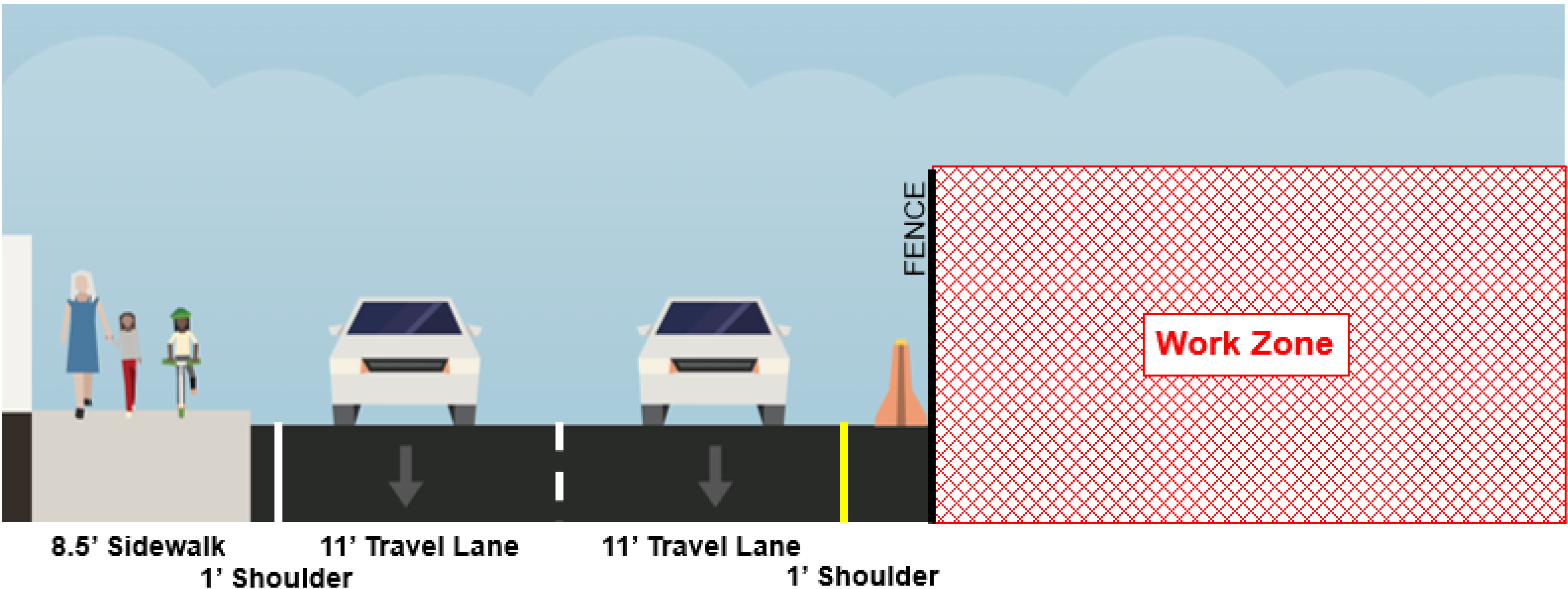


Mystic Ave Bridge Existing Condition

Cross Section – Between Dorrance Street and Assembly Square Drive



Mystic Ave Bridge Phase 1 - 2024



Mystic Ave Bridge – Phase 1 Traffic Control Spring 2024



Mystic Ave Bridge – Phase 1 Construction (south side of bridge)



Mystic Ave Bridge – Phase 1 Construction (expected completion spring 2025)



Phase 2 Construction Approach

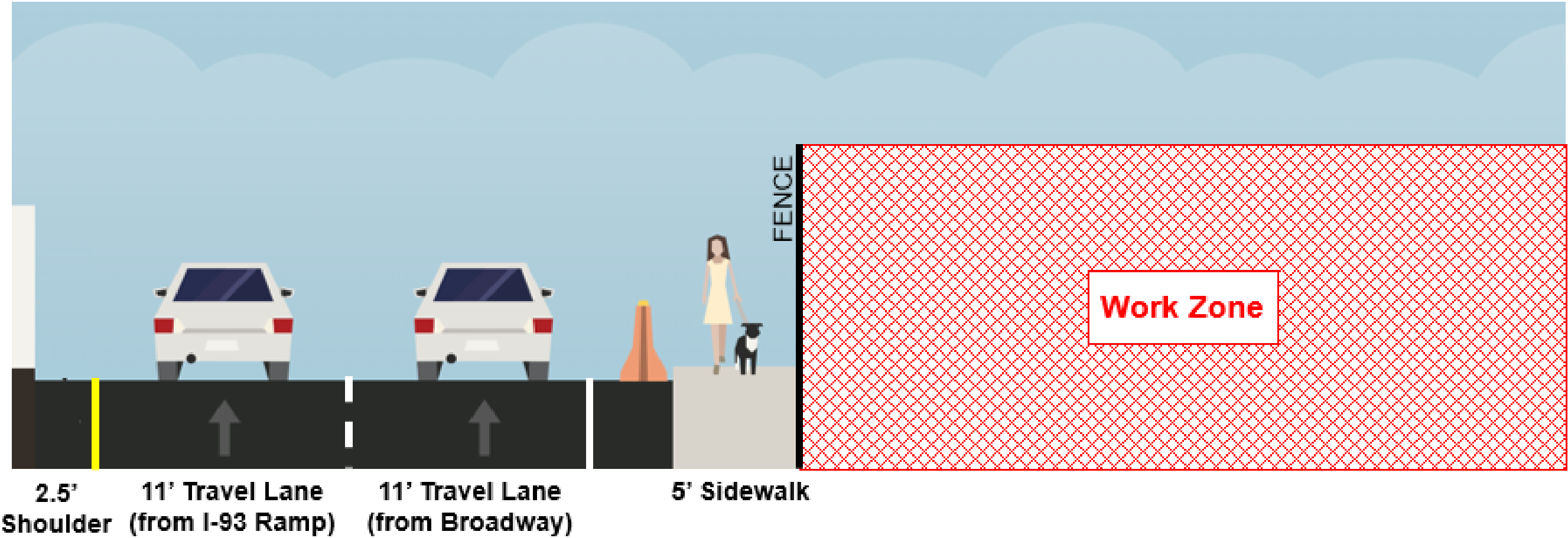
Phase 2



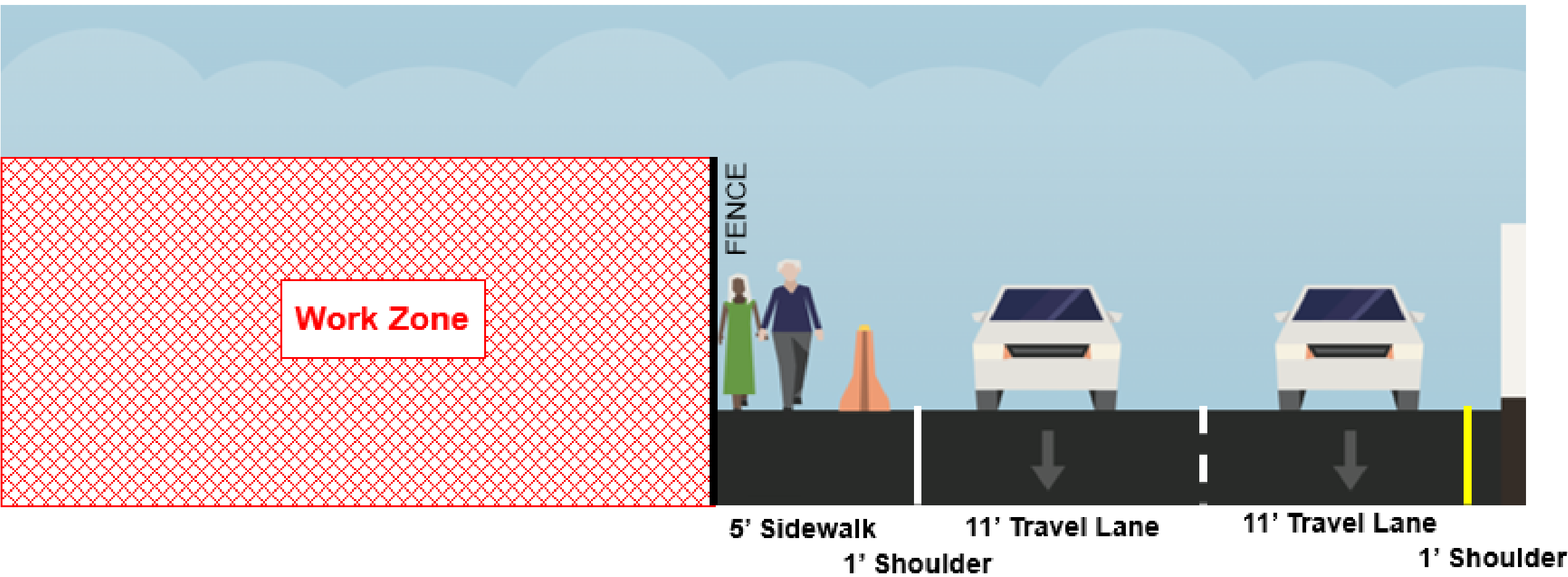
Maintain two lanes of traffic and bicycle/pedestrian access

- Replace south side of Maffa Way Bridge
- Replace north side of Mystic Ave Bridge
- Schedule
 - Public information meeting prior to construction
 - Spring 2025 – Phase 2 construction begins
 - June 2025 – Orange Line Shutdown #2
 - 9-day outage of MBTA Orange Line tentatively planned for the Sullivan Square area
 - Summer 2026 – Phase 2 construction completion
- Winter 2026 – project completion

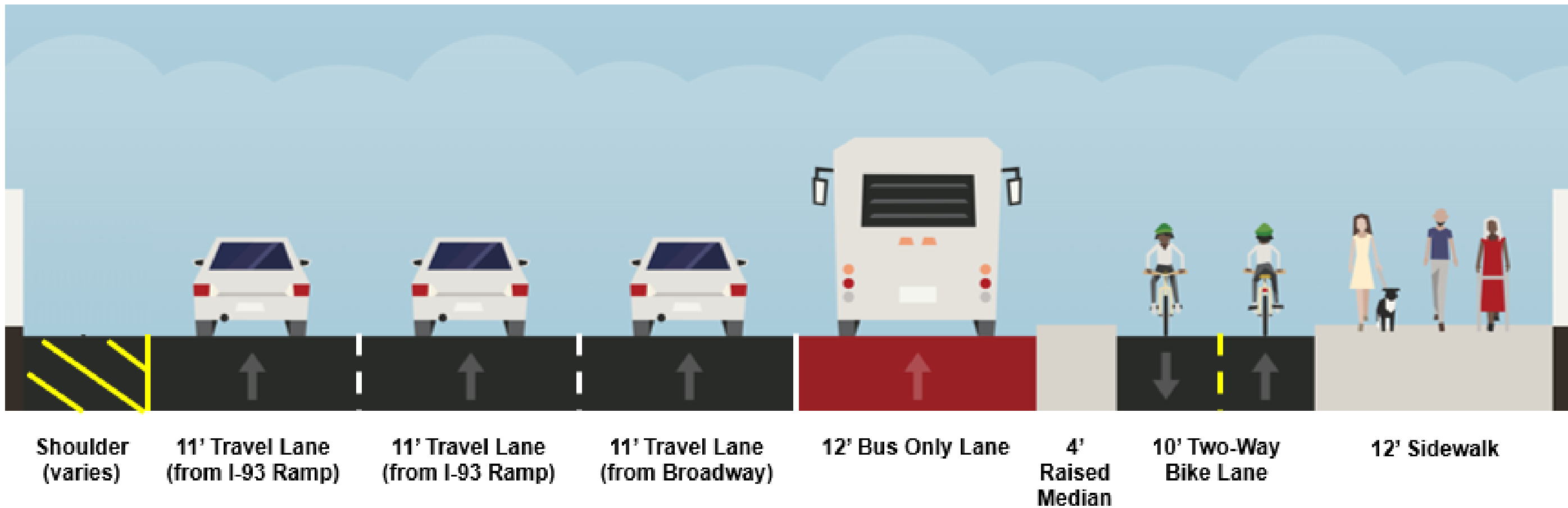
Maffa Way Bridge Phase 2 - 2025



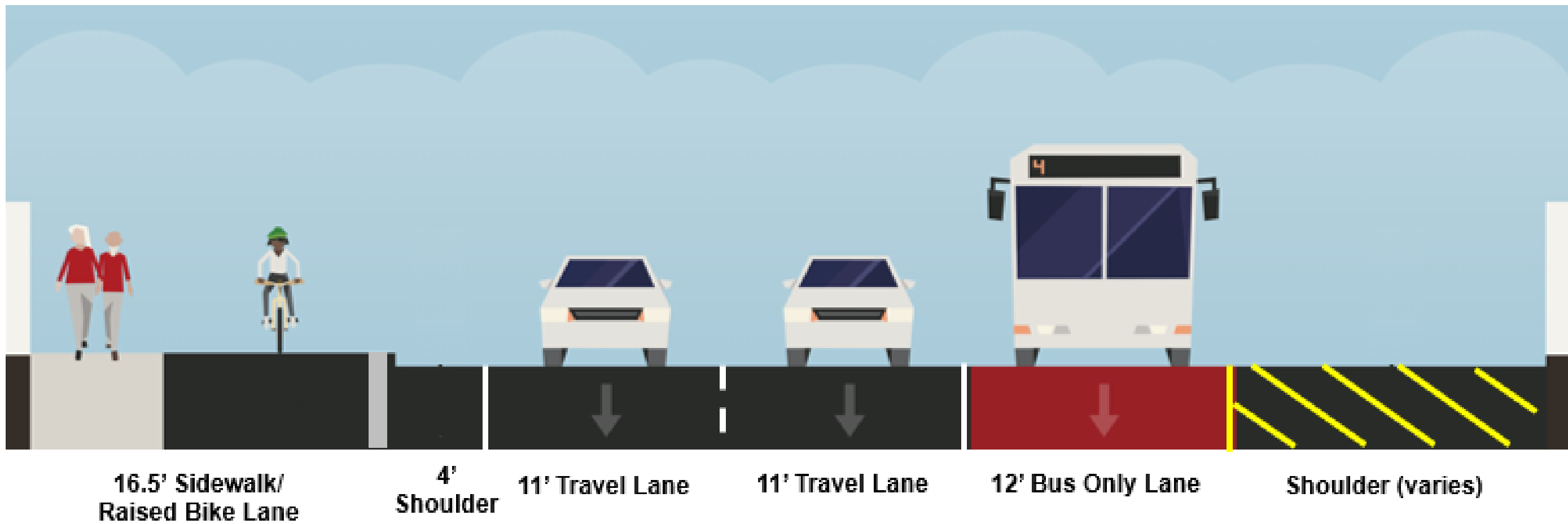
Mystic Ave Bridge Phase 2 - 2025



Maffa Way Bridge Final Condition - 2026



Mystic Ave Bridge Final Condition - 2026



Managing Construction Impacts

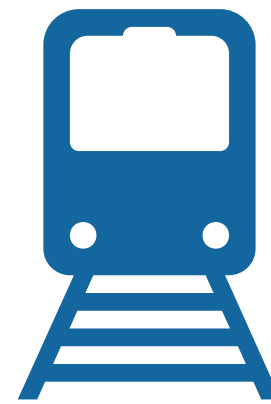
- Work hours
 - Standard 7am-3pm w/ exception of certain shutdown activities
 - 9-Day Shutdowns in 2024 & 2025 will involve work 24 Hrs/Day
 - Incentives/Disincentives for Design-Build Team to ensure compliance with contract timelines
- Traffic
 - Potential traffic signal changes along impacted alternate routes
 - Portable changeable message signs
 - Dedicated construction truck route for incoming/outgoing materials
 - Dedicated off-site contractor parking under I-93



Managing Construction Impacts

- Noise
 - Monitor noise during construction activities and comply with local ordinances
 - Implement specific demolition methods to avoid “hammering” of concrete infrastructure as much as possible
- Dust
 - Streets in project vicinity will be swept after major work activities that track any soil into adjacent roadways
 - Stockpiles will either be hydroseeded or watered down if present for a long period of time
 - Calcium chloride and/or water will be utilized periodically throughout the site to mitigate dust
- Pest Control
 - Waltham Pest Services will be utilized throughout the course of the project
 - Bait stations will be set along the perimeter of the project and maintained monthly to ensure effectiveness





**What are the
MBTA
shutdown
impacts?**

Orange Line Shutdown #1 – June 2024

- 9-day outage of MBTA Orange Line
 - Limits to be determined
 - Shuttle busses to be provided
- Follow best practices from the 2022 Orange Line shutdown for bicyclists and pedestrians
- Public Information Meeting to be held in May
 - Details of Orange Line shutdown
 - Details of plans for bicyclists and pedestrians
 - Outreach plan





**How will we
keep you
informed?**

Continued Public Outreach

- Eblasts and website updates to be provided ahead of construction activities
- Outreach to bicycle and pedestrian stakeholders prior to the Orange Line shutdown.
- Future Public Meetings and Stakeholder Briefings



How to reach us?

- Submit comments or questions to
MassDOTMaffaMystic@dot.state.ma.us
- Project hotline
781 999-0261
Hotline is answered Monday through Friday between the hours of 7:00am and 4:00pm
All calls received after hours will be returned the next business day.
- Visit the project website to learn more about the project or register to receive project email updates
<https://www.mass.gov/info-details/about-the-maffa-waymystic-avenue-bridge-superstructure-replacements>



Scan the QR Code to visit the project website



Questions and discussion



Thank You

Maffa Way & Mystic Ave. over MBTA Orange Line and Commuter Rail

Bridge Nos. B-16-067 and B-16-068=S-17-02

Central Branch Somerville Public Library | January 31, 2024 | 6:00 PM

Project File No. 607670 – Contract No. 119537