



# Revere Beach Parkway (Rt 16) over Broadway (Rt 107) Bridge Replacement Project

## *Public Information Meeting*

March 7, 2024

Revere City Hall

Project File No. 612184





# Public meeting notes and procedures:

## **Notification of video recording**

- This public meeting will be recorded. The Massachusetts Department of Transportation may choose to retain and distribute the video, images, audio, and/or chat transcript.
- All parts of this meeting are considered public record.
- By continuing attendance with this public meeting, you are consenting to participate in a recorded event.

## **Important notes**

- The meeting will be open to questions and answers at the end of the presentation.
- Your feedback is important.

**Unauthorized use or distribution of this material is prohibited  
without prior consent of the MassDOT Communications Department**

## Notice of MassDOT's policy on diversity and civil rights:

- All MassDOT activities, including public meetings, are free of discrimination.
- MassDOT complies with all federal and state civil rights requirements preventing discrimination based on sex, race, color, ancestry, national origin (limited English proficiency), religion, creed, gender, sexual orientation, gender identity or expression, or veteran's status.
- We welcome the diversity from across our entire service area. If you have any questions or concerns, please visit <https://www.mass.gov/nondiscrimination-in-transportation-program> to reach the Office of Diversity and Civil Rights.

**All questions and comments are welcome and appreciated, however we do request that you refrain from any disrespectful comments.**

# Attendance Sheet and Handouts

- Sign-in Sheet
  - located at the back of the room
- Handouts
  - Project Details
  - Next to the Sign-in Sheet



## Presentation Participants

- **MassDOT Project Manager**
  - Kristine Chestna, PE
- **MassDOT D4 ADA Compliance Engineer**
  - Dan Fleury
- **MassDOT State ROW**
  - Michael Ruderman
- **MassDOT Legislative Affairs**
  - Daniel Fielding
- **Howard Stein Hudson (HSH)**
  - Paul Berthiaume, PE, Manager of Structural Engineering
  - Bridget Myers, PE, Manager of Roadway Design
  - Jessica Lizza, PE, Manager of Traffic Engineering
- **Translation Services**
  - Susana Carella



## How will we keep you informed?

- Two-way communication between the project team & the community
  - Email: [MassDOTProjectManagement@dot.state.ma.us](mailto:MassDOTProjectManagement@dot.state.ma.us)
  - MassDOT website: <https://www.mass.gov/event/>



- Project website:  
[https://public.govdelivery.com/accounts/MADOT/subscriber/new?topic\\_id=MADOT\\_237](https://public.govdelivery.com/accounts/MADOT/subscriber/new?topic_id=MADOT_237)
  - Public can subscribe to receive project updates and advisories on the project website
- Here to solicit your input early in our design
- We will return this Fall to present more detailed design



## Funding



- Federal Highway Administration and MassDOT Funding
- Construction Completion within three construction seasons of advertisement



# Agenda

1. Project Location
2. Project Initiation
3. Existing Conditions
4. Project Goals
5. Alternatives Analysis
6. Construction Approach
7. Affects to Road User
8. Next Steps
9. Questions & Discussion





# Project Location







**Why was this  
project  
initiated?**



# Existing Conditions - Bridge

Deck Underside with exposed and deteriorated rebar



Superstructure frame concrete and steel deterioration





## Existing Bridge

- Built in 1930, widened in 1958
- Local connections
- Regional connections
- Substandard vertical clearance



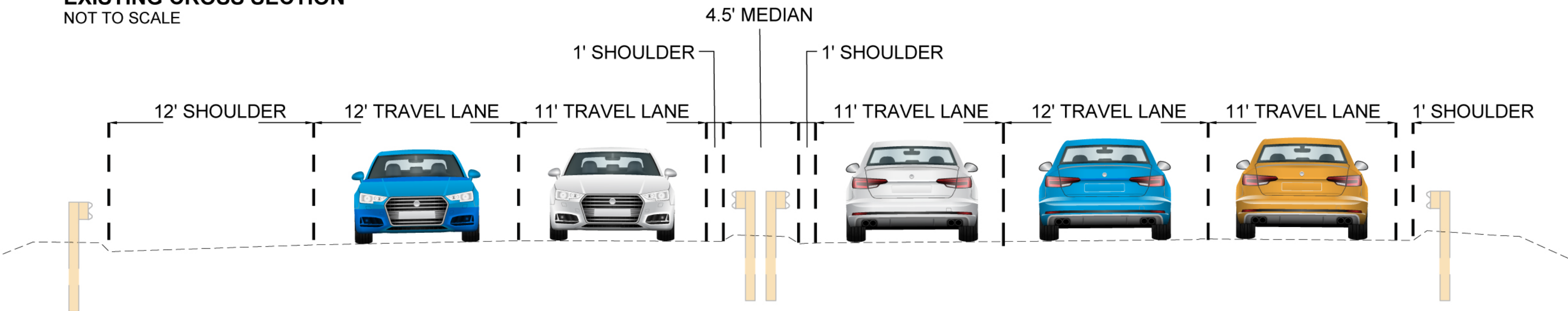


## Existing Roadway – Revere Beach Parkway (Route 16)

- Average Daily Traffic
  - 23,000 vehicles per day eastbound (EB)
  - 15,500 vehicles per day westbound (WB)

### EXISTING CROSS SECTION

NOT TO SCALE



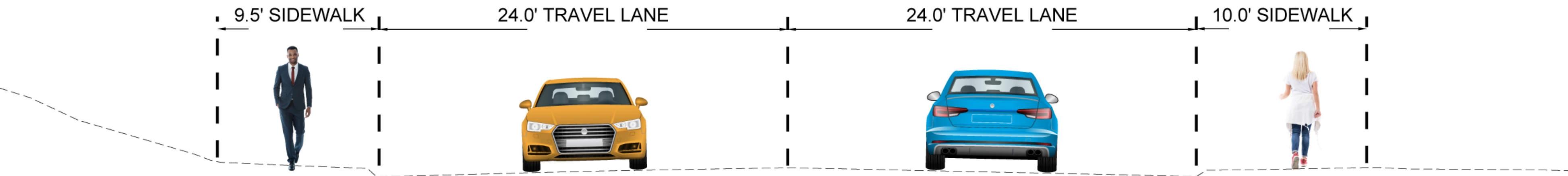


## Existing Roadway – Broadway (Route 107)

- Average Daily Traffic
  - 9,700 vehicles per day northbound (NB)
  - 9,500 vehicles per day southbound (SB)

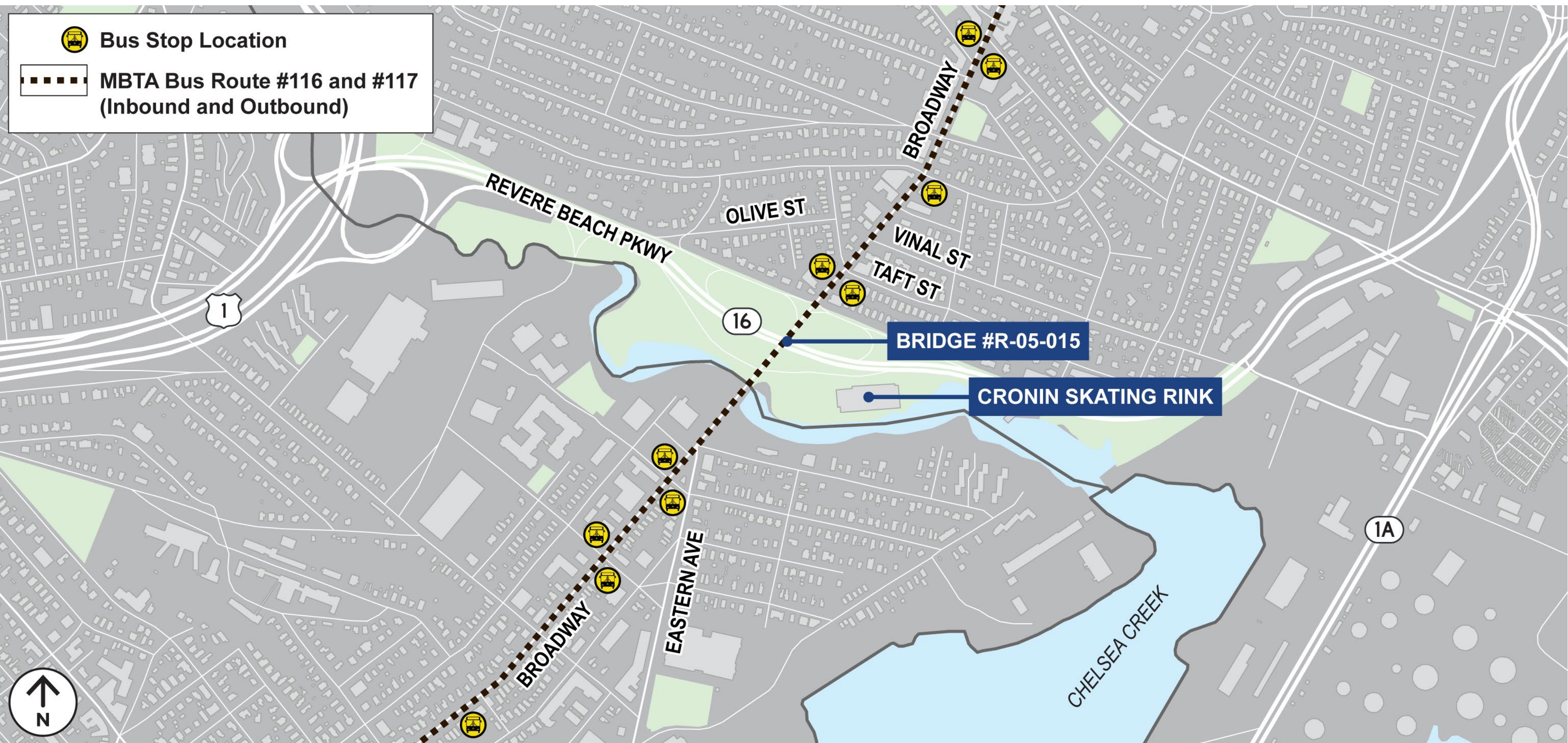
### EXISTING CROSS SECTION

NOT TO SCALE



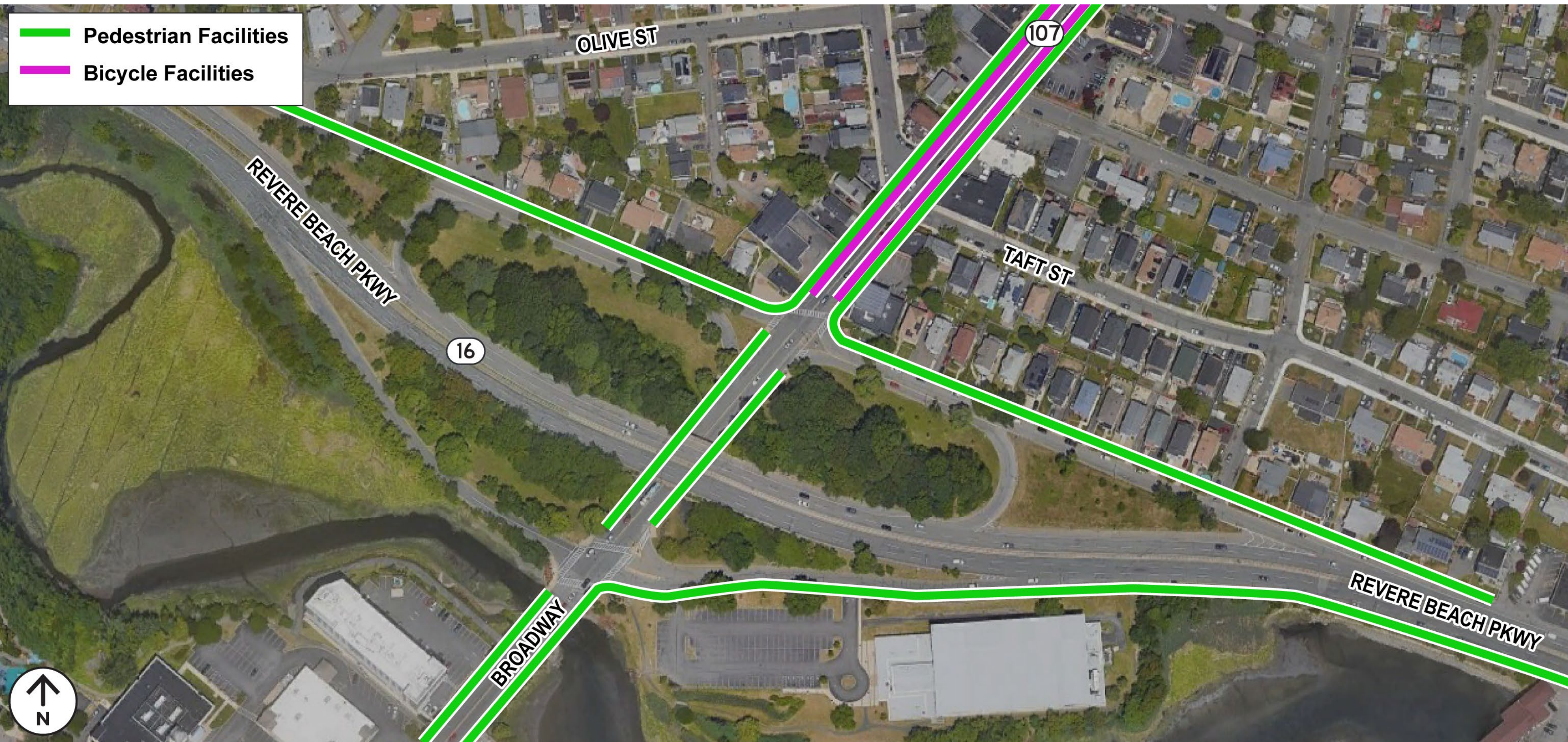


# Existing Transit Accommodations





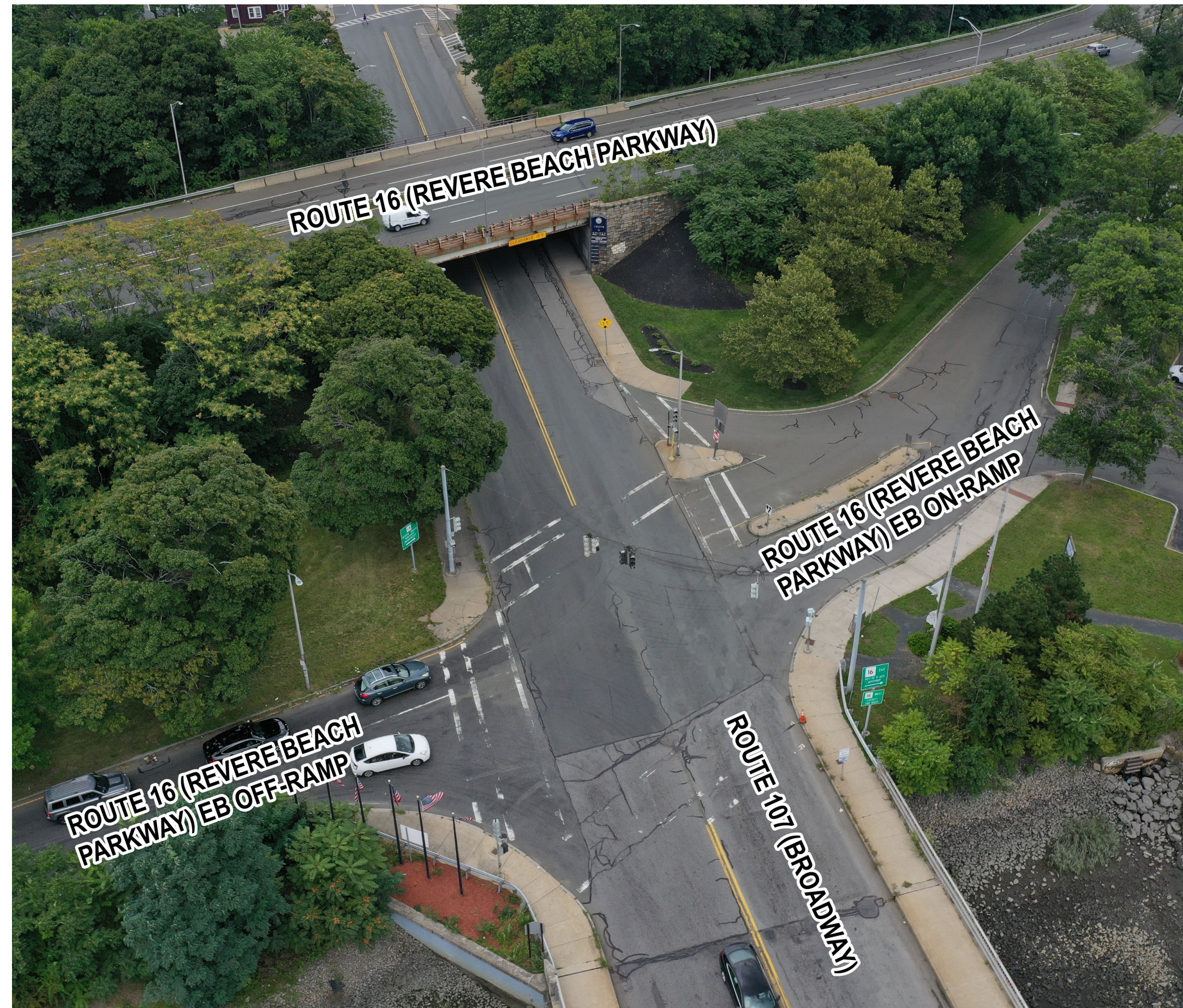
# Existing Pedestrian/Bicycle Accommodations





## Existing Revere Beach Parkway EB Ramp at Broadway Intersection

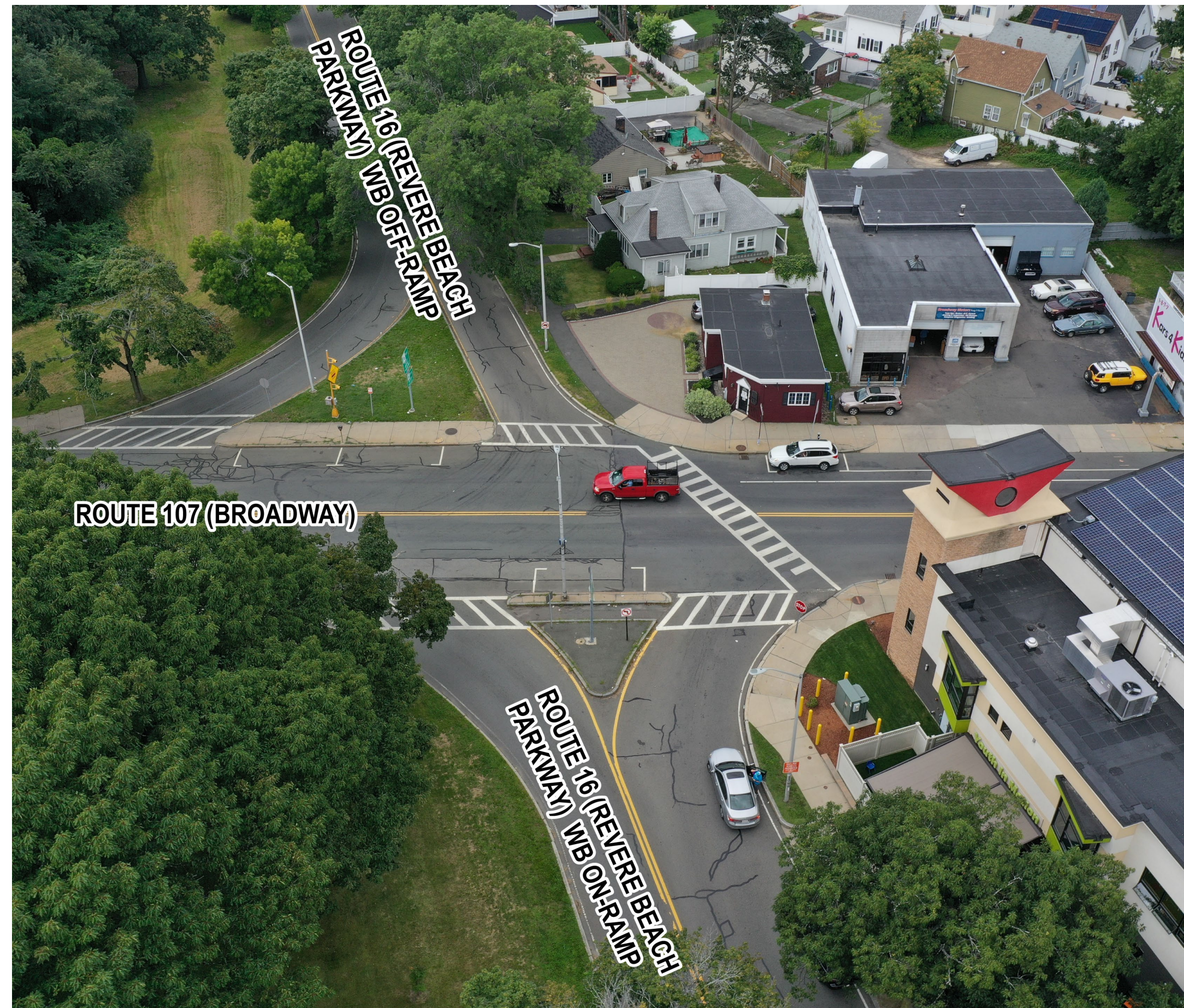
- Signalized intersection with outdated equipment
- Faded pavement markings
- Poor pavement conditions
- No bicycle accommodations





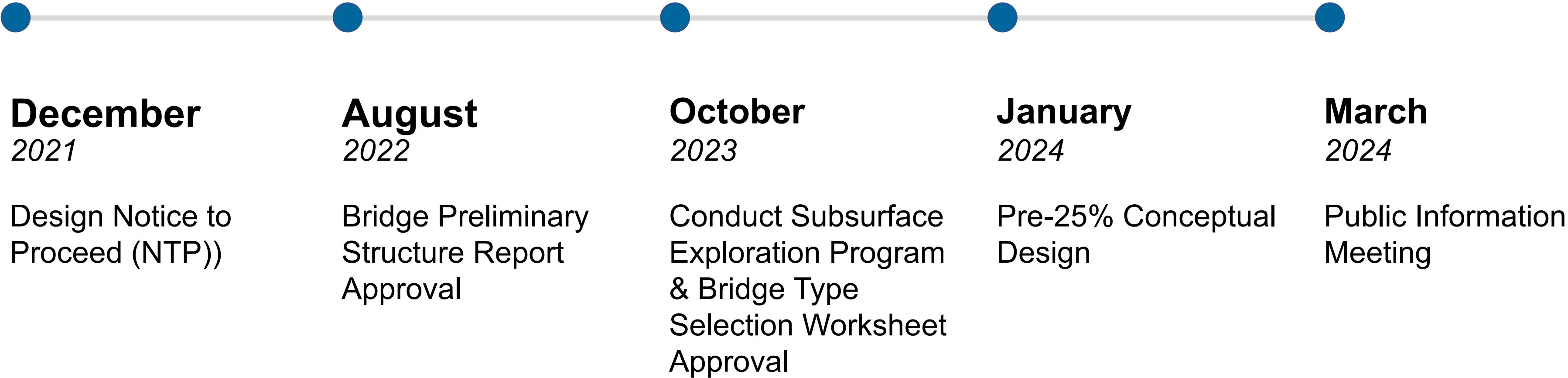
## Existing Revere Beach Parkway WB Ramp at Broadway Intersection

- Stop controlled (right-in, right-out)
- Parking along Broadway within intersection
- No bicycle accommodations





# How did we get here?







**What do we  
want to  
accomplish?**



## Project Goals

- Replace bridge
- Maintain bridge historic character
- Improve safety at intersections
- Provide transit priority along Broadway
- Enhance multimodal access along Broadway
- Minimize impacts to roadway users during construction





## Project Considerations

- MBTA's Better Bus Project
  - Increase bus service along Broadway
- MassDOT Statewide Pedestrian and Bicycle Plans
- MassDOT Healthy Transportation Policy Directives
- Project Connections





## Project Scope – Revere Beach Parkway and Bridge Replacement

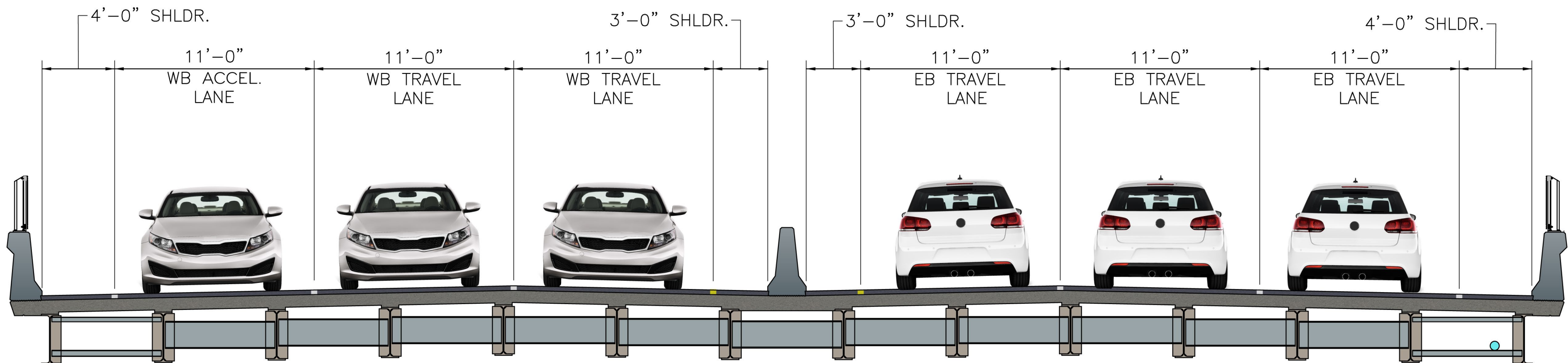
- Complete Removal and Replacement
- Increase Vertical Clearance
- Aesthetic Treatment for Historic Character





## Project Scope – Revere Beach Parkway and Bridge Replacement (cont.)

- Cross Section Changes: WB shoulder becomes acceleration lane
- Tie into existing Route 16 cross-section at project limits





## Project Scope – Broadway

- Project Limits: Revere/Chelsea line to the Taft St intersection
- Sidewalk reconstruction
- Add bicycle accommodations
- Include bus priority measures where feasible





## Project Scope – Ramp Intersections

- Revere Beach Parkway EB Ramp at Broadway Intersection
  - Signalized intersection improvements and upgrades
  - Multimodal accommodations
  - ADA compliant curb ramps and crossings
- Revere Beach Parkway WB Ramp at Broadway Intersection
  - Multimodal accommodations
  - ADA compliant curb ramps and crossings





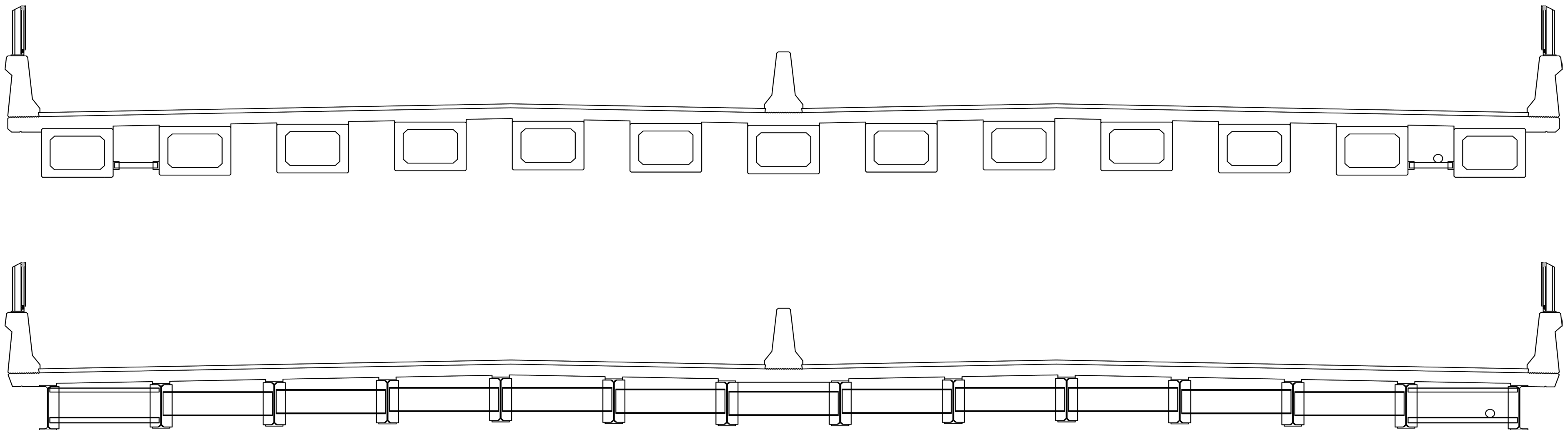


**What  
alternatives  
were  
considered?**



## Bridge Replacement

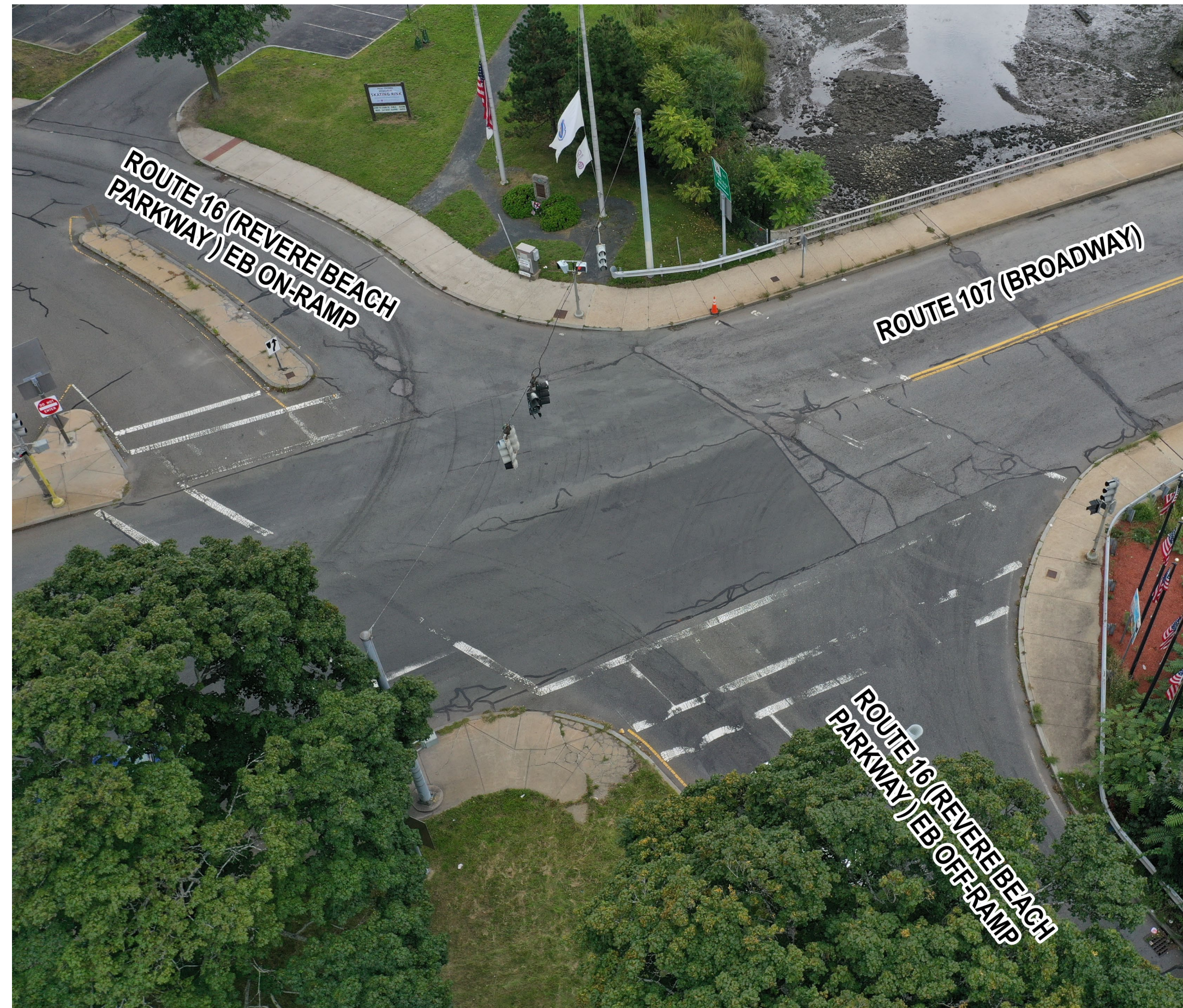
- Considered various steel and concrete beam options





## Intersection Alternatives Evaluation

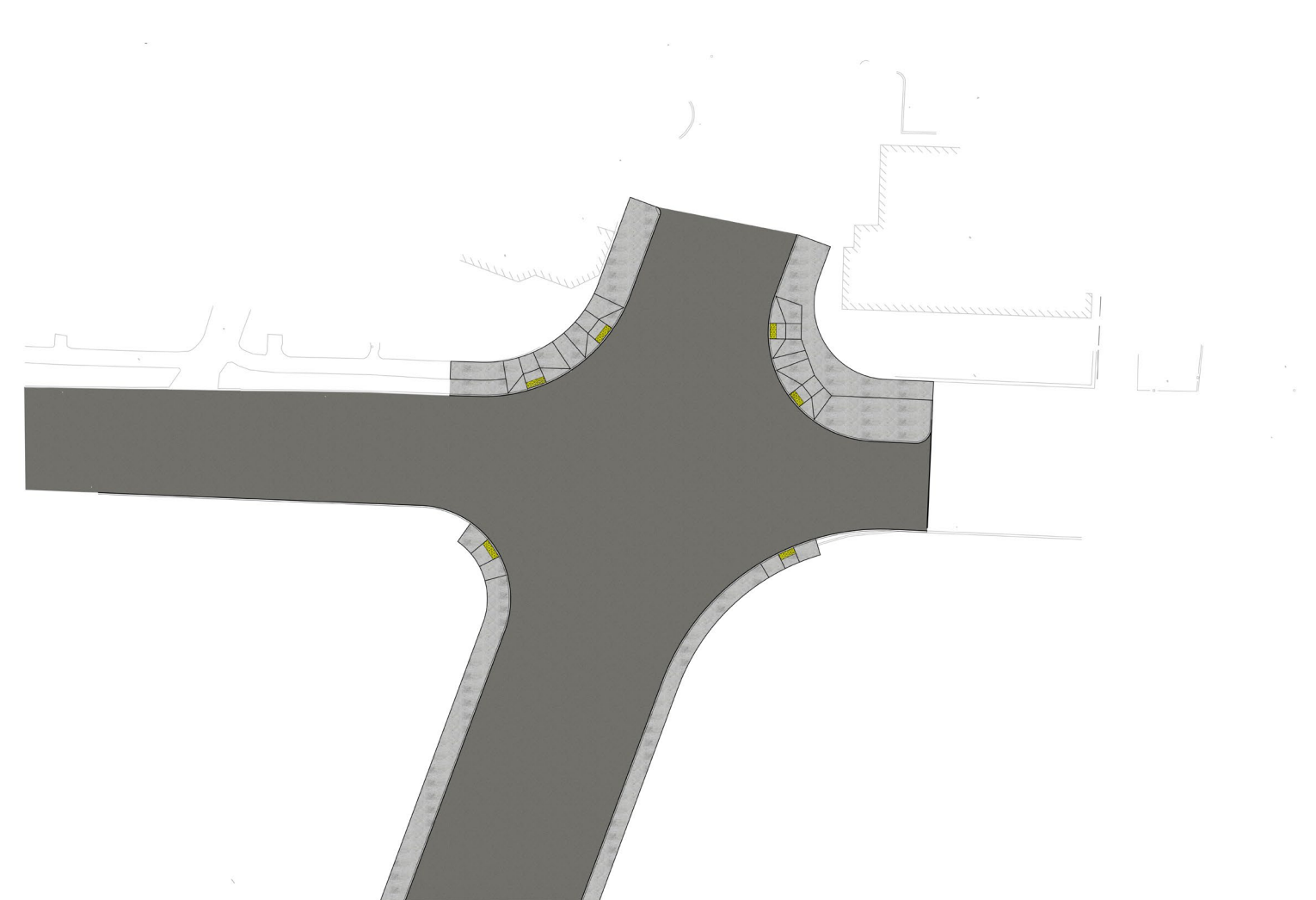
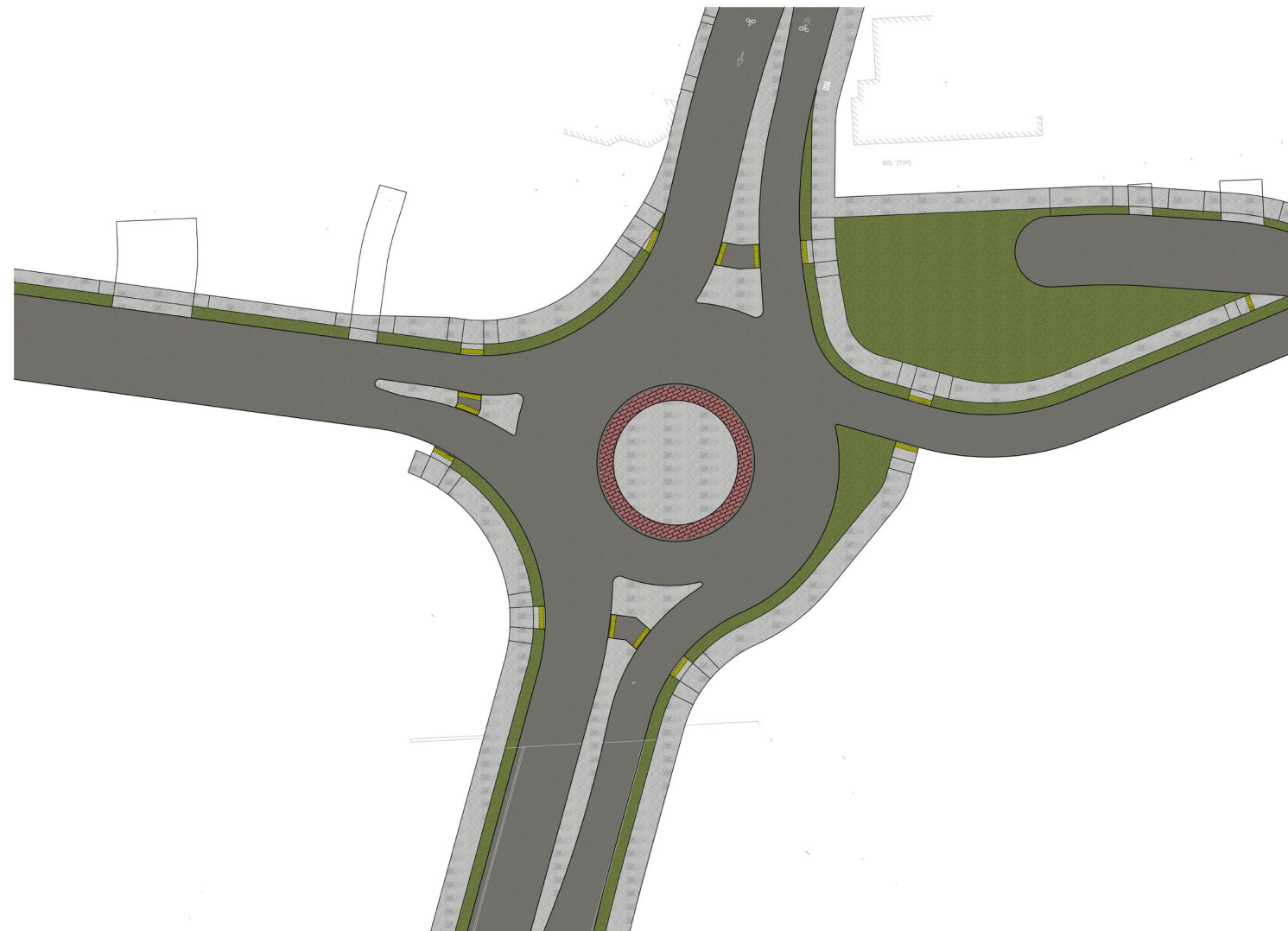
- Evaluated control strategies based on:
  - Safety, cost, environmental impact, traffic operations, multimodal accommodations
- Revere Beach Parkway EB Ramp at Broadway Intersection
  - Signalized Intersection
    - Retains traffic operations and safety
    - Alternative control strategies would impact ROW and adjacent bridges





## Intersection Alternatives Evaluation (cont.)

- Revere Beach Parkway WB Ramp Intersection
  - Evaluated Unsignalized, Signalized, and Roundabout Intersection Alternatives
    - Unsignalized Intersection
      - Based on benefit-to-cost ratio and limited environmental/ROW impacts
      - No existing significant safety concern
    - Signalized Intersection
      - Cost outweighs benefits
    - Roundabout
      - Sig





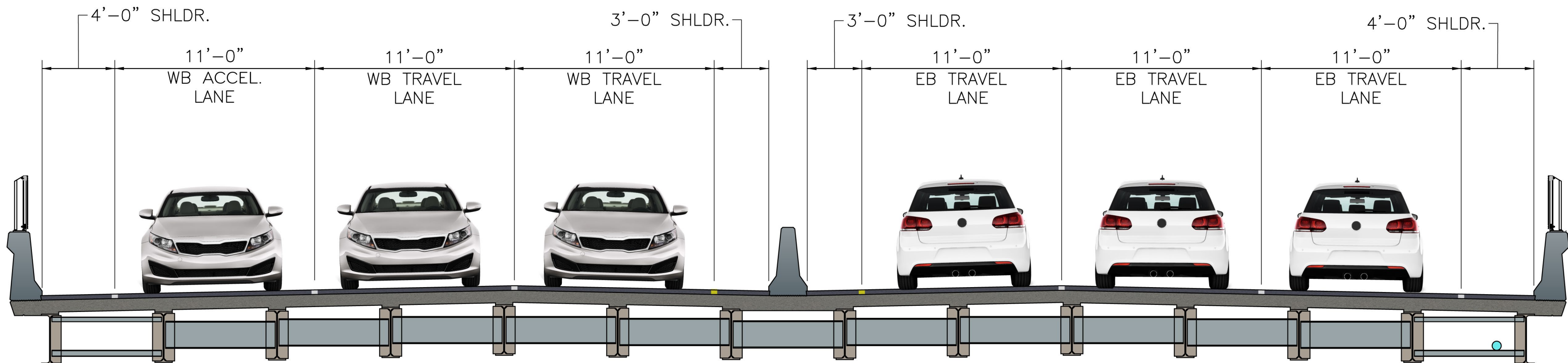


**What is the  
preferred  
alternative?**



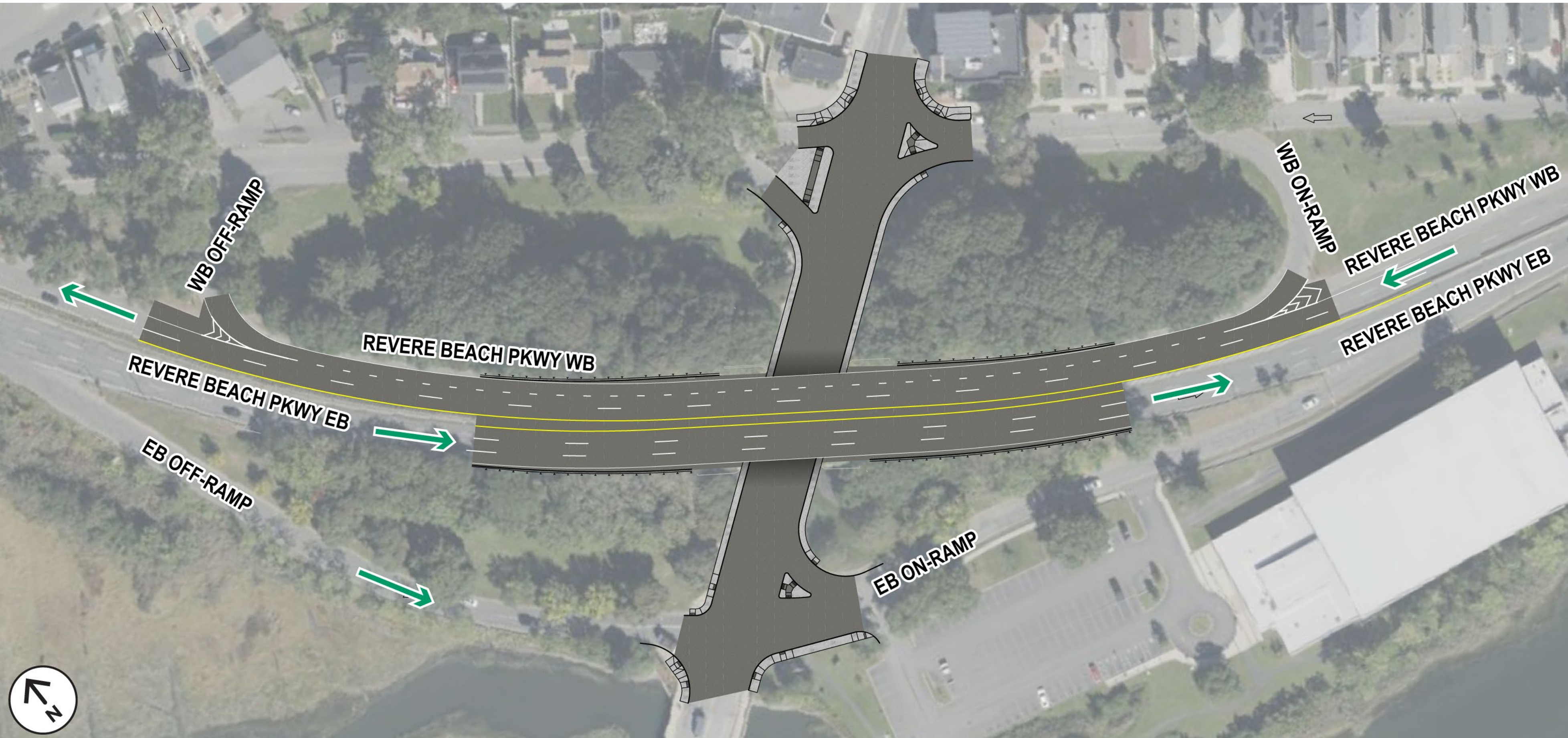
## Preferred Bridge Replacement

- Simple span steel stringer bridge with reinforced concrete deck





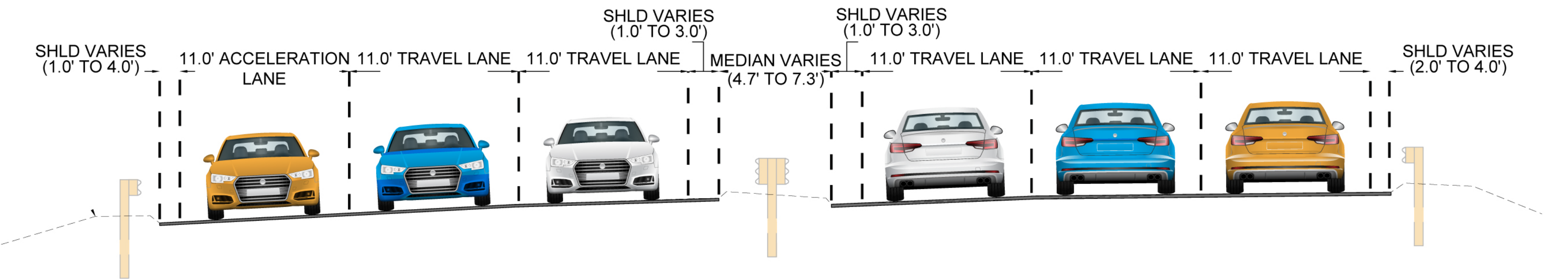
# Revere Beach Parkway Design





# Bridge Approach Cross-Section

**PROPOSED CROSS SECTION - BRIDGE APPROACH**  
NOT TO SCALE





## Broadway Design Considerations

- Currently evaluating Broadway design
- Broadway width limited by bridge length
- Accommodations for pedestrians, bicyclists, and transit
- Maintain traffic operations
- Tying into other projects along Broadway



## Coordination with Other Projects

- MBTA Bus System Infrastructure Improvements On-Call Bus Lanes/Transit

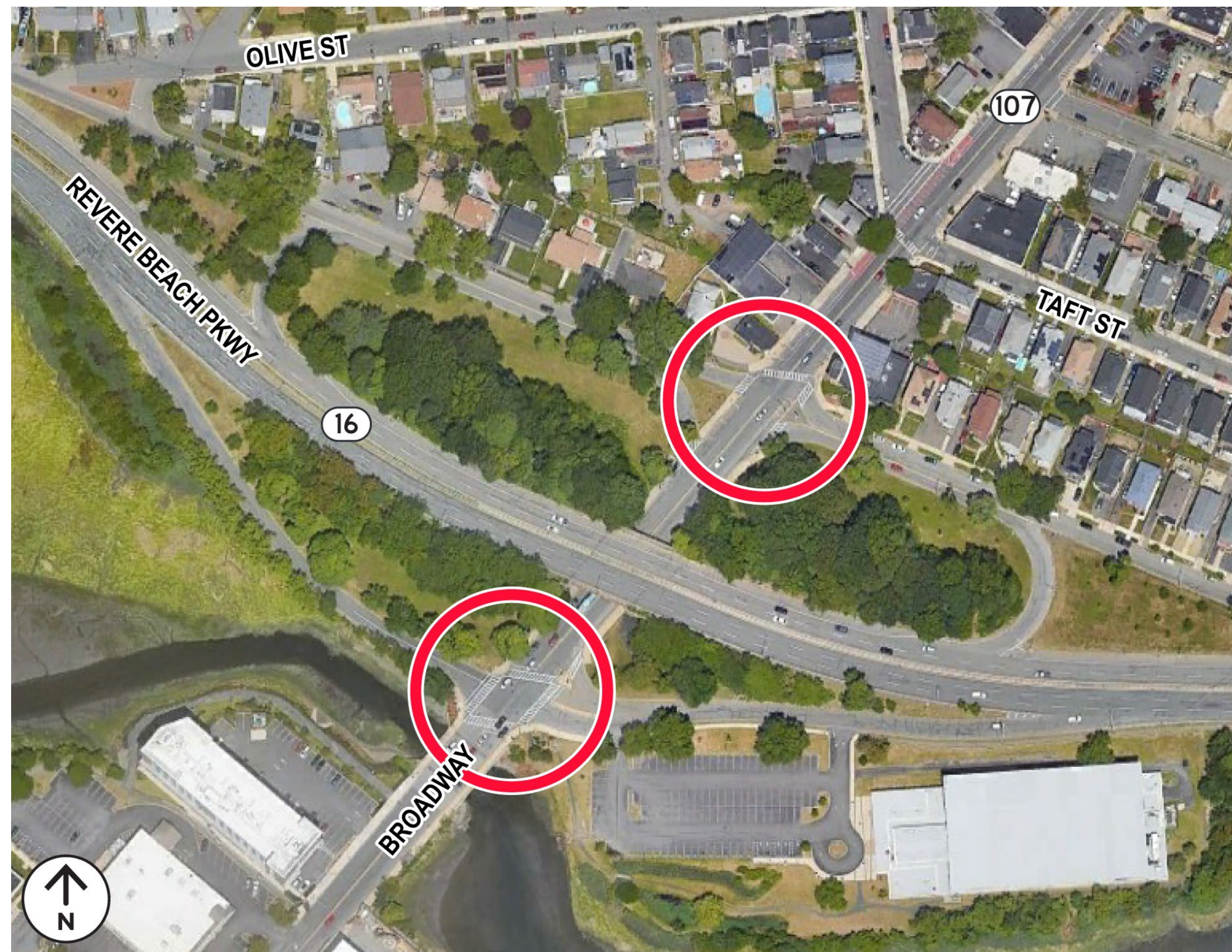
### Priority Corridors (Permit Issued for Construction)

- Broadway Southbound Bus Lane
- Chelsea Broadway (Final Design Submitted)
  - Reconstruction of Broadway from City Hall Avenue to the Revere City Line
  - Traffic signal upgrades, dedicated bike lane along Broadway, upgrading existing sidewalk/bus stops



## Broadway - Ramp Intersections

- Revere Beach Parkway EB Ramp at Broadway
  - Signalized Intersection
- Revere Beach Parkway WB Ramp at Broadway
  - Stop Controlled Intersection







**What is the  
construction  
approach?**



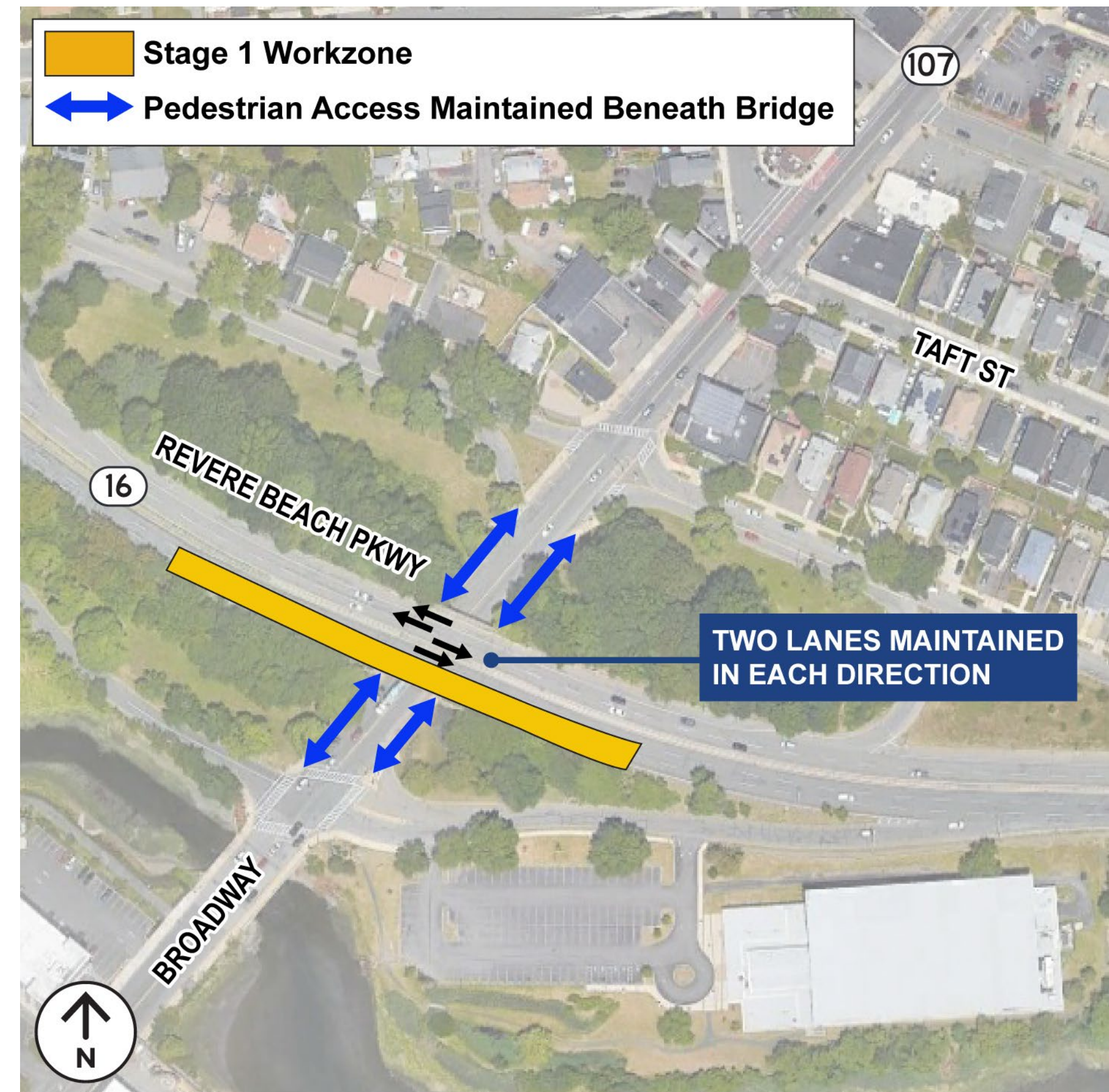
## Proposed Construction Approach

- Design, bid, build contract procurement
- The bridge and Revere Beach Parkway construction will be completed in three stages
- Approximately one year of construction per stage for a total of three years
- Broadway closures for periodic night work only (9:00 p.m. - 5:00 a.m.)



## Construction Stage 1

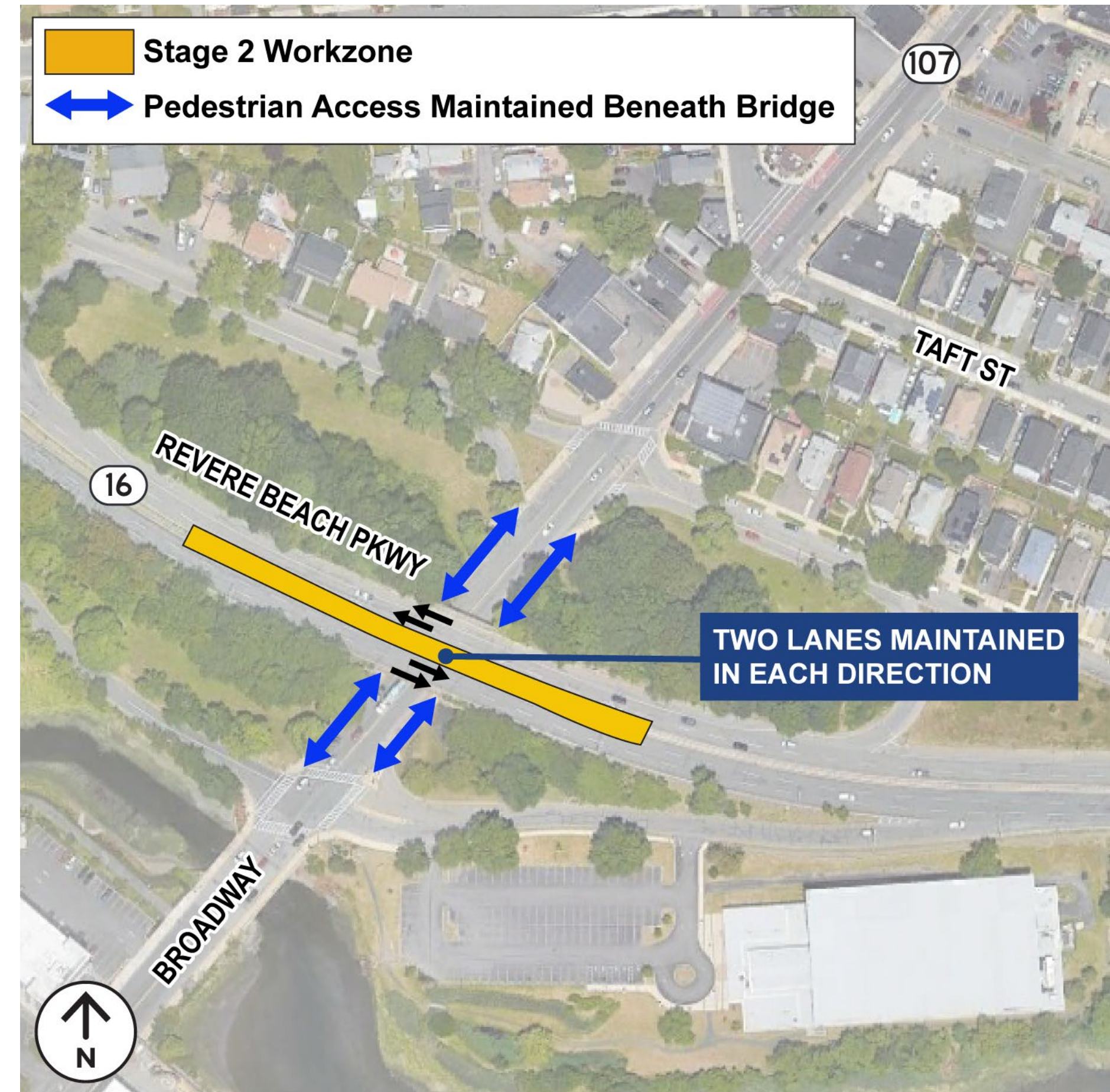
- Estimated Duration: 1 year
- Workzone on Revere Beach Parkway Eastbound exterior lane
- Maintain two-lanes Eastbound and Westbound
- No impacts to Broadway for all road users
- Ramp Access Maintained





## Construction Stage 2

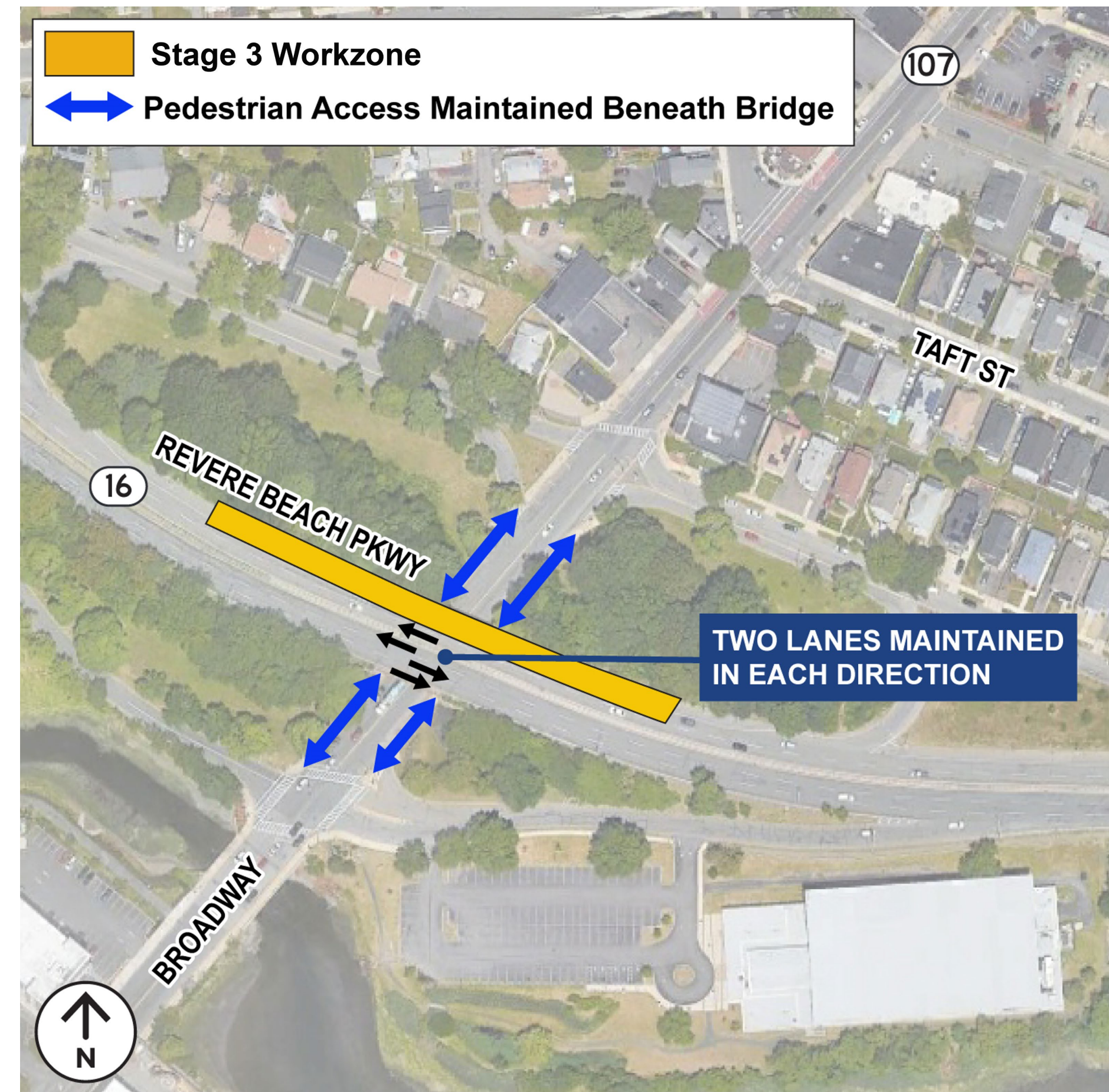
- Estimated Duration: 1 year
- Workzone on Revere Beach Parkway Eastbound/Westbound interior lanes
- Maintain two-lanes Eastbound and Westbound
- No impacts to Broadway for all road users
- Ramp Access Maintained





## Construction Stage 3

- Estimated Duration: 1 year
- Workzone on Revere Beach Parkway Westbound exterior lane
- Maintain two-lanes Eastbound and Westbound
- No impacts to Broadway for all road users
- Ramp Access Maintained





## Temporary Night Closures – Broadway

- Periodic Night Work Closures (9:00 p.m. to 5:00 a.m.)
- Required for specific activities (demolition and beam placement)







**How will the  
road user be  
affected?**



## Road User Impacts

- Maintain two lanes in each direction on Revere Beach Parkway at all times
- Temporary crossovers
- Broadway detours (periodic night work only)
- Abutter access maintained at all times







**What are the  
environmental,  
cultural  
resource, and  
community  
impacts?**



# Environmental, Cultural Resource & Community Impacts

- Required Permitting
  - Historic Section 106 / Chapter 254
  - Hazardous Materials Research
  - NEPA
  - Water Quality Data Form
  - Coastal Zone Management Review

NPS Form 10-900-a  
(8-86)

OMB Approval No. 1024-0018

United States Department of the Interior  
National Park Service

**National Register of Historic Places  
Continuation Sheet**

Section number 7 Page 7

Revere Beach Parkway  
Metropolitan Park System of Greater Boston MPS  
Middlesex and Suffolk Counties, MA







**What are  
our next  
steps?**



# Our Next Steps



25% Design Submittal  
March 2024



Design Public Hearing  
Fall 2024



File Environmental Permits  
Fall 2024



Final Design  
Spring 2025



Advertise Construction Contract  
Winter 2026





**How will we  
keep you  
informed?**



## How will we keep you informed?

- Two-way communication between the project team & the community
  - Email: [MassDOTProjectManagement@dot.state.ma.us](mailto:MassDOTProjectManagement@dot.state.ma.us)
  - MassDOT website: <https://www.mass.gov/event/>



- Project website:  
[https://public.govdelivery.com/accounts/MADOT/subscriber/new?topic\\_id=MADOT\\_237](https://public.govdelivery.com/accounts/MADOT/subscriber/new?topic_id=MADOT_237)
  - Public can subscribe to receive project updates and advisories on the project website





**Questions and  
discussion**



## Questions and Discussion

- Raise your hand to be called on for questions
- Please state your name and connection to the project before your question





# *Thank You*

*Revere Beach Parkway (Rt 16) over  
Broadway (Rt 107)*

*Bridge Replacement Project*

Revere City Hall | March 7, 2024 | 7:00 PM

Project File No. 612184

MassDOTProjectManagement@dot.state.ma.us