



## Route 2 Corridor Study Status Update

*Thank you for joining us.*

*This meeting will begin shortly.*





# Route 2 Corridor Study Status Update

*Public Information Meeting*

Zoom | February 13 & 20, 2024 | 6:00 PM



# Zoom meeting controls



- Ask a question and share comments



- Drop down menu to check microphone and speakers



- Raise your hand - \*9 for users dialing in and Alt + Y to raise your hand



- Use the View button in the upper right-hand corner to adjust the meeting view settings to your preference

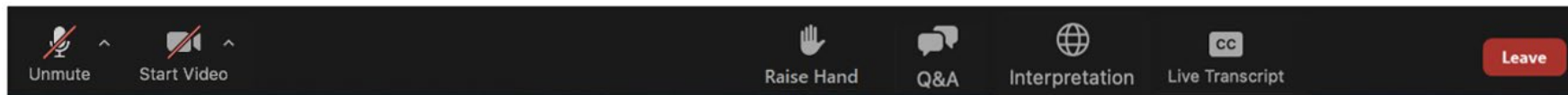


Live Transcript

- Closed captioning automatically generated by Zoom

If you have trouble with the meeting technology during the presentation, please call:

617-680-5787



# Public meeting notes and procedures

## Notification

- While this virtual public meeting is not being recorded, the Massachusetts Department of Transportation may choose to retain and distribute images, audio, and/or the Q/A transcript.
- All parts of this meeting are considered public record.
- If you are not comfortable being recorded, please refrain from utilizing the Q/A feature, turn off your camera, and keep your microphone muted, or you may choose to excuse yourself from the meeting.

## Important notes

- Your microphone and webcam are automatically disabled upon entering the meeting
- The meeting will be open to questions and answers at the end of the formal presentation.
- Please take time to respond to our survey at the end of the presentation. Your feedback is important.

**All questions and comments are welcome and appreciated, however we do request that you refrain from any disrespectful comments.**

## Notice of MassDOT's policy on diversity and civil rights

- All MassDOT activities, including public meetings, are free of discrimination.
- MassDOT complies with all federal and state civil rights requirements preventing discrimination based on sex, race, color, ancestry, national origin (limited English proficiency), religion, creed, gender, sexual orientation, gender identity or expression, or veteran's status.
- We welcome the diversity from across our entire service area. If you have any questions or concerns, please visit <https://www.mass.gov/nondiscrimination-in-transportation-program> to reach the Office of Diversity and Civil Rights.

**Thank you for joining our meeting. We appreciate your participation!**

## How did we get here?

- Recurring congestion along Route 2 was continuing to worsen Pre-COVID
- Numerous high crash locations along the corridor
- Limited multi-modal accommodation
- Initial discussions came from stakeholders in North Central Massachusetts
- Those discussions led to the need to look at segments further east as well
- Study initiated as a result of request from legislators and other members of North Central Route 2 Transportation Task Force

## Where are we now?

- Traffic analyses of current and projected future traffic operations completed
- Numerous conceptual level improvement alternatives developed
- Final draft of Study is being reviewed and made accessible
- **NO SPECIFIC PROJECTS INITIATED/FUNDED CURRENTLY – CONCEPTUAL LEVEL PLANNING STUDY ONLY**
- Initiate Legislative, Municipal and Public Outreach
- Need to solicit feedback on alternatives and prioritize improvements

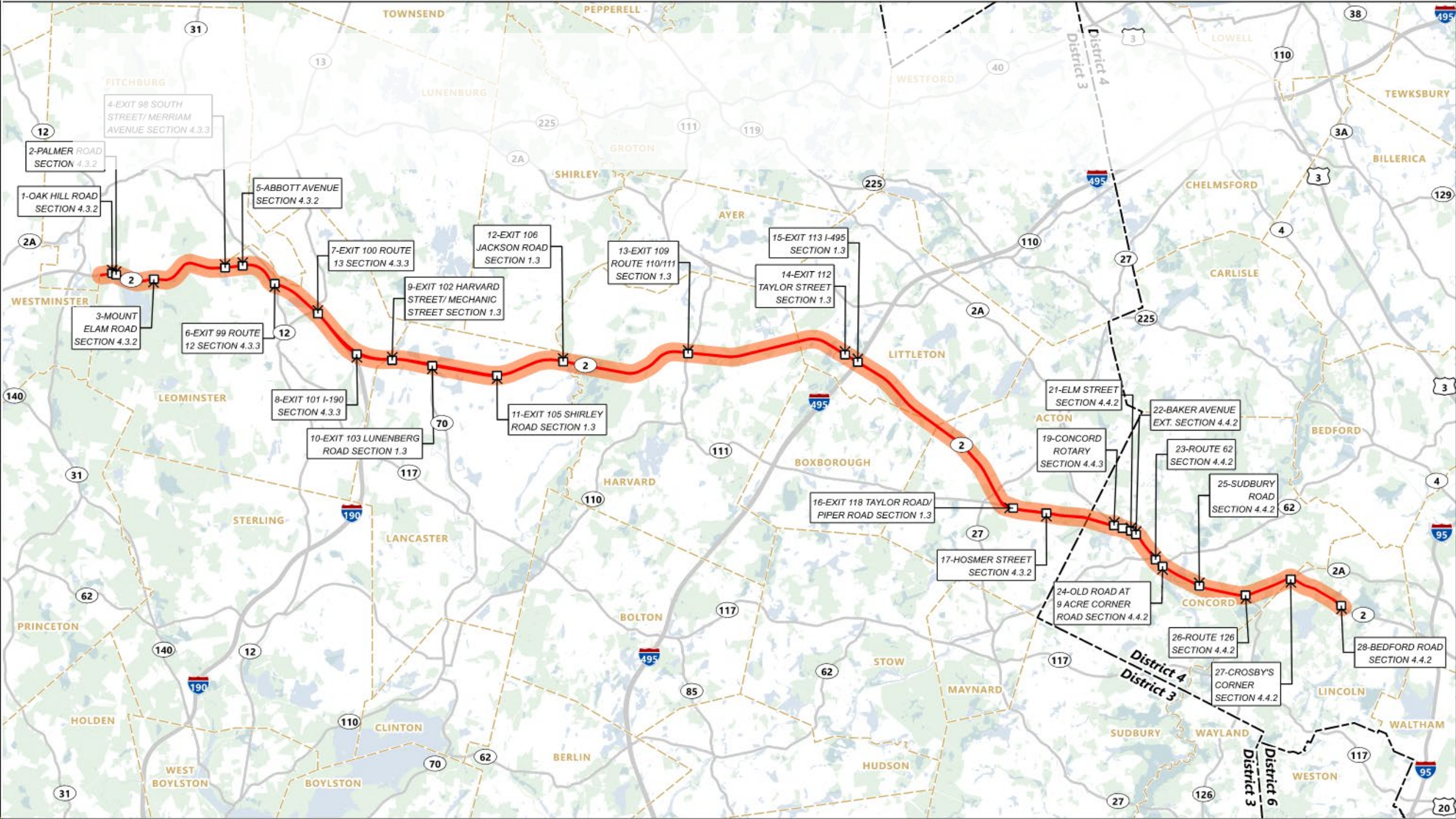


## Agenda

- 01 Study Overview & Scope
- 02 Western Area Alternatives
- 03 Concord Rotary Update
- 04 Eastern Area Alternatives
- 05 Next Steps







## Study Scope

- Establish Existing Conditions (Pre-COVID - 2019)
  - Volume Data
  - Safety Data, Analysis and Road Safety Audits (RSAs)
  - Operational Analysis
- COVID Influences
  - Route 2 has rebounded
  - Modified daily and hourly distribution
- Projected Future Conditions (2040)
- Identified Existing and Projected Issues/Concerns
- Developed Concept Level Improvement Alternatives
- **Project Goals**
  - **Improve Traffic Flow and Safety (for all users) while minimizing impacts (community and natural resources)**



# Overall Corridor Existing and Future Conditions

- Diverse Corridor
  - Eastern Study Area governed by signals
  - Western Study Area reflects limited access roadway
- Significant Bottlenecks
  - Tracey's Corner; Concord Rotary; I-190 Interchange
- Traffic Demand exceeds Capacity
  - During many hours of the day ("lose the road")
- Significant Crash Experience
  - Many locations exceed statewide averages; HSIP locations include Tracey's Corner, Taylor/Piper & Baker Avenue Extension
- Sensitive Environmental and Natural Resource Areas Along Length of Corridor
- Limited Multi-modal Accommodation
- Projected Future 2040 Conditions
  - Background growth and site-specific development, including Devens

## Western Area Alternatives Considered

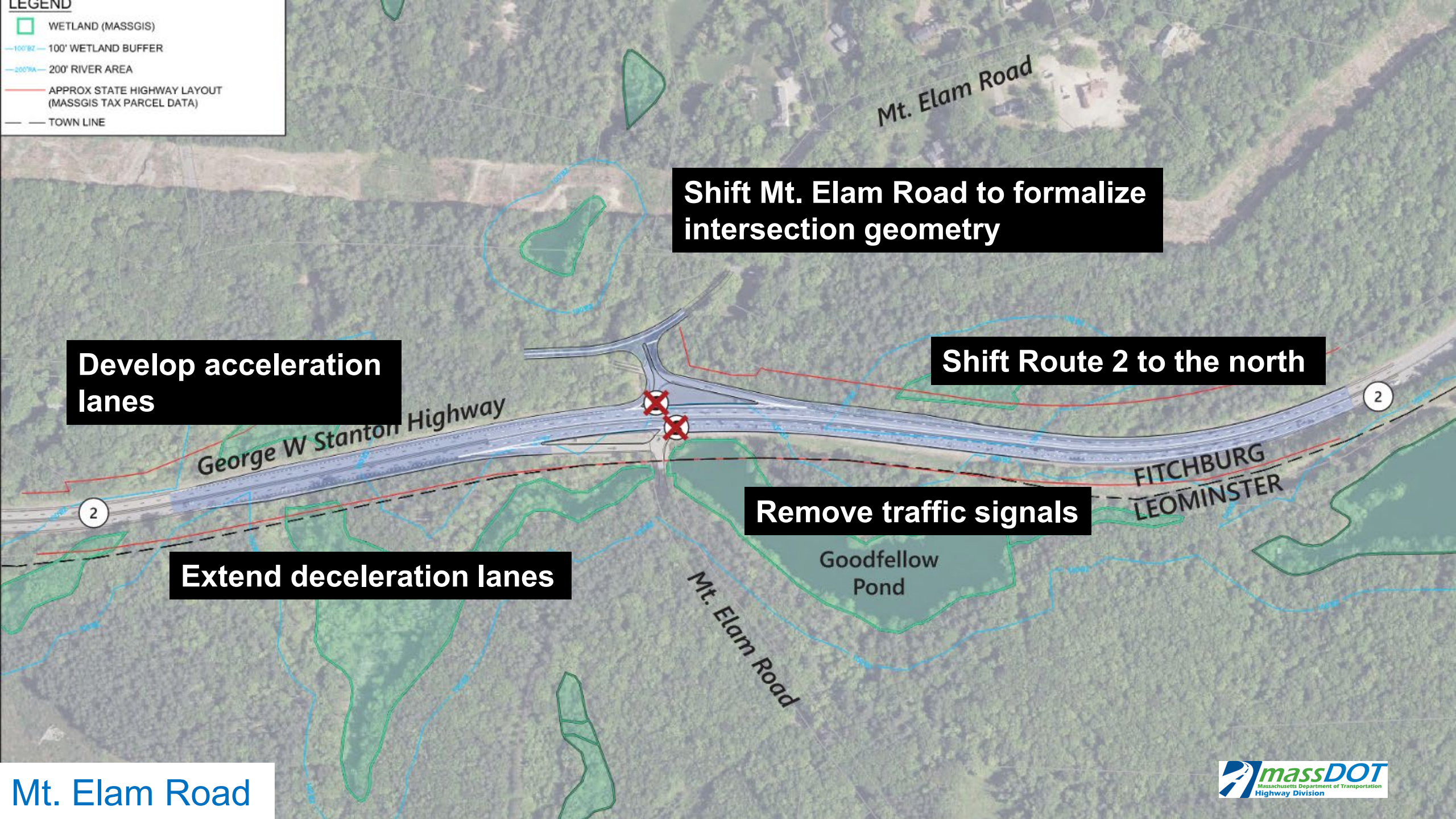
### Operational, Safety & Multi-modal Enhancements

- Addition of 3rd Lane in each direction - entire corridor or at select locations
- Interchange Enhancements
  - Near-Term – Acceleration/Deceleration lanes; weaving areas
  - Peer Review of select Interchanges studied by others (Lancaster/Shirley/Harvard)
  - Local Roads – enhanced traffic control; Bike/Ped considerations
  - Full Interchange reconstruction
- Review Right-In/Right-Out Locations
- Route 2 at Taylor/Piper Roads



**LEGEND**

- WETLAND (MASSGIS)
- 100' WETLAND BUFFER
- 200' RIVER AREA
- APPROX STATE HIGHWAY LAYOUT (MASSGIS TAX PARCEL DATA)
- TOWN LINE



**Shift Mt. Elam Road to formalize intersection geometry**

**Develop acceleration lanes**

**Shift Route 2 to the north**

**Remove traffic signals**

**Extend deceleration lanes**

**Mt. Elam Road**





**Extend acceleration lanes**

**Modify auxiliary  
lane to be proper  
acceleration lane**

**Extend deceleration lanes**

**Upgrade  
intersection  
control**

**Dead-end Abbott  
Avenue (S)**

Merriam Ave





**LEGEND**

- WETLAND (MASSGIS)
- 100' WETLAND BUFFER
- 200' RIVER AREA
- APPROX STATE HIGHWAY LAYOUT (MASSGIS TAX PARCEL DATA)
- TOWN LINE



**Extend acceleration lanes**

**Modify off-ramp to bring into signal**

**Extend deceleration lanes**

**Close SE on-ramp and NW off-ramp**



**Route 12**



**LEGEND**

- WETLAND (MASSGIS)
- 100' WETLAND BUFFER
- 200' RIVER AREA
- APPROX STATE HIGHWAY LAYOUT (MASSGIS TAX PARCEL DATA)

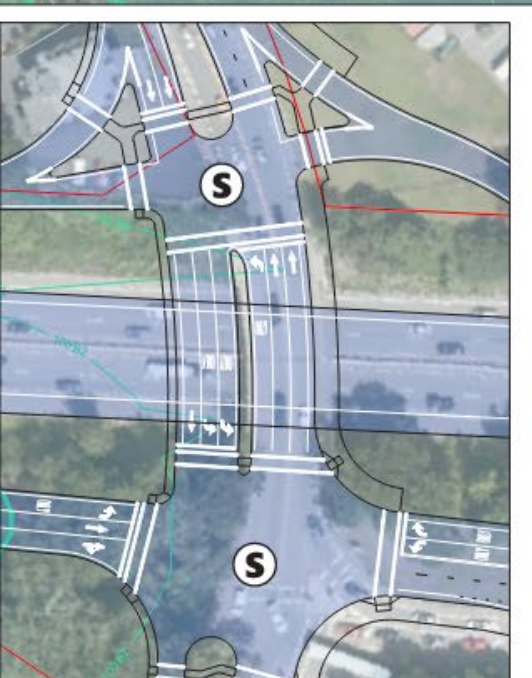
**Provide new ramps**

**Bridge widening**

**Dead-end Mead St**

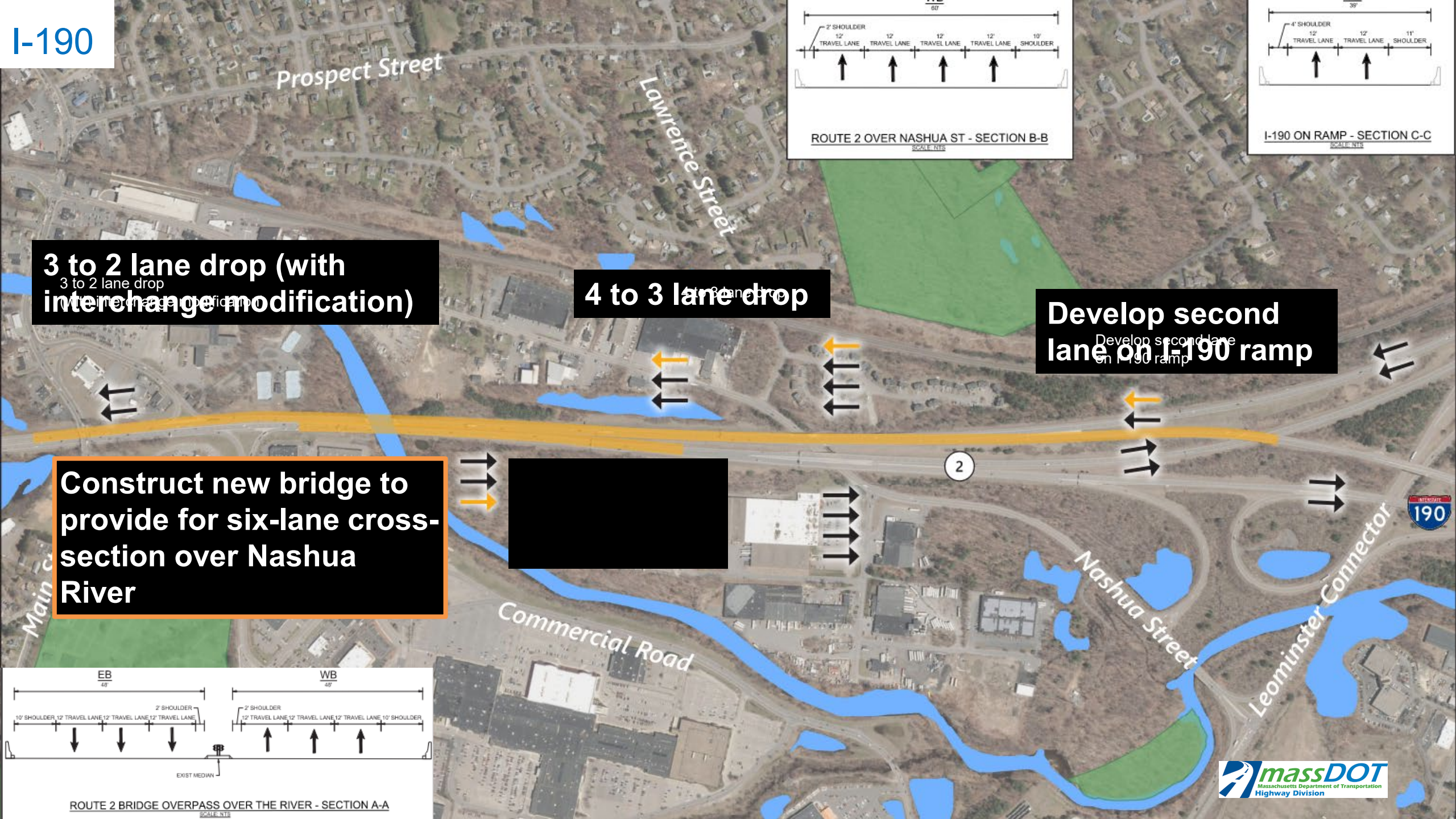
**Remove Ramps**

**Modify traffic signals**



**Route 13**





I-190

Prospect Street

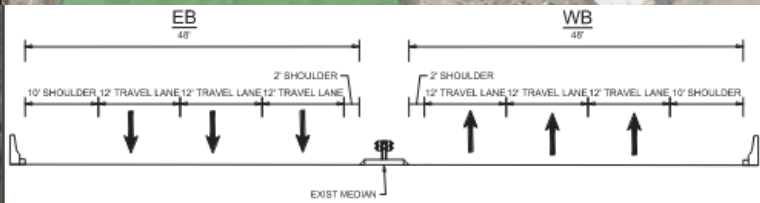
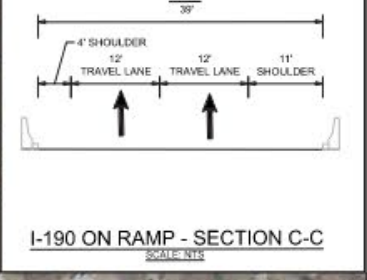
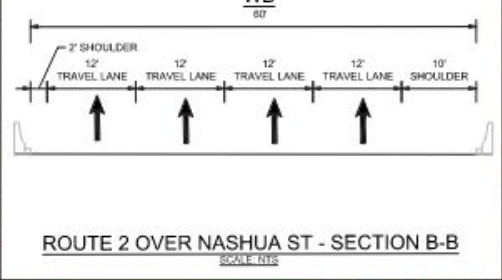
Lawrence Street

3 to 2 lane drop (with interchange modification)

4 to 3 lane drop

Develop second lane on I-190 ramp

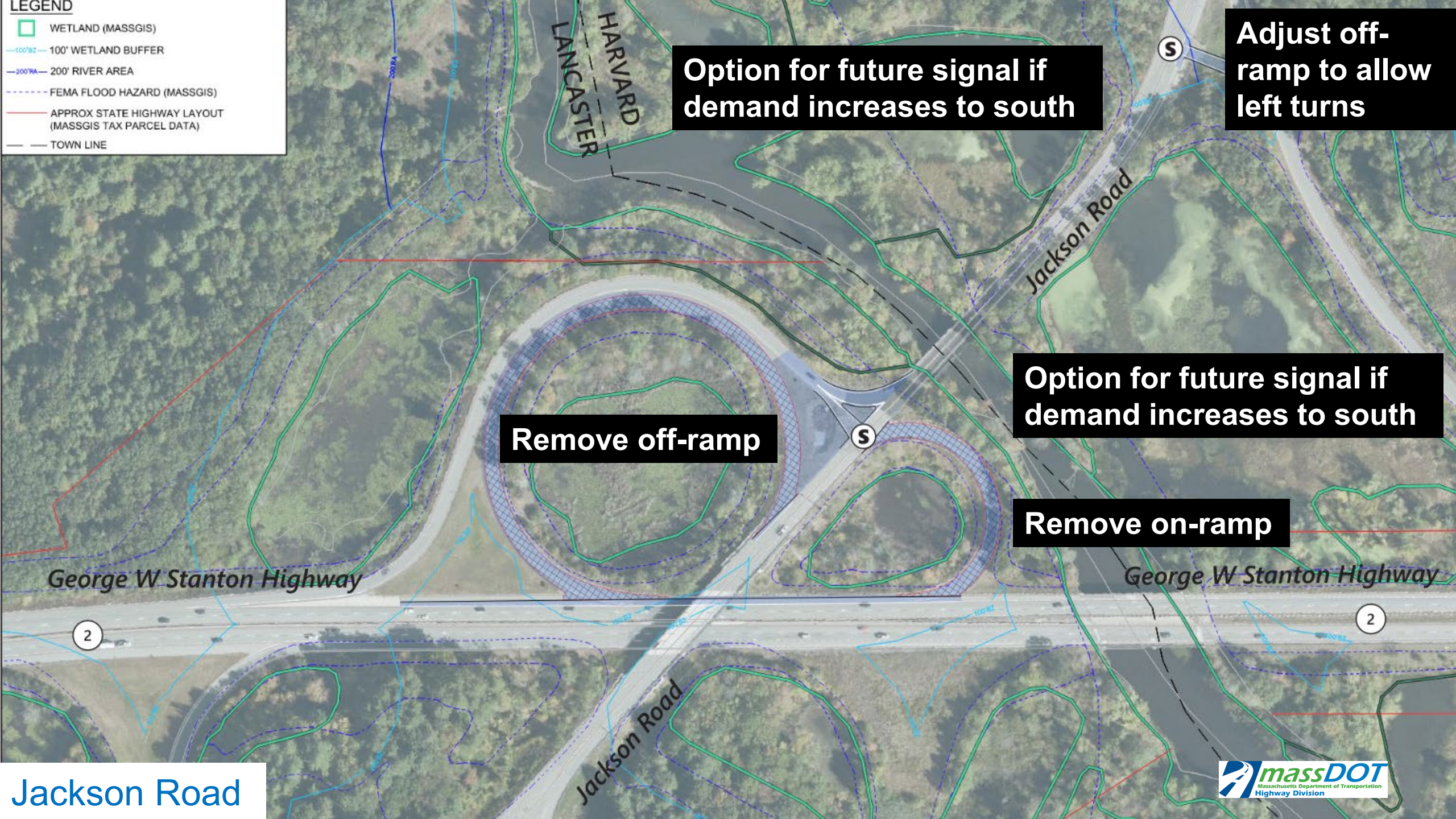
Construct new bridge to provide for six-lane cross-section over Nashua River





**LEGEND**

- WETLAND (MASSGIS)
- 100' WETLAND BUFFER
- 200' RIVER AREA
- FEMA FLOOD HAZARD (MASSGIS)
- APPROX STATE HIGHWAY LAYOUT (MASSGIS TAX PARCEL DATA)
- TOWN LINE



Option for future signal if demand increases to south

Adjust off-ramp to allow left turns

Remove off-ramp

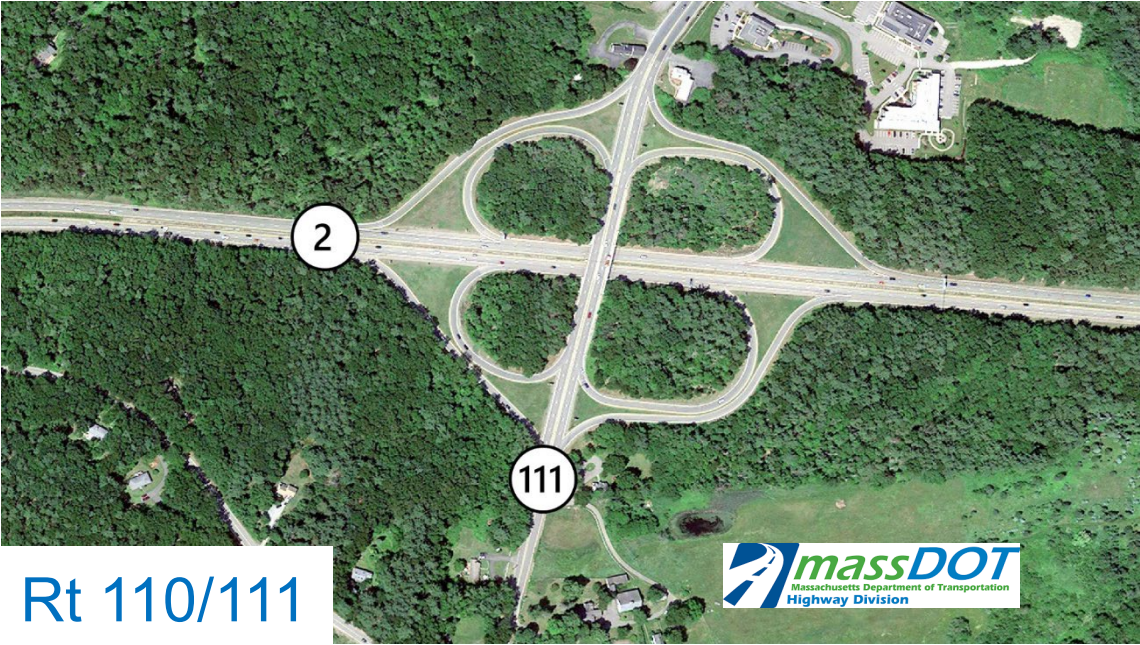
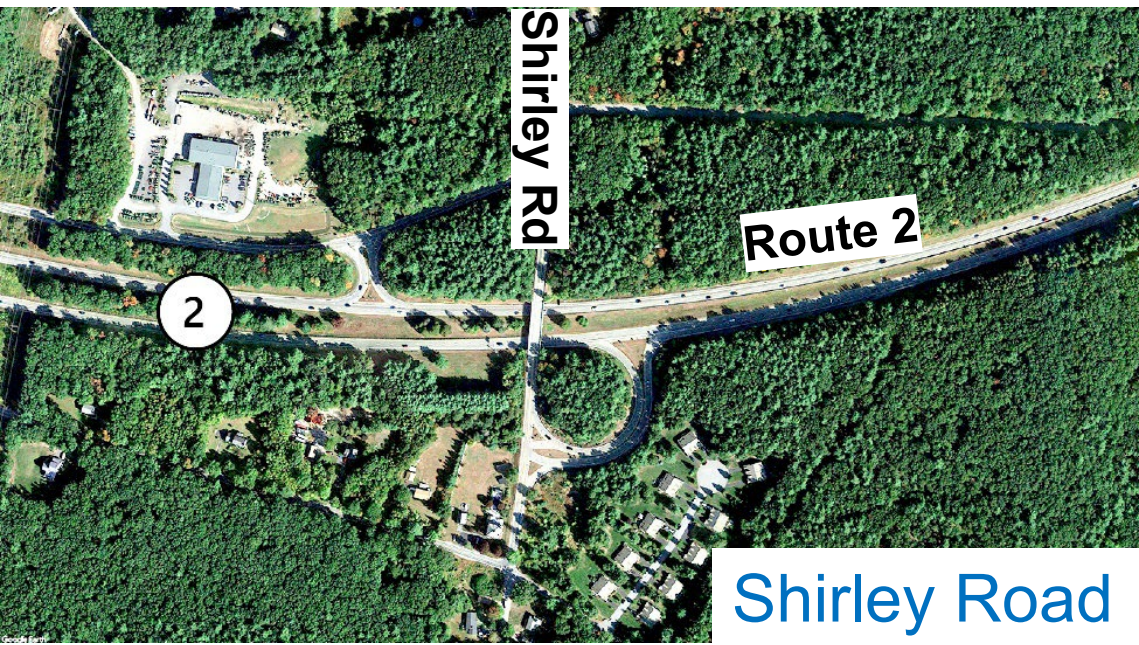
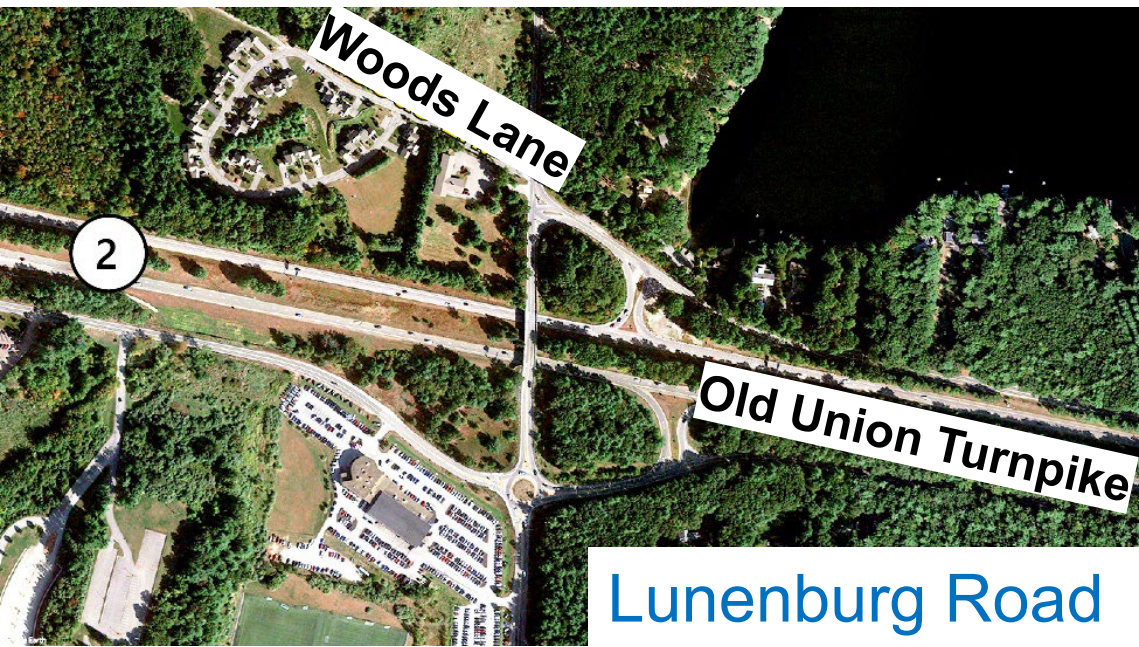
Option for future signal if demand increases to south

Remove on-ramp

Jackson Road



# Peer Review Locations



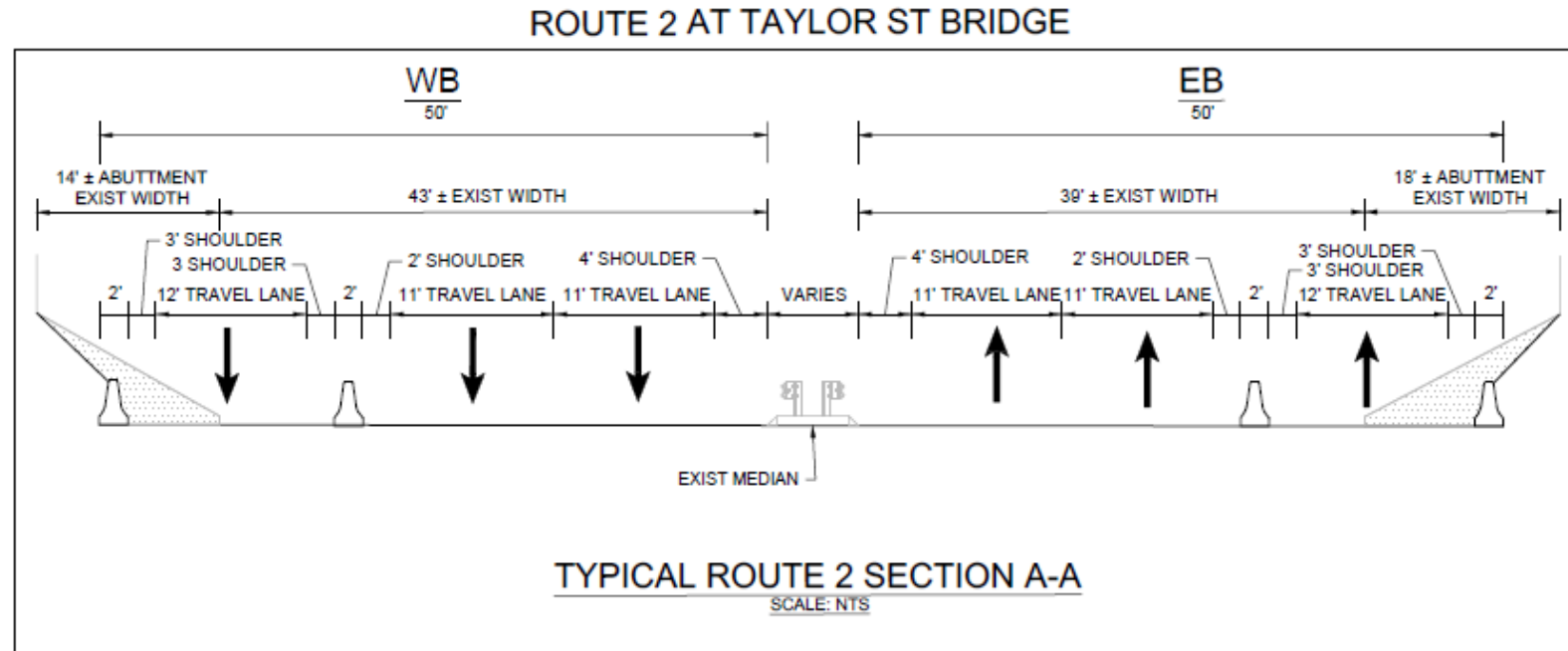


# I-495 and Taylor Street



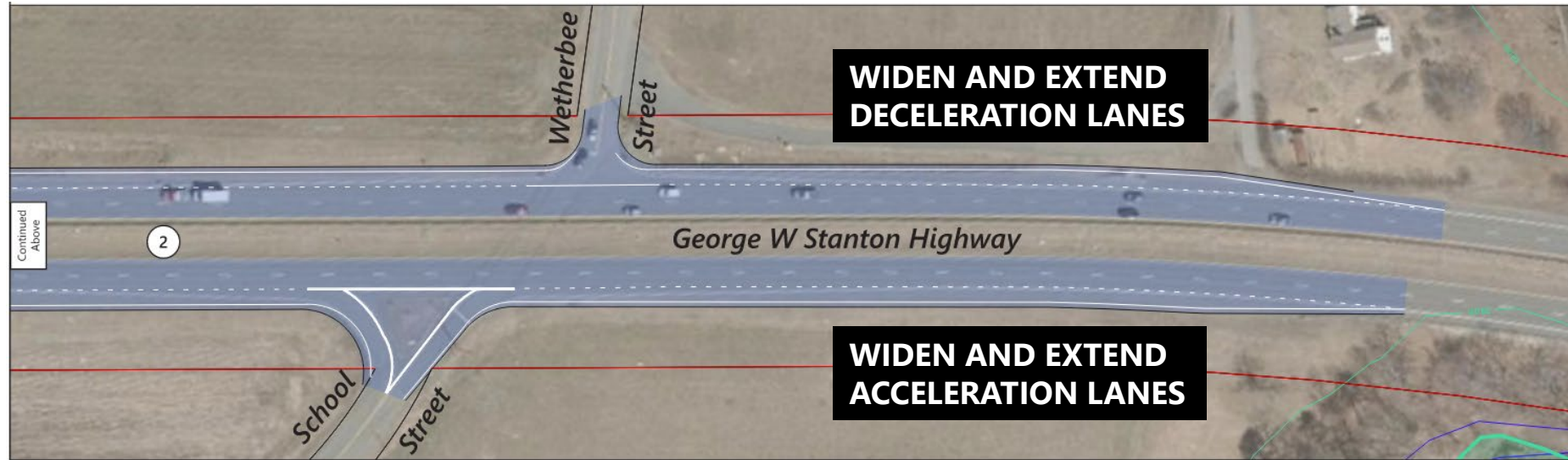
**Develop Collector-Distributor  
(CD) Lane  
(Eastbound and Westbound)**

# I-495 and Taylor Street





## Right-in Right-out



- Evaluated at 4 locations
  - Wetherbee Street/School Street (Acton)
  - Hosmer Street (Acton)
  - Abbott Avenue (Leominster)
  - Oak Hill Road/Palmer Road (Fitchburg)
- Reviewed traffic volumes and crash history
- Considered closure, access & diversion implications (will require coordination with communities)
- Developed extended acceleration and deceleration lanes



## Taylor-Piper

- TIP project initiated by MassDOT and brought to 25% design stage
- Peer review of 25% design
- 25% design included the removal of the Route 2 eastbound left-turn
- MassDOT is currently working on alternative intersection concepts



## Eastern Area Alternatives Considered

- Concord Rotary Update
- Operational, Safety and Multimodal Enhancements
  - 3rd lane considerations – entire corridor or at select locations
  - Improvement alternatives at signalized locations



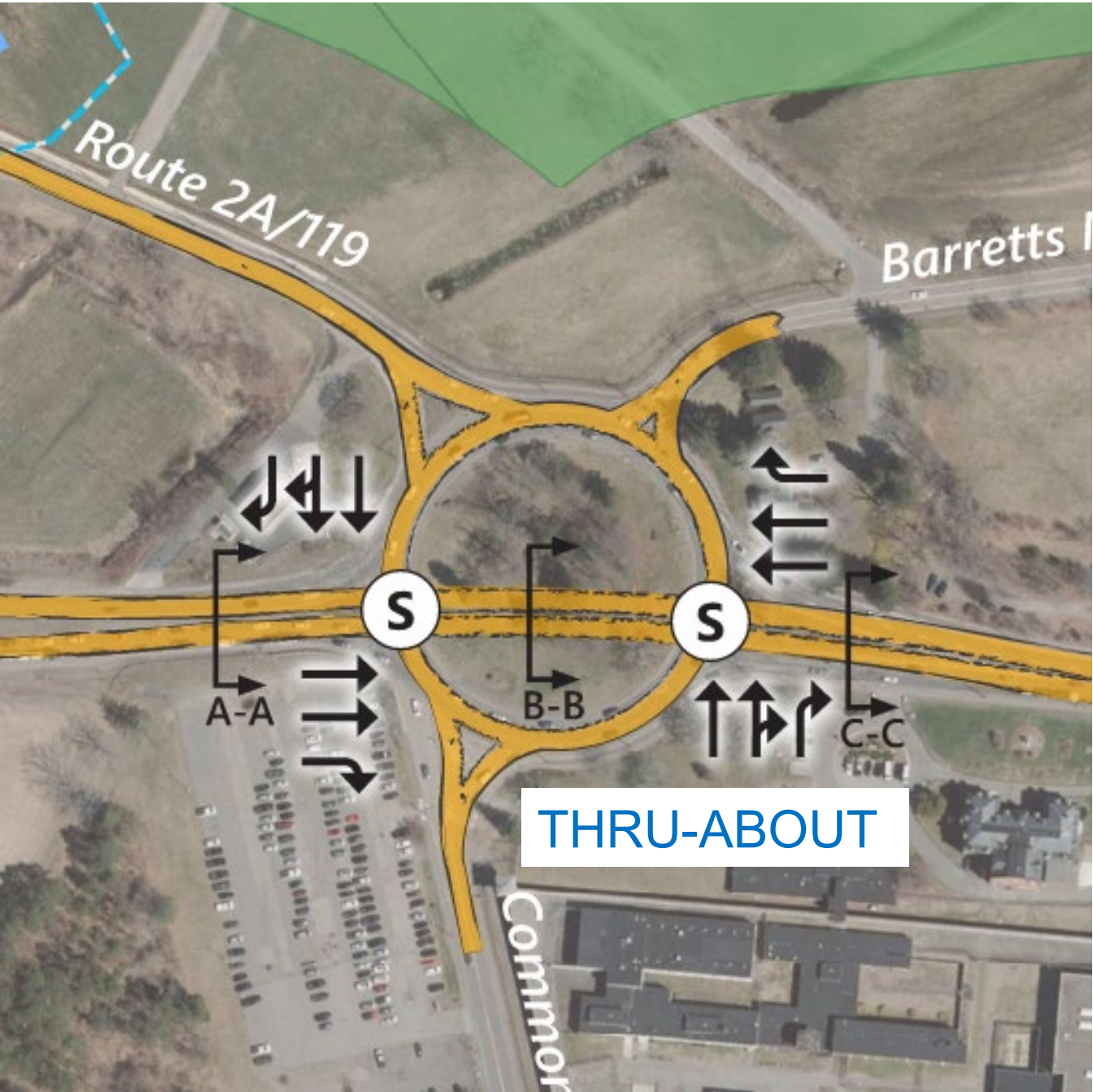
## Concord Rotary: Grade-Separated Alternatives



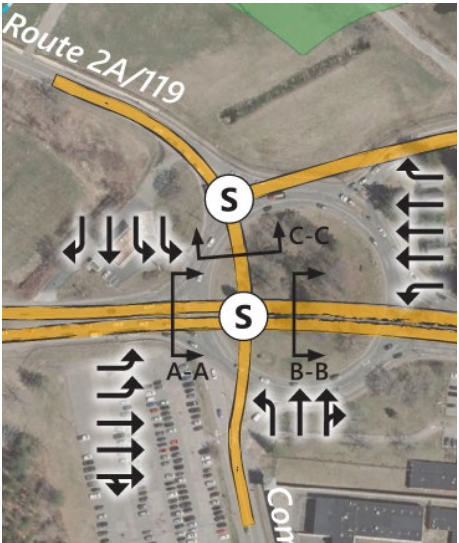
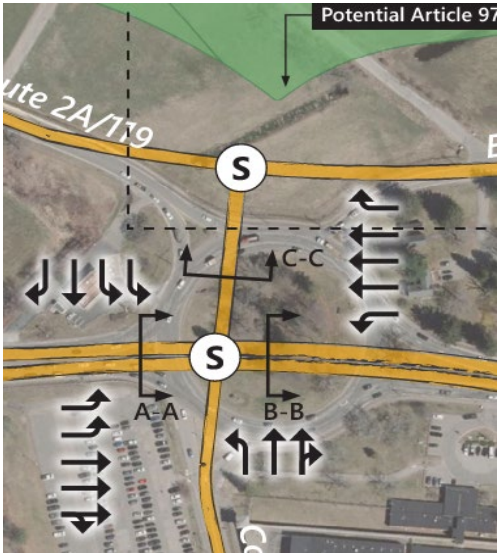
Large Investment; as well as notable Environmental, ROW and Traffic Impacts



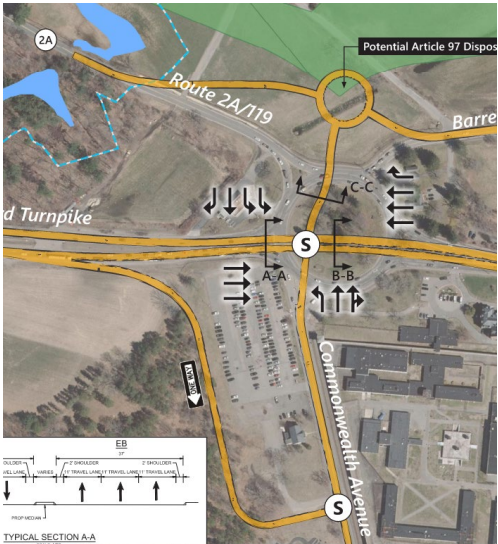
# Concord Rotary: At-Grade Alternatives



# Signal/Geometric Alternatives



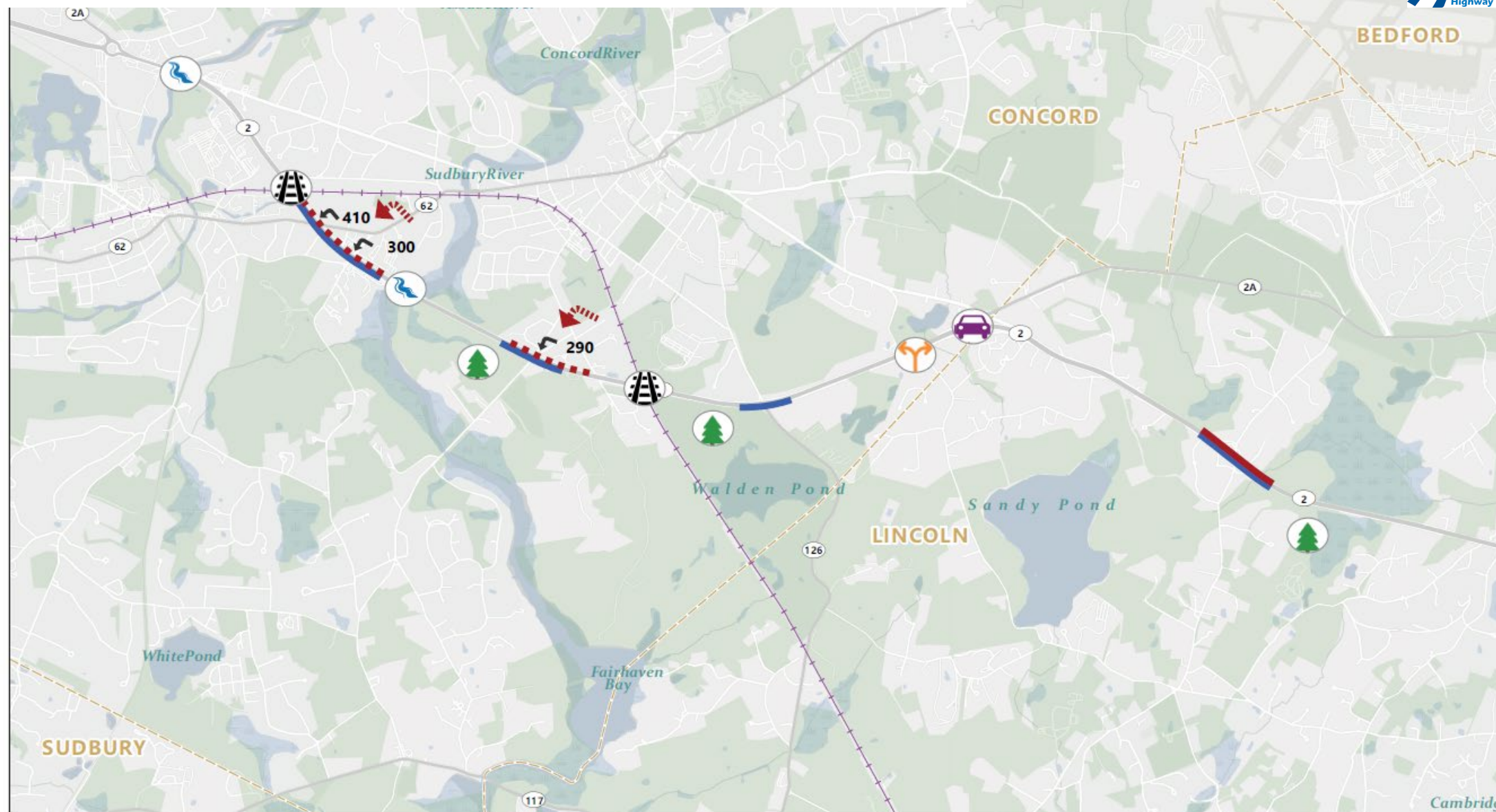
# 1-way Couplet Alternatives



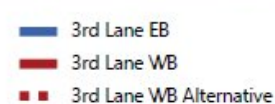
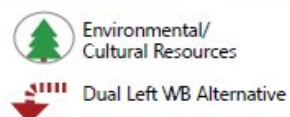
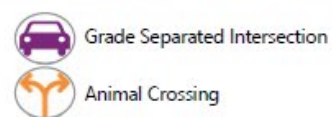
# Eastern Area Alternatives Considered

- Operational Enhancements
  - 3rd lane considerations – entire corridor or at select locations
  - Turn restrictions
  - Signal phasing modifications
  - Lane-use modifications
- Safety Enhancements
  - Signal equipment replacement
  - Clearance timing adjustments
  - Road Safety Audit (RSA) suggestions
- Multi-modal Enhancements
  - Bike accommodation (across Route 2)
  - Pedestrian movements at key intersections





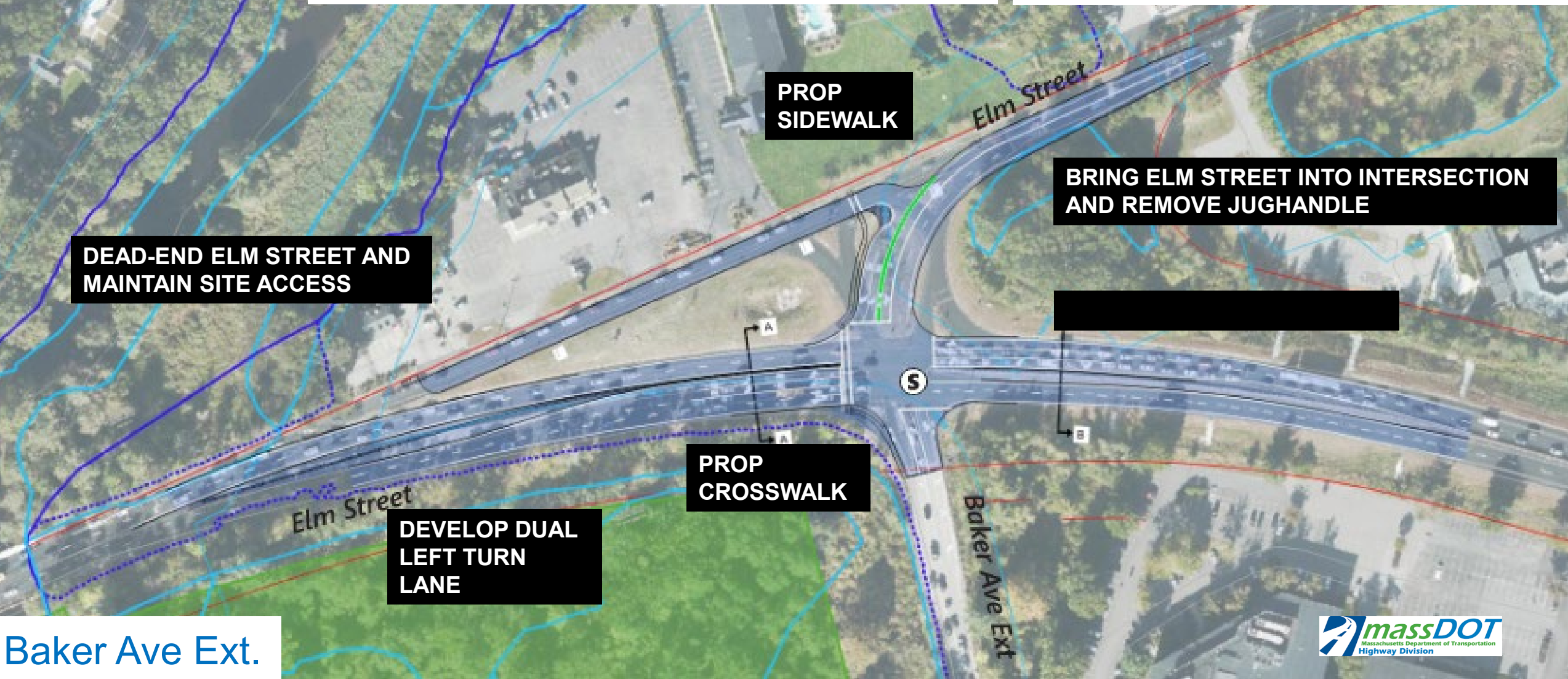
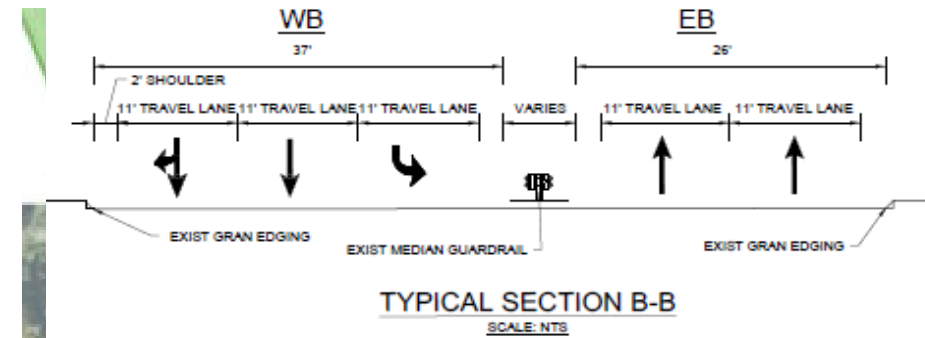
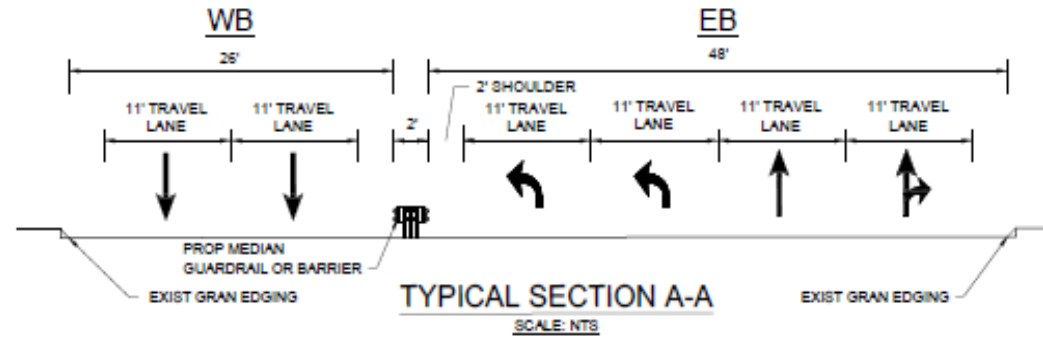
Town of Concord



Third Lane Proposed Area  
Eastern (District 4) Study Area  
Route 2 Corridor Study

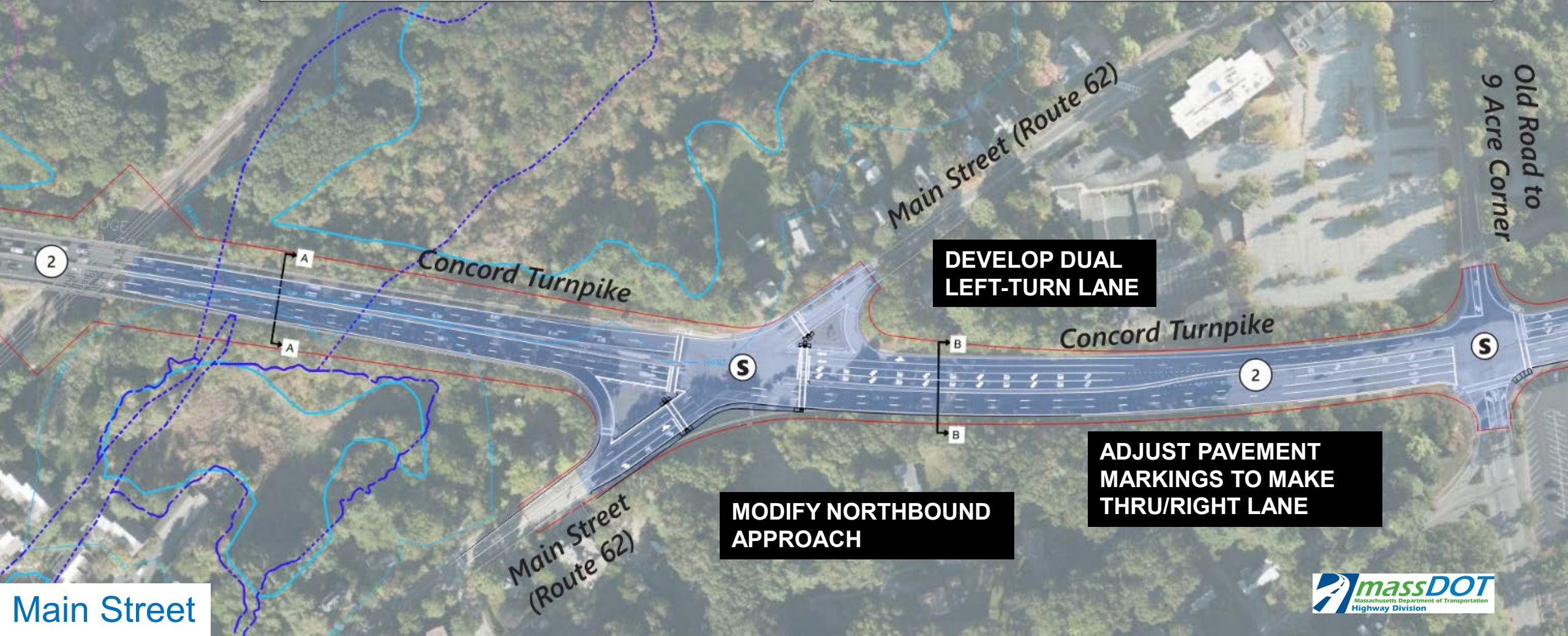
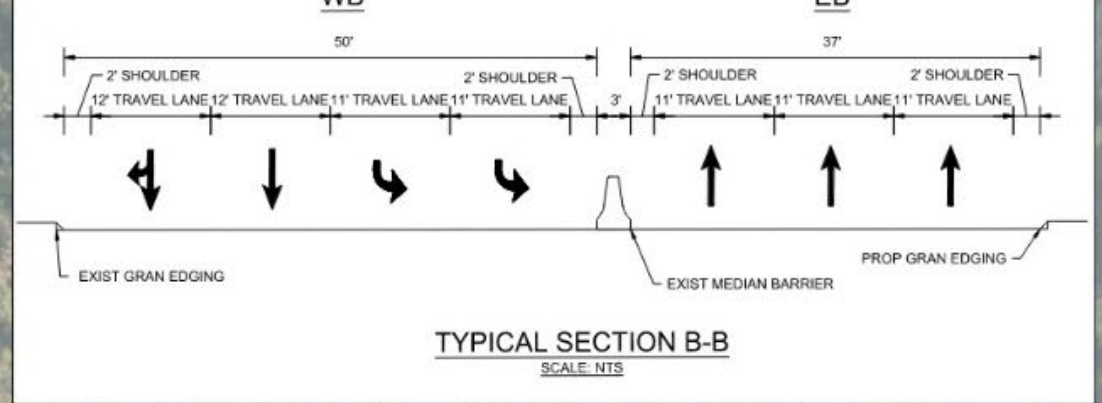
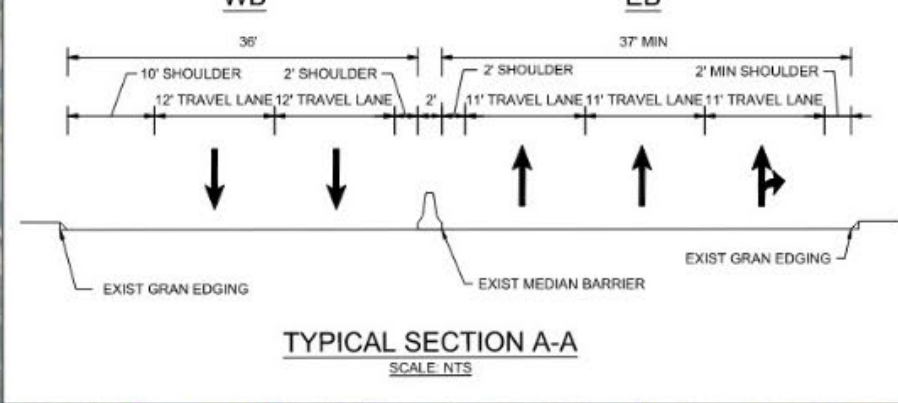
**Figure 4-17**

- WETLAND (MASSGIS)
- 100' WETLAND BUFFER
- 300' RIVER AREA
- 100 YEAR FLOODPLAIN (MASSGIS)
- POTENTIAL VERNAL POOL (MASSGIS)
- OPENSACE (MASSGIS)
- STATE HIGHWAY LAYOUT
- UPGRADE TRAFFIC SIGNAL





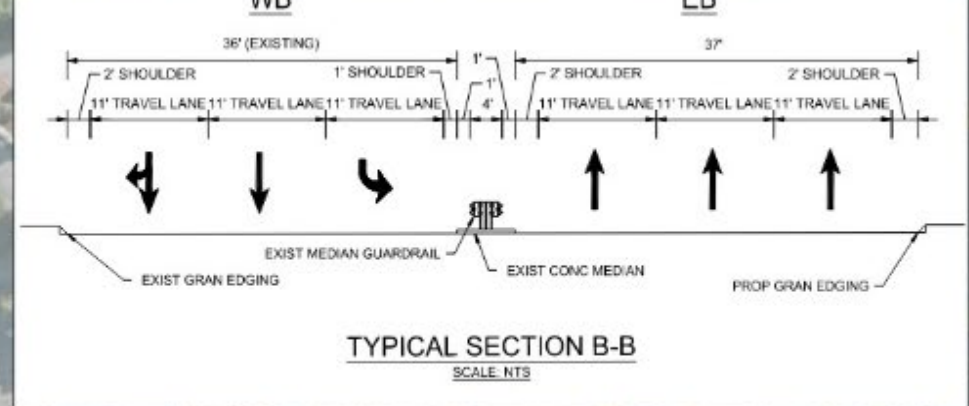
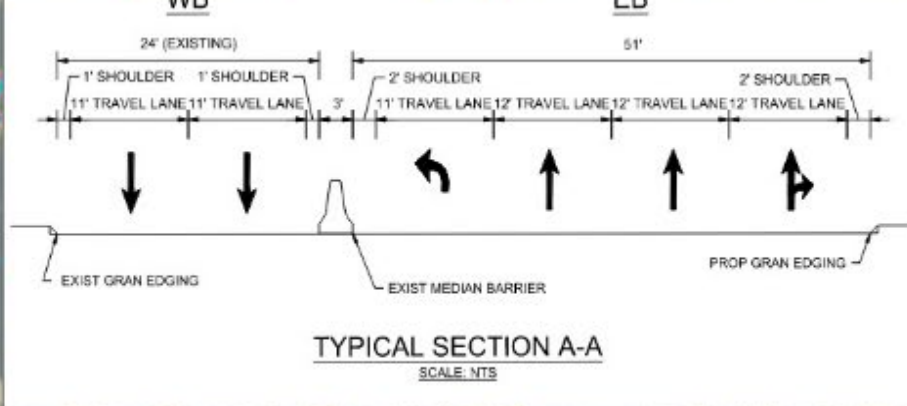
- WETLAND (MASSGIS)
- 100' WETLAND BUFFER
- 100 YEAR FLOODPLAIN (MASSGIS)
- OPENSOURCE (MASSGIS)
- STATE HIGHWAY LAYOUT
- UPGRADE TRAFFIC SIGNAL



Main Street

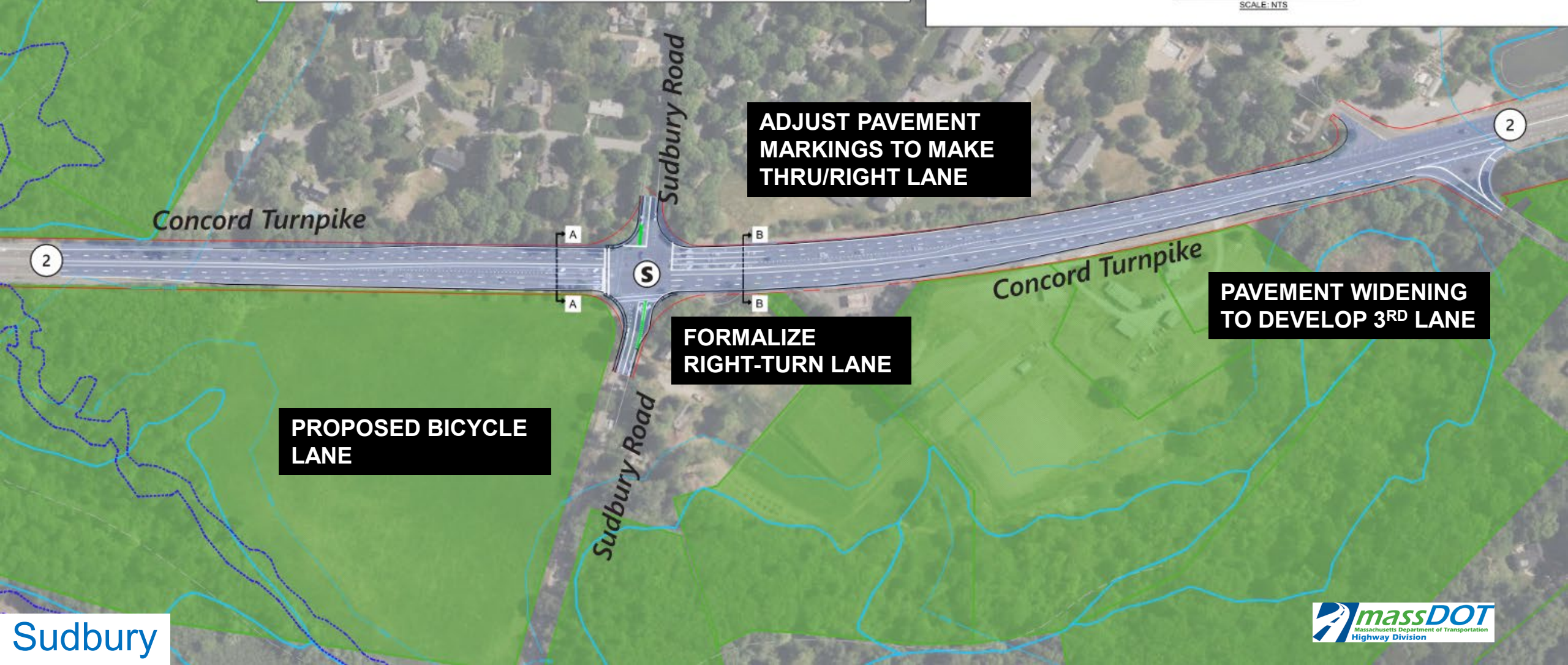
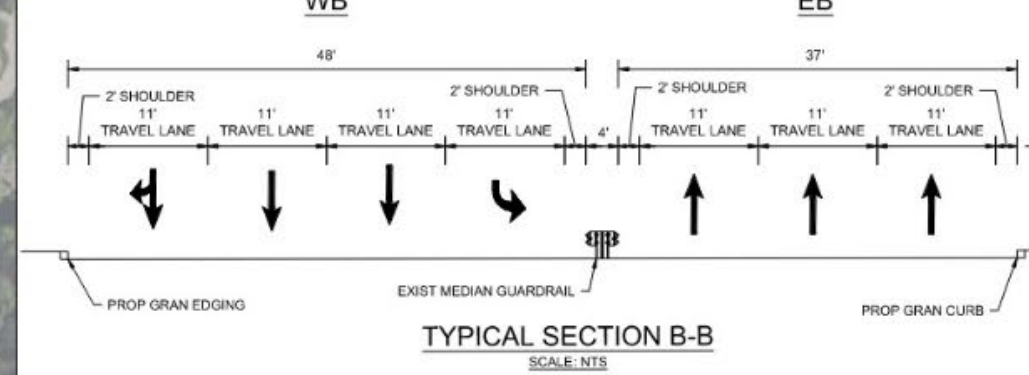
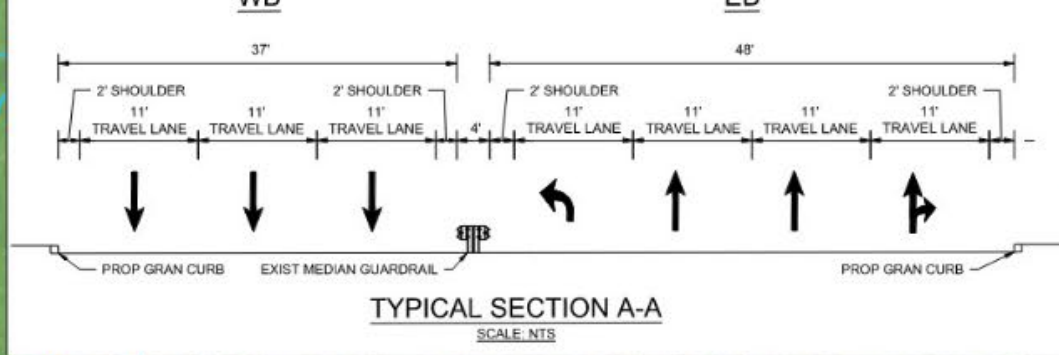


- WETLAND (MASSGIS)
- 100' WETLAND BUFFER
- 100 YEAR FLOODPLAIN (MASSGIS)
- OPENSOURCE (MASSGIS)
- STATE HIGHWAY LAYOUT
- UPGRADE TRAFFIC SIGNAL



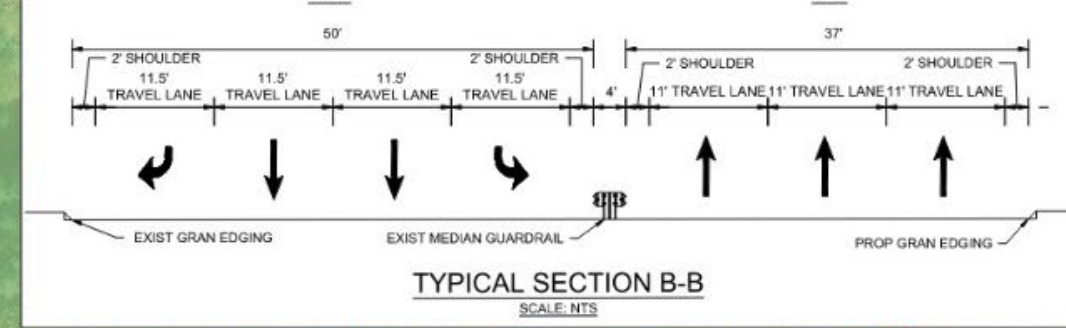
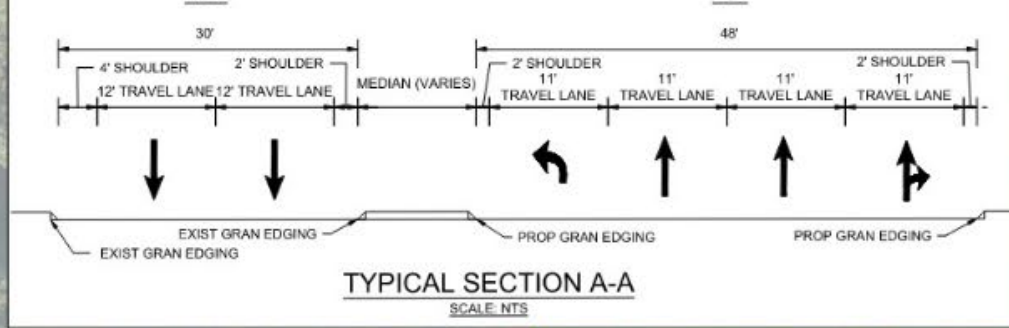


- LEGEND**
- WETLAND (MASSGIS)
  - 100' WETLAND BUFFER
  - 100 YEAR FLOODPLAIN (MASSGIS)
  - OPENSOURCE (MASSGIS)
  - STATE HIGHWAY LAYOUT
  - UPGRADE TRAFFIC SIGNAL



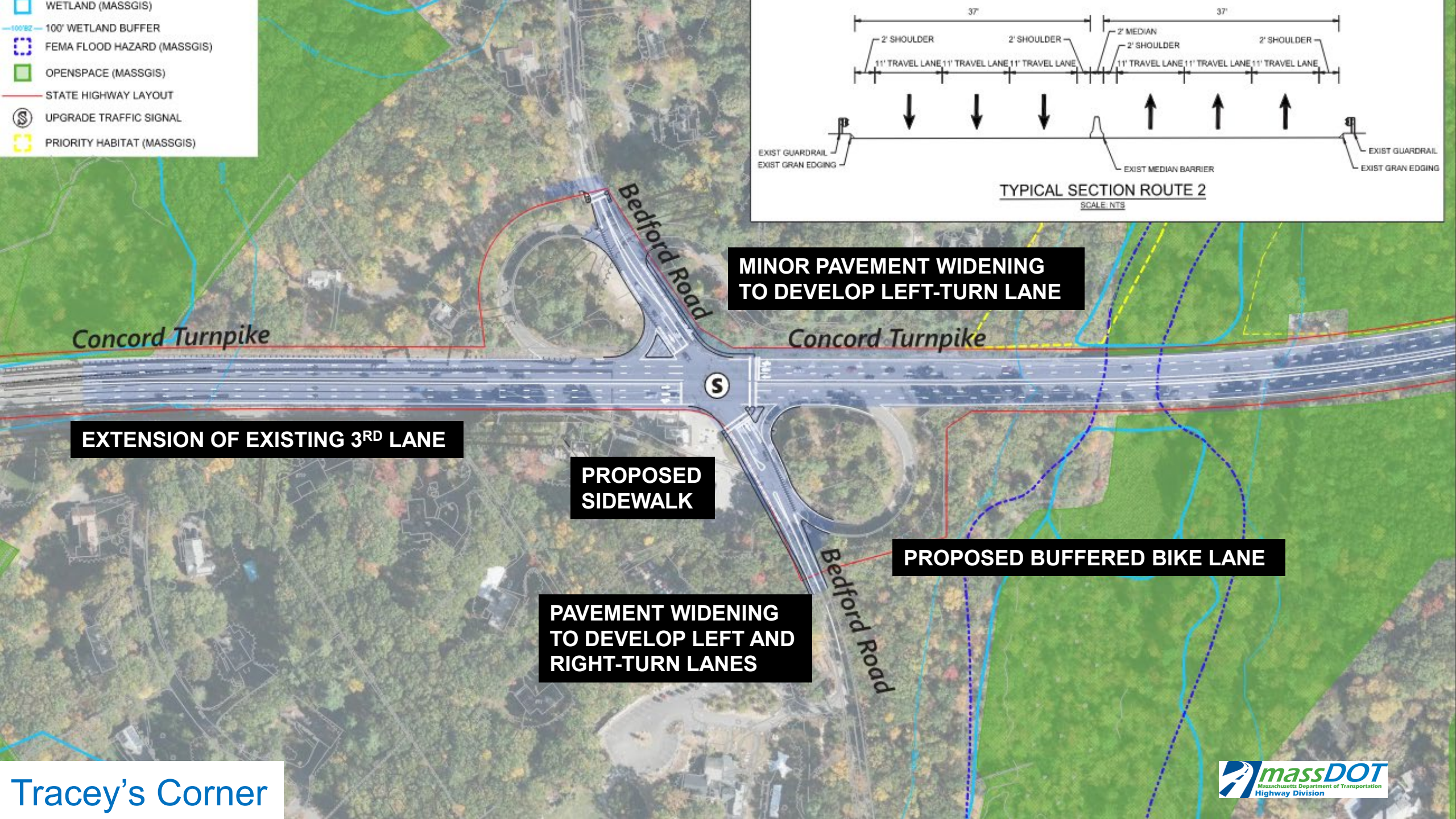
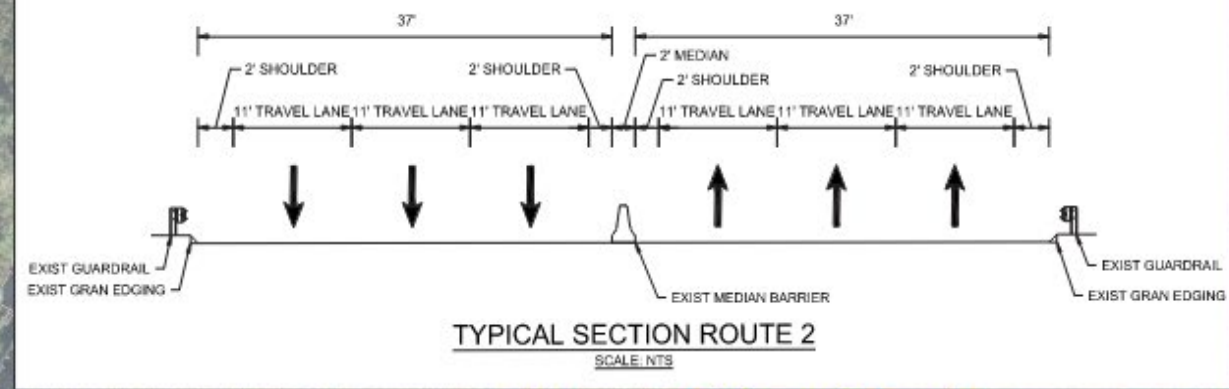


-  WETLAND (MASSGIS)
-  100' WETLAND BUFFER
-  POTENTIAL VERNAL POOL (MASSGIS)
-  OPENSOURCE (MASSGIS)
-  STATE HIGHWAY LAYOUT
-  UPGRADE TRAFFIC SIGNAL





- WETLAND (MASSGIS)
- 100' WETLAND BUFFER
- FEMA FLOOD HAZARD (MASSGIS)
- OPENSOURCE (MASSGIS)
- STATE HIGHWAY LAYOUT
- UPGRADE TRAFFIC SIGNAL
- PRIORITY HABITAT (MASSGIS)



**MINOR PAVEMENT WIDENING  
TO DEVELOP LEFT-TURN LANE**

**EXTENSION OF EXISTING 3<sup>RD</sup> LANE**

**PROPOSED  
SIDEWALK**

**PAVEMENT WIDENING  
TO DEVELOP LEFT AND  
RIGHT-TURN LANES**

**PROPOSED BUFFERED BIKE LANE**

Tracey's Corner



## Route 2 Corridor Study Summary

- Report summarized potential improvement alternatives, including:
  - Time frame (short/medium/long-term)
  - Order of magnitude construction costs
  - Safety benefits
  - ROW implications
  - Environmental constraints
  - Traffic diversion potential
  - Prioritization of alternatives

## Next Steps



Legislative Briefing – 11/27  
(Completed)



Community Officials  
Briefings – 1/30 and 2/1  
(Completed)



**Public Information  
Meetings – 2/13 and 2/20**  
**(Ongoing)**



Release report for  
public comment  
(Coming Weeks)



Begin Discussion with  
local Metropolitan Planning  
Organizations (MPOs)

**NO SPECIFIC PROJECTS INITIATED/FUNDED CURRENTLY – CONCEPTUAL  
LEVEL PLANNING STUDY ONLY**



# Communications

- Presentation will be posted online at: <http://www.mass.gov/orgs/highway-division/events>
- A link to presentation will also be emailed to stakeholders and those who registered for the Public Information Meetings
- When available, a link to the full study will be emailed to stakeholders and those who registered for the Public Information Meetings
- The public can submit comments at: <http://tinyurl.com/Route-2-Comments> or follow the QR code
- Study website is in the process of being created



## Questions and answers



- “Raise your hand” to be unmuted for verbal questions (Alt + Y if using a phone)



- Submit your questions and comments using the Q&A button



- Please state your name before your question



- Please share only 1 question or comment at a time, limited to 2 minutes, to allow others to participate



- To ask a question via phone, dial \*9 and the moderator will call out the last 4-digits of your phone number and unmute your audio when it is your turn

**All questions and comments are subject to disclosure for public records. Please use these functions for project related business only.**



# Thank You!

## Route 2 Corridor Study Status Update

*Public Information Meeting*

Zoom | February 13 & 20, 2024 | 6:00 PM

