








Route 6 (Scenic Highway) Corridor Improvements

Public Information Meeting

Virtual Meeting | May 18, 2022 | 7:00 PM

Project No. 606082

Zoom Webinar Controls

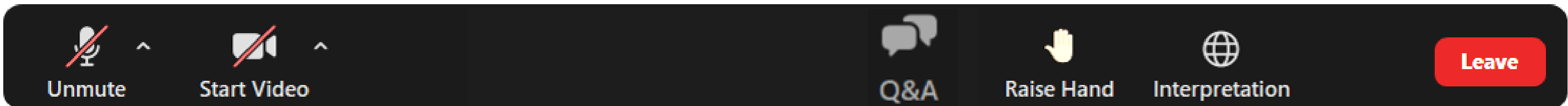
- 
 • Listen in Spanish or Portuguese
- 
 • Drop down menu to check microphone and speakers
- 
 • Ask a question and share comments
- 
 • Raise your hand
- 
 • If you are unable to access the internet or are having technical problems, please call into the meeting at 301-715-8592, Webinar ID: 829 1106 5517



If you have trouble with the meeting technology during the presentation, please call:

1-888-799-9666

Closed captioning automatically generated by Zoom



Public Meeting Notes and Procedures

Notification of Recording

- This virtual public meeting will be recorded. The Massachusetts Department of Transportation may choose to retain and distribute the video, still images, audio, and/or chat transcript. By continuing attendance with this virtual public meeting, you are consenting to participate in a recorded event.
- If you are not comfortable being recorded, please turn off your camera, keep your microphone muted, and refrain from chatting in the transcript box. Else you may choose to excuse yourself from the meeting.

Other Important Notes

- Your microphone and webcam are automatically disabled upon entering this meeting.
- The meeting will be open to questions and answers at the end of the formal presentation.
- Please take time to respond to our survey! Your feedback is important.

All questions and comments are welcome and appreciated, however we do request that you refrain from any disrespectful comments.

Project Team:

- **MassDOT Project Manager**
 - Muazzez G. Reardon, P.E.
- **MassDOT District 5 Project Development Engineer**
 - Pamela Haznar, P.E.
- **MassDOT District 5 Assistant Project Development Engineer**
 - Richard Bilski
- **Consultant Project Manager**
 - Jonathan Kapust, P.E. (HNTB)

Language Translation Speakers

- **Spanish**
 - Gina and Laura
- **Portuguese**
 - Rafael and Debora
- **American Sign Language**
 - Sharon M Mendes
 - Thomas Lauterborn
- **CART**
 - Amy Armstrong

Advertisements

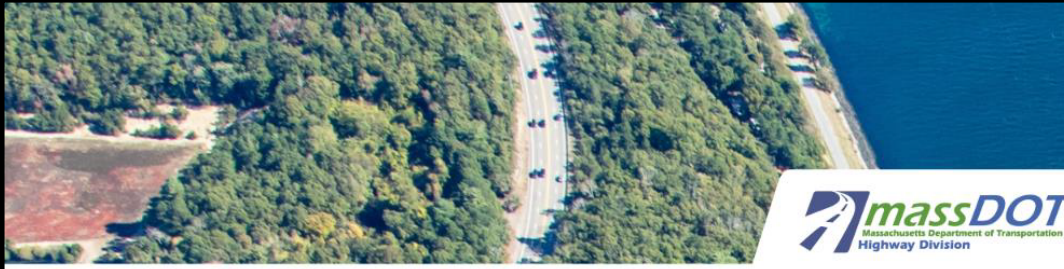
Local Papers

Appeared in the following:

- Cape Cod Times
 - May 4, 2022
 - May 11, 2022
- Bourne Enterprise
 - May 6, 2022
 - May 13, 2022

MassDOT Website

- Notice and Flyer posted on the MassDOT Website on April 21, 2022
- The meeting was advertised on MassDOT’s official Twitter account.




PUBLIC INFORMATION MEETING
Route 6 (Scenic Highway) Corridor Improvements
Bourne, MA

What is happening?
 A Live Virtual Public Information Hearing will be hosted on the MassDOT website below to present the design for the Route 6 Corridor Improvement project in Bourne, MA.

How will this affect you?
 The proposed project consists of the widening of Route 6 (Scenic Highway) between Edgehill Road and Nightingale Road. The widened roadway will include the addition of a raised center median between eastbound and westbound traffic, improvements to lane and shoulders widths and cross slope improvements on curves on the roadway. The project will incorporate a 10 foot wide shared use path between both intersections that will be physically separated from roadway traffic. Drainage improvements for treatment and catchment include a new swale along the westbound shoulder and new underground drainage.

<p>When</p> <p>Wednesday, May 18, 2022 7:00PM to 8:00PM</p>	<p>Attend</p> <p>www.mass.gov/massdot-highway-design-public-hearings</p>
---	--

 This meeting is accessible to people with disabilities and those with limited English proficiency. MassDOT provides reasonable accommodations and/or language assistance free of charge upon request, as appropriate. To request accommodation or language assistance, please contact MassDOT’s Chief Diversity and Civil Rights Officer by phone (857-368-8580), TTD/TTY at (857) 266-0603, fax (857) 368-0602 or by email (MassDOT.CivilRights@dot.state.ma.us). Requests should be made as soon as possible prior to the meeting, and for more difficult to arrange services including sign-language, CART or language translation or interpretation, requests should be made at least ten business days before the meeting.

Project inquiries may also be emailed to: massdotprojectmanagement@dot.state.ma.us
 Please submit any written statements regarding the proposed undertaking to: Carrie E. Lavallee, P.E., Chief Engineer, MassDOT, 10 Park Plaza, Boston, MA 02216, Attention: Project Management, PROJECT FILE NO. 606082

THE COMMONWEALTH OF MASSACHUSETTS
MASSACHUSETTS DEPARTMENT OF TRANSPORTATION – HIGHWAY DIVISION
NOTICE OF A PUBLIC INFORMATION MEETING
Project File No.606082

A Live Virtual Public Information Meeting will be hosted on the MassDOT website below to present the design for the proposed Route 6 Corridor Improvements project in Bourne, MA.

WHEN: 7:00PM, Wednesday, May 18, 2022

PURPOSE: The purpose of this meeting is to provide the public with the opportunity to become fully acquainted with the proposed Route 6 Corridor Improvements project. All views and comments submitted in response to the meeting will be reviewed and considered to the maximum extent possible.

PROPOSAL: The proposed project consists of Route 6 (Scenic Highway) between Edgehill Road and Nightingale Road. The widened roadway will include the addition of a raised center median between eastbound and westbound traffic, improvements to lane and shoulders widths and cross slope improvements on curves on the roadway. The project will incorporate a 10 foot wide shared use path between both intersections that will be physically separated from roadway traffic. Drainage improvements for treatment and catchment include a new swale along the westbound shoulder and new underground drainage.

This meeting is accessible to people with disabilities. MassDOT provides reasonable accommodations and/or language assistance free of charge upon request (e.g interpreters in American Sign Language and languages other than English, live captioning, videos, assistive listening devices and alternate material formats), as available. For accommodation or language assistance, please contact MassDOT’s Chief Diversity and Civil Rights Officer by phone (857-368-8580), TTD/TTY at (857) 266-0603, fax (857) 368-0602 or by email (MassDOT.CivilRights@dot.state.ma.us). Requests should be made as soon as possible and prior to the public information meeting, and for more difficult to arrange services including sign-language, CART or language translation or interpretation, requests should be made at least ten business days before the meeting.

This Live Virtual Public Information Meeting or a cancellation announcement will be hosted on the internet at www.mass.gov/massdot-highway-design-public-hearings.

JONATHAN GULLIVER HIGHWAY ADMINISTRATOR	CARRIE E. LAVALLEE, P.E. CHIEF ENGINEER
--	--

Project Fact Sheet for Bourne MA

<https://www.mass.gov/massdot-highway-design-public-hearings>



Project Overview

01 Project History

02 Project Goals

03 Proposed Design

04 Project Impacts

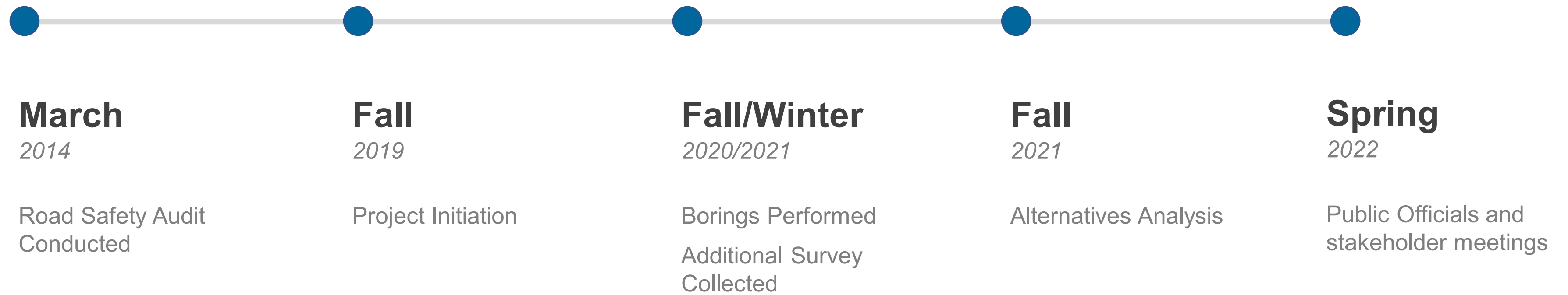
05 Timeline

Project Location

- Approximately 1.5 miles of Route 6
- Nightingale Road intersection
- Edgehill Road intersection
- No work along Scenic Overlook



How did we get here?



Recent public outreach

- Letters Sent to Public Officials
 - January 2020
- Comment Response Letters Received
 - Letter from Town of Bourne January 2020
- Public official Meeting
 - March 2022



**Why was this
project
initiated?**

Existing Issues

Safety Concerns:

- Significant number of crashes
 - Vehicles cross centerline
- Road Safety Audit in 2014 found:
 - High Speeds
 - Lack of Shoulders
 - Lack of ped/bike facilities
 - Hydroplaning
 - Drainage Issues



Existing Issues (cont'd)

Safety Concerns:

- Lack of adequate drainage is contributor to crashes.
- Drainage and Cross Slope/Superelevation improvements needed.
- Lack of bike/ped accommodations.





**What do we
want to
accomplish?**

Project Purpose

To improve safety within the corridor by:

- Lane and Shoulder Widening
 - Improve substandard widths
- Center Raised Median
 - Address crossover crashes
- Cross slope Improvements
 - Update the cross slope in curves to improve vehicular control
 - Improve stormwater catchment to minimize flow across lanes
 - Address icing in winter storm road events



Project Purpose (cont'd)

To improve safety within the corridor:

- Westbound Swale/ Upgraded Drainage System
 - Reduce ponding in roadway and probability of hydroplaning
 - Address icing in winter storm road events
- Install a Shared Use Path
 - Response to municipality request
 - Provides a safe, healthy alternative mode of travel





**How will
bicyclists and
pedestrians
be impacted?**

Bicycle and Pedestrian Connections

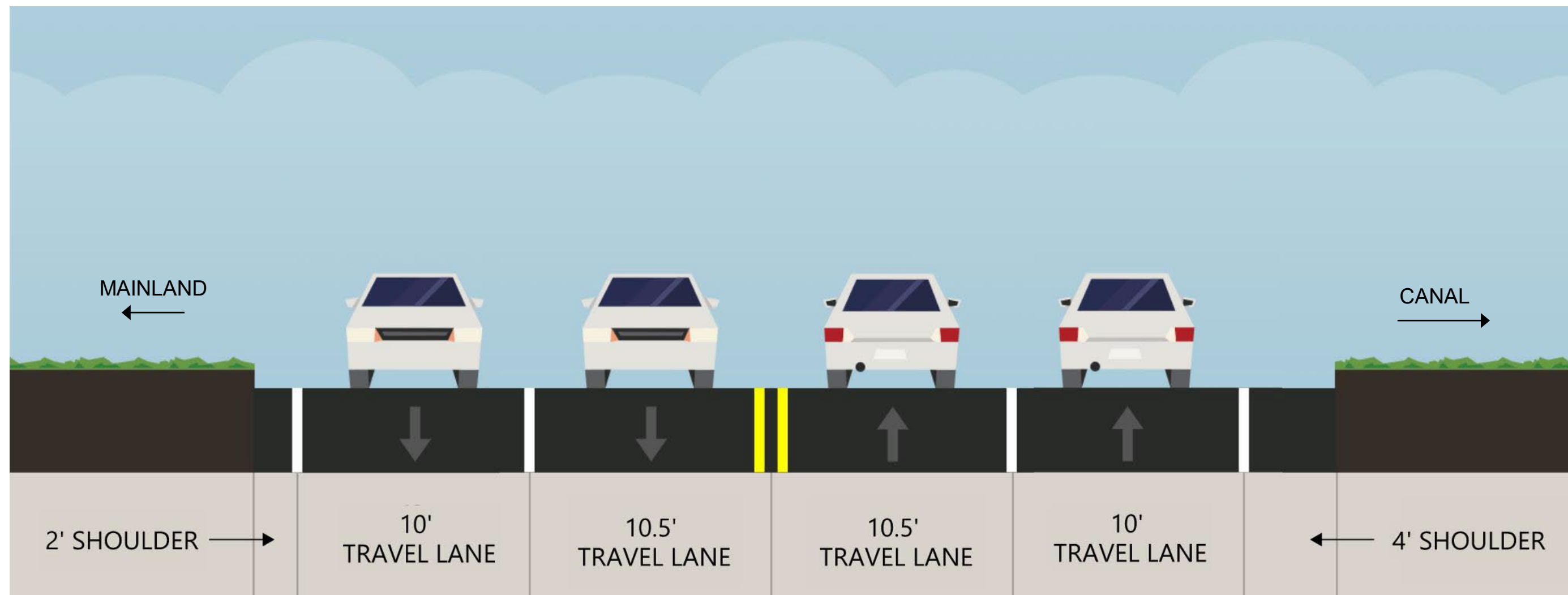
- 10' Shared Use Path
 - Protected
 - Connection to Scenic Overlook
 - New crossing at Edgehill Road



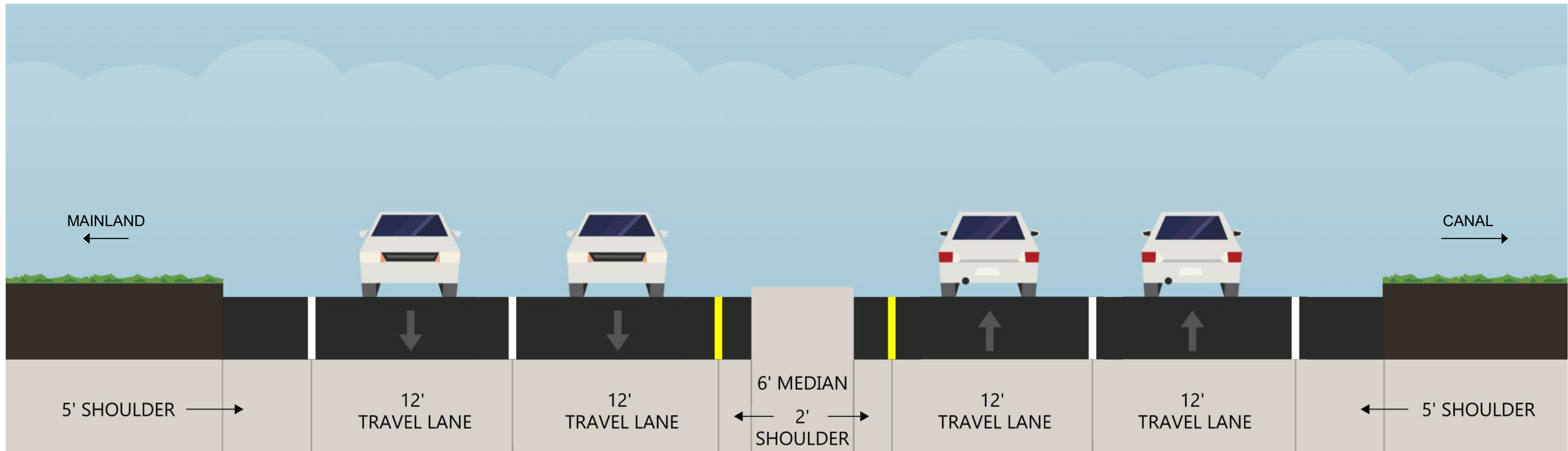


**What
alternatives
were
considered?**

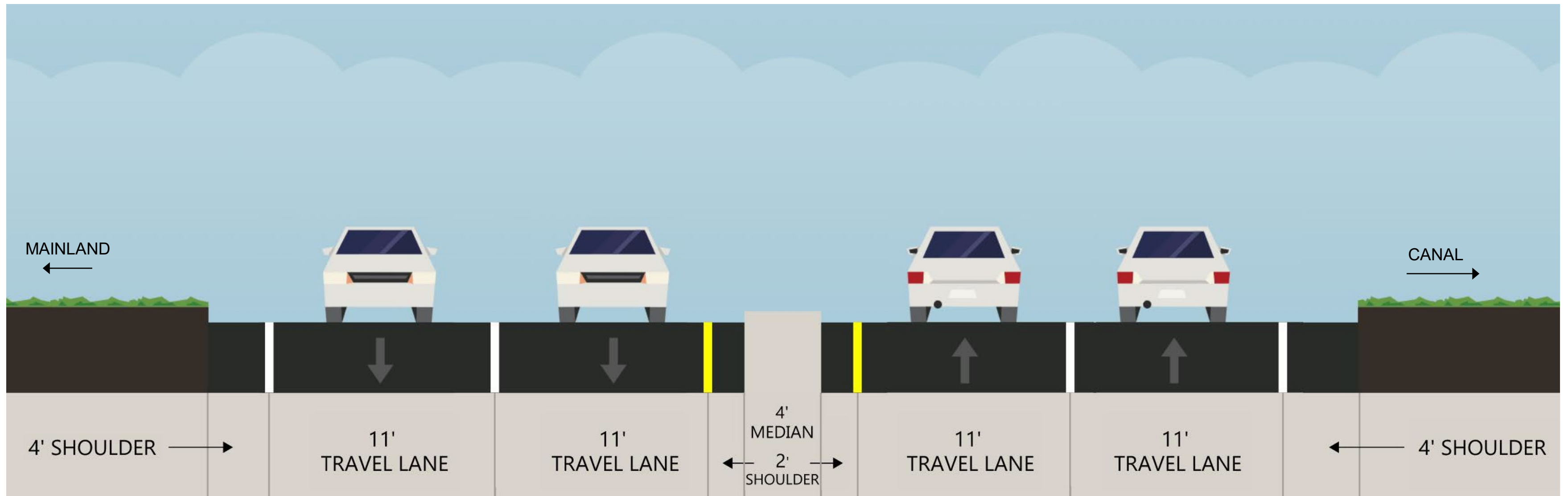
Existing Roadway



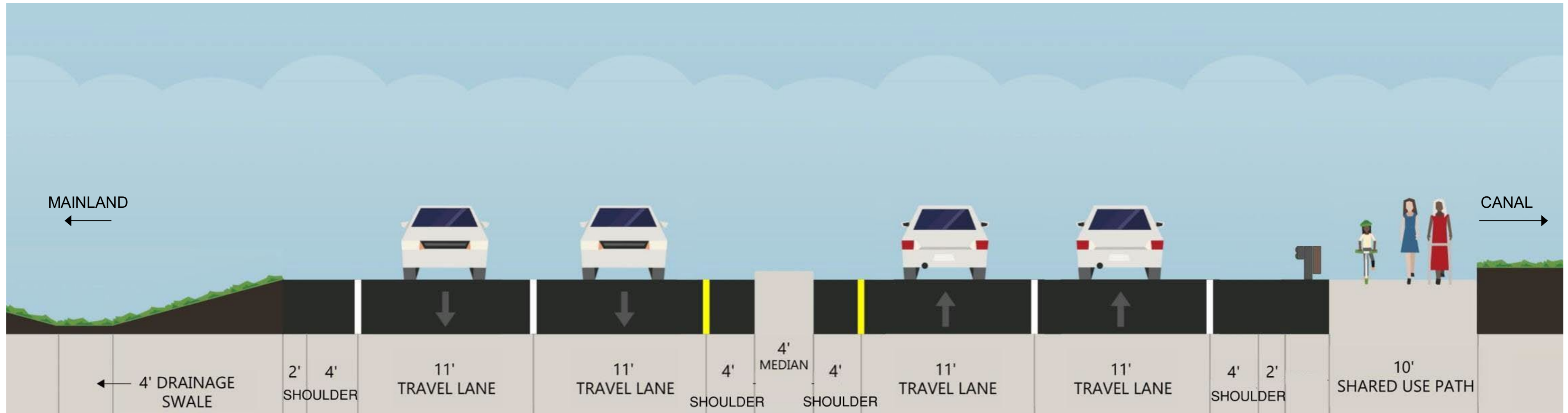
Alternative 1: Wide Median Concept



Alternative 2: Narrowed Cross Section



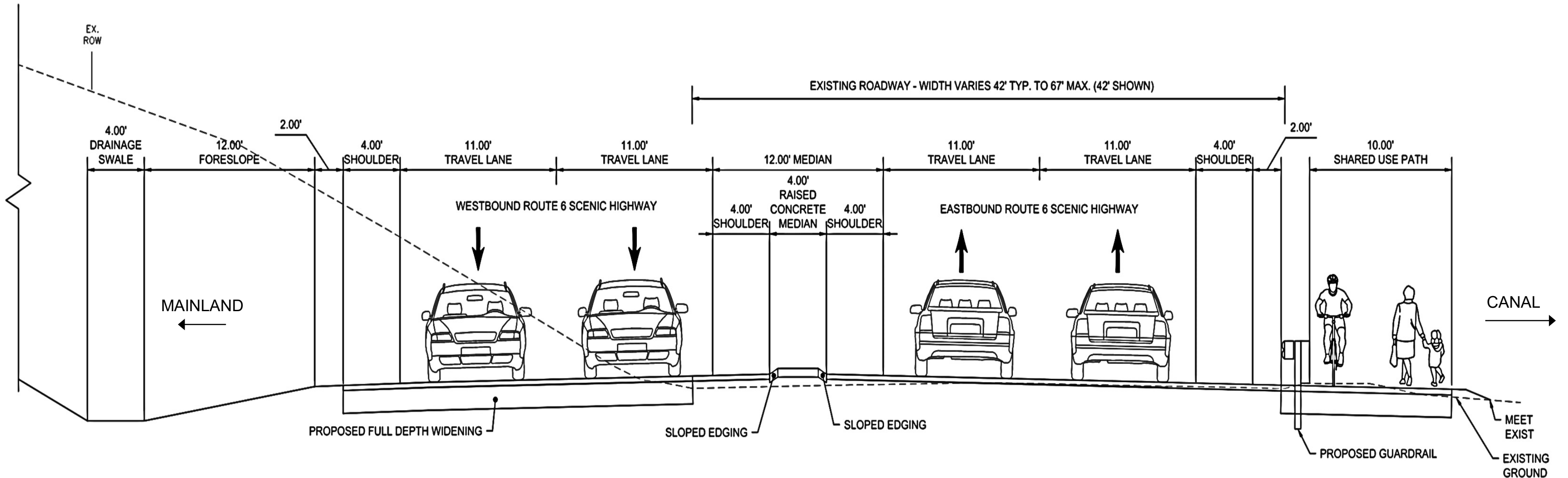
Alternative No. 3: Shared Use Path EB Side





What is the preferred alternative?

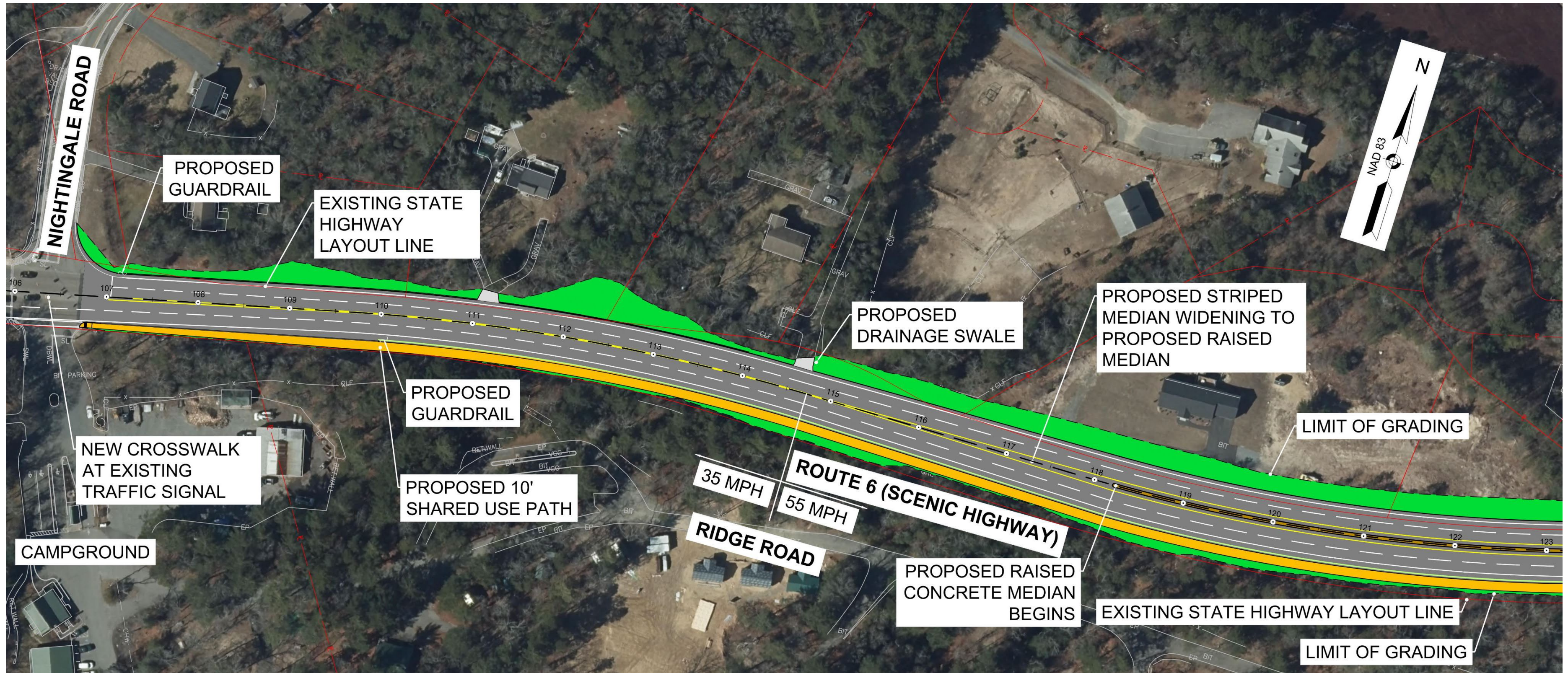
Preferred Alternative At-A-Glance Alternative No. 3



- 10' minimum width shared use path along Route 6 Eastbound
- Swale along Route 6 westbound
- Additional width for lanes and shoulders
- 4' wide raised median
- Majority of widening into westbound hillside

Preferred Alternative – Plan View

Sheet 1 of 5



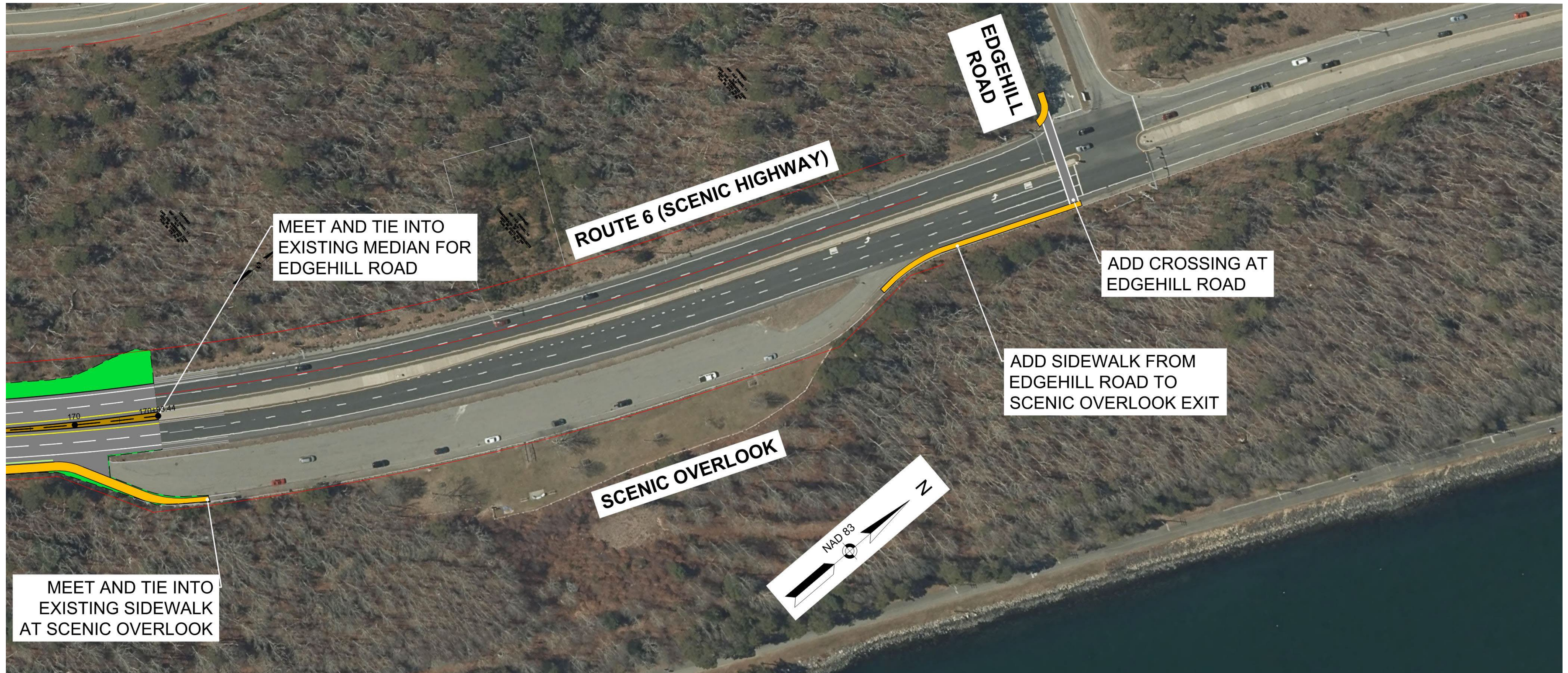
Preferred Alternative – Plan View

Sheet 2 of 5



Preferred Alternative – Plan View

Sheet 5 of 5



Polling Questions

Question 1: What design elements would you like to see incorporated in the Scenic Highway project?

Answers (select all that apply):

- A) Installation of a median
- B) Improved drainage of roadway
- C) Construction of bicycle and pedestrian accommodations

Question 2: Do you feel this project is important for the region?

Answer (select one):

- A) agree
- B) neutral
- C) disagree

Question 3: Do you feel separating traffic with a median will enhance safety on the roadway?

Answer (select one):

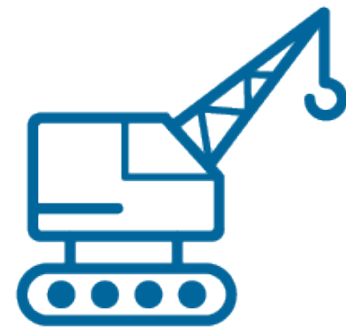
- A) agree
- B) neutral
- C) disagree



What are the environmental, cultural resource, and community impacts?

Environmental Impact Evaluation

- **Wetlands and Biological Resources**
 - No impacts to regulated wetlands
- **Recreational and Cultural Resource Areas**
 - No impacts to Inventoried Property
 - No impacts to protected open space
- **Community Representation**
 - Expanded analysis of project impacts on all populations including impacts on low-income, minority and limited English proficient populations
 - Advanced project notice and opportunity for meaningful public engagement



What is the construction approach and how will road users be affected?

Construction Staging and Traffic Impacts

- Staged construction (4 stages)
- 4 lanes maintained throughout all stages
- No detours anticipated



Our next steps



Public Outreach
Spring 2022



25% Design
Submission
Summer 2022



Design Public Hearing
Fall 2022



Project Advertisement
Anticipated Winter
2025



Begin Construction
Anticipated Spring
2025



**How will we
keep you
informed?**

How to reach us?

- **Submit Comments or Inquiries via E-Mail:**

MassDOTProjectManagement@dot.state.ma.us

Subject: MassDOT Project File No. 606082
Route 6 (Scenic Highway) Corridor Improvements





Questions and discussion

Questions and answers



- “Raise your hand” to be unmuted for verbal questions.



- Submit your questions and comments using the Q&A button.



- Please state your name before your question.



- Please share only 1 question or comment at a time, limited to 2 minutes, to allow others to participate.



- To ask a question via phone, dial *9 and the moderator will call out the last 4-digits of your phone number and unmute your audio when it is your turn.



- Please take a few minutes to complete the survey after the meeting to let us know how your experience was with this virtual meeting.

All questions and comments are subject to disclosure for public records. Please use these functions for project related business only.



Thank You

Route 6 (Scenic Highway) Corridor Improvements

Virtual Meeting | May 18, 2022 | 7:00 PM

Project No. 606082