



GREEN LINE EXTENSION PROJECT



massDOT
Massachusetts Department of Transportation



GLX Community Working Group
Monthly Meeting
May 5, 2020

Agenda

Welcome & Introduction

- Terry McCarthy, MBTA Deputy Program Mgr., Stakeholder Engagement

Construction Update

- Jeff Wagner, GLXC Public Involvement Manager



GLX Bridge Closure Snapshot

Target Dates:

- **School Street Bridge**

- Recent resequencing of bridge closure expected to produce earlier reopening this winter. New opening date to be announced.

- **Lechmere Viaduct Demolition and Replacement Bus Service**

- Begins May 24, 2020

- **Washington Street Bridge / Underpass**

- Permanent reopening May 31, 2020*

- **Broadway Bridge**

- Single lane opening July 15, 2020*

** Schedule subject to change due to potential COVID-19 related impacts*



MBTA - GLX COVID-19 Update

GLX construction has continued project-wide at a robust pace throughout the pandemic.

- Ongoing construction productivity will depend heavily on the continuity of the materials supply chain the labor force.
- Notable areas of concern include:
 - Concrete suppliers
 - Union labor
 - Steel Rebar manufacturers





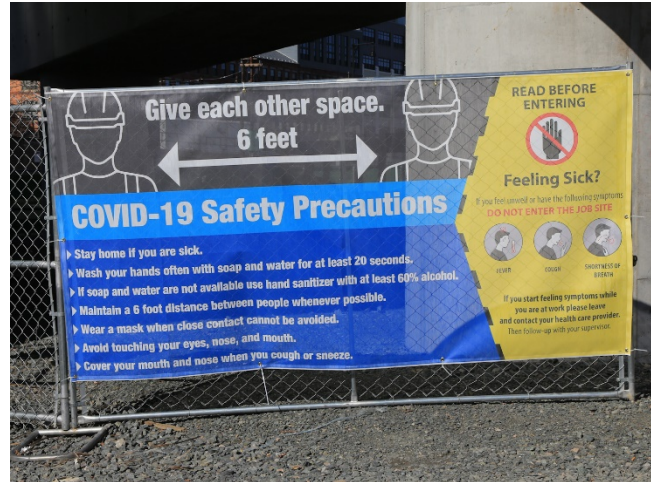
GLXC Construction Update



massDOT
Massachusetts Department of Transportation



Safety: COVID-19 Protection



Union Square Station Area

- Foundation construction continues at future Union Square Station



Lechmere Area

- Discontinuation of trolley service and start of bus service on May 24
- Demolition of old viaduct to take place on weekends starting in late May



Lechmere Area cont

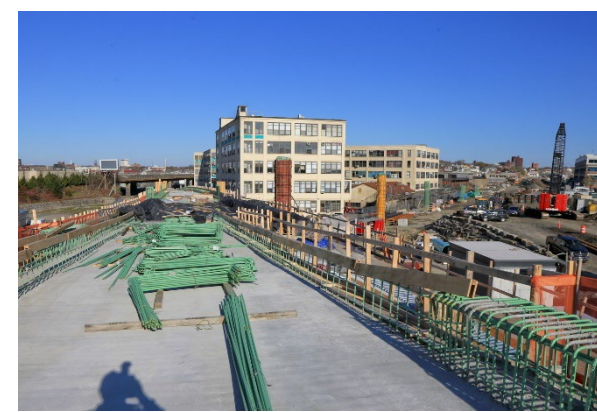
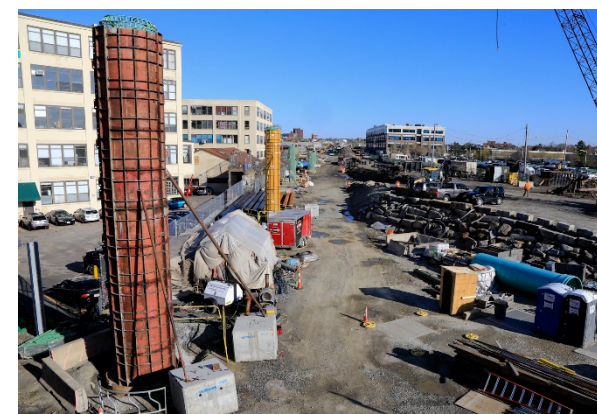
- Steel placement continues to progress north across Water St. and towards Superior Nut



Boston Engine Terminal Area



- Deck construction, power traction substation and Community Path foundation work progressing over the Boston Engine Terminal tracks



Vehicle Maintenance Facility

- Framework around the Transportation Building taking shape
- Posts installed for gantry



Vehicle Maintenance Facility cont

- Retaining wall installation continues around the VMF perimeter
- Foundation work on VMF and Transportation Building underway



East Somerville Station Area



- The East Somerville Station continues to develop
- Washington abutment construction just prior to steel placement
- Underpass to open by end of May 2020*



** Schedule subject to change due to potential COVID-19 related impacts*



massDOT
Massachusetts Department of Transportation



East Somerville Station Area cont.



- The East Somerville Station continues to develop
- Washington abutment construction just prior to steel placement
- Underpass planned to reopen permanently by end of May*



* *Schedule subject to change due to potential COVID-19 related impacts*



massDOT
Massachusetts Department of Transportation



Retaining Wall Construction

- Retaining Wall work continues to advance between Cross St. and McGrath Hwy
- Extremely tight section along Chester Ave.



Medford St. Bridge Modification



- Crews at street level drilling foundation for new abutment
- At track level workers reinforcing the existing abutment that will become center pier



Future Gilman Square Station Area



- Wall drilling continues near pedestrian bridge
- Removing soil that supported drilling operations
- Traction Power Substation construction continues near the bridge



School Street Bridge Modification



- School St. closure was resequenced to begin in April (approximately one month earlier than planned). New opening date to be announced.
- Drilling for the new abutment planned for later this month



Retaining Wall Construction (2)

- Retaining wall construction between School St. and Sycamore. Large temporary earthen wall built to support drill rig and equipment
- Community Path will be on top of the wall & behind homes on Montrose St.



Retaining Wall Construction cont.

- Retaining Wall construction near Maxwell's Green
- Foundation drilling started in April



Ball Square Station Area

- Steel has been placed across both spans of Broadway Bridge with deck construction underway



Ball Square Station Area cont

- Track shift between Lowell/Cedar St to Harvard St. planned for May.



Ball Square Station Area cont 3

- Traction power substation foundation & utilities work is progressing



Medford/Tufts Station Area

- Foundation drilling for the retaining wall along Boston Ave.



Outreach – Hotline Responses

- **1,251** Inquiries thru Hotline, e-mail or direct contact with outreach staff project to date. 84 contacts received in April
- **1,133** actions closed out



Landscape in MBTA/GLX ROW



- Native Grass
- Low Growth and Easy to Maintain
- Stations Entrances and Community Path



Q & A

