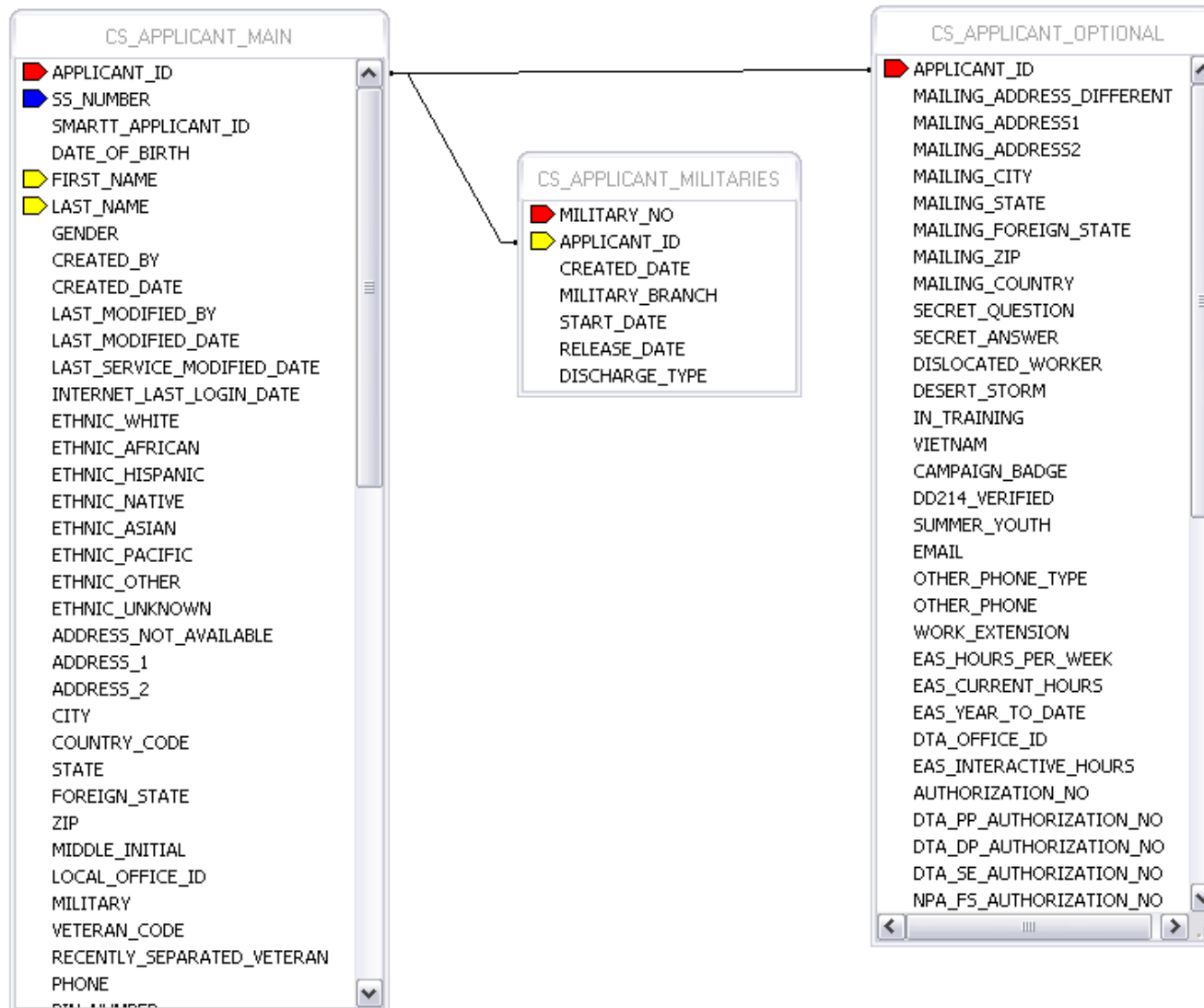


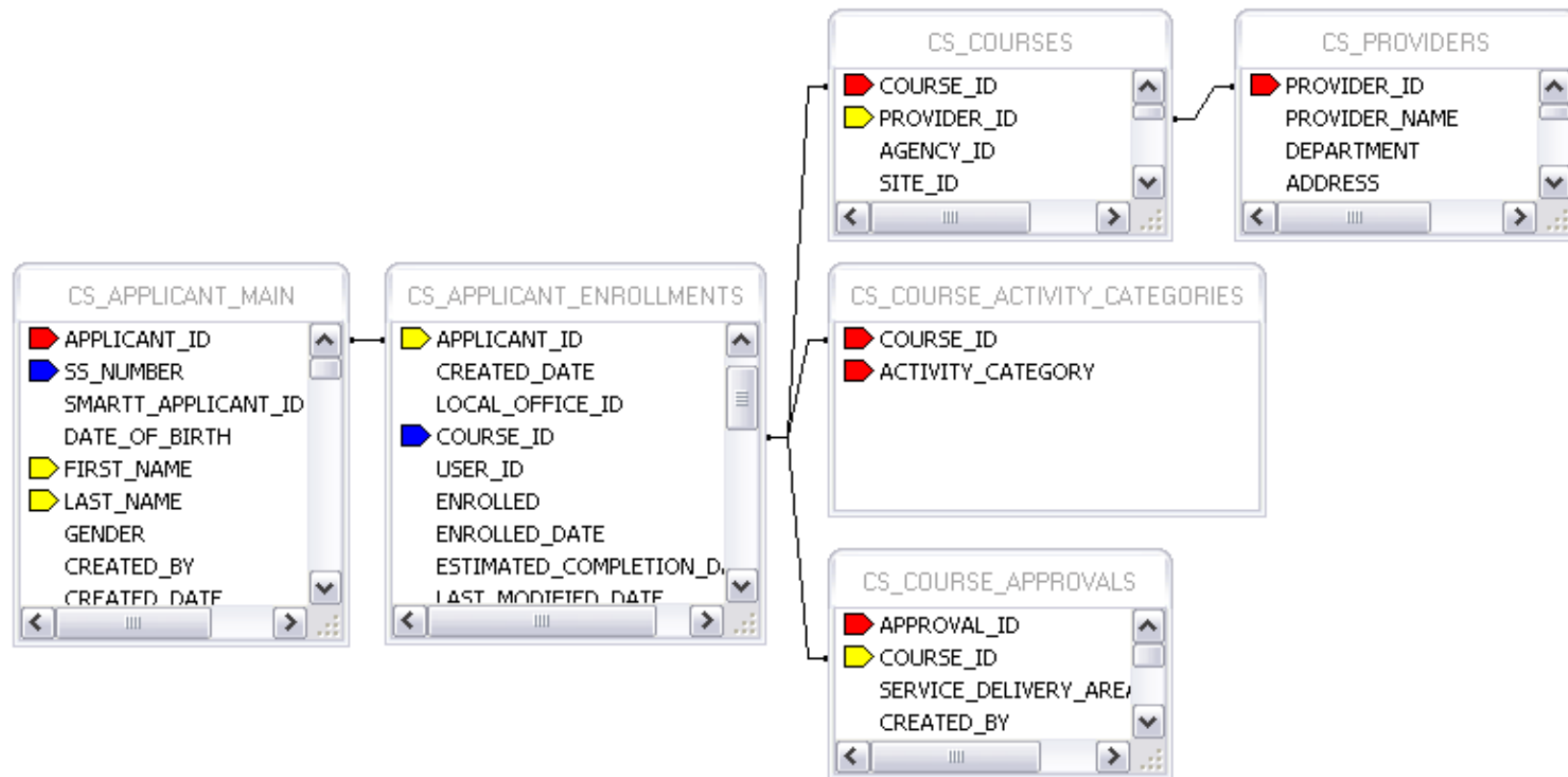
MOSES DATABASE RELATIONSHIPS/LINKAGES

VETERAN DATA TABLES



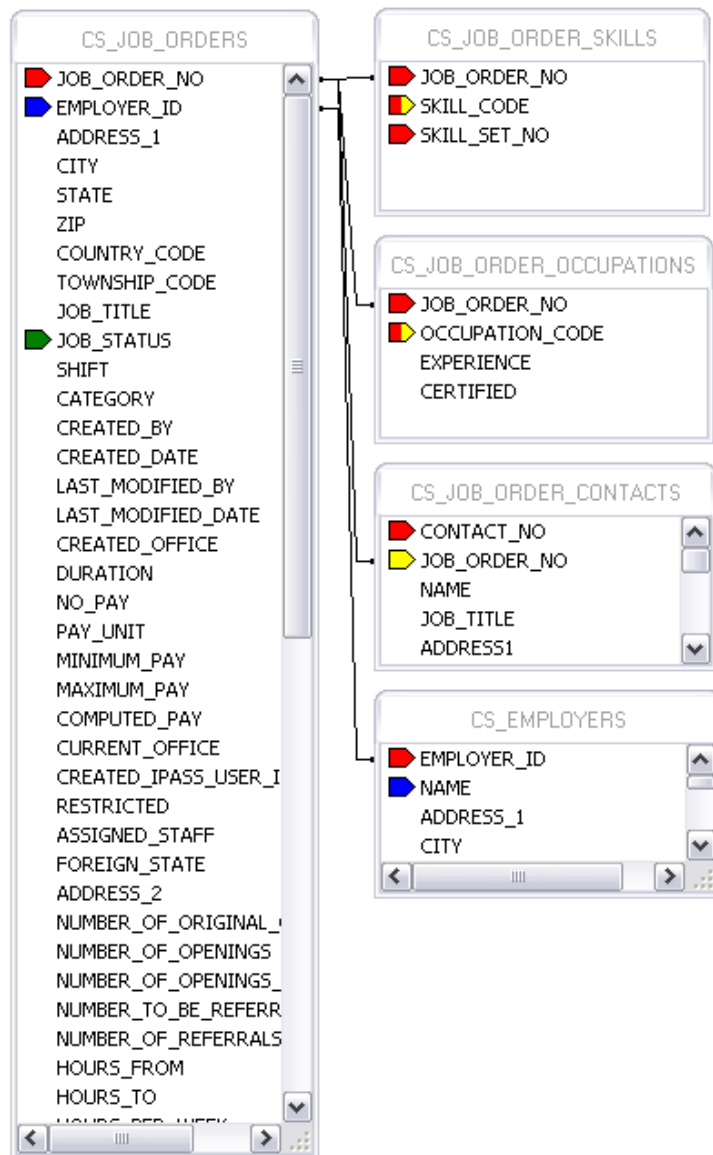
MOSES DATABASE RELATIONSHIPS/LINKAGES

COURSES/ENROLLMENTS



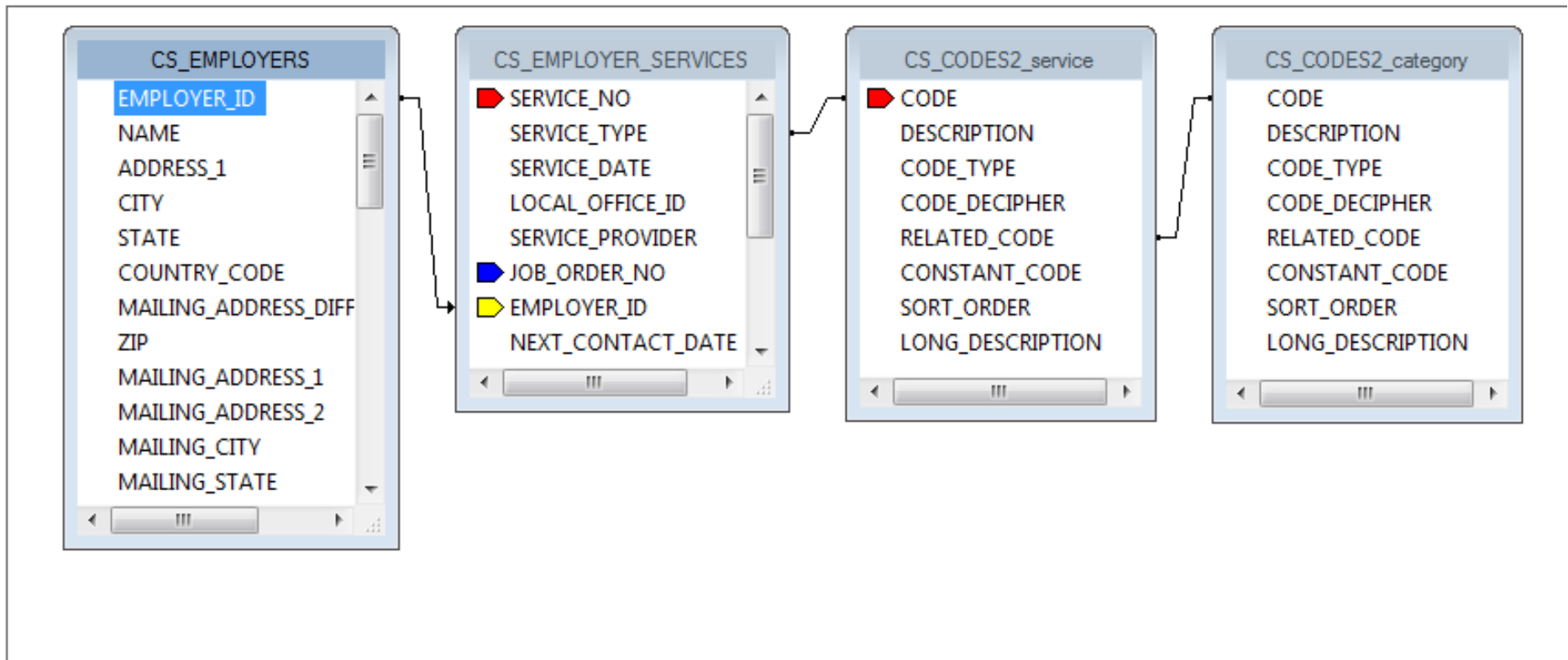
MOSES DATABASE RELATIONSHIPS/LINKAGES

JOB ORDERS



MOSES DATABASE RELATIONSHIPS/LINKAGES

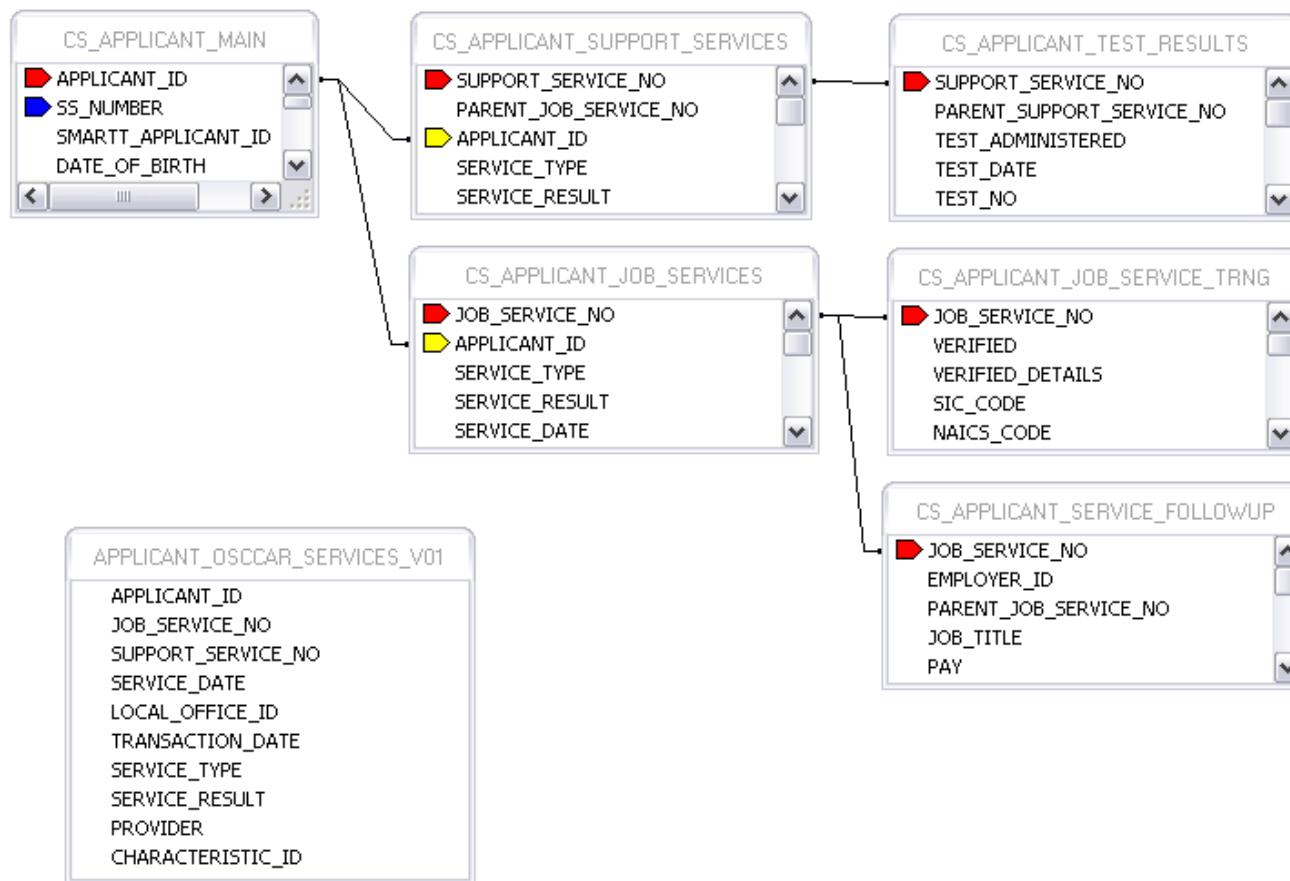
EMPLOYERS SERVICES



The `cs_employer_services.service_type` can be looked up in the `cs_codes2` table. From the `cs_codes2` table, the *related_code* linked to another instance of the `cs_codes2` table will give you the category of the service. By grouping on the `cs_codes2_category.description` field, you can have organized employer services report.

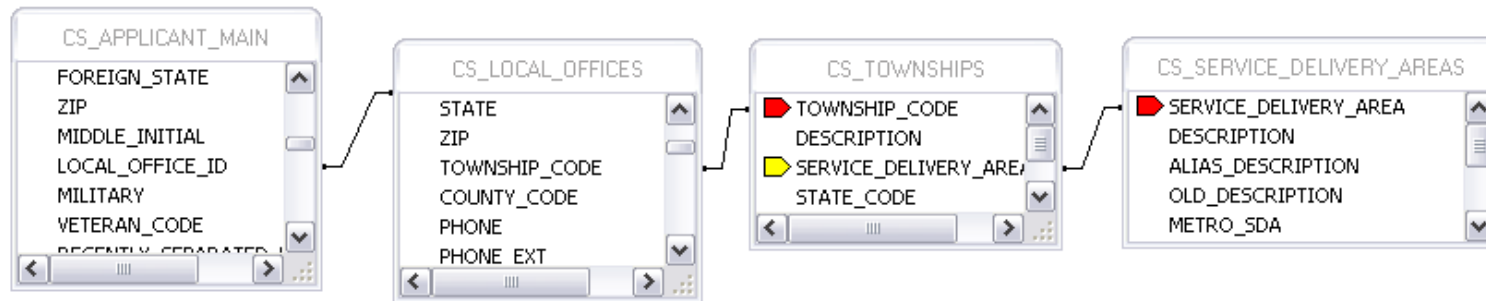
MOSES DATABASE RELATIONSHIPS/LINKAGES

APPLICANT SERVICES



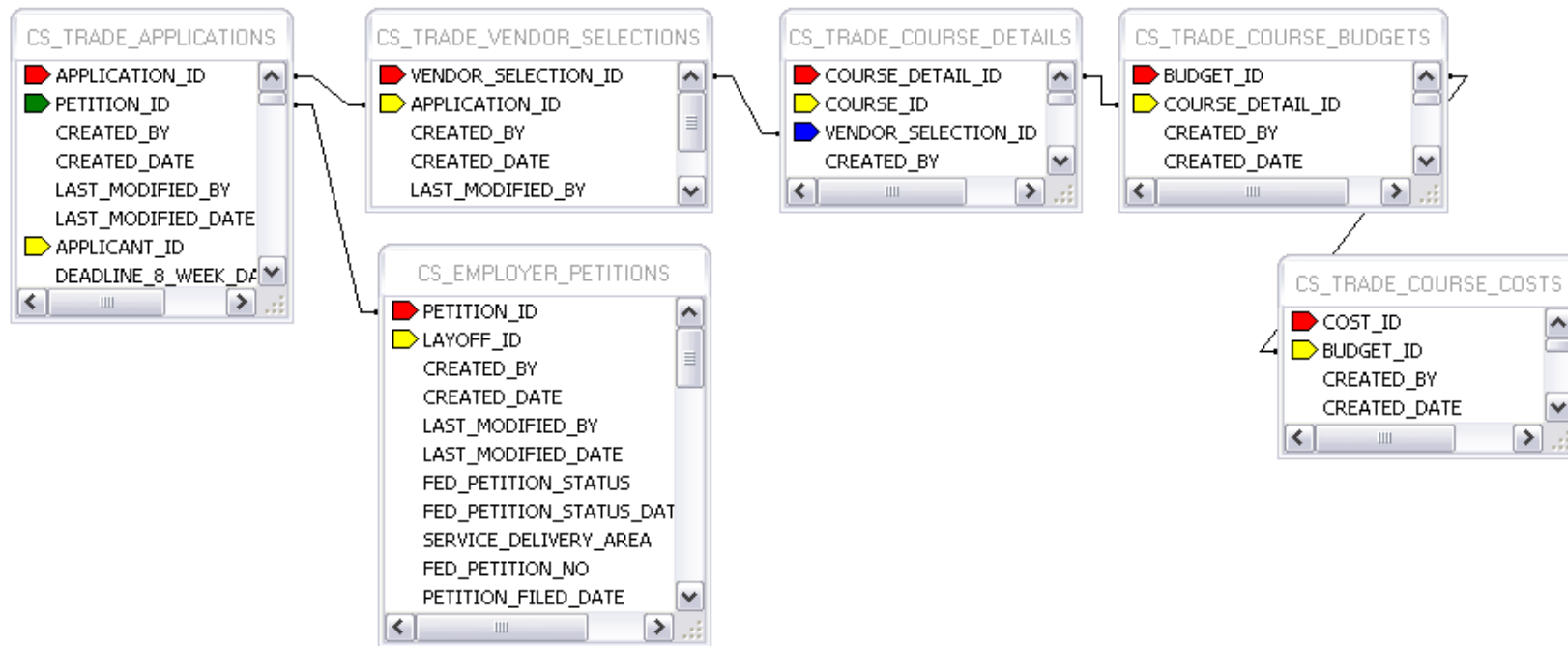
MOSES DATABASE RELATIONSHIPS/LINKAGES

LINKING TO LWIB AREA (SERVICE DELIVERY AREA)



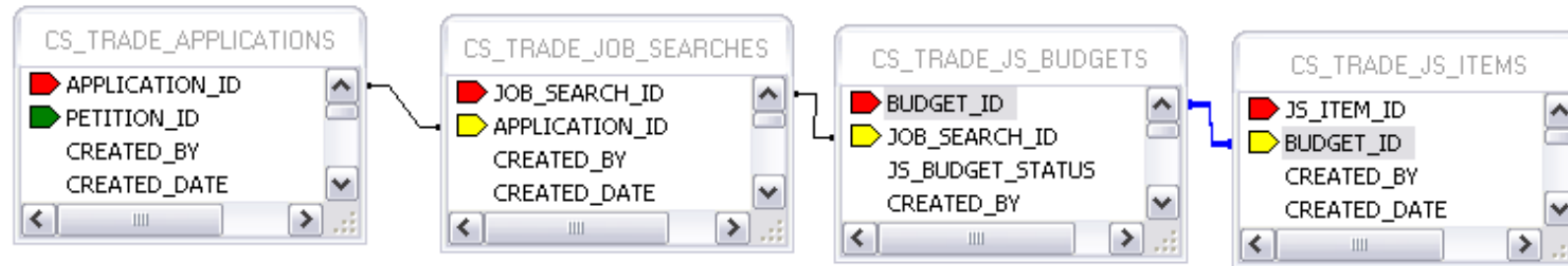
MOSES DATABASE RELATIONSHIPS/LINKAGES

TRADE/COURSES



MOSES DATABASE RELATIONSHIPS/LINKAGES

TRADE/JOB SEARCH



MOSES DATABASE RELATIONSHIPS/LINKAGES

TRADE/RELOCATION

