



The People's Priorities

Understanding what policy areas matter most to Massachusetts' DD community

March 31st, 2025



Massachusetts Developmental Disabilities Council (MDDC)



Our mission is to empower individuals with intellectual and developmental disabilities (I/DD) and their families to lead successful lives in their communities by promoting self-sufficiency, community inclusion, and opportunity.

One way we do this is through **policy change.**

MDDC Policy Team



Jennifer Bertrand
Deputy Director,
MDDC



Gyasi Burks-Abbott
Policy Committee
Chair



Joshua Gladstone
Disability Policy
Specialist



Kaitlin Stober
Policy Research
Associate

MDDC Legislative Priorities Survey



MDDC is focused on our community here in Massachusetts.

We created a survey that asked people to share their opinions about what policy topics are important to them.

You shared with us, now we're sharing what we learned with you!

Who took our survey?

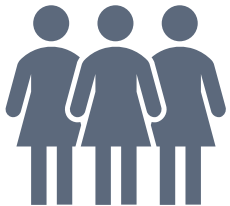


A total of **400** people took our survey

371 took it in English
19 took it in Spanish

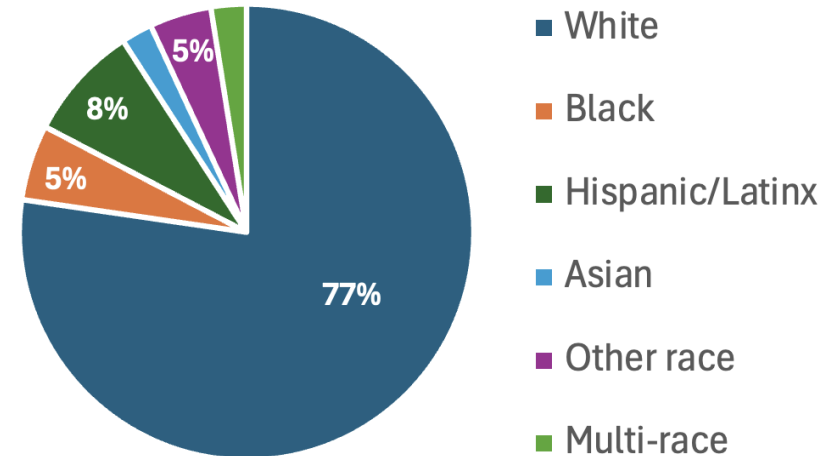
HELLO

¡HOLA



80% of participants were female

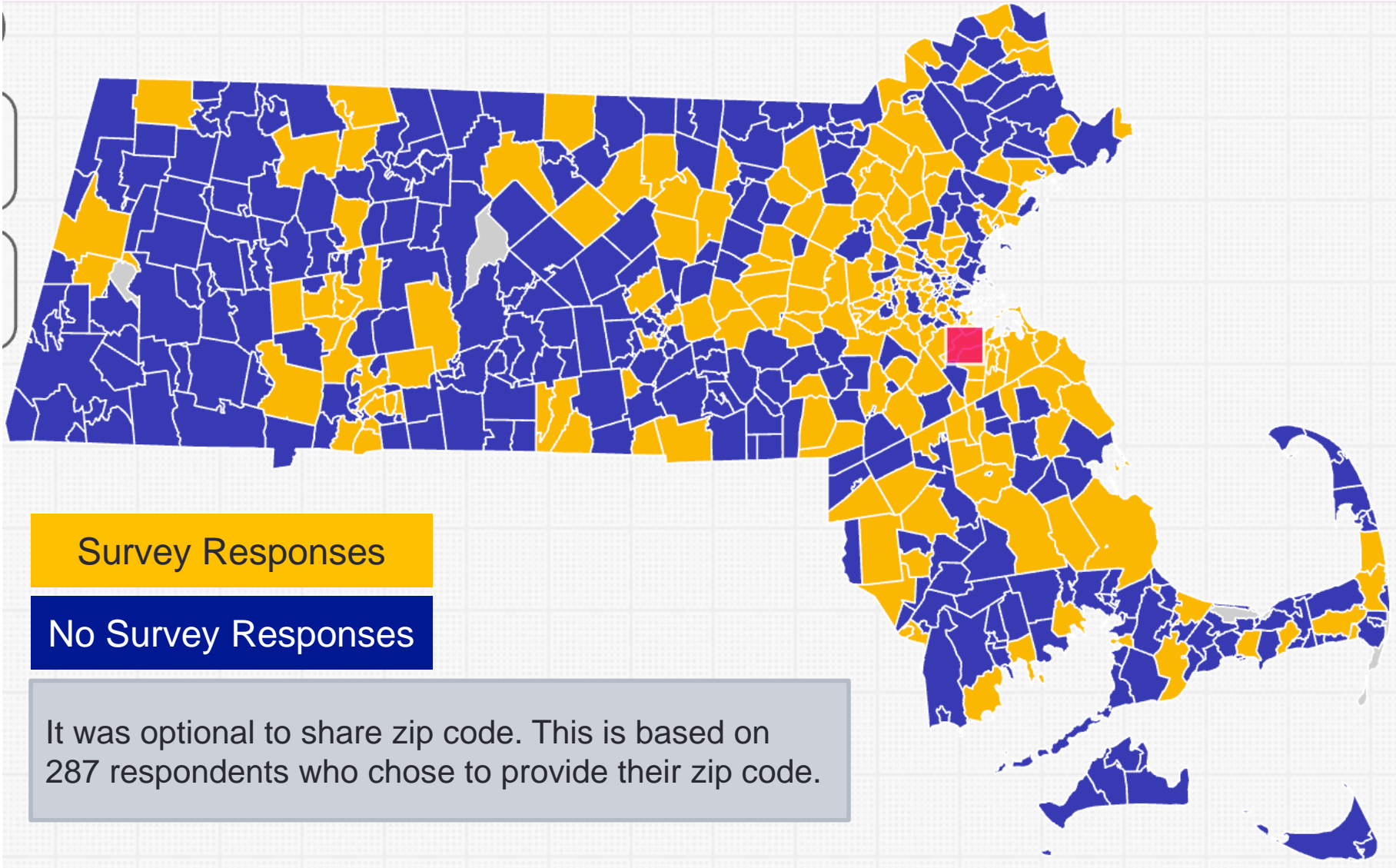
77% of participants were white, **5%** black, and **8%** Hispanic



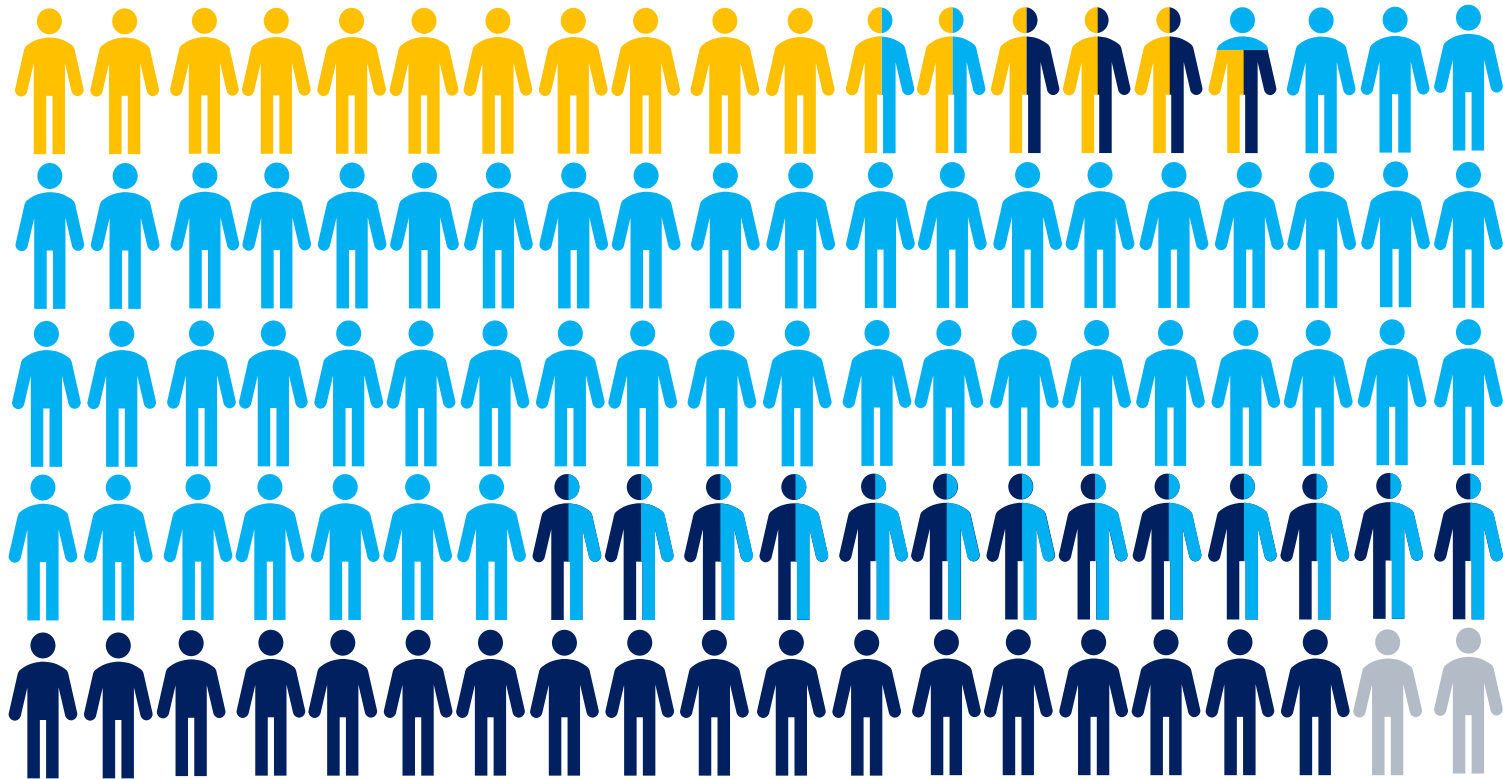
151 participants are interested in working with MDDC to provide testimony about future bills



Geographic Spread



Who took our survey?



17.5%

reported having a
developmental
disability (DD)

66.5%

reported being a
family member

35.25%

reported being
professionals in the
DD field

1.75%

reported being some
"other" category

What did we ask about?



Housing



Guardianship



Healthcare



HCBS



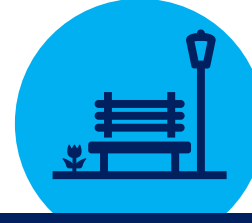
Diversity and
Equity



Family
Support



Direct Care
Workforce



Community
Participation



Self-
Direction



Transportation



Employment



Safety

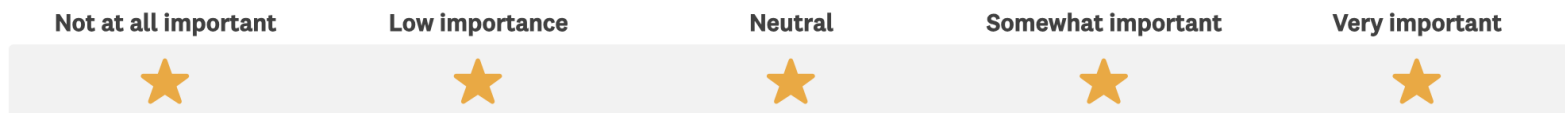


Education

What topics were most important?

People shared how important different topics were to them in two different ways:


1. First, they rated *each* topic area on a 5-point scale from “Not at all Important” to “Very Important.”



We created an average rating for each policy topic area.

What topics were most important?


(Average rating for each topic)



1
Rating

##

Topic



The big white star represents the OVERALL rating for each topic. This comes from everyone who took our survey.



2
Rating

##

Topic



3
Rating

##

Topic



What topics were most important?

(Average rating for each topic)



What topics were most important?

(Average rating for each topic)



What topics were most important?

(Average rating for each topic)



What topics were most important?

(Average rating for each topic)



Education



Safety and Violence Prevention

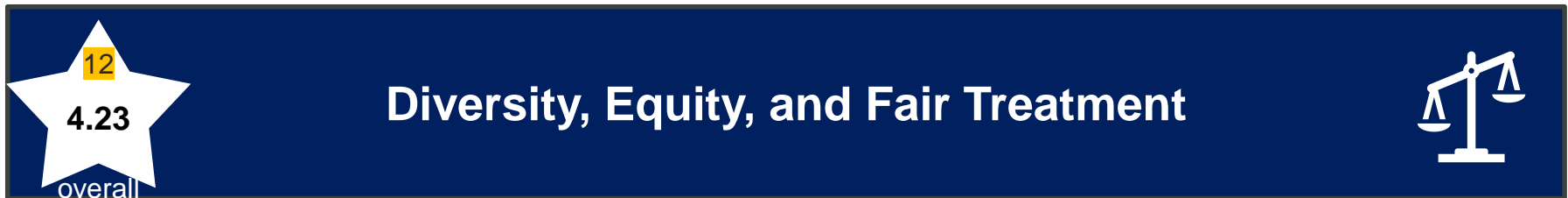


Transportation



What topics were most important?

(Average rating for each topic)



What topics were most important?

People shared how important different topics were to them in two different ways:

2. Second, they picked the 3 policy topics that are *most* important to them from the list.

* From the list below, please select the 3 topic areas that are the most important to you:

☐  Community Recreation and Social Opportunities

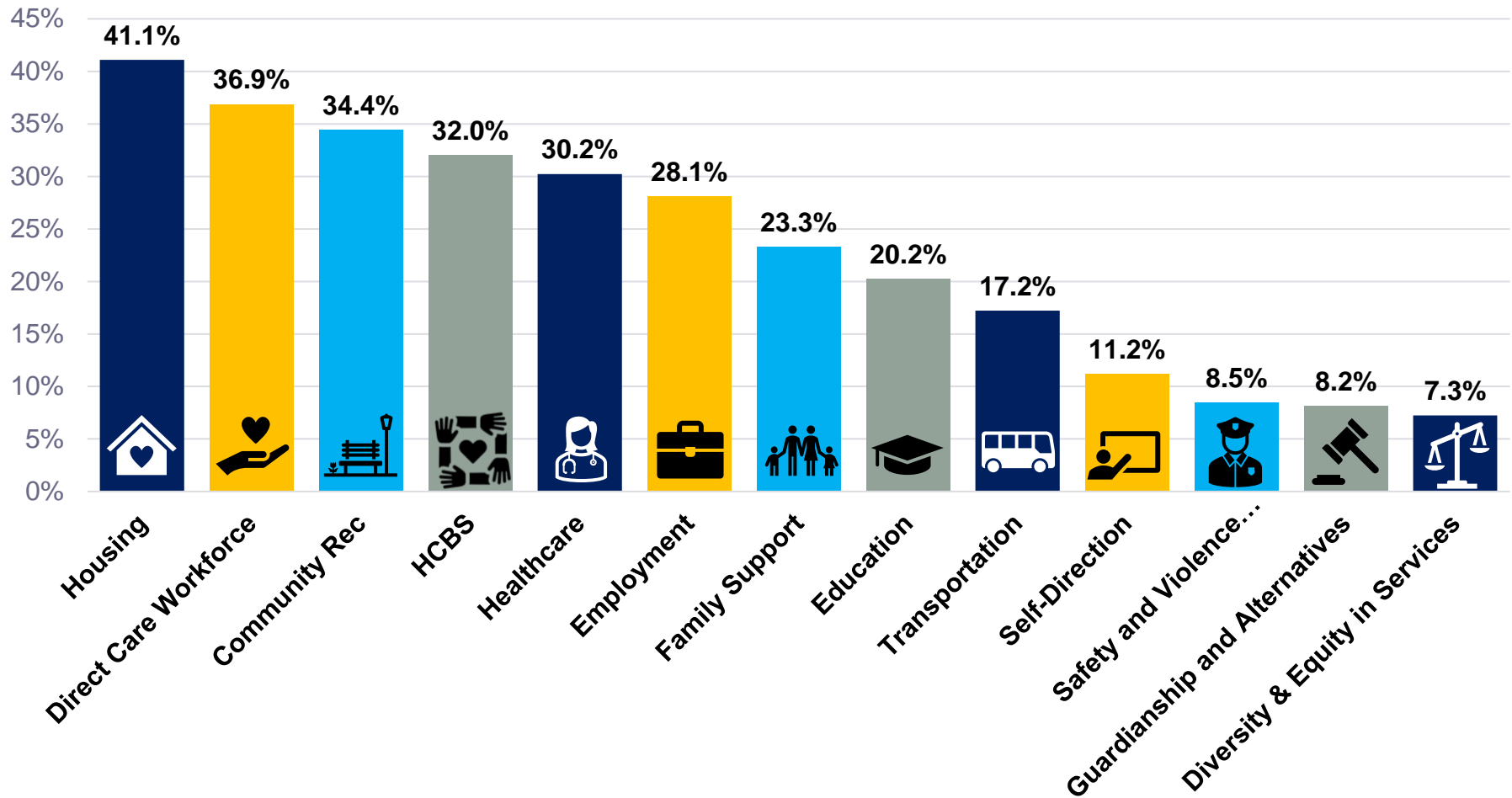
☐  Accessible and Affordable Housing

☐  Direct Care Workforce

We looked at how many people picked each policy topic as a top 3 priority.

What topics were most important?

(Percentage of people who picked a topic in their top 3 priorities)



What did we learn?

These topics are *all* important, they were all rated very highly.

Overall, 5 topics were rated as the most important:

1. Home and Community-Based Services (HCBS)
2. Direct Care Workforce
3. Housing
4. Healthcare
5. Community Recreation and Social Opportunities

Many of these topics overlap with each other!

What did we learn?

These topics are *all* important, they were all rated very highly.

Overall, 5 topics were rated as the most important:

1. Home and Community-Based Services (HCBS)
2. Direct Care Workforce
3. Housing
4. Healthcare
5. Community Recreation and Social Opportunities

**Medicaid is
top priority!**

Many of these topics overlap with each other!

What did we learn?

There were some differences in the priorities of respondents with DD, family members, and professionals in the field.

- People with DD rated **Transportation** and **Self-direction** as higher priorities than family members or professionals who work in the field.
- People with DD also rated topics like **Employment** and **Diversity, Equity and Fair Treatment in Services** much higher than other respondents.

Legislative Priorities

- We used these survey results to help choose legislative priorities for the 2025-2026 session.

[MDDC Priority Legislation](#)

[MDDC Endorsed Legislation](#)

- These priorities guide how our policy team uses our time and resources.



What's next?



Community Outreach

We want to work with you!



Resource Development

We're making informational materials so everyone can participate in advocacy.



Testimony Preparation

*Make your voice heard
(MDDC can help)!*

Keep in touch!



Jennifer.Bertrand@mass.gov



Joshua.Gladstone@mass.gov



Kaitlin.Stober@mass.gov



[Website](#)



[LinkedIn](#)



[Facebook](#)



[Twitter / X](#)



[Instagram](#)