



**Charlton-Oxford
Route 20 Reconstruction Project
Project File No. 602659**

Public Informational Meeting
January 29, 2020
Oxford High School



Meeting Agenda

01 Welcome and Introductions

05 Public Comments and Q & A

02 Project Overview

03 Project Update

04 Project Schedule

Charlton-Oxford Route 20 Reconstruction



- Limits of Project
 - Begin at Richardson Corner Rd, Charlton
 - Extend 3.2 miles east to Rte. 12, Oxford
- Approx. 26,000 vehicles/day
- Signalized Intersections, Richardson Corner, Route 56, and Route 12

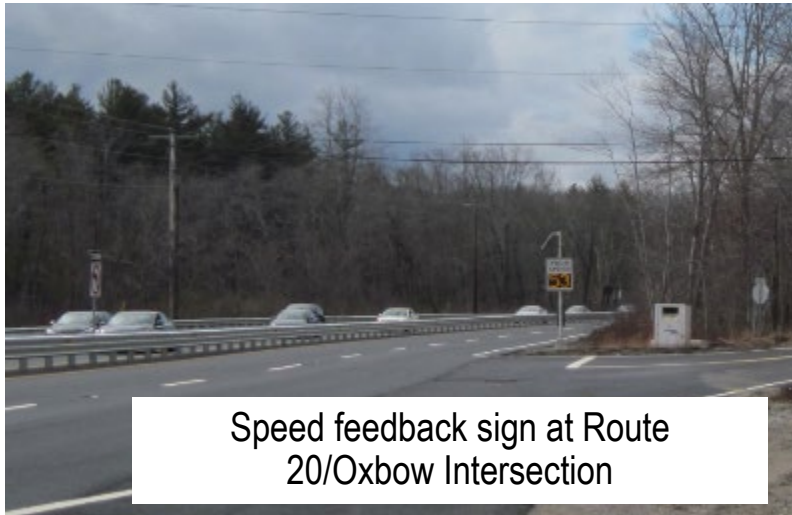
Existing Conditions

- West of Route 56 – Corridor lined primarily with commercial/industrial businesses
- East of Route 56 – Residential pocket community, Thayer Pond Condos
- Two 11-foot lanes each direction with 1 foot outside shoulders
- Double yellow centerline painted over rumble strip and stanchions
- Median guardrail along horizontal curve, west of Oxbow Road



Safety Improvement Measures

- Curve Near Oak Drive/Oxbow Road
 - Widened and resurfaced the roadway 3-6 feet each side
 - Double faced three-beam median guardrail
 - Permanent speed feedback signs
 - Dynamic, lighted curve warning signs and chevrons
 - Accident reports indicate the guardrail is preventing vehicular travel into oncoming traffic



Speed feedback sign at Route 20/Oxbow Intersection



Route 20 and Town line looking east



Route 20 Curve at Oak Drive looking east

Project Purpose

“The purpose of the project is to improve safety, geometry and traffic operations in the project corridor.”

Draft Environmental Impact Report, November 2017

- Dividing the corridor by adding a median/barrier
- Improving alignment of the roadway corridor
- Improving the operations of signalized intersections



Route 20 at Route 56 looking west

Value Engineering Study

MassDOT conducted a Value Engineering (VE) Study to identify modifications to the previous design that will maintain the project benefits and reduce costs and impacts.

Several major project changes

- Reduce the proposed roadway width
- Eliminate the quadrant roadway and maintain a traditional intersection at Route 56
- Reduce the horizontal and vertical alignment changes

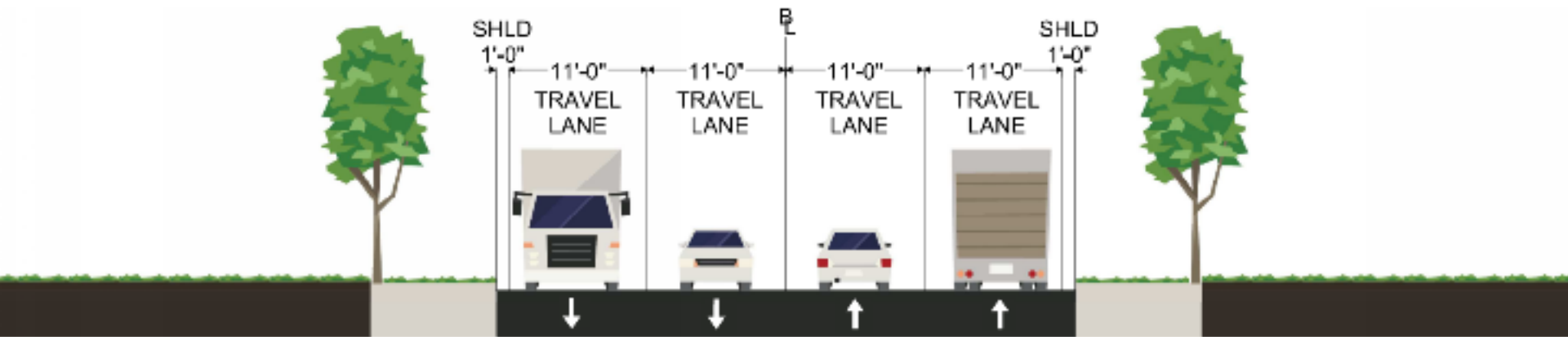
Project savings

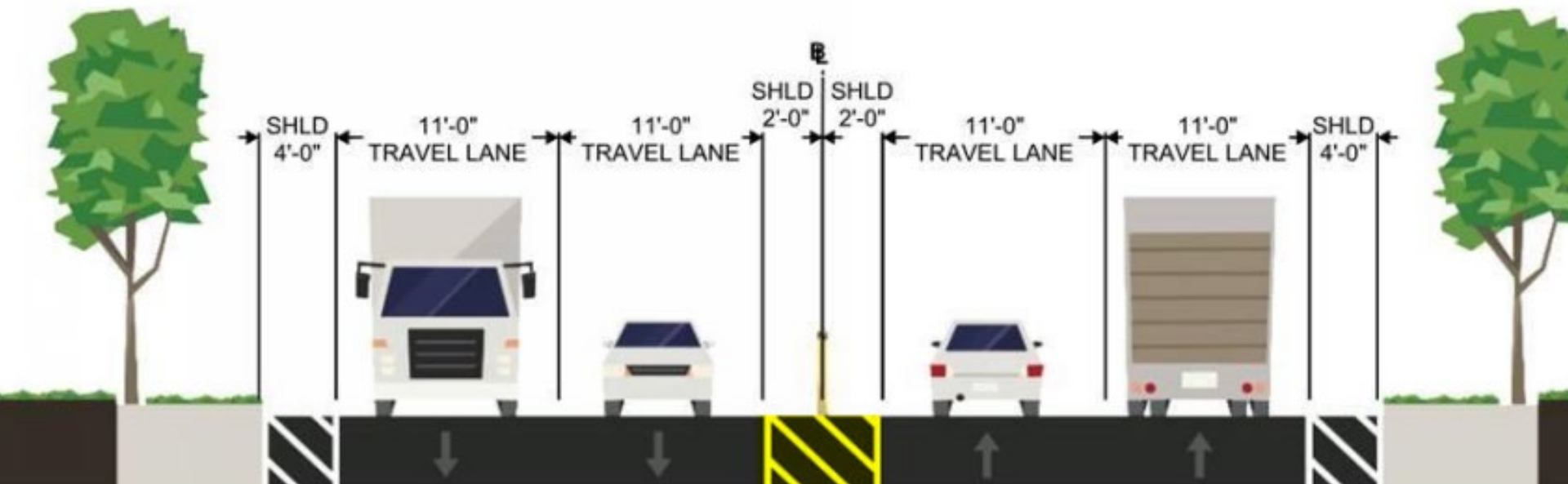
- Less impacts to resource areas and private property
- Reduces the scope of work and duration of construction
- Maintains the safety improvements of the original design



Route 20 at Route 56 looking east

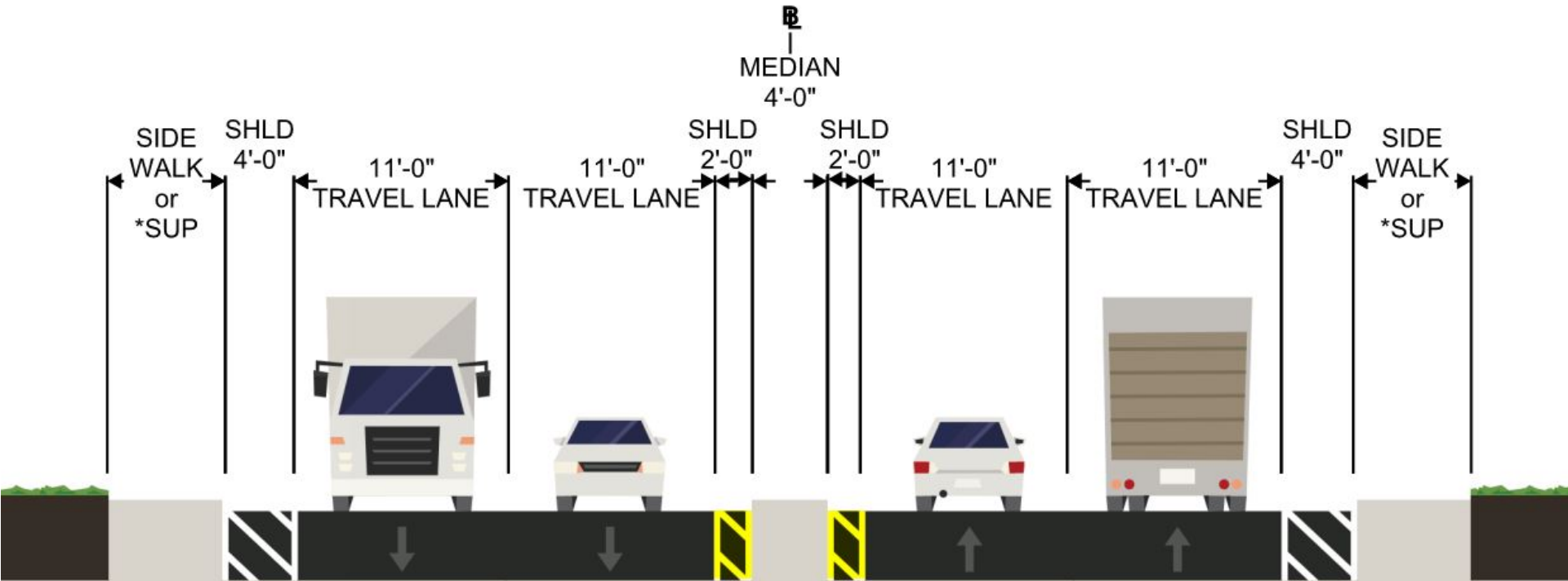
Existing Cross Section





Proposed Cross Section (Richardson's Corner to Rte. 56)

- Improved roadway surface and widening
- Fixed concrete median barrier from Richardson's Corner to Route 56
- Roadway alignment improvements
- Emergency "Pull Off" Areas

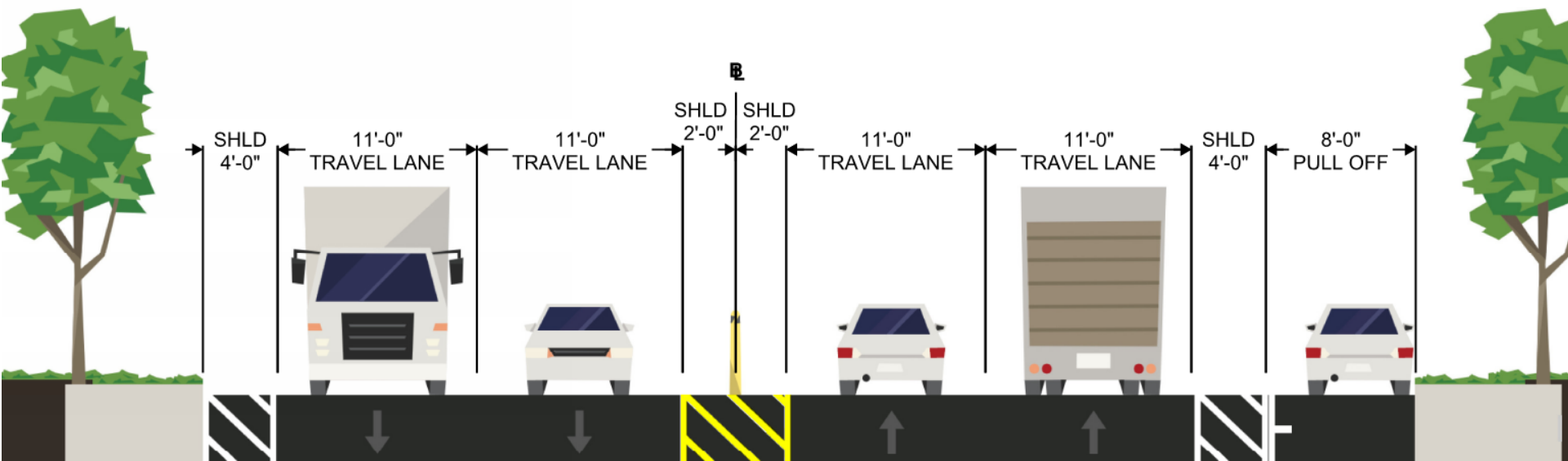


Proposed Cross Section (Rte. 56 to Rte. 12)

- Improved roadway surface and widening
 - 4' wide raised median with intermittent guardrail at curves from Rte. 56 to Rte.12
 - Roadway alignment improvements
 - Sidewalk/Shared-Use Path (SUP) at Rte. 56 intersection and along Rte. 20 from Rte. 56 to Rte.12
 - Emergency "Pull Off" Areas
- * Shared-Use Path (SUP)

EMERGENCY “PULL OFF” AREAS

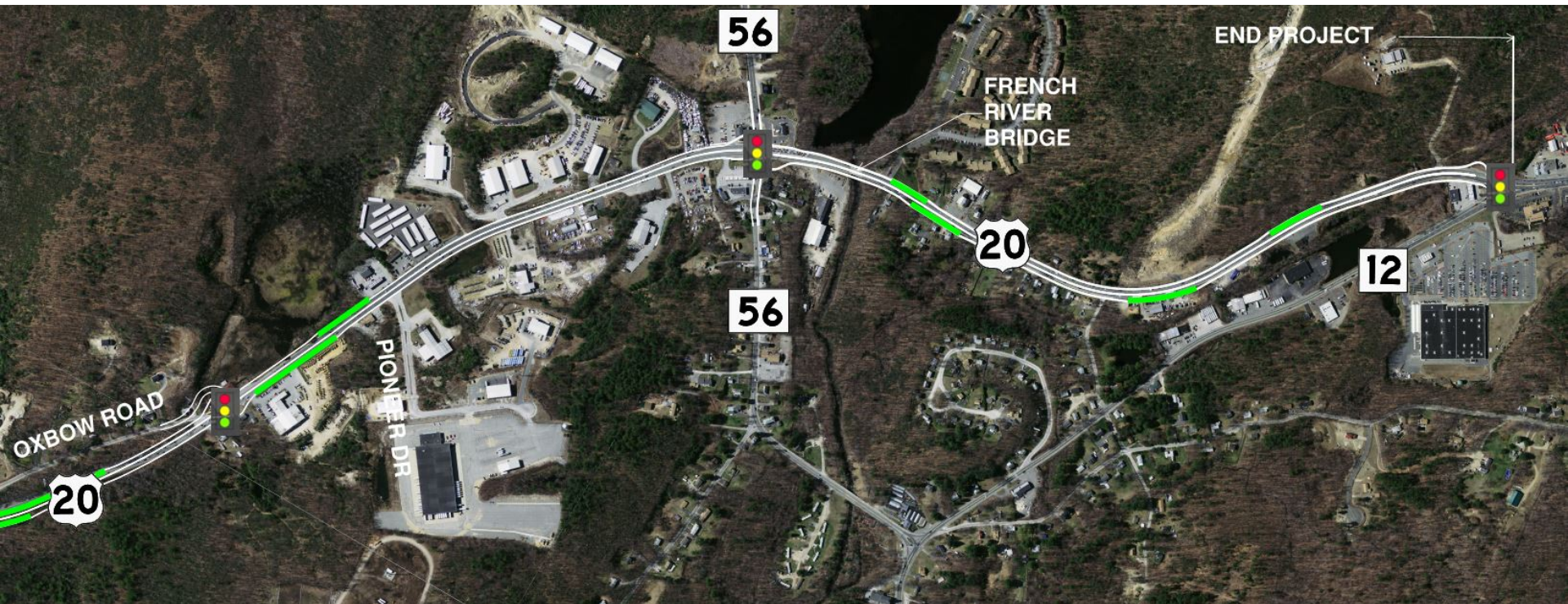
- Emergency Pull Off Areas are locations designed to provide additional shoulder width for workers, traffic enforcement, and vehicle breakdowns
- Two meetings were held with emergency professionals from Charlton and Oxford to determine beneficial locations to implement pull off areas
- Pull off locations will be provided along Route 20 in areas that have minimal impacts to private properties and wetlands



EMERGENCY “PULL OFF” AREAS (Richardson’s Corner to Pioneer Drive)



EMERGENCY “PULL OFF” AREAS (Oxbow Road to Route 12)



Proposed Project Improvements

Richardson's Corner to Route 12

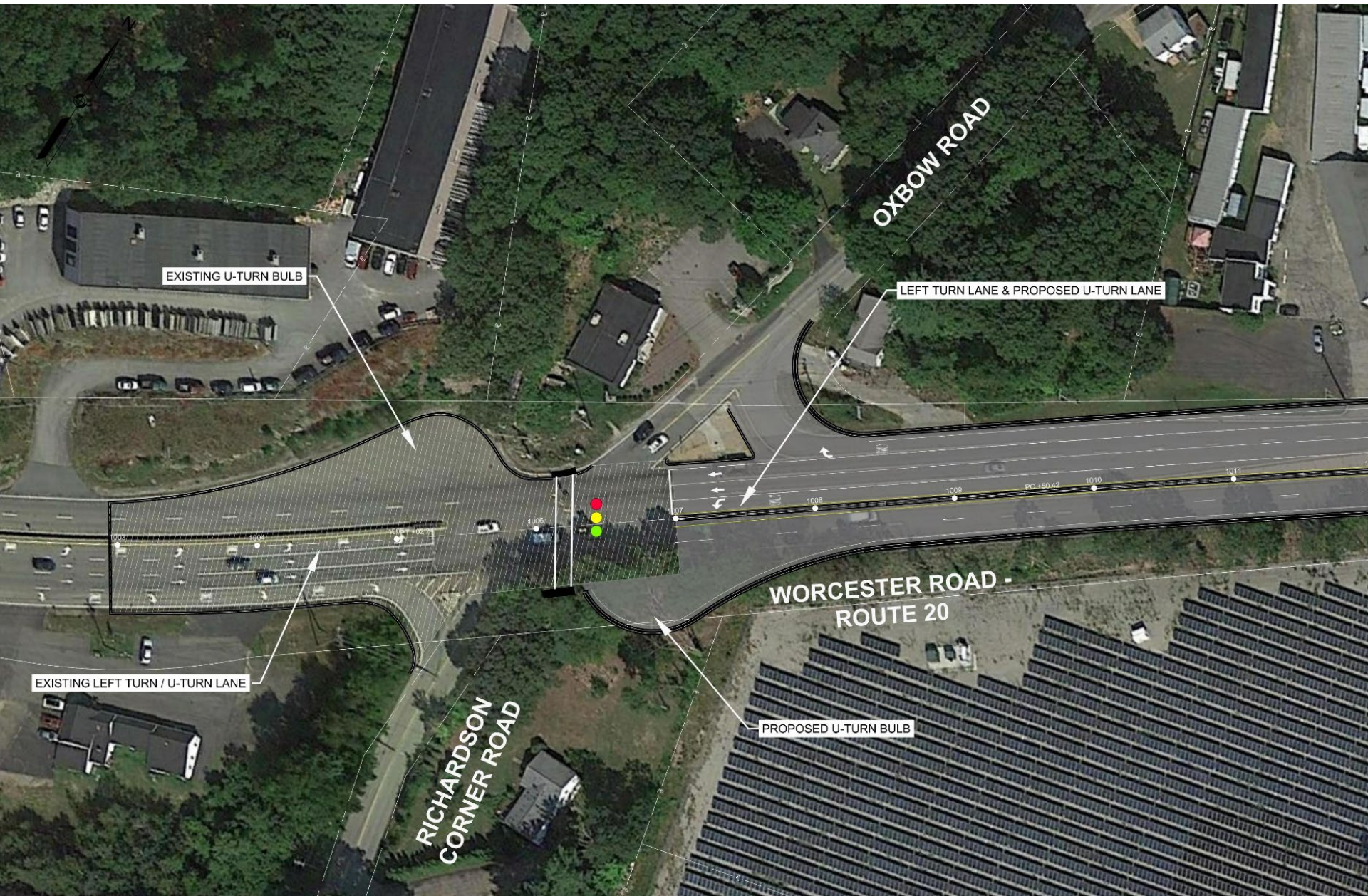


- Bridge improvements
 - Little River
 - French River
- Full U-turn locations at signalized intersections
 - Richardson Corner
 - Oxbow Road
 - Route 56
 - Route 12

Richardson Corner Road Intersection (Existing Conditions)



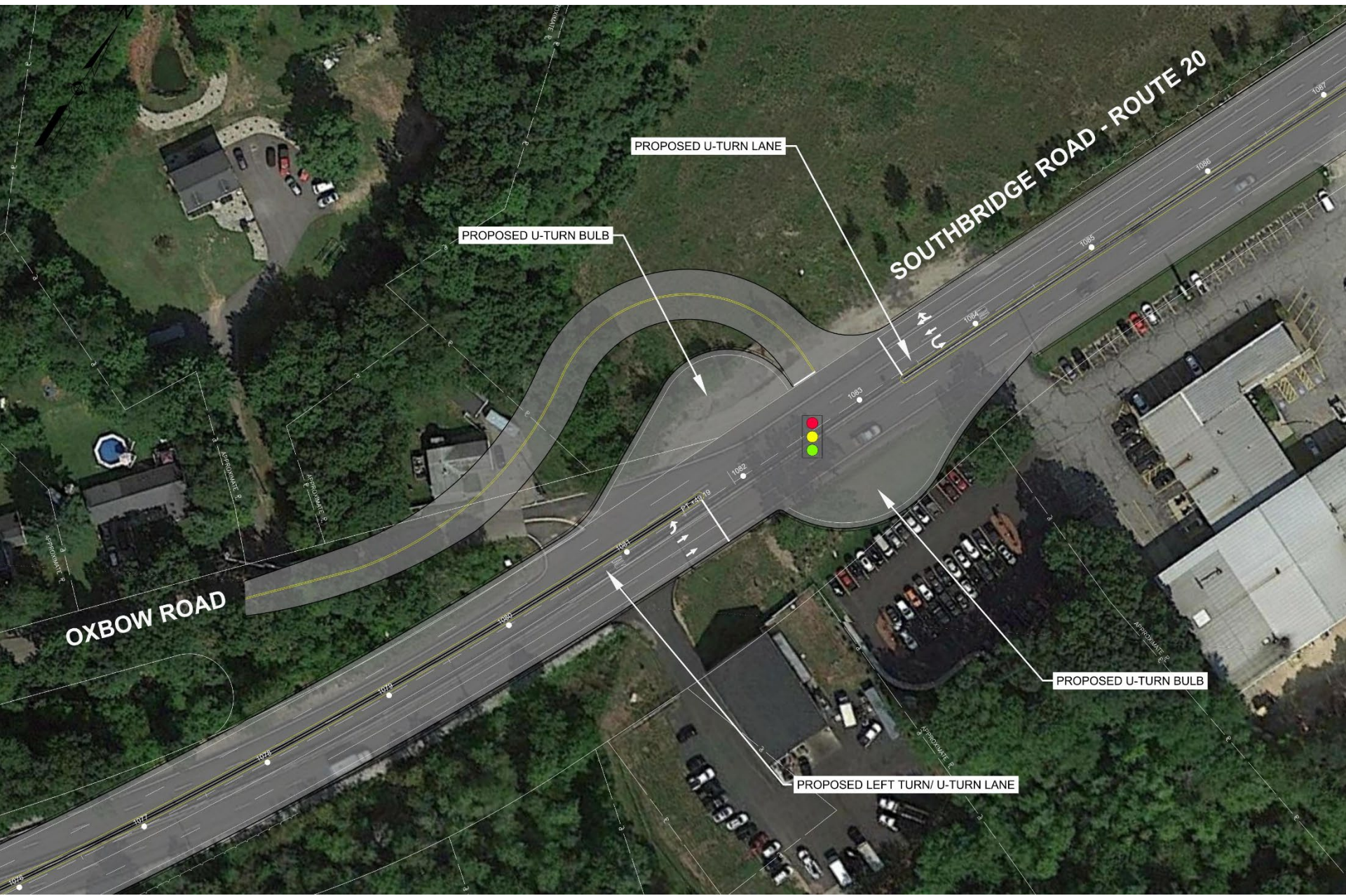
Richardson Corner Road Intersection (Proposed Conditions)



Oxbow Road Intersection (Existing Conditions)



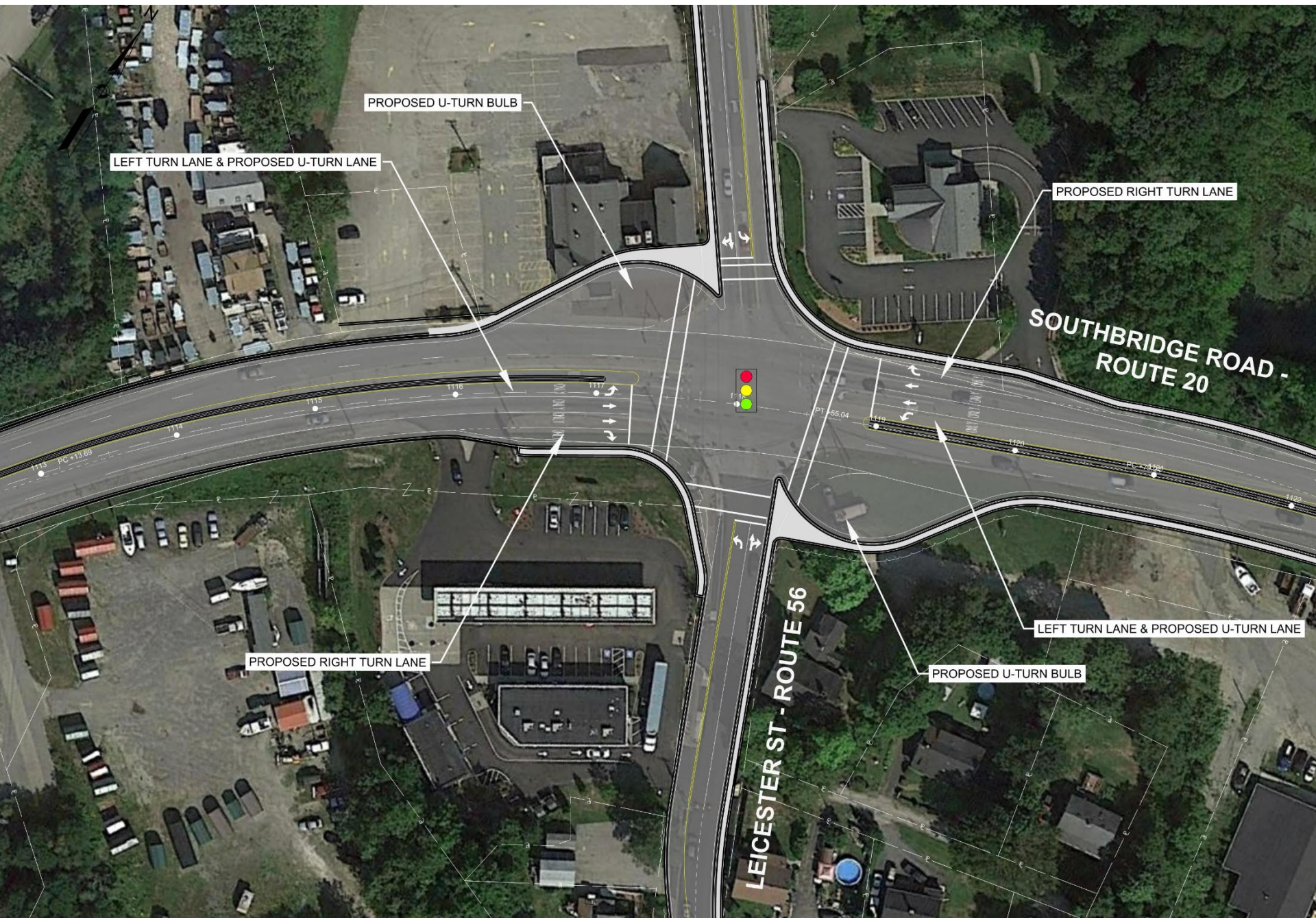
Oxbow Road Intersection (Proposed Conditions)



Route 56 Intersection (Existing Conditions)



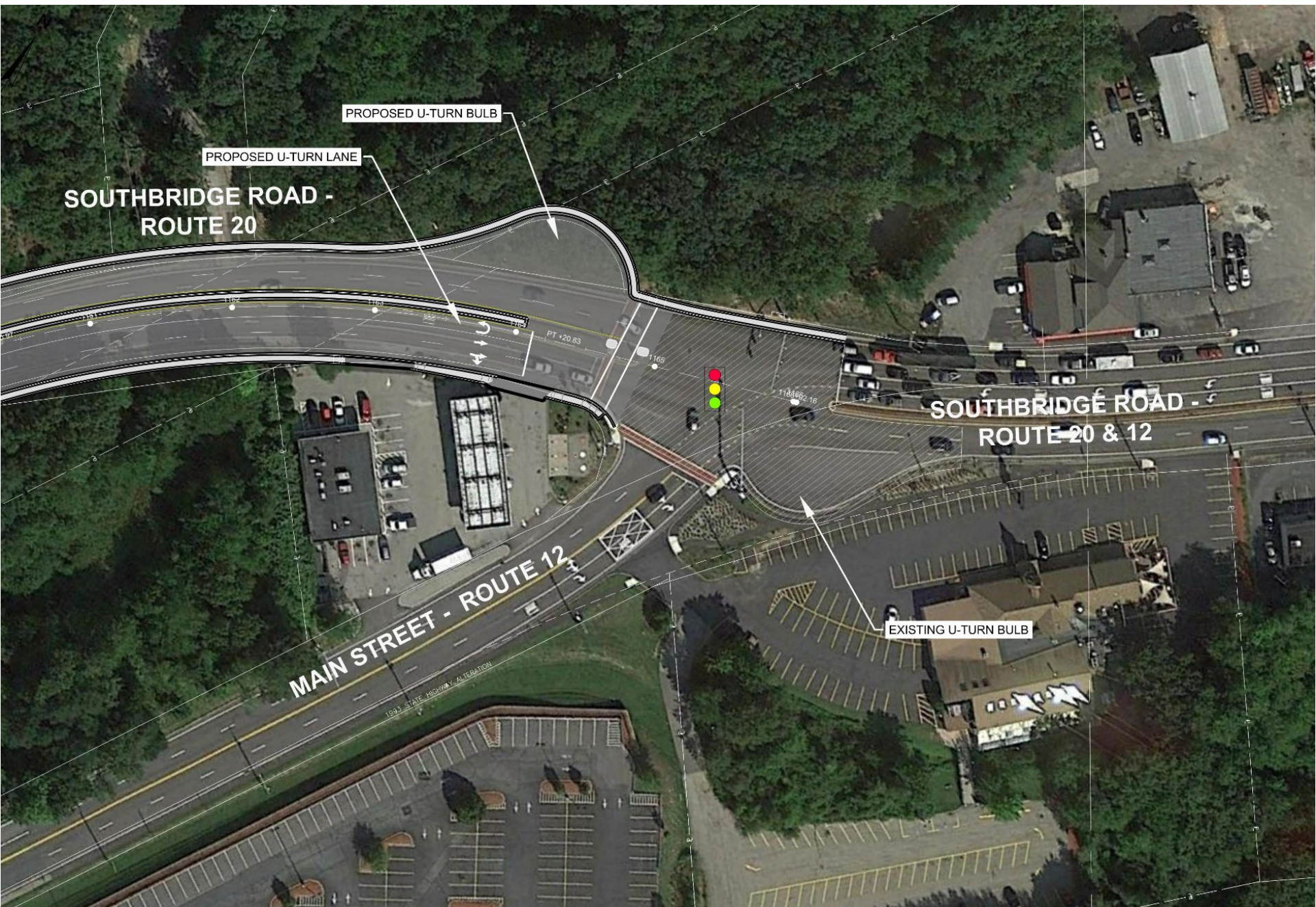
Route 56 Intersection (Proposed Conditions)



Route 12 Intersection (Existing Conditions)



Route 12 Intersection (Proposed Conditions)



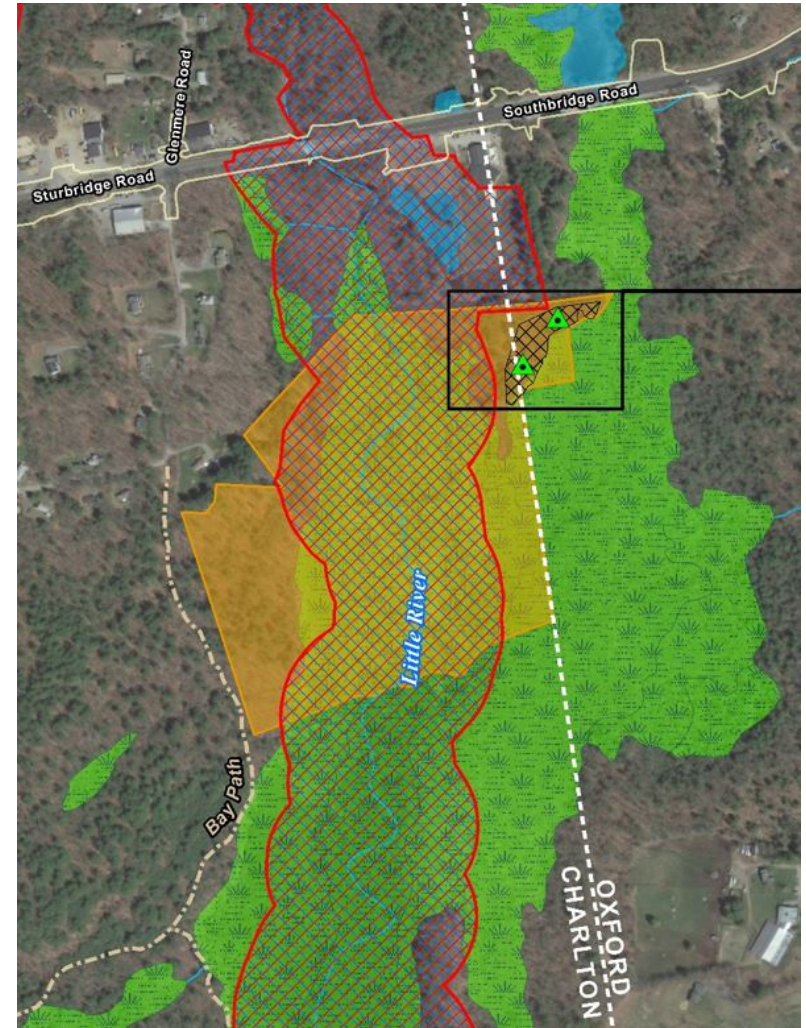
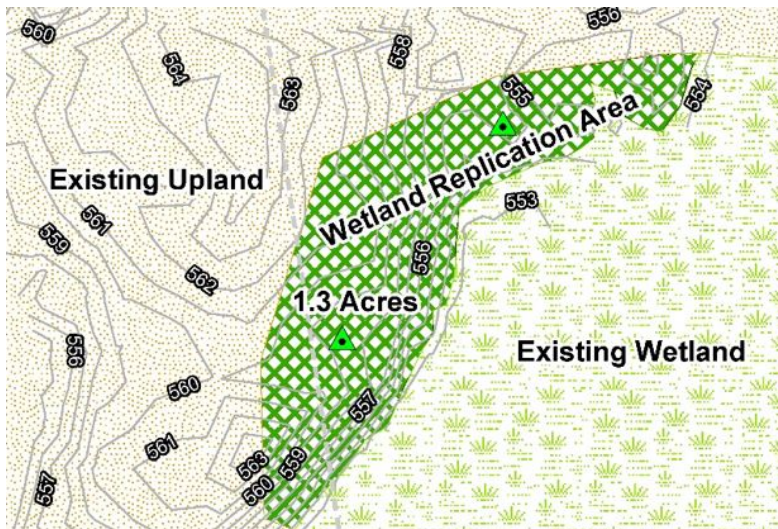
Regulatory Approvals/Permits

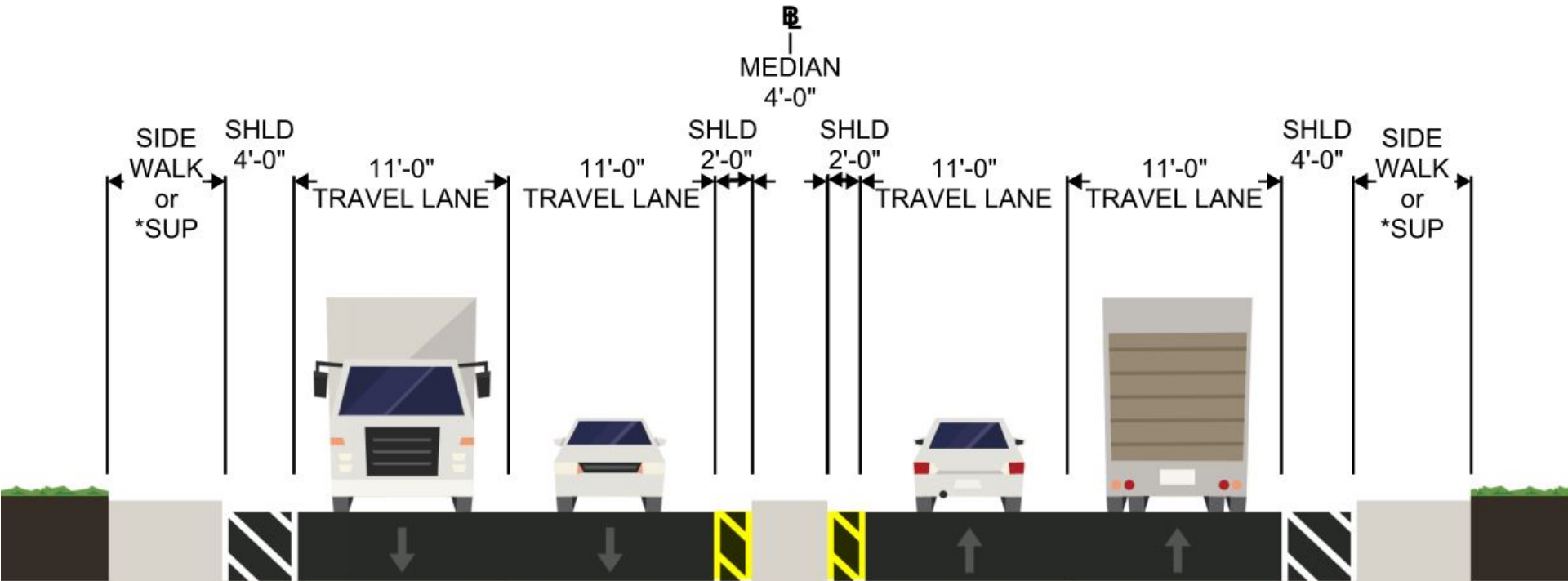
- Notice of Project Change
- Final Environmental Impact Report
- Individual Categorical Exclusion
- ACOE – Section 404 Individual
- MassDEP –Section 401 Water Quality Certificate
- NHESP – Conservation Management
- Conservation Commissions Permit –
Notice of Intent (NOI)



Regulatory Approvals/Mitigation

- 42 Acre Conservation Parcel
- 1.3 +/- Acre Wetland Replication Areas
- Stormwater Management – Best Practices





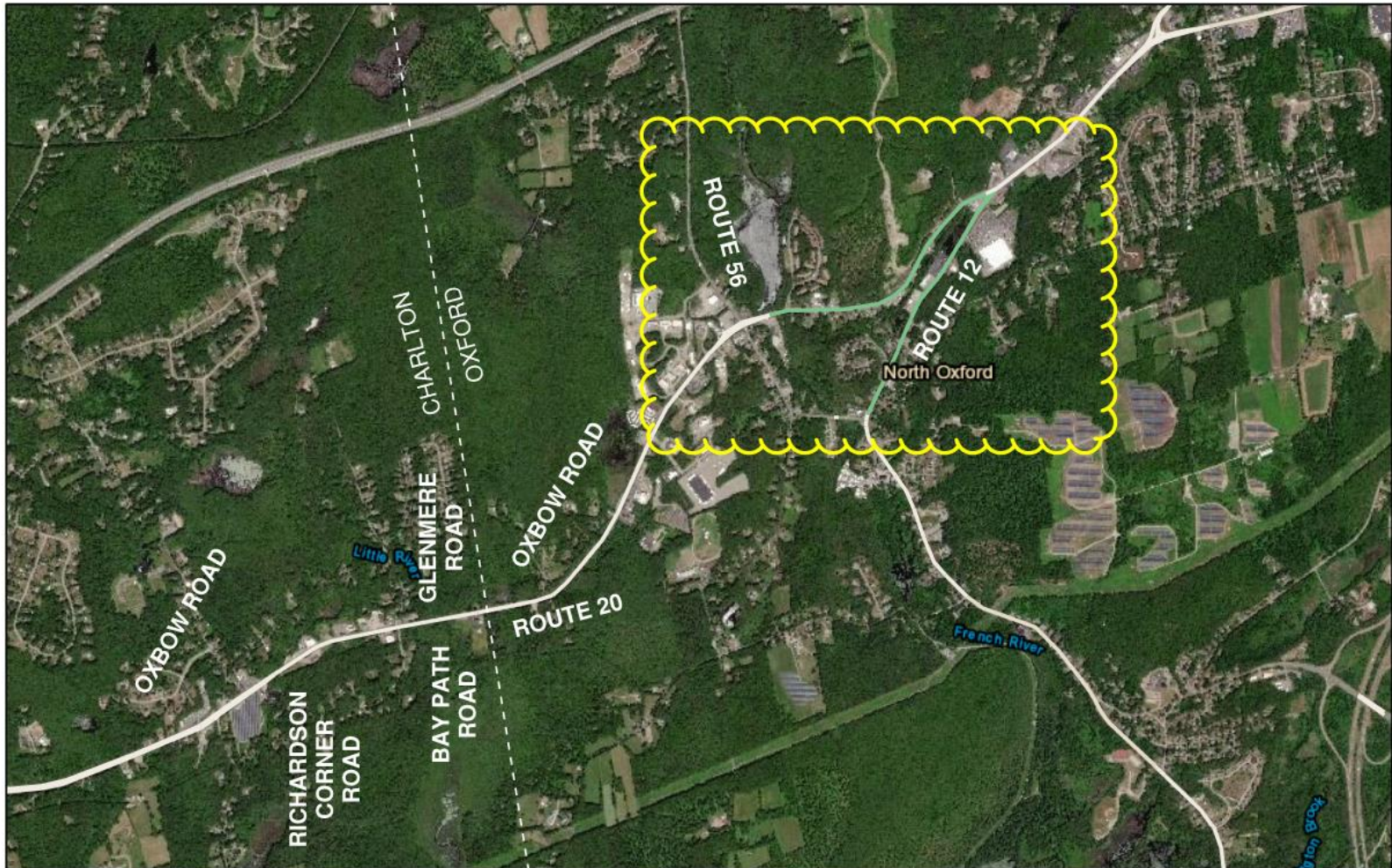
Proposed Pedestrian/Bicycle Accommodations

- No existing facilities for pedestrians and bicycles
- Based on Need

*Shared-Use Path (SUP)

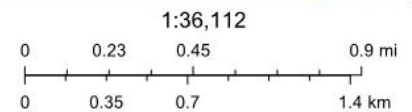
- Sidewalk/Shared-Use Path (SUP) at Rte. 56 intersection and along Rte. 20 from Rte. 56 to Rte.12
- We Are Seeking Your Input

Potential for Walkable Trips



Potential for Walkable Trips

—	8
—	7
—	9 (Lowest)



Esri, HERE, Garmin, (c) OpenStreetMap contributors, and the GIS user

Web AppBuilder for ArcGIS

Massachusetts Department of Transportation (MassDOT), MassGIS | USDA FSA, DigitalGlobe, GeoEye, CNES/Airbus DS | Esri, HERE, Garmin, IPC |

Percentile Bike Trips within RPA



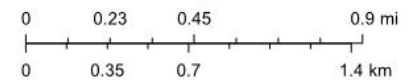
Potential for Everyday Biking Score by RPA

Score Percentile within RPA

- 100%
- 99.890625%
- 99.21875%
- 98.4375%

- 96.875%
- 93.75%
- 87.5%
- 75%
- 50%

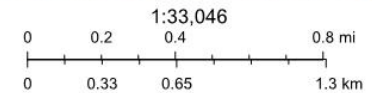
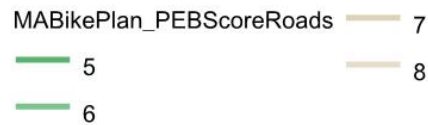
1:36,112



Esri, HERE, Garmin, (c) OpenStreetMap contributors, and the GIS user

Web AppBuilder for ArcGIS
USDA FSA, DigitalGlobe, GeoEye, CNES/Airbus DS | Esri, HERE, Garmin, iPC |

Potential for Everyday Biking



Esri, HERE, Garmin, (c) OpenStreetMap contributors, and the GIS user community. Source: Esri, DigitalGlobe, GeoEye, Earthstar Geographics, CNES/Airbus DS, USDA, USGS, AeroGRID, IGN, and the GIS User Community

Project Update

- Updates to the Design and Plans
- Utility Coordination
- Permitting*
- Design Public Hearing*
- Right of Way
- Prepare Procurement Documents

Project Schedule

- Anticipated Project Milestones
 - Permitting – Fall 2020
 - Design Public Hearing – Fall 2020
 - Advertisement Date – 2021
 - Award – Winter 2021/2022
 - Construction Begins – 2022

Public Comments, Q&A

Feedback

Route20CharltonOxford@state.ma.us
dot.feedback.highway@state.ma.us

Charlton-Oxford Route 20 Reconstruction
Project File Number 602659