

MBTA GLX Community Working Group

Tuesday, February 27, 2018

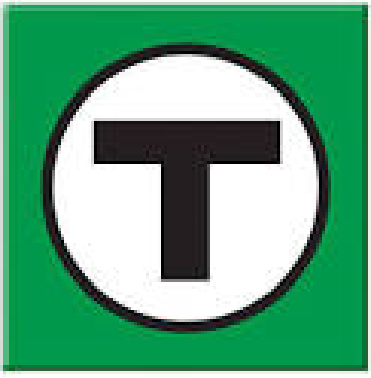
MBTA GLX Community Working Group - I

Welcome - Tour

Introduction:

John Dalton MBTA-GLX Program Manager

Clyde Joseph GLX - Constructors Program Manager



MBTA Operations - II

- Green Line Typical Daily Operations

Revenue Service

Non-Revenue Activities



MBTA Vehicle Maintenance Facilities - II

- Green Line - Riverside Car House Typical Daily Operation
- Overnight Vehicle Storage
- What is a truing machine?



GLX Constructors - III

- ▶ Current test pit and soil boring operations
- ▶ Upcoming construction outlook
- ▶ Tree removal
- ▶ Comprehensive pest control management plan
- ▶ Pre-construction surveys

Project Schedule Overview - III

- ▶ Design & Pre-Construction Work | Underway
- ▶ Alignment Clearing | Spring/Summer 2018
- ▶ Construction | Summer 2018 - Spring 2021
- ▶ Testing | Spring 2020 - Late 2021
- ▶ Opening | Late 2021



Potential Gilman Square Station Design

DRAFT- For Internal Discussion Only

Conceptual Draft –
For Discussion
Purposes Only



massDOT
Massachusetts Department of Transportation



February 5, 2018

Potential Gilman Square Station Design

DRAFT- For Internal Discussion Only



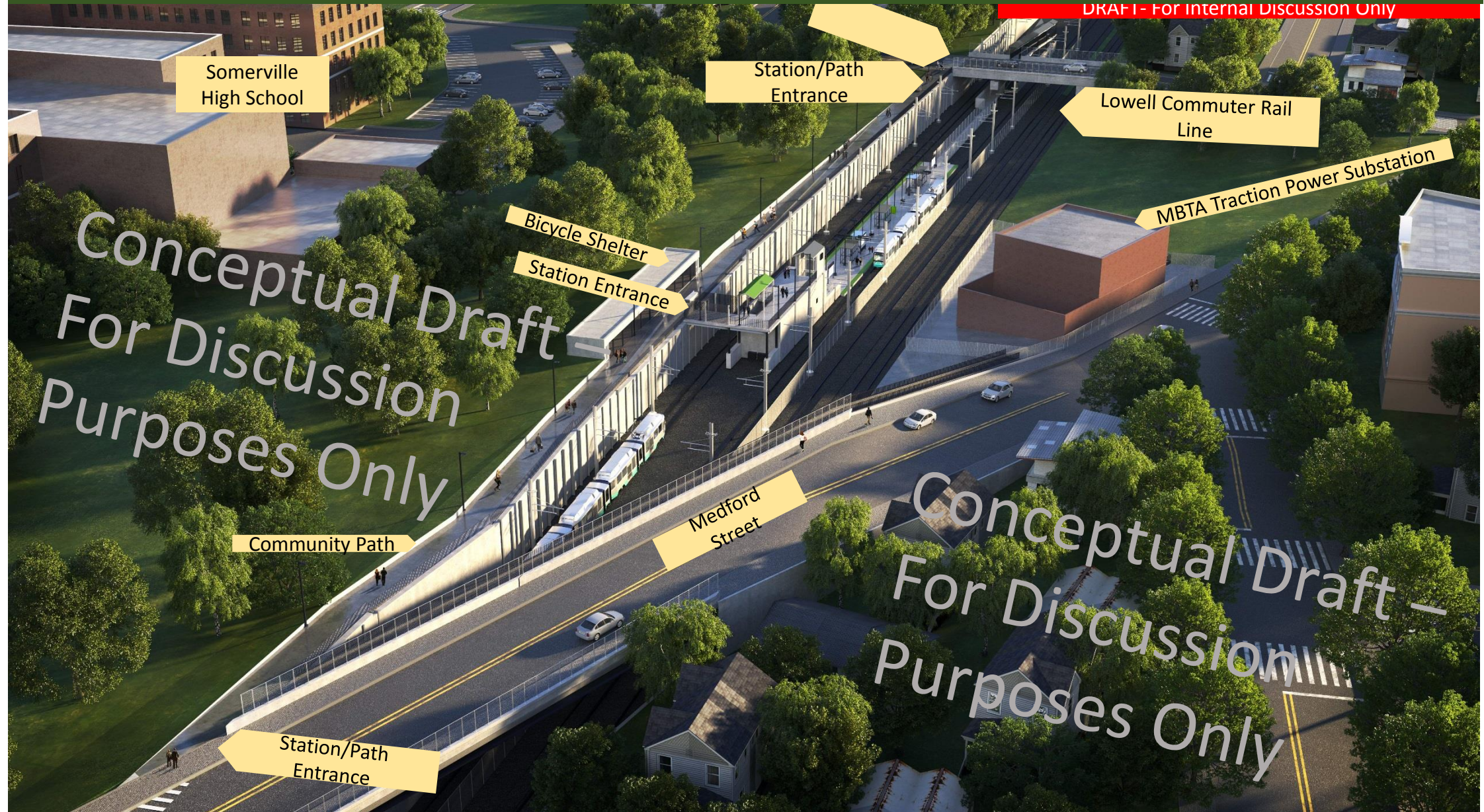
massDOT
Massachusetts Department of Transportation



February 5, 2018

Potential Gilman Square Station Design

DRAFT - For Internal Discussion Only



massDOT
Massachusetts Department of Transportation



February 5, 2018

Project Status - III

Q1 & Q2 2018

- ▶ Design Ongoing
- ▶ Survey Work Underway
- ▶ Soil Boring/Test Pit Exploration
- ▶ Site Clearing
- ▶ Pre-Construction Activities



What to Expect - III

Pre-Construction & Construction

- ▶ Ongoing Community Outreach
- ▶ Mobilization activities along entire corridor
- ▶ Clearing, survey work and relocation of existing utilities
- ▶ Heavy civil construction including night and weekend work
- ▶ Monitoring and mitigation planned for noise, vibration, and rodents



Next Steps - III

- ▶ Design continues
- ▶ Pre-construction work underway
- ▶ Ongoing outreach
- ▶ Questions: Please contact Terry McCarthy
- ▶ Supported by: GLX Constructors



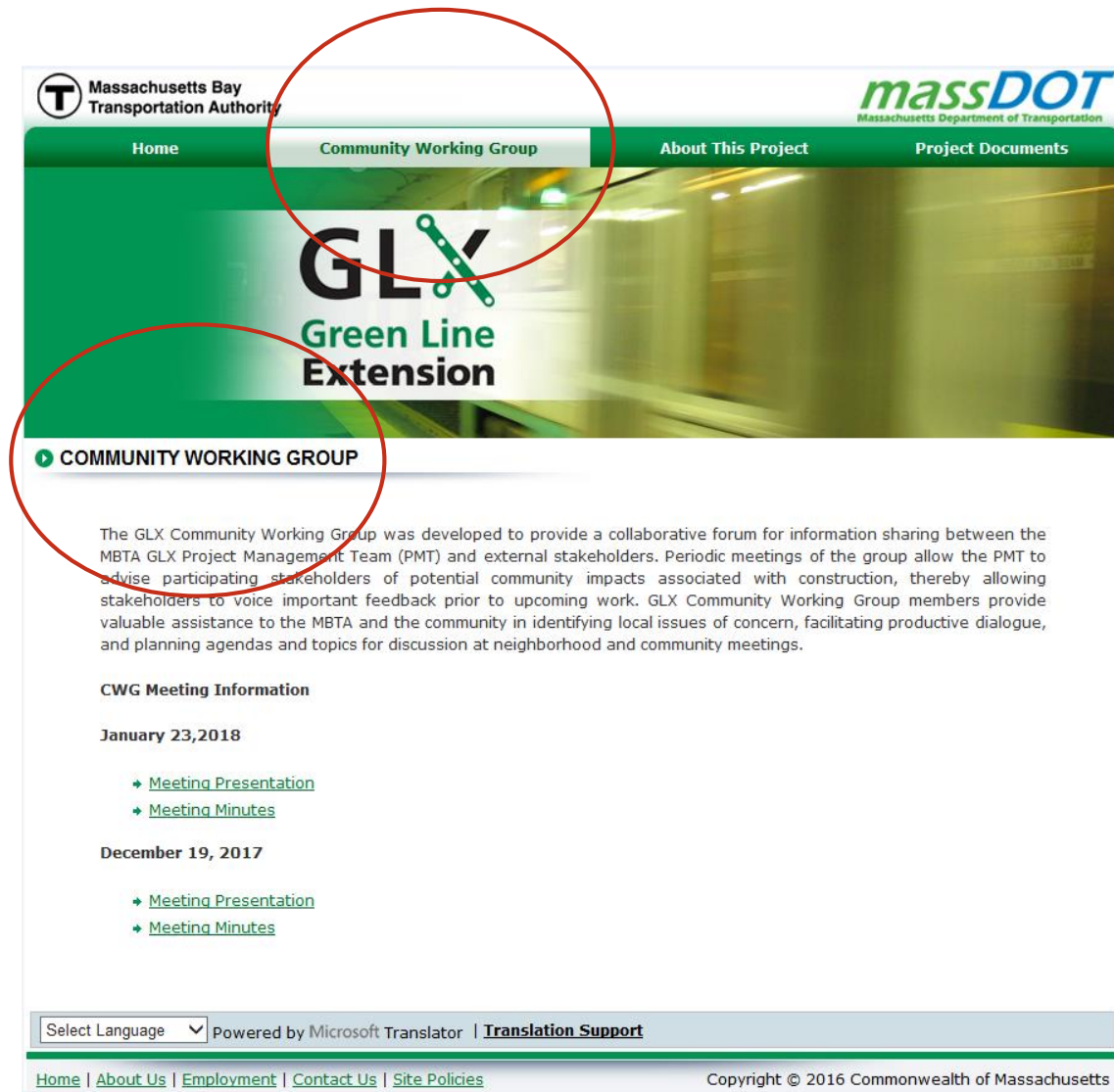
GLX Community Working Group - IV

CWG Planning and Administration

- ▶ GLX Website
- ▶ Social/Digital Media Plan
- ▶ FAQs
- ▶ Station Neighborhood Meetings
- ▶ Introduction of CWG Members on March 7th

MBTA GLX Community Working Group IV

GLX Website



MBTA GLX Community Working Group - IV

Social/Digital Media



MBTA GLX Community Working Group - IV



DRAFT

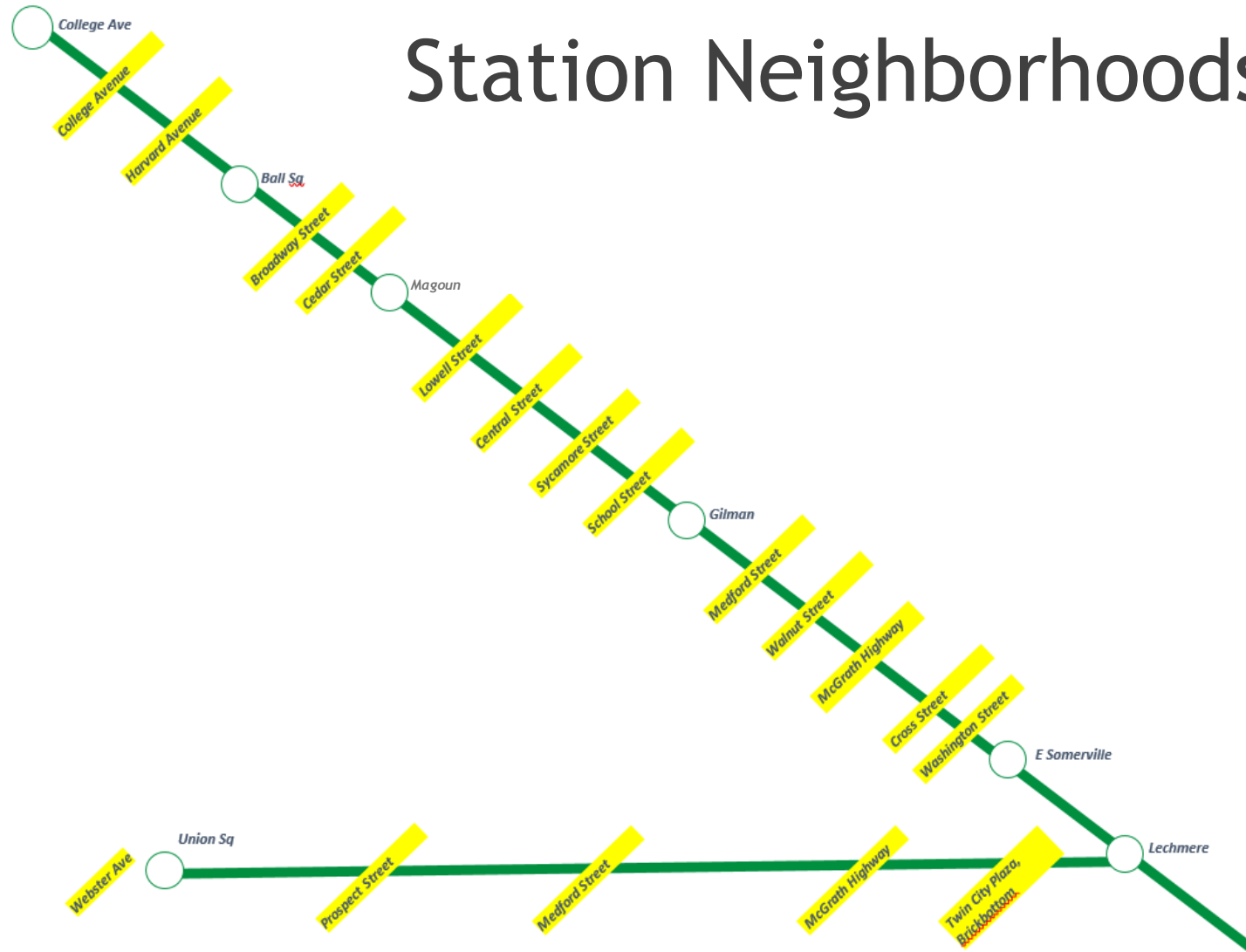
Green Line Extension (GLX) Project Frequently Asked Questions

1. **Q: Will there be nighttime work? If so, what noise mitigation measures will be implemented?**

A: Yes. Nighttime work is a critical element of GLX construction. Since the majority of the project is located inside of an active railroad right-of-way, the optimal work periods occur when the commuter and freight rails are out of service. Therefore, performing work at night and on weekends—when rail traffic is light or has been suspended—is vital to the completion of the project in a safe, timely, and cost-effective manner.

MBTA GLX Community Working Group - IV

Station Neighborhoods



MBTA GLX Community Working Group - IV

GLX Public Meeting

Wednesday, March 7, 2018

Somerville High School Auditorium

81 Highland Street

Somerville, MA 02143

MBTA GLX Community Working Group - V, VI

- ▶ Review
- ▶ Discussion
- ▶ Questions & Answers

Thank You