



GREEN LINE EXTENSION PROJECT



massDOT
Massachusetts Department of Transportation



1



GLX Community Working Group
Monthly Meeting
June 5, 2018

I. Update/Review

- Terry McCarthy, MBTA

II. Construction Update

- John West, GLXC Project Manager
- Jamie Doyle, GLXC Construction Manager

III. MBTA Bus Operations

- Melissa Dullea & Karen Burns

IV. Discussion

Updates from last meeting:

➤ **Pre-Construction Surveys**

- Phase I & II

➤ **Traffic Detour Management**

- Public Outreach, First Responders, MBTA Bus Operations

➤ **School Street Pedestrian Bridge**

- City of Somerville Electric and GLX Coordinating

➤ **GLX Community Tabling Events**

- DBE Outreach Event, June 21st
- City of Somerville Info Session, June 23rd

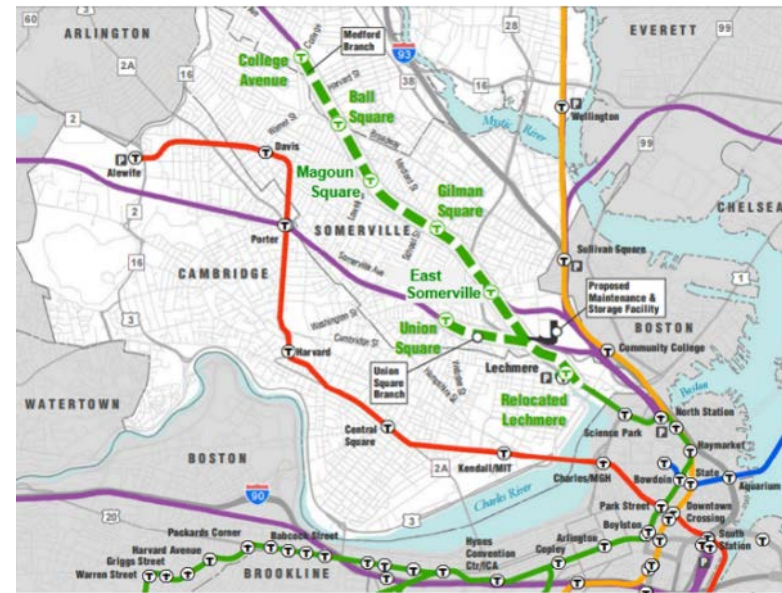
➤ **CWG July 3rd Meeting Moved to July 10th**

Construction Update

John West, GLXC Project Manager

Jamie Doyle, GLXC Construction Manager

- Design & Pre-Construction Work | Underway
- Alignment Tree Clearing | Spring- Summer 2018
- Construction | Summer 2018 - Spring 2021
- Testing | Spring 2020 - Late 2021
- Opening | Late 2021



- **Safety Week (May 7 – 11):** *The Power of Safe Choices*



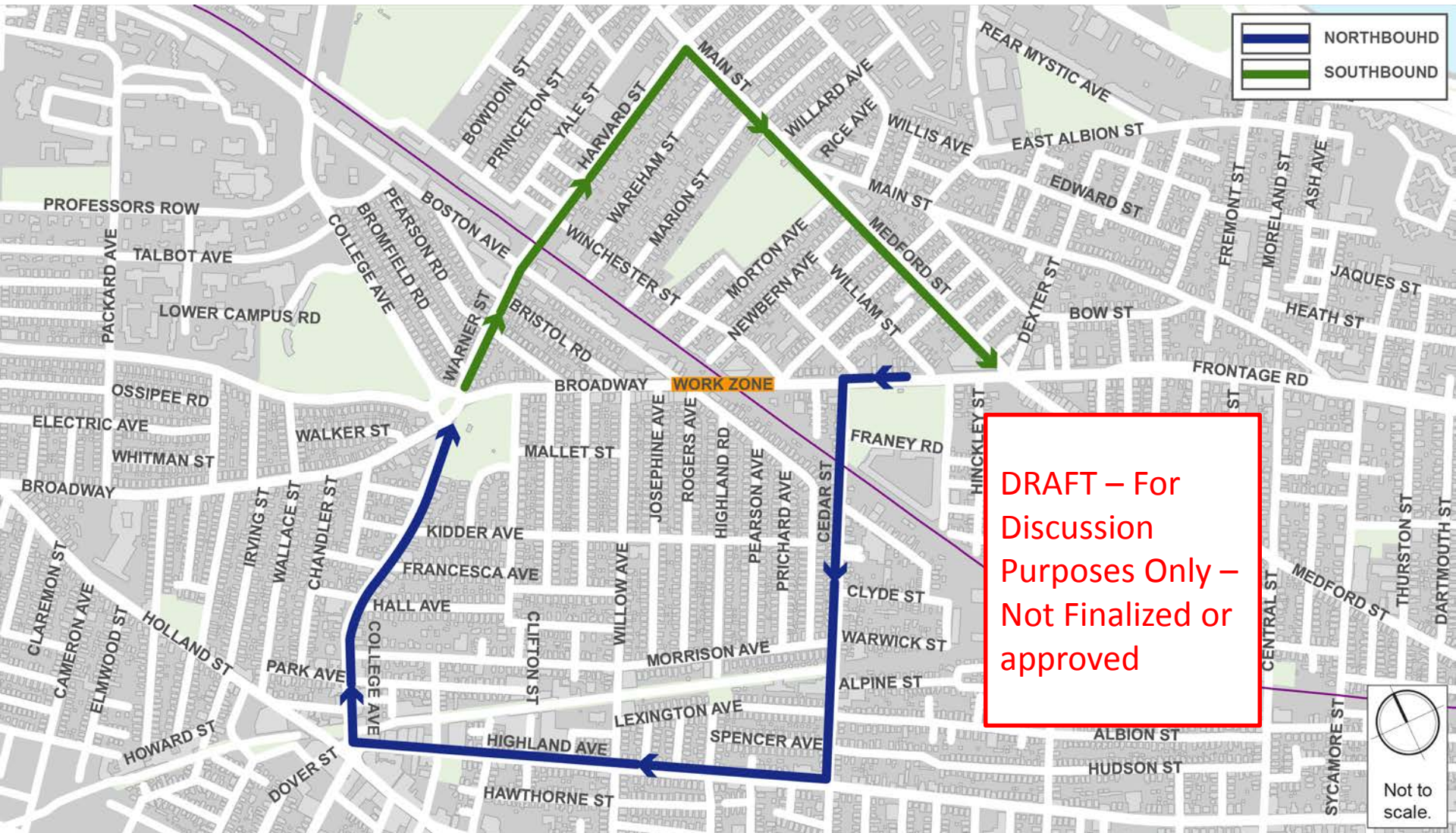
GLX-Bridge Closure Schedule

- Broadway Bridge – November 2018 – Late 2019
- Washington St – *Phase 1* April 2019 to November 2019
- Washington St *Phase 2* April 2020 to August 2020
- Medford Street - May 2019 to December 2019
- School Street December 2019 to September 2020
- College Ave December 2019 to April 2020
- (Traffic through College Ave. will remain open throughout construction)
- Cedar Street – February 2020 to March 2020 (No closure planned)
- Lowell Street – June 2020 to August 2020 (No closure planned)

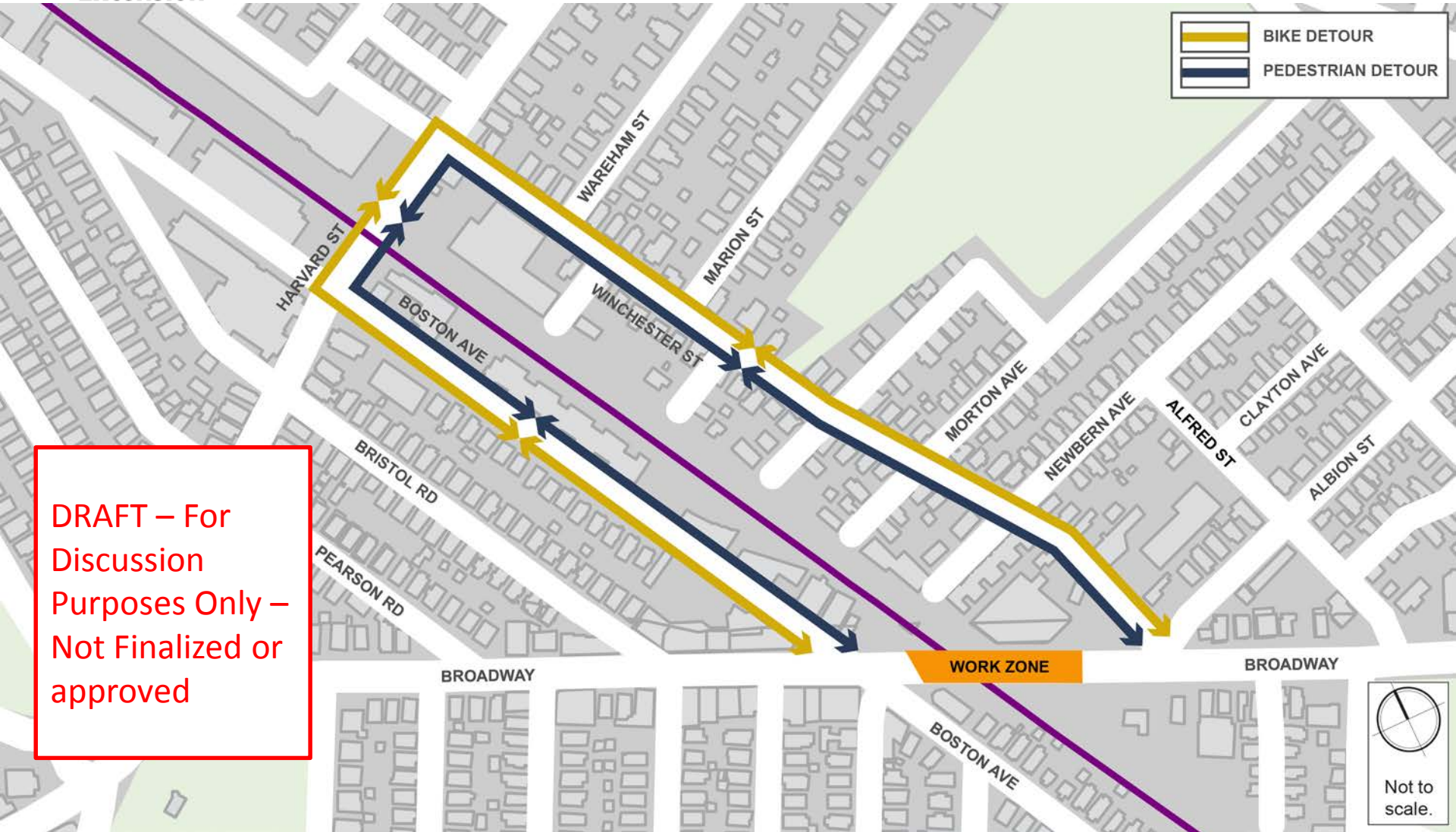
Broadway Bridge (Targeting Fall 2018 to Fall 2019)



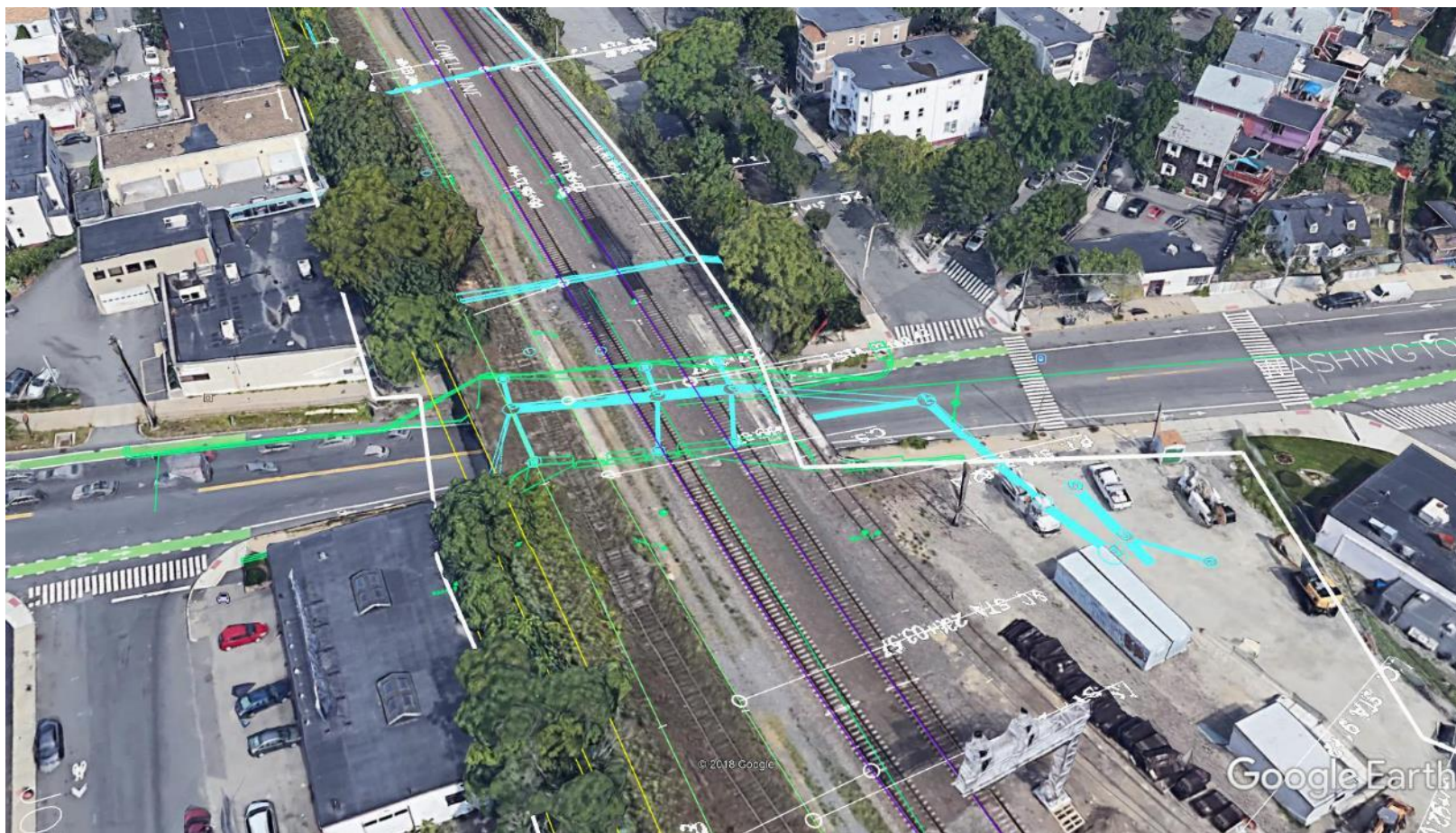
Broadway Bridge Detours Traffic



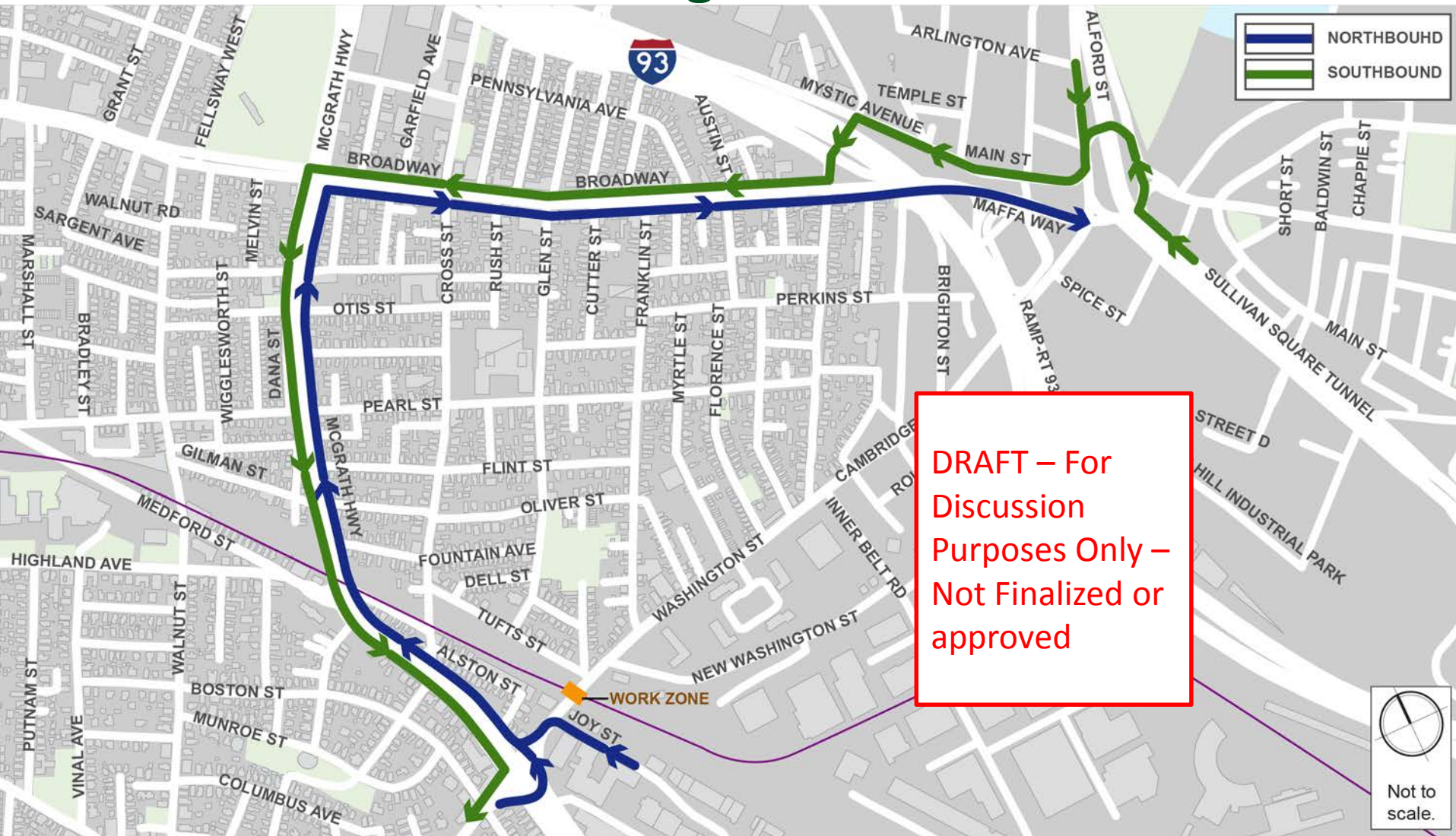
Broadway Bridge Detours Pedestrians and Bikers



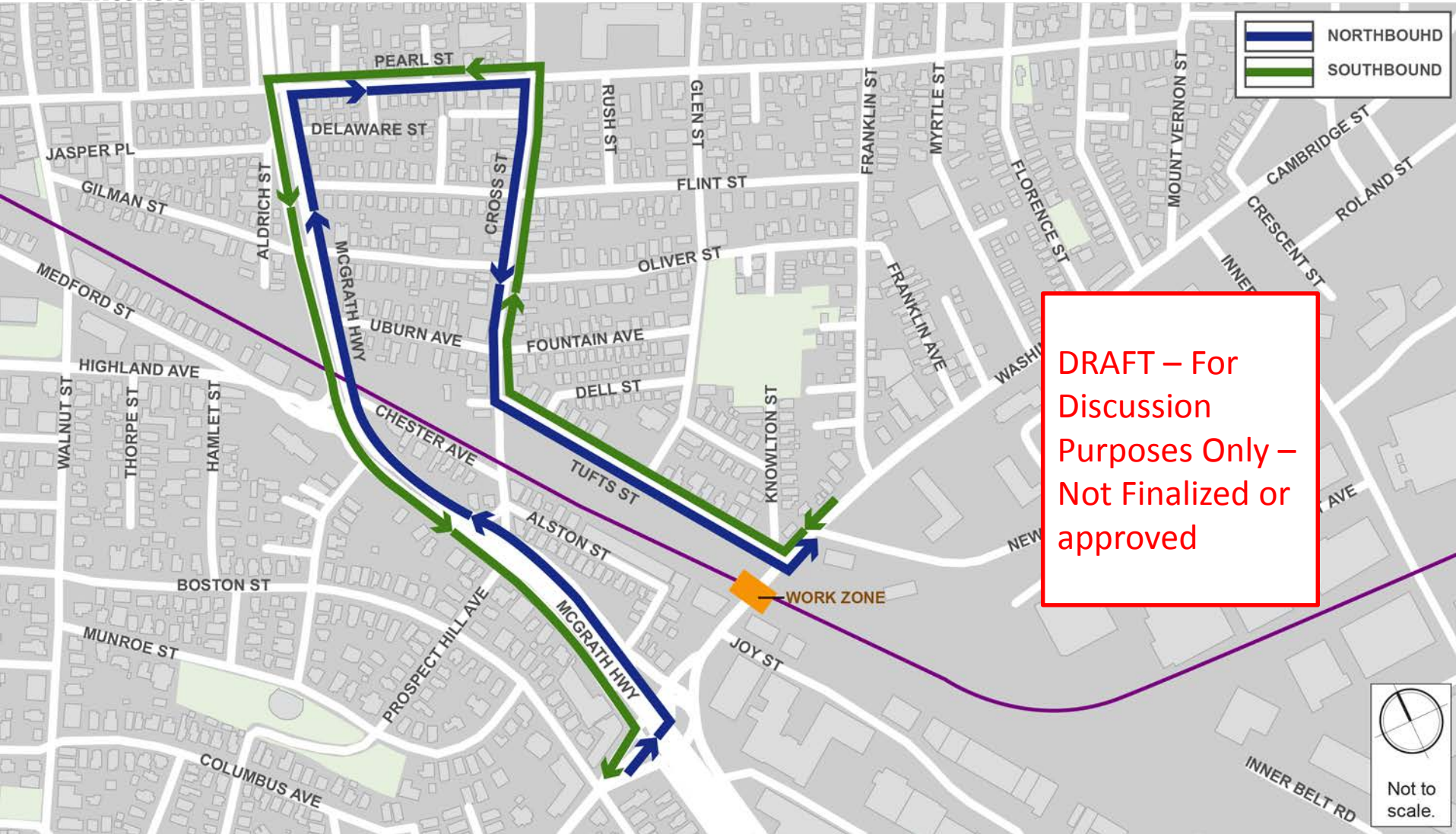
Washington Street Bridge – (Targeting Phase I – Early to Late 2019, Phase II – Spring to Fall 2020)



Washington St. Bridge Detours Regional

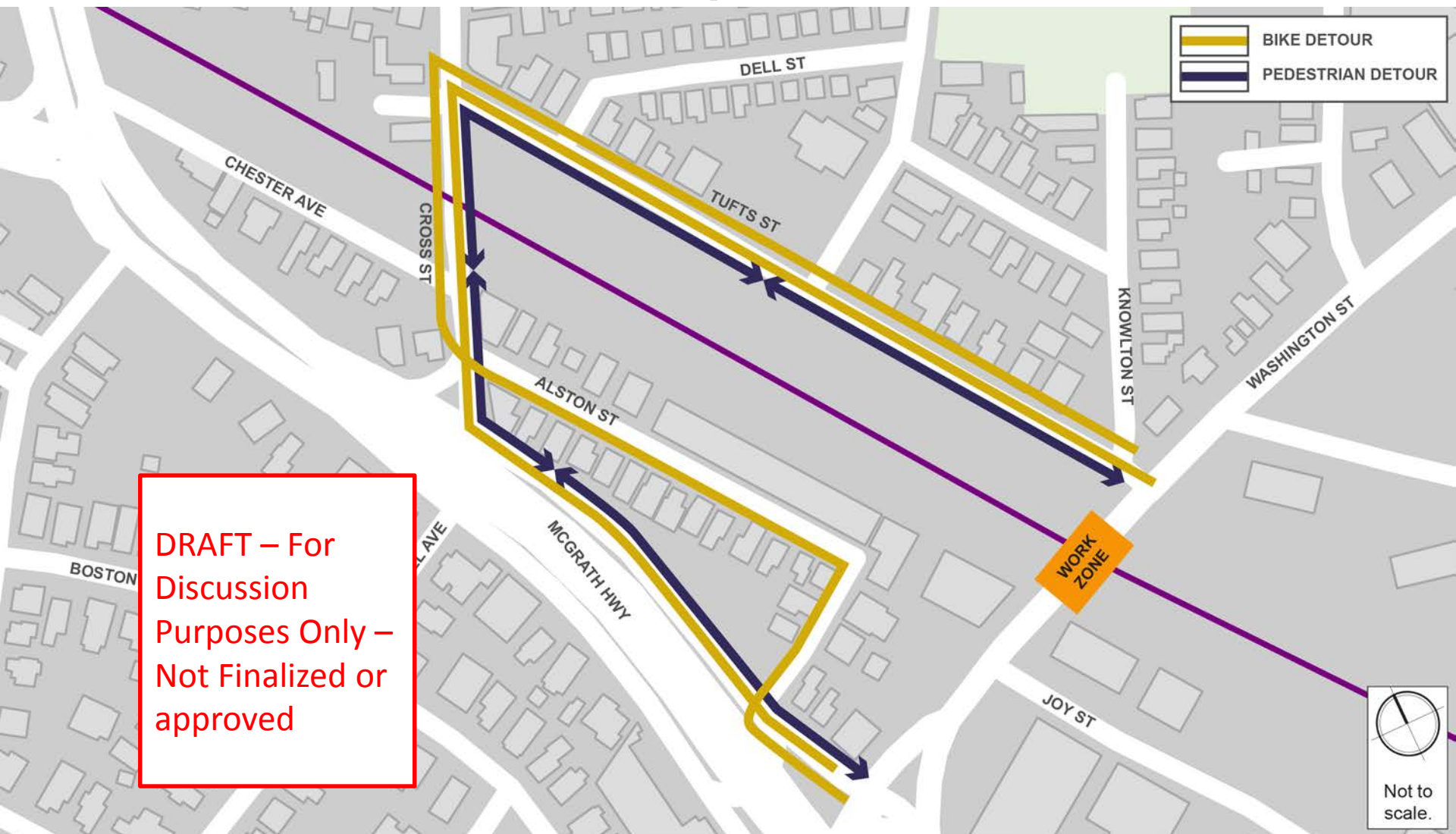


Washington St. Bridge Detours Local

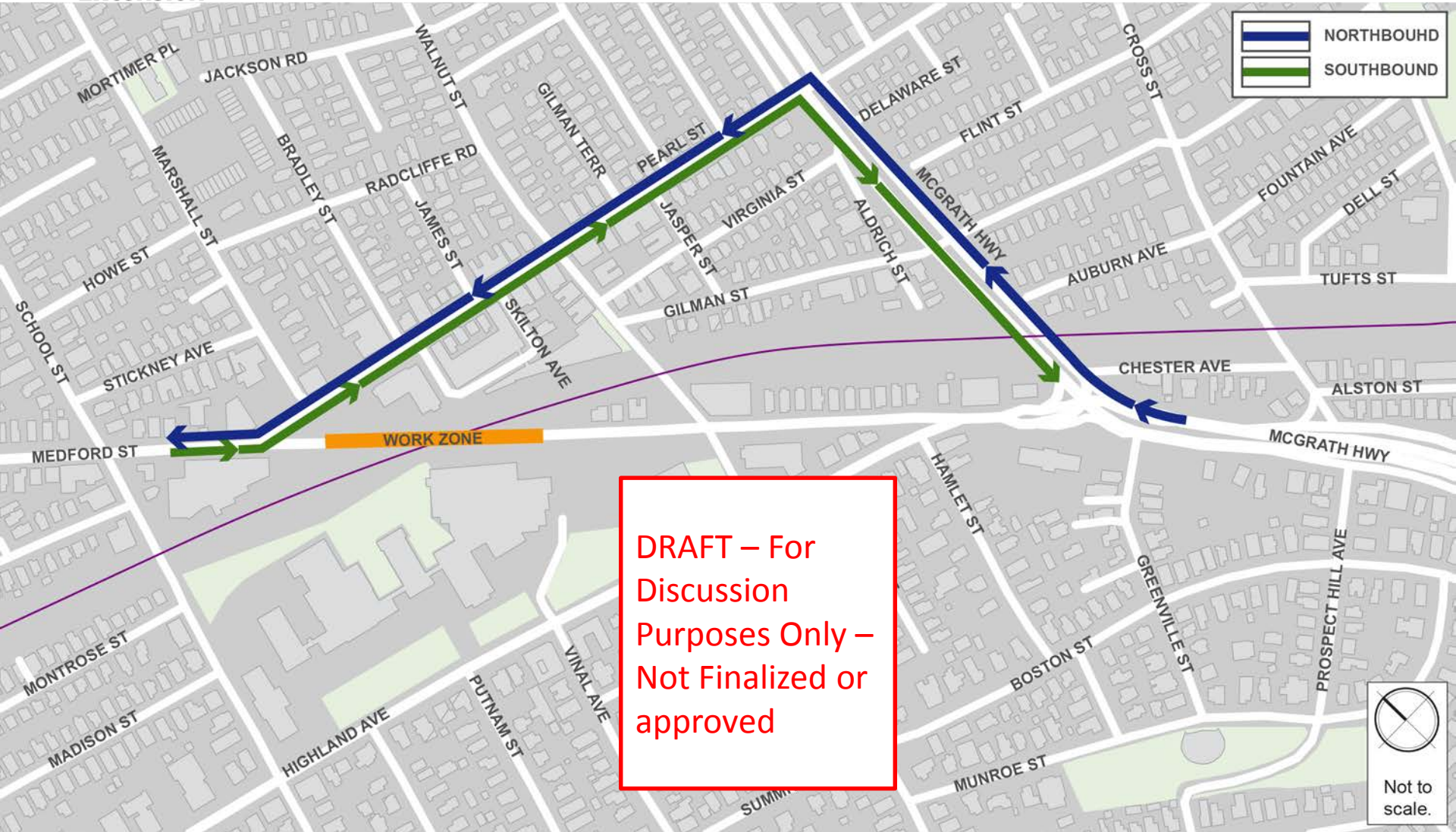


**DRAFT – For
Discussion
Purposes Only –
Not Finalized or
approved**

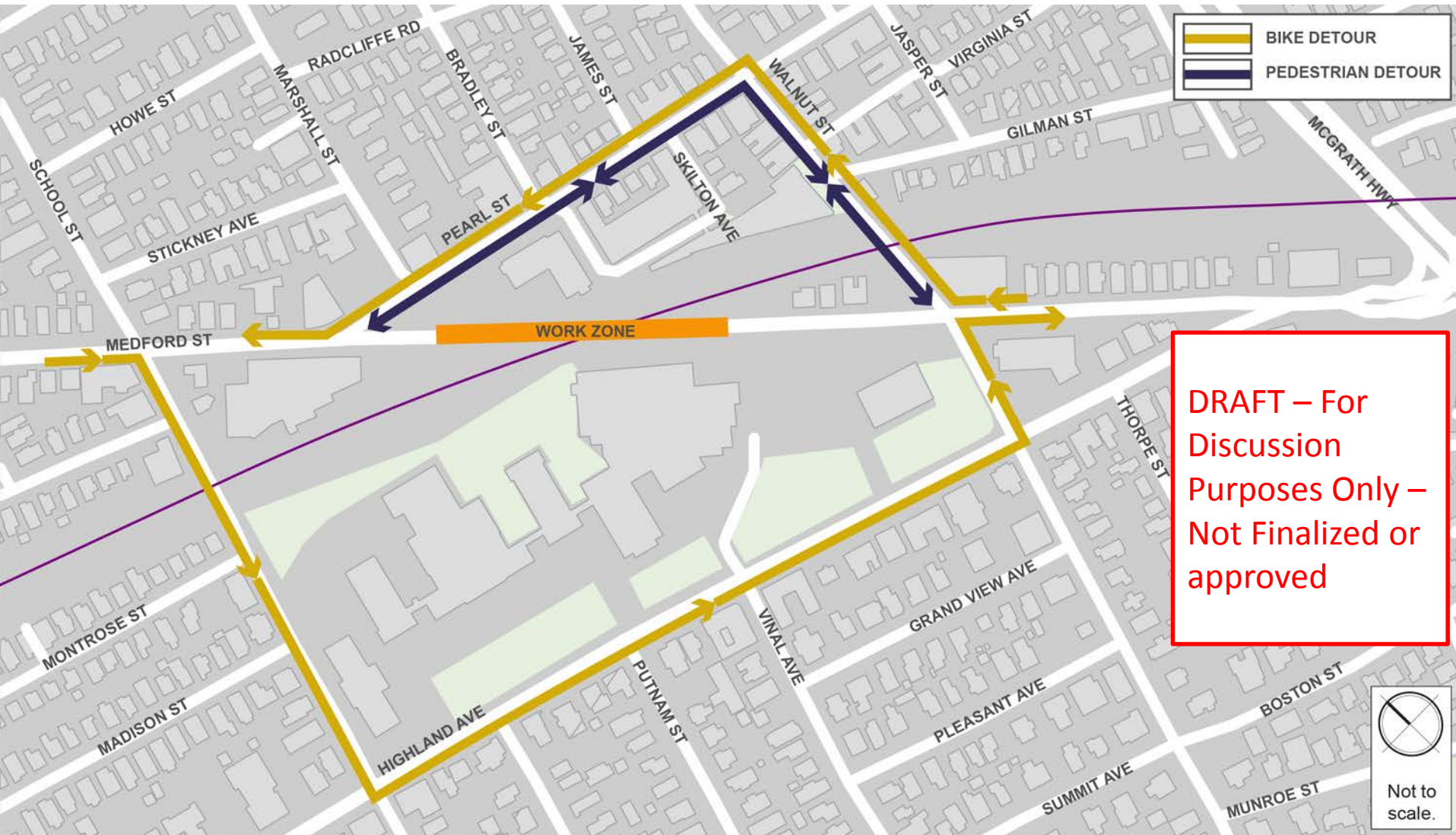
Washington St. Bridge Detours Peds/Bikes



Medford Street Bridge Detour Traffic



Medford Street Bridge Detour Peds/Bikes



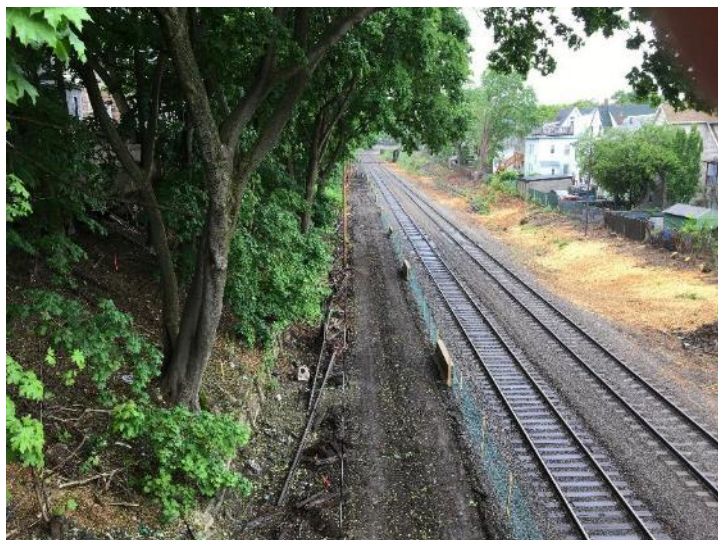
- Tree Clearing & Grubbing**

Phase I – clearing on east side of alignment complete



- **Old Track Removal**

- 8,000 feet of old rail to be removed
- Rail to be recycled
- Footprint will be future home of light rail for Green Line Extension



- **Right of Way Trash Cleanup**

- Focus on west side of alignment where we have access with heavy equipment
- 6 – 8 roll off containers filled per shift
- Approx. 600 tons of trash removed to date



- **Pre-Construction Survey**



- **Homan Building Demolition**



- **Disadvantaged Business Enterprise (DBE) Networking Event**
(Thursday, June 21)



**GREEN LINE EXTENSION
DBE OUTREACH FORUM**

Refreshments will be served

Let's Do Business Together - The GLX Constructors team believes in providing subcontracting and employment opportunities to the community. We are looking for DBE's and qualified participants to join us in building a successful project for the MBTA.

Skills and services needed include:

- Asphalt and concrete paving
- Cleanup and waste removal
- Construction and land surveying
- Curb and gutter
- Demolition and removal
- Electrical
- Fencing
- Flatwork/sidewalks
- Landscaping/irrigation
- Masonry
- Minor earthwork and support
- Painting
- Rebar replacement
- Roofing
- Signing and striping
- Station finishes and fixtures
- Traffic control
- Utilities and drainage
- Trucking
- Design Services

WHO:

- Certified Disadvantaged Business Enterprises
- Qualified Candidates for employment opportunities

WHEN:

Thursday, June 21, 2018
3:30 - 6:30 PM

WHERE

GLX Constructors
200 Inner Belt Rd.
(Suite 225)
Somerville, MA 02143

**For employment opportunities with our partners
visit: www.glxconstructors.com
Click Careers**

To RSVP:
opportunities@GLXConstruct.com
or
(617) 684-3277

FLUOR **MIDDLESEX CORPORATION** **HERZOG** **Balfour Beatty** **STANTEC**

GLXC is an Equal Opportunity Employer: Minority/Female/Disability/Veterans

Discussion