



# GREEN LINE EXTENSION PROJECT



**massDOT**  
Massachusetts Department of Transportation



- I. Safety & Introduction**
- II. GLX-MBTA Update**
- III. MBTA Bus Operations and Service Plan**
- IV. GLX-C – Design & Construction Update**
- V. Discussion**

# Safety & Introduction

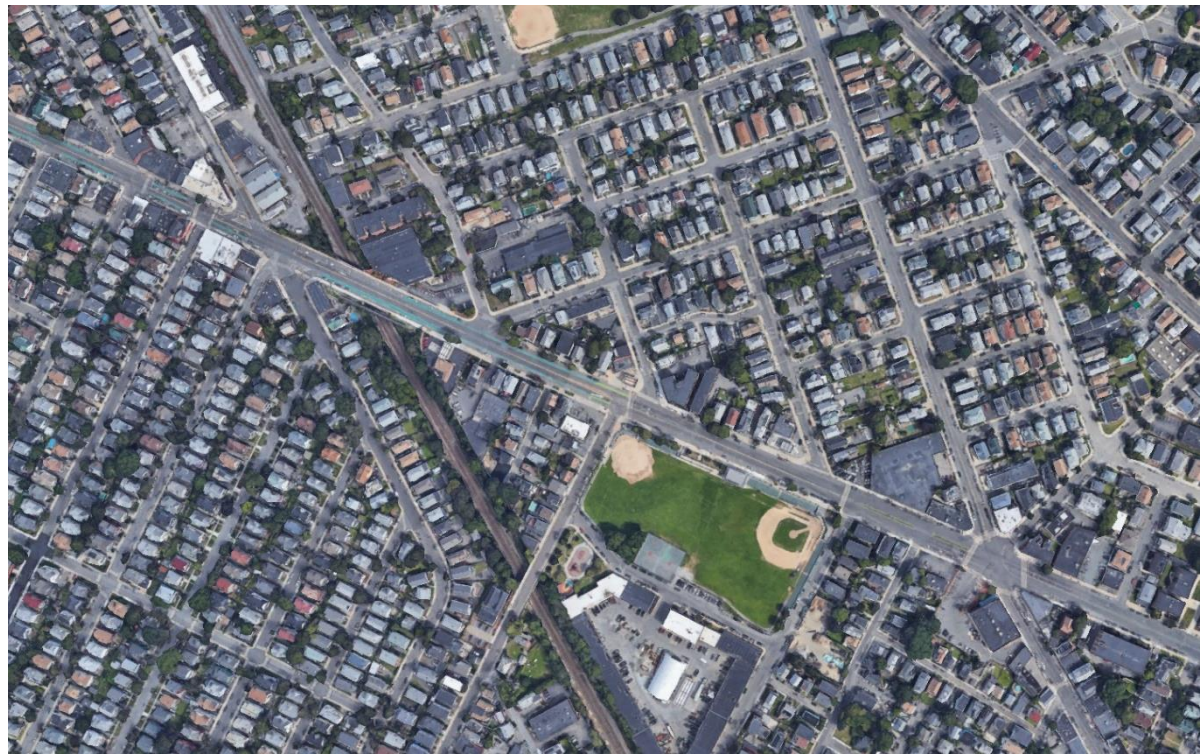
## GLX-MBTA Update

Terry McCarthy, MBTA

- **Nighttime Work Schedule**
- **Broadway Bridge Schedule**
- **Chamber of Commerce Outreach**
- **Freight Service Changes**
- **Ongoing Outreach Highlights/Summary**



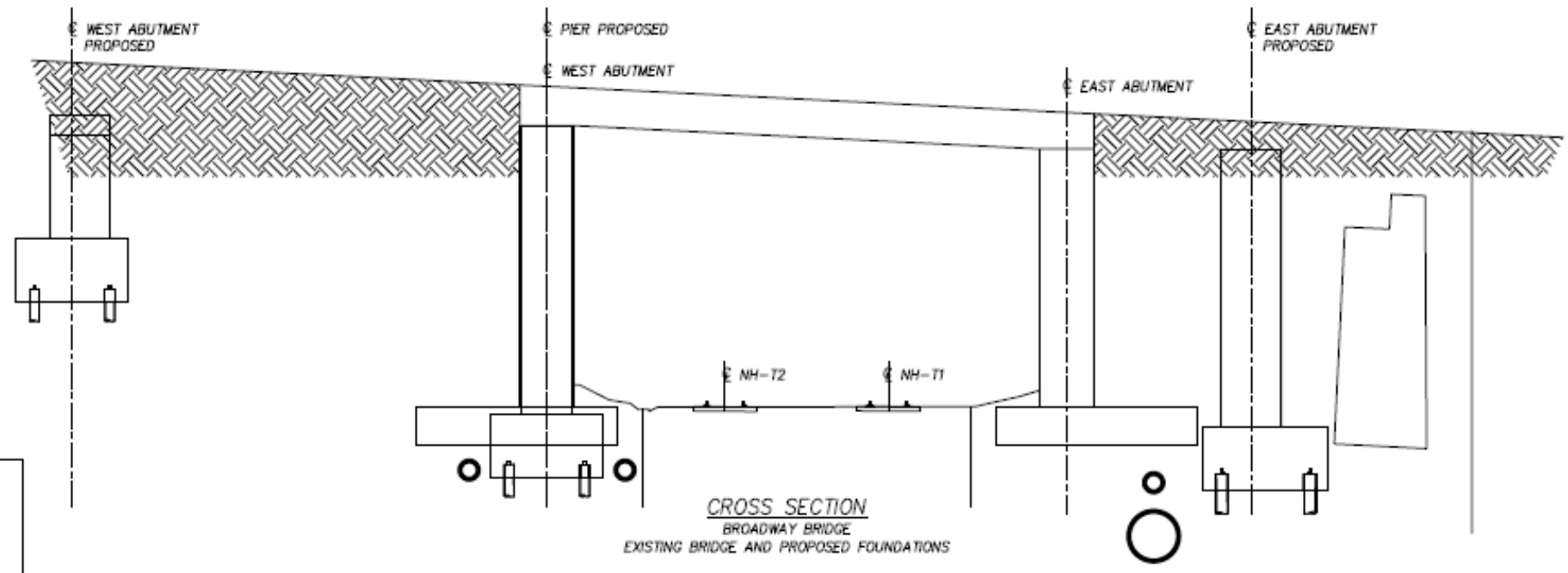
- Chamber/Business Outreach Plan



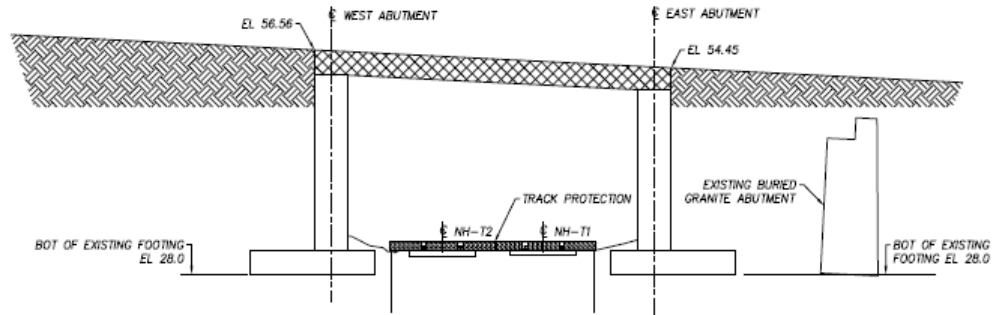
# Broadway Bridge

DRAFT

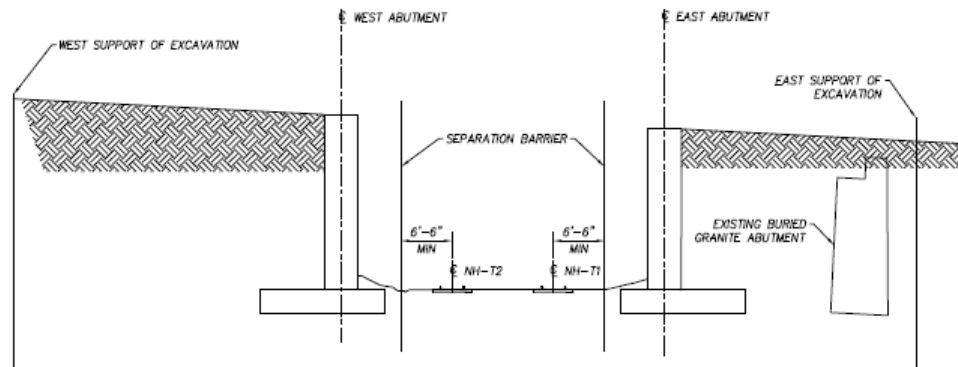
PLAN  
BROADWAY BRIDGE  
EXISTING BRIDGE AND PROPOSED FOUNDATIONS



# Broadway Bridge



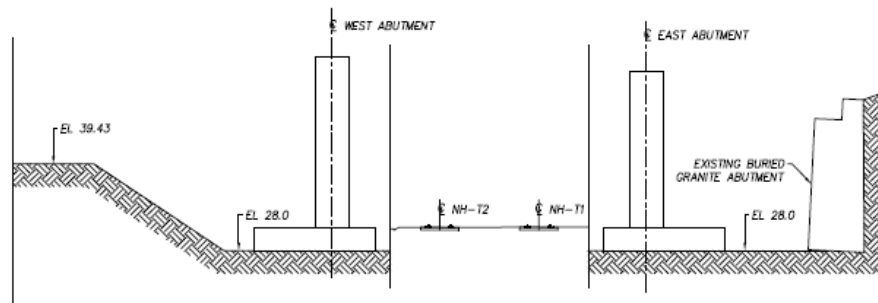
STEP 1: STAGE 1 DEMOLITION: SUPERSTRUCTURE  
(REQUIRE WEEKEND CLOSURE)



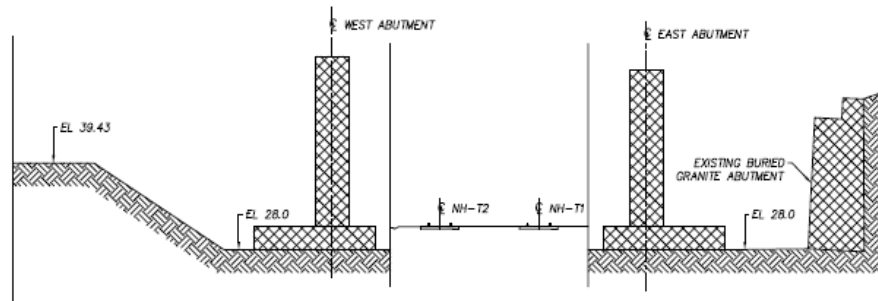
STEP 2: INSTALL SEPARATION BARRIER AND SUPPORT OF EXCAVATION

# Broadway Bridge

NOTES:  
1. SEE SHEET GLXC-CWP-1002-01 FOR GENERAL NOTES.



STEP 3: EXCAVATION STAGE 1

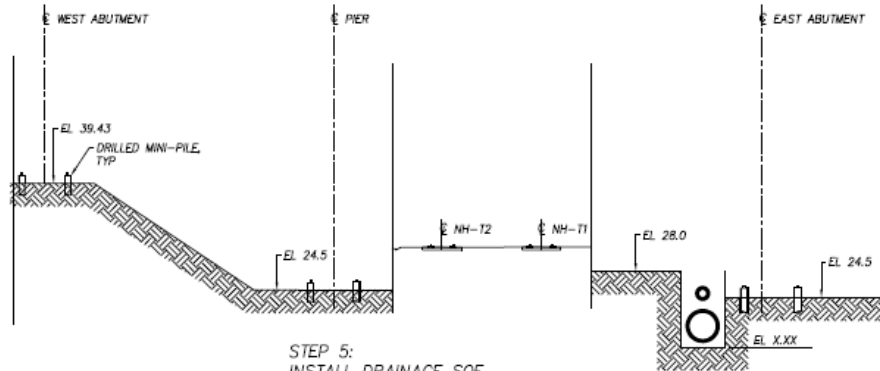


STEP 4: DEMOLISH STAGE 2: SUBSTRUCTURE

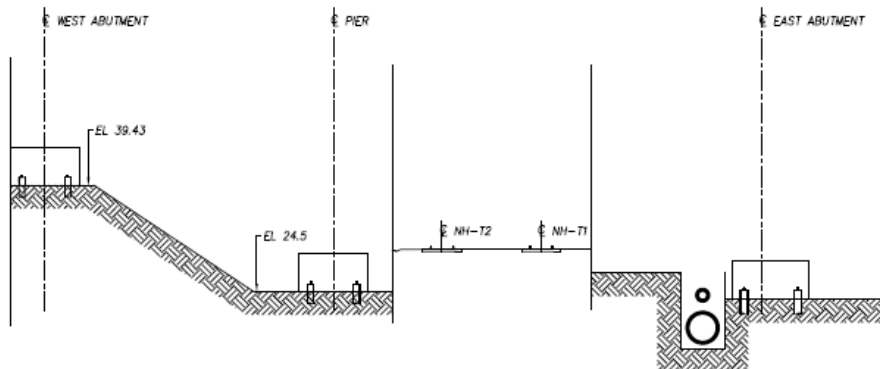
DRAFT



# Broadway Bridge



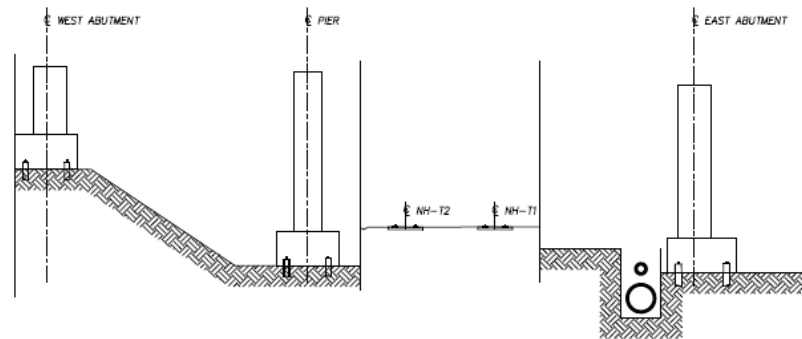
STEP 5:  
INSTALL DRAINAGE SOE  
INSTALL DRAINAGE  
EXCAVATION STAGE 2  
START OF MINI-DRILLED PILES



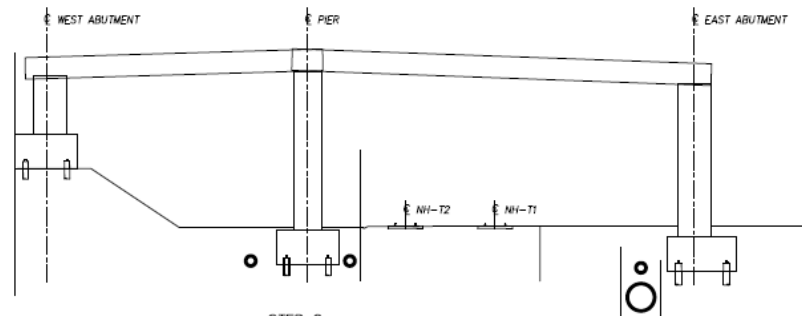
STEP 6:  
PRELIMINARY FORM / REINFORCE / POUR AND STRIP PILE CAPS  
ISSUED FOR INFORMATION ONLY  
NOT FOR CONSTRUCTION

# Broadway Bridge

NOTES:  
1. SEE SHEET GLXC-CWP-1002-01 FOR GENERAL NOTES.



STEP 7:  
FORM / REINFORCE / POUR AND STRIP SUB-STRUCTURE



STEP 8:  
FORM / REINFORCE / POUR AND STRIP SUB-STRUCTURE

DRAFT

- **Issue: Complaints about odor from rail road from Joy St. neighbors**
  - GLX Project Safety and Outreach teams responded
  - Smell was significant especially with right heat & wind combination
  - Covered material with tarps but this didn't eliminate problem
  - In process of moving rail to a more remote yard
  - This month ties will be placed along alignment as part of track shift



# Design & Construction Update

John West, GLXC



## Track Shift Overview

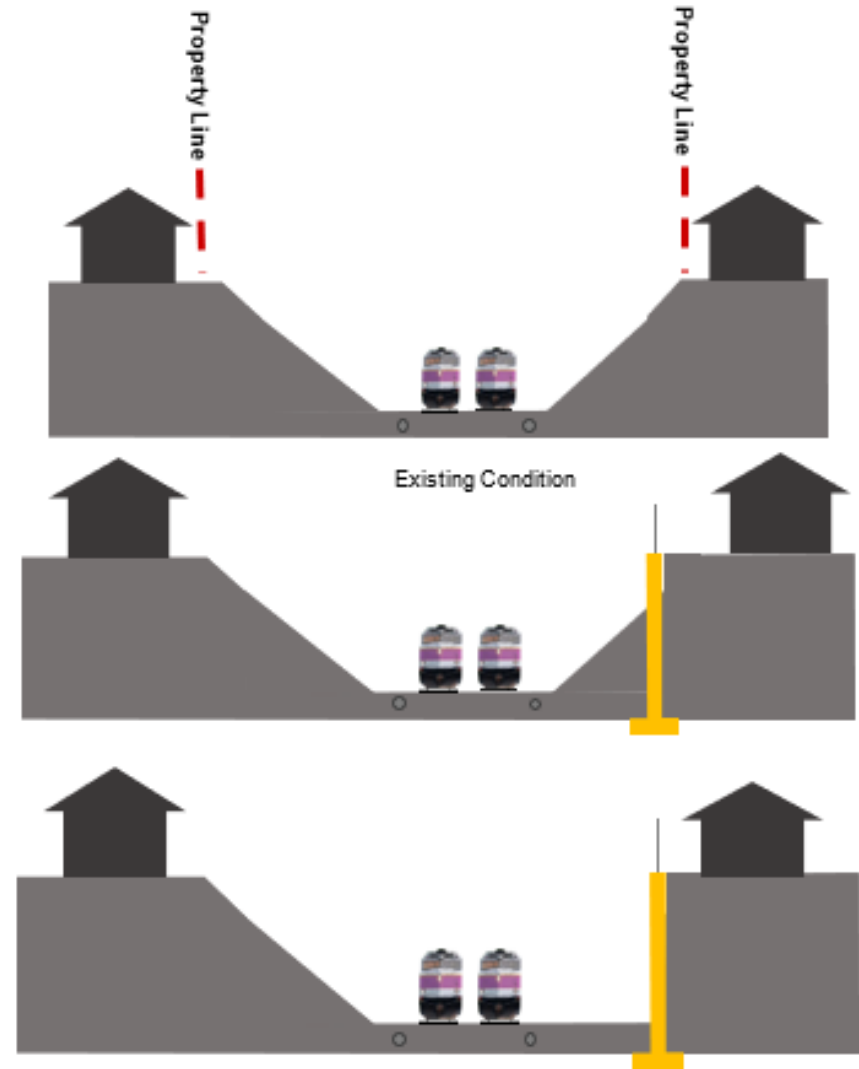
- Installation of Separation Barrier





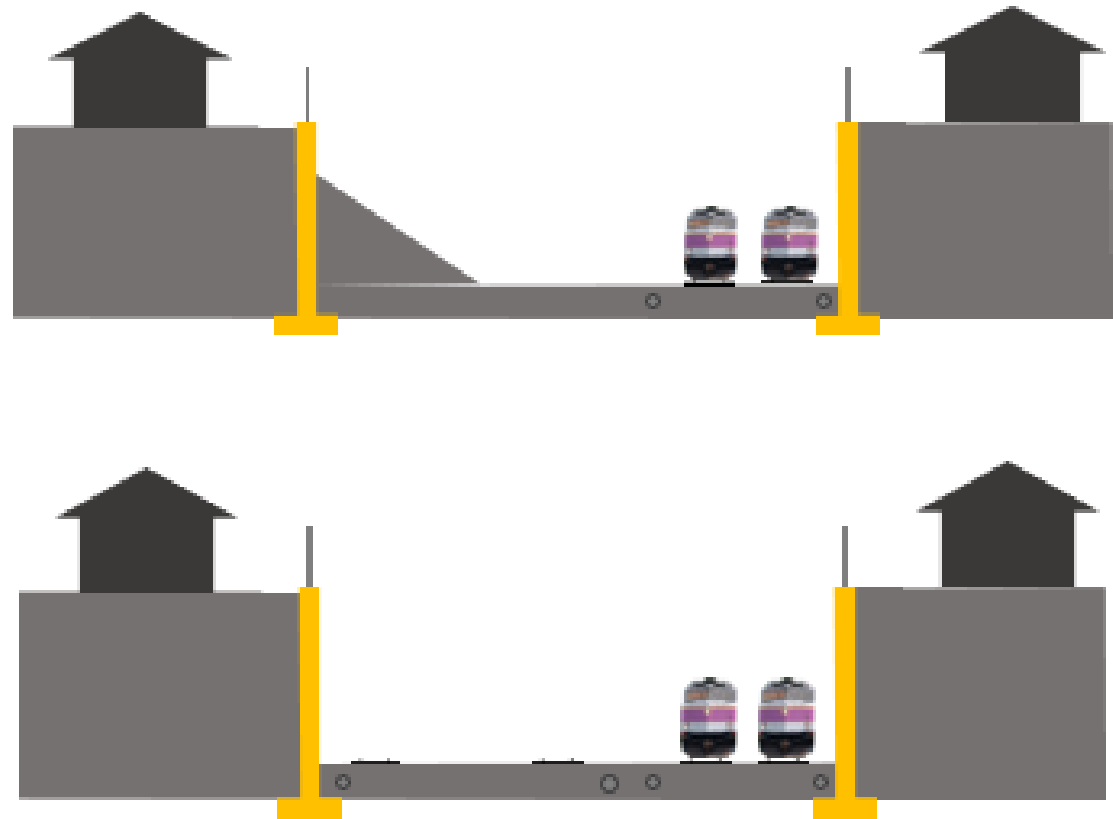
## Track Shift Overview

- Conceptual Project Sequencing



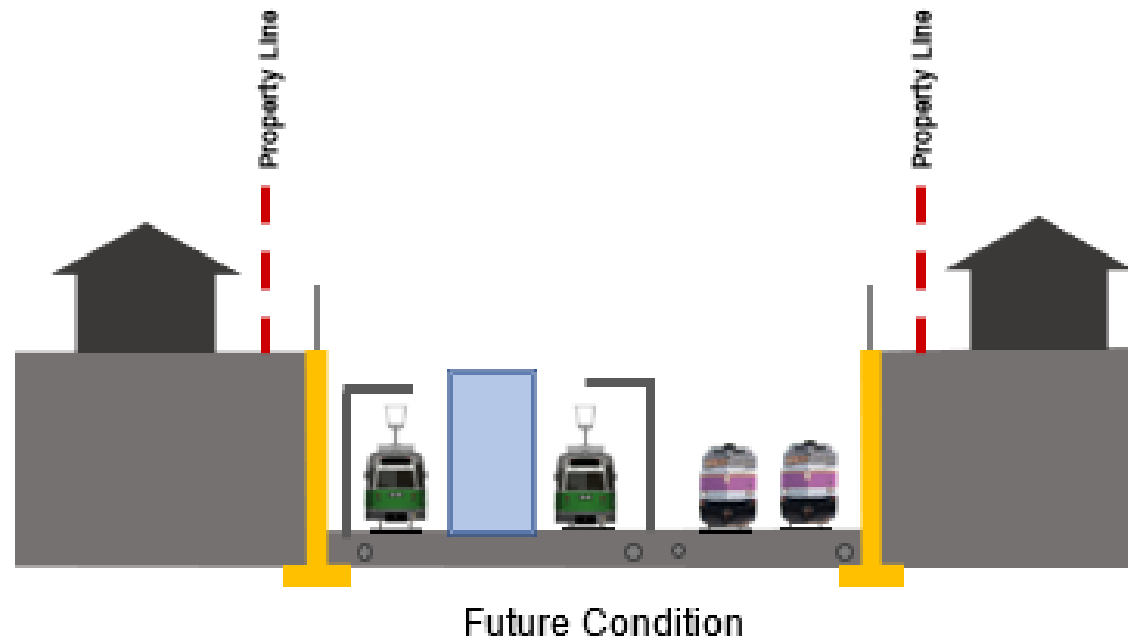
## Track Shift Overview

- Conceptual Project Sequencing

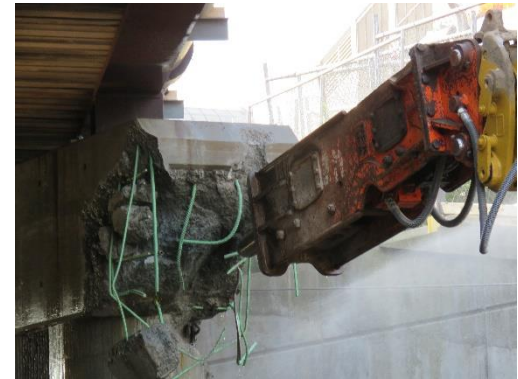


## Track Shift Overview

- Conceptual Project Sequencing



- Medford Utility Bridge pier demo





- Tree clearing on west side of alignment
  - Phase 2: Clearing on west side of alignment
  - All major tree clearing **complete**





- **Homans Building Demolition**

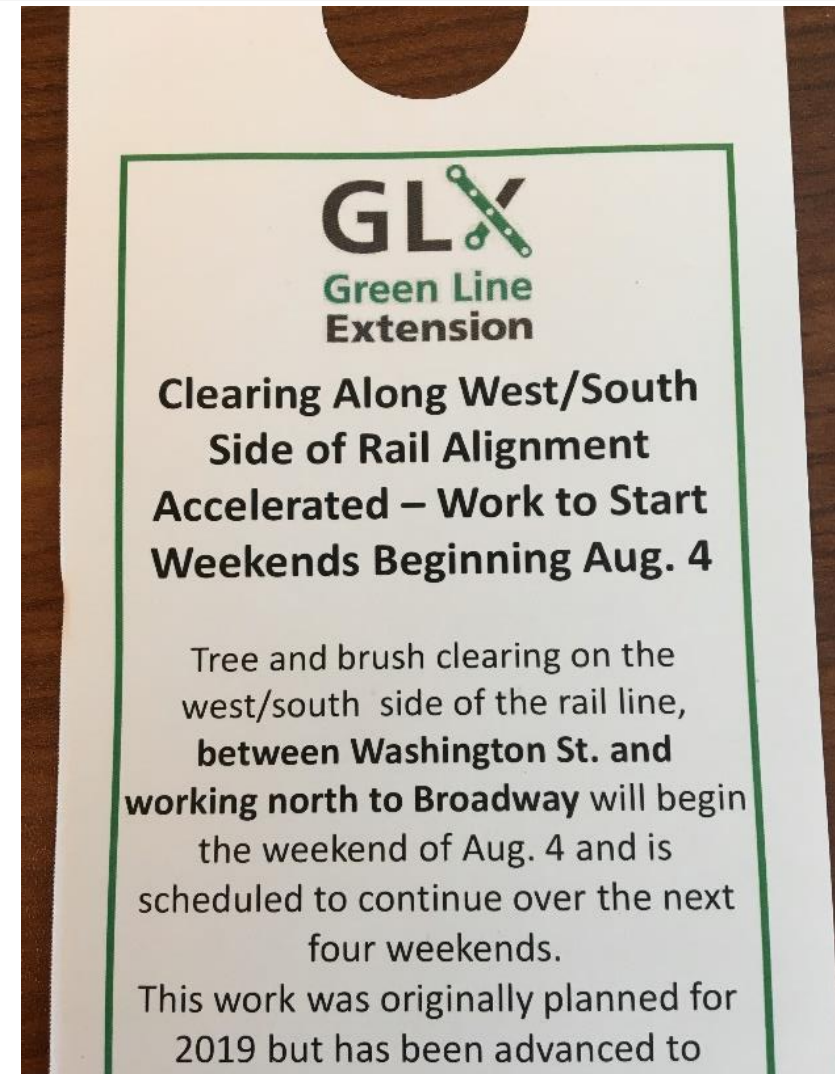
- Demolition September/October 2018
- 3 to 4 week duration including asbestos abatement & debris removal
- Future site of Somerville parking lot and traction power station
- Lion's Head Mold will be created prior to extraction from building face
- Outreach campaign underway with certified letters, door hangers & email blast



# Ongoing Outreach Update

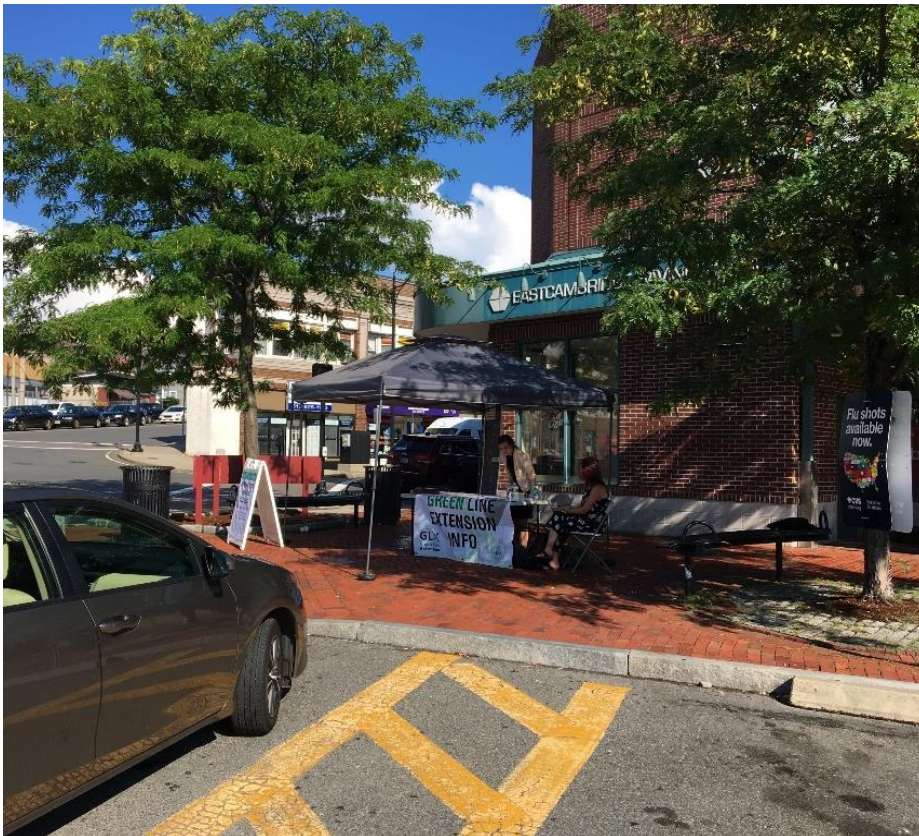
Terry McCarthy, GLXC

- **Door to Door Outreach: Tree Clearing on West Side of Alignment**
  - Week of July 30
  - Update issued Aug. 15 for work up to Winthrop St.





- **Somerville Tabling Session re: Broadway Bridge Closure**  
– Thursday, August 9 at Magoun Square



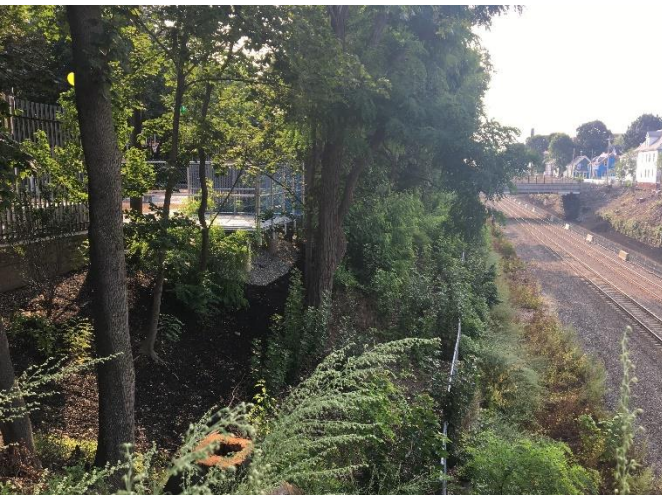


- **Somerville Tabling Session re: Broadway Bridge Closure**
  - Saturday, August 18 in front of Blue Cloud Gallery





- **Somerville's Hoyt Sullivan Playground Opening**
  - Friday, August 24, near Central Street







- **GLX vs GLXC Softball Game**
  - Wednesday, August 8 at Trum Field #2 in Somerville




Mass.gov


 **Massachusetts Bay Transportation Authority**

 **massDOT**  
Massachusetts Department of Transportation


[Home](#) [Community Working Group](#) [About This Project](#) [Project Documents](#)



**GLX**  
Green Line  
Extension

 **PROJECT UPDATES**

Construction Outlook (August 18 - August 31, 2018)

 **UPCOMING MEETINGS**

GLX Community Working Group  
Monthly Meeting





Select Language ▼ State Organizations Log In to...

Search Mass.gov

SEARCH

LIVING ▼

WORKING ▼

LEARNING ▼

VISITING & EXPLORING ▼

YOUR GOVERNMENT ▼

# Green Line Extension Project (GLX)

The Green Line Extension (GLX) project will extend the existing MBTA Green Line north of its current terminus at Lechmere Station to further service the communities of Somerville, Cambridge, and Medford.

TELL US WHAT YOU THINK



**massDOT**  
Massachusetts Department of Transportation

## Discussion