

# **Charles River Dam Road (Craigie Bridge)**

**MassDOT Highway Division  
Department of Conservation and Recreation**

**December 18, 2018**

# Commitments – Other Charles River Crossings

- Longfellow Bridge
  - Winter commitments
  - Design Spring pilot
- Massachusetts Avenue Bridge
  - Install speed feedback radar signs (Spring 2019)
- Boston University Bridge
  - Install flex-posts at the intersections (Spring 2019)

# Path to Providing Bike Facilities

- Improvements on Charles River Dam Road (Craigie Bridge) will be done in Spring 2019
- These changes will have impacts to the cross section
- We need to hear from you.
  - What do you like?
  - What do you want to see and experience?
  - What don't you like?

# **Additional Safety Improvements**

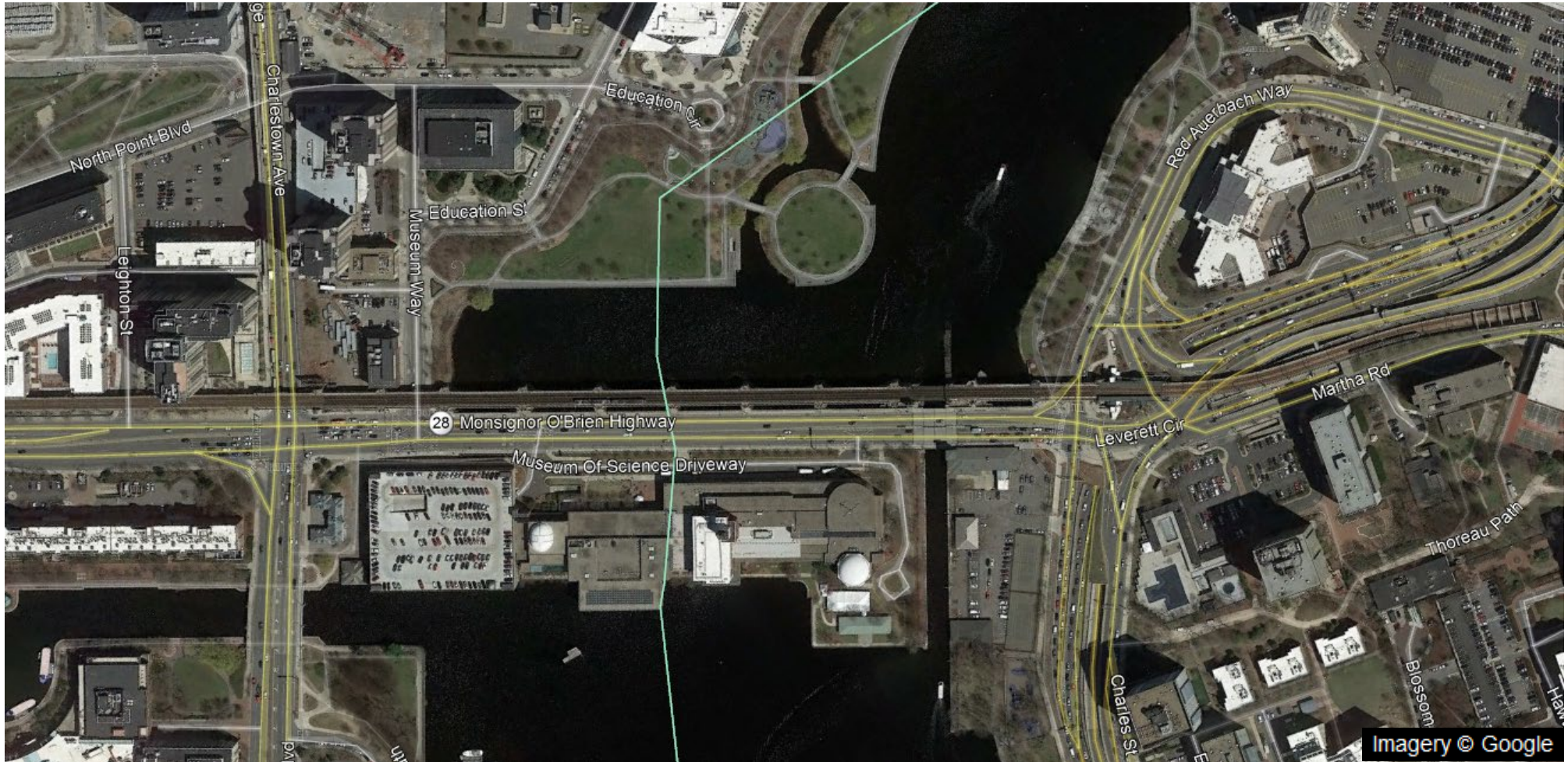
- ✓ Change speed limit signs to 25 MPH (Dec 2018)
- Install speed feedback radar signs (Jan 2019)
- Conduct Road Safety Audit (Winter 2018/2019)
- Install pavement marking changes (Spring 2019)
- Install flexposts if possible (Spring 2019)

## Next Steps

- Gather feedback from you tonight
- Conduct Road Safety Audit
- Develop final design
- Host meeting Winter 2019 to present design
- Implement new striping plan in Spring 2019
- Gather data on effectiveness



# Project Area





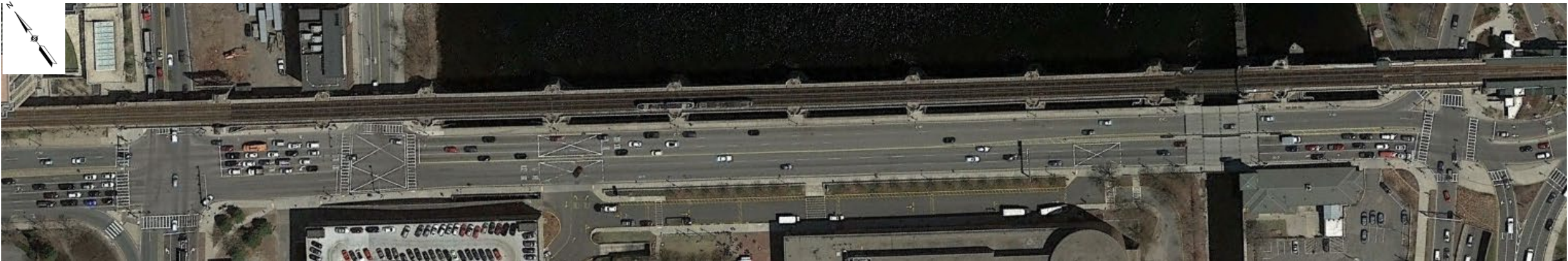
# Current Conditions

- Segment between Land Boulevard and Leverett Circle
- Posted speed limit: 25 MPH
- Pavement width: 64 feet
- AADT: 37,500 (September 2018)
- Two bridges:
  - Craigie Drawbridge
  - Craigie Dam
- Buses to Museum of Science



# Current Conditions

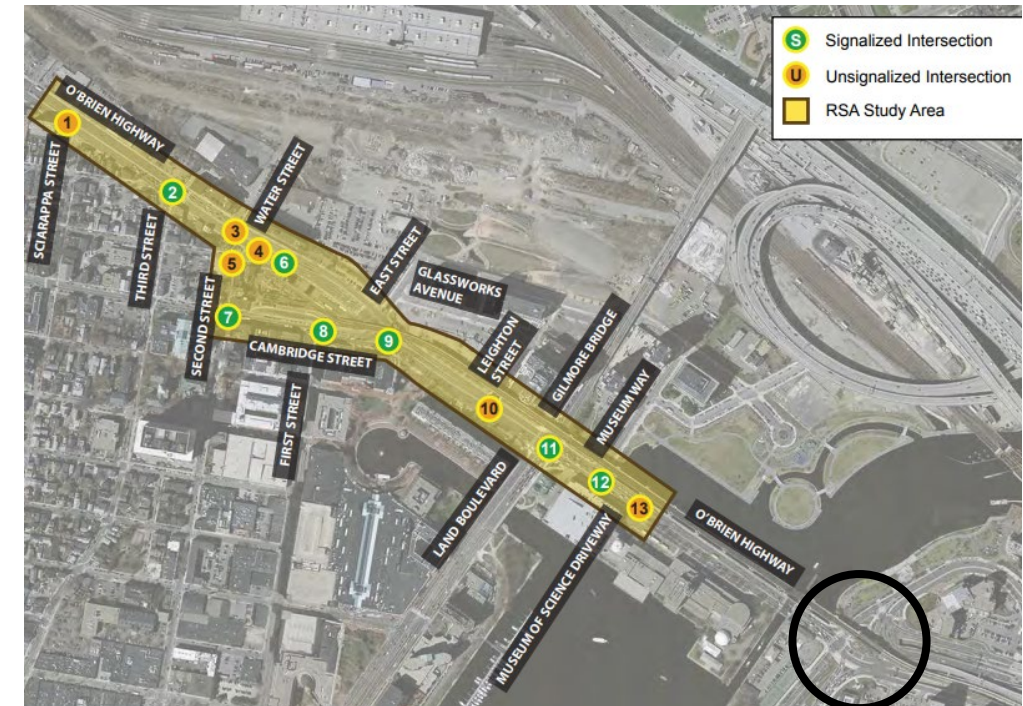
- No dedicated bike facilities
- People are biking in travel lanes and on the sidewalks
- Sidewalks on both sides
- 6 vehicular travel lanes
- No defined turn lane into Museum of Science





# Current Conditions

- Conducted Road Safety Audits\* nearby:
  - Leverett Circle (October 2015)
  - Monsignor O'Brien Highway (June 2014)
  - Charles River Dam Road (Winter 2019)



\*Road Safety Audit examines existing conditions regarding safety by an independent, multi-disciplinary team

# Constraints

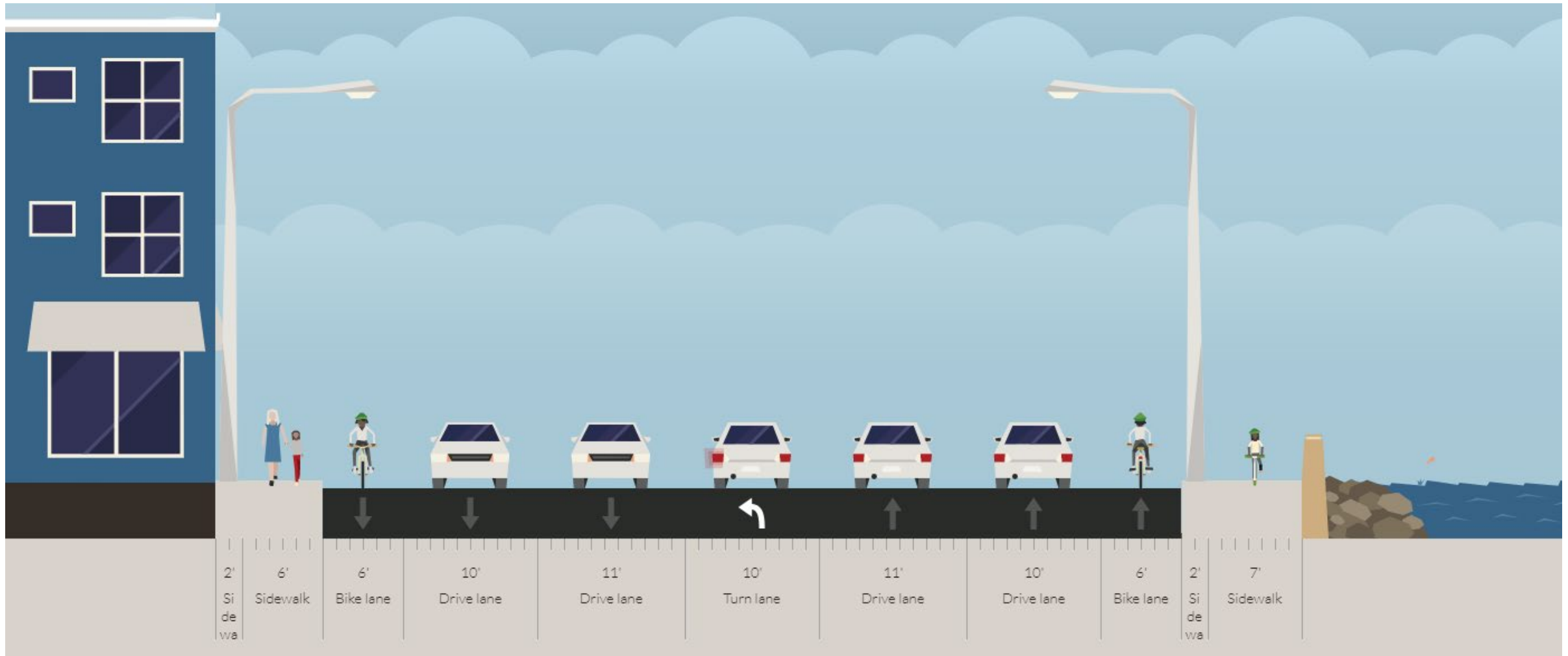
- Curb to curb width: 64 feet
- Two fixed bridges
- Provide 5 travel lanes

## Option A (developed in 2008)

- Adds continuous on-road bike lanes
- Maintains existing sidewalks
- Removes 1 travel lane (5 total vehicle travel lanes)
- Provides 2 travel lanes in each direction
- Adds a left turn lane into Museum of Science



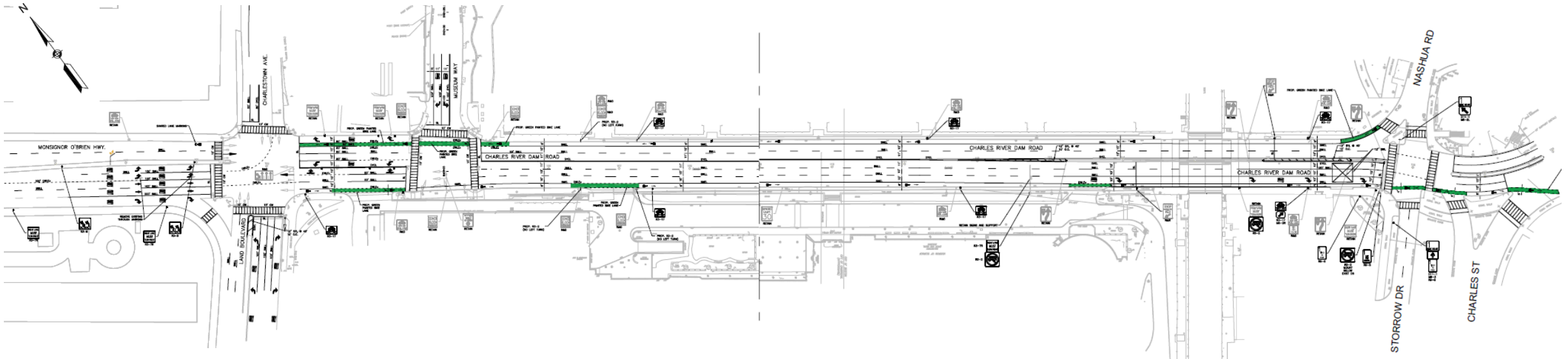
# Option A



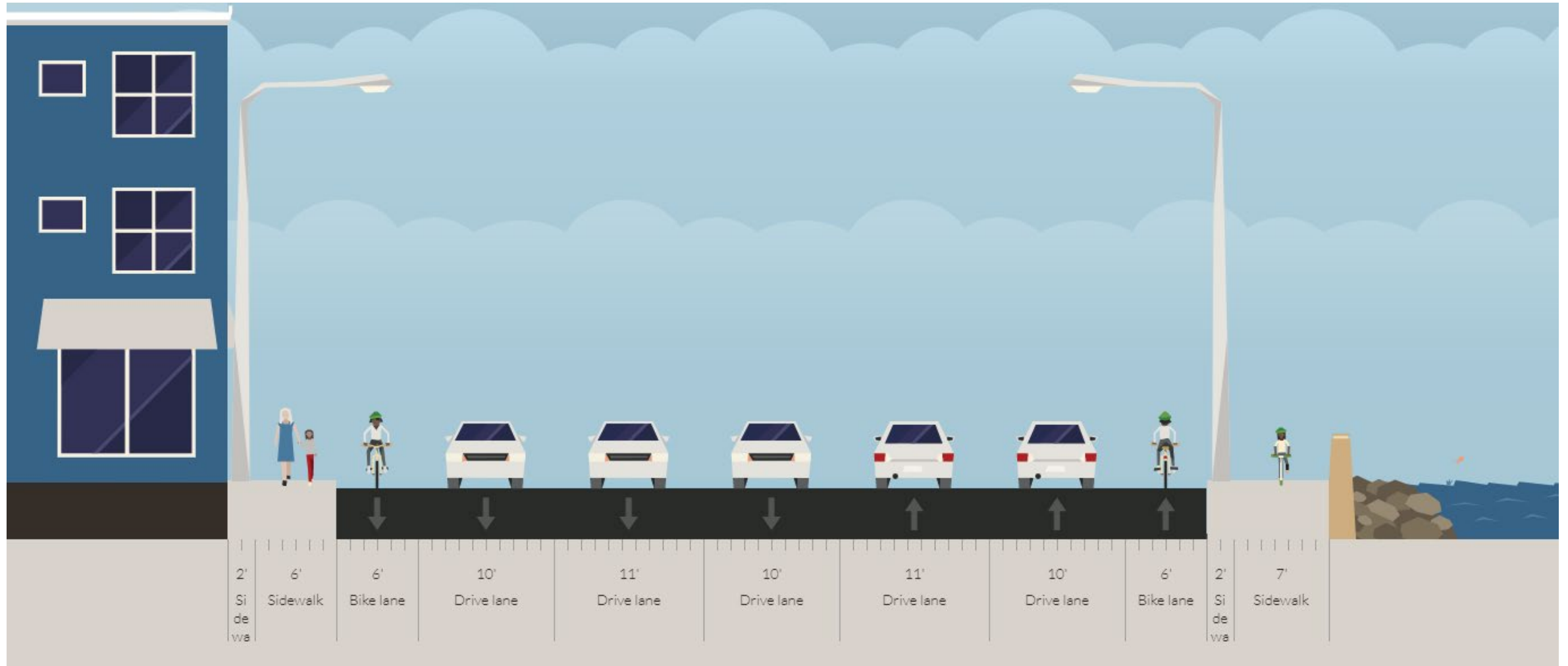


## Option B

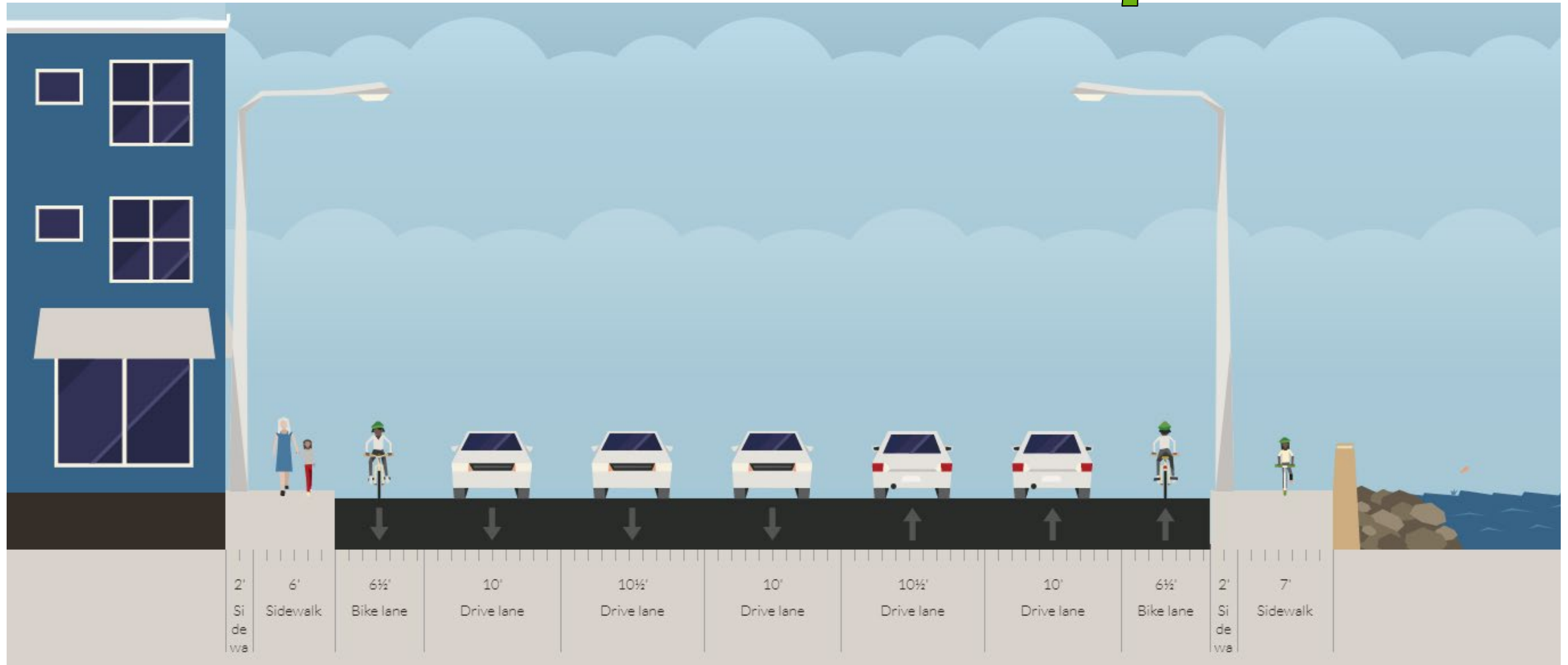
- Same as Option A except:
- Provides 3 travel lanes to Leverett Circle
- Restricts left turns into Museum of Science



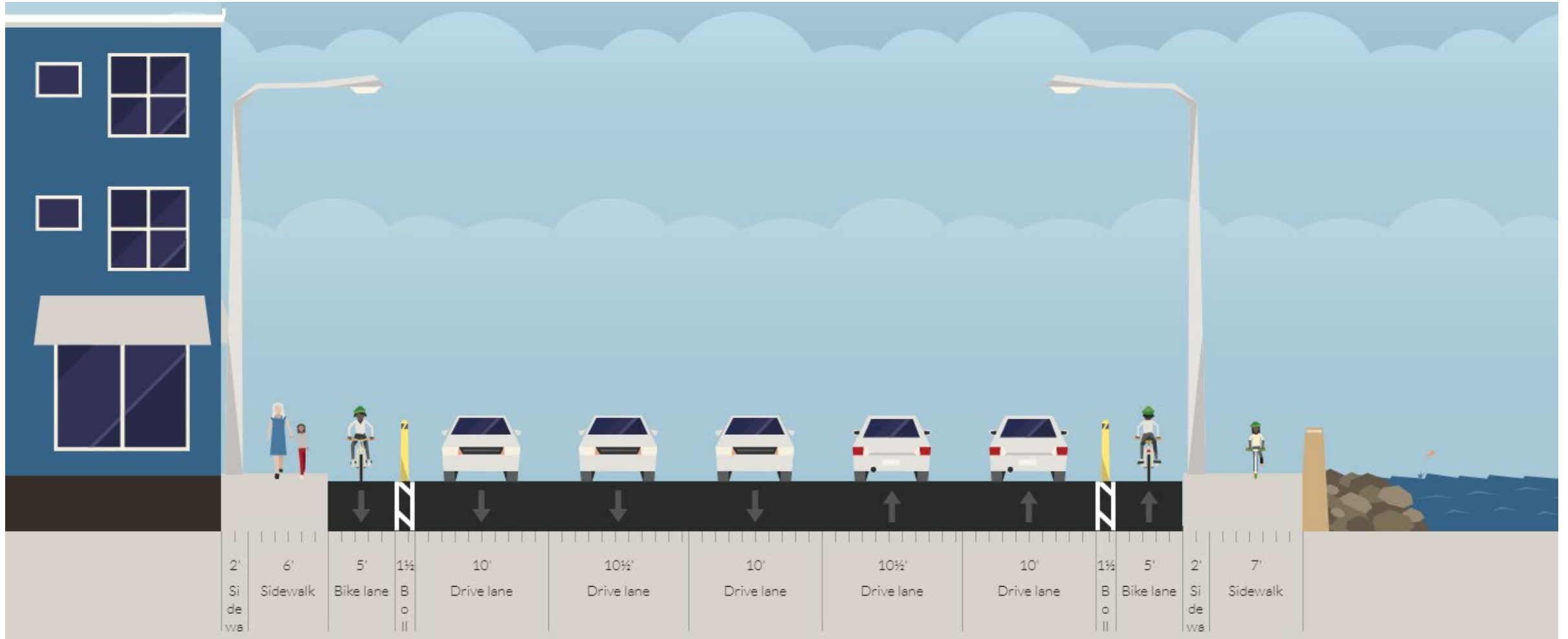
# Option B



# Potential Short-term Option

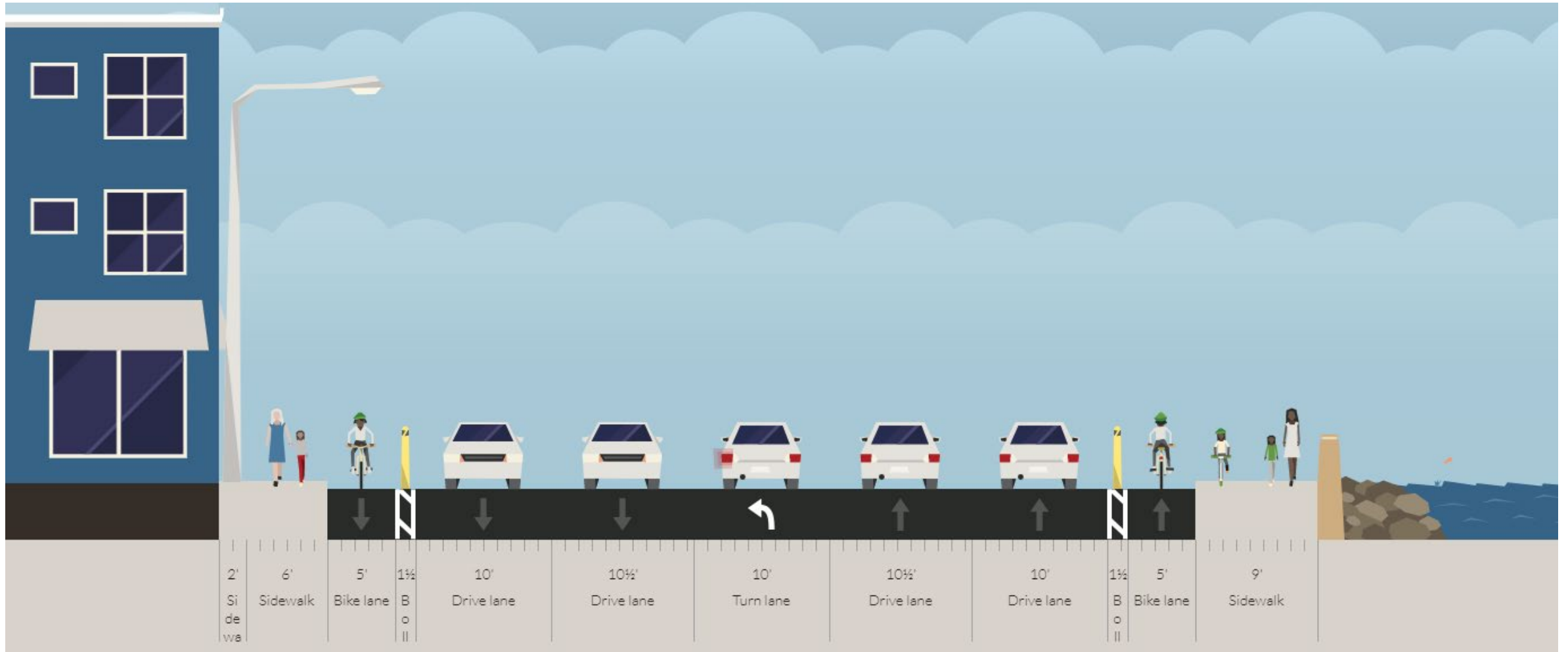


# Potential Short-term Option

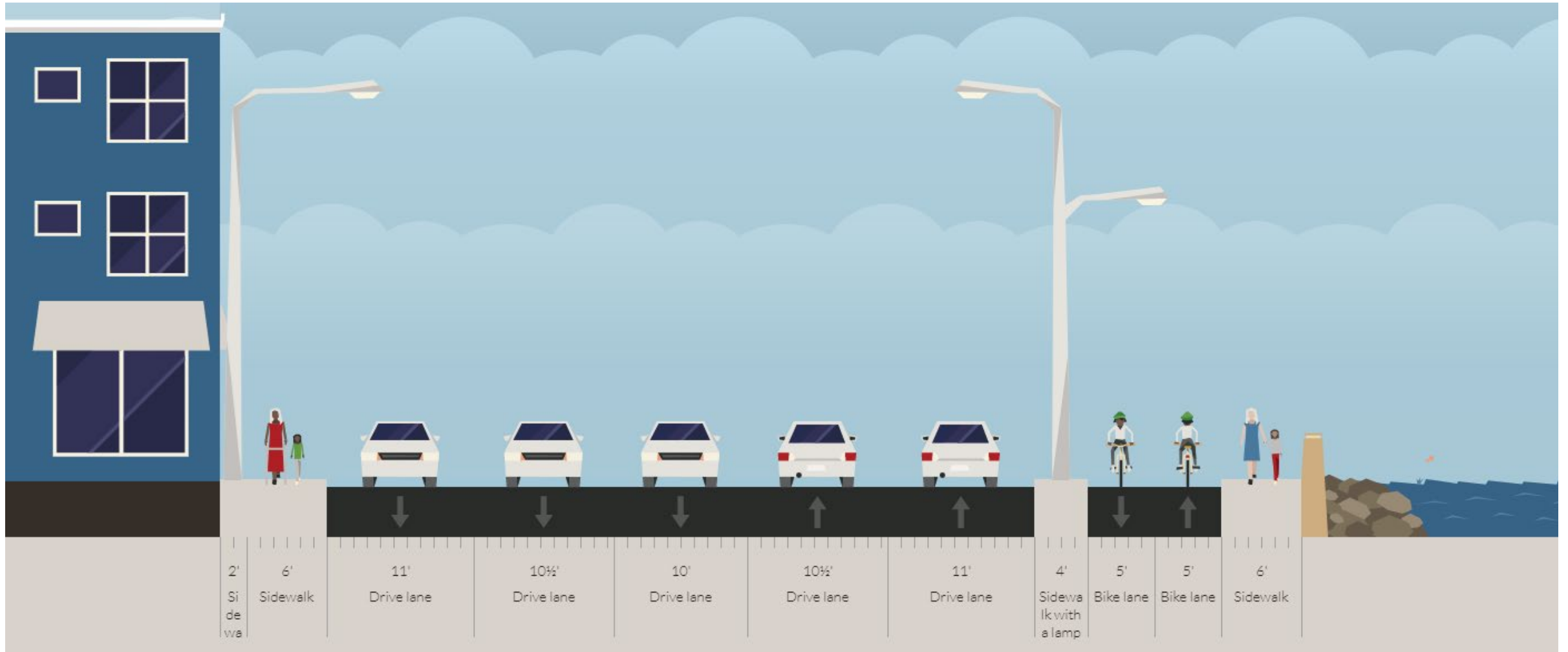




# Potential Long-term Option



# Potential Long-term Option



# Open House

## What would you like to see on Charles River Dam Road? Provide your ideas and comments

The presentation made will be viewable after the public meeting on DCR's website at [www.mass.gov/dcr/past-public-meetings](http://www.mass.gov/dcr/past-public-meetings). The public will be invited to submit comments after the meeting, with a deadline for receipt by DCR of January 22, 2019. Comments may be sent to Jeff Dietrich at [jdietrich@hshassoc.com](mailto:jdietrich@hshassoc.com) or by phone at 617-482-7080 x220