

Melnea A. Cass Recreation Complex Capital Improvements



Meeting logistics

Recording

The recording and presentation of tonight's meeting will be

available at:

www.mass.gov/dcr/past-public-meetings



Interpretation

- We are offering interpretation in Spanish, Haitian Creole, and ASL.
- In your meeting controls, click Interpretation (the small globe icon) and click the language that you would like to hear.

ZOOM TIPS


Here is how you can participate during the question and answer part of the presentation.


DURING THE PRESENTATION:

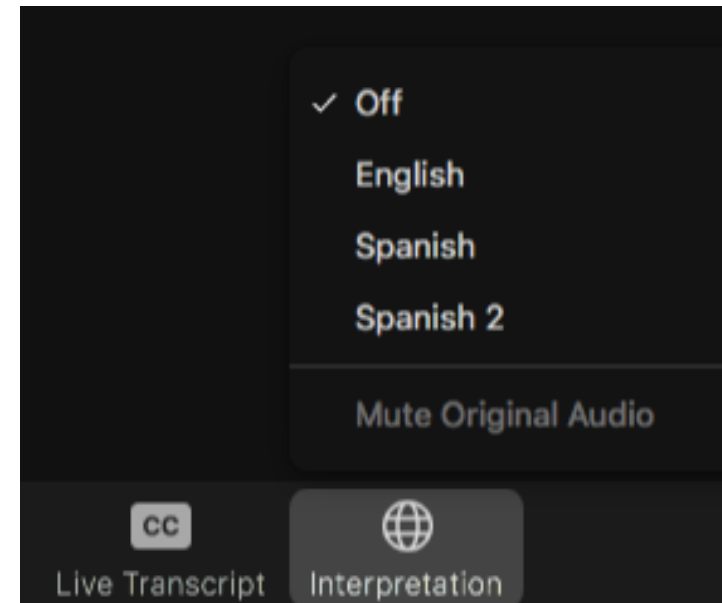
  **VIA WEB:**
Turn video on / off.

DURING THE Q&A:

 **JOINING VIA PHONE?**
Use *9 to raise hand to ask for audio / video permission to ask questions or provide comments.

 **VIA WEB:**
Chat to ask questions / comments or provide responses to poll questions

 Raise hand to ask for audio / video permission to ask questions or provide comments.





Commonwealth of Massachusetts

Governor

Maura T. Healey

Lieutenant Governor

Kimberley Driscoll

Energy and Environmental Secretary

Rebecca L. Tepper

Department of Conservation and Recreation Commissioner

Brian Arrigo

DCR MISSION

*To protect, promote and enhance our
common wealth of natural, cultural
and recreational resources for the
well-being of all.*

AGENDA

Welcome & Opening Remarks

Shelter Operation Update

Timeline

Improvements

Q & A

TEMPORARY SHELTER OPERATIONS



Demobilization & Facility Cleaning starting in May



Returned to DCR Management June 1, 2024



Facility will retain equipment and furnishings (tables, chairs, shelving, appliances)

TIMELINE

PHASE 1

SWIMMING POOL OPENS SATURDAY JUNE 22, 2024



PHASE 2

ARENA REOPENS LABOR DAY
NEW ATHLETIC FLOOR AND UPGRADES TO LOBBY



PHASE 3

POOL HOUSE CONVERTED TO MULTI-PURPOSE ROOM
ROOF SOLAR INSTALLATION

Phase 1 Improvements



Swimming Pool Opens June 22nd



Improvements to Pool bathrooms
and showers



New Shade & Tree Planting at
Entrance Plaza



Operational Wifi Network

Phase 1 Improvements – Entrance Plaza Shade

CASS ENTRANCE SHADE

1



SOLAR SHETLER

2



- a. *Cercis canadensis* (no cultivar)
- b. *Ostrya virginiana*

3



AWNING



PHASE 2 Improvements

Upgrades to Arena

- New Arena Floor
- New Sound System
- Protective Padding at Interior Walls

New Athletic Equipment

- Nets, goals, benches, and more

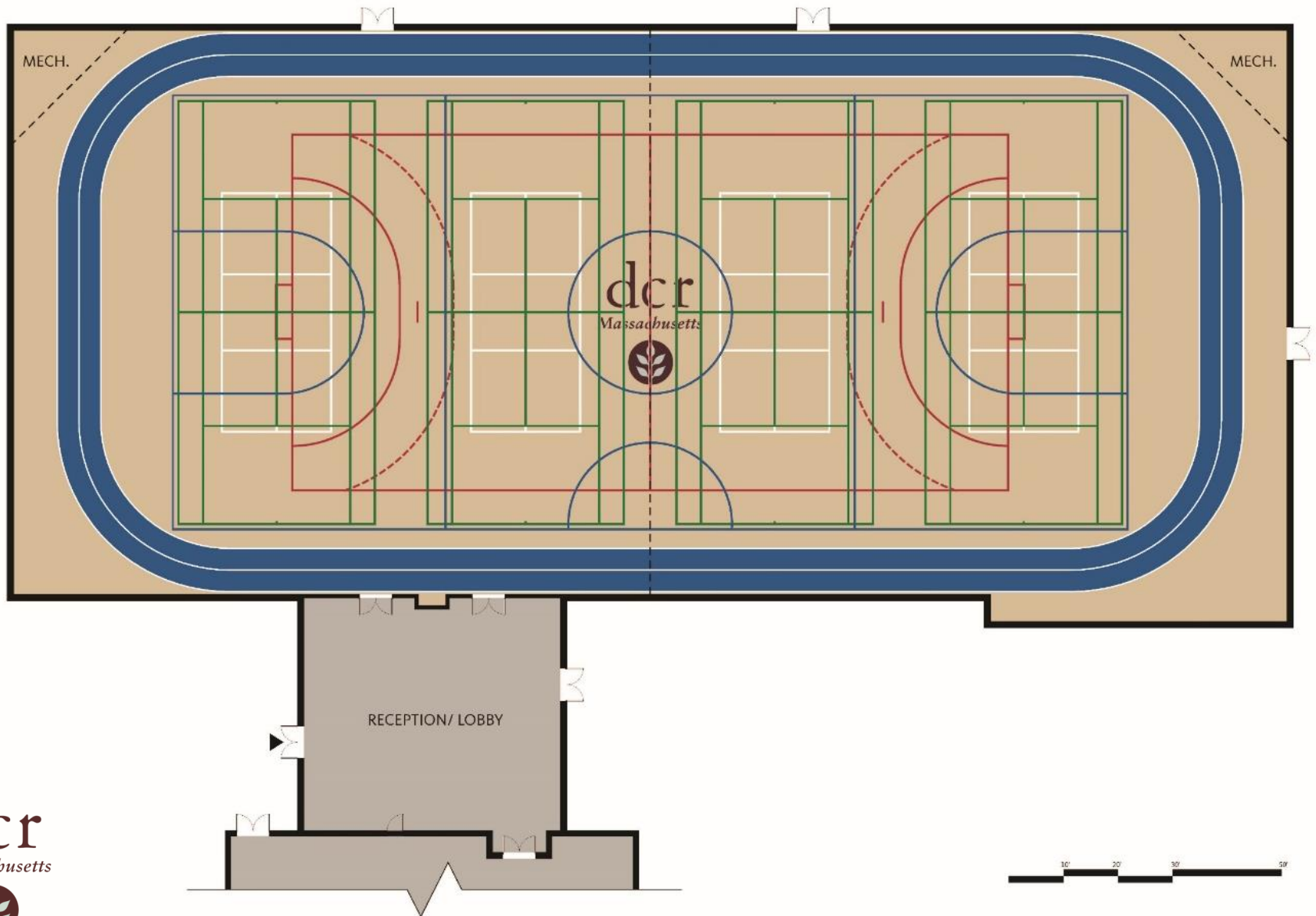
Potential New Sign

- Front Entrance Sign

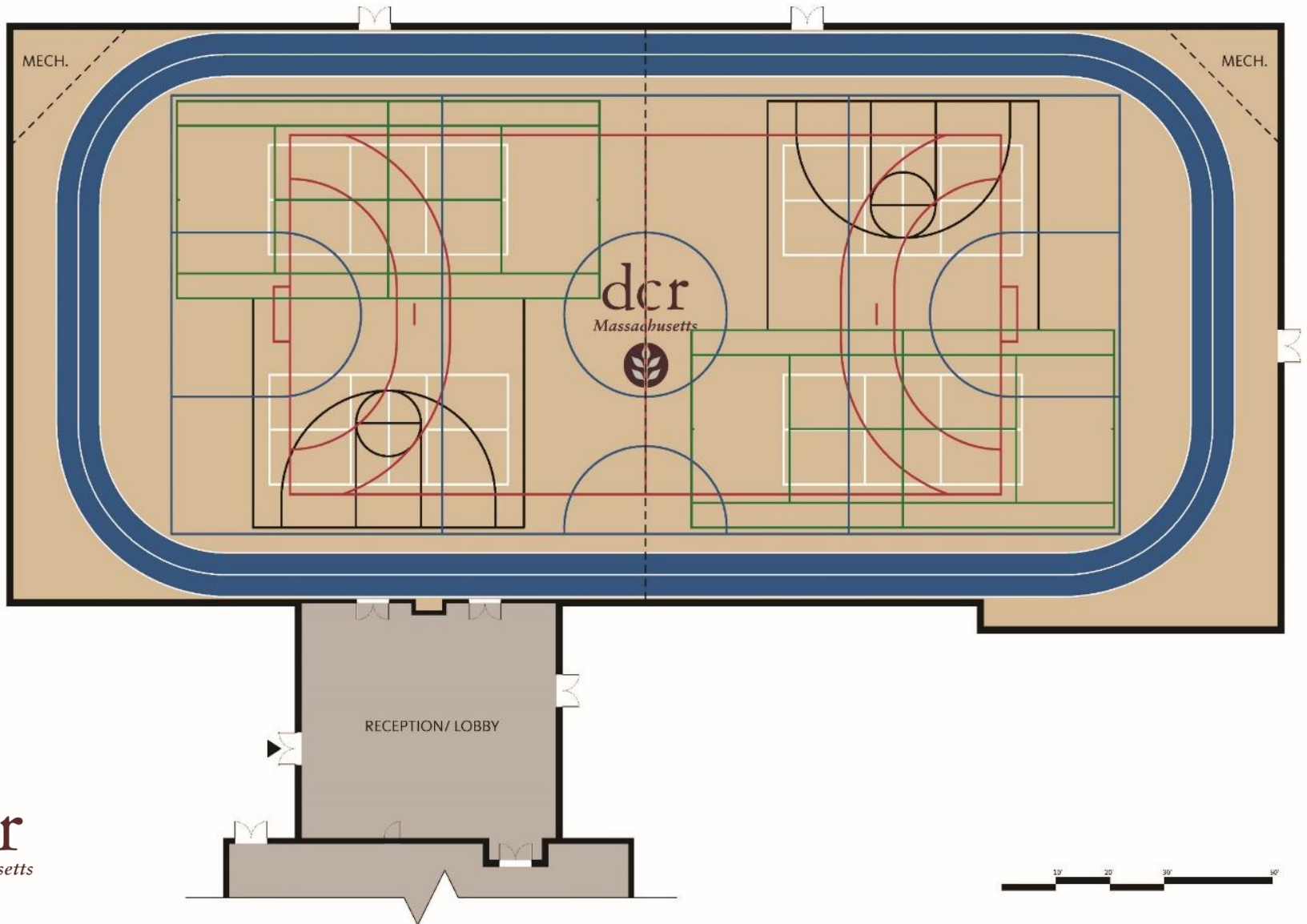
Lobby Upgrades

- Flooring
- Information Monitors
- Front Desk

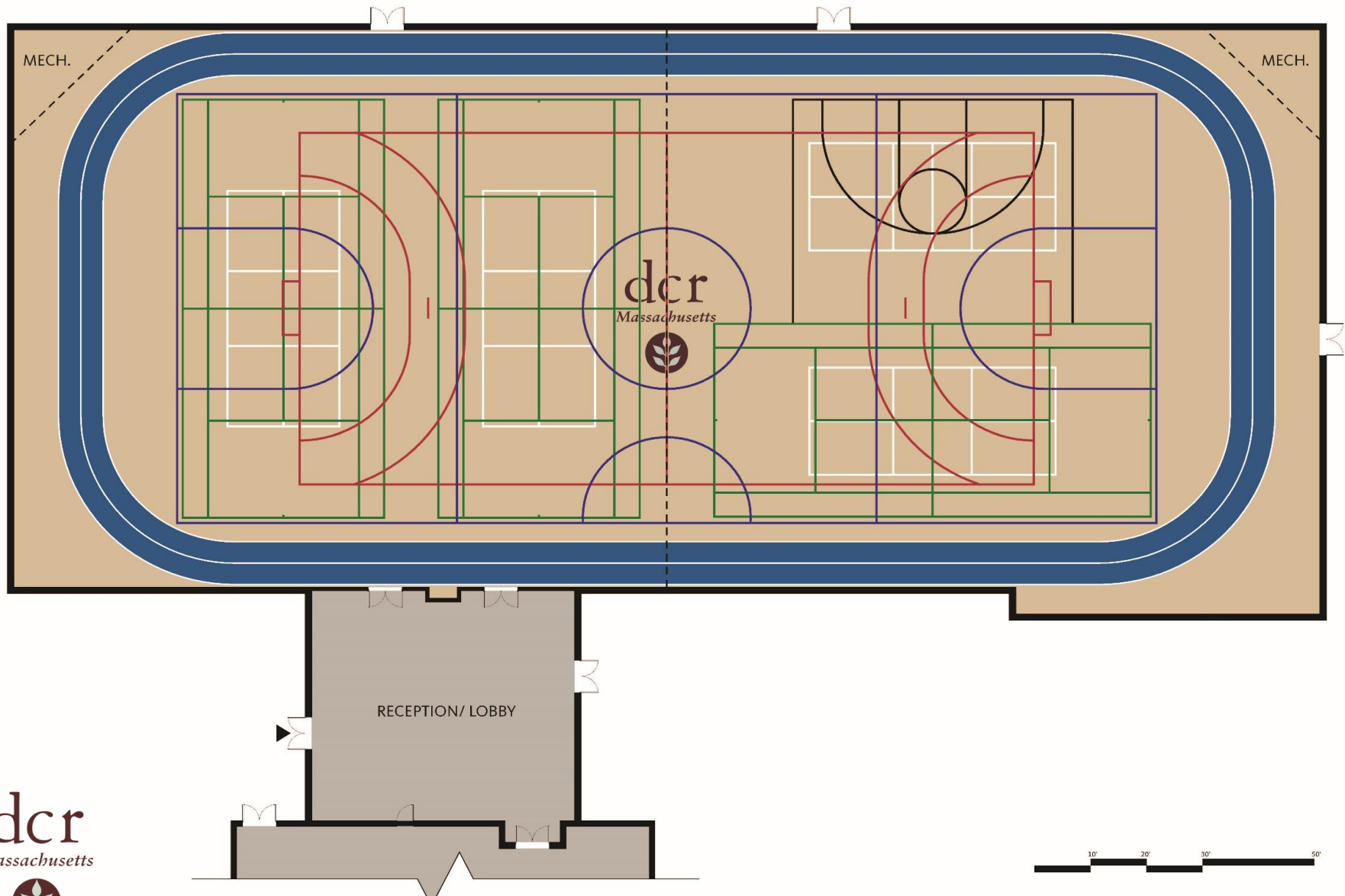
New Arena Floor – Option #1



New Arena Floor – Option #2



New Arena Floor – Option #3



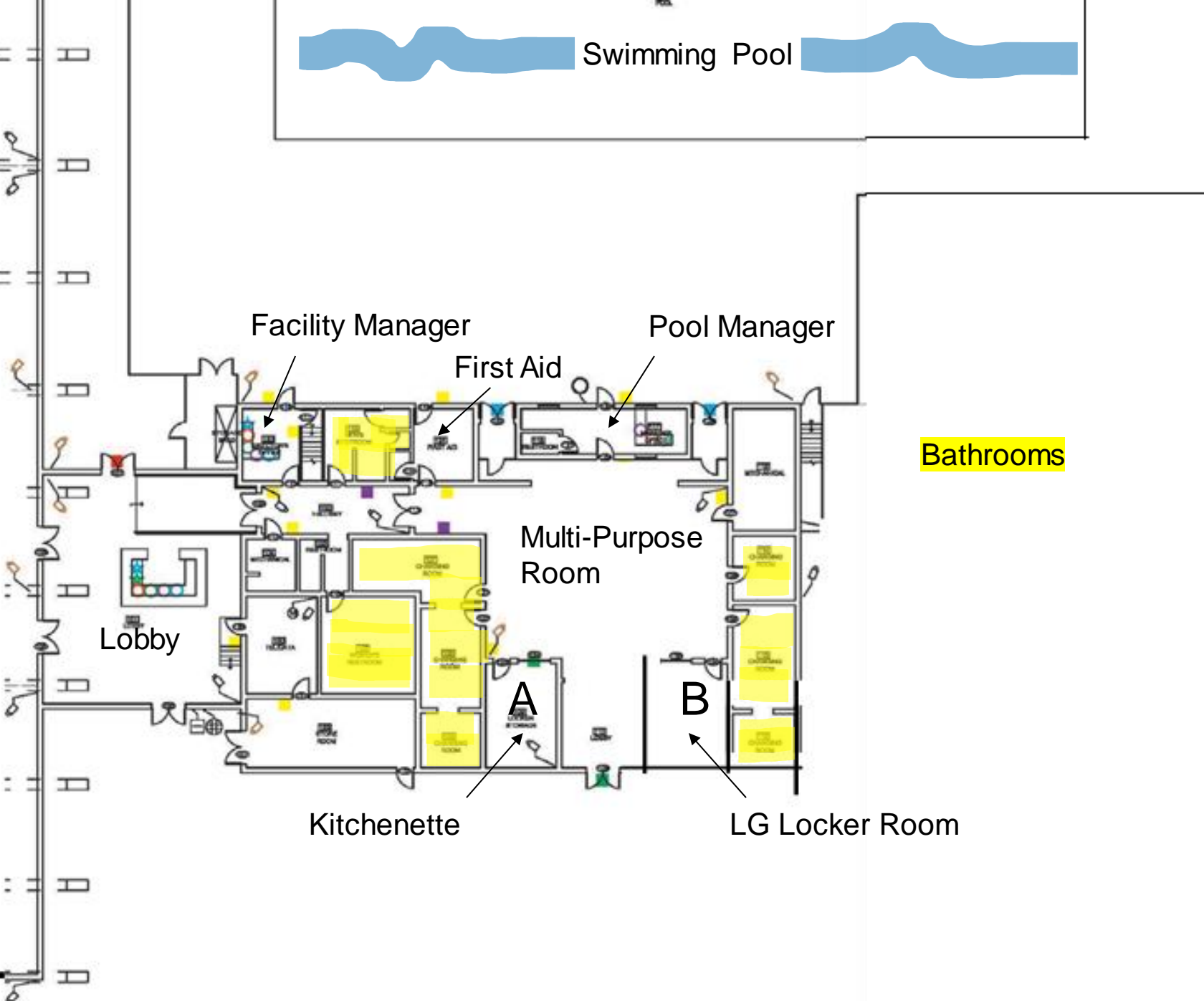
Potential New Sign



Existing Cass Entrance Sign



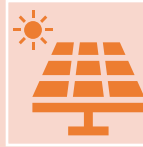
RCC Entrance Sign
with a message screen



Phase 3 Improvements



Multi-Purpose Room
Finishes



Roof Repairs w/Solar on
Arena



New Garage Door at
Arena (Shelburne end)



Spray Deck Upgrades

Additional Information

- Tonight's slide deck will be available at:

- www.mass.gov/dcr/past-public-meetings

- Public comment will be open until May 13, 2024, please submit comment at:

- <https://www.mass.gov/forms/dcr-public-comments>

- If you wish to subscribe to a DCR updates please contact: mass.parks@mass.gov

Thank you!

Any Questions?