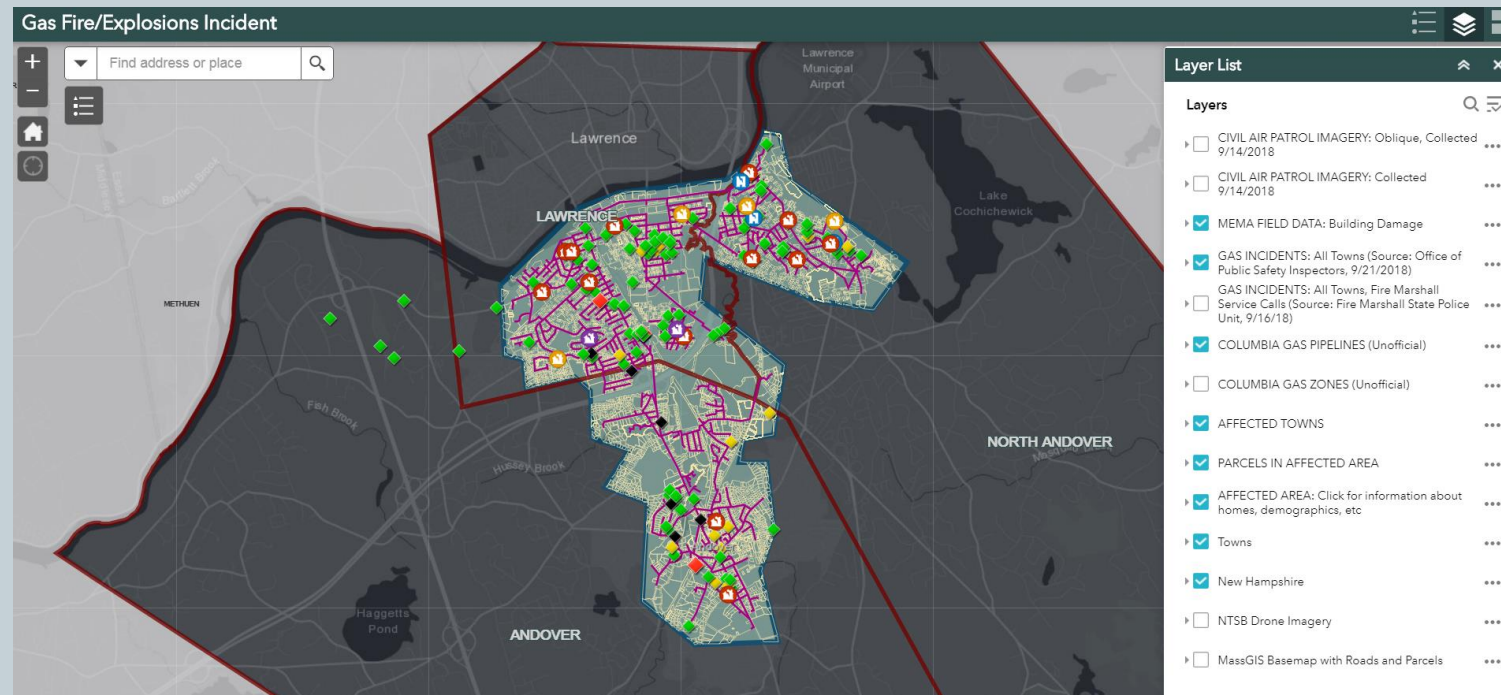


# MEMA Damage Assessments



# Rapid Impact Assessment Teams (RIAT)



- Rapid Impact Assessment (RIA):
  - Assists decision-makers in developing priorities/objectives for incident response activities and determining the need for outside resources and mutual aid requirements.
  - Initiated during the response phase of an incident, generally within 24-36 hours of impact with the goal of improving Situational Awareness (SA) and developing a Common Operational Picture (COP).
  - Incorporates in-field “windshield surveys” of impacted communities with the goal of assessing disaster impacts.
  - May be accomplished by touring impacted areas by car, on foot, by drone, or by aircraft, GIS, talking with local officials and private sector partners, review of self-reported information, and monitoring media reports.

# RIAT Composition

- **Rapid Impact Assessment (RIA):**
  - Led by a Rapid Impact Assessment Unit Leader under MEMA Operations Section
  - Teams are comprised of a cadre of trained individuals with state and local disaster assessment experience.
  - Teams are organized and assigned based on expertise and assessment needs. Areas of team expertise may include ground, coastal or aerial assessment.



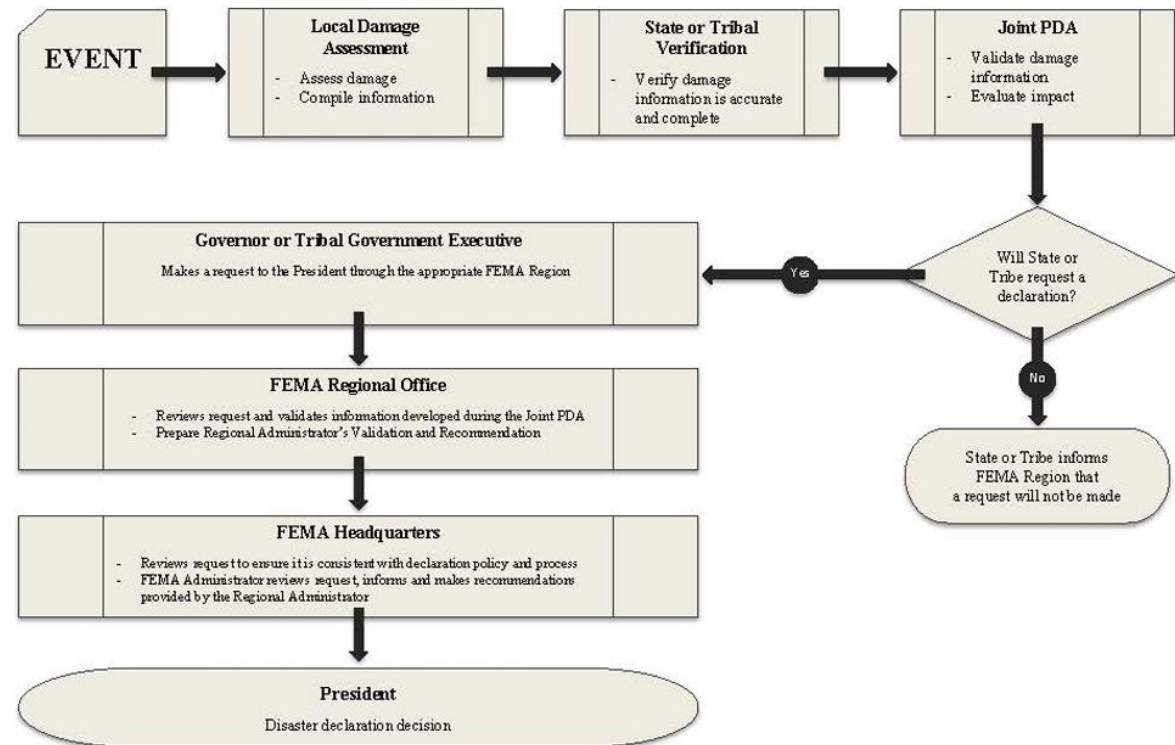
# Damage Assessment – Recovery Phase

## ***STEP ONE***

**State Initial Damage Assessment (IDA)**: The effort by State and local authorities to collect data related to the extent of damage within a jurisdiction.

## ***STEP TWO***

**Joint FEMA/State/Local Preliminary Damage Assessment (PDA)**: The coordinated effort by federal, state and local authorities in order to determine whether the State will pursue a Presidential disaster declaration.





# Initial Damage Assessment (IDA)



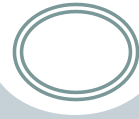
- Led by the MEMA Disaster Recovery Unit, in coordination with MEMA Regional Offices, local EMDs, state agencies/authorities, and private non-profit organizations.
- Gather preliminary estimates of event related costs and damages to:
  - Public infrastructure, emergency response costs, debris removal (Public Assistance)
  - Impacts to residential structures and businesses (Individual Assistance)
- Used to identify whether any counties and/or state may have reached financial cost thresholds that would support a federal disaster declaration request.

# Local EMD Best Practice



- **Document Everything**
  - Assignment Logs, Equipment Logs, and Timesheets
  - Event and Call Logs and Resource Requests
  - Contracts, Invoices, Purchase Orders, Receipts
  - Weather Reports and Status
  - Photos, Photos, Photos
- **Leverage Local Expertise**
  - Local Departments of Public Works, Transportation, Energy, Parks, etc
  - Local Housing Inspectors and Code Enforcers
  - School and Public Building Facilities Personnel
- **Map Assessment Efforts and Damages**
- **Maintain Documentation and Records**

# Reporting IDA Information



- MEMA Initial Damage Assessment (IDA) Form
- MEMA Just-in-Time Training
- High-level estimates (no backup documentation needed at this time)

***EMERGENCY WORK*** – emergency protective measures, debris removal, snow assistance

***PERMANENT WORK*** – REPAIR/RESTORE DAMAGED INFRASTRUCTURE TO PRE-DISASTER CONDITION.

Facilities include roads/bridges, water control facilities, public utilities, building/equipment, public recreational facilities

# Reporting IDA Information



## Federal Highway Administration

Emergency and permanent work to restore roads and bridges is eligible UNLESS restoration is under the specific authority of another Federal Agency such as the Federal Highway Administration (FHWA), therefore these costs should not be included in the IDA Form.

Other costs potentially eligible for PA but not considered for IDA/PDA:

- Administration or management
- Cost of engineering
- Cost to upgrade codes and standards, and
- Cost of mitigation measures



# Ineligible Public Assistance Costs

- Economic and Business Impacts
  - Agricultural Land and Crops will be covered by USDA
- Insured Damages
  - Deductible only
- Unrepaired Damages and Deferred Maintenance
- Unimproved Roadways

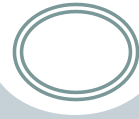


# Joint Preliminary Damage Assessment (PDA)



- Coordinated by MEMA Disaster Recovery Unit, comprised of representatives of FEMA, MEMA Regional Offices, local government, other state or federal agencies and voluntary relief organizations, as needed.
- Used to identify and validate reported estimates of event-related costs and determine whether any counties and/or state may have reached financial cost thresholds that would support a federal disaster declaration request.
- Identify disaster impacts to community functions and services, underserved communities, functional needs communities, and unmet major resource needs.
- Limited timeframe to complete assessment (30 days to apply for federal disaster assistance).

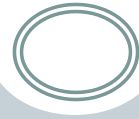
# Preparing for a Joint PDA



Before PDAs begin, the State (MEMA) will host a webinar for selected PDA communities to:

- Explain team roles
- Review documentation requirements
- Disaster Impact Statements

# Resources



- MA Damage Assessment Coordination Plan
- <https://www.mass.gov/doc/damage-assessment-plan>
- FEMA Public Assistance Per Capita Impact Indicators <https://www.mass.gov/doc/fema-public-assistance-pa-thresholds-fy2022/download>
- 44 CFR 206.33 (PDA) <https://www.ecfr.gov/current/title-44/chapter-I/subchapter-D/part-206/subpart-B>