



Memorial Drive Phase III Construction Project August – September 2025



Pre-Construction Briefing

Massachusetts Department of
Conservation and Recreation



Memorial Drive Phase III Construction Project
Charles River Reservation
Cambridge, Massachusetts



Commonwealth of Massachusetts

Governor

Maura Healey

Lieutenant Governor

Kim Driscoll

Energy and Environmental Secretary

Rebecca Tepper

Department of Conservation and Recreation Commissioner

Nicole LaChapelle

DCR Mission Statement

*To protect, promote and enhance our
common wealth of natural, cultural
and recreational resources
for the well-being of all.*



Esplanade Cross Section

Memorial Drive Reconstruction

Longfellow Bridge to BU Bridge
PHASE 1- 2004



Memorial Drive Cross Section

- Memorial Drive Demonstration Project
- Road Diet – one EB travel lane and several parking spaces removed to expand riverfront parkland
- Provided stabilized aggregate path connection to Longfellow Bridge
- 12 Shurcliff benches and a drinking fountain installed
- New tree plantings - 30 Red Maples, 23 Pin Oaks, 5 Swamp Oaks and 10 Silver Lindens
- Stormwater improvements – new drainage pipes, structures, water quality units & other BMPs
- Landscape paving, seeding & lawn sodding
- New traffic signal equipment, signs & pavement markings
- Refurbished/replaced embankment fencing
- Total Cost \$6.2 million

Memorial Drive,
Cambridge, MA

Memorial Drive Reconstruction

Longfellow Bridge to BU Bridge
PHASE II -2016

- Continuous bi-directional shared use path constructed
- Pedestrian stabilized path along Charles River widened
- 12 new Shade shelters installed & 35 Shurcliff benches
- Stormwater improvements – new drainage pipes & structures, water quality units, infiltration trenches & other BMPs
- New lighting system, conduit, handholes & load center
- Upgraded Traffic control equipment, signs and striping
- 320 new tree plantings – Maple, Linden, Oak, River Birch, Tulip, Planetree, Maackia, Horsechestnut and Shadbush
- Extensive riverbank plantings
- Total Cost \$ 9.3 million

Parkland, shared use path, shade shelters & walking path along Charles River



Memorial Drive,
Cambridge, MA



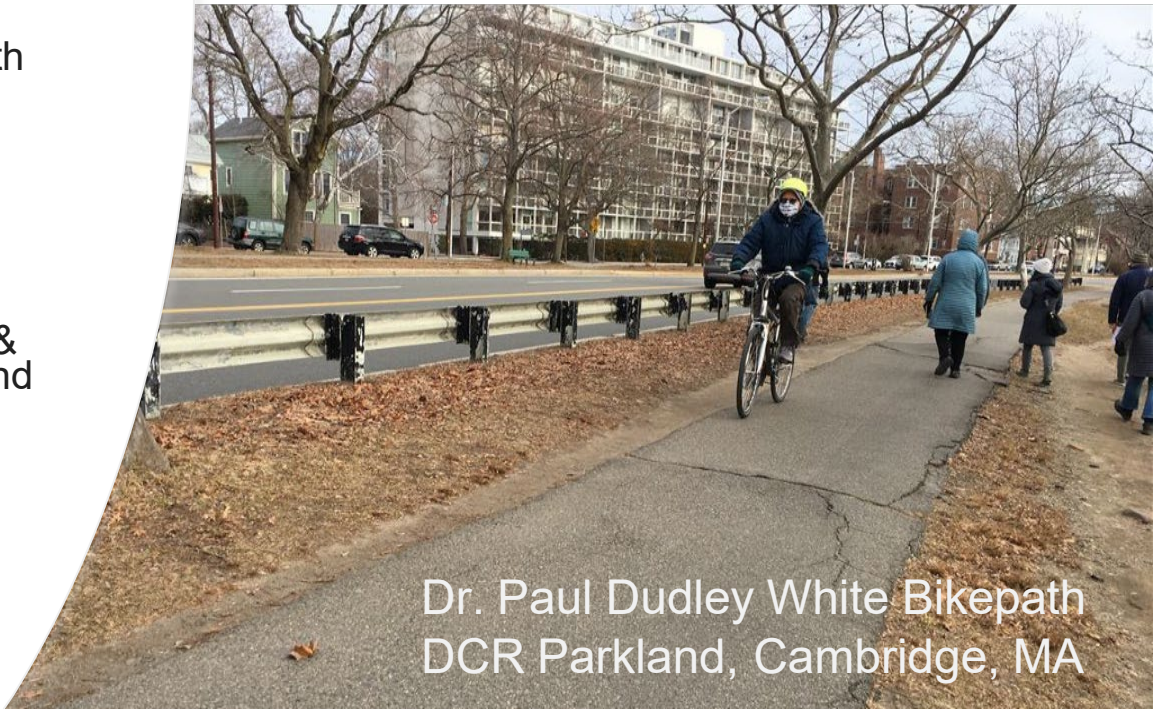
Memorial Drive Phase III Construction Project Goals

- Advances goals of the DCR Charles River Master Plan, DCR Historic Parkway Preservation Guidelines, DCR Parkways Master Plan, and the City of Cambridge Riverfront Plan.
- Protects existing London Plan Allee to maximum extent. Plants 23 new London Plane trees and 56 other native species.
- Expands parkland along the Charles River by 1.16 acres.
- Design to preserve historic features of Charles River Basin Historic District such as sloping pastoral lawns, paths, and shade trees. Remove guardrail at edge of parkland. Added shoulders on both sides of parkway.
- Improve stormwater treatment through green infrastructure, enhancing water quality of the Charles River.
- Extensive Public Engagement.

Memorial Drive,
Cambridge, MA

Memorial Drive Phase III Construction Project Goals

- Addresses current issues with uneven pavement and elevation changes.
- Enhances safety for users of all ages and abilities.
- Provide safe bicycle and pedestrian accommodations through a new paved 11-foot-wide shared use path and a separate 5-foot-wide stabilized aggregate pedestrian path.
- Two mid-block crosswalks and northerly sidewalk restoration enhances riverfront access.
- Provides ADA accessible viewing & seating locations and other parkland amenities (i.e., benches, water fountains, bike racks, rest area, security lighting, etc.)



Dr. Paul Dudley White Bikepath
DCR Parkland, Cambridge, MA

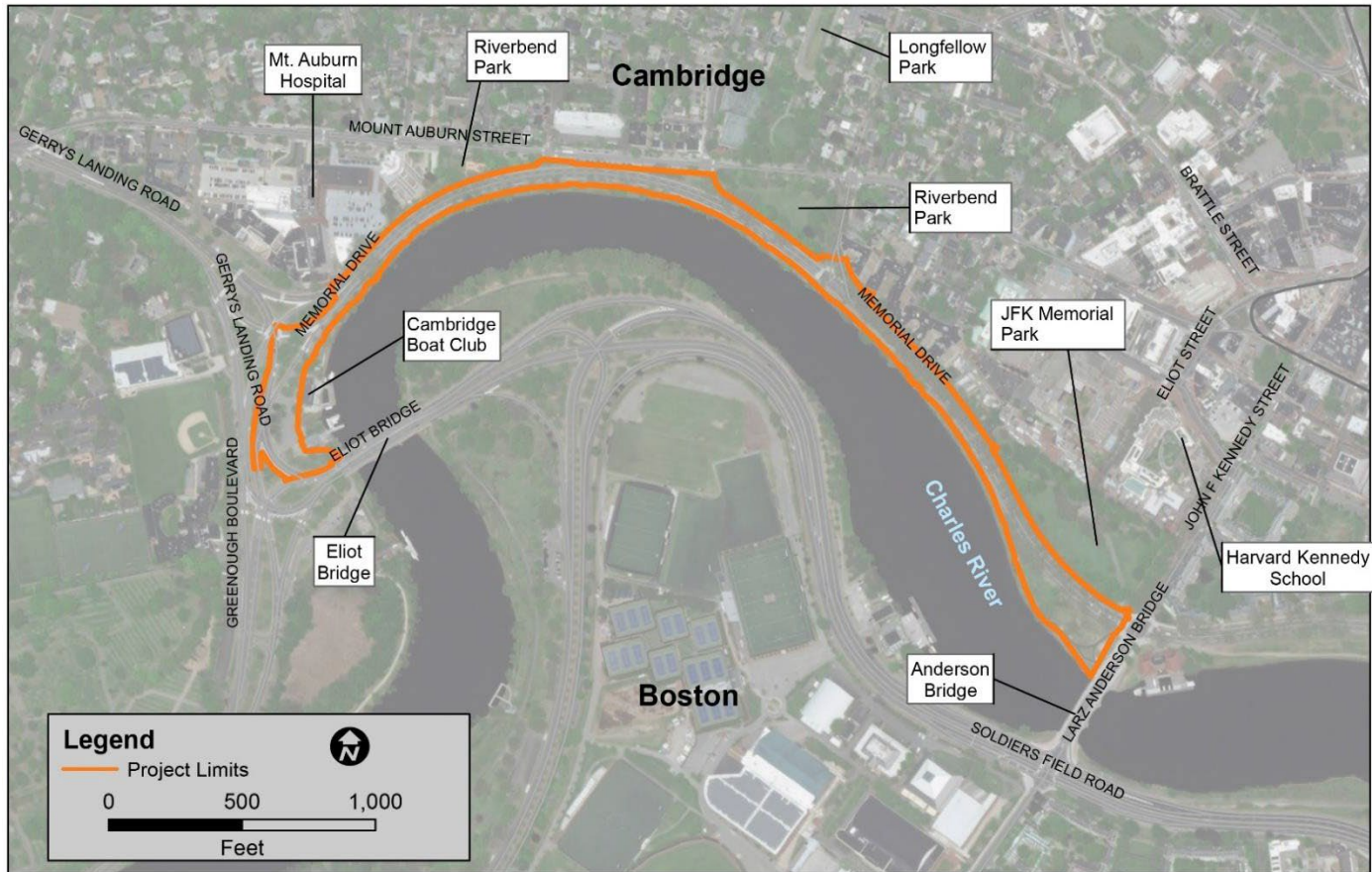
Introduction to the Team

Project Lead: Department of Conservation and Recreation

Consultant Team:

- Stantec Consulting Services Inc.: Design and Permitting
- Brown, Richardson + Rowe: Landscape Design
- LEC Environmental Consultants, Inc.: Wetlands/Permitting Support
- AHS, Inc.: Archaeological/Cultural Resources
- Brennan Consulting, Inc.: Survey/Right of Way

Phase III Project Site



Map Source: Office of Geographic and Environmental Information (MassGIS), Commonwealth of Massachusetts Executive Office of Energy and Environmental Affairs and ArcGIS Online.

Project Location

DCR Cambridge - Memorial Drive Reconstruction
Project Limits - Eliot Bridge to Anderson Bridge
Cambridge, Massachusetts

Getting to Today

2016 – Memorial Drive Phase II completes rehabilitation & restoration of 1.5-mile section

2017 – DCR initiates Memorial Drive Phase III Project - AECOM

2017-2019 Planning and Traffic Studies

2019 – Public Outreach Process - AECOM

- April 11, 2019 Public Listening Session
- June 25, 2019 Public Meeting #2
- Project interactive wiki map
- Received over 1,200 comments, many in favor of “Road Diet”

2020 – 2021 (Project delayed due to COVID-19 pandemic)







- DCR reduces size of initial project to reduce complexity and provide more feasible project limits
- DCR hires Stantec Consultant Team to provide 100% design of updated Memorial Drive Phase III project

Getting to Today







DCR re-starts Public Outreach Process – 2021 thru 2024

- 2021-2023 – DCR/Project Team/Project Stakeholders Meetings
- February 7, 2022 – **ENF Certificate** issued
- June 30, 2022 – **25% Design Public Meeting**
- January 13, 2023 – **MEPA DEIR Certificate** issued
- June 2, 2023 – **MEPA FEIR Certificate** issued
- January 31, 2024 – **Chapter 91 Meeting** with DEP Waterways & DCR/Project Team
- March 25, 2024 – **Cambridge Conservation Commission Public Hearing**
- July 19, 2024 – **Order of Conditions** Issued by Cambridge Conservation Commission
- August 29, 2024 – **Minor Project Modification Approved** by MassDEP Waterways
- September 16, 2024 – **MWRA 8(m) Permit** issued
- December 12, 2024 – **Design Public Meeting**
- February 28, 2025 – **Chapter 91 Waterways License** Issued by MassDEP Waterways
- April 30, 2025 – **Advertisement Date**
- June 5, 2025 – **Bid Opening**
- July 17, 2025 – **Construction Notice to Proceed** issued to McCourt Construction
- August 21, 2025 – **Site Walk (DCR/Stantec/McCourt)** pending

Summary of Public Feedback

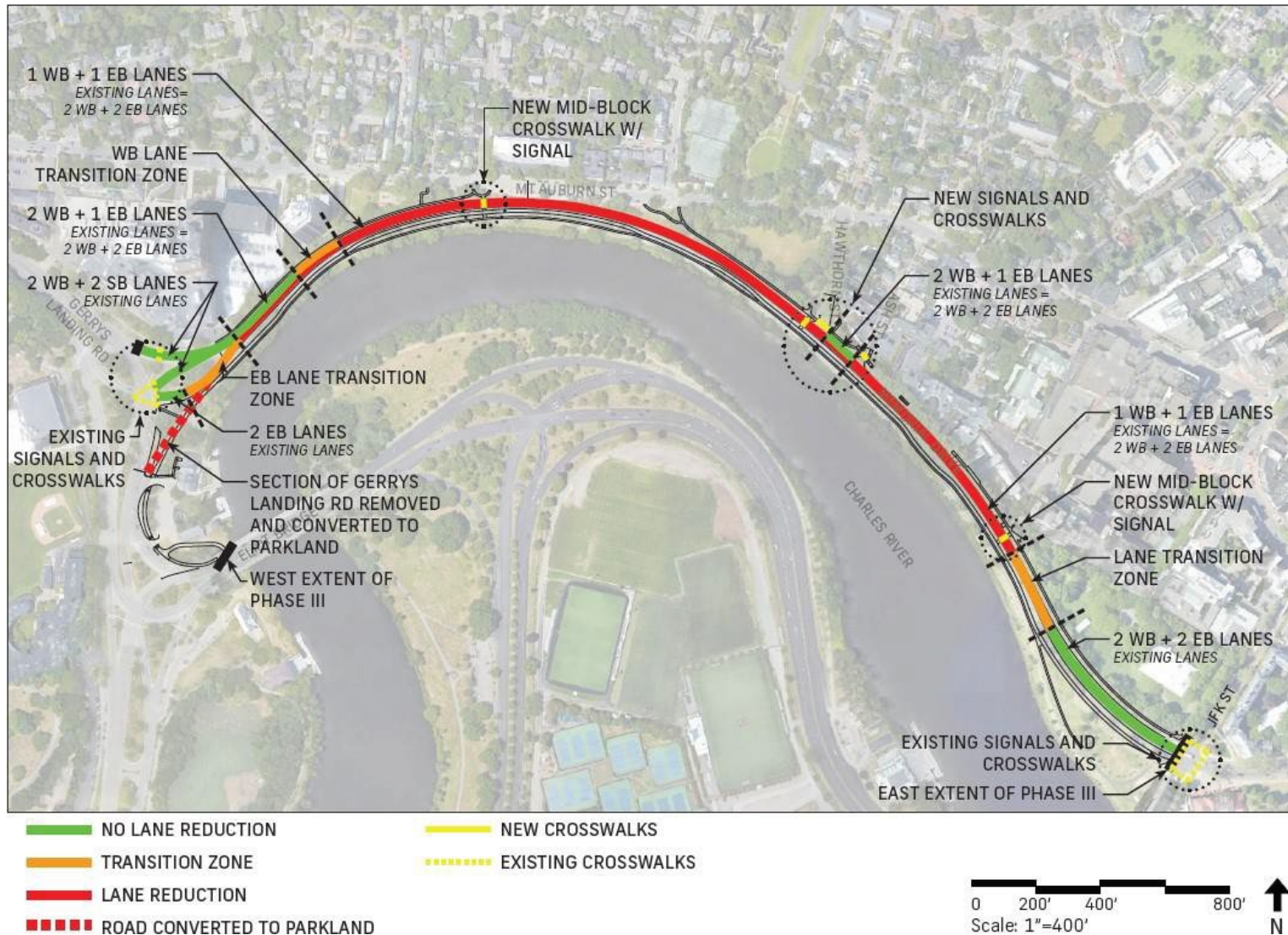
Public Feedback	Resolution
Do not remove London Plane Trees 	Modified pathway designs to preserve additional healthy London Plane Trees. Seven compromised London Plane trees to be removed per agency/stakeholder site walk.
Eliminate or reduce the amount of retaining wall needed. Materials for retaining wall and fencing seem out of character. 	Replaced low height retaining walls with bioengineered coir logs for more sustainable slope stabilization along riverbank.
Reduce construction impact to London Plane Trees on north side of parkway 	Eliminated new curb construction on the north side of Memorial Drive near existing trees and will include specification language requiring mitigation measures for tree protection during construction. Will use construction methodologies for north side walkway replacement that are sensitive to sustainability of existing London Plane trees.
Include new plantings of London Plane Trees 	3 to 1 replacement of London Plane Trees: 24 new London Plane Trees will be planted to complete the culturally important London Plane Tree allée on the eastern end of the Project. Proposed tree health improvements such as air spading will also be included.
Eliminate free-flow right turn from Memorial Drive westbound onto Hawthorn Street 	Hawthorn Street intersection has been re-designed to eliminate free-flow traffic movements and enhance pedestrian safety
The shared-use and stabilized, aggregate paths should be separated to enhance pedestrian safety 	Shared-use path and stabilized, aggregate path have been physically separated by a landscape buffer where possible. Additionally, the stabilized, aggregate path will include signs prohibiting bicycle use.

Summary of Public Feedback

Public Feedback	Resolution
Preserve historic features and minimize impacts to Charles River Basin Historic District 	Cultural/Historic Assessment of the Charles River District's Historic Features has been performed. Current design preserves historic features to maximum extent.
Negatively impacts access to Cambridge Boathouse 	Redesigned access to/from DCR parking lot, created safer trailer loading/unloading area for shells, and provided ADA access to Boathouse building. Met with Cambridge Boat Club staff and a preferred design has been implemented.
Remove Existing Gerrys Landing Road connection to Memorial Drive 	Removed existing Gerrys Landing Road free-flow connection to Memorial Drive eastbound to provide for safer and expanded parkland uses.
Place separated bicycle path within surplus space created by Memorial Drive Road Diet 	<p>West Segment of Project to Hawthorn Street: – Implemented suggestion where space allows excluding new stormwater treatment locations.</p> <p>Hawthorn Street to JFK Street: – surplus space from road diet used to recreate London Plane tree allée with new London Plane tree plantings.</p>
Widen shared-use path to a minimum of 12 feet with a goal of 14 feet 	Shared-use path has been widened to 11 feet to accommodate AASHTO design guidelines. Space constraints prohibit further widening (i.e., trees, riverbank impacts, etc.)
The two mid-block pedestrian crossings should operate as a traffic signal to stop vehicles 	Rectangular Rapid Flashing Beacons (RRFBs) have been re-designed as Pedestrian Hybrid Beacons (i.e., HAWK) signals with red indications to stop vehicles

Lane and Signalized Crosswalk Plan

Lane Reduction

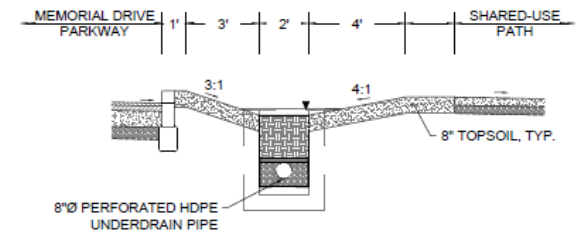
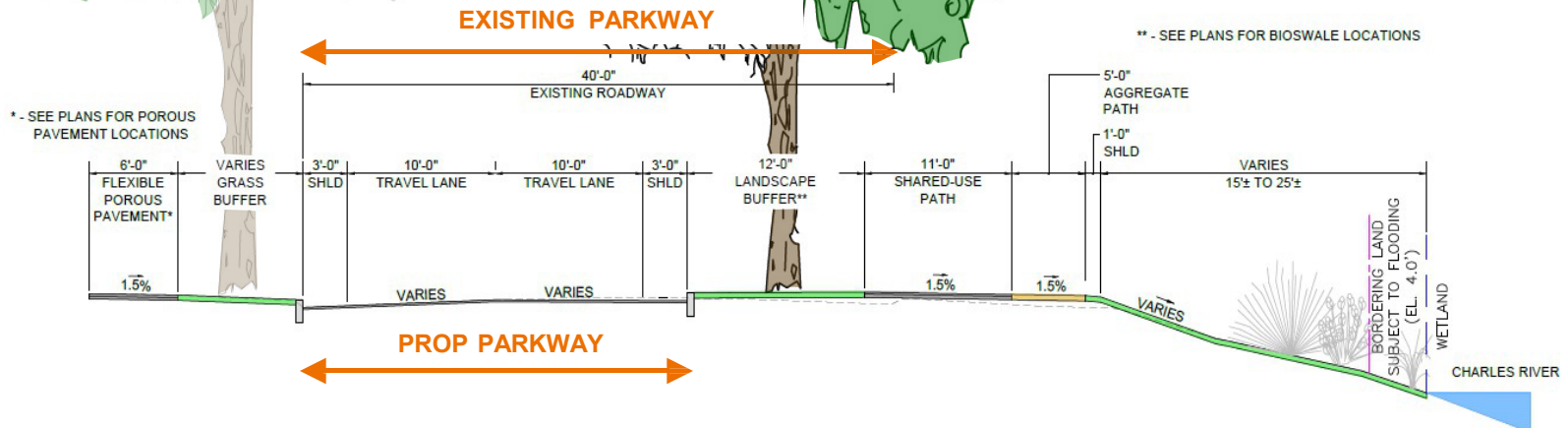


Proposed Cross Section

Lane Reduction East of Hawthorn Street

EXISTING LONDON PLANE TREE

PROPOSED LONDON PLANE TREE

**TYPICAL BIOSWALE DETAIL**

Memorial Drive Phase III

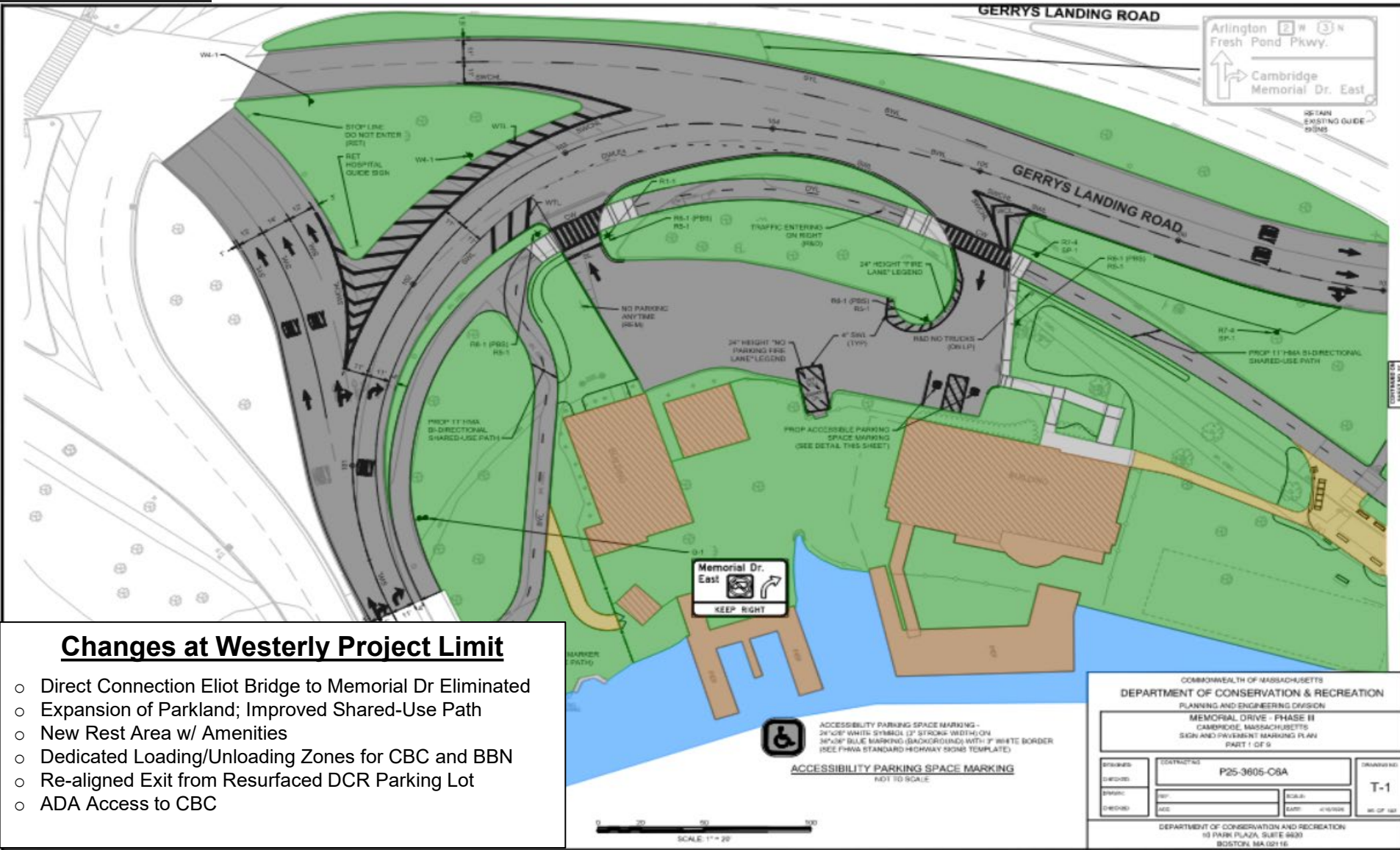
Existing Parkway Condition at Western Limits

Existing Condition



Memorial Drive Phase III

Park Amenities & Safety Improvements at Western Limits

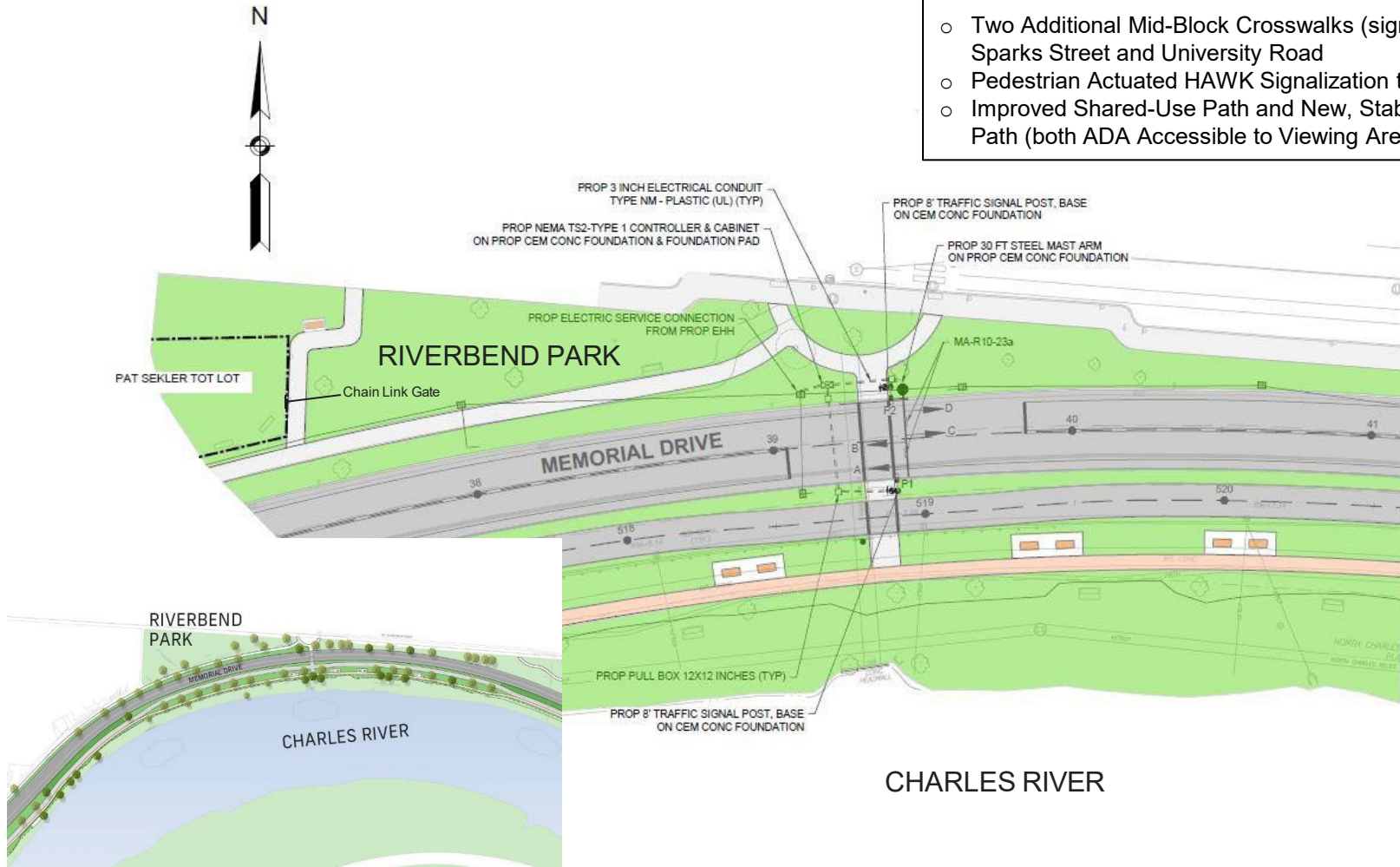


Memorial Drive Phase III

Sparks Street – New HAWK Signal

Access Changes to Riverfront Parkland

- Two Additional Mid-Block Crosswalks (signalized) Opposite Sparks Street and University Road
- Pedestrian Actuated HAWK Signalization to Stop Vehicles
- Improved Shared-Use Path and New, Stabilized Walking Path (both ADA Accessible to Viewing Area w/ Benches)

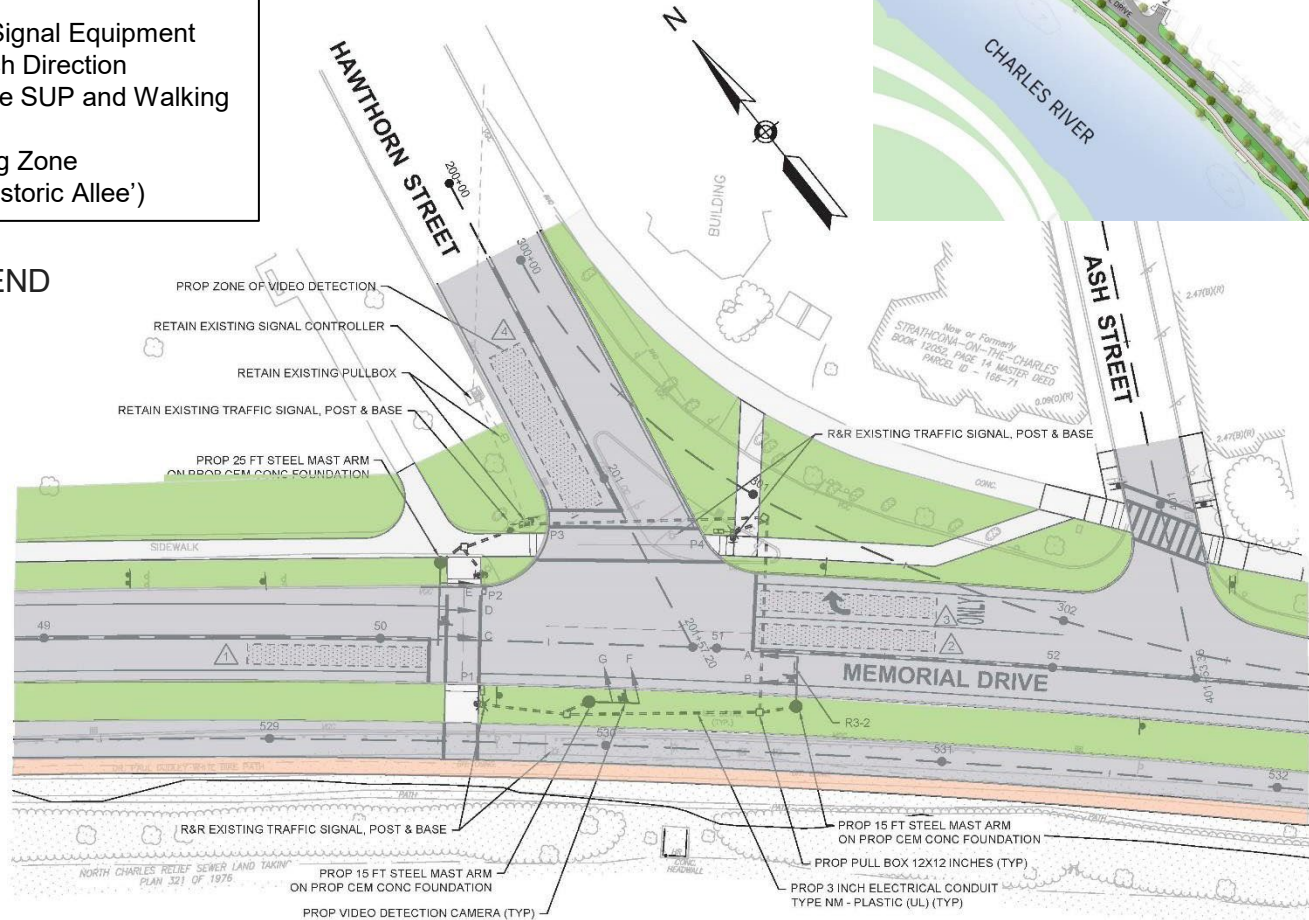


Memorial Drive Phase III

Hawthorn Street Re-Design

Changes at Hawthorn Street

- Improved Configuration Eliminates Free-Flow Right Turn
- New Traffic and Pedestrian Signal Equipment
- One Thru Traffic Lane in Each Direction
- Expanded Parkland; Separate SUP and Walking Path
- Dedicated Short-term Parking Zone
- New London Plane Trees (Historic Allee')



CHARLES RIVER



Landscape Design

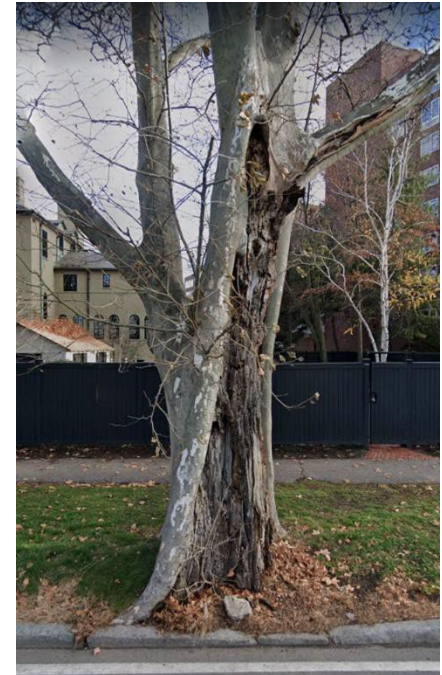
Protect 112 London Plane Trees and Plant 24 New London Plane Trees to Preserve and Expand the Allée.



December 18, 1925 photo by Ernest Henry Wilson Glass negative property of the Arnold Arboretum Horticultural Library of Harvard University: © President and Fellows of Harvard College. Arnold Arboretum Archives

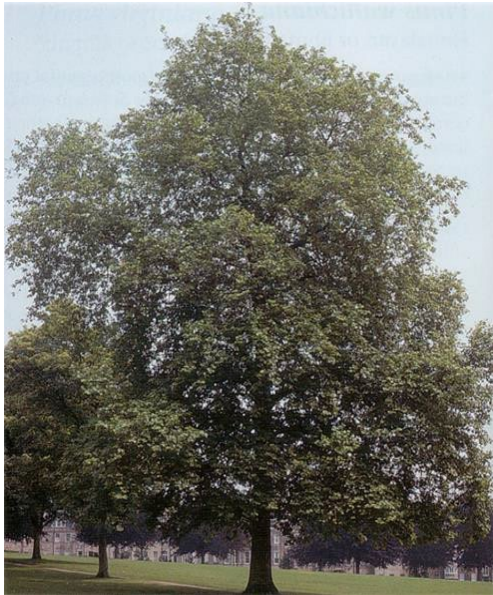
Landscape Design Process and Recommendations

- Conducted Tree Inventory with DCR Arborist and Landscape Architecture Consultant, BRR.
- Photographed each tree and assessed condition.
- **Remove 8 London Plane Trees** over 14" suffering from vehicle strikes, internal decay, and mechanical damage at base as seen on the April 8 site walk with City and community groups.



Planting Palette includes Native Species and London Plane Trees

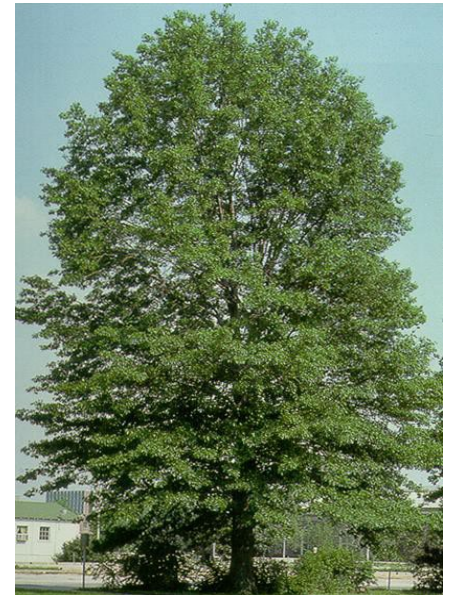
Plant 79 new trees (55 native, 24 LPT's) in accordance with DCR's 2018 Charles Riverbank Vegetation Management Plan, Cambridge Urban Forest Master Plan, and Master Plan for the Charles River Basin. Plant native shrubs and perennials on the riverbank.



London Plane Tree



Sweetgum



Tulip Tree

Proposed Multi-Stemmed Native Species



Witch Hazel



Heritage River Birch



Allegheny Serviceberry

Stormwater Improvements

- Implement improved stormwater treatment through green infrastructure, pavement reduction, BMPs – improving water quality of the Charles River
 - ❖ Bio-retention swales to treat parkway stormwater runoff
 - ❖ 1.16 acre reduction of impervious surface reduces phosphorus entering the Charles River
 - ❖ Approx. 3,000 LF of existing hot mix asphalt sidewalk replaced with porous pavement sidewalk
 - ❖ New stormwater collection system of pipes and deep sump catch basins with hoods
- Stormwater management improvements will reduce phosphorus runoff to the Charles River, a Category 5-Impaired waterway

Permits/Approvals



March 31, 2023

Memorial Drive Phase III Project Final Environmental Impact Report

Submitted to:
Executive Office of Energy and
Environmental Affairs
MEPA Office
100 Cambridge Street - Suite 800
Boston, MA 02114

Prepared for:
Department of Conservation &
Recreation
251 Causeway Street - Suite 900
Boston, MA 02114

Prepared by:
Stantec Consulting Services, Inc.
40 Water Street, 3rd Floor
Boston, MA 02109

with Brown, Richardson + Rowe, Inc.
Landscape Architects and Planners
85 Franklin Street
Boston, MA 02110

COMPLETED

- ENF filed on 12/15/21
- MEPA Certificate Issued 2/7/22
- DEIR filed on 11/30/22
- MEPA Certificate Issued 1/13/23
- FEIR filed 3/31/23
- MEPA Certificate Issued 6/2/23
- Wetlands Protection Act – Order Of Conditions
Issued - 7/19/24; Recorded – 10/20/24
- MWRA 8(M) Permit From MWRA
Issued – 9/16/24
- Chapter 91 Minor Modification (overall project)
Issued – 8/29/24
- Chapter 91 License (proposed viewing/resting
wood deck) per Massachusetts Waterways
Program Recorded – 2/28/2025

Memorial Drive Phase III

Construction Trailer Location

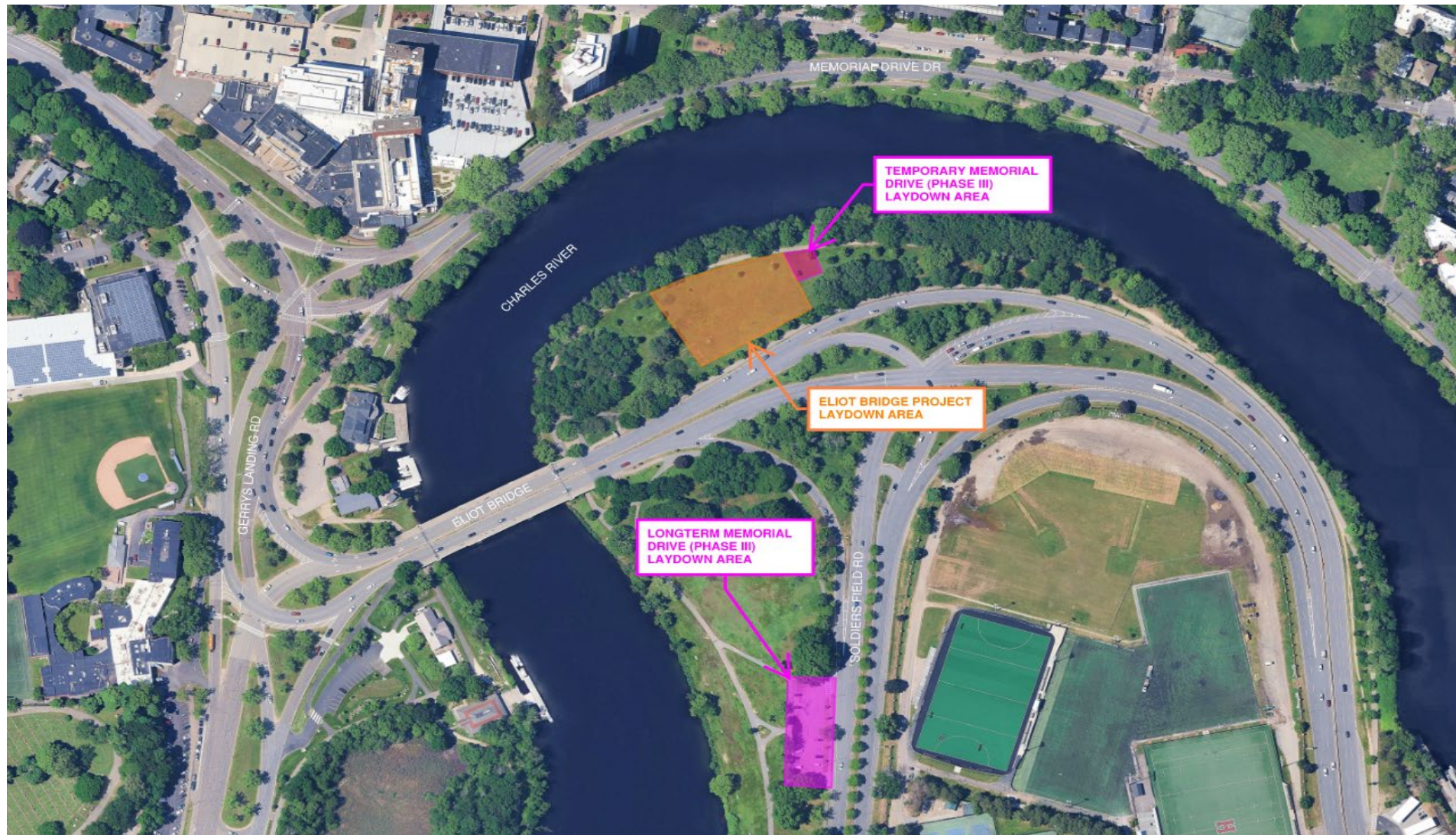


- DCR and McCourt to initially share a construction trailer until after the Head of the Charles (10' x 50' Trailer Size)
- Trailer placement maintains access to Paul Dudley White Bike Path and Eliot Bridge underpass
- 10' access gate on riverside of BB&N Boat House to be maintained
- Trailer location approved by Cambridge Conservation Commission

- LIMITS OF CONSTRUCTION TRAILER

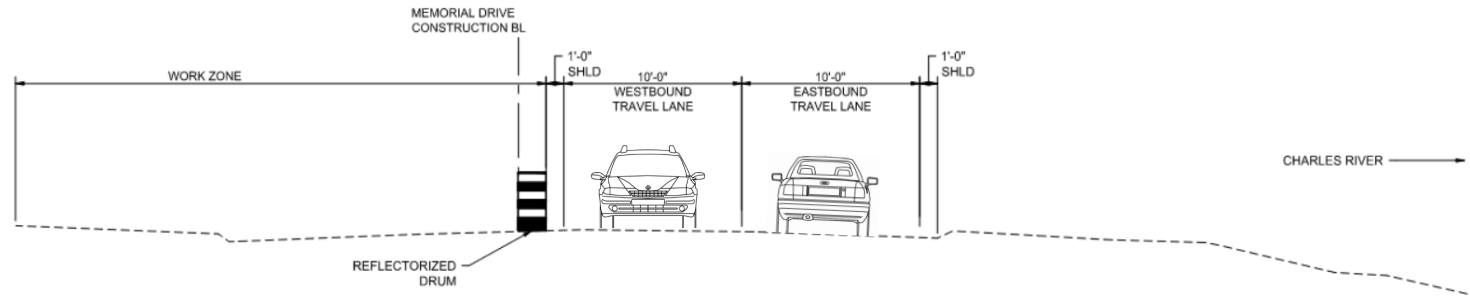
Memorial Drive Phase III

Laydown Area Locations



Memorial Drive Phase III

Suggested Construction Stage 1



STAGE 1 PARKWAY CONFIGURATION

STAGE 1 NOTES:

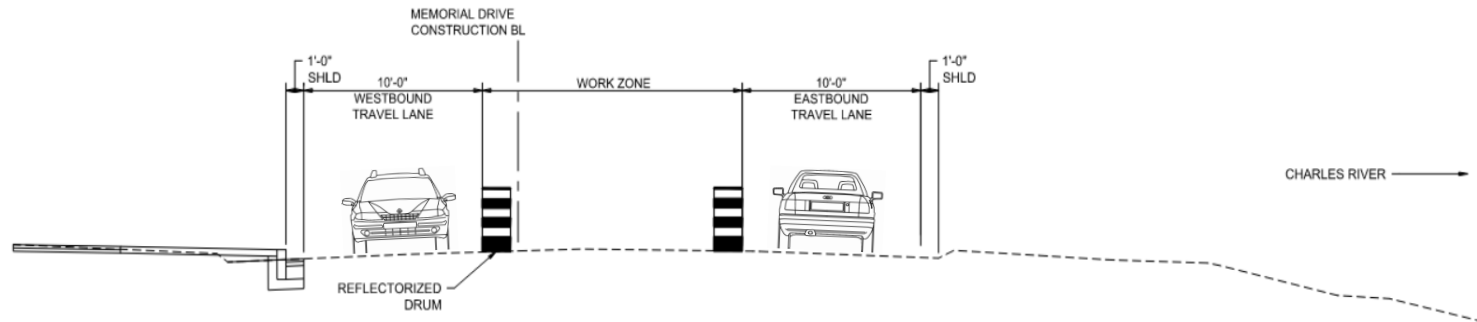
1. THE OVERAL WORK ZONE IN THIS STAGE SHALL EXTEND THE LIMITS OF THE LANE REDUCTION ON THE NORTH SIDE OF MEMORIAL DRIVE.
2. PRIOR TO THE IMPLEMENTATION OF THE OVERALL WORK ZONE IN THIS PHASE, THE CONTRACTOR SHALL SEPARATELY STAGE THE WORK AT THE NORTH SIDE OF THE MEMORIAL DRIVE INTERSECTION AT HAWTHORN STREET USING STANDARD MUTCD TEMPORARY TRAFFIC CONTROL SETUPS. THE MEDIAN ISLAND ON HAWTHORN STREET SHALL BE REMOVED TO FACILITATE FUTURE CONTINUED ACCESS TO HAWTHORN STREET DURING THIS PHASE. PEDESTRIAN CROSSWALKS AND ACCESSIBLE WALKWAYS SHALL BE PROVIDED AND PEDESTRIAN SIGNAL CONTROL SHALL BE MAINTAINED.
3. THE CONTRACTOR SHALL CONSTRUCT THE NORTHERN SIDE OF THE PARKWAY AND SIDEWALKS. ACCESS TO ALL INTERSECTING STREETS, DRIVEWAYS, RESIDENCES, AND BUSINESSES SHALL BE MAINTAINED AT ALL TIMES.
4. THE CONTRACTOR SHALL PERFORM OR COORDINATE FOR FUTURE UTILITY RELOCATIONS AND DRAINAGE WORK ON THE NORTHERN SIDE OF MEMORIAL DRIVE. THE CONTRACTOR SHALL COORDINATE WORK WITH ONGOING DEMOLITION OF 221 MT. AUBURN STREET BEING PERFORMED BY CONSIGLI CONSTRUCTION COMPANY
5. THE CONTRACTOR SHALL CONSTRUCT UNDERGROUND PORTIONS OF TRAFFIC CONTROL SIGNALS ON THE NORTHERN SIDE OF MEMORIAL DRIVE.
6. THE WORK SHOULD BE STAGED SUCH THAT A CONTINUOUS ACCESSIBLE PEDESTRIAN ROUTE IS MAINTAINED ALONG THE NORTH SIDE OF MEMORIAL DRIVE, WHILE MAINTAINING ACCESS TO ABUTTING PROPERTIES.

GENERAL NOTES:

1. GENERALLY, WORK ON THIS PROJECT IS TO BE DONE USING ONE (1) 8-HOUR SHIFT PER DAY, 5 DAYS A WEEK (MON-FRI), BETWEEN THE HOURS OF 7:00 AM AND 3:30 PM, WITH THE PRIME CONTRACTOR AND ALL SUBCONTRACTORS WORKING ON THE SAME SHIFT. SET-UP AND REMOVAL OF ALL EQUIPMENT AND MATERIALS FOR CONSTRUCTION AND/OR TRAFFIC MAINTENANCE SHALL BE DONE ONLY DURING WORKING HOURS FOR THE PARTICULAR WORK BEING DONE. THE ROADWAY SHALL BE FREE OF THE CONTRACTOR'S PERSONNEL AND OPERATIONS DURING NON-WORK HOURS. WORK HOURS TO BE CONFIRMED BY DCR.

Memorial Drive Phase III

Suggested Construction Stage 2



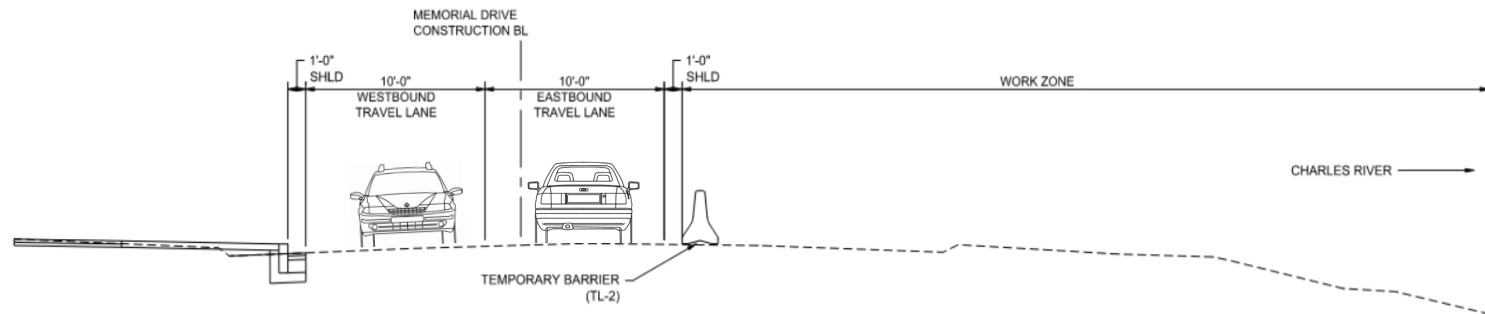
STAGE 2 PARKWAY CONFIGURATION

STAGE 2 NOTES:

1. THE OVERAL WORK ZONE IN THIS STAGE SHALL EXTEND THE LIMITS OF THE LANE REDUCTION IN THE MIDDLE OF MEMORIAL DRIVE.
2. THE CONTRACTOR SHALL CONSTRUCT THE MIDDLE OF THE ROADWAY. ACCESS TO ALL INTERSECTING STREETS, DRIVEWAYS, RESIDENCES, AND BUSINESSES SHALL BE MAINTAINED AT ALL TIMES.
3. THE CONTRACTOR SHALL PERFORM OR COORDINATE FOR UTILITY RELOCATIONS AND DRAINAGE WORK IN THE MIDDLE OF MEMORIAL DRIVE

Memorial Drive Phase III

Suggested Construction Stage 3



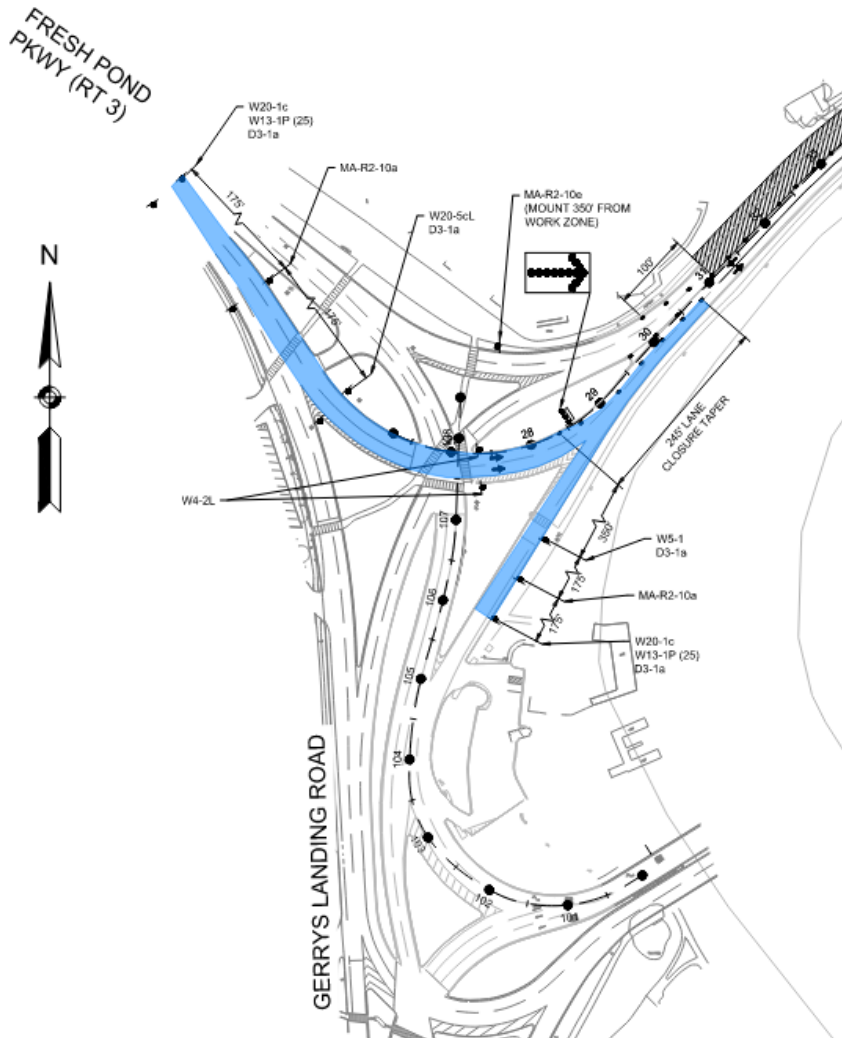
STAGE 3 PARKWAY CONFIGURATION

STAGE 3 NOTES:

1. THE OVERAL WORK ZONE IN THIS STAGE SHALL EXTEND THE LIMITS OF THE LANE REDUCTION ON THE SOUTH SIDE OF MEMORIAL DRIVE.
2. THE CONTRACTOR SHALL CONSTRUCT THE SOUTHERN SIDE OF THE ROADWAY AND PATHS. ACCESS TO ALL INTERSECTING STREETS, DRIVEWAYS, RESIDENCES, AND BUSINESSES SHALL BE MAINTAINED AT ALL TIMES.
3. THE CONTRACTOR SHALL PERFORM OR COORDINATE FOR UTILITY RELOCATIONS AND DRAINAGE WORK ON THE SOUTHERN SIDE OF MEMORIAL DRIVE.
4. THE CONTRACTOR SHALL CONSTRUCT UNDERGROUND PORTIONS OF TRAFFIC CONTROL SIGNALS ON THE SOUTHERN SIDE OF MEMORIAL DRIVE.
5. WORK HOURS TO BE CONFIRMED BY DCR.
6. PEDESTRIANS WILL BE DETOURED TO THE NORTHERN SIDEWALK DURING CONSTRUCTION. BICYCLISTS AND PEDESTRIANS WILL BE DETOURED TO THE PAUL DUDLEY WHITE TRAIL ON THE SOUTH SIDE OF THE CHARLES RIVER DURING CONSTRUCTION . THE CONTRACTOR SHALL COORDINATE ALL WORK WITH MASSDOT'S ELIOT BRIDGE PRESERVATION PROJECT AS APPLICABLE.

Memorial Drive Phase III

Western Limit Traffic Management



TRAFFIC MANAGEMENT NOTES

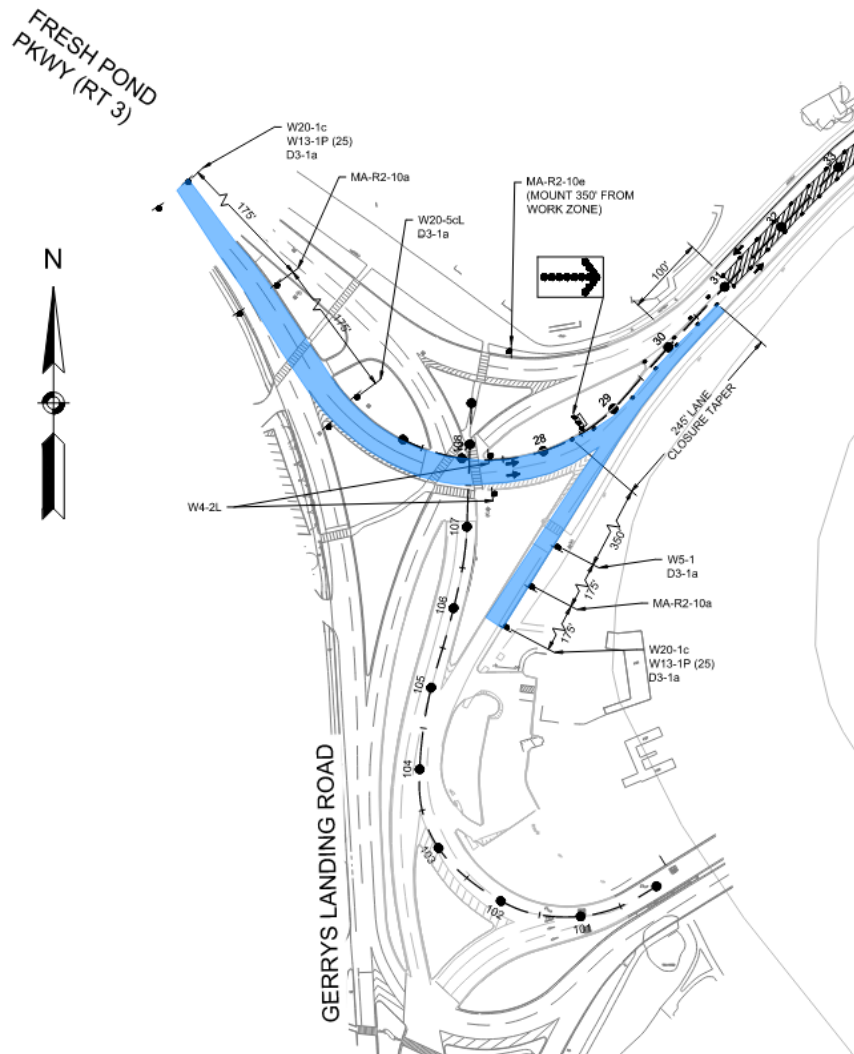
- CONTRACTOR TO INSTALL ALL SIGNS AND TRAFFIC MANAGEMENT DEVICES FOR STAGE 1 EASTBOUND TRANSITION ZONES AND LANE TAPERS ALONG FRESH POND PARKWAY AND GERRYS LANDING ROAD
- CONTRACTOR TO COORDINATE TRAFFIC MANAGEMENT PLAN WITH OTHER ONGOING CONSTRUCTION WORK BY OTHERS INCLUDING BUT NOT LIMITED TO CONSIGLI CONSTRUCTION COMPANY FOR DEMOLITION OF 221 MT. AUBURN STREET AND MASSDOT FOR THE ELIOT BRIDGE PRESERVATION PROJECT

 - LIMITS OF TRAFFIC MANAGEMENT TRANSITION ZONE AND LANE TAPERS

STAGE 1 TRAFFIC MANAGEMENT CONFIGURATION

Memorial Drive Phase III

Western Limit Traffic Management



TRAFFIC MANAGEMENT NOTES

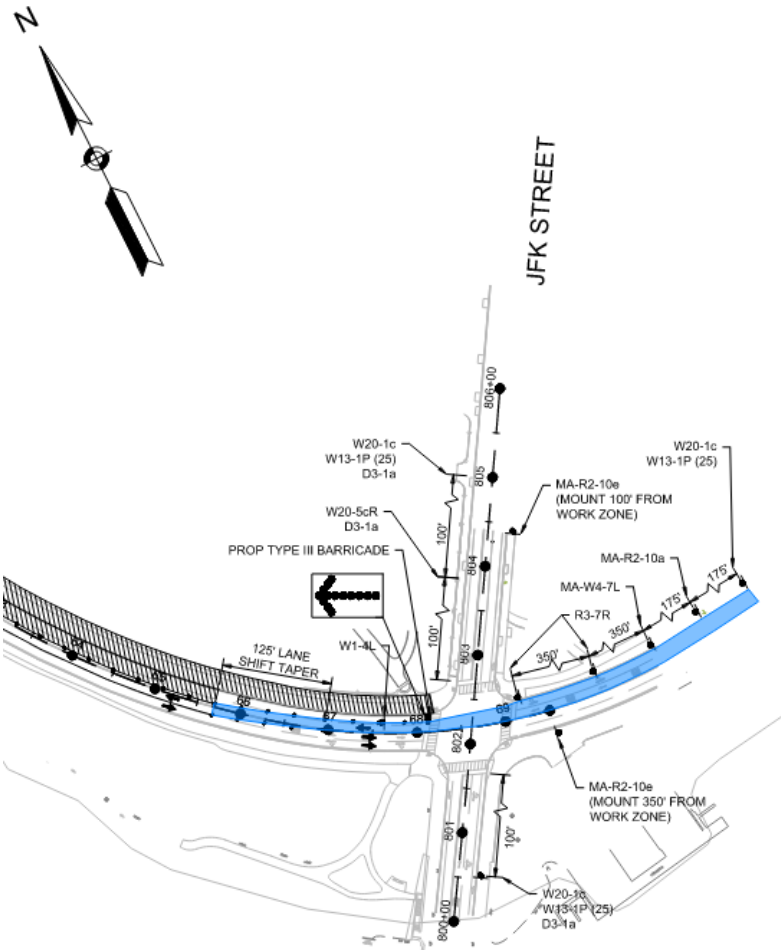
- SETUP OF TRAFFIC MANAGEMENT PLAN FOR STAGE 2 IS SIMILAR TO STAGE 1
- CONTRACTOR TO INSTALL ALL SIGNS AND TRAFFIC MANAGEMENT DEVICES FOR STAGE 2 EASTBOUND TRANSITION ZONES AND LANE TAPERS ALONG FRESH POND PARKWAY AND GERRYS LANDING ROAD
- CONTRACTOR TO COORDINATE TRAFFIC MANAGEMENT PLAN WITH OTHER ONGOING CONSTRUCTION WORK BY OTHERS INCLUDING BUT NOT LIMITED TO CONSIGLI CONSTRUCTION COMPANY FOR DEMOLITION OF 221 MT. AUBURN STREET AND MASSDOT FOR THE ELIOT BRIDGE PRESERVATION PROJECT

 - LIMITS OF TRAFFIC MANAGEMENT TRANSITION ZONE AND LANE TAPERS

STAGE 2 TRAFFIC MANAGEMENT CONFIGURATION

Memorial Drive Phase III

Eastern Limit Traffic Management



TRAFFIC MANAGEMENT NOTES

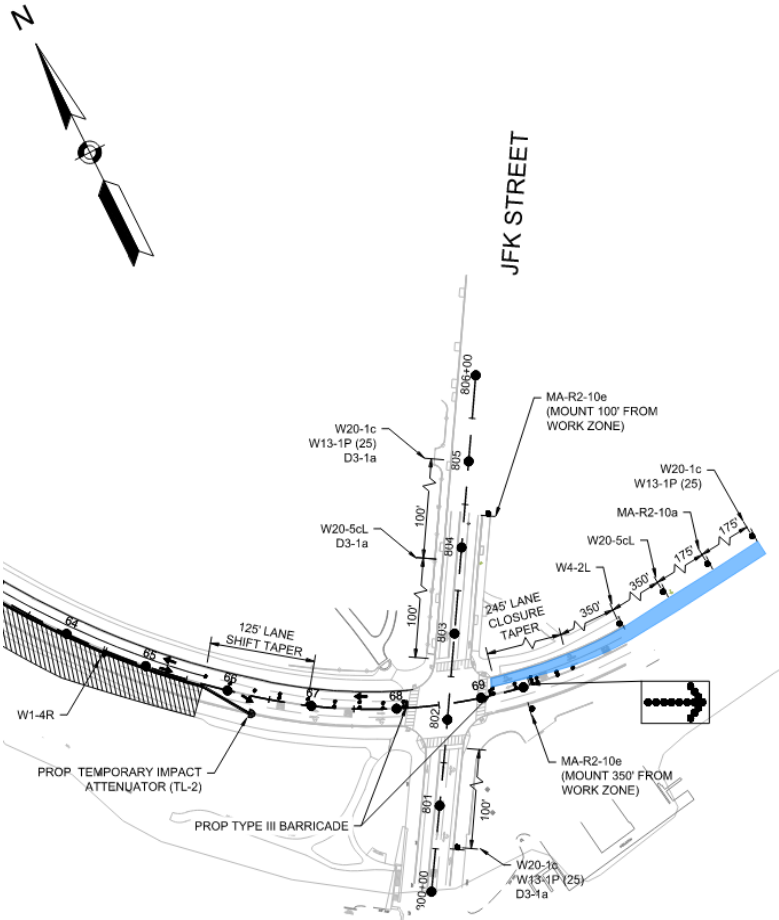
- CONTRACTOR TO INSTALL ALL SIGNS AND TRAFFIC MANAGEMENT DEVICES FOR STAGE 1 WESTBOUND TRANSITION ZONE AND LANE TAPER ALONG MEMORIAL DRIVE APPROACH TO AND DEPARTURE FROM TRAFFIC SIGNAL AT JFK STREET
- CONTRACTOR TO COORDINATE ALL WORK WITH ADJACENT ONGOING CONSTRUCTION BY OTHERS, AS APPLICABLE
- RIGHT TRAVEL LANE ON MEMORIAL DRIVE WESTBOUND APPROACH TO JFK STREET MUST TURN RIGHT

 - LIMITS OF TRAFFIC MANAGEMENT TRANSITION ZONE AND LANE TAPER

STAGE 1 TRAFFIC MANAGEMENT CONFIGURATION

Memorial Drive Phase III

Eastern Limit Traffic Management



TRAFFIC MANAGEMENT NOTES

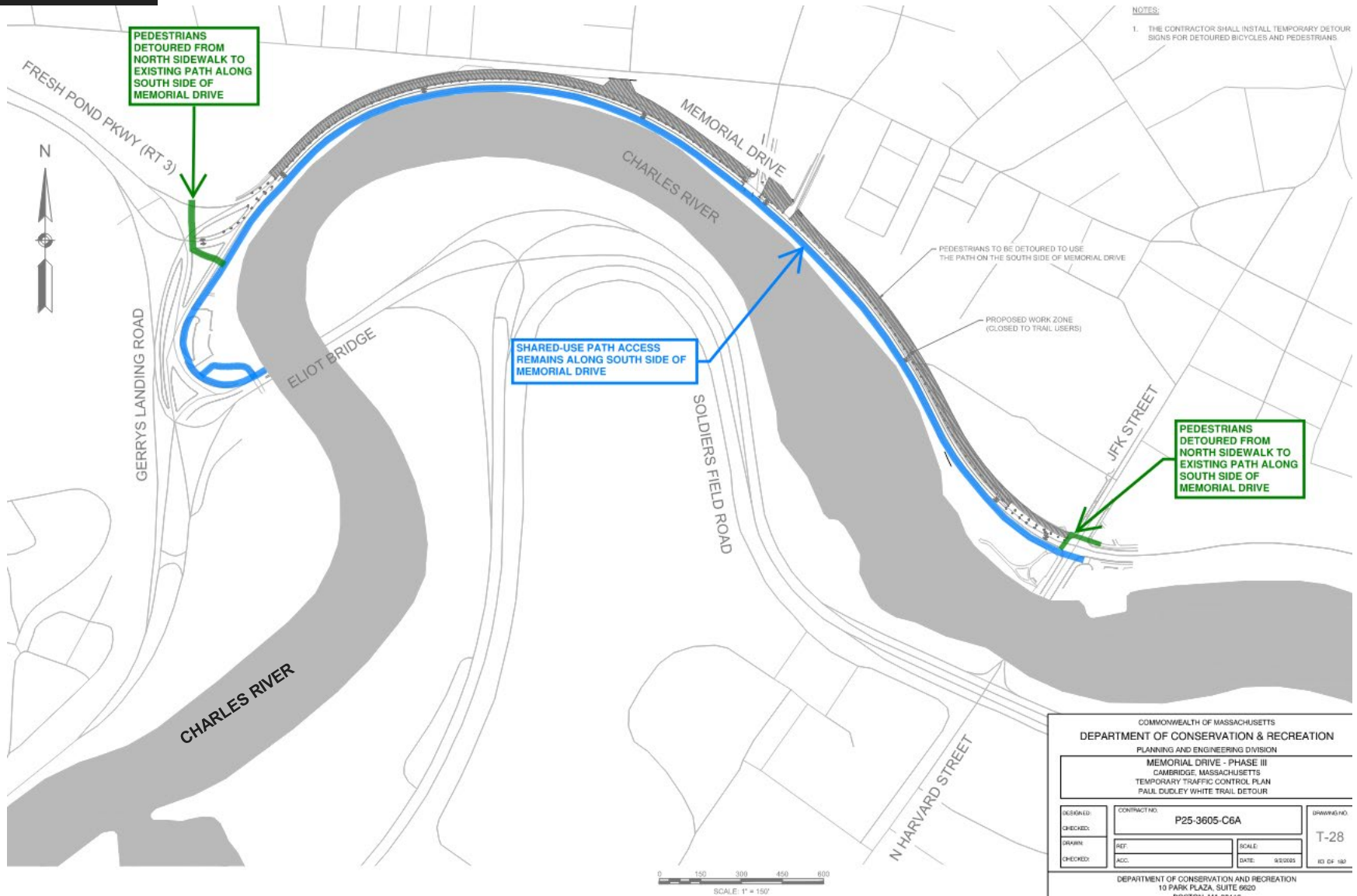
- CONTRACTOR TO INSTALL ALL SIGNS AND TRAFFIC MANAGEMENT DEVICES FOR STAGE 3 WESTBOUND TRANSITION ZONE AND LANE TAPER ALONG MEMORIAL DRIVE APPROACH TO TRAFFIC SIGNAL AT JFK STREET
- EASTBOUND MEMORIAL DRIVE TRAFFIC TO TRANSITION FROM ONE TO TWO TRAVEL LANES ON APPROACH TO JFK STREET
- CONTRACTOR TO COORDINATE ALL WORK WITH ADJACENT ONGOING CONSTRUCTION BY OTHERS, AS APPLICABLE

 - LIMITS OF TRAFFIC MANAGEMENT TRANSITION ZONE AND LANE TAPER

STAGE 3 TRAFFIC MANAGEMENT CONFIGURATION

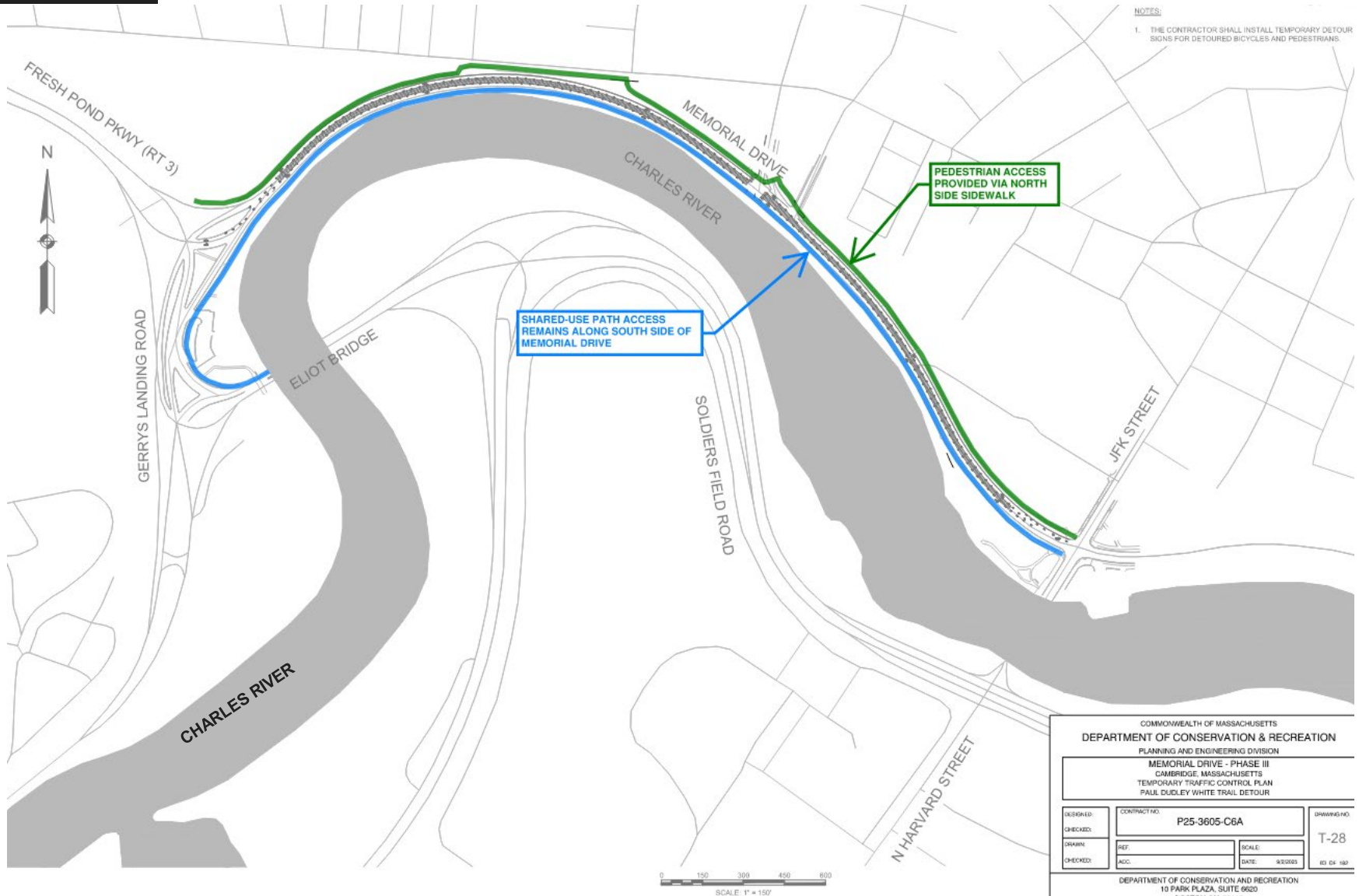
Memorial Drive Phase III

Pedestrian and Bicyclist Detours (Stage 1)



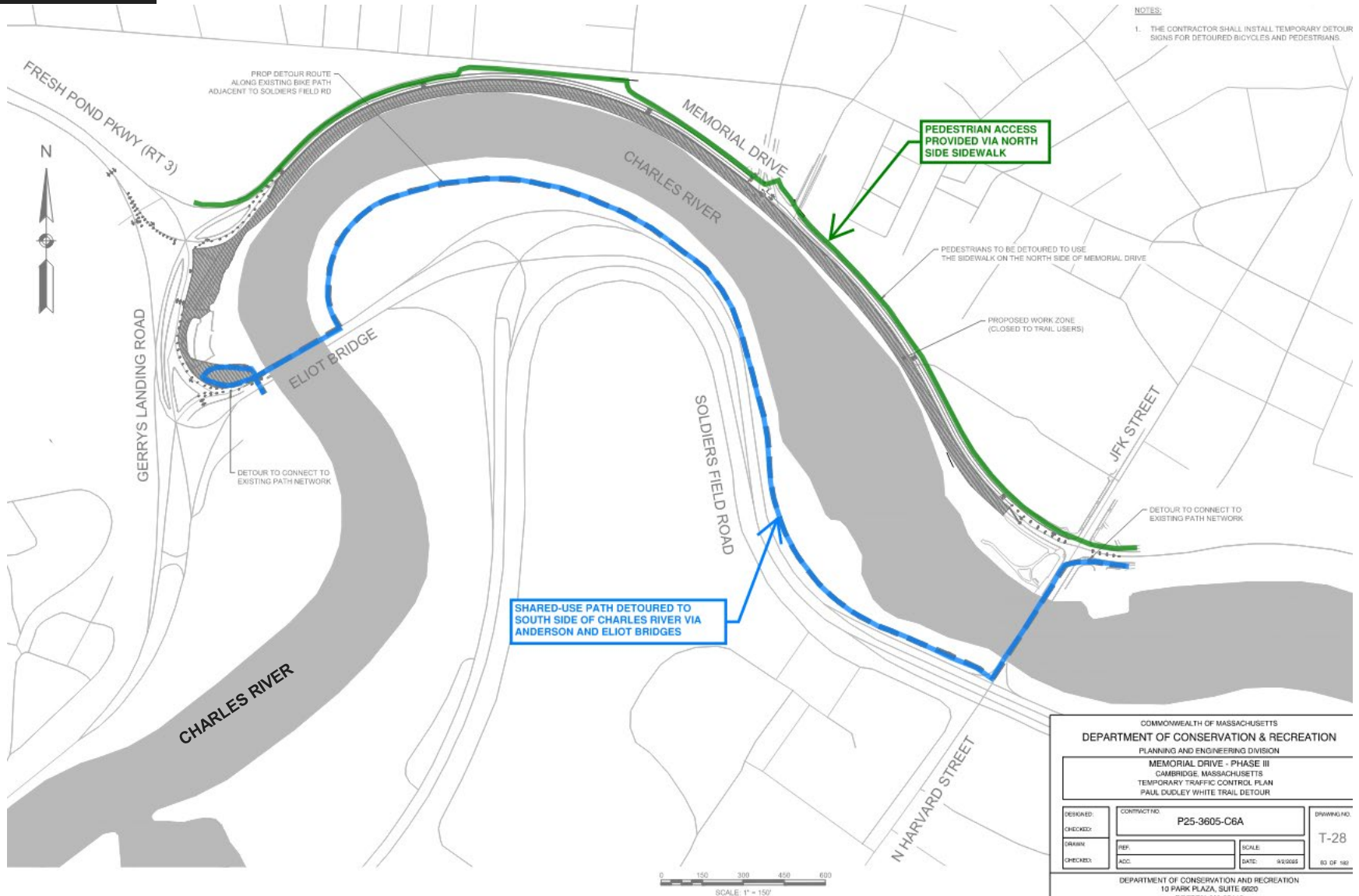
Memorial Drive Phase III

Pedestrian and Bicyclist Detours (Stage 2)



Memorial Drive Phase III

Pedestrian and Bicyclist Detours (Stage 3)



Project Schedule

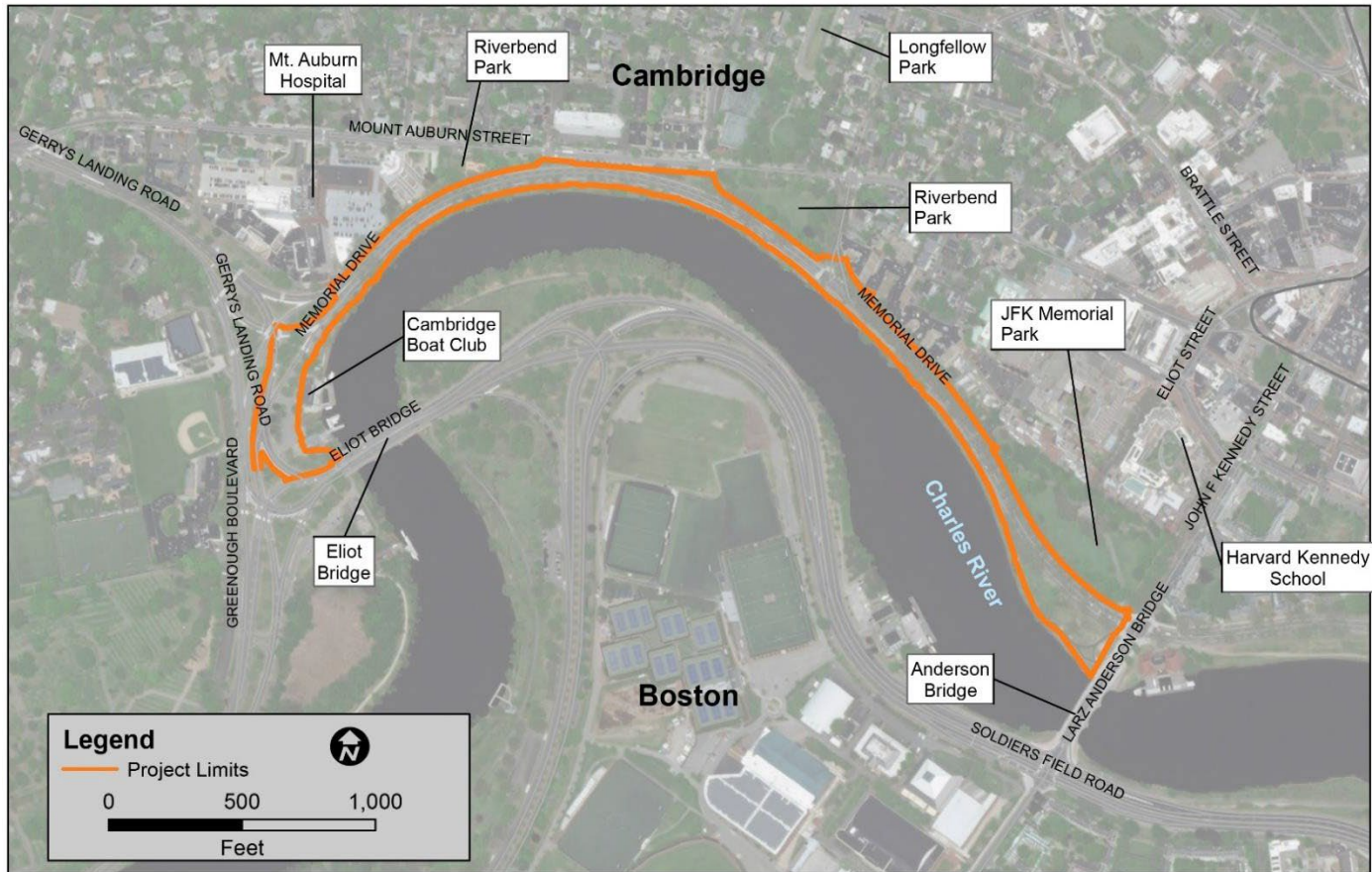
December 12, 2024
Public Meeting – 90% Design

Late December 2024
100% / PS&E Design Complete

Spring 2025
Advertisement and Bidding

Summer - Fall 2025
Construction Begins

QUESTIONS



Map Source: Office of Geographic and Environmental Information (MassGIS), Commonwealth of Massachusetts Executive Office of Energy and Environmental Affairs and ArcGIS Online.

Project Location

DCR Cambridge - Memorial Drive Reconstruction
Project Limits - Eliot Bridge to Anderson Bridge
Cambridge, Massachusetts

Additional Information

- Recording and tonight's slide deck will be available at:
 - www.mass.gov/dcr/past-public-meetings
- If you have comments on this project:
 - *Submit online:* www.mass.gov/dcr/public-comment
 - *Deadline: Tuesday, September 23rd, 2025*

Please note: the contents of comments submitted to DCR, including your name, town and zip code, will be posted on DCR's website. Additional contact information provided, notably email address, will only be used for outreach on future updates to the subject project or property.

- If you wish to subscribe to a DCR general information or project-related listserv: contact DCR's Office of Community Relations via email at mass.parks@mass.gov