

Environmental Justice Screening Form

Project Name	Durante Site Remediation and Wetland Restoration Project
Anticipated Date of MEPA Filing	July 2025
Proponent Name	Massachusetts Bay Transportation Authority (MBTA)
Contact Information (e.g., consultant)	Isabel Mohammadi-Hall, TRC Companies, Inc 650 Suffolk St Suite 200 Lowell, MA 01854
Public website for project or other physical location where project materials can be obtained (if available)	https://www.mbta.com/projects/durante-remediation-and-wetland-enhancement
Municipality and Zip Code for Project (if known)	Weymouth (02189)
Project Type* (list all that apply)	Remediation and Wetland Enhancement
Is the project site within a mapped 100-year FEMA flood plain? Y/N/unknown	Yes
Estimated GHG emissions of conditioned spaces (click here for GHG Estimation tool)	Not applicable – No buildings are proposed as part of this project.

Project Description

1. Provide a brief project description, including overall size of the project site and square footage of proposed buildings and structures if known.

The MBTA is proposing to conduct site remediation and wetland restoration at 0 Wharf Street in Weymouth, Massachusetts (the Project; the Project Site). The Project Site is located at the north end of North Wharf Street and is approximately 6.17 acres in size. The Project Site is vacant, and no utilities currently service the Site. Additionally, there are currently no buildings located on the Project Site. Refer to **Attachment A, Figure 1** for a Site Location Map.

The Project will include Site cleanup activities (e.g. soil reuse and offsite disposal, and installation of an exposure barrier for residual contamination remaining in-place) and restoration of the wetland. The goal of the wetland restoration effort is to optimize the function of the wetland areas by removing invasive species and performing selective excavation/dredging to optimize surface water infiltration and connection between the open water areas and the river. By nature of the abatement, soil and sediment will be excavated to help achieve the remedy chosen. There are no buildings or structures are proposed for this Project. After the Project is completed, the Project Site will be turned over to the City of Weymouth.

2. List anticipated MEPA review thresholds (301 CMR 11.03) (if known)

The Project is anticipated to trigger the following MEPA thresholds:

ENF and Other MEPA Review:

- Wetlands, Waterways, and Tidelands (301 CMR 11.03(3)(b)(c – f)
 - Alteration of 1,000 or more sf of salt marsh or outstanding resource waters;
 - New fill or structure or Expansion of existing fill or structure, except a pile-supported structure, in a velocity zone or regulatory floodway;
 - Alteration of ½ or more acres of any other wetlands
- Areas of Critical Environmental Concern (301 CMR 11.03(11)(b)
 - Any Project of ½ or more acres within designated ACEC

The project also requires an Environmental Impact Report due to the provisions found in 301 CMR 11.06(7)(b), which states that “The Secretary shall require an EIR for any Project that is located within a Designated Geographic Area around an Environmental Justice Population”.

3. List all anticipated state, local and federal permits needed for the project (if known)

Agency	Permit, Review, or Approval
<u>Federal</u>	
United States Army Corps of Engineers (USACE)	Section 404 Pre-Construction Notification (PCN) Permit which includes consultations under Section 106 of National Historic Preservation Act and Section 7 of the Endangered Species Act
United States Environmental Protection Agency (USEPA)	National Pollutant Discharge Elimination System (NPDES) Construction General Permit (CGP), Dewatering and Remediation General Permit (DRGP) and Stormwater Pollution Prevention Plan (SWPPP)
<u>State</u>	
Executive Office of Energy and Environmental Affairs (EOEEA)	MEPA Review/Certificate of the Secretary
Massachusetts Department of Environmental Protection (MassDEP)	Section 401 Individual Water Quality Certification Chapter 91 Minor Modification Request
Massachusetts Office of Coastal Zone Management	Federal Consistency Review
<u>Local</u>	
Weymouth Conservation Commission	Order of Conditions per the Massachusetts Wetlands Protection Act

4. Identify EJ populations and characteristics (Minority, Income, English Isolation) within 5 miles of project site (can attach map identifying 5-mile radius from [EJ Maps Viewer](#) in lieu of narrative)

See **Attachment A, Figure 2.**

5. Identify any municipality or census tract meeting the definition of “vulnerable health EJ criteria” in the [DPH EJ Tool](#) located in whole or in part within a 1 mile radius of the project site

See **Attachment B.**

6. Identify potential short-term and long-term environmental and public health impacts that may affect EJ Populations and any anticipated mitigation

The EJ Populations within 1-mile radius of the Project (the Designated Geographic Area for the Project) is shown in **Attachment C.**

Potential environmental and public health impacts of the Project and anticipated mitigation include the following:

Water Quality:

The Site is located in an urban area. There are wetland and surface water areas on or near the Site and there is ecological habitat on or in the Site vicinity. The Site itself is largely a vacant lot with access to the Weymouth Back River. The Site soil is contaminated polychlorinated biphenyls (PCBs), metals, polycyclic aromatic hydrocarbons (PAHs) and extractable petroleum hydrocarbons (EPH), all of which are believed to be associated with historic operations, historical filling at the Disposal Site, and the demolition of buildings and support structures at the Disposal Site. Remedy implementation measures which will be utilized to minimize potential impacts include erosion and sediment controls, dust suppression during soil excavation and movement activities, decontamination of equipment and vehicles leaving the Site, and the installation of an exposure barrier to prevent direct contact with impacted soil left on-site.

Groundwater and surface water samples have been collected at the Site and nothing was above reportable concentrations.

The Project will incorporate protective and preventative measures to minimize and avoid impacts to water quality. Excavation, dewatering, and dredging associated with the Project will be for site wetland optimization and remediation. Impacts to water quality as a result of this Project will be negligible and temporary and are not anticipated to cause impacts to public health. The Project, after the work is complete, will provide a place where the surrounding communities can have clean access to the natural resources on Site.

Land Protection and Open Space:

The Project Site is not considered protected land or open space under Article 97 and is a vacant lot. The remediation and wetland restoration effort will improve the Project Site by making it more readily available to the public and providing recreational opportunities for the surrounding communities.

Noise:

Noise impacts for the surrounding EJ Populations associated with construction-period activities are temporary in nature and will cease after the work is complete. Noise-generating activities will be conducted in accordance with any local and state requirements and are not anticipated to cause impacts to public health.

Traffic:

Impacts to traffic during the construction of the Project will be minor and intermittent. Access to the Project Site will be through Commercial Street onto North Warf Street. Once on Site, vehicle traffic will be limited to within the Site boundaries. Any contaminants leaving the Site will follow required transportation regulations to avoid impacts to EJ Populations during cleanup activities. There will be no permanent impacts to traffic patterns or use of existing roadways within EJ Populations. Therefore, no impacts to public health to EJ Populations are anticipated from traffic

7. Identify project benefits, including “Environmental Benefits” as defined in 301 CMR 11.02, that may improve environmental conditions or public health of the EJ population

In 301 CMR 11.02, Environmental Benefits are defined as the following: *“Access to clean natural resources, including air, water resources, open space, constructed playgrounds and other outdoor recreational facilities and venues, clean renewable energy sources, environmental enforcement, training and funding disbursed or administered by the executive office of energy and environmental affairs.”*

Potential “Environmental Benefits” include the following:

- The Site cleanup activities (e.g. soil reuse and offsite disposal, and installation of an exposure barrier to residual contamination remaining in-place) will provide public access to clean natural resources and open space.
- The wetland restoration efforts have been designed to optimize the wetland so that the wetland functions better than before the Project.
- The Project also involves the removal of invasive plant species to the extent practicable which would decrease the novel introduction of these species throughout the Site.
- The Project will provide a new open space area for outdoor recreational facilities and new access to water resources. Once the work is done, it is up to the City of Weymouth to decide what additional work will be done at the Site to increase recreation and public use.

Other benefits of this Project that are not expressly included under the definition of “Environmental Benefits” consist of the following:

- Once the Project is complete, the Site will be closed with an Activity Use Limitation (AUL) that will define the allowed activities and development at the Site. This will ensure that the Site is maintained properly.

8. Describe how the community can request a meeting to discuss the project, and how the community can request oral language interpretation services at the meeting. Specify how to request other accommodations, including meetings after business hours and at locations near public transportation.

Communities and members of the public can access information related to the Project in the following ways:

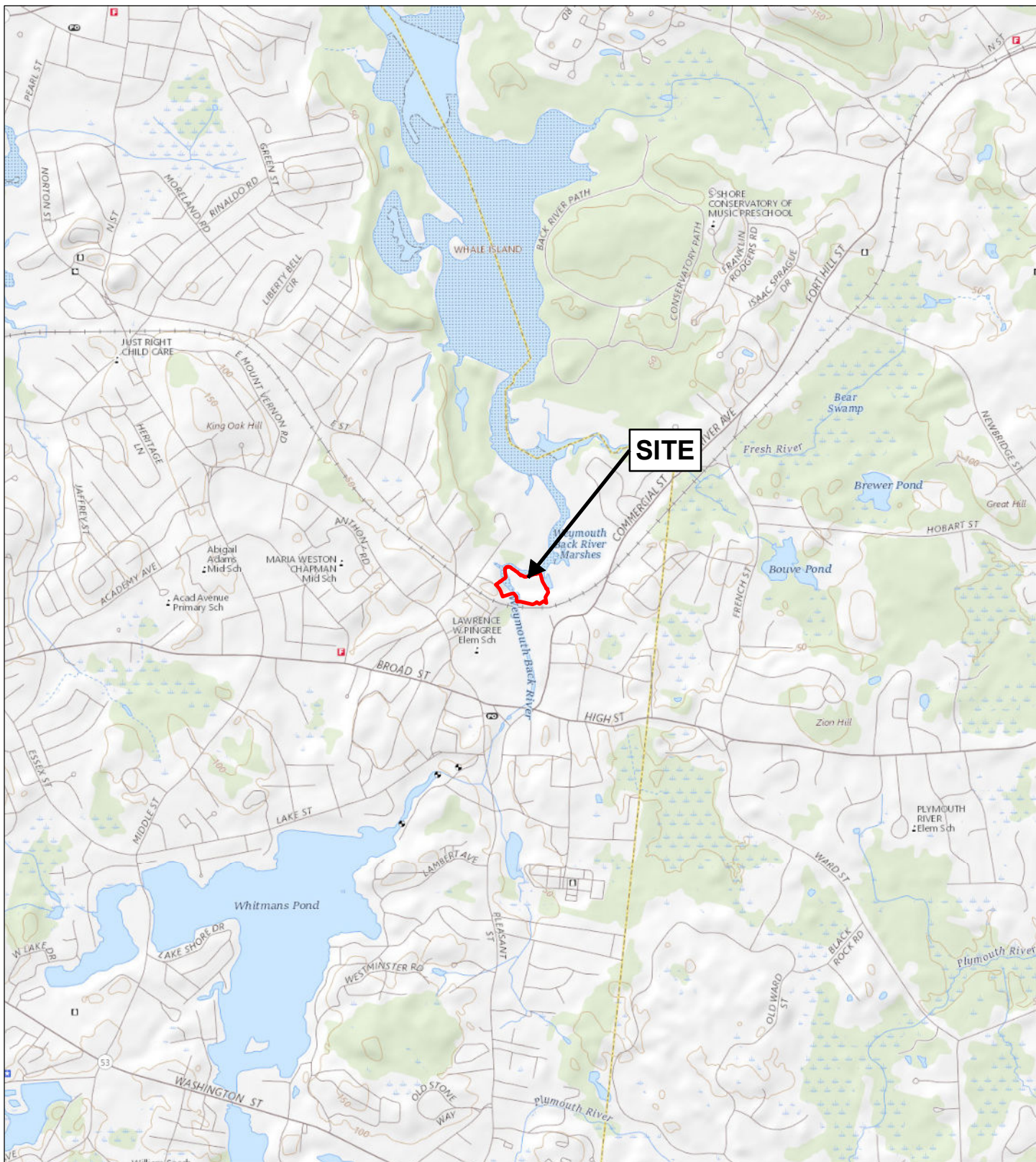
- The MBTA public website includes a page for the Project that provides information about the project and will be updated with information on Project timelines and other information as it becomes available. The link to the website page is here:
<https://www.mbta.com/projects/durante-remediation-and-wetland-enhancement>
- The website contains a number and email address which are directed to the outreach team at MBTA for follow up.
- A virtual informational meeting was hosted by MBTA on February 18, 2025.
 - The EJ Reference List received information related to this meeting via email.

- Notifications¹ of the virtual meeting were posted in the appropriate newspaper(s) with circulations to each municipality prior to the meeting date.
 - A recording of the meeting was posted on the project website.
- All cleanup and required MCP documents (Release Tracking Number [RTN] Number: 4-20447) are available at the following website:
<https://eeaonline.eea.state.ma.us/portal#!/search/wastesite>
- Hard copies of Project materials will be made available at municipal libraries and/or city halls or transfer stations.
- Under request, in person project informational meetings will be scheduled at a convenient location near the Project Site as the Project progresses.

Recipients of this form include organizations on the EJ Reference List provided by Massachusetts Executive Office of Energy and Environmental Affairs per the Public Involvement Protocol as well as Agency and Other Reviewers.

¹ According to the Census Bureau American Community Survey, Table B16001, 2011-2015 5-year estimates, there are no census tracts (during the data years) within one mile of the Project Site that exceed the 5 percent threshold required by the 301 CMR 11. Therefore, no translations of project documents will be provided.

**Attachment A:
Figures**



Approximate Site Boundary



0 2,000
Feet



Wannalancit Mills
650 Suffolk Street
Lowell, MA 01854
978-970-5600



Massachusetts
Map Location

SITE LOCATION MAP
FORMER DURANTE PROPERTY
WHARF STREET NORTH

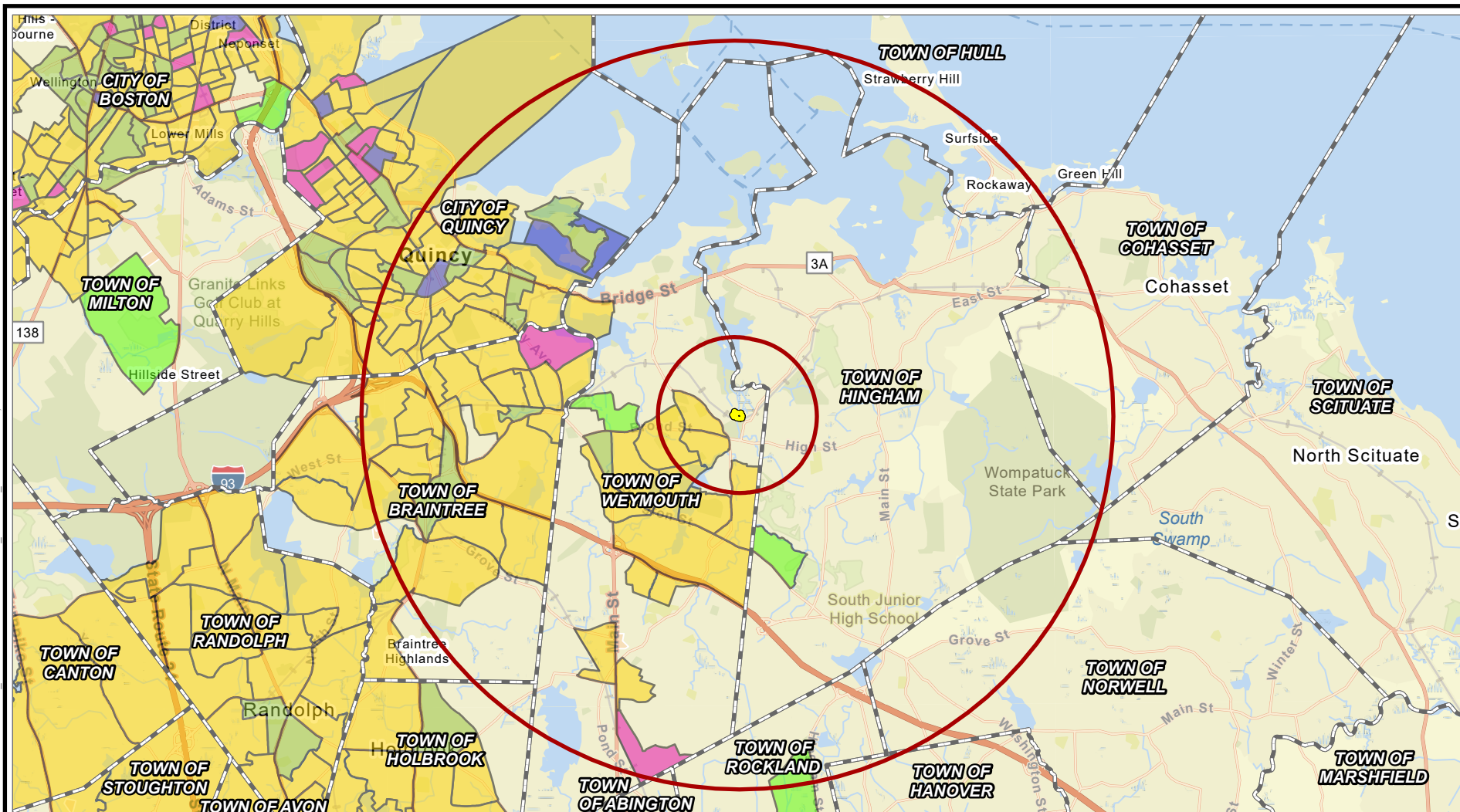
WEYMOUTH, MA

FIGURE 1

JAN 2024

Base Map: USGS/The National Map

COORDINATE SYSTEM: NAD 1983 2011 STATEPLANE MASSACHUSETTS MIND FPS 2001 FTUS; MAP ROTATION: 0
-- SAVED BY: GSTUDWELL ON 8/7/2024, 15:20:05 PM; FILE PATH: T1-PROJECTS\MBTA\459216 DURANTE\2-APR\FIGURES_20230417.APRX; LAYOUT NAME: EJ



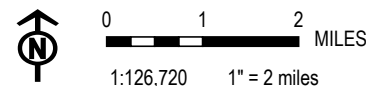
- DURANTE SITE
- ONE- AND FIVE-MILE RADII AROUND PROJECT AREA
- MUNICIPAL BOUNDARY

- ENVIRONMENTAL JUSTICE BLOCK GROUPS**
- MINORITY
 - INCOME
 - MINORITY AND INCOME
 - MINORITY AND ENGLISH ISOLATION
 - MINORITY, INCOME AND ENGLISH ISOLATION



PROJECT: DURANTE SITE REMEDIATION AND WETLAND RESTORATION PROJECT WEYMOUTH, MASSACHUSETTS	
TITLE: ENVIRONMENTAL JUSTICE AREAS	
DRAWN BY: G. STUDWELL	PROJ. NO.: 459216
CHECKED BY: I. MOHAMMADI-HALL	FIGURE 2
APPROVED BY: J. SHUSTER	
DATE: AUGUST 2024	

BASE MAP: MASSGIS ORTHO IMAGERY, 2023
DATA SOURCES: MASSGIS, TRC, ESRI



650 SUFFOLK STREET
SUITE 200
LOWELL, MA 01854
PHONE: 978.970.5600

FILE: DURANTE_FIGURES_20230417

Attachment B:
Project Vulnerable Health EJ Criteria (1-mile)

**Attachment B: Durante Site Remediation and Wetland Restoration Project
Vulnerable Health EJ Criteria (1-mile)**

Municipality	EJ and Vulnerable Health EJ Criteria Status	Vulnerable Health Topic EJ Criteria Met	Statewide Rate
Hingham	Meets at least one Vulnerable Health EJ Criteria	Pediatric Asthma Ed Visits Rate per 10,000	65.9
		Heart Attack Rate per 10,000	26.1
Weymouth	Meets at least one Vulnerable Health EJ Criteria	Pediatric Asthma Ed Visits Rate per 10,000	65.9
		Lead Poisoning Rate per 1,000	13.6
		Low Birth Weight Rate per 1,000	216.8

Attachment C:
Massachusetts Department of Health EJ
Communities within 1-mile of Project Site

Attachment C: Durante Site Remediation and Wetland Restoration Project
Massachusetts Department of Public Health (DPH) Environmental Justice (EJ) Communities (1-mile)

Municipality	Geographic Area Name	EJ Criteria Description	Minority Population (%)	Median Income	Percent of MA Median Income (%)
Weymouth	Block Group 1, Census Tract 4225.02, Norfolk County	Minority	34.38	\$64,112	75.98
Weymouth	Block Group 2, Census Tract 4225.01, Norfolk County	Minority	33.33	\$57,368	67.98
Weymouth	Block Group 3, Census Tract 4225.02, Norfolk County	Minority	28.15	\$77,247	91.54
Weymouth	Block Group 4, Census Tract 4225.02, Norfolk County	Minority	34.41	\$60,917	72.19
Weymouth	Block Group 2, Census Tract 4225.02, Norfolk County	Minority	27.12	\$79,236	93.90