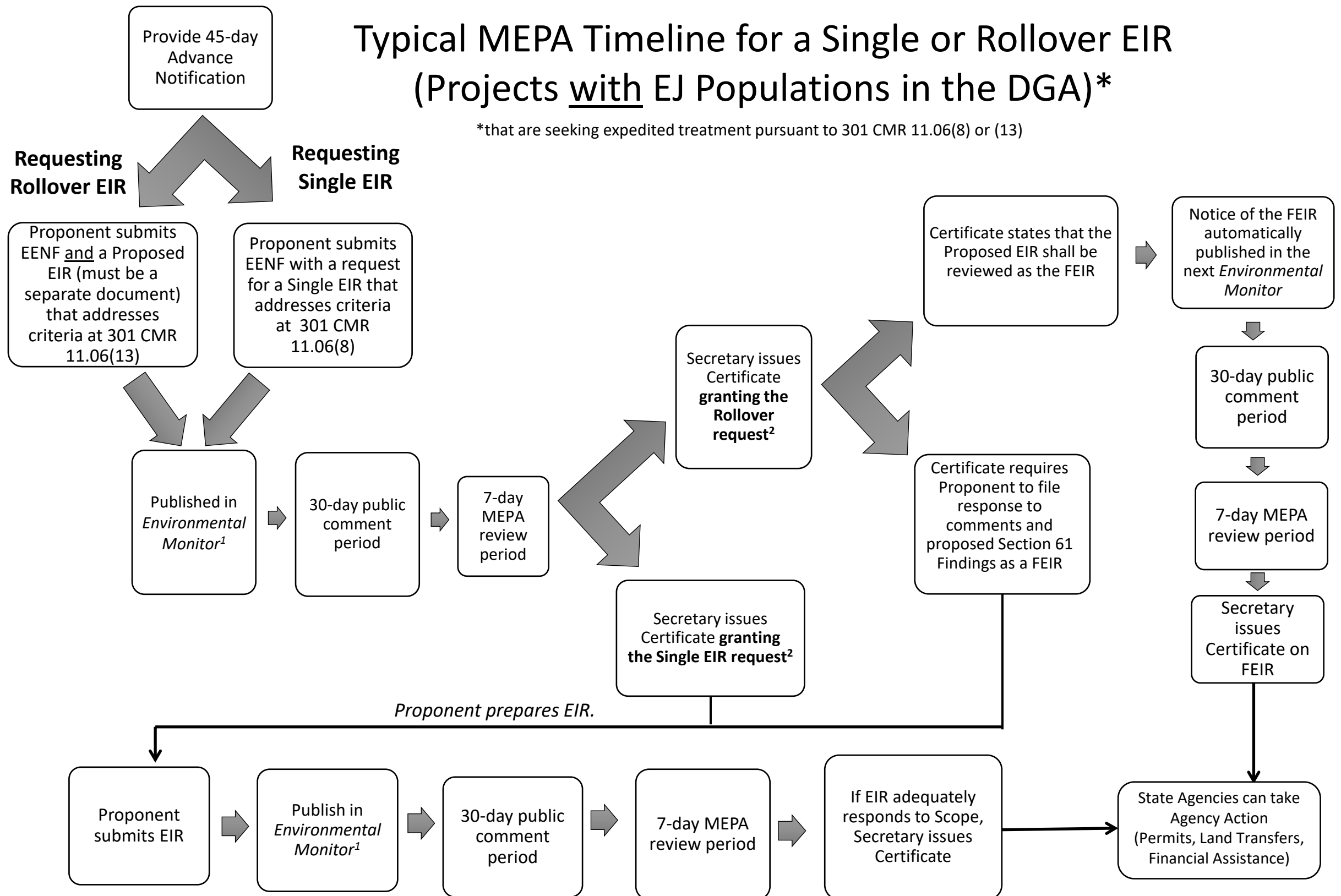


# Typical MEPA Timeline for a Single or Rollover EIR (Projects with EJ Populations in the DGA)\*

\*that are seeking expedited treatment pursuant to 301 CMR 11.06(8) or (13)



<sup>1</sup> The *Environmental Monitor* is published twice a month and is available [here](#). The website also contains the publication schedule for the *Environmental Monitor*, which identifies submission deadlines, comment due dates and decision deadlines.

<sup>2</sup> If the Single EIR and/or rollover request is denied, the Secretary may require the filing of a Draft and Final EIR. Refer to “Typical MEPA Timeline” chart for guidance. If the rollover request is denied, the Secretary may allow the filing of a Single EIR if this was requested on the ENF form and if the filing meets the criteria at 301 CMR 11.06(8).

# Typical MEPA Timeline (Projects without EJ Populations in the DGA)\*

