

MCRT Wayside Branch MEPA Site Walk

December 16, 2013

MEPA Process

The purpose of MEPA is to provide meaningful opportunities for public review of potential environmental impacts of Projects for which Agency Action is required, and to assist each Agency in using all feasible means to avoid Damage to the Environment or, to the extent Damage to the Environment cannot be avoided, to minimize and mitigate Damage to the Environment to the greatest extent practicable

Wayside Branch Berlin to Waltham



Mass Central Rail Trail - Waltham to Berlin Section

Legend

- MA Towns, Solid Outline
- Major Roads**
- Road Classification**
- Limited Access Highway
- Multi-lane Hwy, not limited access
- Other Numbered Highway
- Bay Circuit Trail
- Bruce Freeman RT
- Assabet River RT
- MCRT - MBTA Corridor



For planning purposes only
Data from MassGIS, DCR, EOT Val Maps,

MCRT Wayside Branch Overview

- 23 mile long bikeway in 8 communities

- Berlin - 2.3 miles
- Bolton – 100 feet
- Hudson - 6.9 miles
- Stow - 327 feet
- Sudbury – 4.6 miles
- Wayland – 3.0 miles
- Weston – 3.0 miles
- Waltham – 3.0 miles

MCRT Wayside Branch Overview

- Former Massachusetts Central Railroad ROW 50 to 100 feet wide
- Currently owned by the MBTA
- DCR secured long term lease to construct, manage and maintain a rail trail within a 19 foot delineated “Path Development Corridor”

Environmental and Historic

- Rail Trail passes through 3 priority and estimated habitat
- Over 13 major navigable waterways
- No significant impact to historic resources
- No impact to ORW or Wild and Scenic Rivers

Permitting

Required Permits and Approvals for the MCRT-WB

- Order of Conditions in each municipality (eight)
- Chapter 91 Waterways License
- USACE Section 404 permit (anticipate compliance with the Massachusetts Programmatic General Permit)
- NPDES Construction General Permit

Development Strategies

- Funding for final design and construction not secured
 - DCR Capital Program
 - Communities
 - Private donations
 - Other state agencies

MCRT Wayside Branch Design Considerations

- Off – road multi-use path will be
 - Designed horizontal and vertical sight lines
 - ADA compliant Surface treatments (firm and stable)
 - Trail heads at entrance points and intersecting roadways
 - Use of surrounding parking lots for path users
 - Drainage and stormwater will be an open system
 - Rest areas, with overlooks, benches, and accessible space

Existing Features



Berlin



495 Underpasses



2 underpasses





Hudson



Assabet River bridge, Hudson



9 bent, timber pile trestle, 1931
Recommended Not NR eligible



Tower St, missing bridge, Hudson



Licenses and Encroachments



MCRT - MBTA Lease Area - Corridor Encroachments



0 0.0125 0.025 0.05 0.075 0.1 Miles

For planning purposes only.
Data from MassGIS, DCR, EOT Val Maps,

At-grade Crossings

- 42 At grade crossings. Includes:
 - 2 diveways (farm crossings)
 - 3 industrial crossings, 2 not shown on Val Maps



Sudbury



#128, Hop Brook, Sudbury, SUD_900



Facing N

1881, Plate Girder bridge
Recommended NR eligible

Wayland



Great Meadows WL Refuge, Bridge



118' Timber Pile Trestle at
Wildlife Refuge
Recommended NOT NR
Eligible



At-grade Crossings

Central St, Hudson



Old Sudbury and Concord Rd, Wayland

Weston



Church St, Weston, Underpass WSN_945



Concrete underpass
Recommended NR Eligible by VHB

Bridge over active rail, WSN_904



1896 Thru Lattice Truss
Recommended NR Eligible



Waltham



Waltham, 128 Bridge, WLT_918



1960 2 span Thru Plate Girder
Recommended NOT NR eligible

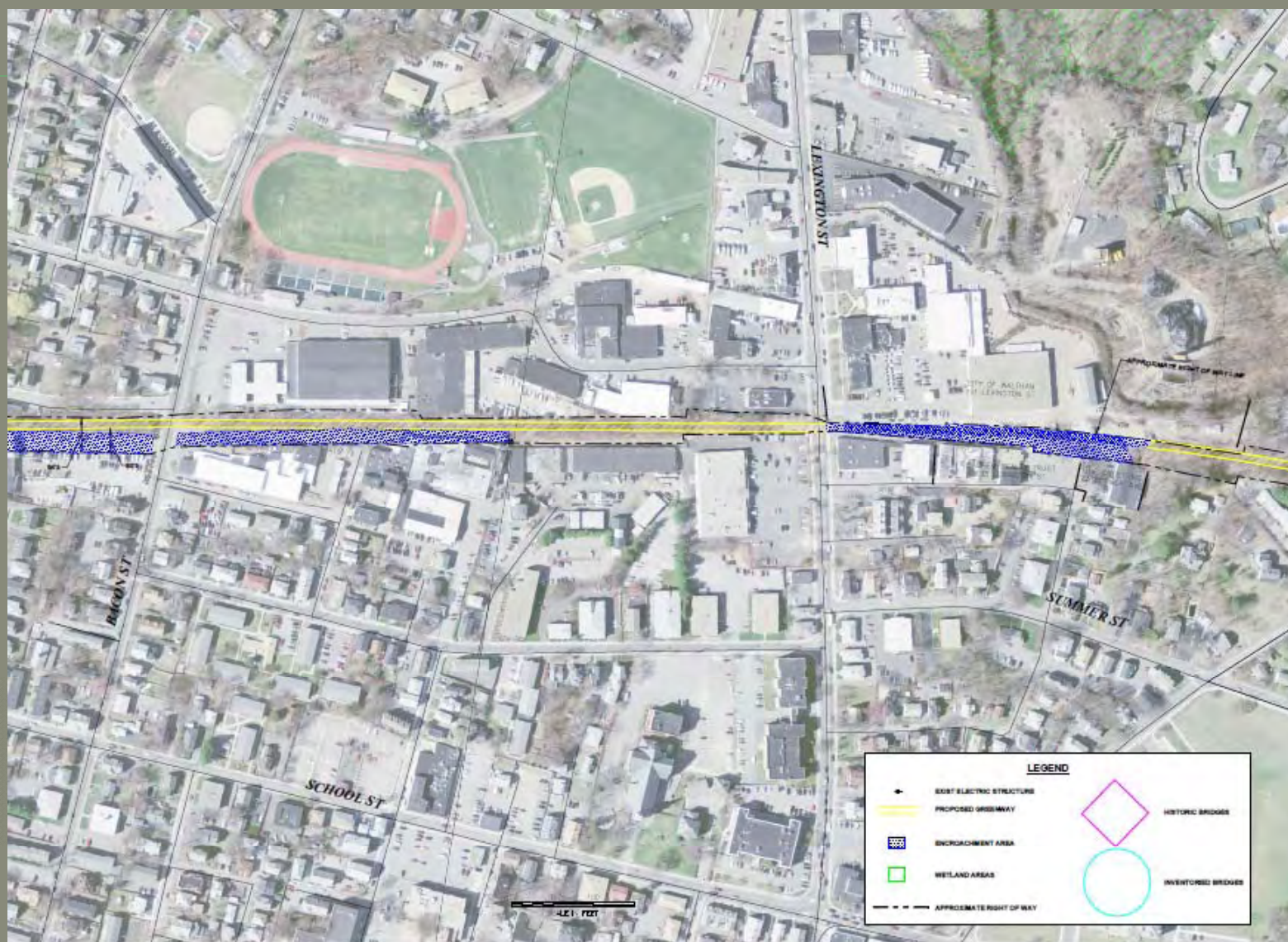
Waltham, Linden St, WLT_901



1894, Riveted Lattice Thru Truss

Listed on the State Register of Historic Places, Recommended NR eligible

Corridor



Infrastructure

● Bridges

- 10 Extant Bridges
 - 5 timber pile, 3 plate girder, 1 thru lattice truss, 1 riveted lattice truss
 - 5 recommended National Register Eligible
- 4 Missing Bridges

● 4 Extant Underpasses

- 4 filled underpasses
- 1 recommended NR Eligible

● Culverts

- As many as 69 culverts and cattle passes shown on Val maps
- 1 recommended NR Eligible

Culverts



As many as 59
Culverts shown
on Val maps
As many as 10
Cattle Passes
1 Recommended
NR Eligible
(photo left)

